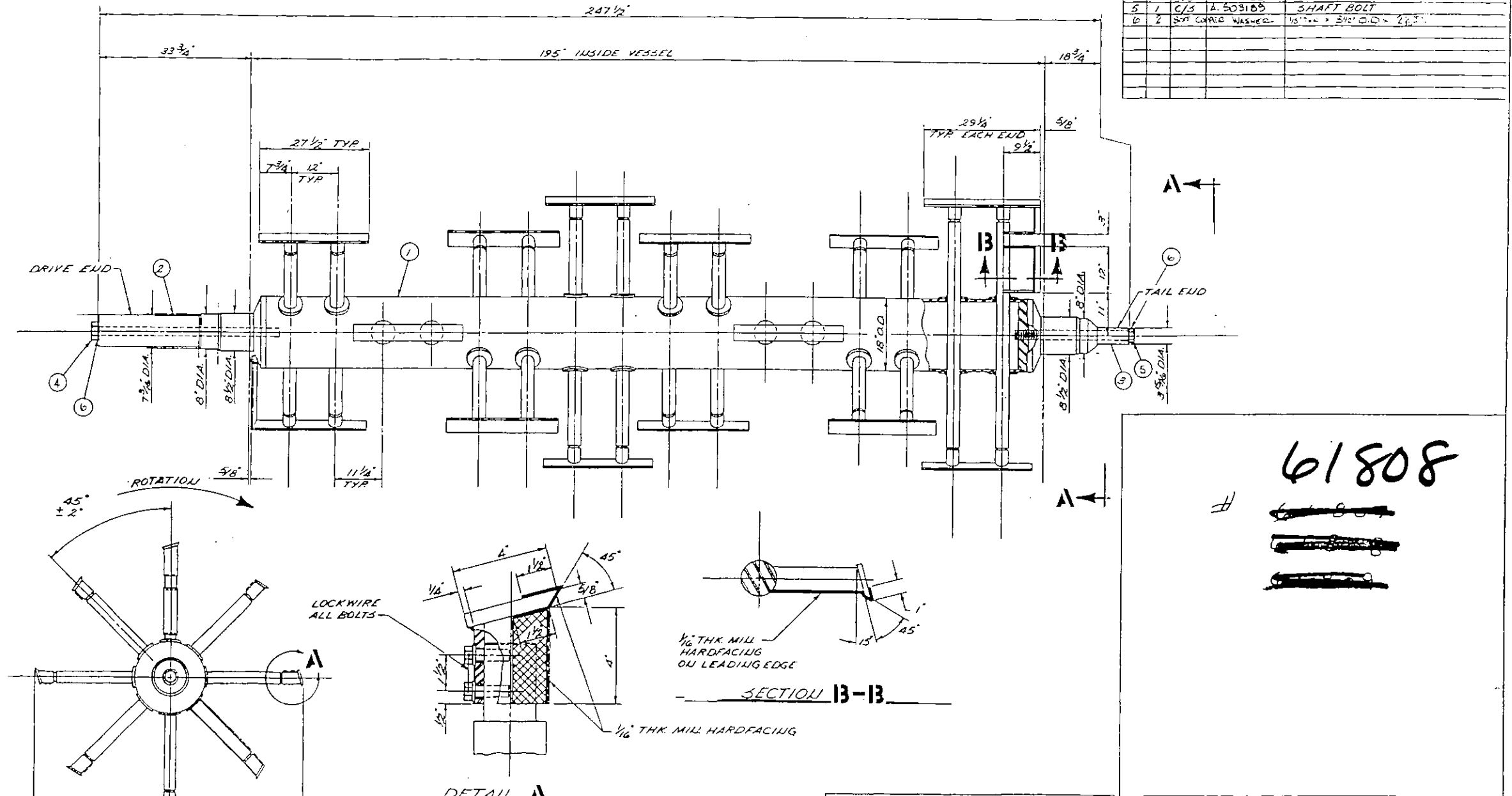


ITEM	QTY	MAT'L	PART NO.	DESCRIPTION
1	1	C/S	D502981	ROTOR ASSEMBLY
2	1	C/S	C502982	DRIVE SHAFT
3	1	C/S	C502983	TAIL SHAFT
4	1	C/S	A 503188	SHAFT BOLT
5	1	C/S	A 503189	SHAFT BOLT
6	2	SPR COILED WASHERS	1/2" DIA. x 3/4" O.D. x 2 1/2"	



61808

#

~~61808~~

~~61808~~

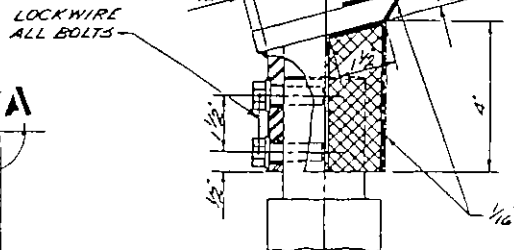
~~61808~~

REV.	DATE	EN. NO.	DESCRIPTION	DR.	CHK.
A	9/4/56		REVISED PER APPROVAL DATED 7/26/56		

THIS DRAWING IS THE PROPERTY OF BEPEX CORPORATION AND IS TRANSMITTED IN CONFIDENCE. THE REPRODUCTION, USE, OR DISCLOSURE, IN WHOLE OR IN PART, OF THE DESIGN CONTAINED HEREIN IS PROHIBITED BY PENALTY OF THE WRITING CONSISTENT WITH BEPEX CORPORATION.

TOLERANCES UNLESS OTHERWISE SPECIFIED	ISO 129 METHOD A	TITLE
FRACTIONS 1/2	10	ROTOR ASSEMBLY WITH SHAFTS
DECIMALS .001	10	DRAW. NO. 1K/11/11M-DR-102
ANGLES 1/2	10	SCALE 1/4" = 1"
WELDS 1/16	10	CHK'D BY
WELDING	10	DR. 1/20/56
USED ON	10	NEXT ASY
PART NO.	SYM. TO	ORIG. JOB NO.

A. Project: Carver Greenfield
 Sludge Penetration & EPS
 Contract No. 1
 L.A. County Sanitary Dist. #2
 Foster Wheeler
 Brinderman Corporation
 Bepe Corporation
 Sub Contractor No.: 86000311
 CRU-400 Continuator
 To Future: Moorhead Boiler & Mach. Co.
 191-12, Bld-136, 1st-20C
 11K
 Between: Canning
 311 & 87 & 6
 At Elev. 16'0"

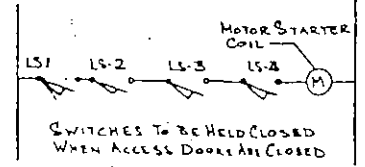
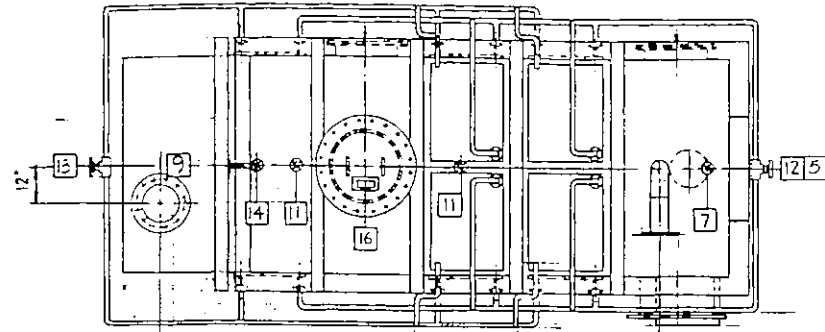


SECTION 13-13
 1/8" THK MILL HARDFACING ON LEADING EDGE
 1/8" THK MILL HARDFACING

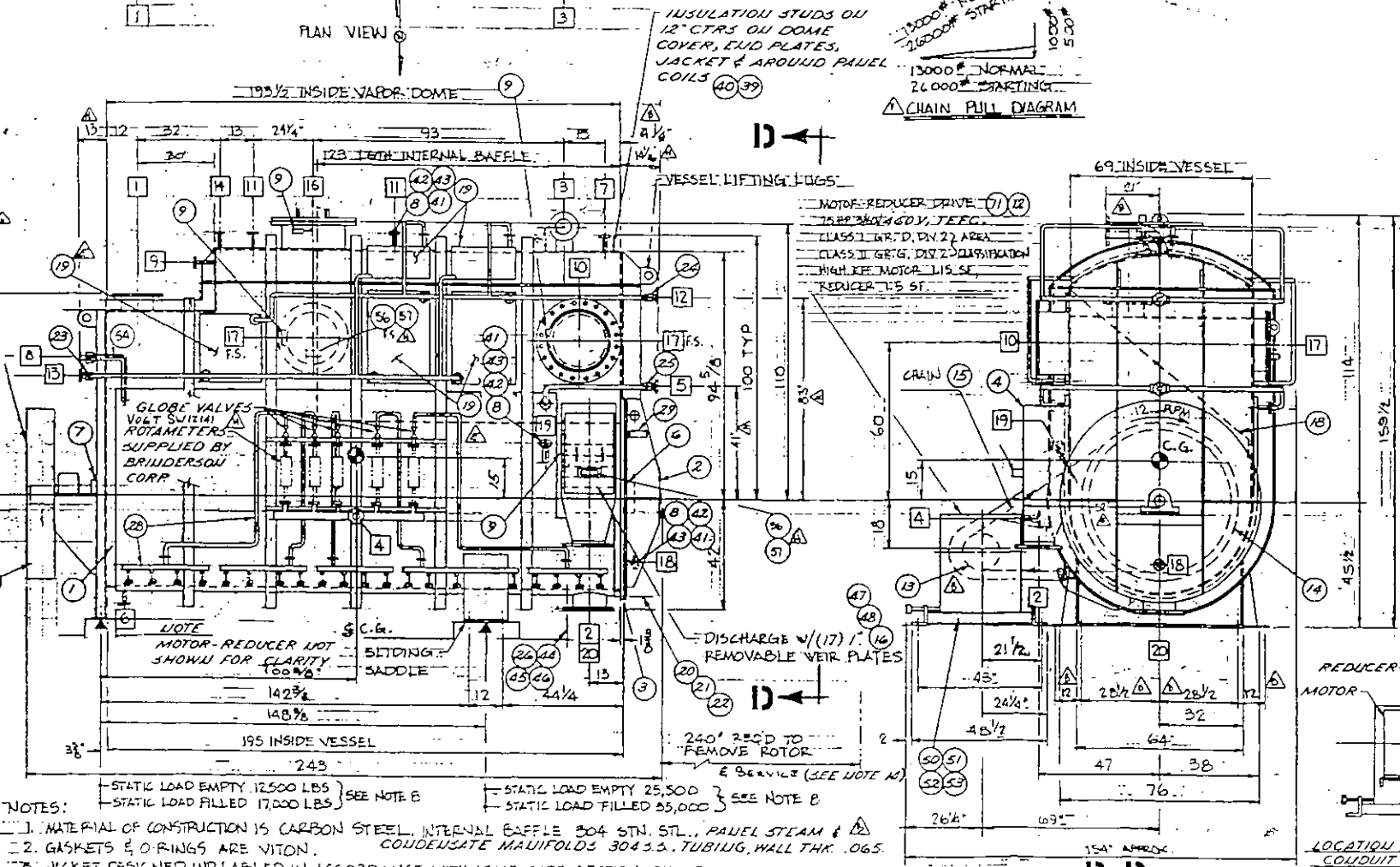
VIEW A-A

SHOP TEST PROCEDURES

- VACUUM TEST VESSEL AT 1PSIA, MAX DECAY 0.3 PSI/HR FOR 24 HOUR.
- HYDRO TEST VESSEL AT 22 1/2 PSIG
- HYDRO TEST VESSEL JACKET AT 285 PSIG
- MANUALLY TURN MOTOR A MIN. OF 10 COMPLETE REVOLUTIONS TO CHECK FOR INTERFERENCE
- INSTALL & REMOVE WEIR PLATES TO INSURE FIT.



ACCESS COVER LIMIT SWITCH WIRING DIAGRAM

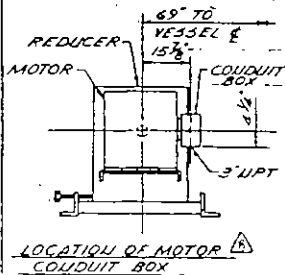


A	Project:	Carver Greenfield Shore Refining & P&S
B	Owner:	L.A. County Sanitary Dist. #2
C	Engineer:	Forster Transfer
D	Contractor:	Brinderson Corporation
E	Sub Contractor:	Bepex Corporation
F	Sub Contractor No.:	34000311
G	Supplier's Purchase Agreement No.:	CR 03-600 Continuator
H	Manufacturer's Name:	To Follow
I	Contract Drawing Reference:	Manufacture Boiler & Mach. Co.
J	Applicable Specifications:	179-12, 14-134, 14-700
K	Description of location within the facility being constructed, where installation is intended:	Between Column #11 & #14 @ 5th Fl. E. 84'-0"

61808
~~61807~~
~~_____~~
~~_____~~

DR 102

BRINDERSON P.O. 0225-6212
ITEM NO: 1K-DR-102, 1L-DR-102 & 1M-DR-102



LOCATION OF MOTOR IN COUDDIT BOX

NOTES:

- MATERIAL OF CONSTRUCTION IS CARBON STEEL, INTERNAL BAFFLE 304 STN. STL., PANEL STEAM & CONDENSATE MANIFOLDS 304 3/8\"/>
- GASKETS & O-RINGS ARE VITON.
- JACKET DESIGNED AND LABELED IN ACCORDANCE WITH ASME CODE SECTION VIII CURRENT ISSUE. DESIGN PRESSURE 190 PSIG AT 385°F. HYDROSTATIC TEST AT 285 PSIG AND VACUUM TEST AT 1PSIA, MAX DECAY 0.3 PSI/HR. FOR 24 HRS.
- VESSEL DESIGN PRESSURE 15 PSIG @ 385°F. HYDROSTATIC TEST AT 22 1/2 PSIG, ASME LABELED AND VACUUM TEST AT 1PSIA, MAX DECAY 0.3 PSI/HR. FOR 24 HRS.
- VESSEL TROUGH SHELL TO INCLUDE 1/8\"/>
- ROTOR PADDLES LEADING EDGES ARE HARDFALED. (1/8\"/>
- UNIT WEIGHTS: ROTOR 5500#, UNIT TOTAL LESS DRIVE 38000#. DRIVE WT. 4000# (REDUCER, MOTOR, BASE), CHAIN & SPROCKETS 1726#. OPERATING WEIGHT WITH 400 FT³ MATERIAL = 58000# (APPROX TOTAL INCLUDING DRIVE).
- THESE LOADS DO NOT INCLUDE DYNAMIC LOAD RESULTING FROM CHAIN PULL.
- INSULATION CLIPS ARE PROVIDED ON APPROX 12\"/>
- PANEL COILS SHALL COVER 25% OF THE VAPOR DOME
- HEAT TREATMENT AREA JACKET 2 1/4\"/>
- TWO SETS OF ROTOR DOLLIES SHALL BE FURNISHED BY BEPEX.
- PANEL COILS SHALL COVER 25% OF THE VAPOR DOME
- ALL FLG. DRAWING TO SPINDLE UNLESS UNLESS OTHERWISE SPECIFIED
- NOTE: NOT TO EXCEED 25 PSI @ 3 FT.

REV.	DATE	ECN NO.	DESCRIPTION	BY	CHK
H	11-11-86		ADD VOLT VALVE - ADD G TO PSI	PL	PL
H	11-11-86		VESSEL DESIGN TEMP WAS 350°F	PL	PL
E	9-3-86		REVISED QUANTITY OF PANEL COILS	PL	PL
D	8-18-86		ADDED BILL OF MATERIAL	PL	PL
C	7-14-86		SEE SHEET B	PL	PL
B	6-10-86		MOTOR WAS OPPOSITE SIDE SHOWN, ADD SW 1-3	BD	PL
A	7-15-86		REDCRAWN ADDED SHT 2	BD	PL

10% TOLERANCE UNLESS OTHERWISE SPECIFIED		150 TYP UNLESS NOTED	TITLE 1M-DR-102, 1L-DR-102 & 1K-DR-102	
FRACTIONS 1/8		W/THOD A	CRUJ 400 CONTINUATOR	
DECIMALS .XXX	MACH 1/16 UNLESS NOTED	APP	2ND STAGE #HYDROEXTRACTOR	
ANGLES 30°	DR 12 1/2	CHK	SCALE 1 1/2\"/>	DRAWING NO
HOLE	DR 12 1/2	DR 12 1/2	D502367	
USE FOR PART NO.	SIM TO	NEXT ASSY	SHEET 1 OF 4	