

NO.	SIZE	RATING	FACING	NECK	REIN. PAD SIZE	COMMENTS
A	14"	150#	RFSO	STD. WT.		GAS OUTLET
B	3"	150#	RFSO	X-STG		INSTRUMENT ΔP
C						
D	22"	150#	RFSO	STD. WT.	1/4" THK X 2" WIDE	MANHOLE W/ DAVIT
E	3"	150#	RFSO	X-STG		INSTRUMENT ΔP
F	14"	150#	RFSO	STD. WT.	1/4" THK X 1" WIDE	GAS INLET
G	8"	150#	RFSO	X-STG		LIQUID OUTLET
H	8"	150#	RFSO	X-STG		REFLUX INLET
L	12"	150#	RFSO	STD. WT.		INSPECTION PORT

NAT'L. BD. DuPONT P.O. No. LAB-87212-D
DuPONT E.N. NO. 1055-9999-49
DuPONT E.N. NO. 1055-9999-49-06
PLANT: BELLE
DuPONT PROJECT No.: 8998

3107

CERTIFIED BY
SISTERSVILLE TANK WORKS, INC
SISTERSVILLE, W.V.

SHELL SIDE JACKET SIDE
FV & 30 PSIG AT 375 °F PSI AT °F
MAX ALLOWABLE WORKING PRESSURE MAX ALLOWABLE WORKING PRESSURE
-20 °F AT 30 PSIG °F AT PSI
MIN. DESIGN METAL TEMP. MIN. DESIGN METAL TEMP.

SER. NO. 91-134 YEAR BUILT 1991

MATERIALS OF CONSTRUCTION		
	VESSEL OR SHELL SIDE	JACKET OR TUBE SIDE
SHELL	SA516-70	
HEADS	SA516-70	
FLANGES	SA105	
NOZZLE NECKS	SA106-B	
VESSEL SUPPORTS	SA516-70	
EXT. BOLTS & NUTS	SA193-B7 / SA194-2H	
INT. BOLTS & NUTS		
GASKETS	1/16" GRAFOIL GHR	
BODY FLANGES	SA516-70	

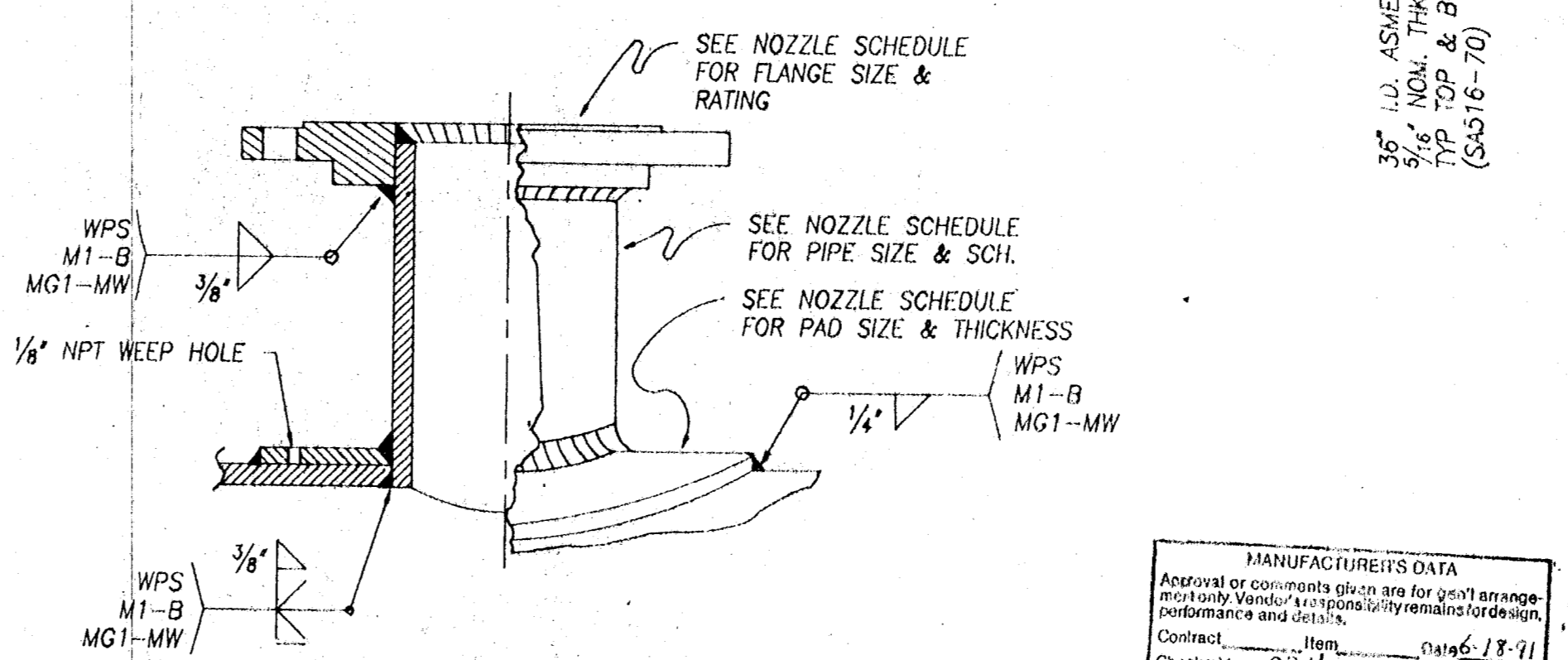
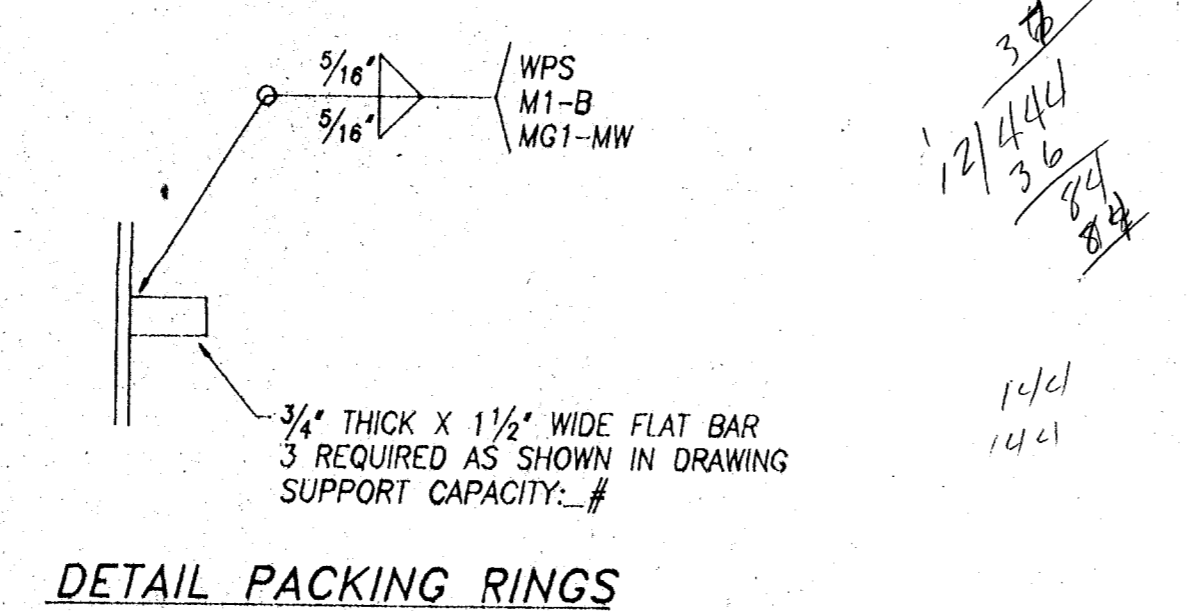
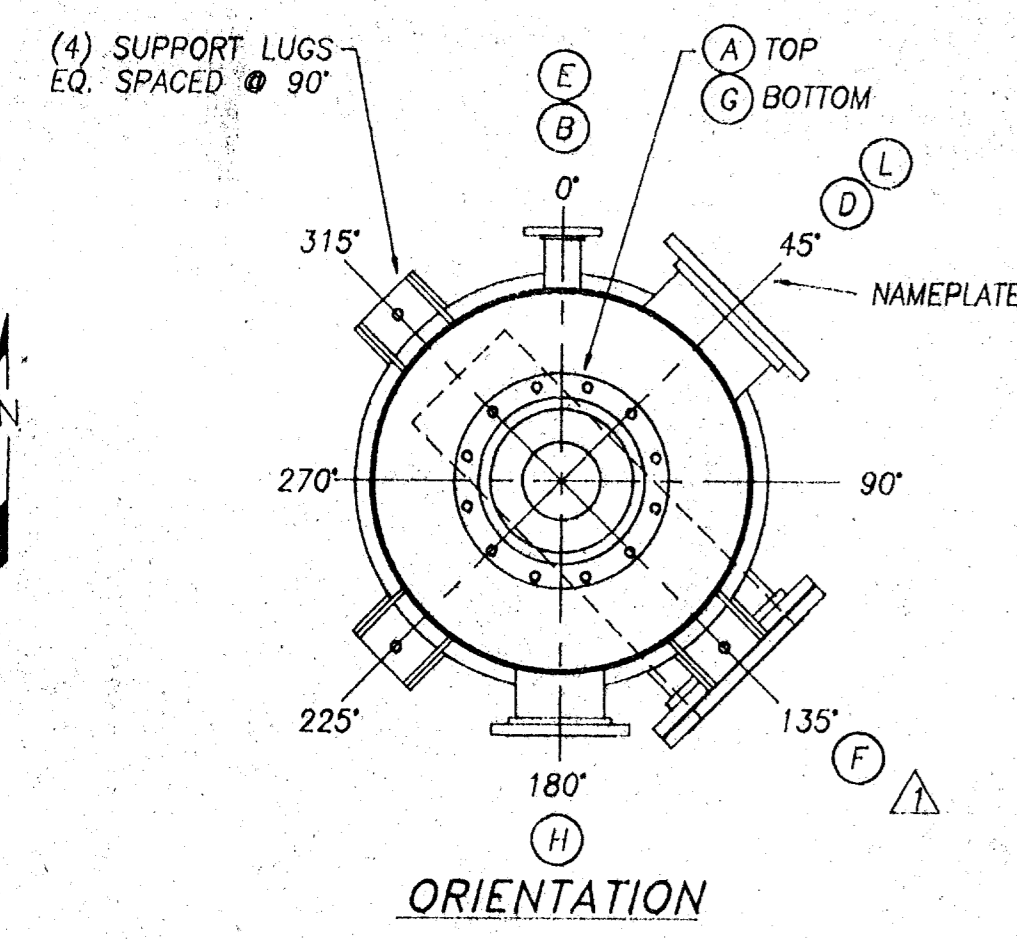
DESIGN PRESS.	30 PSIG FULL VAC	PSIG VAC.
DESIGN TEMP.	375 °F -20 MIN. °F	°F MIN. °F
OPERATING PRESS.	PSIG VAC	PSIG VAC
OPERATING TEMP.	°F °C	°F °C
CORR. ALLOW.	.125"	
CODE	1989 ASME SECT VIII DIV 1 ADD A89	
CODE STAMP	REQUIRED	
NAT'L. BD. REG.	REQUIRED	
STRESS RELIEF	NOT REQUIRED	
RADIOGRAPH	SPOT	
JOINT EFF.	85%	
HYDRO TEST	70 PSIG HORIZ. @ TOP	
SPECIAL SERVICE		

OPERATING CAP.	GAL	CU. FT.
FULL CAPACITY	1884 GAL	252 CU. FT.
EMPTY WEIGHT	7,000 LBS. FULL H ₂ O	22,8000 LBS.
OPERATING WT.	LBS. FULL PROD.	LBS.

SURFACE PREPARATION
BRUSH BLAST PER SSPC-SP7
PAINTING
SEE NOTE 5

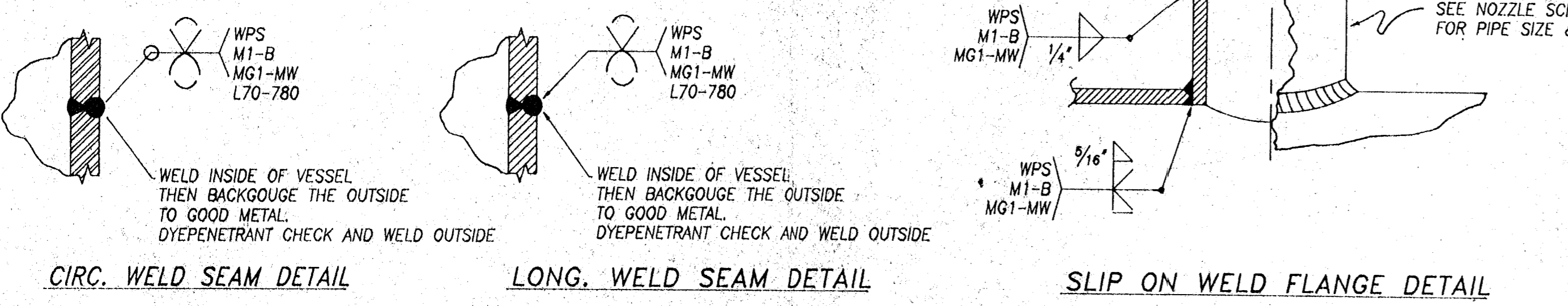
SISTERSVILLE TANK WORKS, INC.
ENGINEERING DEPARTMENT
1942 Mccoy STREET
SISTERSVILLE, W.V. 26175

CUSTOMER	PURCHASE ORDER NO.	DATE OF P.O.
E.I. DuPONT	LAB-87212D	1-30-91
DRAWN BY	DATE DRAWN	
J.L.G.	02-04-91	
SHEET 1 OF 2	DWG. NO.: 91-134	REV 3



- NOTES:** SLIP ON WELD FLANGE DETAIL
- ALL NOZZLE BOLT HOLES TO STRADDLE NATURAL CENTERLINES OF THE VESSEL.
 - GRIND AND RADIUS ALL SHARP CORNERS PER ASME CODE.
 - ALL COLUMN INTERNALS TO BE SUPPLIED BY OTHERS.
 - STAMP THE FOLLOWING INFORMATION ON THE NAMEPLATE:
DuPONT P.O. No. LAB-87212-D
DuPONT E.N. NO. 1055-9999-49
PLANT: BELLE
DuPONT PROJECT No.: 8998
 - PAINT:
FIRST COAT: 2 MILS DFT DUPONT 67Y834 DULUX CHROMATE-FREE PRIMER
INTERMEDIATE COAT: 2 MILS DFT DUPONT 96 SERIES DULUX ENAMEL 96Y67633 SHALE GRAY
TOP COAT: 2 MILS DFT DUPONT DULUX 96 SERIES DULUX ENAMEL 96Y67637 CIRRUS GRAY
TOTAL MILS DFT TO BE 6 MILS MINIMUM
 - MACHINED SURFACES EXPOSED TO ATMOSPHERE SHALL BE COATED WITH AN EASILY REMOVABLE RUST PREVENTATIVE AND PROTECTED FROM DAMAGE DURING SHIPMENT. FLANGE FACES TO BE PROTECTED W/ PLYWOOD COVERS & NEOPRENE GASKETS, BOLTED IN PLACE W/ STANDARD 1/4" BLACK BOLTS. TAPE AROUND FLANGE AND PLYWOOD COVER TO SEAL.
 - DESIGN FOR 75 MPH WIND LOADING.

CERTIFIED
SISTERSVILLE TANK WORKS
DATE: JUN 17 1991
REVISED JUN 17 1991
DATE: by both



REVISIONS			REVISIONS			REVISIONS			REVISIONS		
NO.	DATE	DESCRIPTION	BY	NO.	DATE	DESCRIPTION	BY	NO.	DATE	DESCRIPTION	BY
0	03-18-91	REVISED PER CUST MARKED PRINT 03-08-91	J.L.G.	3	06-12-91	REVISED REINFORCING PAD TO CLEAR V-RING	J.L.G.				
1	04-22-91	REVISED PER CUST FAX 04-18-91	J.L.G.								
2	05-02-91	REVISED PER CUST FAX 05-01-91	J.L.G.								

61105