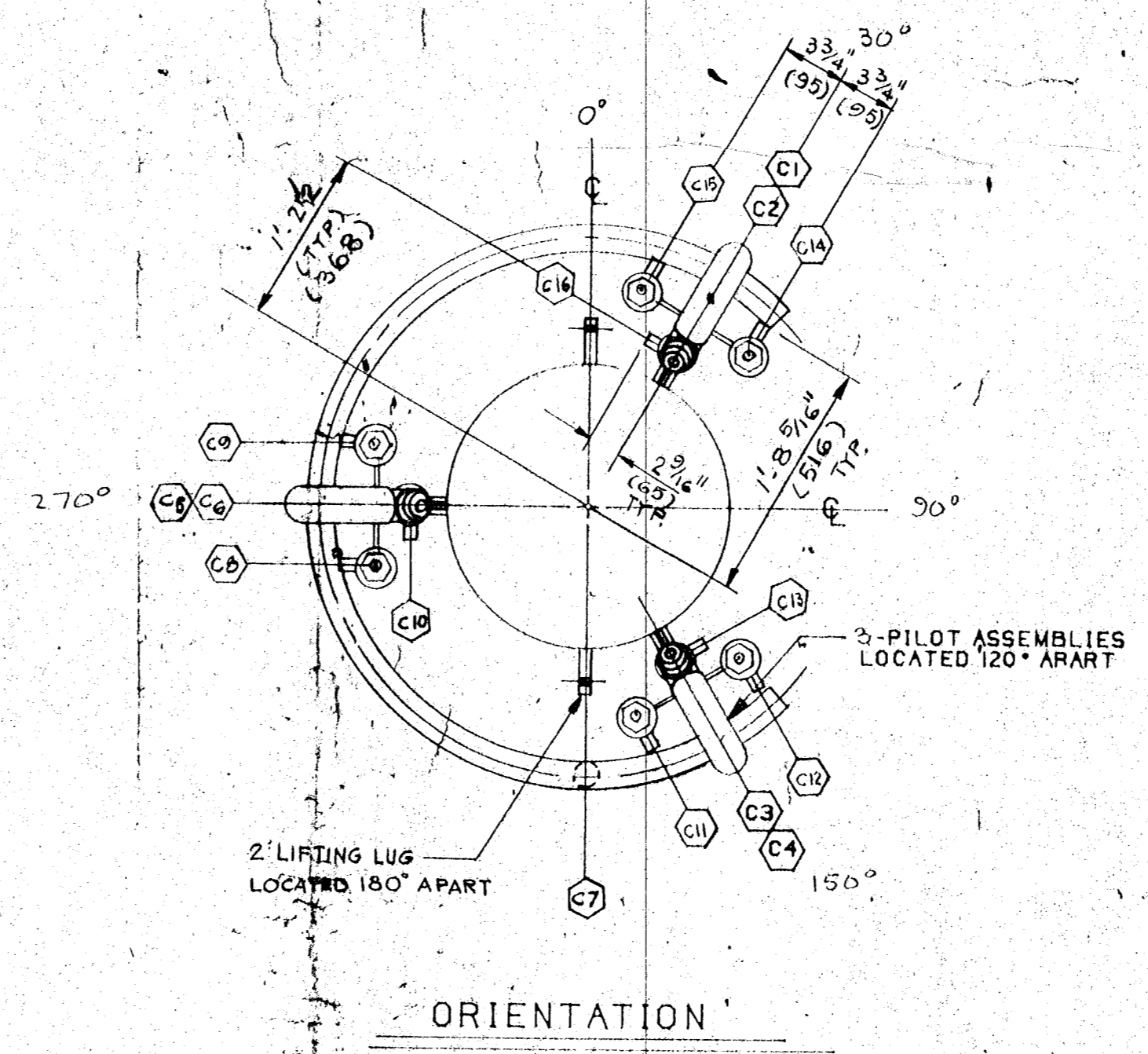


ELEVATION  
MK: B-701-1



ORIENTATION

PARTS LIST PER FLARE		
MK NO.	QUAN.	DESCRIPTION
B-701-1	1	20° FLARE TIP WITH FLAME RETAINER
B-ST-0991-1	1	WINDSHIELD
B-703-1	3	PILOT ASSEMBLIES LESS MIXERS (CEEP-210)
A-ST-1013-1	3	PILOT MIXER ASSEMBLIES (DUCTILE) WITH ORIFICE (CARBON STEEL) AND STRAINER (DUCTILE)
B-702-1	1	PILOT GAS MANIFOLD ASS'Y (A-120)
B-702-2	3	3/4" 3000# UNION (A-105)
B-703-2	9	THERMOCOUPLE ASSEMBLIES (6-4" LG) CHROMEL ALUMEL 310 S.S. SHEATH UNGROUNDED

NOZZLE LEGEND		
CONNECTION	QUAN.	DESCRIPTION
(NI)	1	20°-300° R.F.S.D FLANGE (A105)
(CARBON STEEL)		
(C1) (C3) (C5)	1 EA	3/4" PILOT GAS CONNECTION (MALE N.P.T.)
(C2) (C4) (C6)	1 EA	1" PILOT IGNITION CONNECTION TO FLAME FRONT GENERATOR (MALE N.P.T.)
(C7)	1	1" PILOT GAS MANIFOLD CONNECTION (MALE N.P.T.)
(C8) (C9) (C10) (C11)	1 EA	3/4" PILOT THERMOCOUPLE CONNECTION (FEMALE N.P.T.)
(C12) (C13) (C14) (C15) (C16)		

GENERAL NOTES:

- DIMENSIONS ARE IN FEET AND INCHES. (MILLIMETERS)
- PILOT MIXER ORIFICE DRILLED FOR NATURAL GAS (100 SCFH AT 15 PSIG)
- MK NO'S. PREFIXED WITH S.O. NO. X 53305
- FLANGE BOLT HOLES TO STRADDLE CENTER LINE INDICATED BY C
- APPROX. WT.: 2400#
- FOR PROPER OPERATION ANY LOW POINT IN THE IGNITION PIPING FROM THE FLAME FRONT GENERATOR TO THE PILOTS SHOULD HAVE PROVISIONS FOR DRAINING.
- RECOMMEND ADDITIONAL STRAINER IN THE PILOT GAS SUPPLY PIPING BE INSTALLED AT GRADE.
- ALL WELDING PER AWS, D1.1
- SHOP COAT WITH HIGH HEAT ALUMINUM (CARBON STEEL ONLY.)
- STACK LINED WITH HIGH TEMPERATURE REFRACTORY, TYPE CE-141A.

FABRICATED IN REPLY  
FOR GENERAL CONTRACTOR  
TO BRUNNEN & HANSEN  
ST-4032

APPROVED  
APPROVED AS  
NOTED

NOT APPROVED  
BY E.E. COY FOR THIS ORDER  
E.E. COY 4/23/81  
US 200 2555 3-100

*H. C. Bue* 4/23/81

PROJECT: 6438  
PLANT: VICTORIA  
AVC - 1382-W  
DA-4032

S/O  
X53305  
X53305  
X53305

NOV 23 1981  
MASTER FILE COPY  
STARTUP FLARE TIP SHEET # 1  
DPF 266006

NOTE  
DEVICES SHOWN BY THIS DRAWING ARE COVERED BY UNITED STATES AND FOREIGN PATENTS GRANTED AND PENDING

# 60822, 60823, 60824

REVISION				JOB INFORMATION				DRAWING INFORMATION			
NO.	DESCRIPTION	BY	DATE	NO.	DATE	APP.	DATE	NO.	DATE	APP.	DATE
1	ADD C7 ON ORIENTATION & REV'D PER CUST. COMMENT	MR	4-23-81	1	11-4-81	MR	11-4-81	1	11-4-81	MR	11-4-81
2	REV'D PER CUSTOMER PRINT	MR	6-19-81	2	9-14-81	MR	9-14-81	2	9-14-81	MR	9-14-81
3	REV'D TO ELEVATE INSIDE THERMOCOUPLE 3" & IN ORIENTATION 1 1/2" WAS 1 1/2" (ECN 1212)	MR	4-23-81	3	4-23-81	MR	4-23-81	3	4-23-81	MR	4-23-81
4	REV'D PER ECN 1226 (FACE FINISH)	MR	4-23-81	4	4-23-81	MR	4-23-81	4	4-23-81	MR	4-23-81

THIS DRAWING AND THE INFORMATION REVEALED BY IT IS SUBMITTED WITH THE UNDERSTANDING THAT IT IS THE CONFIDENTIAL AND PROPRIETARY PROPERTY OF JOHN ZINK CO AND IS NOT TO BE DISCLOSED TO OTHERS WITHOUT WRITTEN PERMISSION UNAUTHORIZED USE IS EXPRESSLY FORBIDDEN ALL DOCUMENTS MUST BE RETURNED UPON REQUEST

ITEM: STARTUP FLARE TIP

**JOHN ZINK COMPANY**  
TULSA, OKLAHOMA

DETAILS OF JOHN ZINK STF-U-20 UTILITY FIELD FLARE W 3 ENERGY EFFICIENT PILOTS FOR: E.I. DUPONT DE NEMOURS

CERTIFIED DRAWING NUMBER B-F-X 53305-301

DATE: 4-23-81