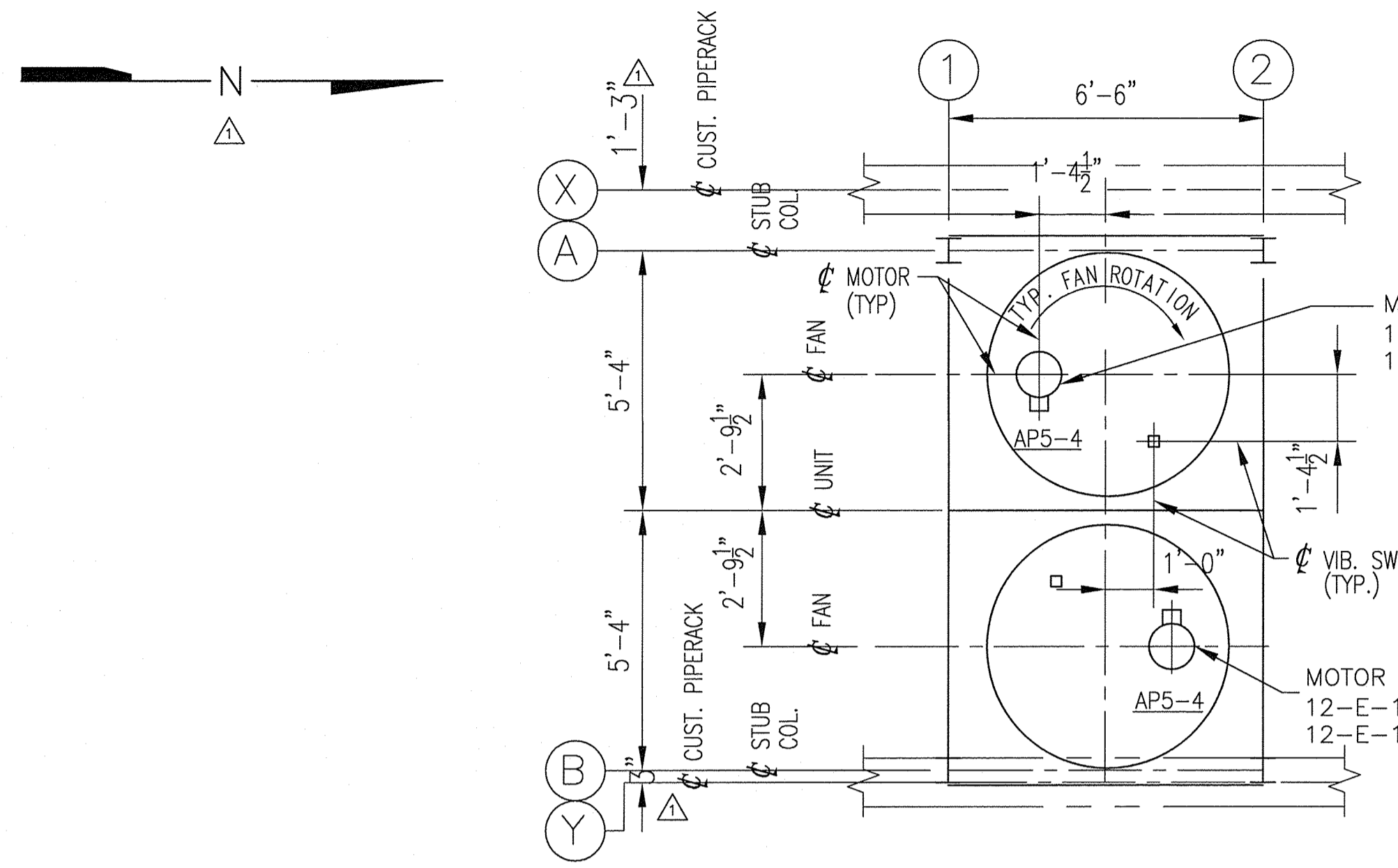


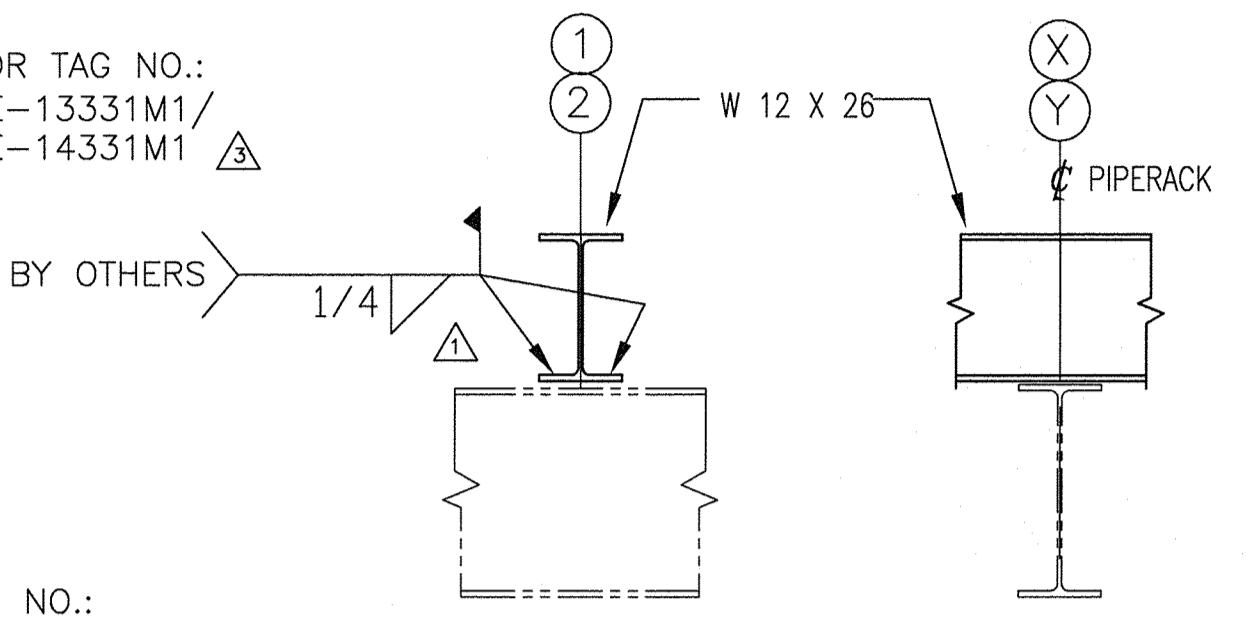
ITEM NO.	SERVICE	NO. UNITS	UNIT TYPE	UNIT MODEL	BUNDLE SIZE	NO. PASSES	SERVICE NOZZLES		STEAM COIL NOZZLES		FAN			* MOTOR		GEAR		
							INLETS	OUTLETS	INLET	OUTLET	DIA.	TIP SPEED	NO. BLD.	PITCH	H.P.	R.P.M.	SIZE	RATIO
12-E-13331/12-E-14331	EFFLUENT GAS AIR COOLER	2	2FPVA	6.50/05-124	6.50-124	4	10"-300# WNRF	6"-300# WNRF	---	---	5'	7900 FPM	4	5.5'	5	1750	-	-

MAX. BUNDLE WEIGHT	
BUNDLE DRY	BUNDLE WET
4,460 LBS	5,300 LBS

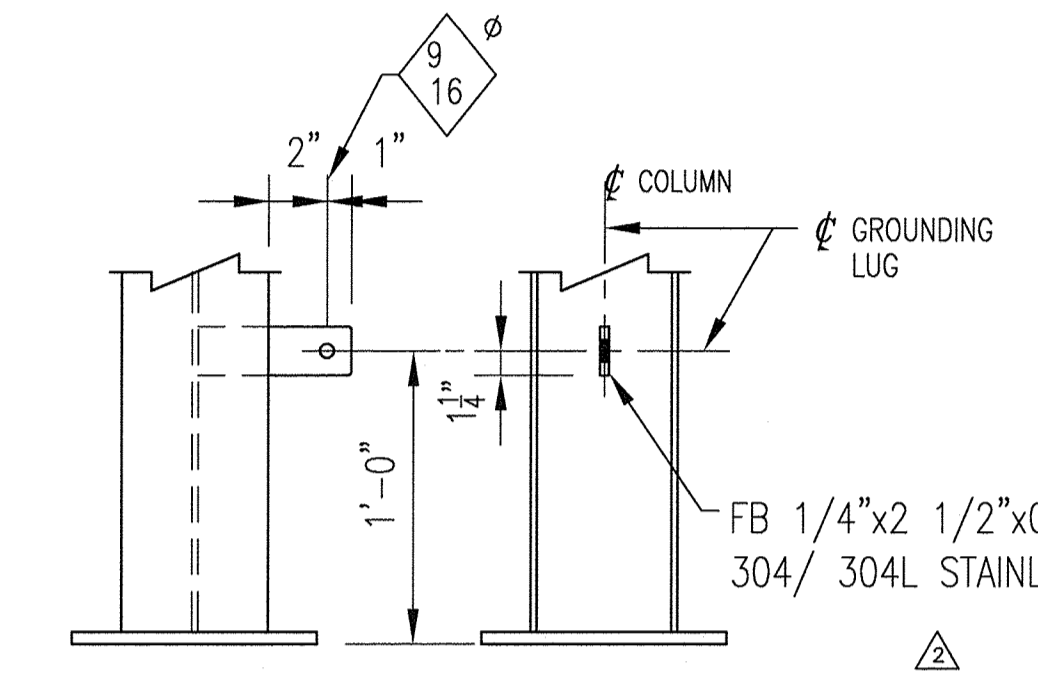
* 100% VFD (BY OTHERS)



(INLET END)
PLAN OF PLENUM
(ONE ITEM SHOWN TWO REQUIRED)

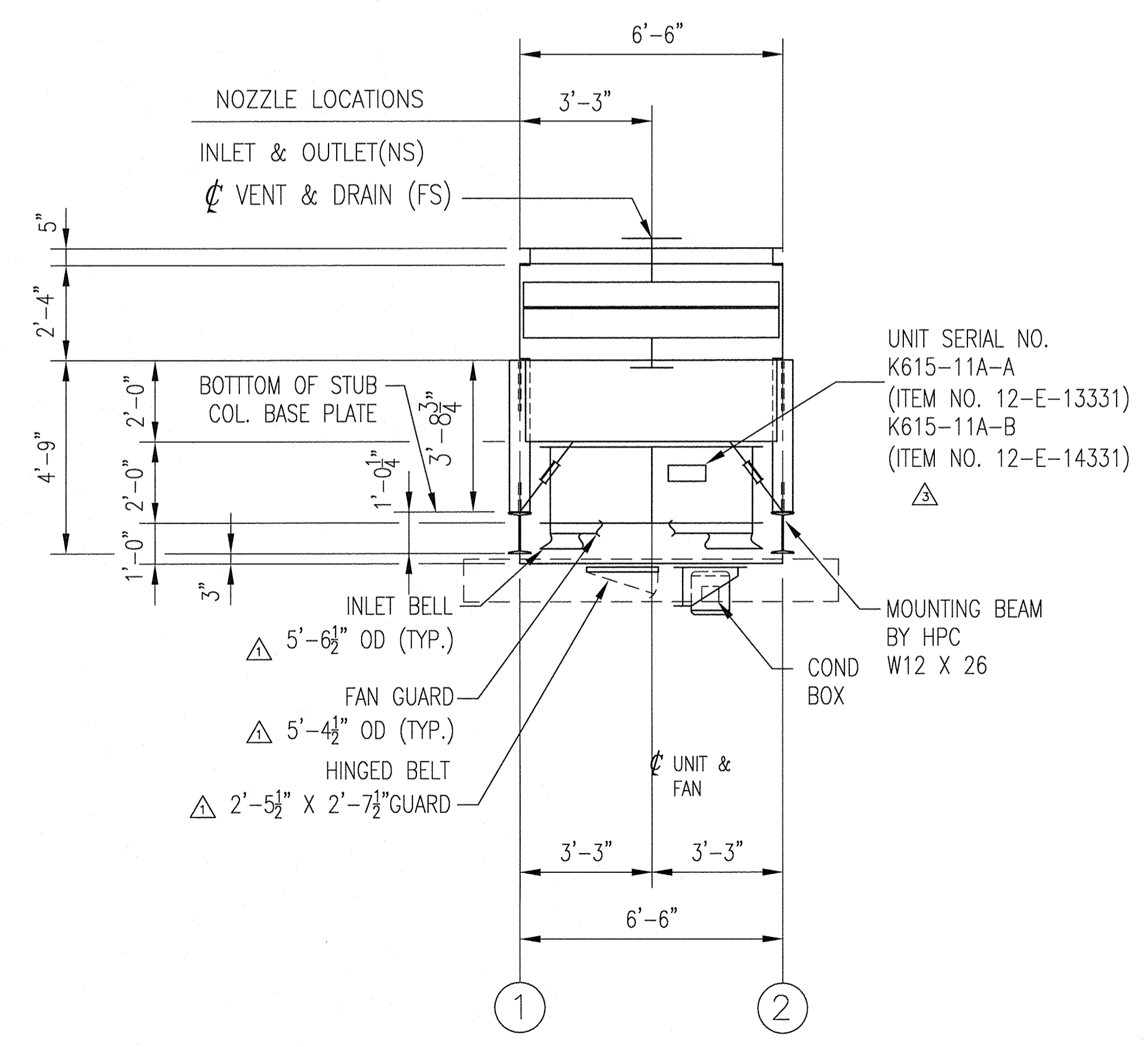


TYPICAL SUPPORT BEAM ANCHOR DETAIL

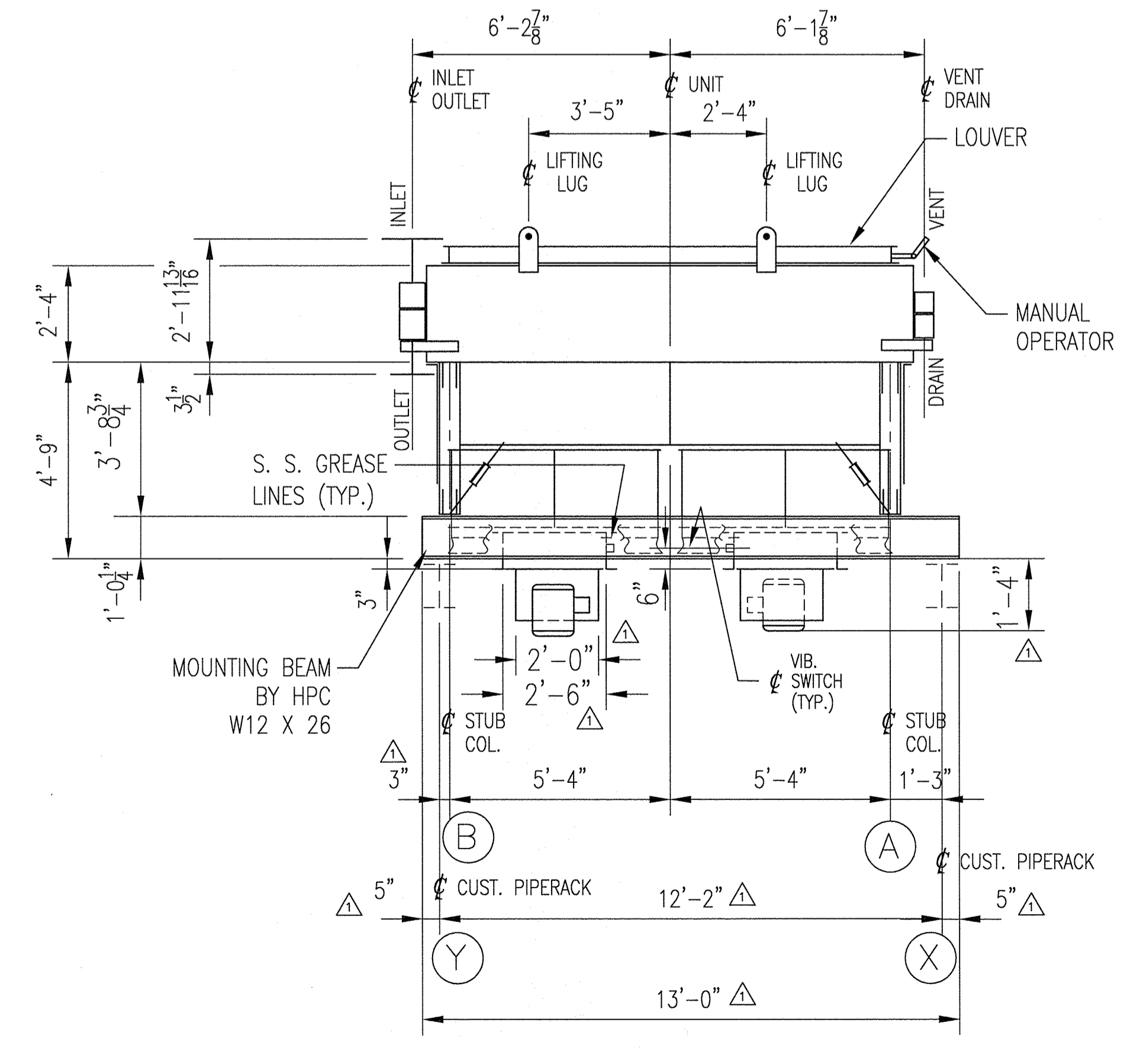


TYPICAL GROUNDING LUG DETAIL
© COL. 1A, & 2B

- NOTES**
- VENT & DRAIN:
 - VENT: 1"-6000# SOCKET W/ 1" PIPE NIPPLE CAP LOCATED ON ϕ OF HEADER AT TOP OF RETURN HEADER.
 - DRAIN: 1"-6000# SOCKET W/ 1" PIPE NIPPLE CAP LOCATED ON ϕ OF HEADER AT BOTTOM OF RETURN HEADER.
 - INSTRUMENT CONNECTIONS: NOT APPLICABLE.
 - NITROGEN PURGE REQUIREMENTS: YES.
 - NOZZLE COVER REQUIREMENTS: PER NITROGEN PURGE DETAILS.
 - PIPING NOTE: ALL TUBE BUNDLE FRAMES ARE DESIGNED FOR 5/16" HEADER MOVEMENT IN EITHER HORIZONTAL DIRECTION PERPENDICULAR TO TUBES.
 - BEARING: HPC NO. 50081 (UPPER)
HPC NO. 50082 (LOWER)
 - DRIVE: GATES POLY CHAIN GT CARBON.
 - VIBRATION SWITCH: MURPHY-VS-2-EX DPDT.
 - VALVE POSITIONER FOR AV FAN: NOT APPLICABLE.
 - LOUVER MATERIAL:
 - FRAME: ALUMINUM
 - BLADE: ALUMINUM
 - LOUVER OPERATION: MANUAL
 - FOUNDATION AND ANCHOR BOLTS: TO BE FURNISHED BY OTHERS.
 - COLOR CODE: BLUE.
 - COATING: SEE C1 DOCUMENT.
 - WALKWAY & LADDERS: NOT APPLICABLE.
 - HPC SHOP ASSEMBLY & BAY TESTING REQUIREMENTS:
 - PRESSEMBLY: BASE BAY ONLY.
 - DISASSEMBLY: NO.
 - MECHANICAL RUN-IN: ALL BAY.
 - NOISE TEST: NOT APPLICABLE.
 - FAN PERFORMANCE: NOT APPLICABLE.
 - VIBRATION TEST: NOT APPLICABLE.
 - SHIP UNIT: PER NOTE 16. LESS MOTORS, MOTOR MOUNTS, BELTS, & BELT GUARDS.
 - COLUMN LOADS: SEE REACTION CHART DWG RC1
 - BUNDLE COVER REQUIREMENTS: YES, PLYWOOD.
 - FIREPROOFING REQUIREMENTS: NOT APPLICABLE.
 - BUG SCREEN REQUIREMENTS: NOT APPLICABLE.
 - WIND SKIRT REQUIREMENTS: NOT APPLICABLE.
 - REMOVABLE FAN ASSEMBLY REQUIREMENTS: NOT APPLICABLE.
 - RTD REQUIREMENT: NOT APPLICABLE.
 - METRIC REQUIREMENTS: NOT APPLICABLE.
 - INLET BELLS REQUIREMENT: YES.
 - WORK THIS DWG WITH DWG. 11ASW1



FRONT ELEVATION
(LOOKING WEST)



SIDE ELEVATION
(LOOKING SOUTH)

ITEM NO.	DESCRIPTION	TAG NUMBER	SAP NUMBER
1	EFFLUENT GAS AIR COOLER	12-E-13331	10071251
	EFFLUENT GAS AIR COOLER FAN MOTOR #1	12-E-13331M1	10071252
	EFFLUENT GAS AIR COOLER FAN MOTOR #2	12-E-13331M2	10071253
2	EFFLUENT GAS AIR COOLER	12-E-14331	10071289
	EFFLUENT GAS AIR COOLER FAN MOTOR #1	12-E-14331M1	10071290
	EFFLUENT GAS AIR COOLER FAN MOTOR #2	12-E-14331M2	10071291

REV.	BY	DESCRIPTION	ECN	DATE	APP.
4	AZ	REVISED AS NOTED	06	16	HD
3	AZ	REVISED AS NOTED	03	04	HD
2	AZ	REVISED AS NOTED	03	04	HD
1	AZ	REV PER CUST APPROVAL DATED 1/8/15	02	20	HD

COPYRIGHT © HUDSON PRODUCTS CORPORATION
ALL RIGHTS RESERVED

HUDSON PRODUCTS CORPORATION
Registration No. F-11837
BEASLEY, TEXAS
FIN-FAN®

TITLE: GENERAL ARRANGMENT
ITEM No.: 12-E-13331 & 12-E-14331 BANK: A
FOR: FLUOR ENTERPRISES INC./REC SOLAR GRADE SILICON LLC
MOSES LAKE, WA

SCALE	NTS	DATE
DRAWN	ANA	12-9-14
CHECKED	HD	12-12-14
APPROVED	GLM	12-12-14
ENGINEER	DL	12-12-14

CUSTOMER'S P.O. No. JOB No. DRAWING No.
A5KM-4-0401-01/A5KM100011 K615 11A

Hudson Products Corporation

Fin-Fan[®] Air-Cooled Heat Exchanger Specification Sheet

 Item No. 12-E-13331 / 12-E-14331

 Job No. K615

 Proposal No. 14-1289

Texas Registration No. F-11837

Customer Fluor Enterprises, Inc. / REC Solar Grade Silicon LLC	Heat Exchanged, Btu/hr	718,000
Plant Location Moses Lake, WA	MTD. Eff. °F	182
Cust. Ref. No. A5KM-4-0401	Cust. P.O. No. A5KM-4-0401-01/A5KM100011	Transfer Rate, Btu/(hr•ft ² •°F)
Service Effluent Gas Air Cooler	Surface, ft ²	7.5
Bay Size 6.50/05-124	Model 2FPVA	Type Draft FORCED
No. Bays per Item 1	Total No. of Items 2	Clean Tube Transfer Rate
		8.87

PERFORMANCE DATA PER ITEM - TUBE SIDE

Fluid Name	Hydrogen (Case 2H 36")		IN	OUT
Total Fluid Entering, lb/hr	350	Temperature, °F	727	135
Dew Point, °F		Flow Rate, liq.		
Bubble Point, °F		lb/hr	349.9	349.9
Pour Point, °F		Water, lb/hr		
Freeze Point, °F		Steam, lb/hr		
Latent Heat, Btu/lb		Noncondensable, lb/hr		
Inlet Pressure, psig	4.45	Molecular Wt., vapor	2.02	2.02
Pressure Drop, psi		Molecular Wt., Noncond		
allowable	0.8	Density, liq.		
calculated	0.28	lb/ft ³	0.003	0.0056
Velocity, ft/sec		Specific Heat, liq.		
allowable		Btu/(lb•°F)	3.487	3.43
calculated		Thermal Conductivity, liq.		
Foul Resistance, (hr•ft ² •°F)/Btu	0.002	Btu/(hr•ft ² •°F)	0.181	0.1064
Hydrogen		Viscosity, liq.		
mole %		cp	0.015	0.0094
Partial Pressure, psia		Degree Control Process Outlet Temperature (+/-), °F		/

PERFORMANCE DATA PER ITEM - AIR SIDE

Face Velocity, sfm	620	Air Inlet Temp, °F	110
Air Flow Rate/Item, scfm	46,111	Air Outlet Temp, °F	124.4
Air Flow Rate/Fan, acfm	25,955	Min. Design Amb. Temp, °F	0
Mass Face Velocity, lb/(hr•ft ²)		Altitude, ft	1220
2 Static Pressure, in. Water	0.293	+ 0.041	Foul Resistance, (hr•ft ² •°F)/Btu

REMARKS

The following bundles are located in one bay:
 Customer design, check rated using HTRI Xace Ver. 7.0 sp1. This case controls the heat transfer surface area.
2 Total of 2 bays required.

NO.	DATE	REVISION	NO.	DATE	REVISION
2	06/15/15	Revised			
1	01/29/15	Revised			
0	12/12/14	Issued for approval			

Hudson Products Corporation

Fin-Fan[®] Air-Cooled Heat Exchanger Specification Sheet

Item No. 12-E-13331 / 12-E-14331(Case 2N)

Job No. K615

Proposal No. 14-1289

Texas Registration No. F-11837

Customer	Fluor Enterprises, Inc. / REC Solar Grade Silicon LLC	Heat Exchanged, Btu/hr	322,000
Plant Location	Moses Lake, WA	MTD. Eff, °F	184.7
Cust. Ref. No.	A5KM-4-0401	Cust. P.O. No.	A5KM-4-0401-01/A5KM100011
Service	Effluent Gas Air Cooler	Surface, ft ²	
Bay Size	6.50/05-124	Model	2FPVA
No. Bays per Item	1	Type Draft	FORCED
Total No. of Items	2	Finned	528
		Bare	528
		Clean Tube Transfer Rate	6.12
		Transfer Rate, Btu/(hr•ft ² •°F)	

PERFORMANCE DATA PER ITEM - TUBE SIDE

Fluid Name	Nitrogen (Case 2N 36")		IN	OUT
Total Fluid Entering, lb/hr	2,160	Temperature, °F	727	135
Dew Point, °F		Flow Rate, liq.		
Bubble Point, °F		lb/hr	2160	2160
Pour Point, °F		Water, lb/hr		
Freeze Point, °F		Steam, lb/hr		
Latent Heat, Btu/lb		Noncondensable, lb/hr		
Inlet Pressure, psig	4.45	Molecular Wt., vapor	28.01	28.01
Pressure Drop, psi		Molecular Wt., Noncond		
allowable	0.8	Density, liq.		
calculated	0.66	lb/ft ³	0.041	0.0783
Velocity, ft/sec		Specific Heat, liq.		
allowable		Btu/(lb•°F)	0.258	0.248
calculated		Thermal Conductivity, liq.		
Foul Resistance, (hr•ft ² •°F)/Btu	0.002	Btu/(hr•ft ² •°F)	0.0279	0.016
Hydrogen		Viscosity, liq.		
mole %		cp	0.0313	0.0189
Partial Pressure, psia		Degree Control Process Outlet Temperature (+/-), °F		/

PERFORMANCE DATA PER ITEM - AIR SIDE

Face Velocity, sfm	620	Air Inlet Temp, °F	110
Air Flow Rate/Item, scfm	46,111	Air Outlet Temp, °F	116.5
Air Flow Rate/Fan, acfm	25,955	Min. Design Amb. Temp, °F	0
Mass Face Velocity, lb/(hr•ft ²)		Altitude, ft	1220
Static Pressure, in. Water	0.295	Foul Resistance, (hr•ft ² •°F)/Btu	
	+ 0.041		

REMARKS

The following bundles are located in one bay:

Customer design, check rated using HTRI Xace Ver. 7.0 sp1. This specification sheet is issued to show the predicted performance of Nitrogen case only. This case controls tube side pressure drop.

NO.	DATE	REVISION	NO.	DATE	REVISION
2	06/15/15	Revised			
1	01/29/15	Revised			
0	12/12/14	Issue for approval			

Hudson Products Corporation

Fin-Fan[®] Air-Cooled Heat Exchanger Specification Sheet

 Item No. 12-E-13331/12-E-14331(No Quench)

 Job No. K615

 Proposal No. 14-1289

Texas Registration No. F-11837

Customer Fluor Enterprises, Inc. / REC Solar Grade Silicon LLC		Heat Exchanged, Btu/hr	793,000
Plant Location Moses Lake, WA		MTD. Eff. °F	229.7
Cust. Ref. No. A5KM-4-0401	Cust. P.O. No. A5KM-4-0401-01/A5KM100011	Surface, ft ²	Transfer Rate, Btu/(hr•ft ² •°F)
Service Effluent Gas Air Cooler		Finned	
Bay Size 6.50/05-124	Model 2FPVA	Type Draft FORCED	6.54
No. Bays per Item 1	Total No. of Items 2	Bare	528
		Clean Tube Transfer Rate	7.97

PERFORMANCE DATA PER ITEM - TUBE SIDE

Fluid Name		Hydrogen (Case 2H 36")		IN	OUT
Total Fluid Entering, lb/hr	280	Temperature, °F		950	135
Dew Point, °F		Flow Rate, lb/hr	liq.		
Bubble Point, °F			vap.	280	280
Pour Point, °F		Water, lb/hr			
Freeze Point, °F		Steam, lb/hr			
Latent Heat, Btu/lb		Noncondensable, lb/hr			
Inlet Pressure, psig	4.45	Molecular Wt., vapor		2.02	2.02
Pressure Drop, psi		Molecular Wt., Noncond			
allowable	0.8	Density, lb/ft ³	liq.		
calculated	0.19		vap.	0.0025	0.0056
Velocity, ft/sec		Specific Heat, Btu/(lb•°F)			
allowable				3.508	3.43
calculated		Thermal Conductivity, Btu/(hr•ft•°F)			
Foul Resistance, (hr•ft ² •°F)/Btu	0.002			0.2076	0.1064
Hydrogen mole %		Viscosity, cp			
Partial Pressure, psia				0.0174	0.0094
		Degree Control Process Outlet Temperature (+/-), °F			/

PERFORMANCE DATA PER ITEM - AIR SIDE

Face Velocity, sfm	620	Air Inlet Temp, °F	110
Air Flow Rate/Item, scfm	46,111	Air Outlet Temp, °F	125.9
Air Flow Rate/Fan, acfm	25,955	Min. Design Amb. Temp, °F	0
Mass Face Velocity, lb/(hr•ft ²)		Altitude, ft	1220
2 Static Pressure, in. Water	0.297	+ 0.041	Foul Resistance, (hr•ft ² •°F)/Btu

REMARKS

The following bundles are located in one bay:

Customer design, check rated using HTRI Xace Ver. 7.0 sp1. This specification sheet is issued to show the predicted performance of No Quench case only.

NO.	DATE	REVISION	NO.	DATE	REVISION
2	06/15/15	Revised			
1	01/29/15	Revised			
0	12/12/14	Issued for approval			

Hudson Products Corporation

Fin-Fan[®] Air-Cooled Heat Exchanger
Specification Sheet

Item No. 12-E-13331 / 12-E-14331

Job No. K615

Proposal No. 14-1289

Texas Registration No. F-11837

TUBE BUNDLE DESIGN, MATERIAL, and CONSTRUCTION

GENERAL DESIGN				HEADER				TUBE			
Design Pressure, psig	60	-7.5		Type Plug Header				Type	Seamless		
Test Pressure, psig	363			Header Material				Material	Stainless Steel		
Design Temp, °F	980	250		ASME SA-240,304/304L				ASME	SA-213,TP304/304L		
Min Design Metal Temp, °F	-20			Plug Material				OD, in	1		
Nom. Size (WxL)	6'-6"		x 12'	Gasket Material				Wall Thk, in.	0.065 MW		
No. of Bundles/Bay	1			Tube Rows		4		No. of Passes		4	
Bundles/Item in Parallel	1			Corrosion Allow, in				0.0625			
Tube Slope, in/ft				Split Header				After 1st & 2nd Pass			
None								Length, ft.	12	Layout	Triangular
								Pitch, in.	1.75		
ASME Code	Yes	Stamp	Yes	NOZZLE	No.	Size, in	Rating & Facing		Tube End Welding	2 Pass Str	
API 661(13)	National Board	Yes		Inlet	1	10.	300 WNR		Tube End Coating	None	
Special Service	Hydrogen Service			Outlet	1	6.	300 WNR		Tube Inserts	None	
STRUCTURAL - WALKWAYS				Vent	1	1.	6000 Scolet		Rows/Pass	1-1-1-1	
Mounting	Piperack			Drain	1	1.	6000 Scolet				
Pipe-Rack Centers	14'			Pressure							
Walkways	By Others			Temp							
Walkway Surface	N/A			Cleaning							
Ladders	N/A			Nozzle Loads				2.0 x API 661 (2013)			
Bundle Frame Coating	Galvanized			Nozzle Attachment				Set-On			
Structural Steel Coating	Galvanized			Trans/Pipe Min Wall, in				API (13) 7.1.9.6			
Walkway Coating	N/A			Corrosion Allow, in.				0.0625			
								Selection Temperature, °F			

MECHANICAL EQUIPMENT

FAN				DRIVER				SPEED REDUCER				
Manufacturer				Cofimco				Manufacturer				Siemens
Model				1524-4-24L/B3T				Manufacturer				Gates
Type		Electric Motor		- IEEE 841		Type				Poly Chain(GT(Carbon)		
No./Bay	2	Pitch Angle	5.5°	No./Bay	2	Frame	184T		No./Bay	2	S.F.	1.8
Diameter, ft.	5	No. of Blades	4	Enclosure	TEFC		Model		SD100 IEEE841			
Tip Speed, fpm	7900	RPM	500	HP/Driver	5		S.F.		1.15			
BHP/Fan @ Design Ambient	2.7			RPM	1750			AGMA HP Rating				
BHP/Fan @ Min Ambient	3.4			Volt				460	Phase	3	Cycle	60
Pitch Adjustment	100% Manual			Space Heaters				No				
AV Signal, psig to	Supply, psig			Var. Freq. Drive				100% (By Others)				
Blade Material	Aluminum			Mounting				Vertical Shaft-up				
Hub Material	Steel			Area Class				Non-Hazardous				
Inlet Bells	Yes	Noise Level	SPL 2 82 DB(A) @ 3' below the fan guard. One fan running.									

CONTROLS - AIR SIDE

HEATING COIL				No	AIR RECIRCULATION				No								
Fluid Name				Header (Matl/Type)				Type									
Flow Rate, lb/hr				ASME				Windskirts									
Temperature (in/out), °F				Tube Rows				No. of Passes		LOUVERS		Yes					
Inlet Pressure, psig				Tube (Matl/Type)				Material				Aluminum	API 661	13			
Press Drop (Allow/Calc), psi				ASME				Inlet				N/A	Sqft/Bay				
Press (Design/Test), psig				O.D., in.				Length, ft.				Outlet		Manual	Bypass	N/A	
Design Temperature, °F				Wall Thickness, in				Blade Type				Parallel					
Corrosion Allow, in.				No. of Tubes/Coil				Pitch, in.		Signal				mA	to	Supply	
ASME Code				Stamp				Fin (Matl/Type)				MISCELLANEOUS					
NOZZLE	No.	Size, in	Rating & Facing		O.D., in.				No./Inch				Fan Guards		Yes	Hail Guards	No
In-Out				Stock Thickness, in.				Bug Screens				No					

Hudson Products Corporation

Fin-Fan[®] Air-Cooled Heat Exchanger

Specification Sheet

Item No. **12-E-13331 / 12-E-14331**

Job No. **K615**

Proposal No. **14-1289**

Texas Registration No. F-11837

HEADER DESIGN REMARKS

GENERAL		NOZZLES			MATERIAL REQ'MT / TESTING		
Nitrogen Purge	Yes, w/gauge & valve	Flange Finish	125-250 AARH		Flange	None	
Slide Pads (Type)	No	Flange Gaskets	304SS Spiral Wound		Pipe	N/A	
Slide Pad Location	N/A	Nozzle Cover	1/4" stl w/neoprene gskt		Transition	Seamless	
Lethal Design	No				Plate	Standard	
Total Header Movement	0.625"	Conn.	Location		Tube	Industry Standard	
Thrust Blocks	No	Vent	Return Header (set-on)		Plug	None	
Weld Maps	On Header Detail Drawing	Drain	Return Header (set-on)		Plug Type	Shoulder (forged)	
TEMA	R-Tube Hole Grooves Only	Press.	None		Mat'l Origin	USA, Japan, Canada	
NACE	No	Temp.	None			Western Europe	
		Clean.	None				
HEADER COATING				Coats	DFT (mils)	Color	
Surface Prep	None					Header Plate	Minimum Thickness, in
Primer	None					Tube Sheet	API 661 (2013)
Intermediate	None					Plug Sheet	API 661 (2013)
Finish	None					Top and Bot.	API 661 (2013)
						End Plate	API 661 (2013)

SHOP INSPECTION & TEST PLAN

MATERIAL INSPECTION / TESTING		WELD INSPECTION			BUNDLE TESTING	
Mill Test Reports	Yes	Weld PMI	Yes, Per Cust Spec		Hydrostatic Test	ASME Code
Mill Certs.	Yes	Radiograph	Spot		Submerged Test	No
PWHT	No	Part / Stiff Weld NDE	None		Soap Test	No
Mat'l PMI	Yes, Per Cust Spec	Tube End Weld NDE	Air and Soap Test		ASSEMBLY & BAY TESTING	
Nozzle Cut Out	PT	Tube Mock-Up	QW-193		Preassembly	Base Bay (s) Only
Plate Edges	PT	Hardness Test	None		Disassembly	No
		Welds	Root Pass	Final	Mechanical Run-In	All Bays
		Ext. Hdr Weld	None	PT	Noise	No
		Nozzle to Header	PT	PT	Fan Performance	No
		Flange to Pipe	None	PT	Vibration	No

SPECIALS

WALKWAY & LADDERS		CONTROLS - AIR FAILURE		LOUVER ACTUATORS		
Design Specification	N/A	AV Fans	N/A		Outlet	N/A
Header WW Width	N/A	Outlet Louvers	N/A		By Pass	N/A
Mech. WW Width	N/A	Inlet Louvers	N/A		Inlet	N/A
Outrigger Width	N/A	By Pass Louvers	N/A		Manual Over-ride	Manual Lever
Side Access Width	N/A	ACCESSORIES				
Type Handrails	N/A	ND Removable Fan Assembly	No	Motor Starters	No	
Type Grating	N/A	Natural Draft Stack	No	Motor Start-Stop Switch	No	
Type Gates	N/A	Spreader Bar	No	Motor Removal Beams	HPC Standard	
ND Maint. Grids	N/A	Fireproofing Clips	No	Metric Drawings	No	
SHIPMENT		Spare Parts	No		VFD Controls	Supplied by Others
Width Limitation	None Specified			Grease Lines	Stainless Steel	
Weight Limitation	None Specified	Unit Support Beam	See Remark		Fan Shafts	AISI 1144 Stressproof
Bundle Covers	3/8" Plywood	Civil Eng. Stamp	No		Anti-Windmill Device	No
Crating	No	Access Door	No			

REMARKS

[a] All stainless steel shall be 304/304L dual certified, [b] 13' spanning beam beneath stub columns (no legs or braces required), [c] 2 Grd Lugs, [d] after hydro ship to Delstar Metal Finishing to pickle and passivate the bundle internals per Delstar procedure, [e] Motor SF is 1.0 on VFD, [f] Provide nipple on vent & drain sockolet.

BY: BENNY B. RECOMMENDED SPARE PARTS FOR JOB: K615 NOTE: ORDER BY PART NUMBER													
L I N E I T E M	Q U A N T I T Y	DATE	REV	DTL	CHCKD	BANK	A	DATE: 1/26/2016 JOB: K615-RSP2					
		1/26/2016	0	AZ	HD	COLOR	BLUE	CUSTOMER: FLUOR ENTERPRISES, INC./ REC SOLAR GRADE SILICON LLC					
								SHIPPING ADDRESS: MOSES LAKE, WA					
								P.O. No.: A5KM-4-0401-01/A5KM100011 SHT. 1 OF 1					
MATERIAL							ITEM NO.	12-E-13331	12-E-14331	DEL'Y DATE	4/6 WKS	PROJ. MGR:	DT
							PART NO.	DESCRIPTION	TOTAL QTY'S ON JOB:	RECOMMENDED QTY	DELIVERY	UNIT PRICE	TOTAL PRICE
1	16	BLADE,FAN,COFIMCO,1524/04/24L/B3T					15240424LB3T	FAN BLADE	16	3	6 WKS	TBD	TBD
2													
3													
4	4	SPROCKET,8MX-32S-12					69402	SPROCKET	4	1	6 WKS	50.00	50.00
5	4	BUSHING,TL,1210,1.1/8 BORE,					66735	BUSHING	4	1	6 WKS	8.00	8.00
6													
7	4	SPROCKET,8MX-112S-21					66330	SPROCKET	4	1	6 WKS	194.00	194.00
8	4	BUSHING,TL,2517,2.1/2 BORE					60730	BUSHING	4	1	6 WKS	17.00	17.00
9													
10	4	BELT,POLYCHAIN,8MGT-1440-12					60572	BELT	4	1	6 WKS	34.00	34.00
11													
12	4	SWITCH,VIBR,MURPHY,VS-2-EX					51505	VIB SWITCH	4	1	6 WKS	650.00	650.00
13													
14	4	HPC UPPER BEARING					50081	BEARING	4	1	6 WKS	375.00	375.00
15	4	HPC LOWER BEARING					50082	BEARING	4	1	6 WKS	575.00	575.00
16													
17	672	GASKET,PLUG,G40,SA240,304SS					28058	GASKETS	672	134	6 WKS	0.80	108.00
18	672	PLUG,P430,SA182,304/304L					56630	PLUGS	672	134	6 WKS	11.00	1,474.00
19													
20	1	PROTRACTOR,DIGITAL,CUSTOM PRO 360					62375	DIGITAL	1	1	6 WKS	630.00	630.00
21								PROTRACTOR					
22													
23													
24													
25													
26													
											SUB-TOTAL THIS PAGE		\$4,115.00
"PRICES SUBJECT TO CHANGE WITHOUT NOTICE!"													
SPARE PARTS RECOMMENDATION FOR TWO YEARS													
HUDSON PRODUCTS CORPORATION CALL 1-800- 634-9160 TO ORDER SPARE PARTS DATE PROCESSED:													