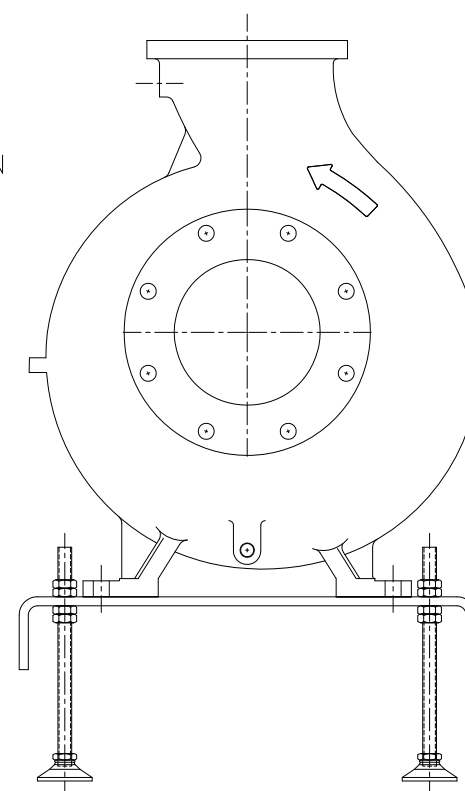
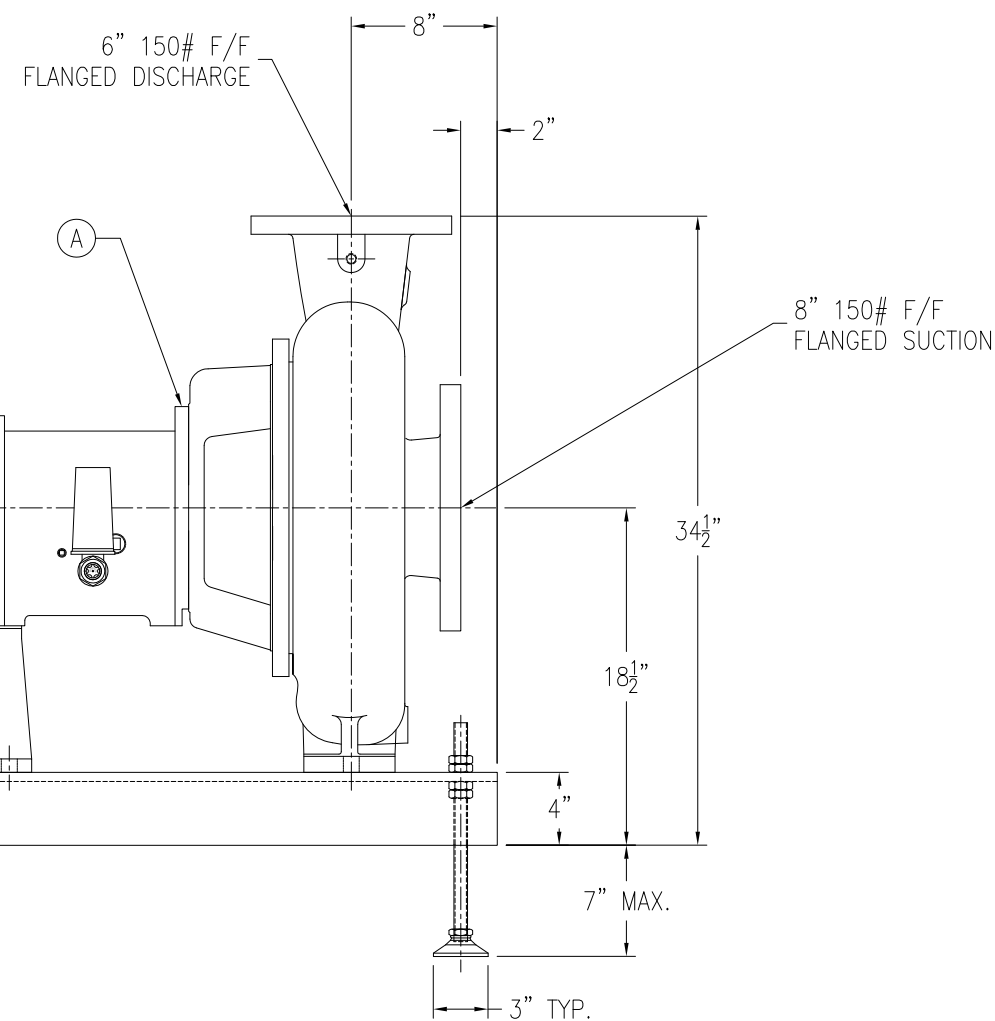
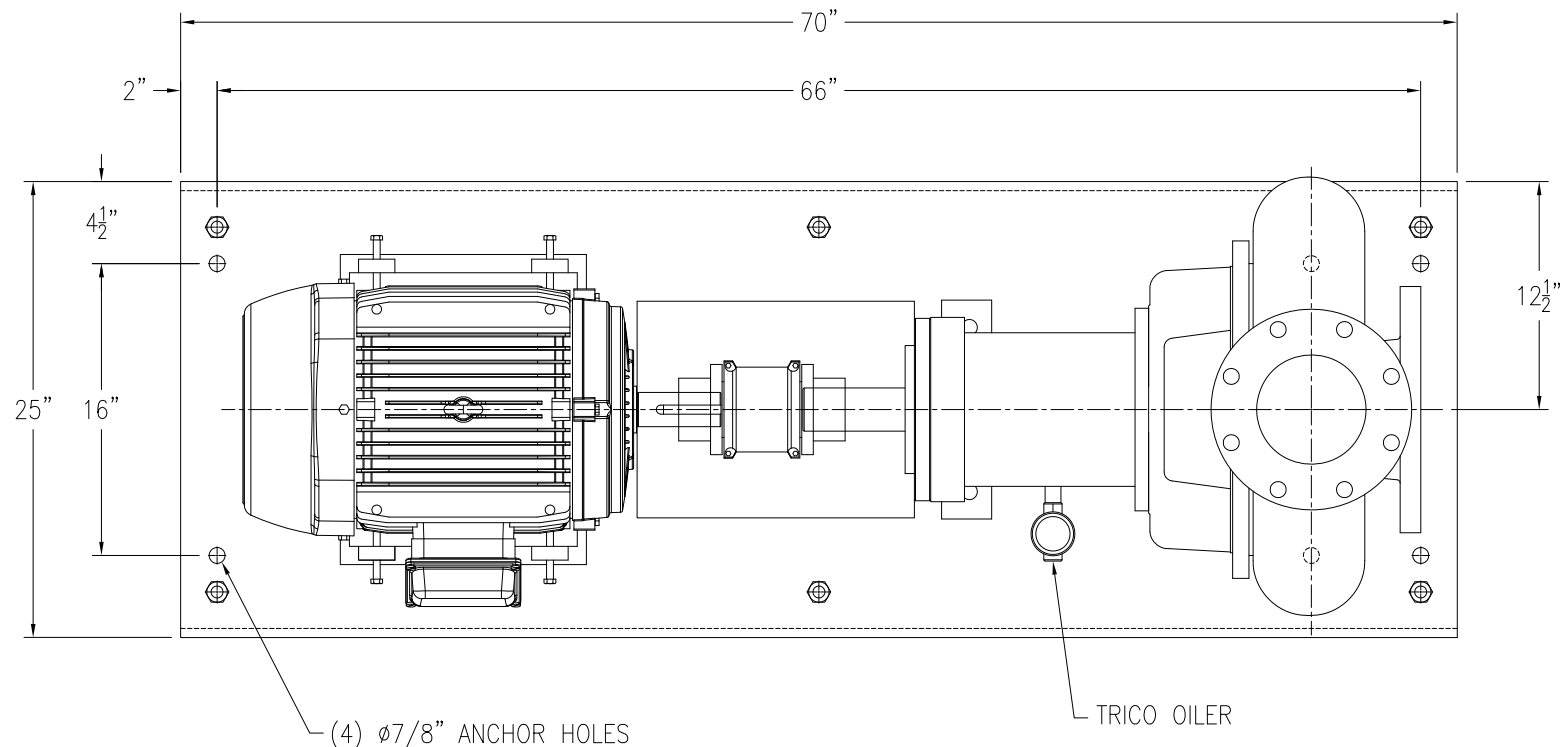


7550 COMMERCE CIRCLE TRUSSVILLE, AL 35173
 ☎ (205) 655-0434 📠 (205) 655-0465

COMPONENT	WEIGHT (LBS.)
PUMP	560
MOTOR	380
GEAR REDUCER	-
COUPLING(S)/GUARD(S)	50
BASE	400
TOTAL	1390

GENERAL LAYOUT		Customer:		
PROJECT NO. 4115.06615 ACH TEMPERED WATER LOOP PUMP		EVONIK DEGUSSA THEODORE, AL		
ALL TOLERANCES ARE ± 1/8" UNLESS OTHERWISE NOTED		PO Number 4700470851		
DESIGNED BY: DGL	Job Number	Drawing Number		
DRAWN BY: DGL	1025273	GW-060		
CHECKED BY:	This document and the information contained herein, is the property of Voigt-Abernathy Sales Corporation, and may not be used, stored, copied or transferred by any means, electronic, mechanical or otherwise; without express written permission from Voigt-Abernathy Sales Corporation. © 2005 Voigt-Abernathy Sales Corporation			
APPROVED BY: JA				
SCALE: NOT TO SCALE				
Rev.	Date	Description	By	Chk.
0	08/28/13	FOR APPROVAL	DGL	JA



ITEM	QTY	SOURCE	DESCRIPTION	PART NUMBER
A	1	GRISWOLD	PUMP, ANSI, 8X6X-13 XL, DUCTILE IRON CASING AND IMPELLER, 316SS SOLID SHAFT (NO SLEEVE), SINGLE ROW DEEP GROOVE INBOARD RADIAL BEARING, DOUBLE ROW ANGULAR CONTACT OUTBOARD THRUST BEARING, LARGE CAPACITY OIL SUMP, TRICO WATCHDOG OILER, MAGNETIC DRAIN PLUG, BRONZE LABYRINTH OIL SEALS FOR INBOARD AND OUTBOARD, ARAMID FIBER WITH EPDM CASING GASKET, GLASS-FILLED IMPELLER O-RING, EXTERNAL IMPELLER ADJUSTMENT FEATURE, STANDARD BORE STUFFING BOX, JOHN CRANE TYPE 4610 SINGLE CARTRIDGE MECHANICAL SEAL WITH C vs SiC FACES AND VITON O-RINGS, 10.65" IMPELLER DIAMETER FOR 968 GPM @ 93' TDH	GRWA 811X8613DDSCSNNNS-CSV
B	1	HYUNDAI	MOTOR, 15 HP, 1200 RPM, 284T FRAME, TEFC, 1.15 SF, 230-460/3/60, CLASS 1, DIV 2, GROUPS A, B, C & D	WWEA HHI15-12-284T
C	1	GRISWOLD	GUARD, COUPLING, ANSI, BARREL-TYPE, SS	GRWB 24968-811XL-ASS-D
D	1	FALK	HUB, COUPLING, SIZE 1050T31, 1.875" BORE	PTRA 1050T311875
E	1	FALK	HUB, COUPLING, SIZE 1050T31, 2.375" BORE	PTRA 1050T312375
F	1	FALK	COVER/GRID ASSEMBLY, 1050T31	PTRA 1050T31
H	1	VA	BASE, FORMED, CARBON STEEL	MISC GW-060B