

DESIGN NOTES & CONSTRUCTION NOTES

1. VESSEL DESIGNED IN ACCORDANCE WITH ASME SECT. VIII DIV. 1, 2004 EDITION, 2005 ADDENDA.
2. NATIONAL BOARD REGISTRATION & U-STAMP REQUIRED.
3. WIND ANALYSIS PER ASCE 7-02.
4. DESIGN:
INTERNAL PRESSURE: 45 PSIG
EXTERNAL PRESSURE: FULL VACCUUM
TEMPERATURE: 302°F
MDMT: -20 °F
C.A.-INCHES: 0
JOINT EFFICIENCY: 100%
SPECIFIC GRAVITY: 1.0
SPECIAL SERVICE: LETHAL

9. VOLUME:
TOTAL: 1,500 USG
10. SURFACE FINISH & COATING:
POWER WASH WITH CLEAN WATER AND SS FLUX SOLUTION.
INTERNAL WELDS: PICKLE USING AVESTA PICKLING PASTE OR APPROVED EQUIVALENT

5. OPERATION:
PRESSURE: 2.9 PSIA
TEMPERATURE: 25°F

6. MATERIALS OF CONSTRUCTION:
SHELL: SA-240 316/316L
HEADS: SA-240 316/316L
NOZZLE NECKS: SA-312 TP316/316L SMLS
NOZZLE FLANGES: SA-182 F316/316L
MANWAY NECK: SA-240 316/316L
MANWAY FLANGE: SA-182 F316/316L
GASKETS: GARLOCK 3500
BOLTING: STUDS SA-193 B8M
NUTS: SA-194 Gr 8M
REPADS: SA-240 316/316L
LEGS: SA-479 316L

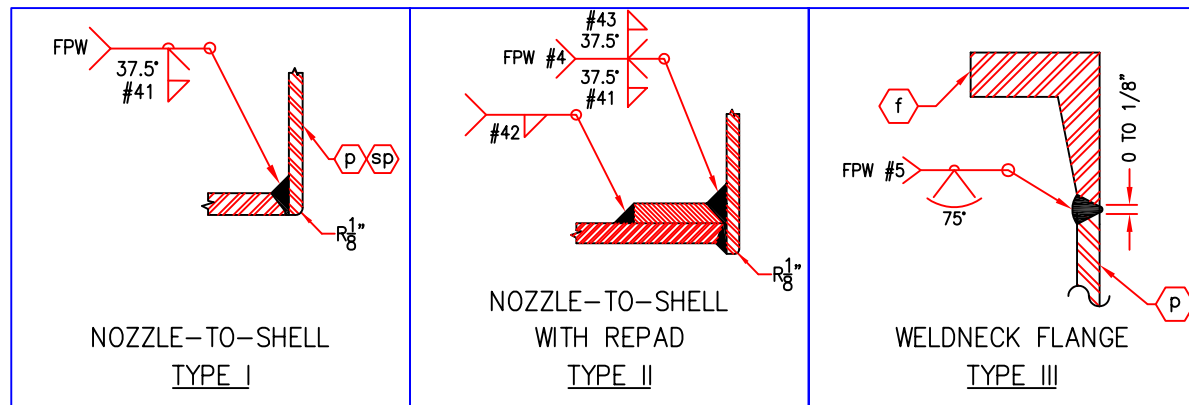
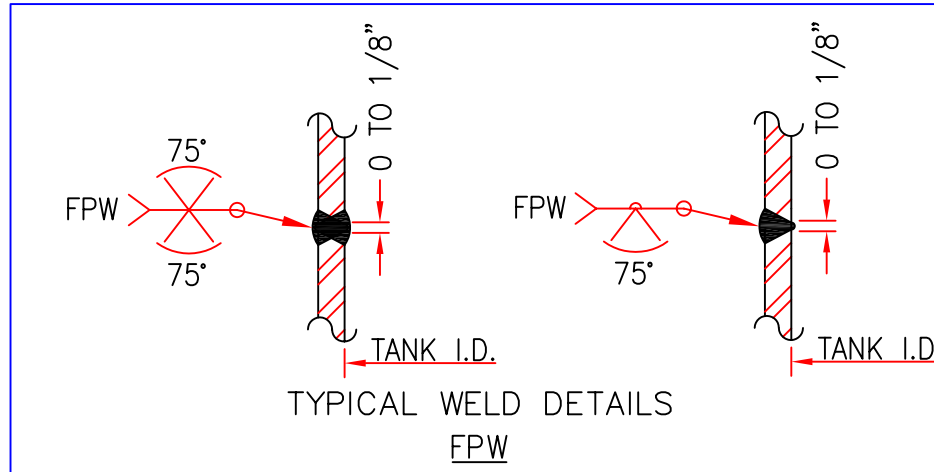
7. TESTING:
RADIOGRAPHY: FULL, PER UW-51
HYDROTEST PRESSURE: 58.5 PSIG
PMI TESTING PER DEGUSSA 20.230.035 REV. 0
PNEUMATIC: 10 PSIG ALL REPADS
LIQUID PENETRANT: ROOT AND FINAL NOZZLE WELDS

8. WEIGHT: INCLUDING INSULATION
EMPTY: 1,600 LBS
FULL OF WATER: 5,200 LBS

11. PROTECT ALL MACHINE SURFACES AND FLANGE FACES WITH 3/8" PLYWOOD.
12. FLANGE BOLT HOLES TO STRADDLE VESSEL CENTERLINES, U.N.O.
13. 1/4" NPT WEEP HOLES TO BE DRILLED IN ALL REPADS.
14. ALL PRESSURE RELIEF DEVICES BY OWNER.
15. COLD FORMED HEADS SHALL BE 100% LIQUID PENETRANT EXAMINED IN THE KNUCKLE REGION.
16. REQUIRED SHACKLE SIZE = 1" (SAFE WORKING LOAD = 5.85 TONS EA.)

CIF WELD PROCEDURES

- 1) CIF-GTFC-P8
- 2) CIF-FC-P8-1



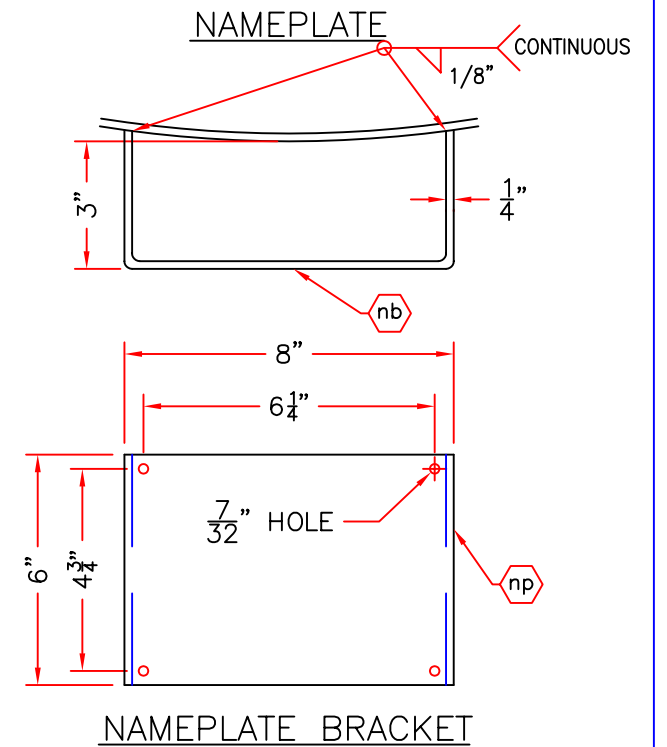
NOZZLE ATTACHMENT

NB: ??

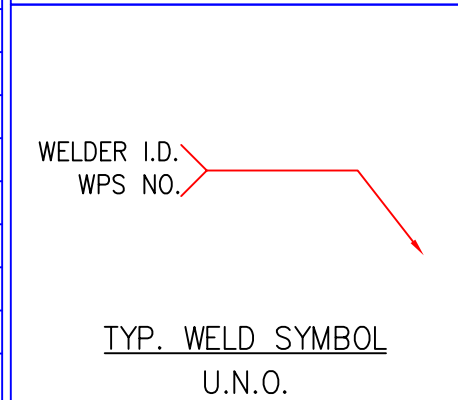
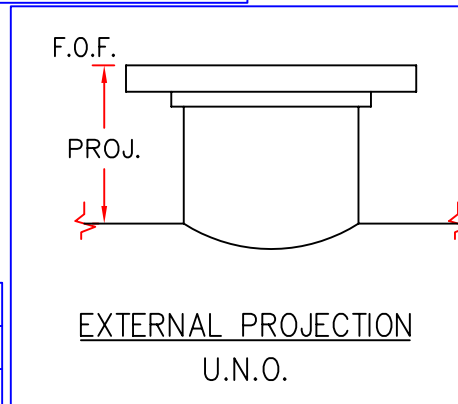
CERTIFIED BY
COASTAL INDUSTRIAL FABRICATIONS, INC.
THEODORE, AL.

U M.A.W.P. 45/FV PSIG AT 302 °F
W M.D.M.T. -20 °F AT 45/FV PSIG
RT-1 MFR. SERIAL No. 05-036C
LT YEAR BUILT 2006

ITEM NO: 3052.00



NAMEPLATE BRACKET



NOZZLE MARK	NPS	SCH.	t	RATE	FACE	TYPE	INT. PROJ.	EXT. PROJ.	TYPE	WELD #41	WELD #42	WELD #43	WELDER I.D. #1	WELDER I.D. #2	THK	O.D.	REPAD	SERVICE	NOTES	
A1	3"	STD	.216	150#	R.F.	W.N.	FLUSH	SEE ELEV.	I, III	3/16"	-	-	-	-	-	-	-	-	INLET FROM 3050	w/ 1 1/2" DIP TUBE
A2	3"	STD	.216	150#	R.F.	W.N.	FLUSH	SEE ELEV.	I, III	3/16"	-	-	-	-	-	-	-	-	INLET FROM 3061	w/ 1 1/2" DIP TUBE
A3	2"	STD	.154	150#	R.F.	W.N.	12"	6"	I, III	3/16"	-	3/16"	-	-	-	-	-	-	INLET FROM 3054	
B1	3"	STD	.216	150#	R.F.	W.N.	FLUSH	6"	I, III	3/16"	-	-	-	-	-	-	-	-	OUTLET TO 3053	
H1	12"	STD	.375	150#	R.F.	W.N.	FLUSH	6"	II, III	3/16"	3/16"	-	-	-	3/16"	18.75"	-	-	3054 COOLER	
L1	3"	STD	.216	150#	R.F.	W.N.	FLUSH	SEE ELEV.	I, III	3/16"	-	-	-	-	-	-	-	-	LEVEL INSTRUMENT	
L2	3"	STD	.216	150#	R.F.	W.N.	FLUSH	6"	I, III	3/16"	-	-	-	-	-	-	-	-	LEVEL INSTRUMENT	
L3	3"	STD	.216	150#	R.F.	W.N.	FLUSH	6"	I, III	3/16"	-	-	-	-	-	-	-	-	LEVEL INSTRUMENT	
M1	20"	-	.375	150#	R.F.	W.N.	FLUSH	6"	II, III	3/16"	3/16"	-	-	-	3/16"	25.5"	-	-	MANWAY	w/ BLIND AND DAVIT
T1	1.5"	STD	.145	150#	R.F.	W.N.	FLUSH	6"	I, III	3/16"	-	-	-	-	-	-	-	-	TEMP. INSTRUMENT	
V1	2"	STD	.154	150#	R.F.	W.N.	FLUSH	SEE ELEV.	I, III	3/16"	-	-	-	-	-	-	-	-	VENT TO FLARE	

REV.	DESCRIPTION	DATE
A	FOR APPROVAL	1/23/2006

COASTAL INDUSTRIAL FABRICATIONS, INC.
8517 BELLINGRATH RD. THEODORE, AL 36582
PHONE(251)653-5315 FAX(251)653-4897

DEGUSSA CORPORATION
THEODORE, AL

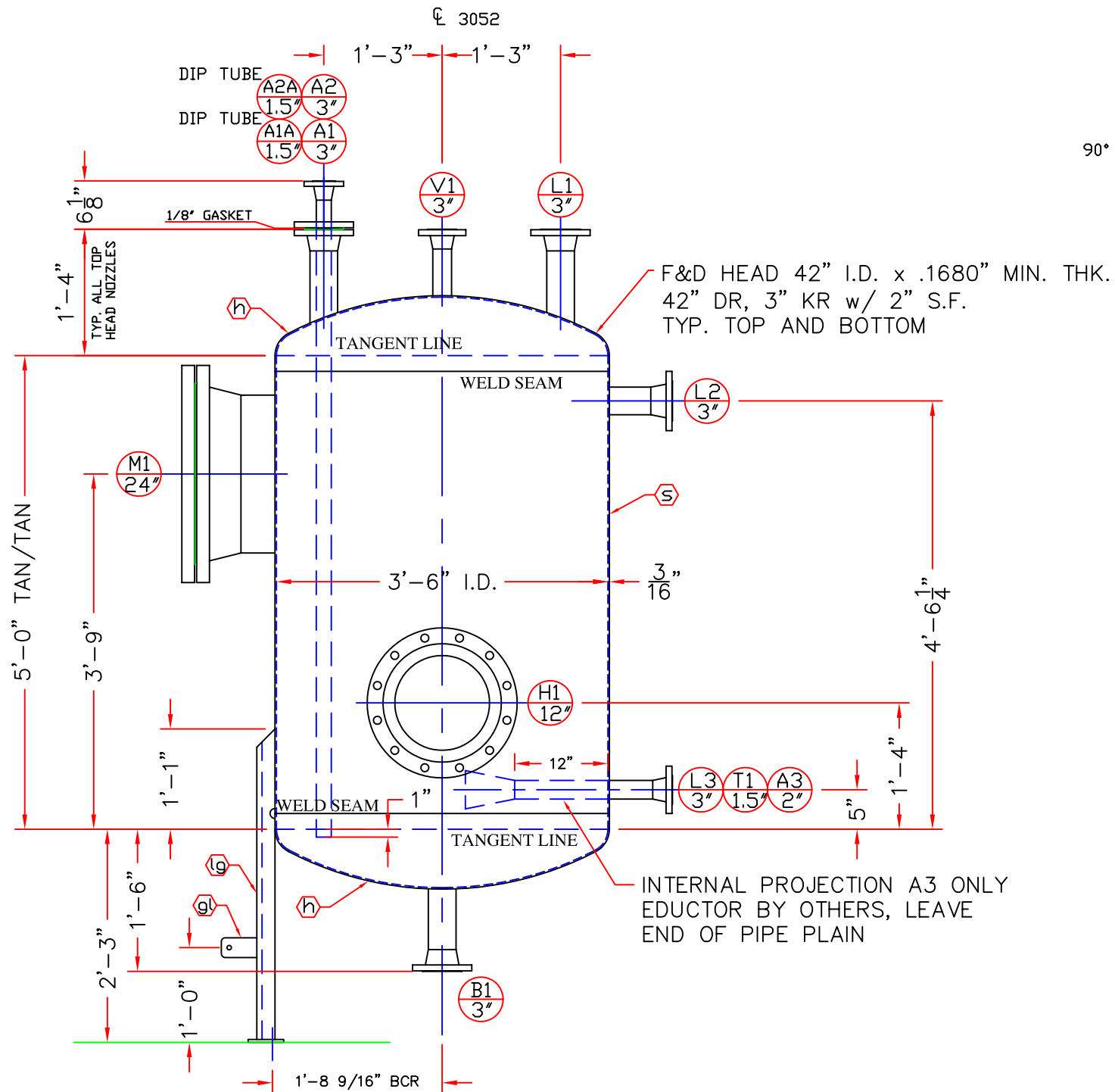
PROJECT NO: C0150.10002	POS. 3052 DISTILLATE RECEIVER TANK DESIGN SPECS
----------------------------	---

SCALE: N.T.S.	JOB NO. 05-036C	DWG. NO. 05-036B/C	REV. A
------------------	--------------------	-----------------------	-----------

P.O. NO. 4500154835 SHT. 1 OF 4

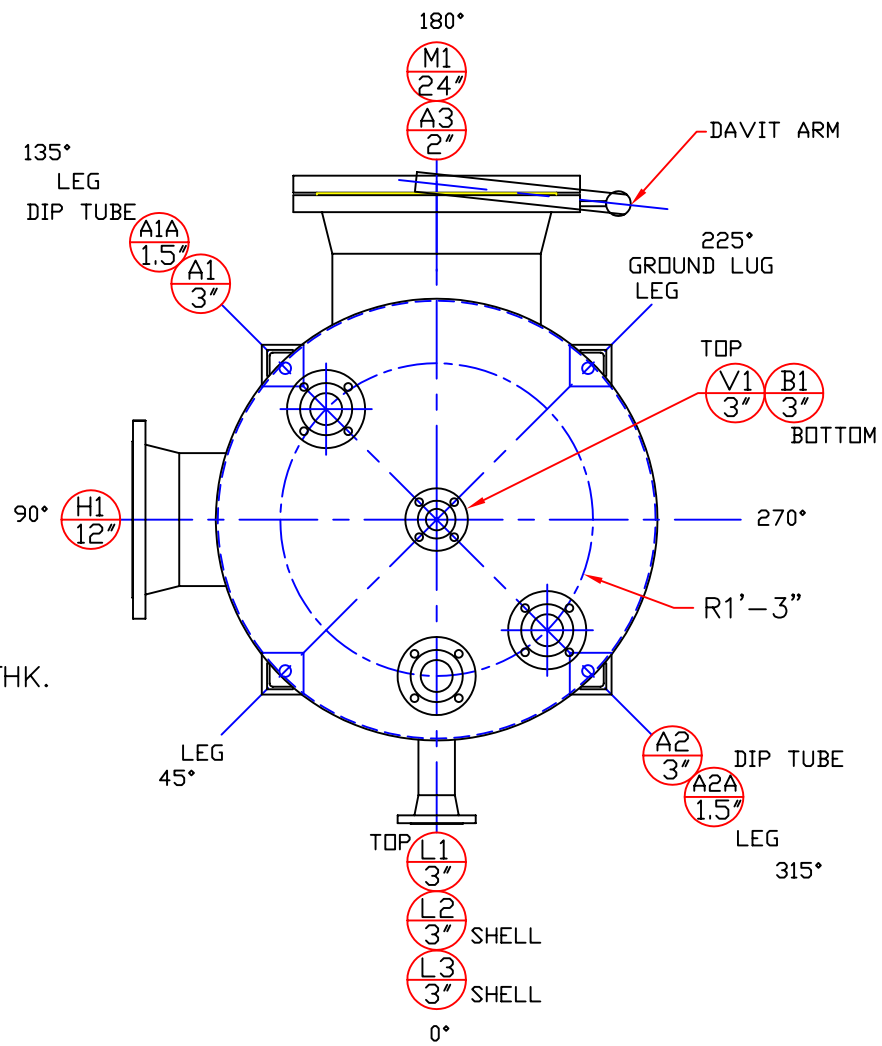
NOTES:

1. UNO. ALL WELDS TO BE 3/16" MIN.
2. REMOVE ALL WELDING SPATTER AND AND SHARP EDGES.

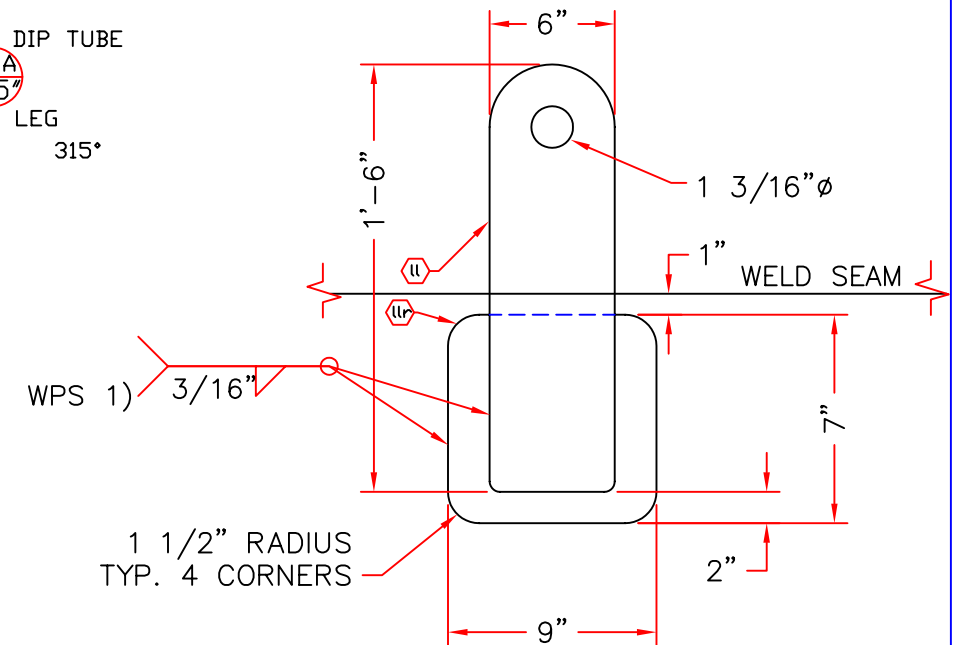


ELEVATION VIEW

NOZZLES ROTATED FOR CLARITY SEE PLAN VIEW FOR ORIENTATION

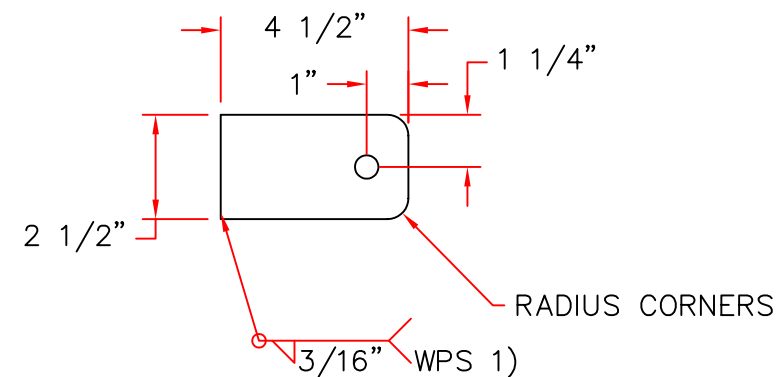


PLAN VIEW



LIFTING LUGS

(2) REQ'D



GROUND LUG

WELD TO LEG @ 225°



REV.	DESCRIPTION	DATE
A	FOR APPROVAL	1/23/2006
	DESCRIPTION	DATE
COASTAL INDUSTRIAL FABRICATIONS, INC. 8517 BELLINGRATH RD. THEODORE, AL 36582 PHONE(251)653-5315 FAX(251)653-4897		
DEGUSSA CORPORATION THEODORE, AL		
PROJECT NO: C0150.10002		POS. 3052 DISTILLATE RECEIVER GENERAL ARRANGEMENT
SCALE: N.T.S.	JOB NO. 05-036C	DWG. NO. 05-036B/C
P.O. NO. 4500154835		REV. A
		SHT. 2 OF 4