

VESSEL SPECIFICATION

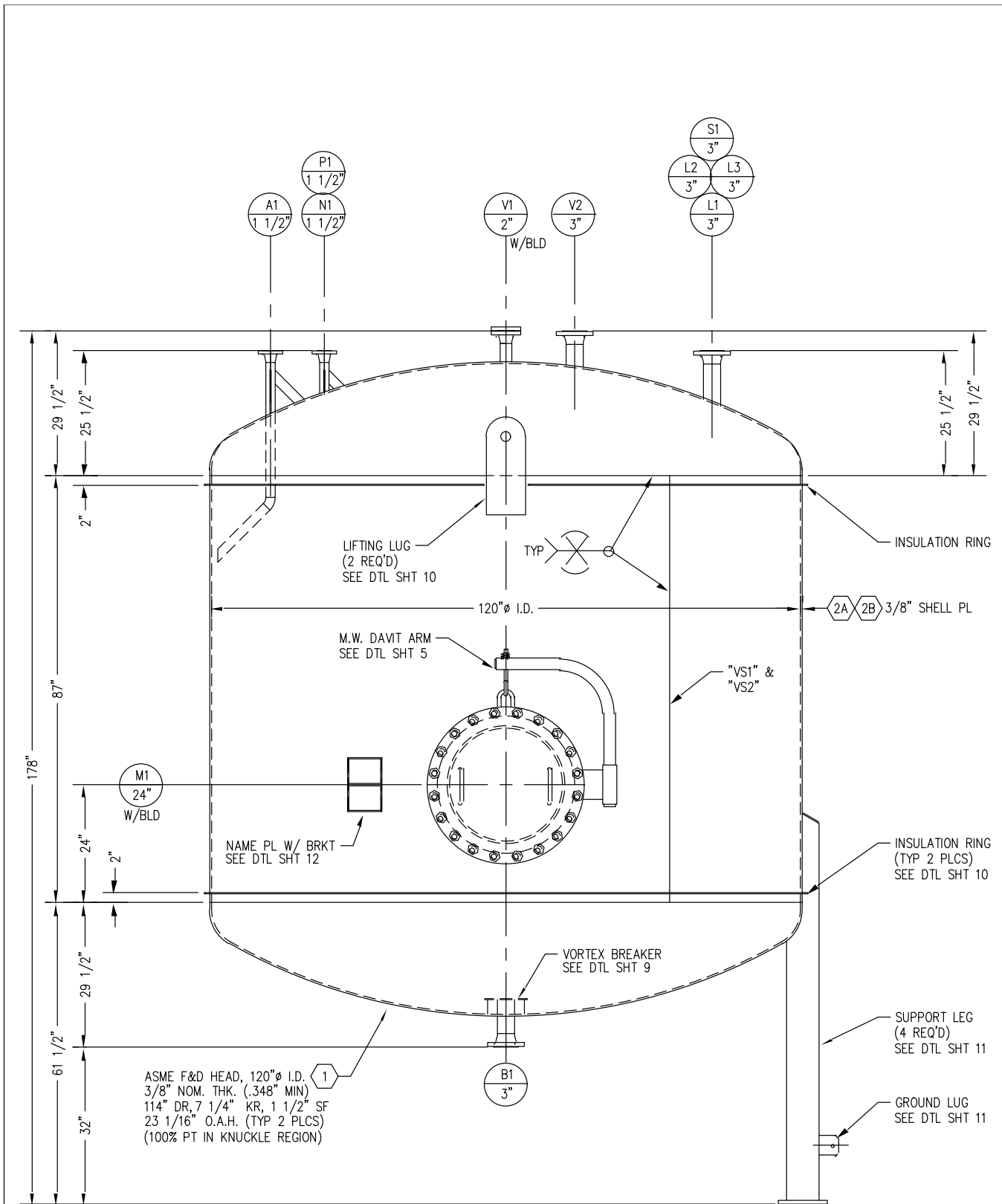
DESIGN CODE	ASME CODE SECTION VIII, DIVISION 1, 2004 EDITION, & 2005 ADDENDA		HOLD POINTS	FIT-UP		VESSEL MATERIALS	VESSEL		
				WELDING			HEADS	SA-240-316/316L D.C.	
				TESTING			SHELL	SA-240-316/316L D.C.	
CODE STAMP: "U" - LETHAL							PIPE	SA-312-316/316L D.C.	
INSP	CUSTOMER: DEGUSSA		OTHER: N/A		FLGS		SA-182F-316/316L		
	ASME: A.I.		S.S.F.I.: Q.C.I.		BOLTS		SA-193-B8M		
DESIGN CONDITION			VESSEL		NUTS		SA-194-B8M		
	P.S.I.G. INT.	45			GASKETS		GARLOCK 3500 OR GYLON TAN		
	P.S.I.G. EXT.	14.7			LIFT LUGS		SA-240-304/304L D.C.		
	DESIGN TEMP.	302°F			SUPT LEGS		SA-312-304/304L D.C. & SA-240-304/304L D.C.		
	M.D.M.T.	-20°F			INSUL RINGS	SA-479-304/304L D.C.			
	CORR. ALLOW.	0"			VORTEX BREAK	SA-240-316/316L D.C.			
	X-RAY	RT-1			REINF. PADS	SA-240-304/304L D.C.			
	JOINT EFF.	1.0			NAME PL	SA-240-304			
	TEST P.S.I.G.	58.5			OTHER MATERIALS AS NOTED				
	P.W.H.T.	N/A			CONTENTS CONTAMINATED WASTE WATER; ACETONE, HCN, & ACH				
TOLERANCES	OVERALL DIM.		±1/4"		VESSEL DATA	SPECIFIC GRAVITY		1.0	
	NOZ. PROJ. AND LOCATION.		±1/8"			CAPACITY		5670 GAL. NOM.	
	SUPT. AND LUG LOCATION		±1/4"			WT. EMPTY		11,037 LBS. APPROX.	
	FLG. FACE LEVEL.		±1/16" ACROSS FACE			WT. WITH CONTENTS		58,325 LBS. APPROX.	
	ORIENTATION		±1/8"			FLG. FACE FINISH		STANDARD STOCK	
	VESL. DIAM. (EXT. PRESS)		±.35" @ AN ARC LENGTH OF 26.88"			REMOVE ALL DIRT, OIL, WELD SPATTER, ETC. CHAMFER OR ROUND ALL EXPOSED INSIDE EDGES. PICKLE & PASSIVATE ALL STAINLESS STEEL SURFACES.			
VESL. DIAM. (INT. PRESS)		±1.2" @ ID							
WELDING	FULL PENETRATION AS NOTED PER S.S.F.I. WELD SPEC. NO.				SURFACE FINISH				
	GTAW-1,-8 FCAW-2,-4 GTFC-P8-P8								
REMARKS	COVER ALL OPENINGS PRIOR TO SHIPMENT				CUST. DATA	P.O. NO.		4500171781	
	ALL FLANGES TO BE PER ANSI B16.5 UNLESS NOTED.					EQUIP NO.		POS #3830	
	ALL WELDED FITTINGS TO BE PER ANSI B16 UNLESS NOTED					PROJ. NO.		C0150.10002	
	ALL THREADED FITTINGS TO BE PER ANSI B16 UNLESS NOTED.					PLANT		ACH PLANT - MOBILE	

NOZZLE SCHEDULE


MK	SIZE	TYPE	LOCATION	SERVICE
A1	1 1/2"	150# RFWN FLG W/ INTERNAL PROJ.	TOP HEAD	INLET
B1	3"	150# RFWN FLG	BTM. HEAD	OUTLET
L1	3"	150# RFWN FLG	TOP HEAD	LEVEL CONTROL
L2	3"	150# RFWN FLG	TOP HEAD	LEVEL SWITCH
L3	3"	150# RFWN FLG	TOP HEAD	LEVEL SWITCH
M1	24"	150# RFWN FLG W/ BLD	SIDE SHELL	MANWAY W/ DAVIT ARM
N1	1 1/2"	150# RFWN FLG	TOP HEAD	NITROGEN
P1	1 1/2"	150# RFWN FLG	TOP HEAD	PI
S1	3"	150# RFWN FLG W/ BLD	TOP HEAD	SPARE
V1	2"	150# RFWN FLG	TOP HEAD	NORMAL VENT
V2	3"	150# RFWN FLG	TOP HEAD	PRESSURE RELIEF
.
.
.
.
.
.
.
.
.
.
.
.
.

NOTES	1. ALL CATAGORY "A" & "B" BUTT JOINTS ARE TO BE RT-1.			
	2. ALL NOZZLE TO HEAD, SHELL, & NOZZLE PENETRATION WELDS ARE TO HAVE THE ROOT PASS AND COVER PASS 100% PT EXAMINED (SSFI PROCEDURE NO. PT-1).			
	3. AIR BLOWN OR SWABBED DRY PRIOR TO COVERING FOR SHIPMENT. (NO HEAT OR HOT AIR)			
	4. SHIP WITH HYDRO GASKETS IN PLACE. SHIP SERVICE GASKETS LOOSE.			

DRAWN BY Jimmy Eller		REVISION BLOCK			SOVEREIGN STAINLESS FABRICATORS, INC. P.O. BOX 5612 * 3114 RIVERSIDE DRIVE CHATTANOOGA, TN 37406-0612		ASME, API, UL-142
CERTIFIED CORRECT FINAL	J	5-18-06	REV. #	DATE	DESCRIPTION	 *TANKS *VESSELS *REACTORS *STAINLESS *ALLOYS *TITANIUM CUSTOMER DEGUSSA CORPORATION DRAWING TITLE PROCESS DRAIN TANK POS #3830 DATE SCALE DRAWING NO. ISSUE 4-21-06 NTS 6-106 SHT 1/12 1	
PROJECT ENGINEER APPROVED	B	5-18-06	1	5-18-06	REV. PER CUST APPROVAL		
ENGINEERING MANAGER APPROVED	B	5-18-06	.	.	.		
QUALITY CONTROL MANAGER APPROVED	B	5-18-06	.	.	.		



ELEVATION VIEW
 SEE PLAN VIEW FOR TRUE ORIENTATION

DRAWN BY: Jimmy Eller		REVISION BLOCK			SOVEREIGN STAINLESS FABRICATORS, INC. P.O. BOX 5612 * 3114 RIVERSIDE DRIVE CHATTANOOGA, TN 37406-0612	ASME, API, UL-142
CERTIFIED CORRECT FINAL	J E	5-18-06	REV. #	DATE	DESCRIPTION	 *TANKS *VESSELS *REACTORS *STAINLESS *ALLOYS *TITANIUM
PROJECT ENGINEER APPROVED	B E	5-18-06	1	5-18-06	REV. PER CUST. APPROVAL	
ENGINEERING MANAGER APPROVED	B E	5-18-06				
QUALITY CONTROL MANAGER APPROVED	B E	5-18-06				
					CUSTOMER DEGUSSA CORPORATION	
					DRAWING TITLE PROCESS DRAIN TANK POS #3830	
		DATE	SCALE	DRAWING NO.	ISSUE	
		4-21-06	NTS	6-106 SHT 2/12	1	