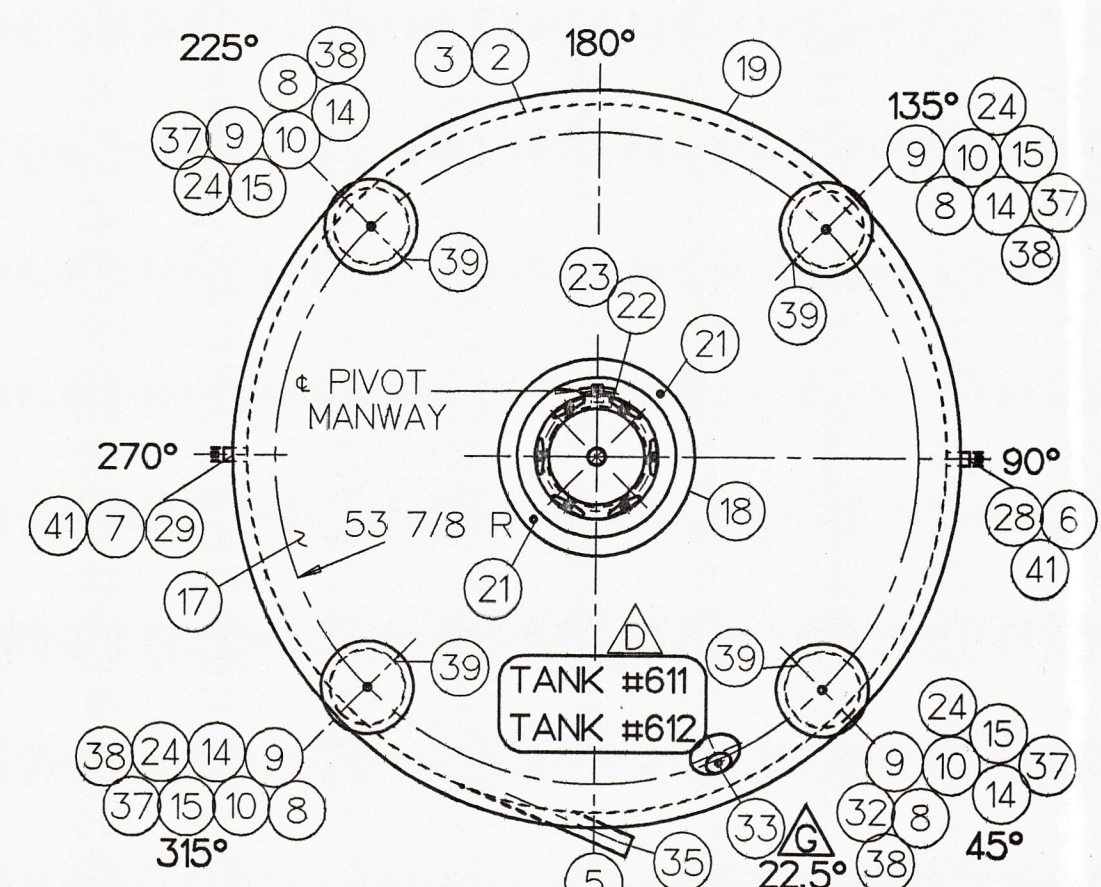
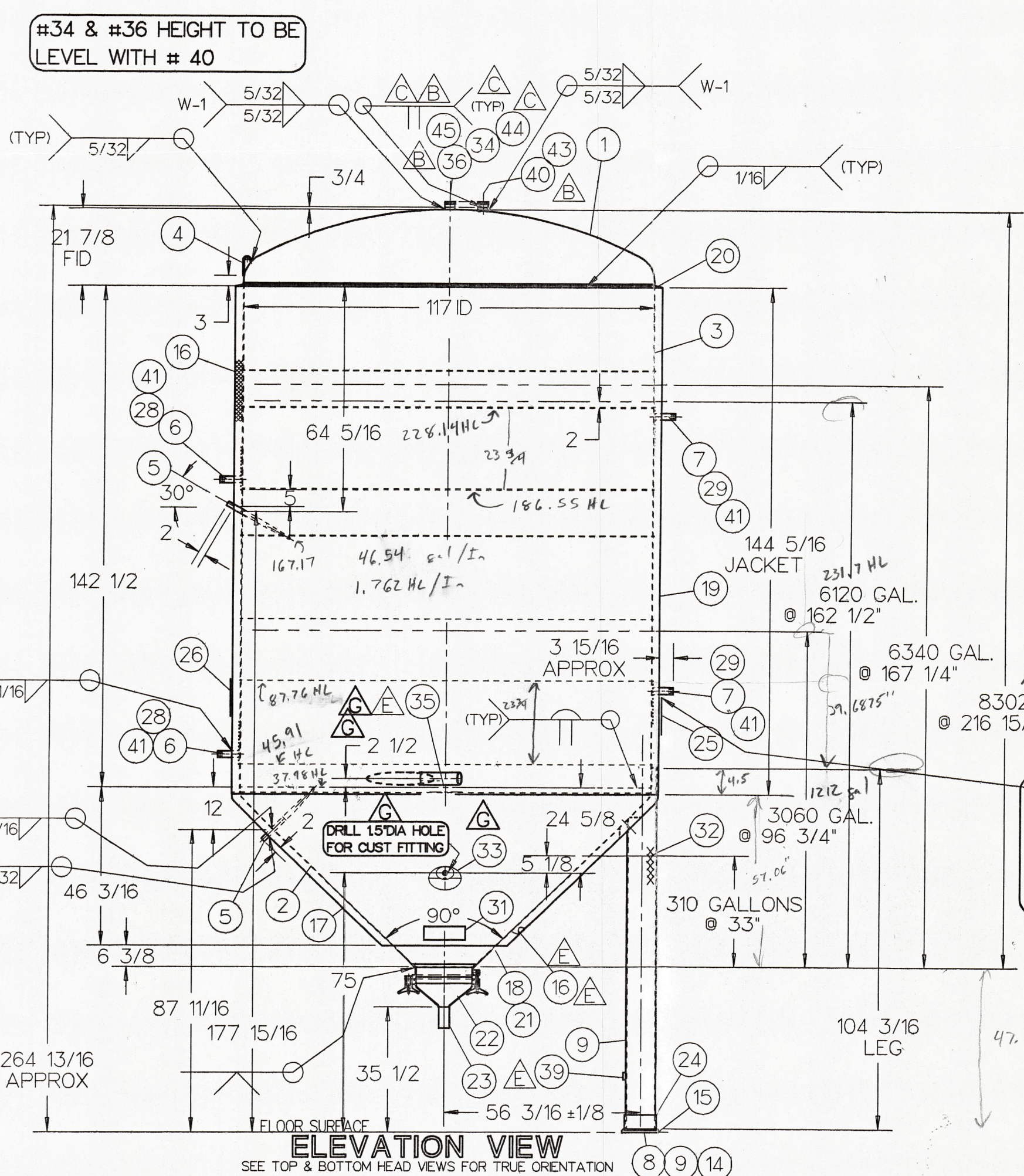


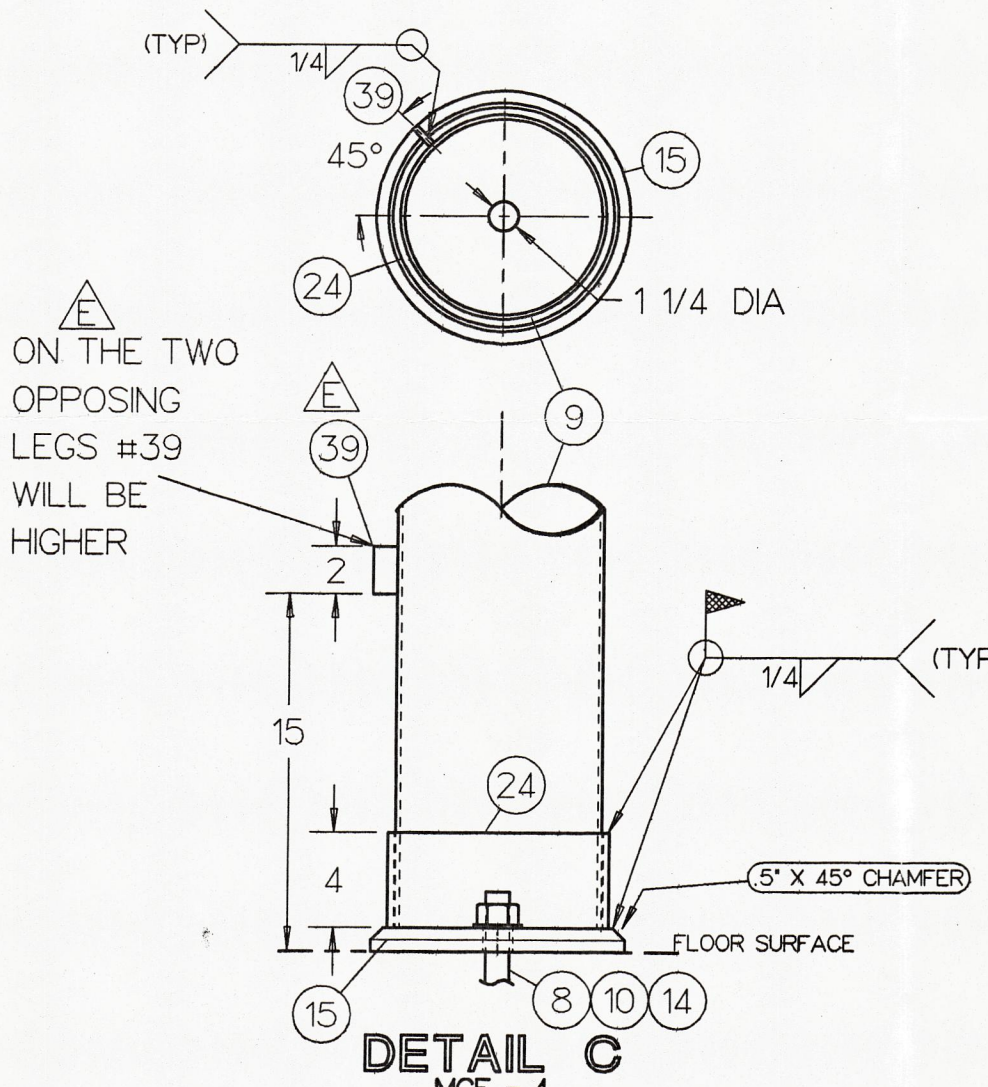
TOP HEAD AND SHELL ORIENTATION
TRUE ORIENTATION



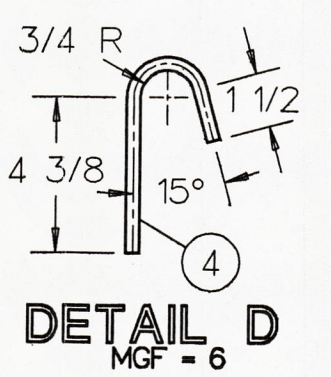
BOTTOM VIEW OF
BOTTOM HEAD ORIENTATION
TRUE ORIENTATION



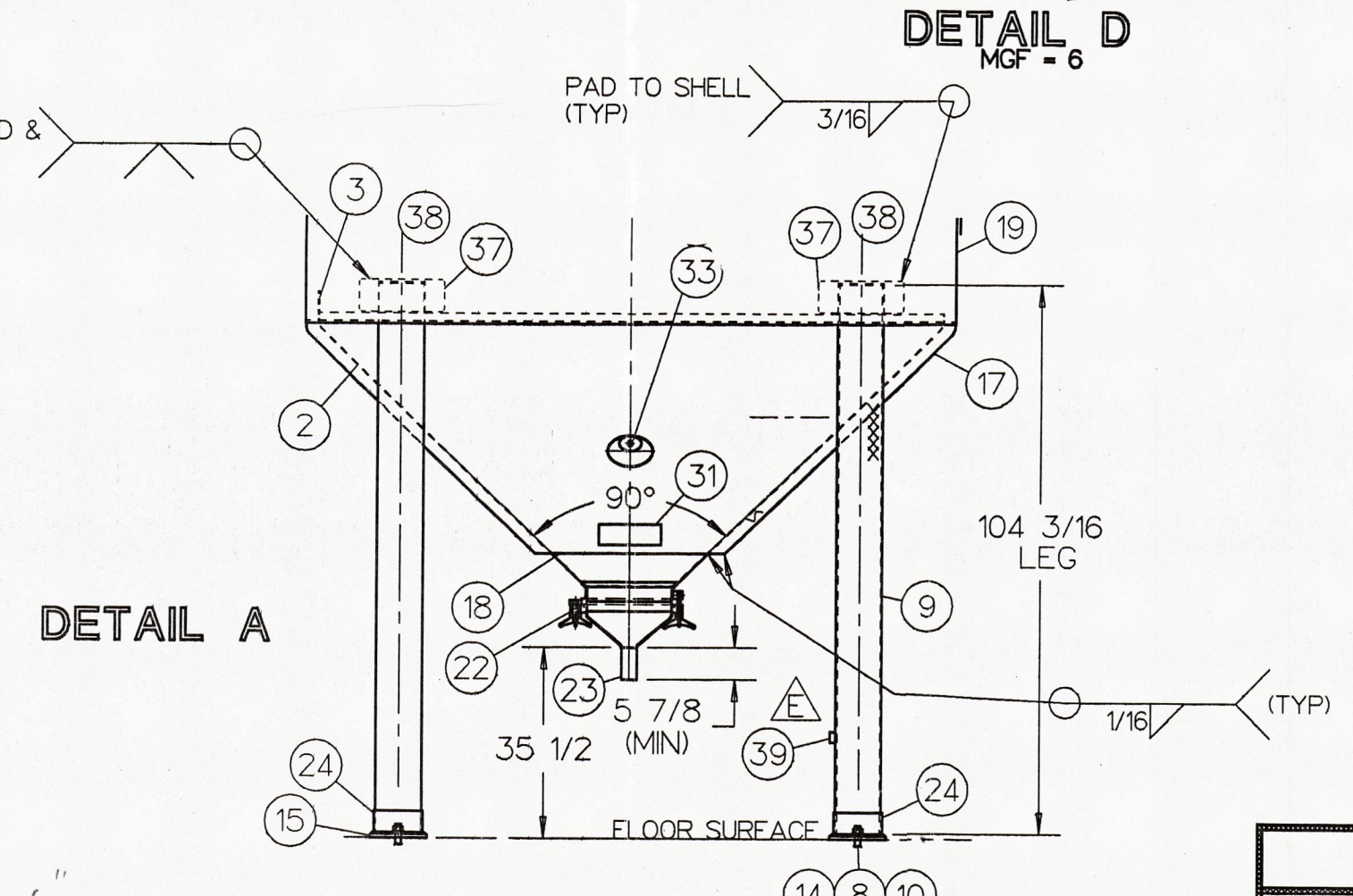
ELEVATION VIEW
SEE TOP & BOTTOM HEAD VIEWS FOR TRUE ORIENTATION



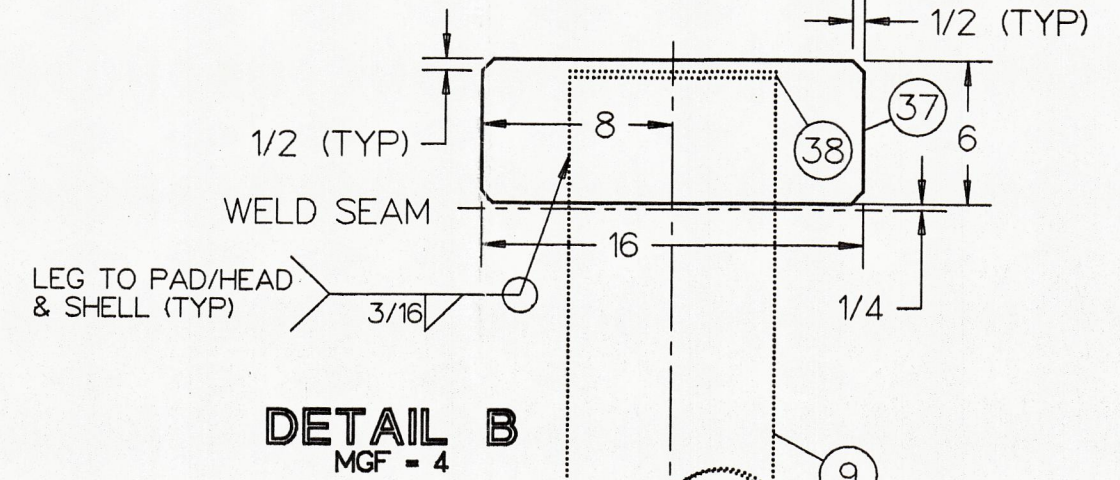
DETAIL C
MFG - 4



DETAIL D
MFG - 6



DETAIL A



DETAIL B
MFG - 4

CUST NO.	ITEM NO.	NO. REQ'D	PART NO.	DESCRIPTION	DRAWING NO.
	1			TANK ASSY 8,300 GAL MODEL 'F' BRIGHT BEER TANK	FP08789 D
	1	1	301	HEAD TOP 10GA 304 S/S ASME F&D 8"KR 1.5"SF (9827612)	
	2	1	302	HEAD BOT INNER 7GA 304 S/S 90° CONE 2"KR 1.5"SF (9827620)	
	3	1	303	SHELL ASSY 10GA 304 S/S W/20GA 304 S/S INFLATED TEMP-PL UPPER BAND AND 7GA 304 S/S W/18GA 304 S/S INFLATED TEMP-PL LOWER BAND	FP08790 D
	4	2	9824533	LUG LIFTING SGL WALL .375"PL X 2.25"W 304 S/S	DETAIL D
	5	2	9824639	WELL ASSY THERM .75"NPT 316L S/S SM 9902408 EXC #2 12.6875"LG & OA 20.625"LG	9902408 B
	6	2	(REF)	CONN TP-PL INLET 1.5" 304 S/S SCH 40 PIPE 6"LG TOE(9801781)	FP08790 D
	7	2	(REF)	CONN TP-PL OUTLET 1.5" 304 S/S SCH 40 PIPE 6"LG TOE(9801781)	FP08790 D
	8	4	CUST FURN	TIE DOWN BOLT 1-8NC (CUSTOMER SUPPLY/INSTALL)	
	9	4	309	LEG 8" 304 S/S SCH 40 PIPE	
	10	4	CUST FURN	WASHER FLAT 1" (CUSTOMER SUPPLY/INSTALL)	
	11			DELETE	
	12			DELETE	
	13			DELETE	
	14	4	CUST FURN	NUT HEAVY HEX 1-8NC (CUSTOMER SUPPLY/INSTALL)	
	15	4	315	BASE PLATE 1"THK 10.625"OD 1/1.25"ID 304/S/S	DETAIL C
	16	A/R	9902473	INSULATION 2" URETHANE 2' X 4' GROOVED	NOTE 18
	17	1	9827621	HEAD OUT BOT 12GA 304 S/S 90° CONE 2"KR 1"SF	
	18	1	9827636	RING ENCLOSURE .1875" NOM 304 S/S 35.8125"OD X 26.8125"ID	
	19	1	9827636	JACKET 12GA 304 S/S	
	20	1	9827637	BREAST RING 14GA 304 S/S	9000582 C
	21	2	9901490	VENT ASSY JACKET 1" DIA 304 S/S	9901490 A
	22	1	9822776	MANWAY ASSY 16" REDHOOK ALE STYLE 304 S/S 2B/2S BUFF WELDS	9500542 C
	23	1	125	TUBE 3"OD X .065"W 304 S/S POLISHED ID 6"LG (OUTLET)	
	24	4	324	LEG COLLAR 304 S/S .25"THK X 4"HIGH W 8.75"ID	
	25	1	3743	PLATE NAME PROCESS 2.175" X 9.5" 22GA 304 S/S	
	26	1	9803082	PLATE DATA MUELLER FOIL 3.75" X 5.25" X .003"THK W/PRESSURE	
	27	4	9808631	LABEL CAUTION USE BACKUP WRENCH 3" X 2" LABEL BLUE W/WHITE LETTERING	
	28	2	9901403	LABEL "IN" .5" X 1.5" SILVER W/BUE LETTERING POLY-STIK-S .005"THK	
	29	2	9901404	LABEL "OUT" .5" X 1.5" SILVER W/BUE LETTERING POLY-STIK-S .005"THK	
	30	1	9900380	ENVELOPE ASSY INSTRUCT SINGLE WALL TANK	
	31	1	9900362	PLATE CAUTION PRESSURE 'CAUTION: THIS VESSEL MUST BE PROPERLY PERMANENT STAMPED SERIAL NUMBER	
	32	1		RECESS COLLAR 14GA 304 S/S W/5"ID	9900064 A
	33	1	135	EXTENSION DN65 304 S/S 2.835"OD X 1.25"LG (TOP HEAD)	
	34	1	065W164563	PIPE STUB 3" SCH 10 304 S/S BEVEL END (TANGENTIAL)	
	35	1	137	EXTENSION DN65 304 S/S 2.835"OD X 1.25"LG (TOP HEAD)	
	36	1	065W164563	DOUBLER PLATE 7GA 304 S/S 6" X 16"	DETAIL B
	37	4	9827641	CAP LEG .25"THK 304 S/S 8.625"OD	
	38	4	9827642	LUG LEVELING .25"THK 304 S/S 1"W X 2"LG	
	39	4	140	EXTENSION DN50 304 S/S 2.170"OD X 1.25"LG (TOP HEAD)	
	40	1	050W164563	LABEL ATTENTION 'CUSTOMER' 1.75"X3.5"X.005"THK MYLAR W/3M#468	
	41	4	9824549	LEG HOLDING JIG FOR REDHOOK 8300GAL TANKS	FP07936 C
	42	1	9827643	FITTING METRIC 304 S/S (CUST SUPPLY DN50- TOP HEAD) 002W164563	
	43	1	002	FITTING METRIC 304 S/S (CUST SUPPLY DN65- TOP HEAD) 003W164563	
	44	1	003	FITTING METRIC 304 S/S (CUST SUPPLY DN65- TOP HEAD) 003W164563	
	45	1	003	FITTING METRIC 304 S/S (CUST SUPPLY DN65- TOP HEAD) 003W164563	

NOTES:

- ALL MATERIALS OR COMPONENT PARTS CALLED OUT ON THIS DRAWING SHALL BE AS SPECIFIED OR APPROVED EQUAL.
- DIMENSIONS UNLESS OTHERWISE INDICATED, ARE NOMINAL AND STANDARD SHOP TOLERANCES ARE TO BE EXPECTED. MEASUREMENTS FOR ANY FIELD ATTACHMENTS SHOULD BE VERIFIED ON SITE BY OTHERS BEFORE FABRICATION OF THE ATTACHMENTS. (ISO P. 23-7)
- F USED IN CONTACT WITH MATERIALS CONTAINING SALT OR OTHER CHLORIDES, THE CORROSION RESISTANCE OF THIS EQUIPMENT IS NOT THE RESPONSIBILITY OF THE PAUL MUELLER COMPANY WITHOUT WRITTEN ACCEPTANCE BASED ON A SPECIFIC SERVICE.
- ALL FLANGES WILL HAVE BOLT HOLES STRADDLE THE 0°-180° & 90°-270° CENTER LINES, UNLESS SPECIFIED OTHERWISE.
- VESSEL TO BE VENTED FOR SHIPMENT.
- ALL DIMENSIONS ARE IN INCHES UNLESS SPECIFIED OTHERWISE.
- ALL WELD SIZES ARE MINIMUM AFTER GRINDING.
- SUITABLE PRESSURE RELIEF VALVE MUST BE INSTALLED BY CUSTOMER FOR TEMP-PLATE OPERATION.
- SUITABLE PRESSURE AND/OR VACUUM RELIEF VALVE MUST BE INSTALLED BY CUSTOMER FOR VESSEL OPERATION.
- PRODUCT SPECIFIC GRAVITY: 1.0135-1.0560
- REMOVE HEAT TINT FROM VESSEL INTERIOR WITH SHEET POLISHER.
- VESSEL DESIGNED FOR SEISMIC ZONE #2A.
- ENTIRE CONE (ITEM #17), LEGS (ITEM #19), BASE PLATE (ITEM #15), COLLAR (ITEM #24), AND MANWAY ASSY (ITEM #22) ARE TO BE GLASS BEAD BLASTED (GB).
- THIS DRAWING REPLACES FP07974-D UNDER S/O 146937. VESSELS WILL BE BUILT PER FP08789-D.
- NO ESCUTCHEON PLATES ARE TO BE USED ON THESE TANKS.
- THESE TANKS ARE TO BE INSTALLED IN A NEW PLANT AND WILL BE THE 'SHOW PLACE'. PLEASE USE EXTRA CARE DURING PRODUCTION FOR TOP QUALITY RESULTS.
- ITEM 43, 44 & 45 ARE CUSTOMER SUPPLIED (METRIC SIZE 304 S/S) AND MAILED TO SALES FOR INSTALLATION BY PMCO.
- INSULATION (ITEM #16) IN BOTTOM CONE TO BE INSTALLED USING 'PIN' METHOD.
- CUSTOMER TANK NUMBERS (e.g. 1401) TO BE STAMPED ON SWIVEL SUPPORT OF THE MANWAY FOR ALL TANKS.
- ALL TEMP-PLATE INLET & OUTLET FITTINGS ARE TO BE CAPPED OFF PRIOR TO SHIPMENT.

MATERIAL FINISHES
INTERIOR #2B/ (NOTE #11) EXTERIOR #2B/ (NOTE #13)

WELD FINISHES
INTERIOR #4 EXTERIOR BUFF (BF) / (NOTE #13)

SPECIFICATIONS VESSEL

CODE NONE

RADIOGRAPHY

Top Head To Shell	Shell	Bottom Head To Shell	Bottom Head To Shell
NONE	NONE	NONE	NONE

HEAT TRANSFER

CODE NONE

RADIOGRAPHY

Top Head To Shell	Shell	Bottom Head To Shell	Bottom Head To Shell
NONE	NONE	NONE	NONE

SIZE (GALLONS) - MODEL
8,300 GALLON 'F'

SERIAL NUMBER
167598-3 to -4

DESIGN PRESSURE 15 PSI
DESIGN TEMP. 100 °F

HYDRO TEST PRESSURE 0 PSI
DESIGN VACUUM 4 WATER IN HG.

DESIGN PRESSURE 100 PSI
DESIGN TEMP. 100 °F

TEST PRESSURE 150 PSI
VOLUME .6448 CU. FT.

MEDIUM NONE / GLYCOL

EST. EMPTY WEIGHT - 8,680 LBS

SCALE 1/32" = 1" (DO NOT SCALE THIS DRAWING)

DRAWN BY Rush JOHNSON **DATE** 8-11-95
REVIEWED BY A.FOELL **DATE** 8-15-95

SOLD TO REDHOOK ALE BREWERY
ADDRESS PORTSMOUTH, NH
CUSTOMER ORDER NO. AL TRIPLETT

TITLE 8,300 GAL. MODEL 'F' BRIGHT BEER TANK

QUANTITY TWO

This drawing and any print thereof is the property of the PAUL MUELLER CO., Springfield, Mo., and is subject to return on request of this company. The information shown is confidential and the recipient by accepting this drawing agrees not to use any information contained thereon in any manner which will be detrimental to the PAUL MUELLER CO.

PAUL MUELLER COMPANY
P. O. BOX 628 / SPRINGFIELD, MISSOURI 65801-0628, U.S.A.

2 BREW

SALES ORDER & SERIAL NO. 167598-3 to -4 **DRAWING NO.** FP08789 D

CERTIFIED CORRECT AND RELEASED FOR FABRICATION

THIS DRAWING INCORPORATES CHANGES REQUESTED BY CUSTOMER APPROVAL RETURNED BY YOU DATED 8-11-95 FABRICATION WILL BE IN ACCORDANCE WITH THIS DRAWING

ANY FURTHER CHANGES WILL BE REVIEWED FOR COST AND DELIVERY ADJUSTMENTS.

PAUL MUELLER COMPANY

Signed _____ Date _____

REV	DESCRIPTION	DATE
G	#37, 30" WAS 28" ELEV VIEW #37. RELOCATE @ 2.5" DELETE 11/2 & 1 1/2" W/ #33	RJ 11-8-95
F	Per FAX did 10-27-95 SET #11-12-13-33 & 75 WAS 66" STILL ON HOLD. RELOCATE #11-12-13-33 @ 22.5" ADD NOTE TO TRIM/BEVEL TEMP-PL CONN @ ASSY UNLESS ELEV FOR #38	RJ 10-31-95
E	Per FAX did 10-23-95 RELIEF FIELD WELD SET @ 401 & 35 SET #11-12-13-33 @ 66" STILL ON HOLD. #35 NOW A TANG FITTING per DETAIL ON FAX did 10-23-95	RJ 10-23-95
D	Per FAX did 9-25-95 ADJUST BUBBLES #11 & #12 WERE 401402411 & #12 #1121333 & 35 ON HOLD.	RJ 9-27-95
C	Per CH #3, #34 & 36 DIMS WERE DN80 & DN100 #44 & 45 DIMS WERE DN80 & DN100	RJ 9-6-95
B	Per REV#S #34, 36 & 40 DN EXT WERE TUBE	RJ 9-1-95
A	Per AFLO. ADD 3 DIGIT PAN# SUBMIT HOLD NOTICE.	RJ 8-16-95
SYM	CHANGE	BY DATE