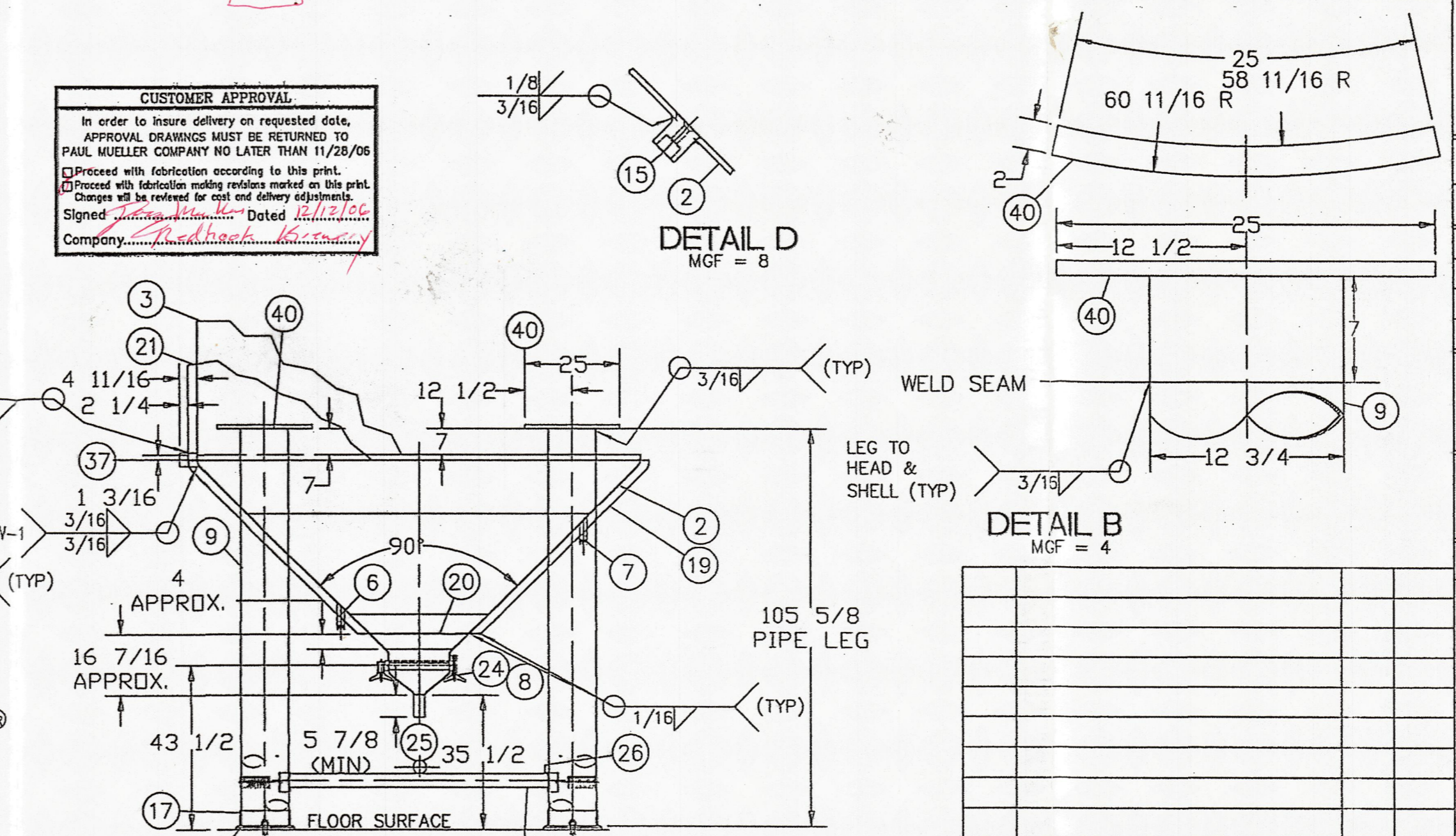


CUST. NO.	ITEM NO.	NO. REQ'D	PART NO.	DESCRIPTION	DRAWING NO.
	1	1	V02	TANK ASSY 16,600 GAL MODEL "F" FERMENTER	FP15364 D
	1	1	H02/101	HEAD TOP 10GA 304 S/S ASME F&D 8"KR 1"SF	
	2	1	H52W349403	HEAD ASSY BOT INNER 7GA 304 S/S 90° CONE 2"KR, 1.5"SF W/18GA 304 S/S INF. T-PL	FP15364 D
	3	1	S01/S02	SHELL ASSY 10GA 304 S/S W/20GA 304 S/S INFLATED TEMP-PL UPPER BANDS AND 7GA 304 S/S W/18GA 304 S/S INFLATED TEMP-PL LOWER BAND	FP14890 D
	4	2	9901259	LUG LIFTING ASSY SWW S/S .25 & .25"THK 304 MAT'L. 9000# CAPACITY	9000480 B
	5	4	9824639	WELL ASSY THERM .75"NPT 316L S/S OAL 20.625"	
	6	4	(REF)	CONN TP-PL INLET 1.5" 304 S/S SCH 40 PIPE 6"LG TOE(9801781)	FP15364 D
	7	4	(REF)	CONN TP-PL OUTLET 1.5" 304 S/S SCH 40 PIPE 6"LG TOE(9801781)	FP15364 D
	8	1	750P294433	MANWAY ASSY MC10 16"ID 304 S/S (REDHOOK STYLE)(REF. 750P294433)	
	9	4	109W349403	LEG 12" 304 S/S SCH 10 PIPE	9000263 B
	10	4	CUST FURN	TIE DOWN BOLT 1-8NC (CUSTOMER SUPPLIED/INSTALLED)	
	11	4	CUST FURN	WASHER FLAT 1" (CUSTOMER SUPPLIED/INSTALLED)	
	12	4	CUST FURN	NUT HEAVY HEX 1-8NC (CUSTOMER SUPPLIED/INSTALLED)	
	13	1	9803210	TRYCOCK PERLUCK .25" 316 S/S F-27805-SS	9900633 A
	14	1	9802383	GASKET FIBER PERLUCK F-11284-1	9900633 A
	15	1	9802384	ADAPTER WELD IN .25" 304 S/S	DETAIL D
SHIP LOOSE	16	4	116W164563	BASE PLATE 1"THK 15.5"OD W/1.25"ID 304 S/S	
SHIP LOOSE	17	4	117W164563	LEG COLLAR 304 S/S .25"THK X 4"HIGH W/12.875"ID	
	18	A/R	9902473	INSULATION 2" URETHANE 2' X 4' GROOVED	
	19	1	119W349403	HEAD OUT BOT 12GA 304 S/S 90° CONE 2"KR 1"SF	
	20	1	9827623	RING ENCLOSURE .1875" NOM 304 S/S 35.8125"OD X 26.8125"ID	
	21	2	921W294433	JACKET SECTIONS 12GA 304 S/S	
	22	1	9827637	BREAST RING 14GA 304 S/S	9000582 C
	23	2	9901490	VENT ASSY JACKET 1" DIA 304 S/S	9901490 A
	24	1	024W	EXTENSION (CUST FURN) DN80 304 S/S X 2" LG (TOP HEAD)	
	25	1	751P294433	TUBE 3"OD X .065"W 304 S/S POLISHED ID 6"LONG (OUTLET)	
	26	4	126W164563	LUG LEVELING .25"THK 304 S/S 1"W X 2"LG	
	27	1	3743	PLATE NAME PROCESS 2.175" X 9.5" 22GA 304 S/S	
	28	1	9803082	PLATE DATA MUELLER FOIL 3.75" X 5.25" X .003"THK W/PRESSURE	
	29	8	9808631	LABEL CAUTION USE BACKUP WRENCH 3" X 2" LABEL BLUE W/WHITE LETTERING	
	30	4	9901403	LABEL "IN" .5" X 1.5" SILVER W/BUE LETTERING POLY-STIK-S .005"THK	
	31	4	9901404	LABEL "OUT" .5" X 1.5" SILVER W/BUE LETTERING POLY-STIK-S .005"THK	
	32	1	9900380	ENVELOPE ASSY INSTRUCTION SINGLE WALL TANK	
	33	1	9900362	PLATE WARNING "PRESSURE" 316 /316L S/S 3.5"X2"X 16GA THK	
	34	1		PERMANENT STAMPED SERIAL NUMBER	
	35	1	9827639	RECESS COLLAR 7GA 304 S/S W/3"ID	9900064 A
	36				
	37	1	137W164563	PIPE STUB 3"SCH 10 304 S/S BEVEL END	
	38	1	038W	EXTENSION (CUST FURN) DN100 304 S/S 4.179"OD X 2" LG (TOP HEAD)	
	39				
	40	4	140W164563	CAP LEG SUPPORT 1"THK X 2" X 25"LG 304 S/S	DETAIL B
	41				
	42				
	43	8	9824549	LABEL ATTENTION "CUSTOMER" 1.75"X3.5"X.005"THK MYLAR W/3M#468	
	44	1	153W164563	LEG HOLDING JIG FOR REDHOOK 16,600 GAL TANKS	FP08723 C
	45	A/R		FITTING METRIC 304 S/S (CUSTOMER SUPPLIED DN100-TOP HEAD)	
	46	A/R	9808680	INSULATION 2"THK ALUMINA SILICA 6# DENSITY THERMAL CERAMIC FIBER	
	47	8	147W	LEG REINFORCEMENT 1" THK X 2.5" X 56.875" INS RAD 304L S/S	
	48	8	148W	LEG REINFORCEMENT 1" THK X 2.5" X 55.1875" INS RAD 304L S/S	FP08723 C
	49	8	149W	LEG REINFORCEMENT 1" THK X 2.5" X 51" INS RAD 304L S/S	
	50	8	150W	LEG REINFORCEMENT 1" THK X 2.5" X 46.75" INS RAD 304L S/S	



NOTES:

- ALL MATERIALS OR COMPONENT PARTS CALLED OUT ON THIS DRAWING SHALL BE AS SPECIFIED "OR APPROVED EQUAL."
- DIMENSIONS, UNLESS OTHERWISE INDICATED, ARE NOMINAL AND STANDARD SHOP TOLERANCES ARE TO BE EXPECTED. (ENF 222) MEASUREMENTS FOR ANY FIELD ATTACHMENTS SHOULD BE VERIFIED ON SITE BY OTHERS BEFORE FABRICATION OF THE ATTACHMENTS.
- CORROSION DISCLAIMER:** PAUL MUELLER COMPANY IS NOT RESPONSIBLE FOR CORROSION OR SUITABILITY FOR USE OF ANY MATERIAL IN ANY PARTICULAR APPLICATION. THE CORROSION RESISTANCE AND SUITABILITY FOR USE OF A MATERIAL IS DEPENDENT ON OPERATING ENVIRONMENT AND CONDITIONS, CLEANING PRACTICES, AND MANY OTHER FACTORS BEYOND THE CONTROL OF THE EQUIPMENT FABRICATOR. THE USER OF THE EQUIPMENT BEARS TOTAL RESPONSIBILITY FOR CORROSION OR SUITABILITY FOR USE OF ALL MATERIALS IN THEIR PARTICULAR APPLICATION.
- ALL FLANGES WILL HAVE BOLT HOLES STRADDLE THE 0°-180° & 90°-270° CENTER LINES, UNLESS SPECIFIED OTHERWISE.
- VESSEL TO BE VENTED FOR SHIPMENT.
- ALL WELD SIZES ARE IN INCHES UNLESS SPECIFIED OTHERWISE.
- SUITABLE PRESSURE RELIEF VALVE MUST BE INSTALLED BY CUSTOMER FOR TEMP-PLATE OPERATION.
- SUITABLE PRESSURE AND/OR VACUUM RELIEF VALVE MUST BE INSTALLED BY CUSTOMER FOR VESSEL OPERATION.
- PRODUCT SPECIFIC GRAVITY: 1.0135-1.0560
- REMOVE HEAT TINT FROM VESSEL INTERIOR WITH SHEET POLISHER.
- VESSEL DESIGNED FOR SEISMIC ZONE: #2A
- ENTIRE CONE (ITEM #19), LEGS (ITEM #9), FOOT ASSY (ITEM #17), FOOT PADS (ITEM #16), AND MANWAY ASSY (ITEM #24) ARE TO BE GLASS BEAD BLASTED (GB).
- NO ESCUTCHEON PLATES ARE TO BE USED ON THESE TANKS.
- THESE TANKS ARE LOCATED IN A SHOW AREA. PLEASE USE EXTRA CARE DURING PRODUCTION FOR TOP QUALITY RESULTS.
- ITEM #2 TO BE ASSY FITTING FOR #36 & #38. CUSTOMER SUPPLIED (METRIC SIZE 304 S/S AND MAILED TO SALES FOR INSTALLATION BY PMCO).
- STAMP TANK NUMBER AT HINGE POINT ON MANWAY.
- ITEMS #16 & #17 SHALL BE SHIPPED LOOSE.
- URETHANE INSULATION TO BE PLACED ON JACKET. INSWOOL INSULATION TO BE PLACED ON BOTTOM CONE.
- BOTTOM HEAD AND LEGS TO BE INSTALLED TO BOTTOM HALF OF TANK PRIOR TO SHELL TO SHELL WELDING.

MATERIAL FINISHES

INTERIOR	2B/NOTE #11	EXTERIOR	2B/NOTE #13
----------	-------------	----------	-------------

WELD FINISHES

INTERIOR	FINE GRIND #4
EXTERIOR	BUFF (BF)/NOTE #13

SPECIFICATIONS

VESSEL

CODE: NONE

RADIOGRAPHY

Top Head	Top Head To Shell	Shell	Bottom Head	Bottom Head To Shell

HEAT TRANSFER

CODE: NONE

RADIOGRAPHY

Top Head	Top Head To Shell	Shell	Bottom Head	Bottom Head To Shell

SIZE (GALLONS) - MODEL

16600 GAL F

SERIAL NUMBER

361707 3-4

DESIGN PRESSURE 15 PSI

DESIGN TEMP. 100 °F

HYDRO TEST PRESSURE 0 PSI

DESIGN VACUUM .1445 PSI

DESIGN PRESSURE 100 PSI

HEAT TRANSFER INFORMATION

DESIGN TEMP. 100 °F

TEST PRESSURE 130 PSI

VOLUME _____ CU. FT.

MEDIUM NONE / GLYCOL

EST. EMPTY WEIGHT = 13200 LBS

SCALE 1"=32" (DO NOT SCALE THIS DRAWING)

DRAWN BY L. GARTON

DATE 11/17/06

REVIEWED BY _____

DATE 11-17-06

APPROVED BY _____

DATE _____

SOLD TO REDHOOK BREWERY

ADDRESS PORTSMOUTH, NH

CUSTOMER ORDER NO. 36605

TITLE 16,600 GAL MODEL "F" CONE BOTTOM FERMENTER

QUANTITY (2) TWO

This drawing and any print thereof is the property of the PAUL MUELLER CO., Springfield, Mo., and is subject to return on request of this company. The information shown is confidential and the recipient by accepting this drawing agrees not to use any information contained thereon in any manner which will be detrimental to the PAUL MUELLER CO.

MUELLER

P. O. BOX 828 / SPRINGFIELD, MISSOURI 65801-0828, U.S.A.

SALES ORDER & SERIAL NO. 361707 3-4

DRAWING NO. FP15364