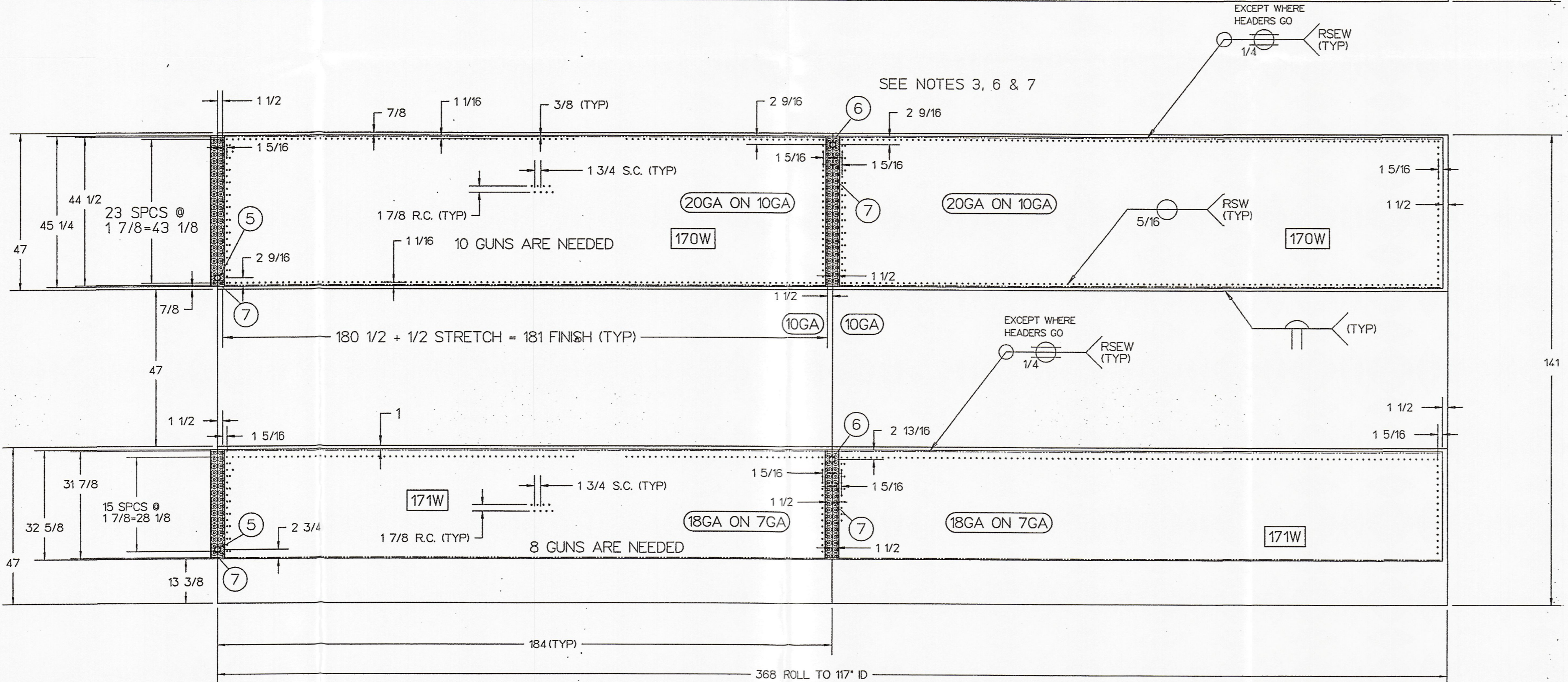
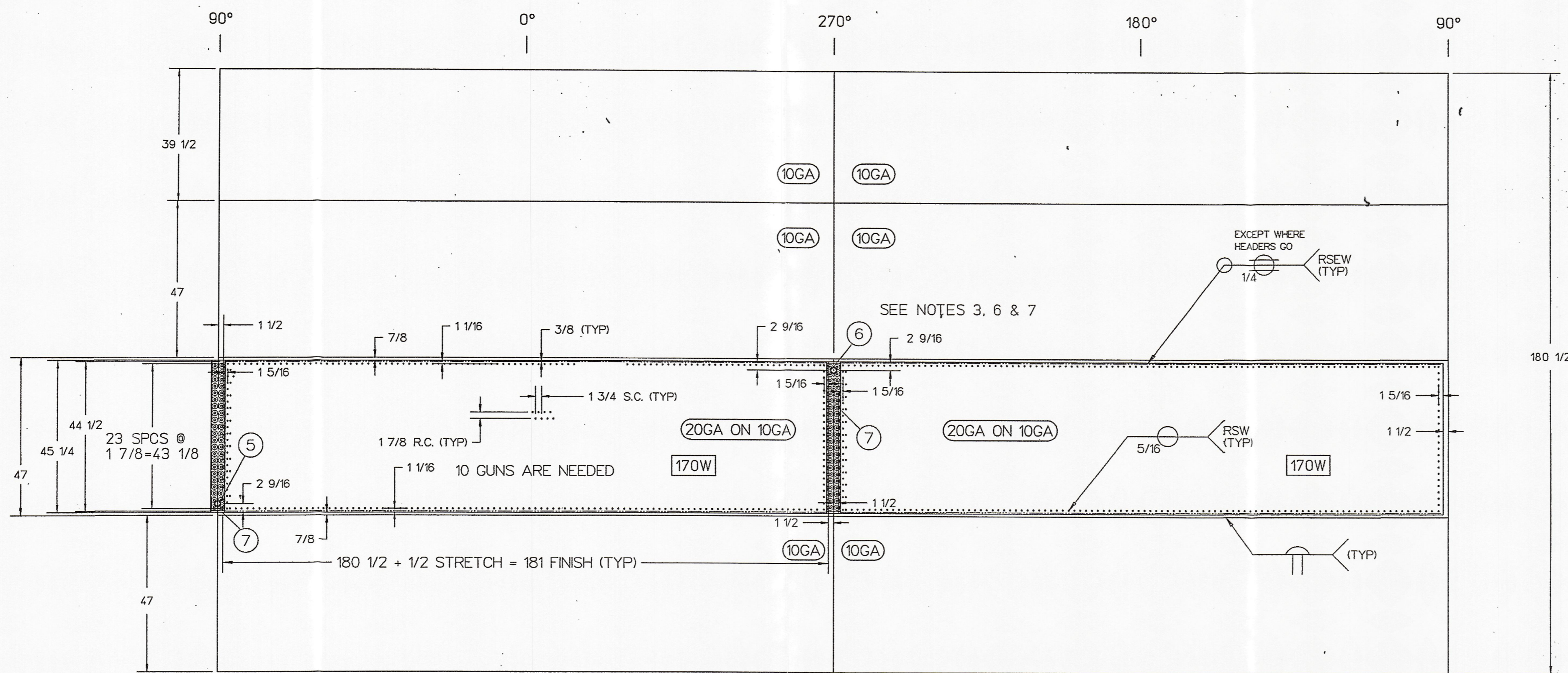


CUST. NO.	ITEM NO.	NO. REQ'D	PART NO.	DESCRIPTION	DRAWING NO.
	1			SHELL ASSY 10GA 304 S/S W/20GA INFLATED TEMP-PLATE UPPER BANDS	FP14890 D
	1	4		AND 7GA 304 S/S W/18GA INFLATED TEMP-PLATE LOWER BAND	
	2			SHELL BAND 10GA 304 S/S W/20GA INFLATED TEMP-PLATE 47" WIDE	
	3			SHELL BAND 7GA 304 S/S W/18GA INFLATED TEMP-PLATE 47" WIDE	
	4	1		SHELL 117" ID X 180.5" LG 10GA W/ 20GA T/P 304 S/S UPPER SECTION	
	4	1		SHELL 117" ID X 141" LG 10/7GA W/ 20/18GA T/P 304 S/S LOWER SECTION	
	5	3	9801781	NIPPLE 304 S/S 1.5" NPT X 6" LG SCH 40 TOE (INLET)	
	6	3	9801781	NIPPLE 304 S/S 1.5" NPT X 6" LG SCH 40 TOE (OUTLET)	
	7	6	9900872	HEADER DIMPLED DBL FLOW 14GA 304 S/S	9900872 B



- NOTES-**
- ALL DIMENSIONS ARE IN INCHES UNLESS SPECIFIED OTHERWISE.
 - MAX HYDROSTATIC INFLATION PSI 18/7 GA - 997. 20/10 GA - 520.
 - INSTALL FITTINGS PER 9000728C DET B.
 - SUITABLE PRESSURE RELIEF VALVE MUST BE INSTALLED BY CUSTOMER FOR HEAT TRANSFER OPERATION.
 - TEMP-PLATE SURFACE(S) TO BE POLISHED IN SHEET POLISHER TO REMOVE HEAT TINT.
 - RESISTANCE SPOTS ADJACENT TO HEADERS ARE TO BE IN A STRAIGHT LINE AS SHOWN.
 - INFLATE THRU HEADERS?
YES- FOR 20GA ON 10GA.
NO-- FOR 18GA ON 7GA.
 - FOR DYE TEST REQUIREMENTS SEE PROCEDURE 103.

CERTIFIED CORRECT AND RELEASED FOR FABRICATION

FABRICATION WILL BE IN ACCORDANCE WITH THIS DRAWING. ANY FURTHER CHANGES WILL BE REVIEWED FOR COST AND DELIVERY ADJUSTMENTS.

PAUL MUELLER COMPANY

TEST PLATE NO:	MS-332(20/10), MA-735A(18/7)
TEMP-PLATE TYPE:	<input checked="" type="checkbox"/> INFL. <input type="checkbox"/> DIMPLED <input type="checkbox"/> DIEFORMED
ROW AND SPOT SPACINGS ON INFLATED TYPE CANNOT EXCEED 1/8" MORE THAN DIMENSIONS SHOWN ON THIS DRAWING FOR ASME EQUIPMENT. (REF. SECT. VIII, DIV. 1, APX. 17.)	
MACHINE NO'S: SPOT WELDS	SEAM WELDS
PROTECTIVE PAINT:	
SURFACES TO BE PAINTED:	
TRIM EDGES:	<input type="checkbox"/> ENDS ONLY <input type="checkbox"/> ALL EDGES
MATERIAL FINISHES	WELD FINISHES
INTERIOR	2B FINE GRIND #4
EXTERIOR	2B AS IS (AI)
<input type="checkbox"/> ASME 'U' STAMPED <input type="checkbox"/> ASME DESIGNED (No Stamp)	<input checked="" type="checkbox"/> NON ASME <input type="checkbox"/> ASME MATERIAL & WELDING (No Stamp)
SPECIFICATIONS	TOP HEAD SHELL BTM HEAD
DESIGN PRESSURE PSI	100
DESIGN TEMP. ° F	100
MAX. HYDROSTATIC INFLATION PSI	NOTE 2
HYDROSTATIC TEST PSI	130
MAX. PNEUMATIC INFLATION PSI	---
PNEUMATIC TEST PSI	---
FILLOW DEPTH INCHES	.100
HEATING MEDIUM	NONE
COOLING MEDIUM	GLYCOL
DEHYDRATION (per S.O.P. 23-6)	NO
TEMP-PLATE CONTACT AREA (SF.)	301.04
TEMP-PLATE VOLUME CU.FT.	1.80
QUANTITY:	ONE (1) PER ASSEMBLY

ALL MATERIALS OR COMPONENT PARTS CALLED OUT ON THIS DRAWING SHALL BE AS SPECIFIED OR APPROVED EQUAL.			
DRAWN BY D. POWELL DATE 03/22/06 REVIEWED BY J. MINOR DATE 03/22/06	SALES ORDER/MODEL(S) 349403 -1-4 SCALE 1/16" = 1" SIZE 16,600 GAL	THIS DRAWING AND ANY PRINT THEREOF IS THE PROPERTY OF THE PAUL MUELLER CO., SPRINGFIELD, MO., AND IS SUBJECT TO RETURN ON REQUEST OF THIS COMPANY. THE INFORMATION SHOWN IS CONFIDENTIAL AND THE RECIPIENT BY ACCEPTING THIS DRAWING AGREES NOT TO USE ANY INFORMATION CONTAINED THEREIN IN ANY MANNER WHICH WILL BE DETRIMENTAL TO THE PAUL MUELLER CO.	MUELLER P. O. BOX 828 / SPRINGFIELD, MISSOURI 65801-0828, U.S.A.
TITLE INNER SHELL AND TEMP-PLATE ASSEMBLY		DRAWING NO. FP14890 D	

SEPIA FROM DWG. NO. FP13087

