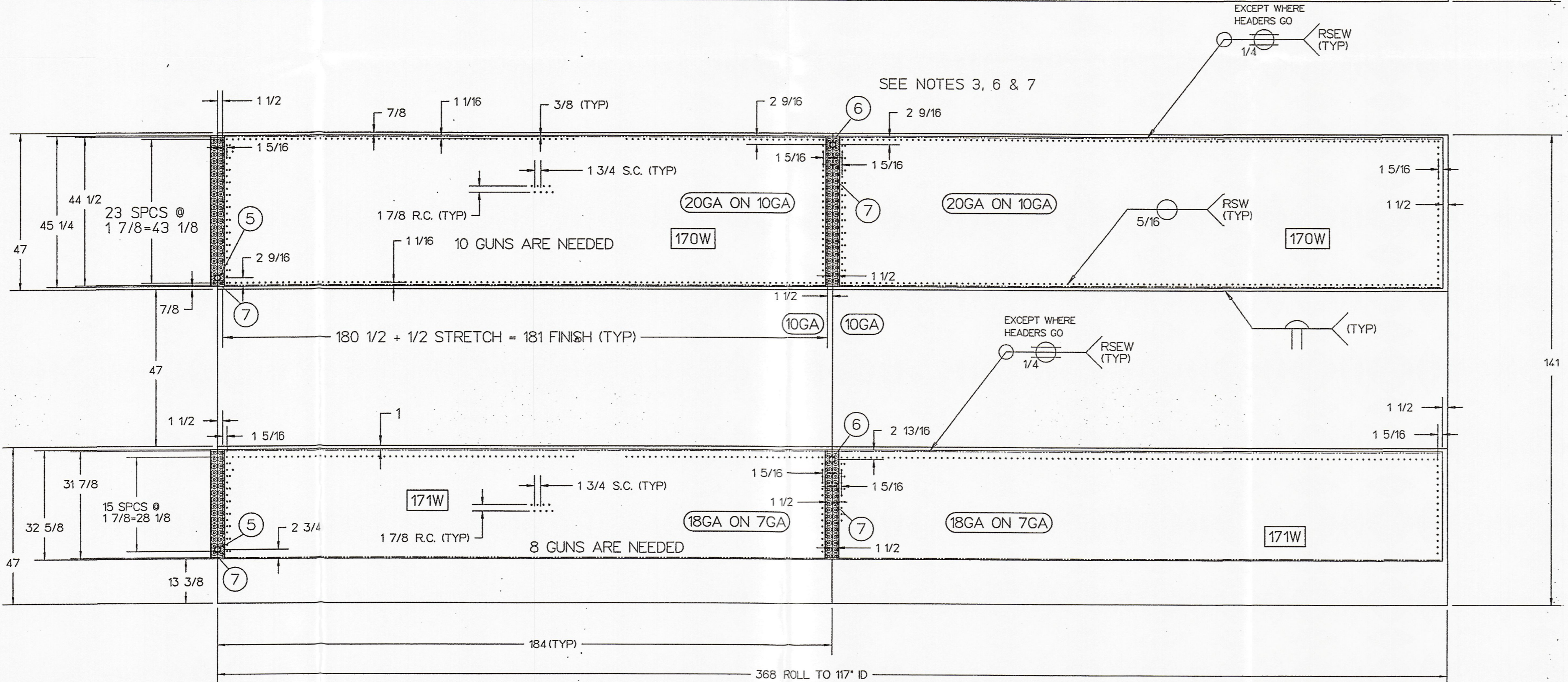
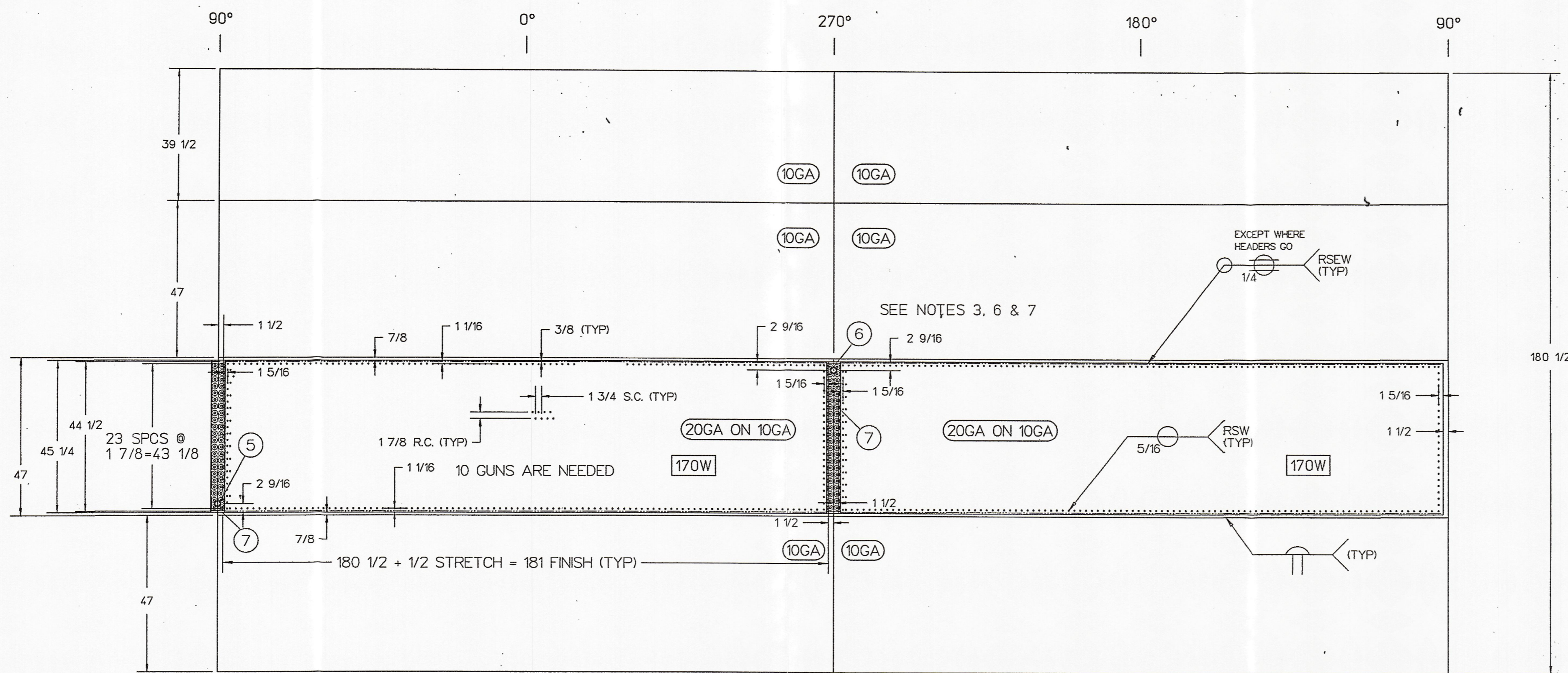


CUST. NO.	ITEM NO.	NO. REQ'D	PART NO.	DESCRIPTION	DRAWING NO.
	1	1		SHELL ASSY 10GA 304 S/S W/20GA INFLATED TEMP-PLATE UPPER BANDS	FP14890 D
				AND 7GA 304 S/S W/18GA INFLATED TEMP-PLATE LOWER BAND	
	1	4		SHELL BAND 10GA 304 S/S W/20GA INFLATED TEMP-PLATE 47" WIDE	
	2	2		SHELL BAND 7GA 304 S/S W/18GA INFLATED TEMP-PLATE 47" WIDE	
	3	1		SHELL 117" ID X 180.5" LG 10GA W/ 20GA T/P 304 S/S UPPER SECTION	
	4	1		SHELL 117" ID X 141" LG 10/7GA W/ 20/18GA T/P 304 S/S LOWER SECTION	
	5	3	9801781	NIPPLE 304 S/S 1.5" NPT X 6" LG SCH 40 TOE (INLET)	
	6	3	9801781	NIPPLE 304 S/S 1.5" NPT X 6" LG SCH 40 TOE (OUTLET)	
	7	6	9900872	HEADER DIMPLED DBL FLOW 14GA 304 S/S	9900872 B



- NOTES-**
- ALL DIMENSIONS ARE IN INCHES UNLESS SPECIFIED OTHERWISE.
  - MAX HYDROSTATIC INFLATION PSI 18/7 GA - 997. 20/10 GA - 520.
  - INSTALL FITTINGS PER 9000728C DET B.
  - SUITABLE PRESSURE RELIEF VALVE MUST BE INSTALLED BY CUSTOMER FOR HEAT TRANSFER OPERATION.
  - TEMP-PLATE SURFACES TO BE POLISHED IN SHEET POLISHER TO REMOVE HEAT TINT.
  - RESISTANCE SPOTS ADJACENT TO HEADERS ARE TO BE IN A STRAIGHT LINE AS SHOWN.
  - INFLATE THRU HEADERS?  
YES- FOR 20GA ON 10GA.  
NO-- FOR 18GA ON 7GA.
  - FOR DYE TEST REQUIREMENTS SEE PROCEDURE 103.

**CERTIFIED CORRECT AND RELEASED FOR FABRICATION**

FABRICATION WILL BE IN ACCORDANCE WITH THIS DRAWING. ANY FURTHER CHANGES WILL BE REVIEWED FOR COST AND DELIVERY ADJUSTMENTS.

PAUL MUELLER COMPANY

TEST PLATE NO:	MS-332(20/10), MA-735A(18/7)
TEMP-PLATE TYPE:	<input checked="" type="checkbox"/> INFL. <input type="checkbox"/> DIMPLED <input type="checkbox"/> DIEFORMED
ROW AND SPOT SPACINGS ON INFLATED TYPE CANNOT EXCEED 1/8" MORE THAN DIMENSIONS SHOWN ON THIS DRAWING FOR ASME EQUIPMENT. (REF. SECT. VIII, DIV. 1, APX. 17.)	
MACHINE NO'S: SPOT WELDS	SEAM WELDS
PROTECTIVE PAINT:	
SURFACES TO BE PAINTED:	
TRIM EDGES:	<input type="checkbox"/> ENDS ONLY <input type="checkbox"/> ALL EDGES
MATERIAL FINISHES	WELD FINISHES
INTERIOR	2B FINE GRIND #4
EXTERIOR	2B AS IS (AI)
<input type="checkbox"/> ASME 'U' STAMPED <input type="checkbox"/> ASME DESIGNED (No Stamp)	<input checked="" type="checkbox"/> NON ASME <input type="checkbox"/> ASME MATERIAL & WELDING (No Stamp)
SPECIFICATIONS	TOP HEAD SHELL BTM HEAD
DESIGN PRESSURE PSI	100
DESIGN TEMP. °F	100
MAX. HYDROSTATIC INFLATION PSI	NOTE 2
HYDROSTATIC TEST PSI	130
MAX. PNEUMATIC INFLATION PSI	---
PNEUMATIC TEST PSI	---
FILLOW DEPTH INCHES	.100
HEATING MEDIUM	NONE
COOLING MEDIUM	GLYCOL
DEHYDRATION (per S.O.P. 23-6)	NO
TEMP-PLATE CONTACT AREA (SF.)	301.04
TEMP-PLATE VOLUME CU.FT.	1.80
QUANTITY:	ONE (1) PER ASSEMBLY

ALL MATERIALS OR COMPONENT PARTS CALLED OUT ON THIS DRAWING SHALL BE AS SPECIFIED OR APPROVED EQUAL.			
DRAWN BY D. POWELL DATE 03/22/06 REVIEWED BY J. MINOR DATE 03/22/06	SALES ORDER MODEL(S) 349403 -1-4 SCALE 1/16" = 1" SIZE 16,600 GAL	<b>MUELLER</b> P. O. BOX 828 / SPRINGFIELD, MISSOURI 65801-0828, U.S.A.	
TITLE INNER SHELL AND TEMP-PLATE ASSEMBLY		DRAWING NO. FP14890 D	

SEPIA FROM DWG. NO.  
FP13087

SYMBOL	CHANGE	BY	DATE
A	CHANGED WELD FINISH TYPES*	TDM	05/19/06
	REVISIONS		

