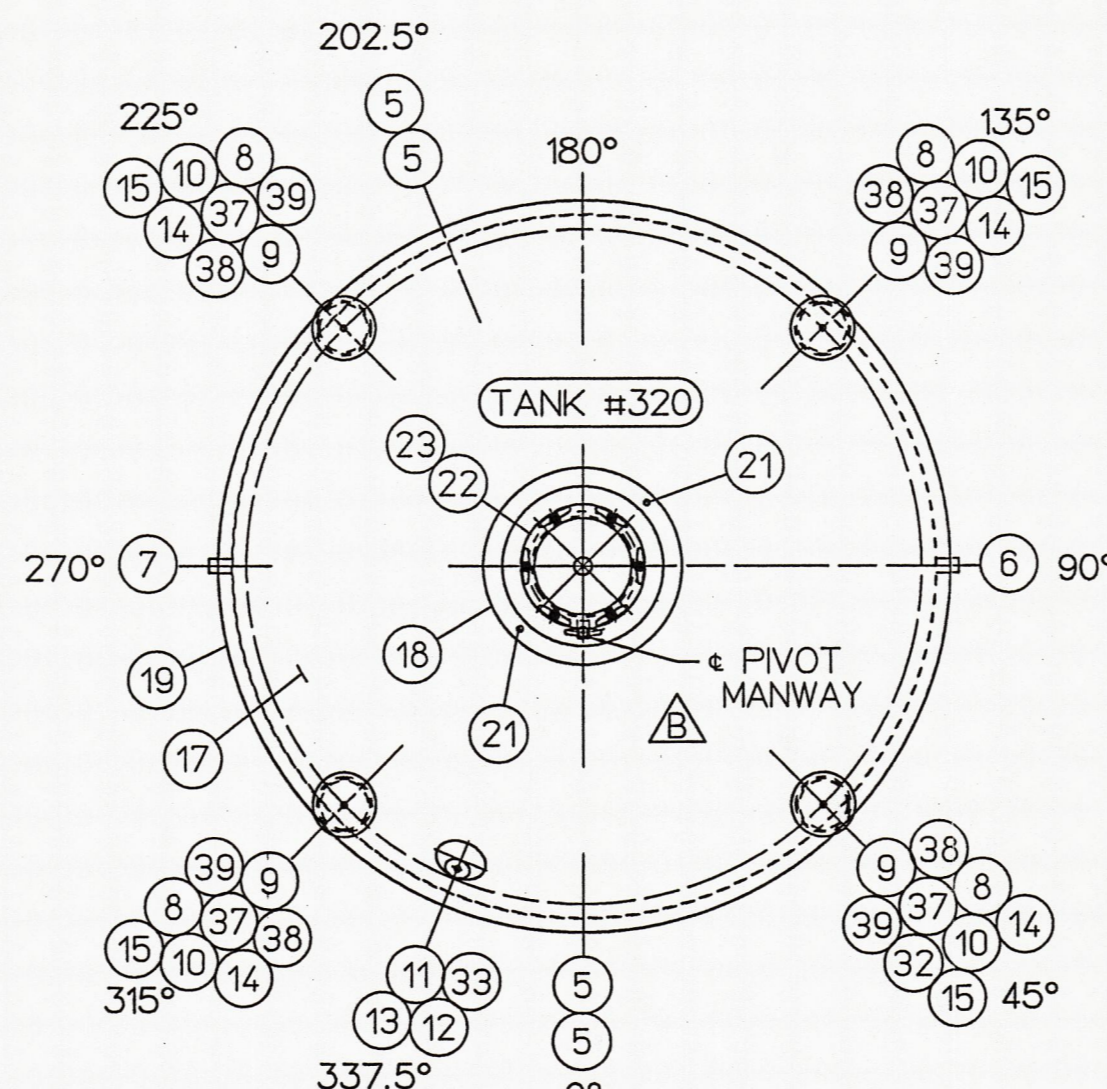
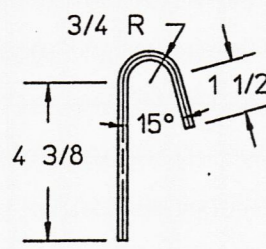


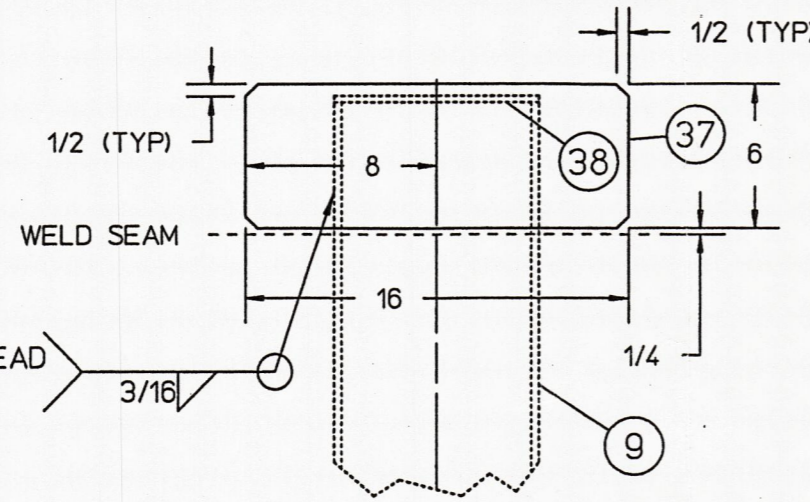
TOP HEAD AND SHELL ORIENTATION
TRUE ORIENTATION



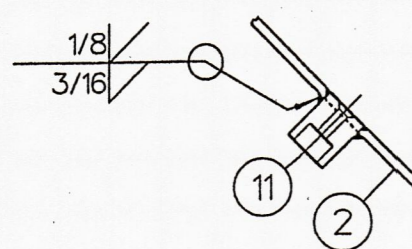
BOTTOM VIEW OF
BOTTOM HEAD ORIENTATION
TRUE ORIENTATION



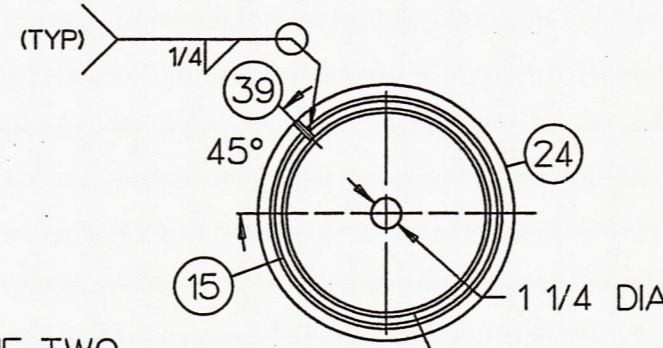
DETAIL D
MGF = 6



DETAIL B
MGF = 4

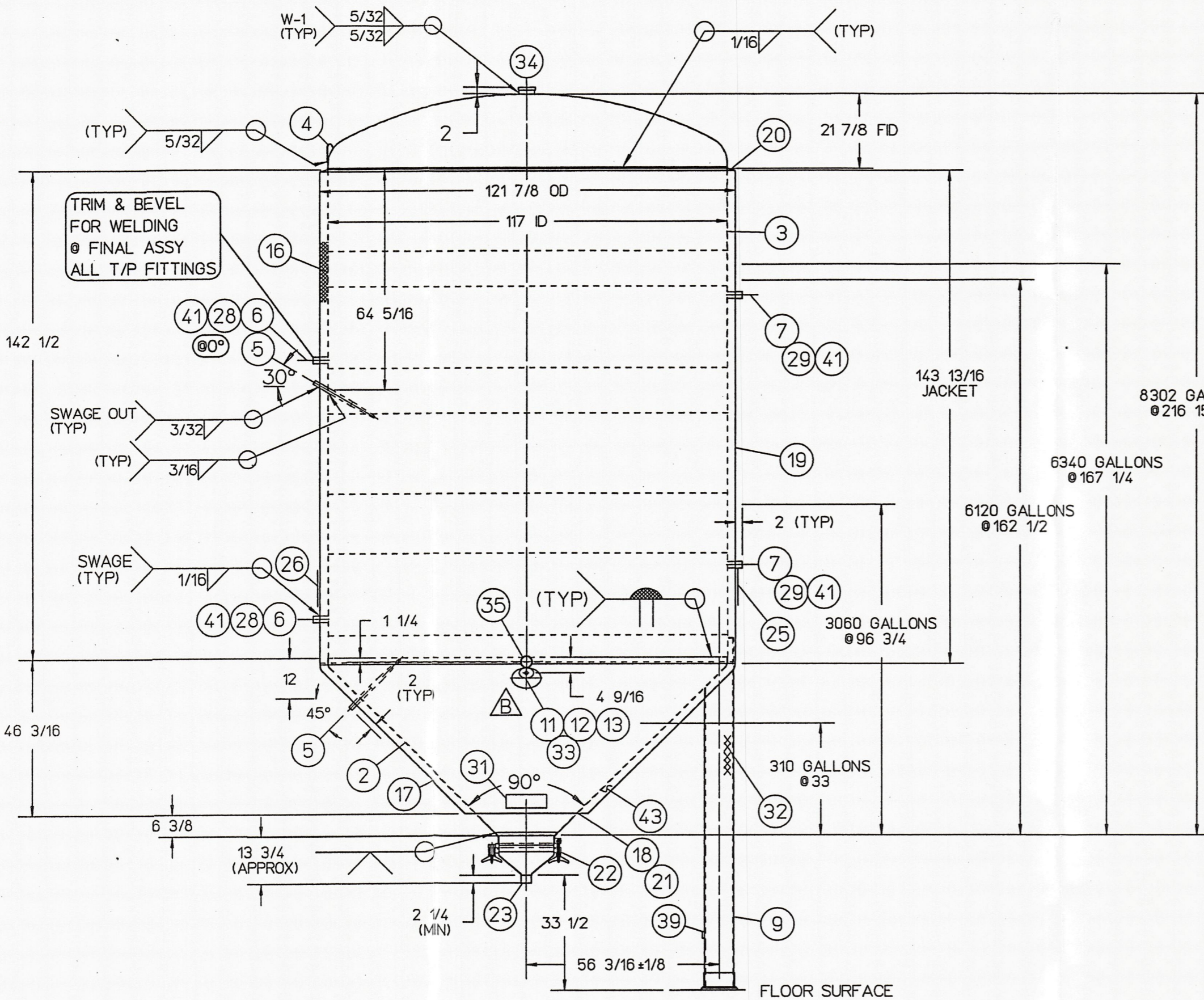


DETAIL E
MGF = 8

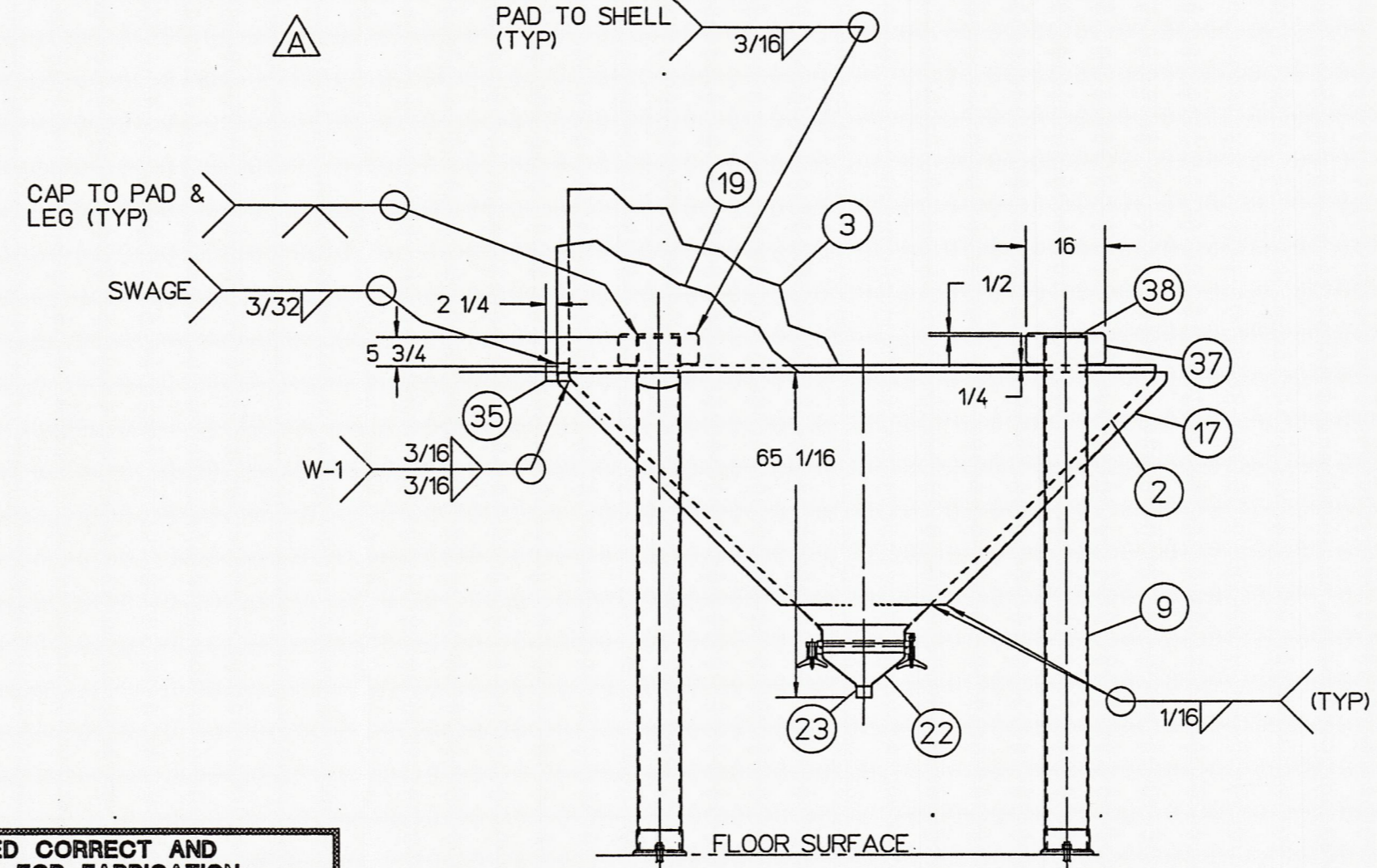


DETAIL C
MGF = 4

ON THE TWO
OPPOSING
LEGS #39
WILL BE
HIGHER



ELEVATION VIEW
SEE TOP & BOTTOM HEAD VIEWS FOR TRUE ORIENTATION



DETAIL A

**CERTIFIED CORRECT AND
RELEASED FOR FABRICATION**

FABRICATION WILL BE IN ACCORDANCE WITH
THIS DRAWING. ANY FURTHER CHANGES WILL
BE REVIEWED FOR COST AND DELIVERY
ADJUSTMENTS.

PAUL MUELLER COMPANY

CUST NO.	ITEM NO.	NO. REQ'D	PART NO.	DESCRIPTION	DRAWING NO.
	1	1	100	8,300 GAL MODEL 'F' CONE BOTTOM FERMENTER	FP13064 D
	1	1	H07	HEAD TOP ASME F&D 10GA 304S/S 8" KR 1.5" SF 117" ID	
	2	1	C20	HEAD BOTTOM CONE 117" ID 7GA 304 S/S 2"KR 1.5"SF 90DEG INCL	FP13088 D
	3	1	103	SHELL ASSY 10GA 304 S/S W/20GA 304 S/S INFLATED TEMP-PL UPPER BAND AND 7GA 304 S/S W/18GA 304 S/S INFLATED TEMP-PL LOWER BAND	FP13088 D
	4	2	9824533	LUG LIFTING SGL WALL .375"THK 304 S/S 2B FINISH	9000476 B
	5	2	9824639	WELL ASSY THERM .75"NPT 316L S/S OAL 20 5/8"	
	6	2	(REF)	CONN TP-PL (INLET) 304 S/S 1.5" SCH 40 BEVELED FOR WELDING	FP13088 D
	7	2	(REF)	CONN TP-PL (OUTLET) 304 S/S 1.5" SCH 40 BEVELED FOR WELDING	FP13088 D
	8	4	CUST FURN	TIE DOWN BOLT 1-8NC (CUSTOMER FURNISH / INSTALL)	
	9	4	709	LEG ASSY PIPE 8" SCH 40 304 S/S GLASSEAD BLAST	
	10	4	CUST FURN	WASHER FLAT 1" (CUSTOMER SUPPLY / INSTALL)	
	11	1	9803210	TRYCOCK PERLICK .25" 3/16 S/F-27805-SS, GOOD FOR 30 PSI	9900633 B
	12	1	9802383	GASKET FIBER PERLICK F-11284-1	9900633 B
	13	1	9802384	ADAPTER WELD IN .25" 304 S/S FOR PERLICK PETCOCK 1.25"LG	
	14	4	CUST FURN	NUT HEAVY HEX 1-8NC (CUSTOMER FURNISH / INSTALL)	
	15	4	324W167598	LEG COLLAR 304 S/S .25" THICK X 4" TALL X 8.75" ID	
	16	A/R	9902473	INSULATION 2"URETHANE GRVD 24"X48"	
	17	1	C17	HEAD BOTTOM OUTER CONE 12 GA 121.7813" OD 304 S/S 90DEG 2B/2B	
	18	1	9827623	RING ENCLOSURE .1874" 304 S/S 2B/2S	
	19	1	119	JACKET ASSY 12 GA 304 S/S 121.9375" OD X 145" LONG	
	20	1	9827637	RING BREAST 2" 117.3" ID 14GA 304 S/S 2B/2S	
	21	2	9901490	VENT ASSY JACKET 1" DIA. 304 S/S	9901490 A
	22	1	750P294433	MANWAY ASSY MC10 16" ID 304S/S MATERIAL 2B/2S WELDS #4 I.D./ BUFF O.D.	9500542 D
	23	1	751P294433	TUBE OUTLET 3" OD X .065" WALL 304 S/S	
	24	4	315W167598	BASE PLATE 1" THICK X 10.625" OD X 1.125" ID 304 S/S	
	25	1	3743	PLATE NAME 'MUELLER' 304 S/S 9.5"X2.175"X22GA THK W/3M#468 ADHESIVE	
	26	1	9803082	PLATE DATA 'MUELLER' 5.25"X3.75"X.003"THK FOIL W/3M#468 ADH	
	27				
	28	2	9901403	LABEL "IN" 1.5"X.5"X.005"THK MYLAR W/3M#468 ADH	
	29	2	9901404	LABEL "OUT" 1.5"X.5"X.005"THK MYLAR W/3M#468 ADH	
	30	1	9900380	ENVELOPE ASSY INSTRUCTION SINGLE WALL TANK	
	31	1	9900362	PLATE WARNING "PRESSURE" 316 /316L S/S 3.5"X2"X 16GA THK	
	32	1		PERMANENT STAMPED SERIAL NUMBER	
	33	1	9827639	RECESS COLLAR 7 GA 304L S/S	
	34	1	010W164563	FITTING DN100 MALE 304 S/S 2.125"LG FOR 4" TUBE (CUST FURN)	
	35	1	9827640	STUB PIPE 3" SCH 10 304 S/S 6.5"LG	
	36	1			
	37	4	9827641	DOUBLER PLATE 7 GA 304	
	38	4	9827642	LEG CAP .25" 304 S/S ASSY TO MAKE PATTERN	
	39	4	739	LUG LEVELING .25" X 1" X 2" LONG 304 S/S	9000000 C
	40				
	41	4	9824549	LABEL ATTENTION "CUSTOMER" 3.5"X1.75"X.005"THK MYLAR W/3M#468 ADH	
	42	1	9827643	LEG HOLDING JIG NON-RETURN- ABLE FOR REDHOOK 8300GAL TANKS	FP07936 C
	43	148 SF	9808680	INSULATION 2"THK ALUMINA SILICA 6# DENSITY THERMAL CERAMIC FIBER	

NOTES CONT:

- ALL TEMP-PLATE INLET & OUTLET FITTINGS ARE TO BE CAPPED OFF PRIOR TO SHIPMENT.
- FOR DYE TEST REQUIREMENTS SEE PROCEDURE ENG 103.
- URETHANE INSULATION TO BE PLACED ON SIDEWALL. INSWOOL INSULATION TO BE PLACED ON BOTTOM CONE.

NOTES:

- ALL MATERIALS OR COMPONENT PARTS CALLED OUT ON THIS DRAWING SHALL BE AS SPECIFIED "OR APPROVED EQUAL".
- DIMENSIONS UNLESS OTHERWISE INDICATED, ARE NOMINAL AND STANDARD SHOP TOLERANCES ARE TO BE EXPECTED. (ENPE 222) MEASUREMENTS FOR ANY FIELD ATTACHMENTS SHOULD BE VERIFIED ON SITE BY OTHERS BEFORE FABRICATION OF THE ATTACHMENTS.
- CORROSION DISCLAIMER**
PAUL MUELLER COMPANY IS NOT RESPONSIBLE FOR CORROSION OR SUITABILITY FOR USE OF ANY MATERIAL IN ANY PARTICULAR APPLICATION. THE CORROSION RESISTANCE AND SUITABILITY FOR USE OF A MATERIAL IS DEPENDENT ON OPERATING ENVIRONMENT AND CONDITIONS, CLEANING PRACTICES, AND MANY OTHER FACTORS BEYOND THE CONTROL OF THE EQUIPMENT FABRICATOR. THE USER OF THE EQUIPMENT BEARS TOTAL RESPONSIBILITY FOR CORROSION OR SUITABILITY FOR USE OF ALL MATERIALS IN THEIR PARTICULAR APPLICATION.
- ALL FLANGES WILL HAVE BOLT HOLES STRADDLE THE 0°-180° & 90°-270° CENTER LINES UNLESS SPECIFIED OTHERWISE.
- VESSEL TO BE VENTED FOR SHIPMENT.
- ALL DIMENSIONS ARE IN INCHES UNLESS SPECIFIED OTHERWISE.
- ALL WELD SIZES ARE MINIMUM AFTER GRINDING.
- SUITABLE PRESSURE RELIEF VALVE MUST BE INSTALLED BY CUSTOMER FOR TEMP-PLATE OPERATION.
- SUITABLE PRESSURE AND/OR VACUUM RELIEF VALVE MUST BE INSTALLED BY CUSTOMER FOR VESSEL OPERATION.
- PRODUCT SPECIFIC GRAVITY: 1.035-1.060
- REMOVE HEAT TINT FROM VESSEL INTERIOR WITH SHEET POLISHER.
- VESSEL DESIGNED FOR SEISMIC ZONE: 2A.
- ENTIRE CONE (ITEM #17), LEGS (ITEM #9), FOOT ASSY (ITEM #10), BRACES (ITEMS #14 & #15), FOOT PADS (ITEM #8), AND MANWAY ASSY (ITEM #22) ARE TO BE GLASS BEAD BLASTED (GB).
- CUSTOMER TO PROVIDE SUFFICIENT PIPE SUPPORT & PIPING EXPANSION JOINT TO PREVENT EXTERNAL NOZZLE LOADS.
- NO ESCUTCHEON PLATES ARE TO BE USED ON THESE TANKS.
- THIS TANK IS TO BE INSTALLED IN A "SHOW PLACE" FACILITY. PLEASE USE EXTRA CARE DURING PRODUCTION FOR TOP QUALITY RESULTS.
- MANWAY HINGE (PIVOT) POINT IS TO BE LOCATED ON THE 0°-180° AXIS AS SHOWN.
- INSULATION (ITEM #16) IN BOTTOM CONE TO BE INSTALLED USING "PIN" METHOD.
- CUSTOMER TANK NUMBER TO BE STAMPED ON SWIVEL SUPPORT OF THE MANWAY.

MATERIAL FINISHES

INTERIOR #2B/ (NOTE #11) EXTERIOR #2B/ (NOTE #13)

WELD FINISHES

INTERIOR FINE GRIND #4
EXTERIOR BUFF (BF)/ (NOTE #13)

SPECIFICATIONS VESSEL

CODE NONE

RADIOGRAPHY

Top Head To Shell Shell Bottom Head To Shell

HEAT TRANSFER

CODE NONE

RADIOGRAPHY

Top Head To Shell Shell Bottom Head To Shell

SIZE (GALLONS) - MODEL	SERIAL NUMBER
8300 GAL "F"	294433-1/B

VESSEL INFORMATION	
DESIGN PRESSURE	14.9 PSI DESIGN TEMP: 100 °F
HYDRO TEST PRESSURE	0 PSI DESIGN VACUUM 4 WATER IN HG.
HEAT TRANSFER INFORMATION	
DESIGN PRESSURE	100 PSI DESIGN TEMP: 100 °F
TEST PRESSURE	130 PSI VOLUME .736 CU. FT.
MEDIUM	NONE / GLYCOL

EST. EMPTY WEIGHT = 8680 LBS
SCALE 1"=32" (DO NOT SCALE THIS DRAWING)

DRAWN BY S. MACKAY DATE 11/19/02
REVIEWED BY R. ZILER DATE 11/20/02
REVIEWED BY A. FOELL DATE 01/6/03
APPROVED BY DATE

SOLD TO REDHOOK ALE BREWERY
ADDRESS PORTSMOUTH, NH
CUSTOMER ORDER NO. AL TRIPLETT

TITLE 8,300 GAL MODEL "F"
CONE BOTTOM FERMENTER

QUANTITY ONE

This drawing and any print thereof is the property of the PAUL MUELLER CO., Springfield, Mo., and is subject to return on request of this company. The information shown is confidential and the recipient by accepting this drawing agrees not to use any information contained hereon in any manner which will be detrimental to the PAUL MUELLER CO.

**200 cellar
MUELLER
2 Brew**
P. O. BOX 828 / SPRINGFIELD, MISSOURI 65801-0828, U.S.A.

SALES ORDER & SERIAL NO. 294433-1
DRAWING NO. FP13064 D

SYM.	CHANGE	BY	DATE
B	TEST PRES. WAS 150* MODIFIED NOTES* ELEV OF #11 WAS 9 1/2" PIVOT WAS AT 270° QTY WAS 2*	ALF	01/21/03
A	MODIFIED PER CUST, MARKED DWGS.* DELETED ITEMS #10, 12, 15, 24, 27, 36 & 40.* DELETED NOTE #18* CHANGED DESCRIPTION ITEMS #21 & #22.* ADDED "AISLE SIDE" NOTATION* TANK NUMBER WAS #304* #35 WAS AT 0°* #11 WAS AT 225°* MOVED #6 TO 90°* MOVED #7 TO 270°* ADDED DETAIL C* ADDED ITEM #23 & NOTE #24* ADDED MANWAY P/N# #23 WAS 3" SCH 10 PIPE*	ALF	12/22/02