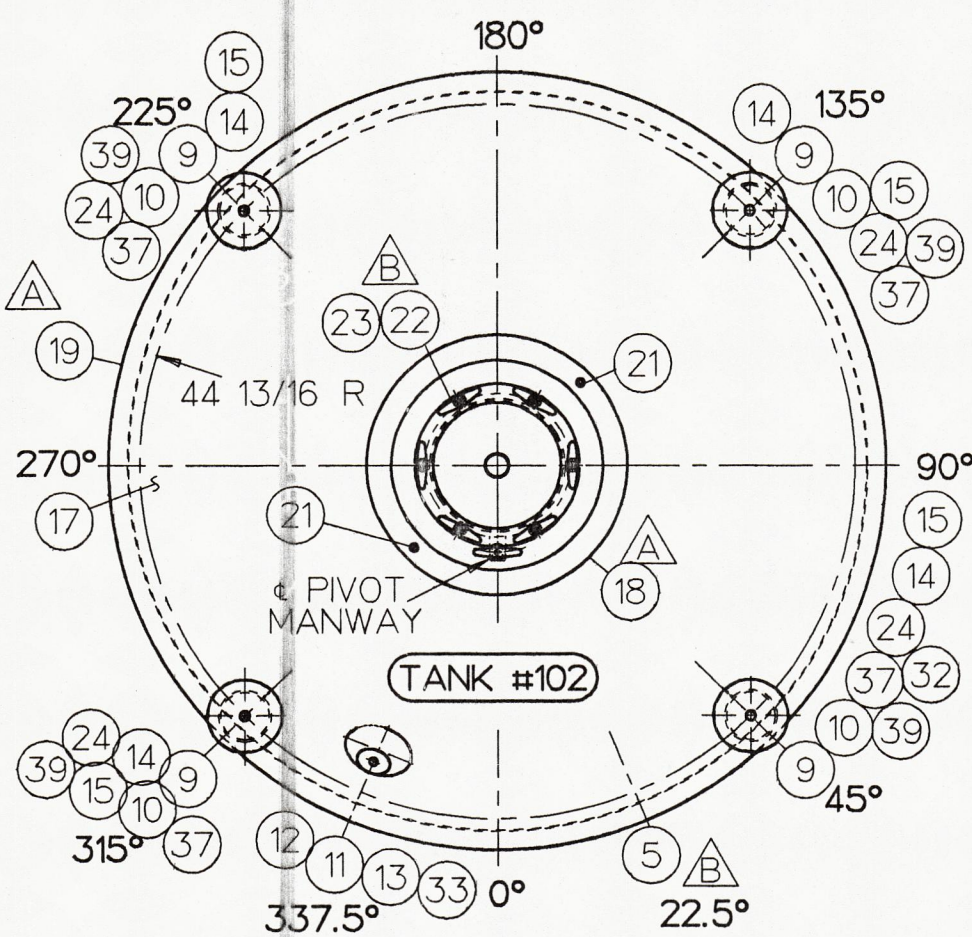
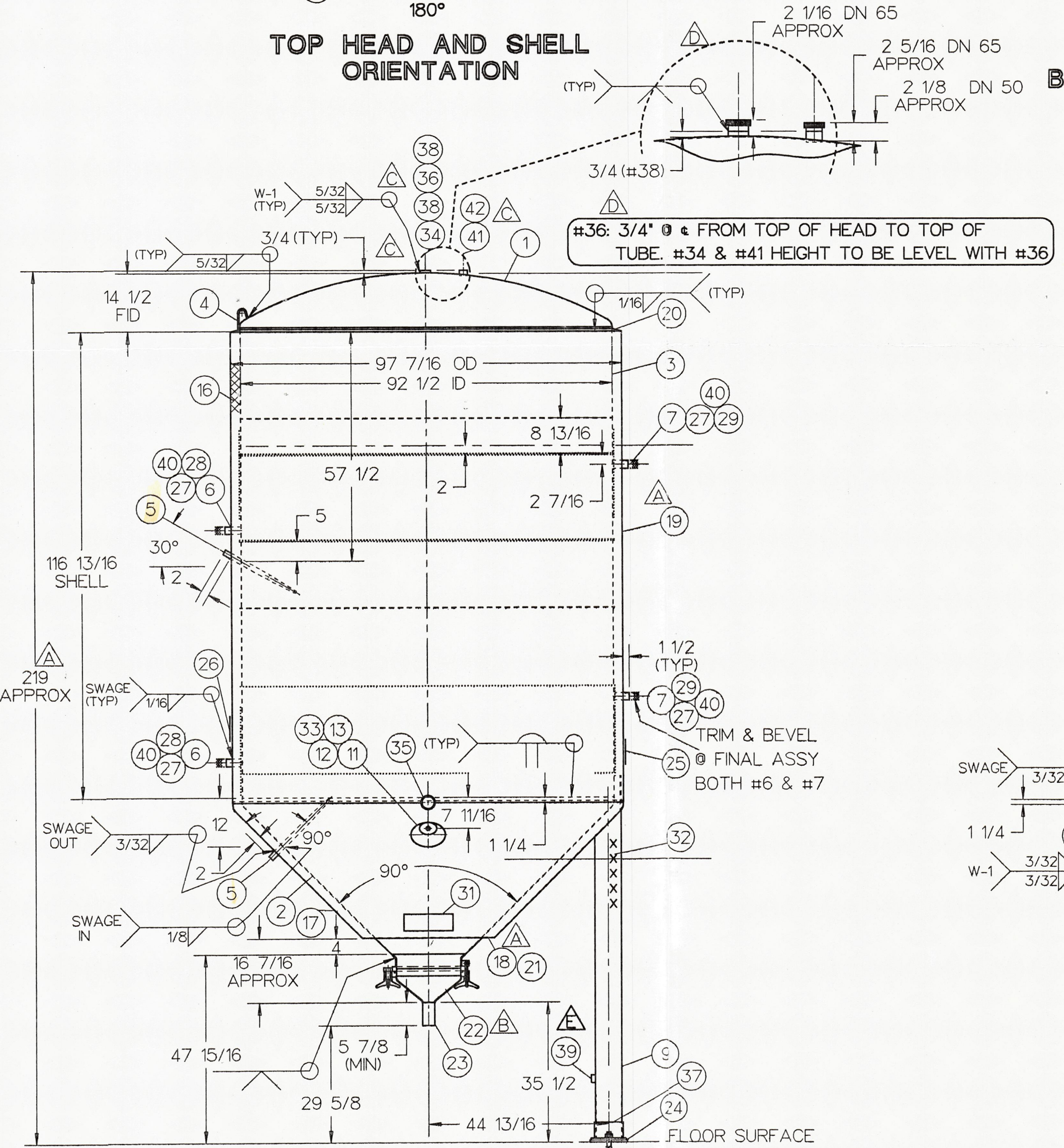


FOR TOP HEAD AND SHELL ORIENTATION SEE DRAWING FP08714-C.
Thank You very much
Rush JOHNSON

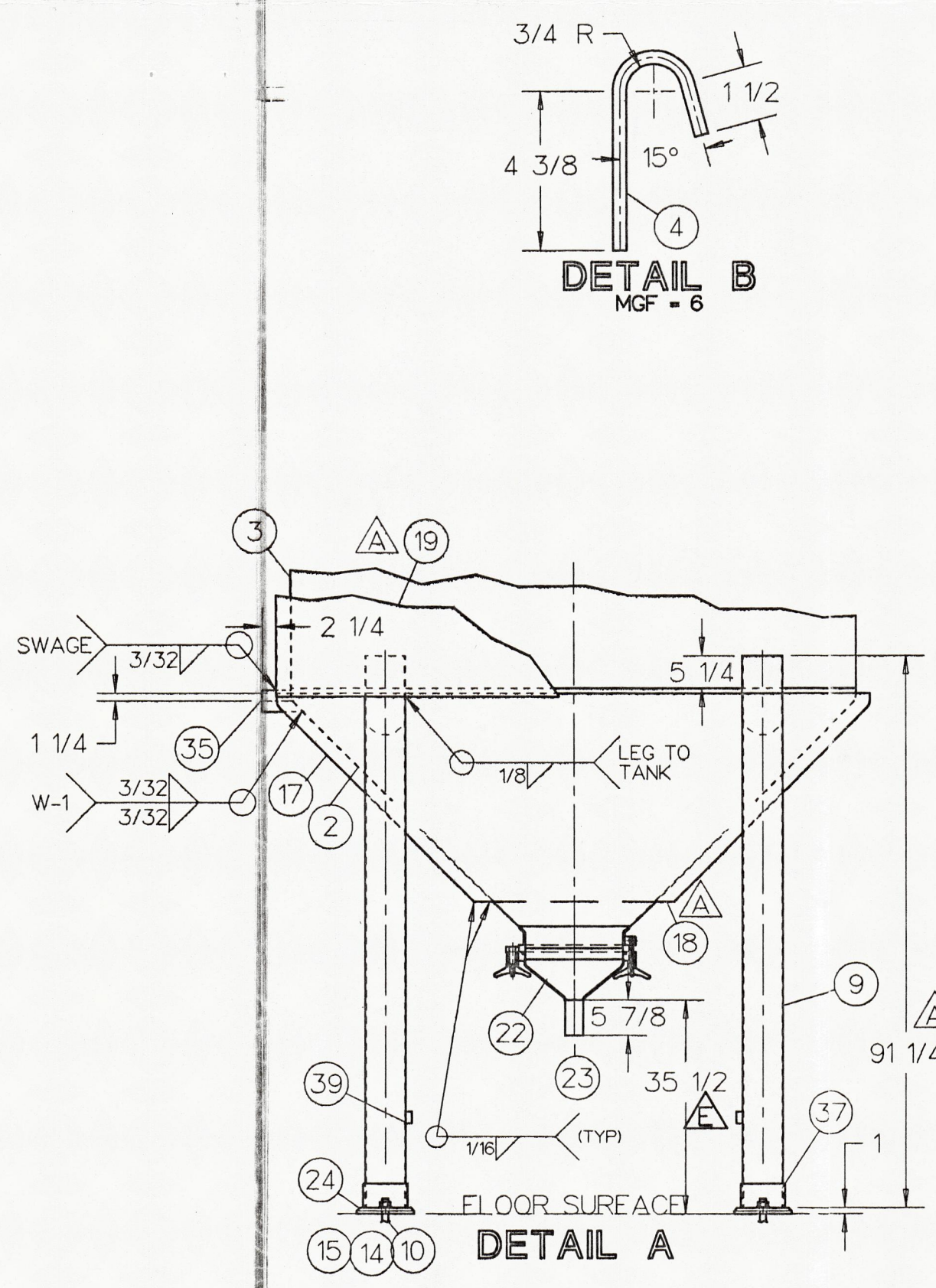


TOP HEAD AND SHELL ORIENTATION

BOTTOM VIEW OF BOTTOM HEAD ORIENTATION
TRUE ORIENTATION



ELEVATION VIEW
SEE TOP HEAD VIEW FOR TRUE ORIENTATION



DETAIL B
MGF = 6

DETAIL A

CUST NO.	ITEM NO.	NO. REQD	PART NO.	DESCRIPTION	DRAWING NO.
	1			TANK ASSY 4,150 GAL MODEL "F" SPECIAL CONE BOTTOM	FP08650 D
	1	1	101	HEAD TOP 10GA 304 S/S STD F & D 2"KR 1"SF	
	2	1	102	HEAD BOT INNER 10GA 304 S/S 90° CONE 2"KR 1.5"SF	
	3	1	103	SHELL 12GA 304 S/S W/24GA 304 S/S INFLATED TEMP-PL	FP08651 D
	4	2	9824533	LUG LIFTING SGL WALL .375"PL X 2.25"W 304 S/S	DETAIL B
	5	2	9824639	WELL ASSY THERM .75"NPT 316L S/S OAL 20 5/8"	
	6	2	(REF)	CONN TP-PL INLET 1.5" 304 S/S SCH 40 PIPE 6"LG TOE (9801781)	FP08651 D
	7	2	(REF)	CONN TP-PL OUTLET 1.5" 304 S/S SCH 40 PIPE 6"LG TOE (9801781)	FP08651 D
	8				
	9	4	109	LEG 6" 304 S/S SCH 40 PIPE	9000263 B
	10	4	CUST FURN	TIE DOWN BOLT 1-8NC (CUSTOMER SUPPLIED/INSTALLED)	
	11	1	9803210	TRYCOCK PERLICK .25" 316 S/S F-27805-SS	9900633 A
	12	1	9802383	GASKET FIBER PERLICK F-11284-1	9900633 A
	13	1	9802384	ADAPTER WELD IN .25" 304 S/S	
	14	4	CUST FURN	WASHER FLAT 1" (CUSTOMER SUPPLIED/INSTALLED)	
	15	4	CUST FURN	NUT HEAVY HEX 1-8NC (CUSTOMER SUPPLIED/INSTALLED)	
	16	A/R	9902473	INSULATION 2" URETHANE 2" X 4' GROOVED	
	17	1	117	HEAD OUT BOT 12GA 304 S/S 90° CONE 2"KR 1"SF	
	18	1	118	RING ENCLOSURE .1875" NOM 304 S/S 32.75"OD X 26.6875"D	
	19	1	119	JACKET 12GA 304 S/S	
	20	1	120	BREAST RING 14GA 304 S/S	9000582 C
	21	2	9901490	VENT ASSY JACKET 1" DIA 304 S/S	9901490 A
	22	1	9822776	MANWAY ASSY 16" REDHOOK ALE STYLE 304 S/S 2B/2S BUFF WELDS	9500542 C
	23	1	123	EXTENSION 3"OD X .065"W TUBE 304 S/S 6"LG (POLISHED ID) (OUTLET)	
	24	4	124	BASE PLATE 1"THK 9.375"OD X 1.25"ID 304 S/S	
	25	1	3743	PLATE NAME PROCESS 2.175" X 9.5" 22GA 304 S/S	
	26	1	9803082	PLATE DATA MUELLER FOL 3.75" X 5.25" X .003"THK W/PRESSURE	
	27	4	9808631	LABEL CAUTION USE BACKUP WRENCH 3" X 2" LABEL BLUE W/WHITE	
	28	2	9901403	LABEL "IN" .5" X 1.5" SILVER W/BUE LETTERING POLY-STIK-S .005"THK	
	29	2	9901404	LABEL "OUT" .5" X 1.5" SILVER W/BUE LETTERING POLY-STIK-S .005"THK	
	30	1	9900380	ENVELOPE ASSY INSTRUCT SINGLE WALL TANK	
	31	1	9900362	PLATE CAUTION PRESSURE "CAUTION: THIS VESSEL MUST BE PROPERLY	
	32	1		PERMANENT STAMPED SERIAL NUMBER	
	33	1	9827639	RECESS COLLAR 14GA 304 S/S W/3"ID	
	34	1	065W164563	EXTENSION DN65 304 S/S 2.835"OD X 2"LG (TOP HEAD)	
	35	1	135	PIPE STUB 3"SCH 10 304 S/S 3" BEVEL END (OUTLET)	
	36	1	065W164563	EXTENSION DN65 304 S/S 2.835"OD X 2"LG (TOP HEAD)	
	37	4	137	LEG COLLAR 304 S/S .25"THK X 4"HIGH X 6.75"ID	9902363 B
	38	2	003	FITTING METRIC 304 S/S (CUSTOMER SUPPLIED DN 65 2.5" FOR #34 & 36)	NOTE 17
	39	4	139	LUG LEVELING .25"THK 304 S/S 1"W X 2"LG	
	40	4	9824549	LABEL ATTENTION "CUSTOMER" 3.5" X 1.75" X .005"THK MYLAR W/3M#468 ADH	
	41	1	050W164563	EXTENSION DN50 304 S/S 2.170"OD X 1.25"LG (TOP HEAD)	
	42	1	002	FITTING METRIC 304 S/S (CUSTOMER SUPPLIED DN 50 2" FOR #42)	
	43	1		LEG HOLDING JIG FOR REDHOOK (USED W/4,150 GALLON)	FP08778 C

NOTES:

- ALL MATERIALS OR COMPONENT PARTS CALLED OUT ON THIS DRAWING SHALL BE AS SPECIFIED OR APPROVED EQUAL.
- DIMENSIONS UNLESS OTHERWISE INDICATED ARE NOMINAL AND STANDARD SHOP TOLERANCES ARE TO BE EXPECTED. ENFEE 222 MEASUREMENTS FOR ANY FIELD ATTACHMENTS SHOULD BE VERIFIED ON SITE BY OTHERS BEFORE FABRICATION OF THE ATTACHMENTS.
- CORROSION DISCLAIMER**
PAUL MUELLER COMPANY IS NOT RESPONSIBLE FOR CORROSION OR SUITABILITY FOR USE OF ANY MATERIAL IN ANY PARTICULAR APPLICATION. THE CORROSION RESISTANCE AND SUITABILITY FOR USE OF A MATERIAL IS DEPENDENT ON OPERATING ENVIRONMENT AND CONDITIONS, CLEANING PRACTICES, AND MANY OTHER FACTORS BEYOND THE CONTROL OF THE EQUIPMENT FABRICATOR. THE USER OF THE EQUIPMENT BEARS TOTAL RESPONSIBILITY FOR CORROSION OR SUITABILITY FOR USE OF ALL MATERIALS IN THEIR PARTICULAR APPLICATION.
- ALL FLANGES WILL HAVE BOLT HOLES STRADDLE THE 0°-180° & 90°-270° CENTER LINES, UNLESS SPECIFIED OTHERWISE.
- VESSEL TO BE VENTED FOR SHIPMENT.
- ALL WELD SIZES ARE IN INCHES UNLESS SPECIFIED OTHERWISE.
- ALL WELD SIZES ARE MINIMUM AFTER GRINDING.
- SUITABLE PRESSURE RELIEF VALVE MUST BE INSTALLED BY CUSTOMER FOR TEMP-PLATE OPERATION.
- SUITABLE PRESSURE AND/OR VACUUM RELIEF VALVE MUST BE INSTALLED BY CUSTOMER FOR VESSEL OPERATION.
- PRODUCT SPECIFIC GRAVITY: 1.0135-1.0560
- REMOVE HEAT TINT FROM VESSEL INTERIOR WITH SHEET POLISHER.
- VESSEL DESIGNED FOR SEISMIC ZONE #2A
- ENTIRE CONE (ITEM #10) LEGS (ITEM #9) FOOT ASSY (ITEM #37) FOOT PADS (ITEM #24) AND MANWAY ASSY (ITEM #22) ARE TO BE GLASS BEAD BLASTED (GB).
- NO ESCUTCHEON PLATES ARE TO BE USED ON THESE TANKS.
- THESE TANKS ARE TO BE INSTALLED IN A NEW PLANT AND WILL BE THE "SHOW PLACE". PLEASE USE EXTRA CARE DURING PRODUCTION FOR TOP QUALITY RESULTS.
- ITEM 38 TO BE ASSY FITTING FOR #34 & 36. ITEM 42 TO BE ASSY FITTING FOR #41. CUSTOMER SUPPLIED METRIC SIZE 304 S/S AND MATED TO SALES FOR INSTALLATION BY PMCO.
- INSULATION (ITEM #16) IN BOTTOM CONE TO BE INSTALLED USING "PM" METHOD.
- STAMP TANK NUMBER (THREE DIGIT) AT HINGE POINT ON MANWAY.

MATERIAL FINISHES
INTERIOR #2B/(NOTE #10) EXTERIOR #2B/(NOTE #13)

WELD FINISHES
INTERIOR FINE GRIND (150G)
EXTERIOR BUFF (6F)/(NOTE #13)

SPECIFICATIONS VESSEL
CODE NONE
RADIOGRAPHY
Top Head To Shell NONE
Shell Bottom Head To Shell NONE
Bottom Head To Shell NONE

HEAT TRANSFER
CODE NONE
RADIOGRAPHY
Top Head To Shell NONE
Shell Bottom Head To Shell NONE
Bottom Head To Shell NONE

SIZE (GALLONS) - MODEL	SERIAL NUMBER
4,150 GALLON "F"	1645585-1-2-3

VESSEL INFORMATION		HEAT TRANSFER INFORMATION	
DESIGN PRESSURE	15 PSI	DESIGN TEMP	100 °F
HYDRO TEST PRESSURE	0 PSI	DESIGN VACUUM	4 WATER IN HG
DESIGN PRESSURE	100 PSI	DESIGN TEMP	100 °F
TEST PRESSURE	150 PSI	VOLUME	.333 CU. FT.
MEDIUM	NONE / GLYCOL	HEATING / COOLING	

EST. EMPTY WEIGHT - 4,340 LBS
SCALE 1/2" = 12" DO NOT SCALE THIS DRAWING
DRAWN BY RUSH JOHNSON DATE 6-19-95
REVIEWED BY A. FOELL DATE 7-31-95

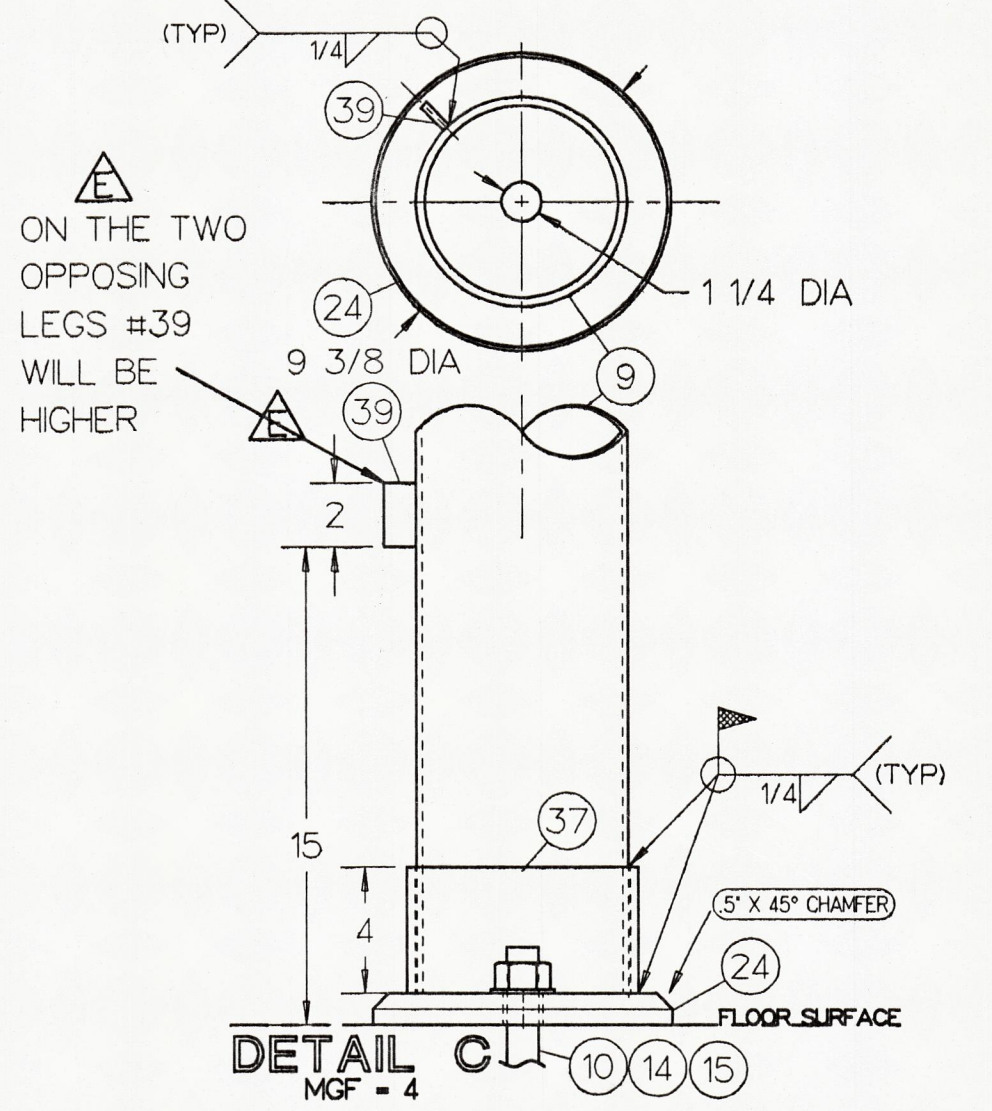
SOLD TO REDHOOK ALE BREWERY
ADDRESS PORTSMOUTH, NH
CUSTOMER ORDER NO. N5369

TITLE 4,150 GAL. MODEL "F" SPECIAL CONE BOTTOM
QUANTITY THREE

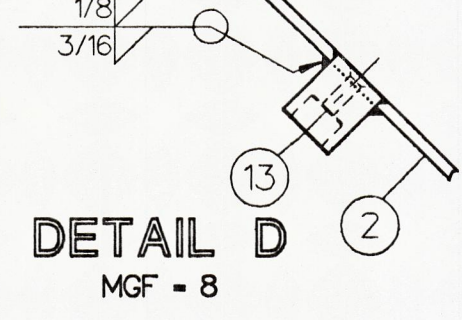
This drawing and any print thereof is the property of the PAUL MUELLER CO., Springfield, Mo., and is subject to return on request of this company. The information shown is confidential and the recipient by accepting this drawing agrees not to use any information contained thereon in any manner which will be detrimental to the PAUL MUELLER CO.

100 Cellar
PAUL MUELLER COMPANY
P. O. BOX 828 / SPRINGFIELD, MISSOURI 65801-0828, U.S.A.
Single Brew
SALES ORDER & SERIAL NO. 164585 1-2-3
DRAWING NO. FP08650 D

CUSTOMER APPROVAL
In order to insure delivery on requested date, APPROVAL DRAWINGS MUST BE RETURNED TO PAUL MUELLER COMPANY NO LATER THAN 6 JUL 95
 Proceed with fabrication according to this print.
 Proceed with fabrication making revisions marked on this print.
Signed _____ Dated _____
Company _____



DETAIL C
MGF = 4



DETAIL D
MGF = 8