

INDOOR

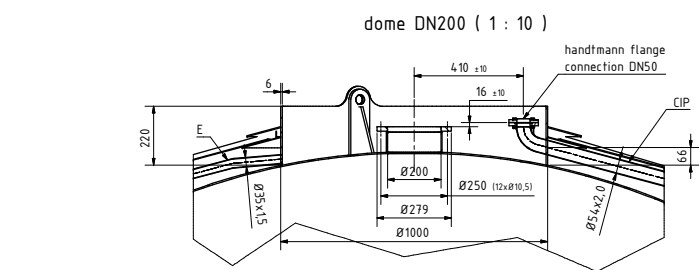
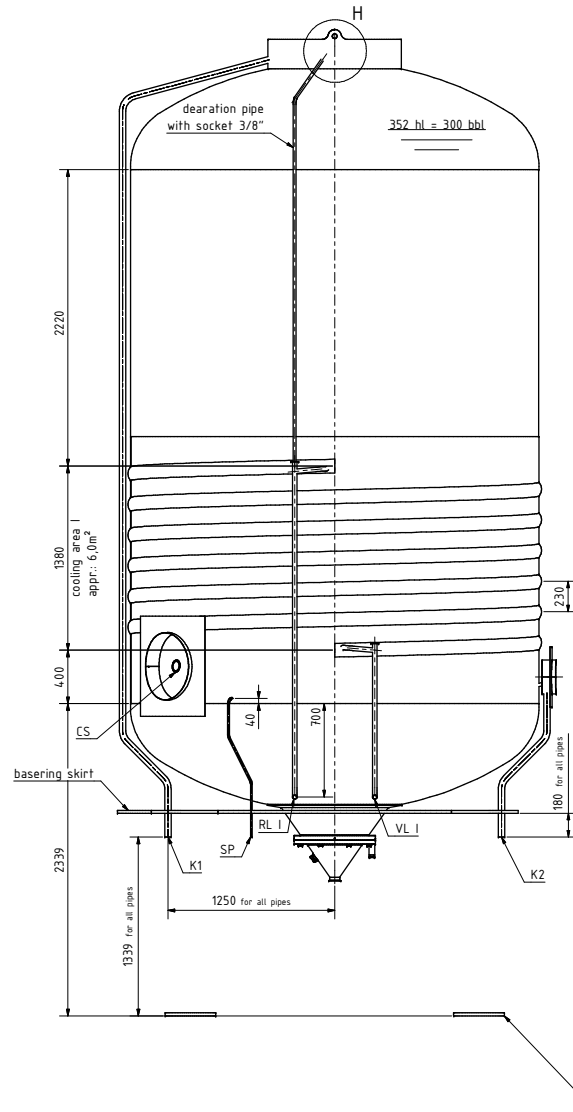
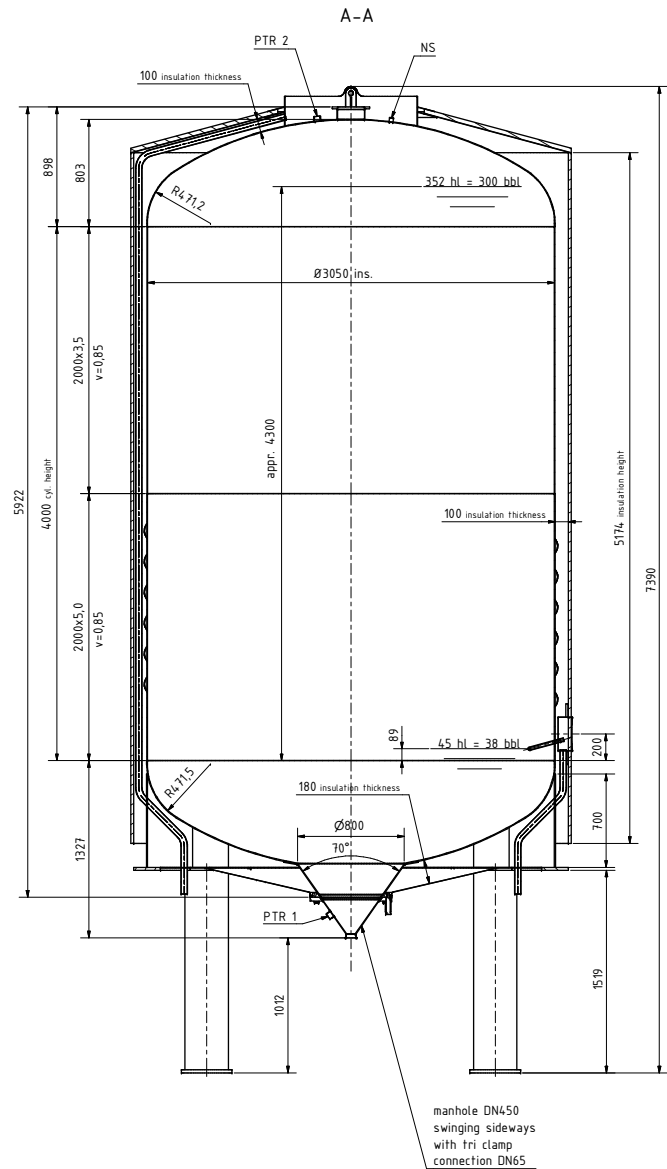
ASME Section VIII, Div.1

thorspherical head: DIN 28013
 wall thickness: 5,0mm
 min. wall thickness: 3,4mm
 inside radius: 24,48mm
 cyl. height: 25mm
 welding factor: v= 0,85
 material: DIN 10028-7 1D

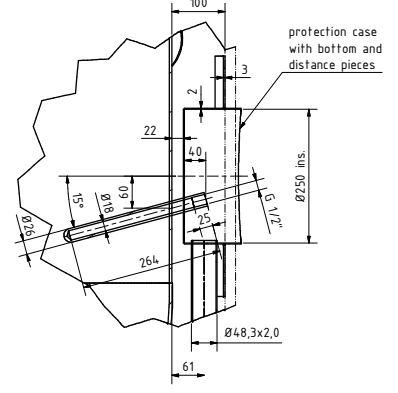
thorspherical head: DIN 28013
 wall thickness: 6,0mm
 min. wall thickness: 4,5mm
 inside radius: 24,49,6mm
 cyl. height: 25mm
 welding factor: v= 0,85
 material: DIN 10028-7 1D

skirt
 wall thickness: 8,0mm
 inside diameter: 3050mm
 cyl. height: 700mm
 material: S235JR

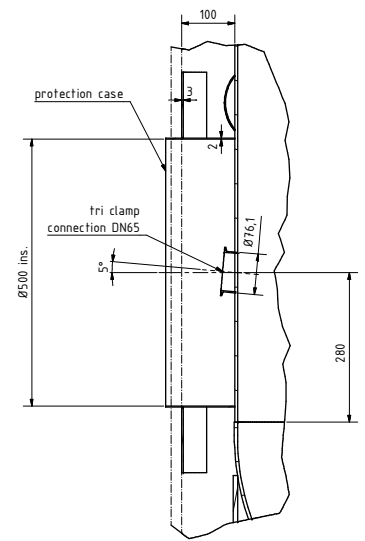
basing
 inside diameter: 3258mm
 outside diameter: 2858mm
 height: 20mm
 material: S235JR



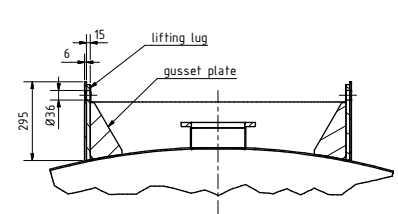
1x thermometer sleeve (1:5)



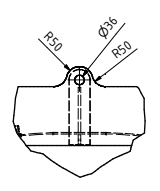
detail carbonation socket (1:5)



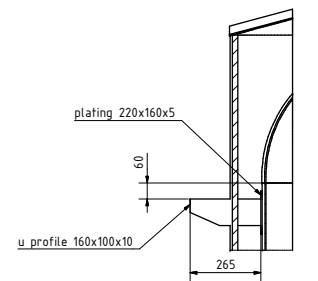
lifting lug (1:10)



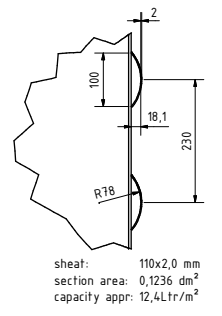
detail manhole DN450 (1:5)



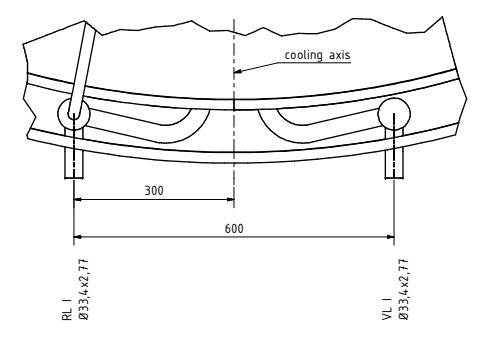
detail: walkway support for service walkway (1:10)



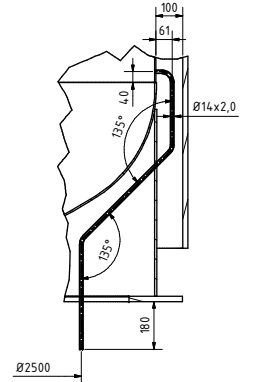
cooling profile cyl. part (1:5)



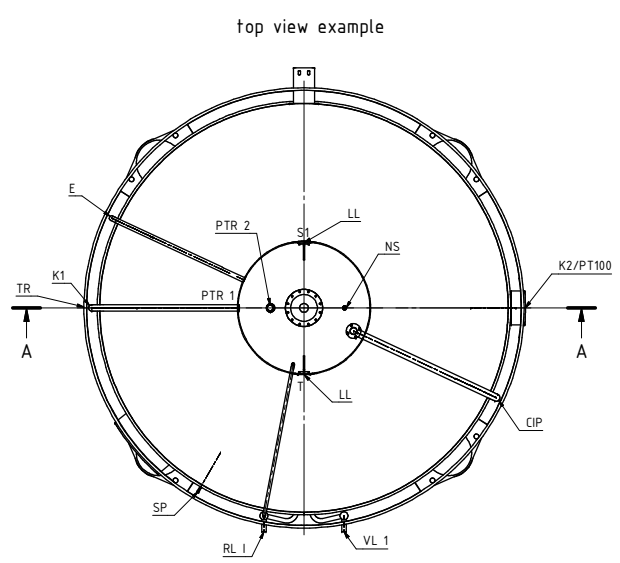
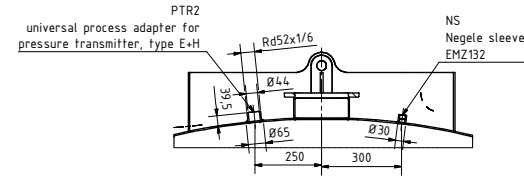
detail: cooling connections (1:5)



detail sample pipe (1:10)



detail process connection (1:10) for pressure transmitter 2 and high level probe



NB	according log of NB numbers
U	NB SERIAL NUMBER
ZIEMANN CERTIFIED BY:	
NAME OF MANUFACTURER: ZIEMANN + BAUER GmbH	
SN: 14300129/3000 8639	
YEAR BUILT: 2012	
W	M.A.W.P. M.D.M.T.
RT 4	VESSEL 200 at 30 °C -10 at 200
	JACKET I 300 at 30 °C -10 at 300
	JACKET II at at at at
	JACKET III at at at at
	JACKET IV at at at at
	M.A.E.W.P. M.D.M.T.
	VESSEL 3 at 30 °C -10 at 3

pipes and nozzles					
Mark.	Description	DN	Size	DIN	Remarks
CIP	CIP-pipe	50	Ø54x2,0	11850	flanged at the top
E	drain pipe	32	Ø35x1,5	1127	dome
K1	cable pipe 1	40	Ø48,3x2,0	1127	dome
K2	cable pipe 2	40	Ø48,3x2,0	1127	PT100
VL I	cooling inlet I	25	Ø33,4x2,77	ASTM A 312	cyl. Part
RL I	cooling outlet I	25	Ø33,4x2,77	ASTM A 312	cyl. Part
SP	sample pipe	10	Ø14x2,0	11850	
PT100	thermometer sleeve		G 3/8"		
PTR1	pressure transmitter 1		UNI D65		lower bottom
PTR2	pressure transmitter 2		UNI D65		top head
NS	Negele sleeve		EMZ132		for high level probe
CS	carbonation socket	65			tri clamp connection
S1	swing cone hinge				
T	name plate				
WS	walkway support				
LL	lifting lug				
TR	transport position				

Working conditions:		
design overpressure	2,0 bar	cooling 3,0 bar
test overpressure	2,6 bar	3,9 bar
vacuum resistance	300mm WC	
design temperature	-10°C/+30°C	-5°C/+30°C
earthquake loads	max. 0,6 x g	
location	indoor	

cooling medium:	Glycol -4,0°C
Surfaces:	
top head:	the complete inner surface ground Ra <= 0,4µm
cyl. Part:	cold rolled material according DIN EN 10028-7
cone:	the complete inner surface ground Ra <= 0,4µm
welding seams:	internal welds ground Ra max. 0,8 µm external welds metallic bright

The tanks are completely pickled inside and outside and passivated.

mild steels S235JR/S355J0: - skirt primed with 2 coats of anticorrosive paint
 - pipe legs primed with 2 coats of anticorrosive paint
 - top coat skirt and pipe legs primed with colour RAL 5017

Tank insulation:	HR Polyurethane foam, CFC-free, min. 40 kg/m³
-------------------------	---

insulation thickness	top head: 100mm cyl. Part: 100mm cone: 100mm
The tanks protected 2-times by anticorrosive paint acc. Ziemann standard	
Insulation cladding:	
top head:	even sheet of aluminium, blank t=1,0mm
cyl. Part:	execution as 1-layer conical roof trapezoidal sheet of aluminium (20/125), blank t=0,8mm
cone:	stainless steel, tightly welded, t=2,0mm outer surface pickled

DESIGN CHECKED AGAINST ASME CODE EDITION 2010
 SECTION VIII - DIVISION 1
 CORROSION ALLOWANCE: NONE
 MATERIAL SA 240 GR 304; SECTION II PART A
 HEAT TREATMENT: NONE
 RADIOGRAPHIC EXAMINATION ACCORDING DRAWING No.: 1020701 Rev.0
 HYDROTEST ACCORDING UG - 99
 CHARTER IMPACT TEST EXEMPTED AS PER UHA - 51(d)
 TOLERANCES ACCORDING UG 80 - 81, UG33, UG35
 OUT OF ROUNDNESS <= 0,5%
 DIMENSION: SI - UNITS
 CODE CASES: NONE
 CRN NUMBER: NONE
 NB STAMP: 161 - 163

HORIZONTAL PROJECTION		
Orientation of sockets exclusively as determined by the general layout		
Serial number: 8639-14300129/3000 to 8641-14300129/3000	Year of manufacture: 2012	

Taking care of brewing			
D	Issued	16.02.2012	Client: GOLDEN ROAD BREWERY LV/UA
C	Accepted	16.02.2012	
R	Approved	16.02.2012	
A	In clamp connection	16.02.2012	Description: Bright door tank Ø3050MM INS.
Index	Revision	Date	Name
Drawn	Date	Name	Weight
Checked	Date	Name	Material
Designed	Date	Name	Material
Project	14300129_3000		
Scale	1:20	Drawing	1019842
Sheet	D	1/1	40