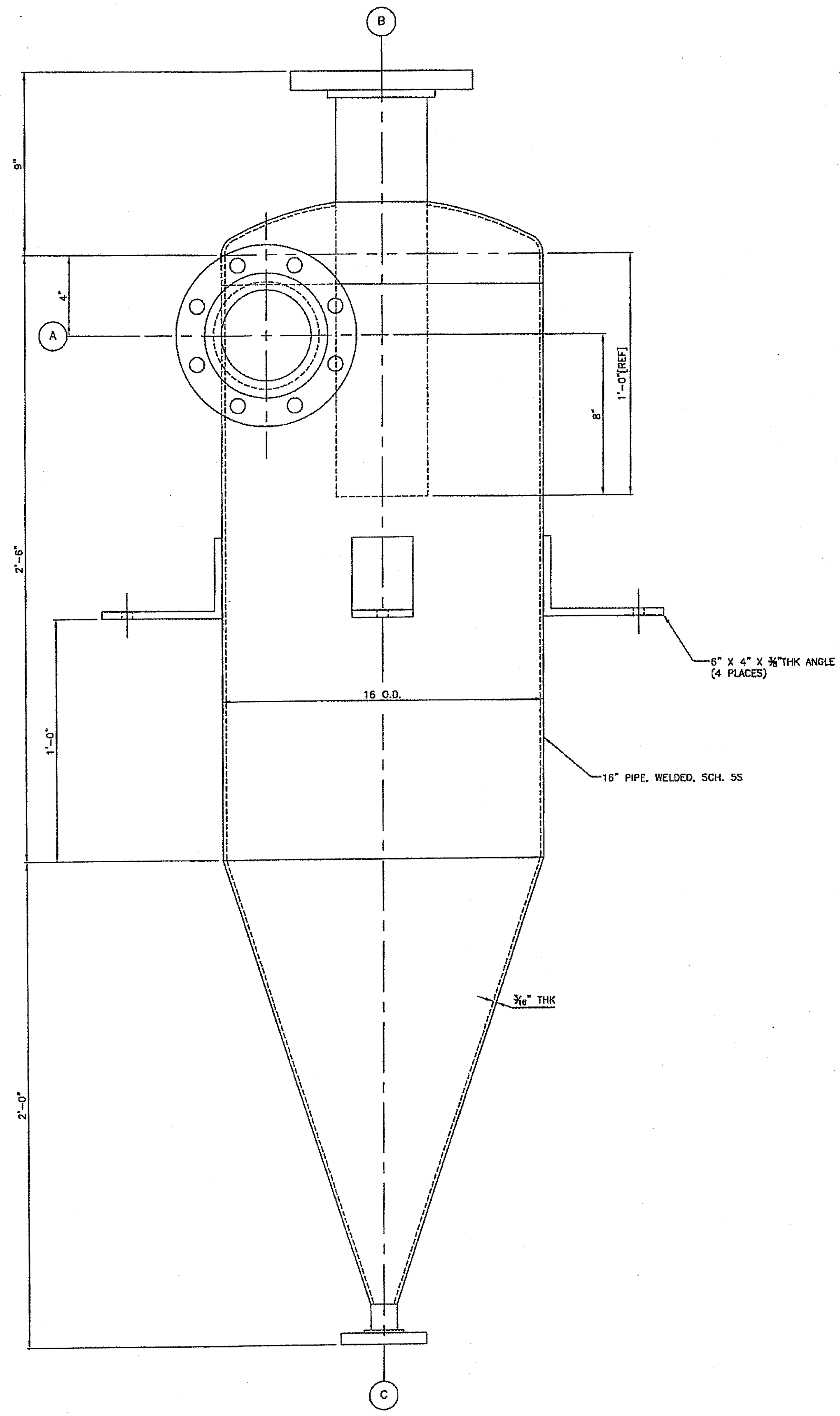
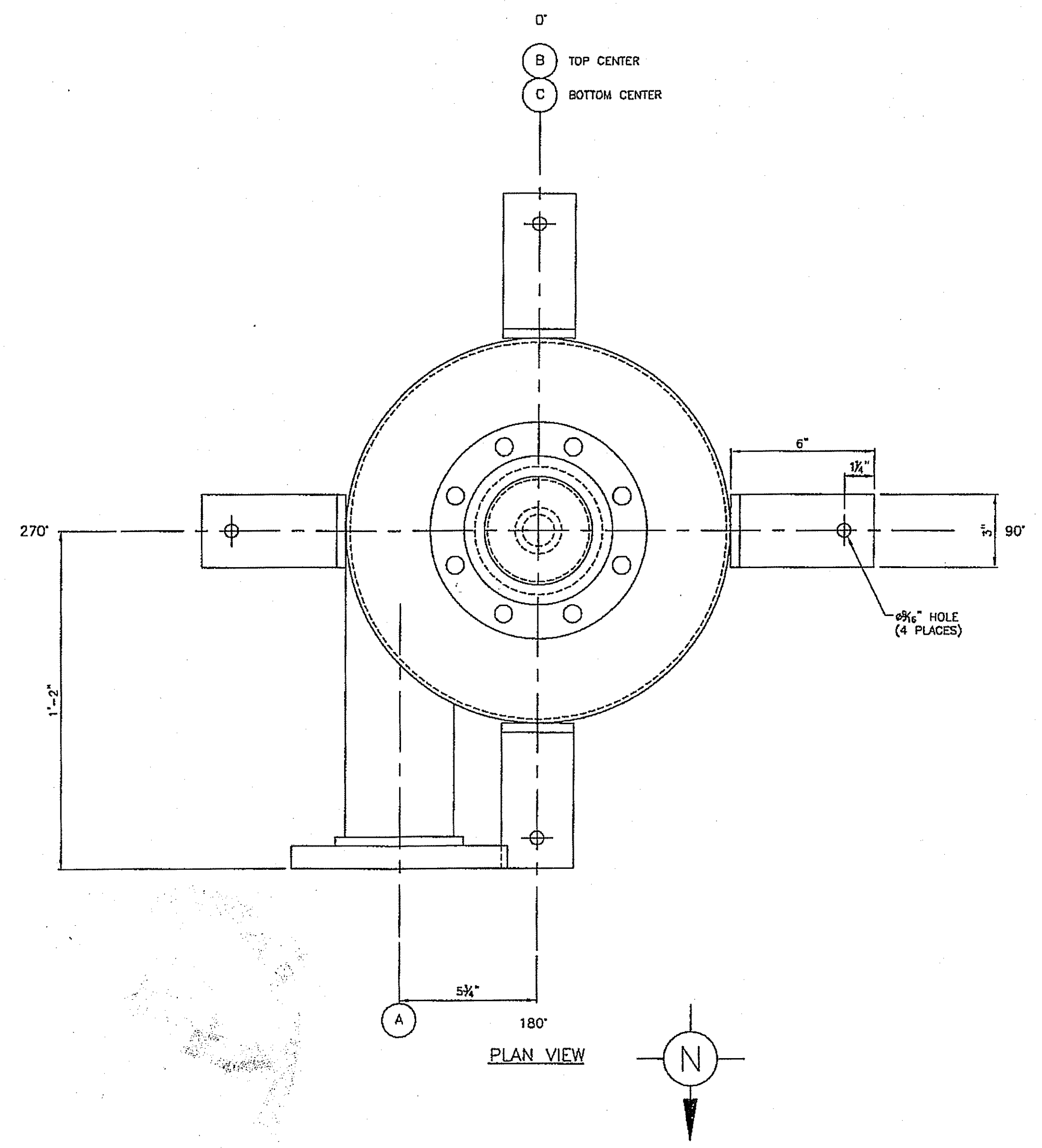


NOZZLE	SIZE	TYPE	FLANGE RATING	FLANGE MATERIAL	PIPE RATING	PIPE AND STUB-END MATERIAL	SERVICE
A	4"	R.F. SLIP-ON	150#	304L S.S.	SCH. 10S	304L S.S.	INLET
B	4"	R.F. SLIP-ON	150#	304L S.S.	SCH. 10S	304L S.S.	DISCHARGE
C	1"	R.F. SLIP-ON	150#	304L S.S.	SCH. 40S	304L S.S.	OUTLET



ELEVATION VIEW



PLAN VIEW

- NOTES:**
1. FLANGE BOLT HOLES SHALL STRADDLE NORMAL VESSEL CENTERLINES UNLESS NOTED.
  2. WELDS SHALL BE NEAT IN APPEARANCE, FREE OF SLAG, UNDERCUTS AND OTHER DEFECTS.
  3. NOZZLE DIMENSION TOLERANCES SHALL BE +/- 1/8 INCH UNLESS OTHERWISE NOTED.
  4. REINFORCING PADS AND PAD SECTIONS SHALL HAVE 1/4 INCH NPT WEEP HOLE LOCATED AS LOW AS POSSIBLE IN THE PAD WHEN THE VESSEL IS IN OPERATING POSITION. PLUG WEEP HOLE WITH HEAVY GREASE.
  5. VESSEL SHALL BE CLEANED OF SCALE, OIL, WELD SPATTER AND ALL OTHER FOREIGN MATTER BEFORE HYDROSTATIC TESTING.
  6. COAT ALL NOZZLE GASKET SURFACES WITH PROTECTIVE LUBRICANT BEFORE BLANKING FOR SHIPMENT.
  7. PROTECT ALL MACHINED SURFACES AND THREADED CONNECTIONS WITH WOOD OR PLASTIC PROTECTORS BEFORE SHIPMENT.
  8. FULL PENETRATION BEVEL WELD, WHERE REQUIRED.
  9. WELD-IN THERMOWELLS SUPPLIED BY CIW.
  10. REINFORCING PAD MATERIAL TO BE SAME AS VESSEL SIDE MATERIAL.

DESIGN INFORMATION	
DESIGN CODE:	ASME LATEST CODE, LATEST ADDENDA
DESIGN PRESSURE:	
DESIGN TEMPERATURE:	
WEIGHT EMPTY:	162 LBS
WEIGHT FULL OF WATER:	436 LBS
WEIGHT, OPERATING:	162 LBS
INTERIOR VOLUME:	32.8 GAL
FINISHES:	
INTERIOR:	NA
EXTERIOR:	PRIMER ON C.S.
MATERIALS:	VESSEL SHELL AND INTERNALS 304L S.S.
SUPPORTS AND LIFT LUGS:	C.S.
GASKETS:	NA
HYDRO TEST PRESSURE:	
CALC. #	
JOINT EFF.	0.70

No.	Revisions	Date	By	Designed By	Date Printed
0	ORIGINAL ISSUE	2-2-07	CIW	CIW	2-2-07

**CROWN IRON WORKS CO.**  
MINNEAPOLIS, MINNESOTA 55440  
NOTICE: © 2001 CROWN IRON WORKS COMPANY  
THIS DRAWING AND INFORMATION ARE THE PROPERTY OF CROWN IRON WORKS COMPANY AND ARE NOT TO BE COPIED OR MISUSED.  
NOT RESPONSIBLE BEYOND OUR OWN WORK  
S.O. NUMBER 11476 | CIW FILE No. 403761

**TODD & SARGENT**  
620 Arrasmith Trail - Ames, Iowa 50010  
(515) 232-0442 - Fax: (515) 232-0682



SOY BIODIESEL  
-FOR-  
REG BIODIESEL  
ST. ROSE, LOUISIANA

INSTALLATION DRAWING  
V-489  
Job Number 20023 | Drawing No. MEC498 | Rev. No. 0

#115099