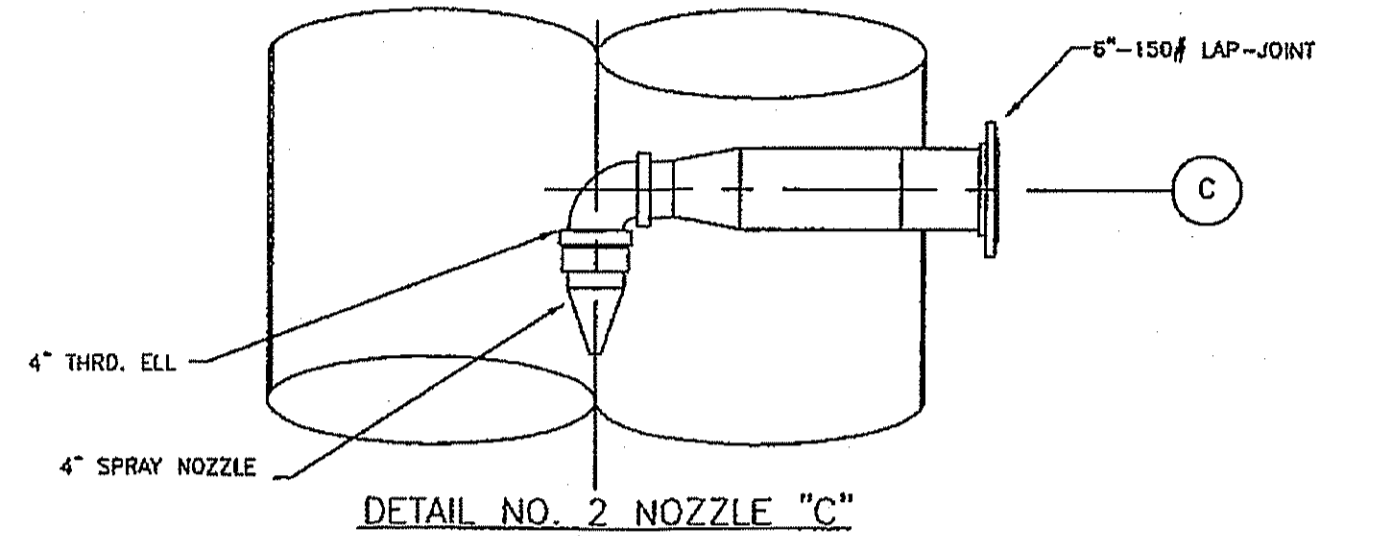
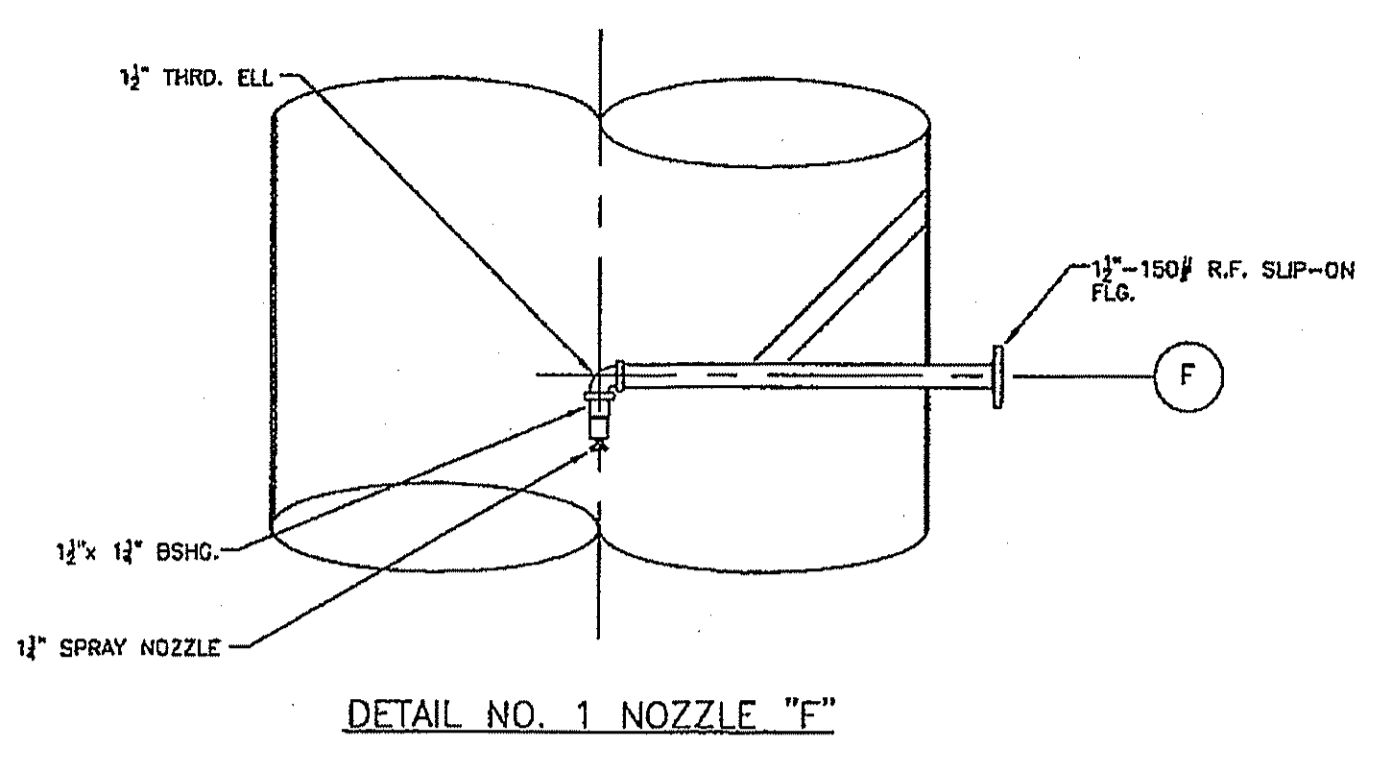
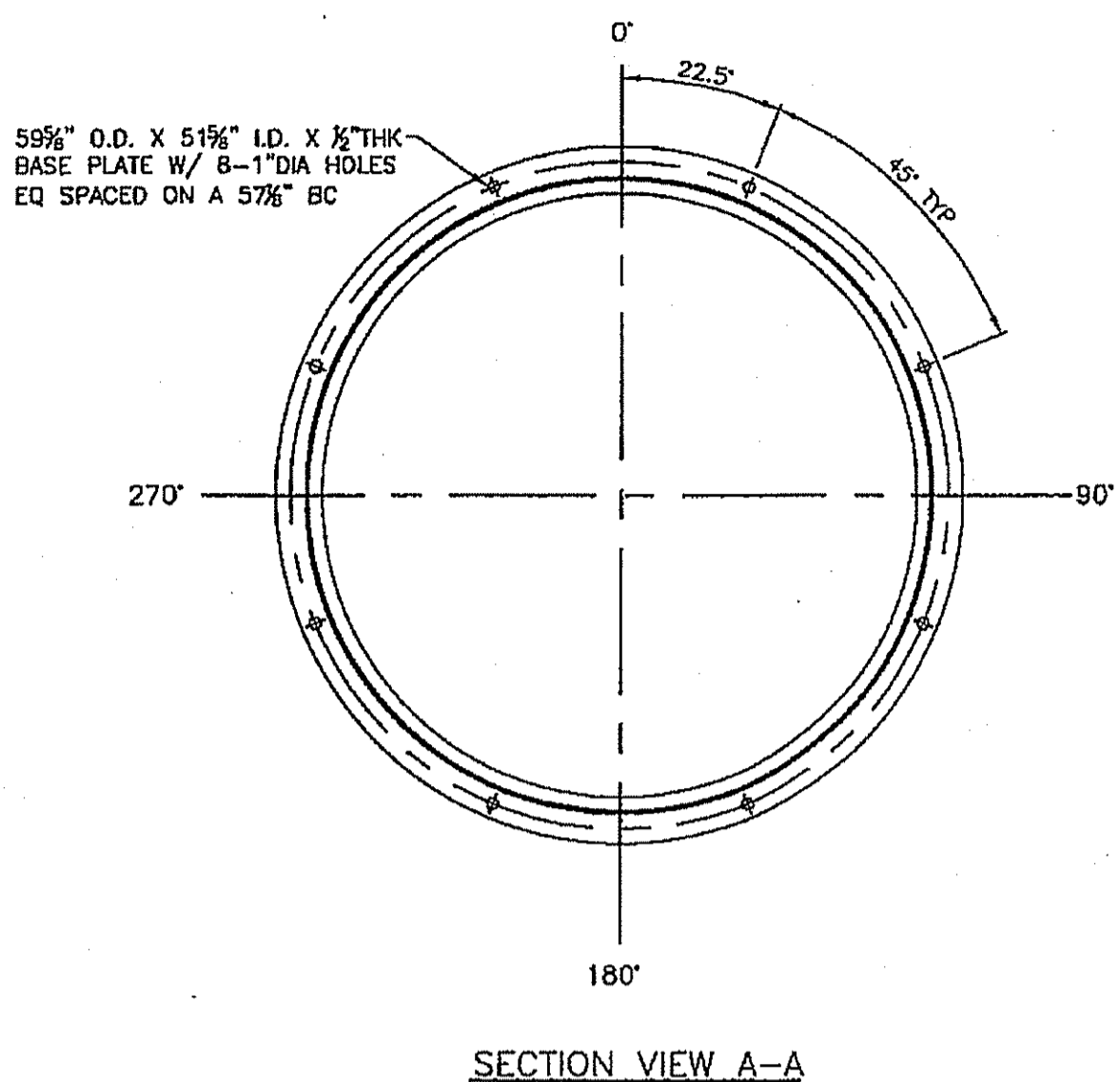
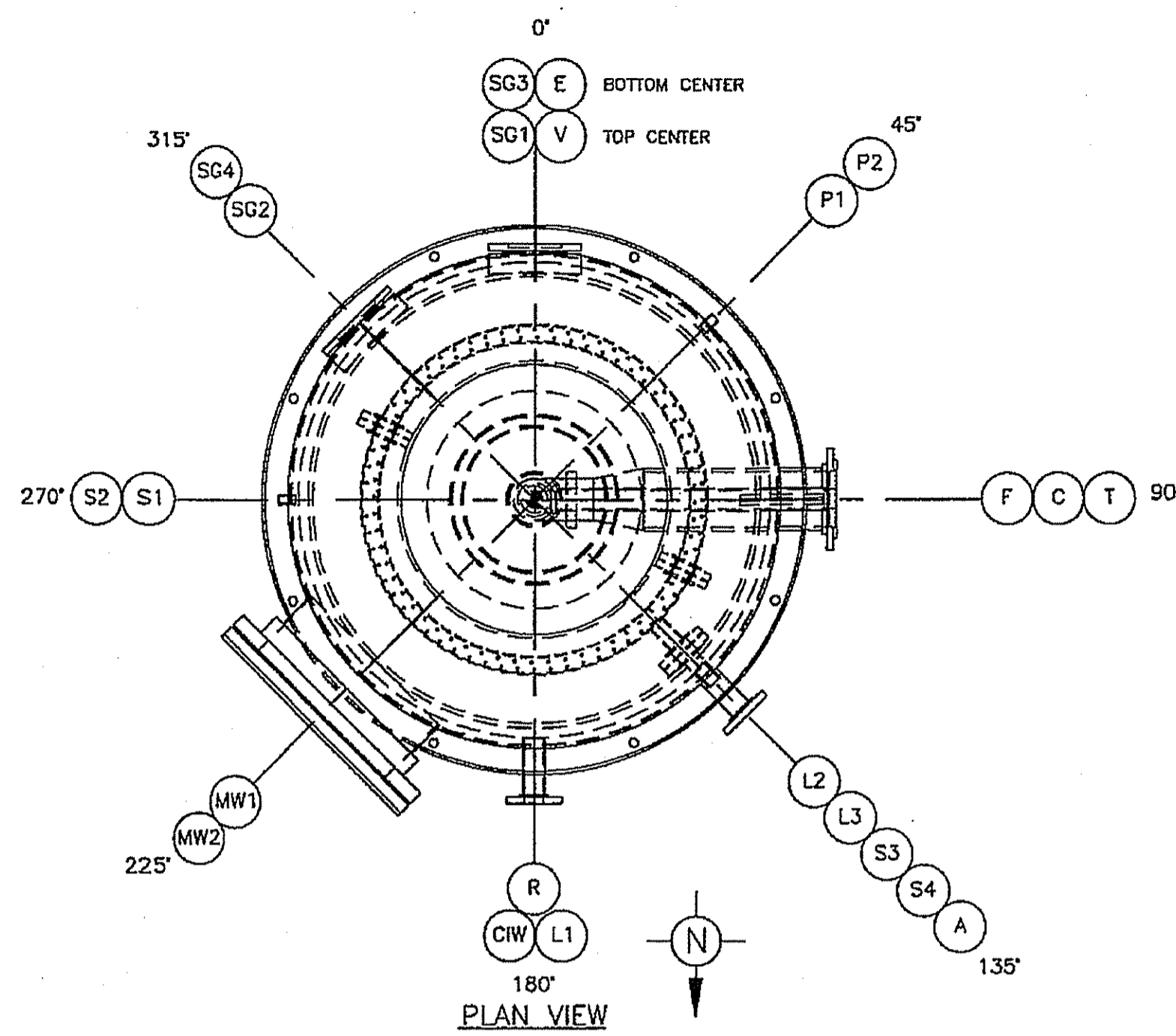
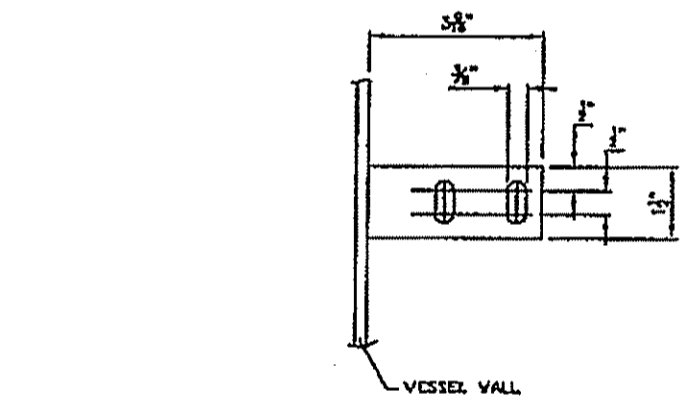
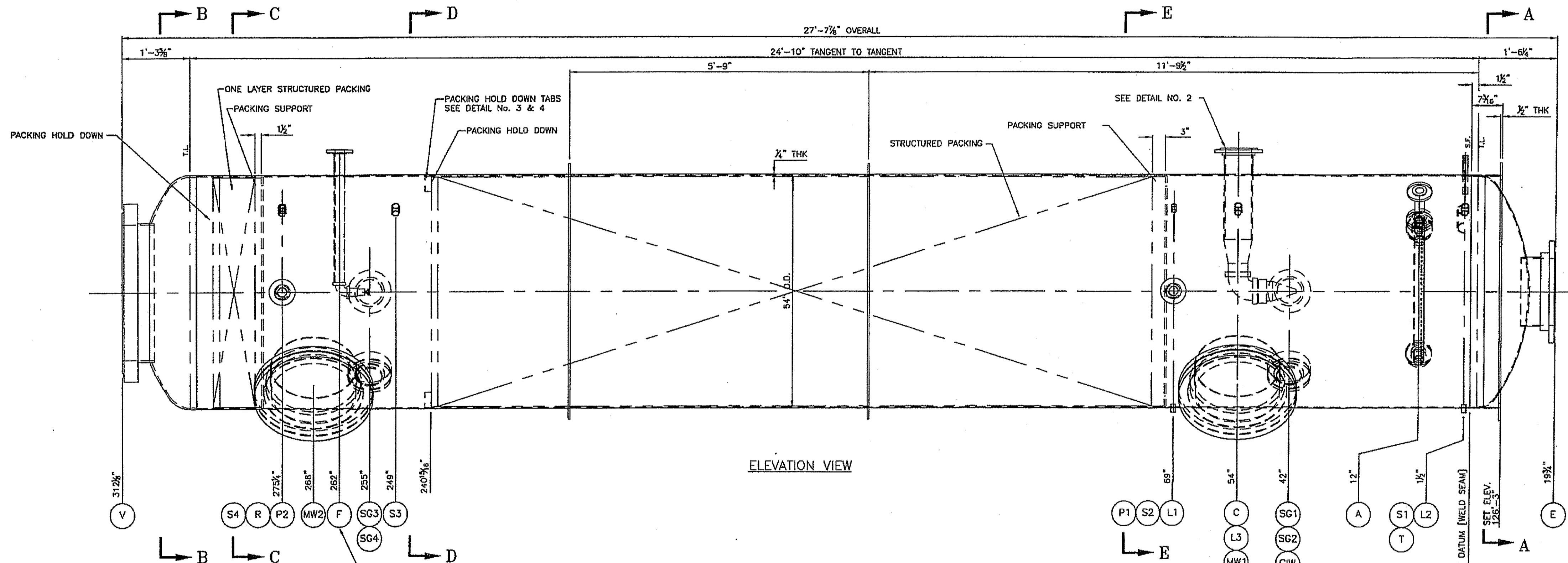


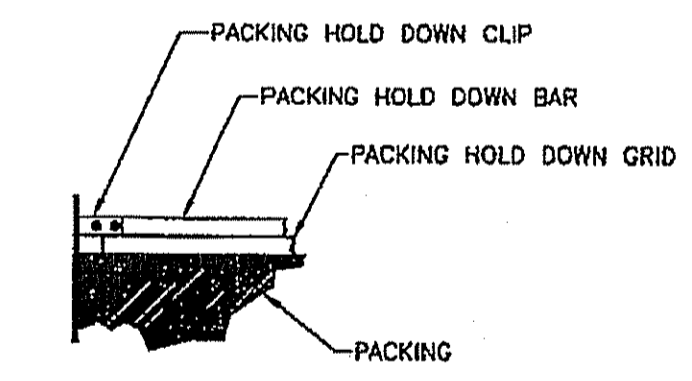
K:\PROJECTS\2000-2004\2003-REG-SAINT_ROSE_LA_MEC_DIV\MEC489-0-403760 V-425.dwg, SHEET 1, 3/30/2007 2:07:51 PM



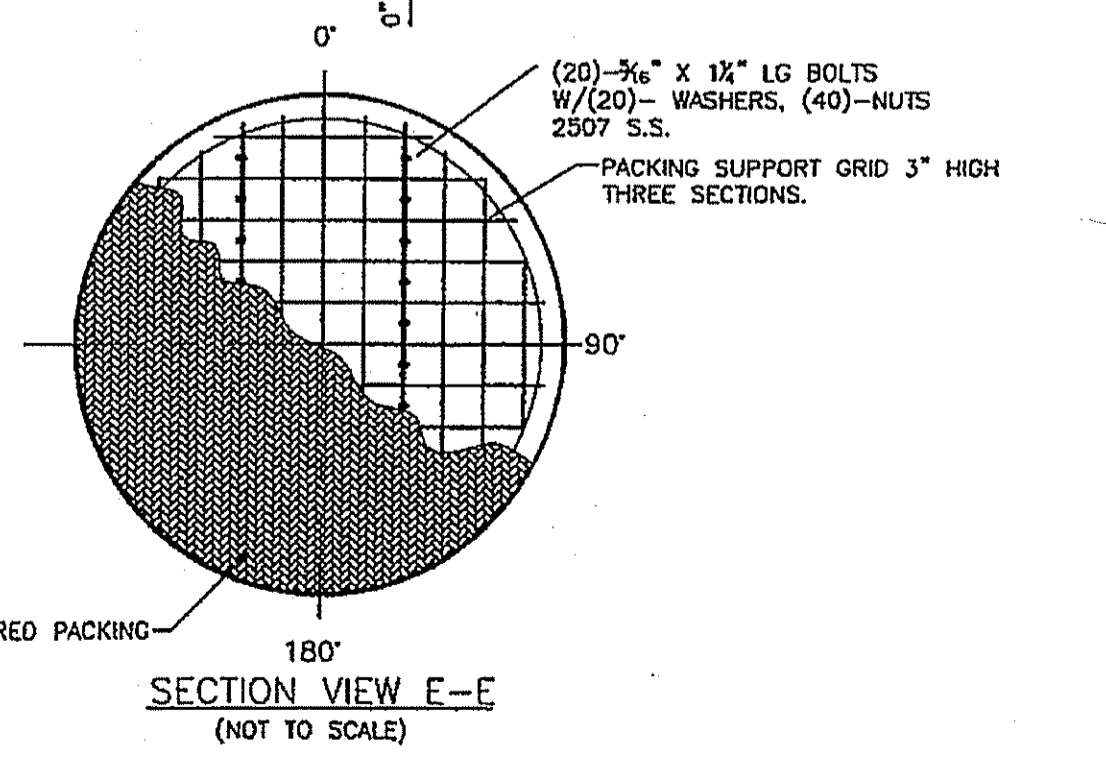
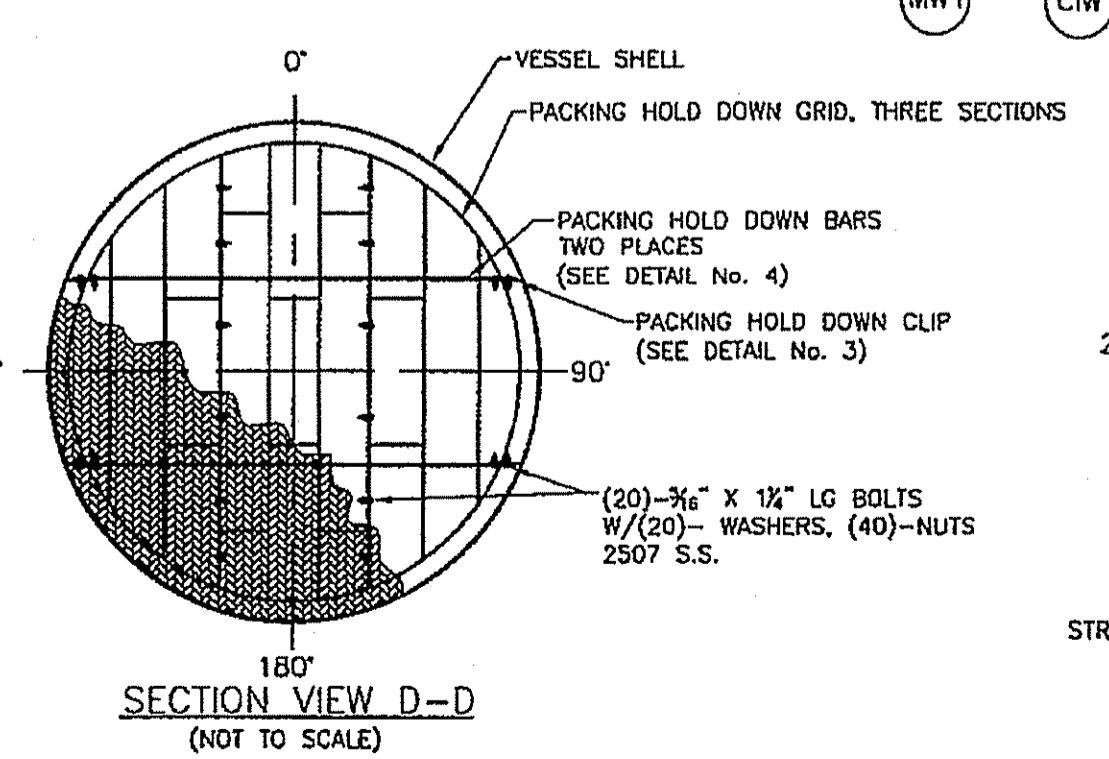
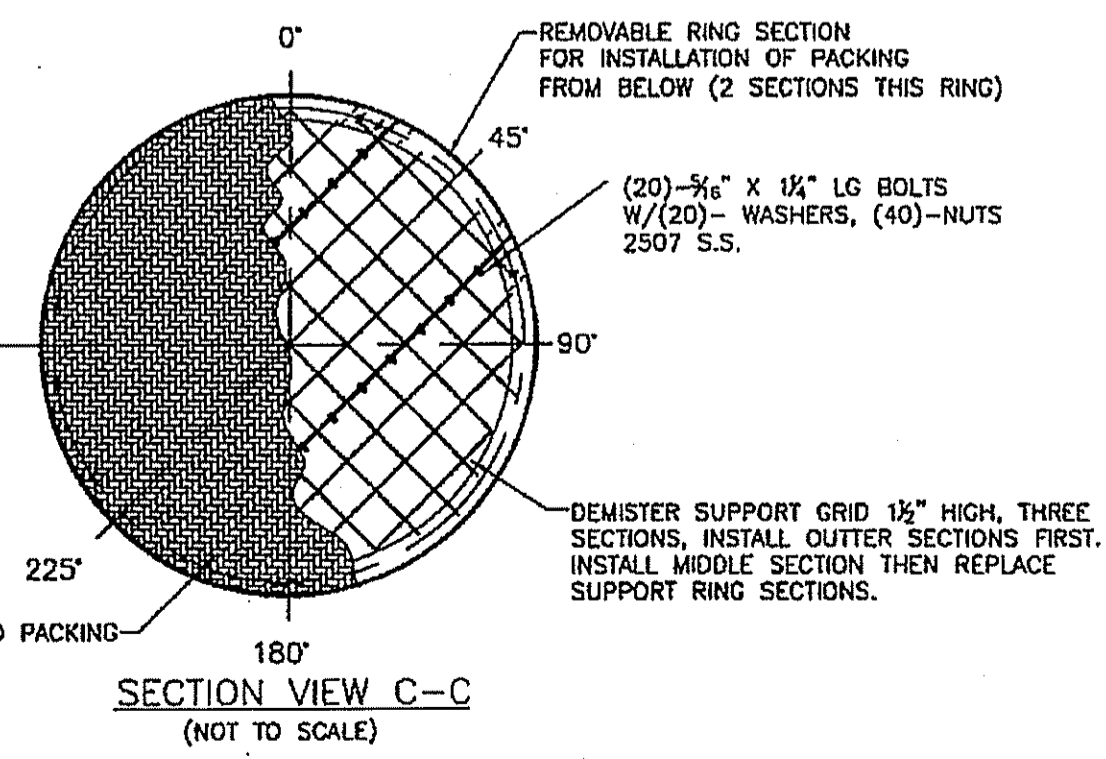
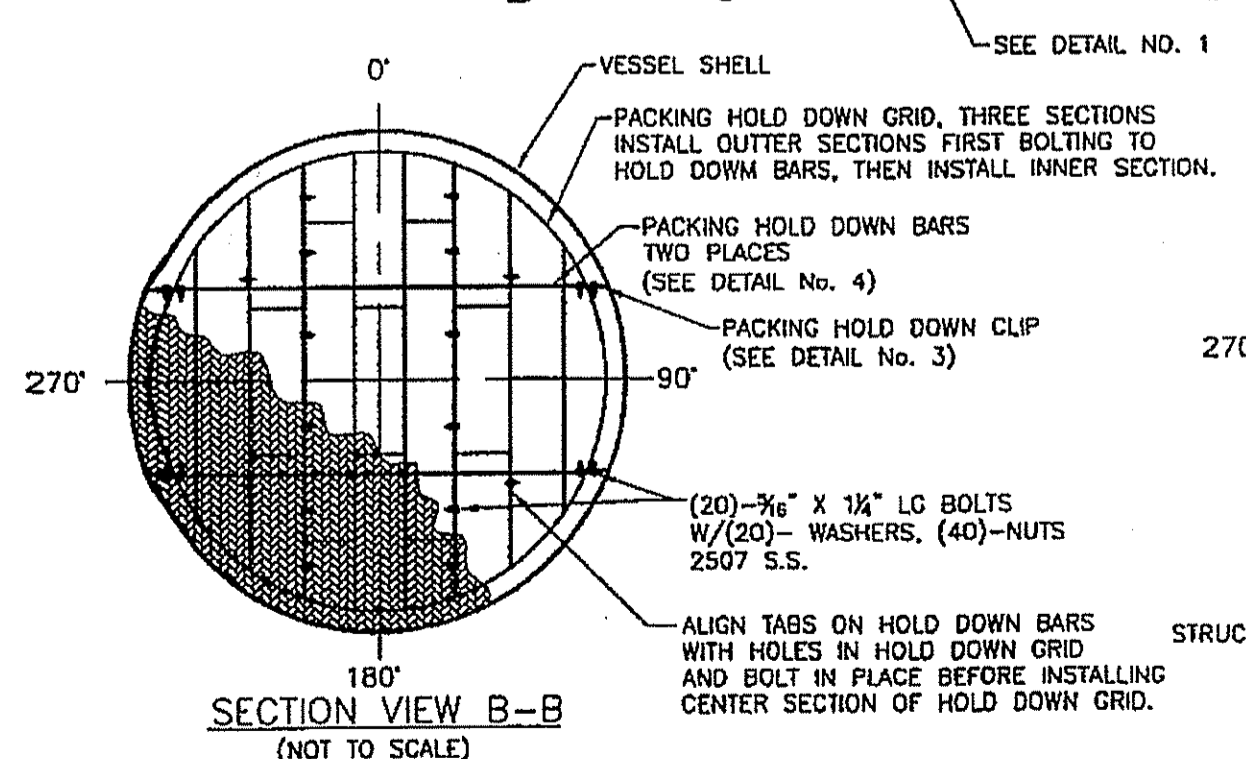
NOZZLE	SIZE	TYPE	FLANGE RATING	FLANGE MATERIAL	PIPE RATING	PIPE AND STUB-END MATERIAL	SERVICE
A	2"	R.F. SLIP-ON	150#	2507 S.S.	SCH 40S	2507 S.S.	STEAM SPARGE
C	6"	LAP-JOINT W/ STUB-END	150#	C.S.	SCH 40S	2507 S.S.	REBOILER CIRCULATION
CIW	LARGE	SEE DRAWING NP-6X9	-	-	-	-	NAMEPLATE
E	18"	LAP-JOINT W/ STUB-END	150#	C.S.	SCH 10	2507 S.S.	LIQUID EFFLUENT NOZZLE
F	1 1/2"	R.F. SLIP-ON	150#	2507 S.S.	SCH 40S	2507 S.S.	GLYCERINE FEED NOZZLE
L1	2"	R.F. SLIP-ON	150#	2507 S.S.	SCH 40S	2507 S.S.	LEVEL TRANSMITTER
L2	1"	COUPLING	3000#	2507 S.S.	-	-	LEVEL SWITCH
L3	1"	COUPLING	3000#	2507 S.S.	-	-	LEVEL SWITCH
MW1	20"	SEE DRAWING MW-6-2205	-	-	-	-	MANWAY
MW2	20"	SEE DRAWING MW-6-2205	-	-	-	-	MANWAY
P1	1/2"	COUPLING	3000#	2507 S.S.	-	-	PRESSURE TRANSMITTER
P2	1/2"	COUPLING	3000#	2507 S.S.	-	-	PRESSURE TRANSMITTER
R	2"	R.F. SLIP-ON	150#	2507 S.S.	SCH 40S	2507 S.S.	PRESSURE RELIEF NOZZLE
S1	1"	COUPLING	3000#	2507 S.S.	-	-	SPARE
S2	1"	COUPLING	3000#	2507 S.S.	-	-	SPARE
S3	1"	COUPLING	3000#	2507 S.S.	-	-	SPARE
S4	1"	COUPLING	3000#	2507 S.S.	-	-	SPARE
SG1	6"	SEE DRAWING SG-6-2205	-	-	-	-	SIGHT GLASS
SG2	6"	SEE DRAWING SG-6-2205	-	-	-	-	SIGHT GLASS
SG3	6"	SEE DRAWING SG-6-2205	-	-	-	-	SIGHT GLASS
SG4	6"	SEE DRAWING SG-6-2205	-	-	-	-	SIGHT GLASS
T	3/4"	WELD-IN THERMOWELL	-	2507 S.S.	-	-	TEMPERATURE GAUGE
V	32"	LAP-JOINT W/ STUB-END	150#	C.S.	1/4" THK	2507 S.S.	VAPOR EXIT NOZZLE



DETAIL NO. 3, PACKING HOLD DOWN CLIPS (6 PLACES)



DETAIL NO. 4, PACKING HOLD DOWN ASSEMBLY



DESIGN INFORMATION	
DESIGN CODE:	ASME LATEST CODE, LATEST ADDENDA
DESIGN PRESSURE:	50 psig AND FULL VACUUM
DESIGN TEMPERATURE:	400°F MATERIALS
WEIGHT EMPTY:	15,200 lb SIDES: 2507 S.S.
WEIGHT FULL OF WATER:	40,800 lb HEADS: 2507 S.S.
WEIGHT FULL OF GLYCERINE:	48,000 lb GASKETS: GARLOCK GYLON 3540
INTERIOR VOLUME:	3,100 gal. HYDRO TEST PRESSURE: PER CODE
FINISHES	
INTERIOR: 1 NA	CALC. #
EXTERIOR:	JOINT EFF. 0.70

No.	Revisions	Date	By	Designed By	Date Printed
0	ORIGINAL ISSUE	2-2-07	CIW		

CROWN IRON WORKS CO.
 MINNEAPOLIS, MINNESOTA 55440
TODD & SARGENT
 620 Arrowsmith Trail - Ames, Iowa 50010
 (515) 232-0442 - Fax: (515) 232-0682
 S.D. NUMBER 11476 CIW FILE No. 403760

REG
 SOY BIODIESEL
 -FOR-
 REG BIODIESEL
 ST. ROSE, LOUISIANA

INSTALLATION DRAWING
 V-425
 Job Number 20023 Drawing No. MEC-489 Rev. No. 0

115040