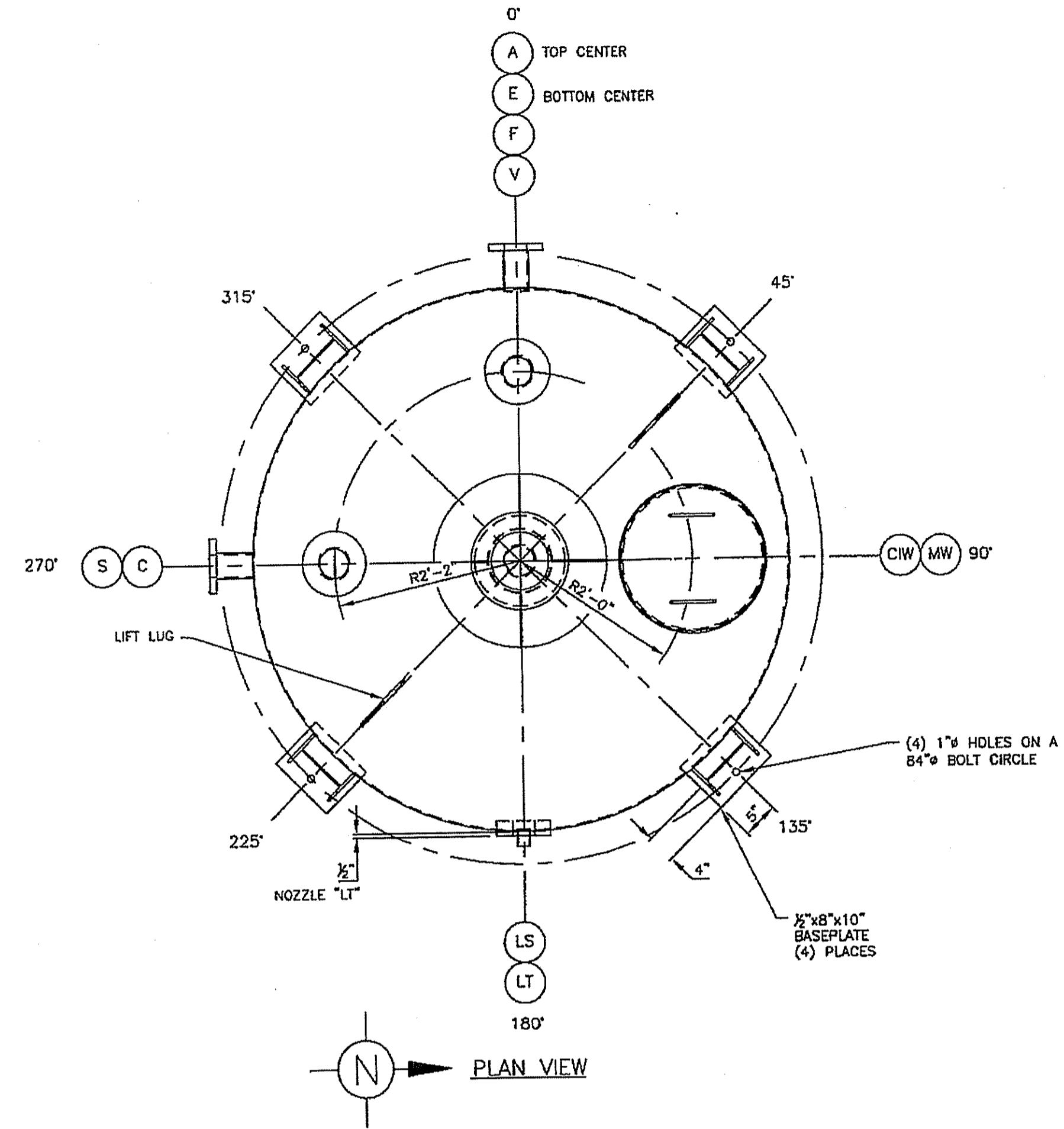


ELEVATION VIEW



PLAN VIEW

NOZZLE	SIZE	TYPE	FLANGE RATING	FLANGE MATERIAL	PIPE RATING	PIPE AND STUB-END MATERIAL	SERVICE
A	8"	R.F. SLIP-ON	150#	304 S.S.	SCH 40S	304 S.S.	AGITATOR
C	3"	R.F. SLIP-ON	150#	304 S.S.	SCH 10S	304 S.S.	CENTRIFUGE RETURN
E	4"	LAP JOINT W/ STUB-END	150#	C.S.	SCH 10S	304 S.S.	EFFLUENT
F	3"	R.F. SLIP-ON	150#	304 S.S.	SCH 10S	304 S.S.	FEED
LS	1"	FULL COUPLING THRD	3000#	304 S.S.	-	-	LEVEL SWITCH
LT	3"	PAD FLANGE	150#	304 S.S.	-	-	LEVEL TRANSMITTER
MW	20"	STUB-PIPE	-	-	3/16" PL	304 S.S.	MANWAY
S	3"	R.F. SLIP-ON	150#	304 S.S.	SCH 10S	304 S.S.	SPARE
V	3"	R.F. SLIP-ON	150#	304 S.S.	SCH 10S	304 S.S.	VENT
CIW	LARGE	-	-	-	-	-	NAMEPLATE

DESIGN INFORMATION			
DESIGN CODE:			
DESIGN PRESSURE:	ATMOSPHERIC		
DESIGN TEMPERATURE:	300°F		
WEIGHT EMPTY:	5,700 lb	VESSEL SHELL AND INTERNALS	SA240 304 S.S.
WEIGHT FULL OF WATER:	40,000 lb	SUPPORTS AND LIFT LUGS	A36 C.S.
WEIGHT OPERATING:		GASKETS:	NA
INTERIOR VOLUME:	530 cu ft	HYDRO TEST PRESSURE:	
INTERIOR FINISHES:		CALC. #	
EXTERIOR:	NA	JOINT EFF.	0.70

PROPRIETARY AND CONFIDENTIAL
DO NOT REPRODUCE, TRANSMIT OR DISCLOSE THIS
INFORMATION WITHOUT WRITTEN CONSENT OF
CROWN IRON WORKS COMPANY

No.	Revisions	Date	By	Designed By	Date Printed
0	ORIGINAL ISSUE	3-9-07	CIW		

CROWN IRON WORKS CO.
MINNEAPOLIS, MINNESOTA 55440
NOTICE: © 2001 CROWN IRON WORKS COMPANY
THIS DRAWING AND INFORMATION ARE THE PROPERTY OF CROWN
IRON WORKS COMPANY AND ARE NOT TO BE COPIED OR MISUSED.
NOT RESPONSIBLE BEYOND OUR OWN WORK
S.O. NUMBER 11475 | CIW FILE No. 403844

TODD & SARGENT
620 Arrossmith Trail - Ames, Iowa 50010
(515) 232-0442 - Fax: (515) 232-0682



BIODIESEL FACILITY
-FOR-
RENEWABLE ENERGY GROUP INC.
ST. ROSE, LA.

INSTALLATION DRAWING V-210			
Job Number	Drawing No.	Rev. No.	
20023	MEC450	0	

#115010