



Customer Document title:

Mechanical Seal Drawing

Flowserve Document title: **Mechanical Seal Drawing**Flowserve Document No.: **1400944-015-5800-01**Document Revision No.: **0**Flowserve Order No.: **1400944**Flowserve Serial No.: **1400944CHP015A/D**Pump Type/Size: **MARK 3 STANDARD / 2K6X4-10HRV**Quantity: **4**Customer Name: **DESMET BALLESTRA NORTH AMERICA****PROJECT - WORPAR****ITEM NBR - P650/81C.1-1-P650/81C.1-2****P650/81C.2-1-P650/81C.2-2****TYPE - ASSY****eB NBR - 100212987.001****DATE - 22.07.2022**

Customer Tag No: **DESMET TAG#: P650/81C.1-1, CUSTOMER TAG#: 19-P-777A, DESMET TAG#: P650/81C.1-2, CUSTOMER TAG#: 19-P-777B, DESMET TAG#: P650/81C.2-1, CUSTOMER TAG#: 19-P-877A, DESMET TAG#: P650/81C.2-2, CUSTOMER TAG#: 19-P-877B**

Customer PO No.: **28493**End User: **DESMET BALLESTRA NORTH AMERICA**

Please complete and return:

Document Reviewed by:

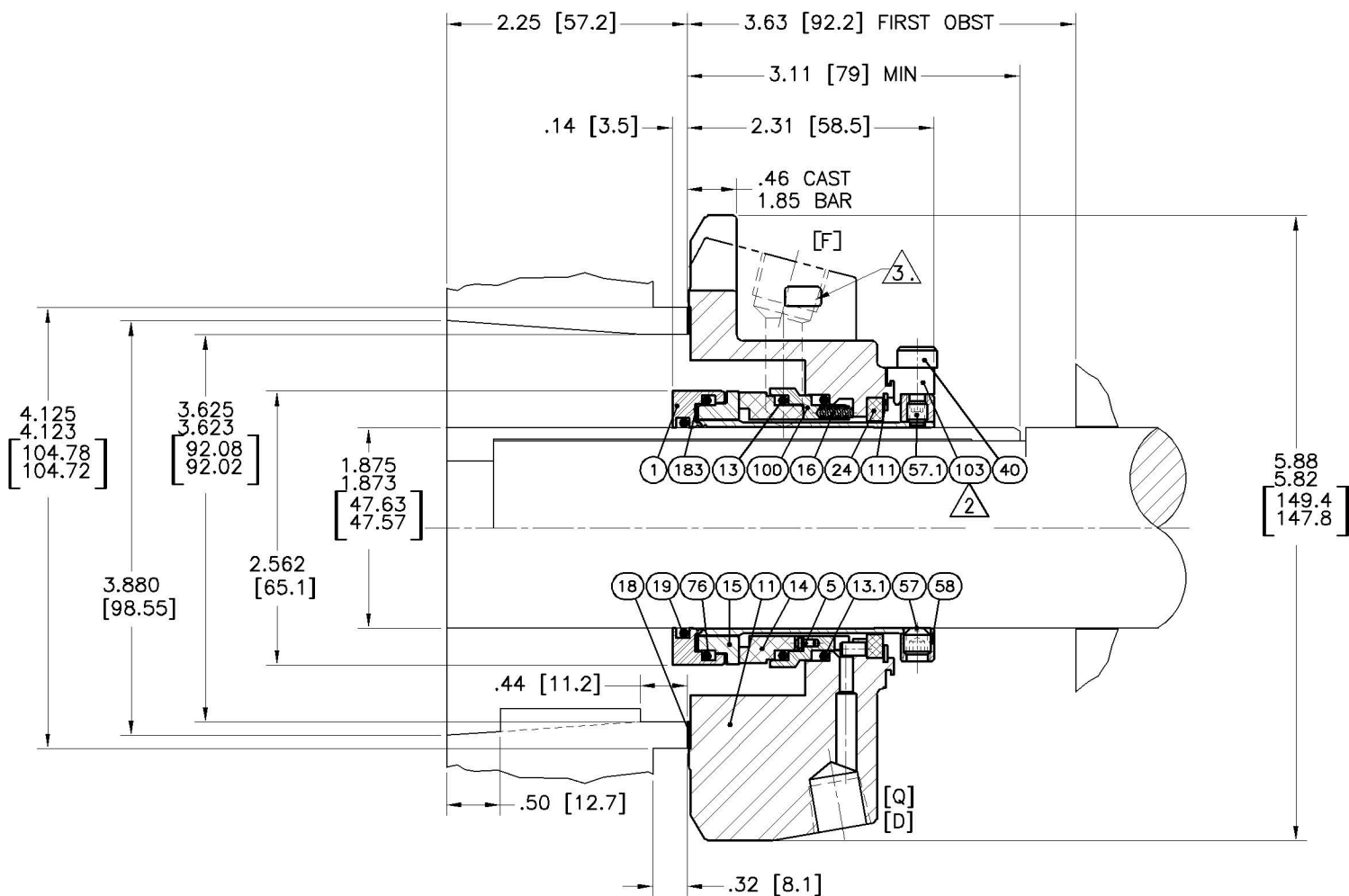
Document Reviewed date:

- ☐ **APPROVED. NO ACTION REQUIRED**
☐ **APPROVED. RE-SUBMIT AS FINAL**
☐ **APPROVED WITH COMMENTS. DOCUMENT WILL BE MODIFIED AND RESUBMITTED AS FINAL**
☐ **REJECTED. CORRECT AND RE-SUBMIT FOR APPROVAL**
☐ **FOR INFORMATION. REVIEW NOT REQUIRED**
☐ **AS-BUILT**

- Return any documents sent for review with your comments by the stated return date. All documents not returned two weeks after requested Return date will be considered Approved, no action.
- Purchaser's comments and/or corrections within the scope of contract will be made on the first completed document submitted by Flowserve Corp. and returned.
- Corrections, alterations, additions and/or modifications outside scope of contract or made after first submittal may require an additional engineering service charge.
- Items conditionally approved or with deferred approval by purchaser must be specifically stated otherwise delivery may be affected.

Rev	Revision Description	Released	Release Date
	Final		15-Sep-21

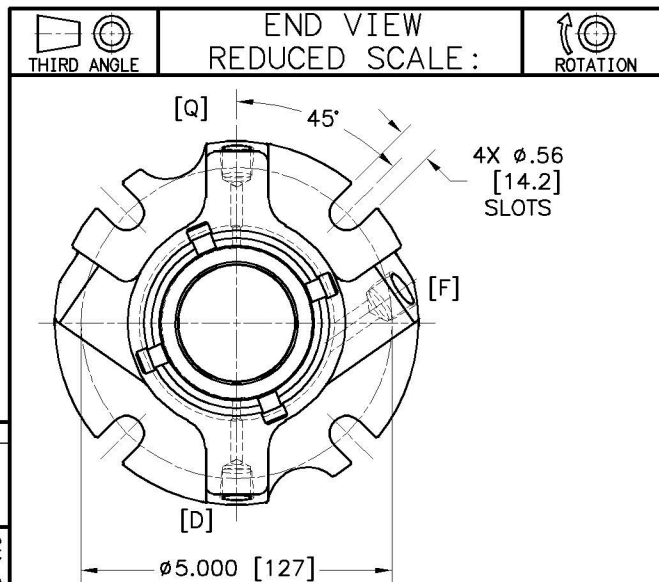
NO: 2D-422627 REV: A



NOTES:


- SEE INSTALLATION INSTRUCTIONS FOR REQUIRED MECHANICAL CONDITION OF EQUIPMENT.
- REMOVE SETTING DEVICES AFTER SEAL INSTALLATION.
- PERMANENT MARK SEAL TYPE, SEAL SIZE, AND GLAND MATERIAL.
- PORT PLUGS PROVIDED BY PUMP MANUFACTURER TO SUPPORT APPLICABLE PIPING PLAN(S).
- USE ONE WASHER ON EACH STUD BETWEEN THE GLAND RING AND THE NUT. WASHERS ARE TO BE SUPPLIED BY JCI WITH EACH COMPLETE SEAL.

4 [F] FLUSH 3/8 NPT
[Q] QUENCH 1/4 NPT
[D] DRAIN 1/4 NPT



BILL OF MATERIAL NO: C2CPX1875ECXVB					1 SUGGESTED SPARE PARTS 2 CODE/BSC[X]/OFF STD[W]	
NO	PARTCODE	QTY	DESCRIPTION	MATERIAL	1	2
1	C0011866DB	1	SLEEVE ASSEMBLY	316		X
5	C0012107NL	3	PIN SQ. HEAD	ALLOY C-276	*	X
11	C0011308DB	1	GLAND SINGLE-CW	316		X
13	568141GU	1	SEAT GASKET	FLUOROELASTOMER	*	X
13.1	568141GU	1	SEAT GASKET	FLUOROELASTOMER	*	X
14	C0011928KR3	1	STATIONARY FACE	CARBON (FDA GRADE)	*	X
15	K23C1875C33	1	ROTATING FACE	SILICON CARBIDE	*	X
16	MIAX88403CM	14	COIL SPRING	ALLOY C-276	*	X
18	MYCG4110AAC	1	GLAND GASKET	PTFE, BaSO4 FILLED (FDA GRADE)	*	X
19	568134GU	1	SLEEVE GASKET	FLUOROELASTOMER	*	X
24	C0010316KR3	1	GLAND BUSHING	CARBON (FDA GRADE)	*	X
40	C0012104CK	4	SHCS 10-24X3/8	18-8	*	X
57	4R0426X902	4	SSCP 1/4-20X1/4	17-4 H900	*	X
57.1	MLA36788233	2	SSQDP 10-24X7/32	ALLOY C-276	*	X
58	C0010378DB	1	DRIVE COLLAR	316		X
76	568141GU	1	ROT. FACE GASKET	FLUOROELASTOMER	*	X
100	C0011990DB	1	STATIONARY FACE SUPPORT	316	*	X
103	C0012106CK	4	SETTING DEVICE	18-8	*	X
111	UR243CK	1	SNAP RING	18-8	*	X
183	C0012052QF	1	VIBRATION DAMPER	FLEXIBLE GRAPHITE	*	X

Desmet Tag	WEP Tag
P650/81C.1-1	19-P-777A
P650/81C.1-2	19-P-777B
P650/81C.2-1	19-P-877A
P650/81C.2-2	19-P-877B

SEAL TYPE: ISC2-PX		SEAL SIZE: 1.875	
SEAL CONFIG: SINGLE INSIDE-CARTRIDGE			
MATL CODE: 5Z4T			
EQUIP MFR: FLOWERVE		INSTR: FIS190	
EQUIP MODEL: MK II III GR 2K FML			
EQUIP DWG: CY55329A, CY55362A, CY55363A			
 Flow Solutions Group		SCALE: TO SCALE	
		DRAWN: SRKUMAR	
		DATE: 14-JUL-2005	
		CHKD: VSUBRAMANIAM	
		APPVD:	
JOB NO: 2D-422627		PARTS LIST NO: L0000060	
		REF DWG:	
		FORM DWG:	
		DRAWING NO: 2D-422627	
		SHEET: 1 OF 1	
		REV: A	

REVISION: A DATE: 15-MAY-2011 BY: MNATARAJAN CHKD: MNATARAJAN ECN NO: 11-6240
REVISION NOTE: BM NUMBER WAS CSCPX1875ECXVB, SEAL TYPE WAS ISC1PX, DRAWING UPDATED TO NEW BORDER AND CURRENT ENGINEERING STANDARD.

THIS DRAWING AND ANY DESIGN, DEVELOPMENT, INVENTION OR COPYRIGHT WHICH IT MAY EMBODY OR REPRESENT ARE THE PROPERTY OF FLOWERVE CORPORATION. THIS DRAWING MAY NOT BE REPRODUCED, NOR ANY SUBJECT MATTER SHOWN HEREIN MAY BE MANUFACTURED, WITHOUT WRITTEN PERMISSION FROM AN AUTHORIZED AGENT OF FLOWERVE CORPORATION.

DIM'S ARE REF UNLESS SPECIFIED OTHERWISE.
DIM'S IN: INCHES [MM]

C/A2 JULY 2009