



Customer Document title:

Mechanical Seal Drawing

Flowserve Document title: **Mechanical Seal Drawing**Flowserve Document No.: **1400944-013-5800-01**Document Revision No.: **0**Flowserve Order No.: **1400944**Flowserve Serial No.: **1400944CHP013A/D**Pump Type/Size: **MARK 3 STANDARD / 2K4X3-10RV**Quantity: **4**Customer Name: **DESMET BALLESTRA NORTH AMERICA****PROJECT - WORPAR****ITEM NBR - PW582D.1/1-PW582D.2/1****PW582D.2/1-PW582D.2/2****TYPE - ASSY****eB NBR - 100212967.001****DATE - 22.07.2022**

Customer Tag No: **DESMET TAG#: PW582D.1/1, CUSTOMER TAG#: 19-P-773A, DESMET TAG#: PW582D.1/2, CUSTOMER TAG#: 19-P-773B, DESMET TAG#: PW582D.2/1, CUSTOMER TAG#: 19-P-873A, DESMET TAG#: PW582D.2/2, CUSTOMER TAG#: 19-P-873B**

Customer PO No.: **28493**End User: **DESMET BALLESTRA NORTH AMERICA**

Please complete and return:

Document Reviewed by:

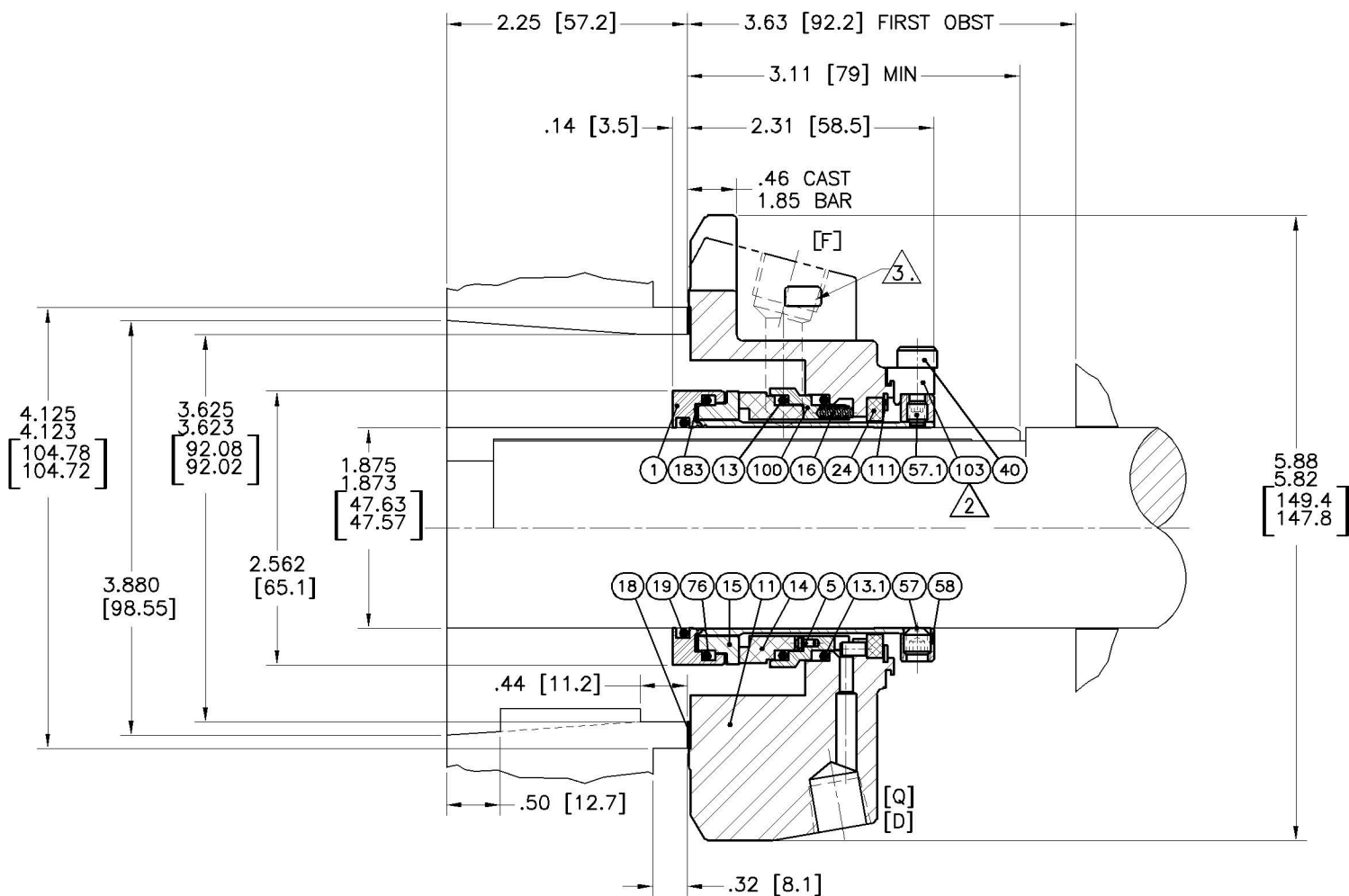
Document Reviewed date:

- ☐ **APPROVED. NO ACTION REQUIRED**
☐ **APPROVED. RE-SUBMIT AS FINAL**
☐ **APPROVED WITH COMMENTS. DOCUMENT WILL BE MODIFIED AND RESUBMITTED AS FINAL**
☐ **REJECTED. CORRECT AND RE-SUBMIT FOR APPROVAL**
☐ **FOR INFORMATION. REVIEW NOT REQUIRED**
☐ **AS-BUILT**

- Return any documents sent for review with your comments by the stated return date. All documents not returned two weeks after requested Return date will be considered Approved, no action.
- Purchaser's comments and/or corrections within the scope of contract will be made on the first completed document submitted by Flowserve Corp. and returned.
- Corrections, alterations, additions and/or modifications outside scope of contract or made after first submittal may require an additional engineering service charge.
- Items conditionally approved or with deferred approval by purchaser must be specifically stated otherwise delivery may be affected.

Rev	Revision Description	Released	Release Date
	Final		15-Sep-21

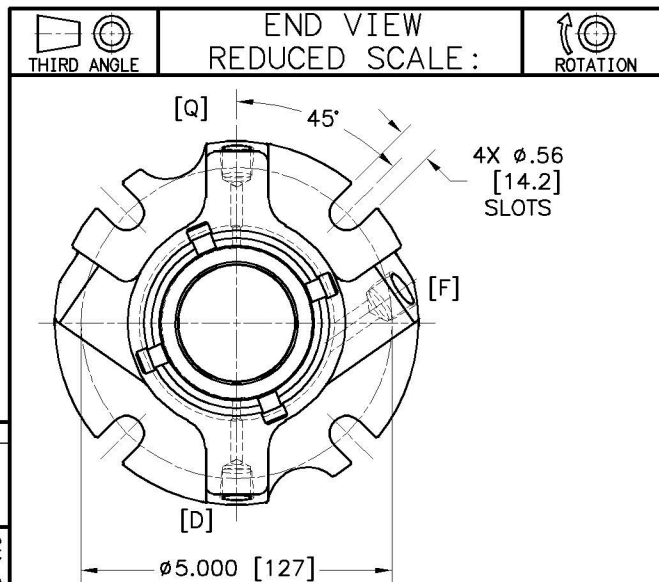
NO: 2D-422627 REV: A



NOTES:

1. SEE INSTALLATION INSTRUCTIONS FOR REQUIRED MECHANICAL CONDITION OF EQUIPMENT.
2. REMOVE SETTING DEVICES AFTER SEAL INSTALLATION.
3. PERMANENT MARK SEAL TYPE, SEAL SIZE, AND GLAND MATERIAL.
4. PORT PLUGS PROVIDED BY PUMP MANUFACTURER TO SUPPORT APPLICABLE PIPING PLAN(S).
5. USE ONE WASHER ON EACH STUD BETWEEN THE GLAND RING AND THE NUT. WASHERS ARE TO BE SUPPLIED BY JCI WITH EACH COMPLETE SEAL.

△ [F] FLUSH 3/8 NPT
△ [Q] QUENCH 1/4 NPT
△ [D] DRAIN 1/4 NPT



BILL OF MATERIAL NO: C2CPX1875ECXVB					1 SUGGESTED SPARE PARTS 2 CODE/BSC [X] / OFF STD [W]	
NO	PARTCODE	QTY	DESCRIPTION	MATERIAL	1	2
1	C0011866DB	1	SLEEVE ASSEMBLY	316		X
5	C0012107NL	3	PIN SQ. HEAD	ALLOY C-276	*	X
11	C0011308DB	1	GLAND SINGLE-CW	316		X
13	568141GU	1	SEAT GASKET	FLUROELASTOMER	*	X
13.1	568141GU	1	SEAT GASKET	FLUROELASTOMER	*	X
14	C0011928KR3	1	STATIONARY FACE	CARBON (FDA GRADE)	*	X
15	K23C1875C33	1	ROTATING FACE	SILICON CARBIDE	*	X
16	MIAX88403CM	14	COIL SPRING	ALLOY C-276	*	X
18	MYCG4110AAC	1	GLAND GASKET	PTFE, BaSO4 FILLED (FDA GRADE)	*	X
19	568134GU	1	SLEEVE GASKET	FLUROELASTOMER	*	X
24	C0010316KR3	1	GLAND BUSHING	CARBON (FDA GRADE)	*	X
40	C0012104CK	4	SHCS 10-24X3/8	18-8	*	X
57	4R0426X902	4	SSCP 1/4-20X1/4	17-4 H900	*	X
57.1	MLA36788233	2	SSQDP 10-24X7/32	ALLOY C-276	*	X
58	C0010378DB	1	DRIVE COLLAR	316		X
76	568141GU	1	ROT. FACE GASKET	FLUROELASTOMER	*	X
100	C0011990DB	1	STATIONARY FACE SUPPORT	316	*	X
103	C0012106CK	4	SETTING DEVICE	18-8	*	X
111	UR243CK	1	SNAP RING	18-8	*	X
183	C0012052QF	1	VIBRATION DAMPER	FLEXIBLE GRAPHITE	*	X

DESMET TAG	WEP TAG
PW582D.1/1	19-P-773A
PW582D.1/2	19-P-773B
PW582D.2/1	19-P-873A
PW582D.2/2	19-P-873B

SEAL TYPE: ISC2-PX SEAL SIZE: 1.875
SEAL CONFIG: SINGLE INSIDE-CARTRIDGE
MATL CODE: 5Z4T
EQUIP MFR: FLOWERVE INSTR: FIS190
EQUIP MODEL: MK II III GR 2K FML
EQUIP DWG: CY55329A, CY55362A, CY55363A

FLOWERVE		SCALE: TO SCALE	PARTS LIST NO: L0000060
Flow Solutions Group		DRAWN: SRKUMAR	REF DWG:
		DATE: 14-JUL-2005	FORM DWG:
		CHKD: VSUBRAMANIAM	DRAWING NO: SHEET: 1 of 1 REV: A
		APPVD:	2D-422627
		JOB NO: 2D-422627	

THIS DRAWING AND ANY DESIGN, DEVELOPMENT, INVENTION OR COPYRIGHT WHICH IT MAY EMBODY OR REPRESENT ARE THE PROPERTY OF FLOWERVE CORPORATION. THIS DRAWING MAY NOT BE REPRODUCED, NOR ANY SUBJECT MATTER SHOWN HEREIN MAY BE MANUFACTURED, WITHOUT WRITTEN PERMISSION FROM AN AUTHORIZED AGENT OF FLOWERVE CORPORATION.

DIM'S ARE REF UNLESS SPECIFIED OTHERWISE.
DIM'S IN: INCHES [MM]

C/A2
JULY
2009