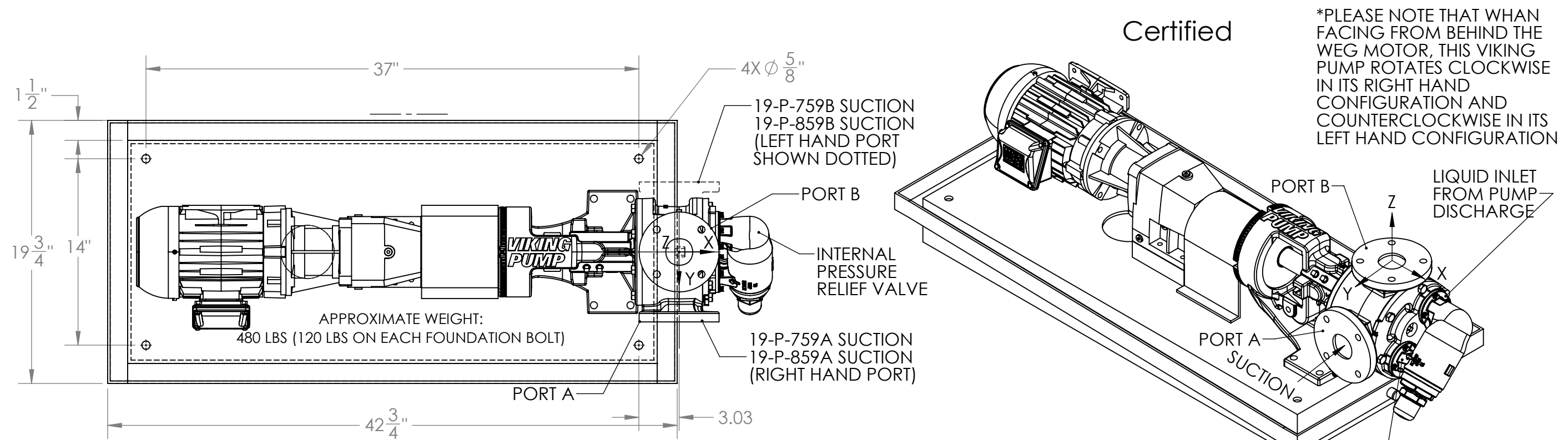
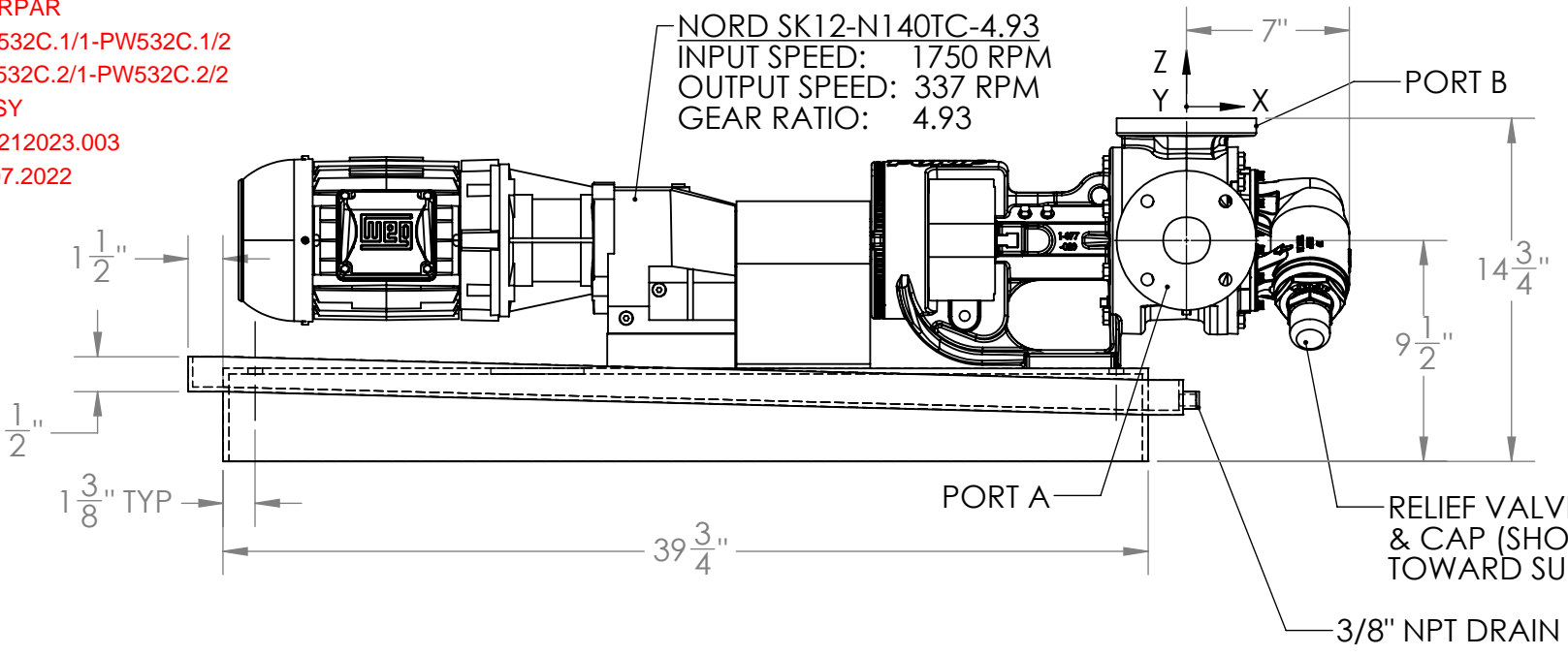


B



PROJECT - WORPAR
ITEM NBR - PW532C.1/1-PW532C.1/2
PW532C.2/1-PW532C.2/2
TYPE - ASSY
eB NBR - 100212023.003
DATE - 21.07.2022



ALLOWABLE NOZZLE LOADING (FORCES & MOMENTS)
2" ASME CLASS 150 FF (FLAT FACE)

PUMP SIZE (FLANGE SIZE)	PORT A						PORT B					
	Px	Py	Pz	Mx	My	Mz	Px	Py	Pz	Mx	My	Mz
K (2")	420	420	420	250	250	250	420	420	420	250	250	250
	1870	1870	1870	350	350	350	1870	1870	1870	350	350	350

LOADING COORDINATE SYSTEM:
X: PARALLEL TO PUMP SHAFT
Y: HORIZONTAL, PERPENDICULAR TO PUMP SHAFT
Z: VERTICAL, PERPENDICULAR TO PUMP SHAFT

P: FORCES (LBF / N)
M: MOMENTS (FT-LBF / N-m)

ITEM NUMBER	WORLD ENERGY TAGS
PW532C.1/1	19-P-759A
PW532C.1/2	19-P-759B
PW532C.2/1	19-P-859A
PW532C.2/2	19-P-859B

A



ADDRESS: 121 ROYAL DR. FOREST PARK, GA 30297
PHONE #: 404-363-6000
FAX #: 404-361-8579
SERVICE #: 404-647-0986

PROPRIETARY AND CONFIDENTIAL
THE INFORMATION CONTAINED IN THIS
DRAWING IS THE SOLE PROPERTY OF PYE-BARKER
ENGINEERED SOLUTIONS. ANY REPRODUCTION IN
PART OR AS A WHOLE WITHOUT THE WRITTEN
PERMISSION OF PYE-BARKER ENGINEERED SOLUTIONS
IS PROHIBITED.

<u>EQUIPMENT SETUP</u>		NAME: DESMET BALLESTRA			DRAWN BY: TC		CHECKED BY: DL			
MAKE: VIKING		JOB #: 46215	PO #: PO-00028544/WORPAR		TITLE: K4127A 1.5HP WASTE OIL PUMP					
MODEL: K4127A		SALES REP: RON WRIGHT								
PART #:		REV #	<u>DESCRIPTION</u>						<u>DATE</u>	
RATING: 23 GPM, 36 PSI		01	Removed information. Edited dimension						3/15/22	
MOTOR: WEG		02								
HP / RPM: 1.5HP/1750		03			SIZE	DWG. NO.		REV		
VOLTAGE: 3/60/208-230/460		04			B	EN-DM-P-K4127-002		3		
						SCALE: 1:8	WEIGHT:	SHEET 1 OF 1		

B

A