



Customer Document title:

Mechanical Seal Drawing

Flowserve Document title: **Mechanical Seal Drawing**Flowserve Document No.: **1400944-001-5800-01**Document Revision No.: **A**Flowserve Order No.: **1400944**Flowserve Serial No.: **1400944CHP001A/D**Pump Type/Size: **MARK 3 STANDARD / 2K4X3-10RV**Quantity: **4**Customer Name: **DESMET BALLESTRA NORTH AMERICA**

PROJECT - WORPAR

ITEM NBR - PW503AC.1/1-PW503AC.1/2

PW503AC.2/1-PW503AC.2/2

TYPE - ASSY

eB NBR - 100212847.001

DATE - 10.02.2022

Customer Tag No: **DESMET TAG#PW503AC.1/1 - World Energy#: 19-P-750A, DESMET TAG#PW503AC.1/2 - World Energy#: 19-P-750B, DESMET TAG#: PW503AC.2/1 - World Energy#: 19-P-850A, DESMET TAG#: PW503AC.2/2, World Energy#: 19-P-850B**

Customer PO No.: **28493**End User: **DESMET BALLESTRA NORTH AMERICA**

Please complete and return:

Document Reviewed by:

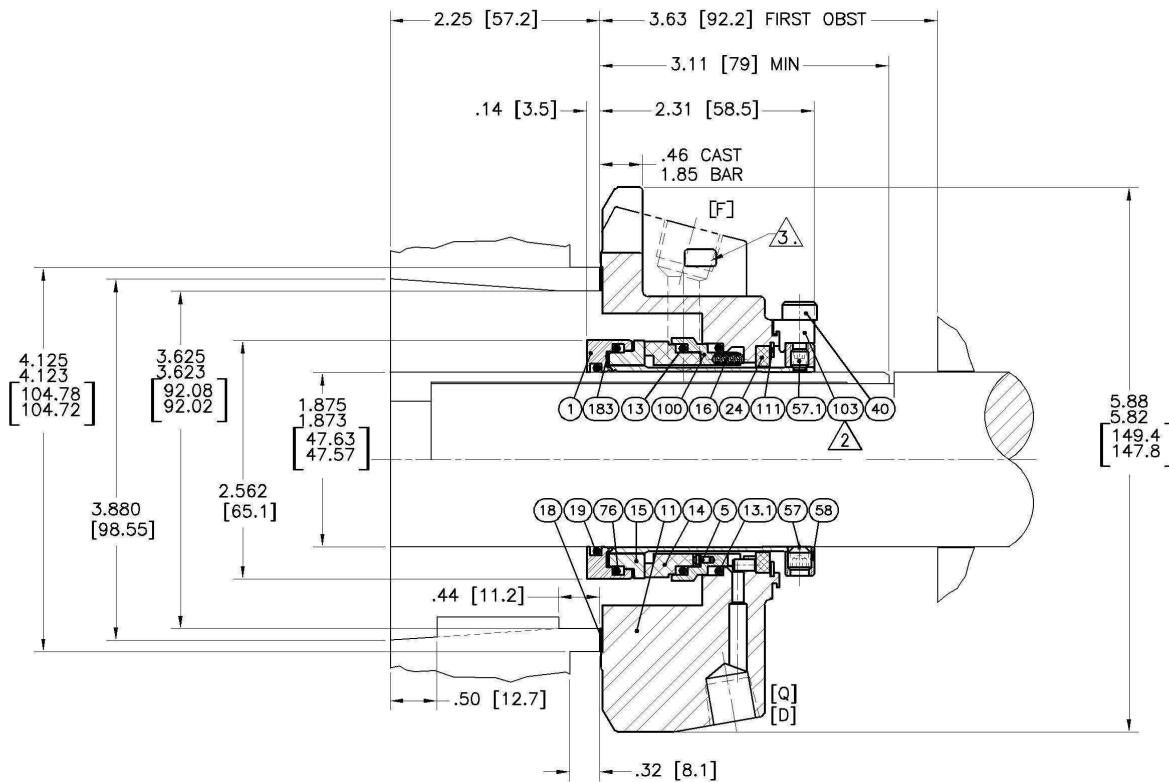
Document Reviewed date:

- ☐ **APPROVED. NO ACTION REQUIRED**
☐ **APPROVED. RE-SUBMIT AS FINAL**
☐ **APPROVED WITH COMMENTS.** DOCUMENT WILL BE MODIFIED AND RESUBMITTED AS FINAL.
☐ **REJECTED.** CORRECT AND RE-SUBMIT FOR APPROVAL.
☐ **FOR INFORMATION.** REVIEW NOT REQUIRED
☐ **AS-BUILT**

- Return any documents sent for review with your comments by the stated return date. All documents not returned two weeks after requested Return date will be considered Approved, no action.
- Purchaser's comments and/or corrections within the scope of contract will be made on the first completed document submitted by Flowserve Corp. and returned.
- Corrections, alterations, additions and/or modifications outside scope of contract or made after first submittal may require an additional engineering service charge.
- Items conditionally approved or with deferred approval by purchaser must be specifically stated otherwise delivery may be affected.

Rev	Revision Description	Released	Release Date
	For Information	Morris, Tamika	04-Feb-22

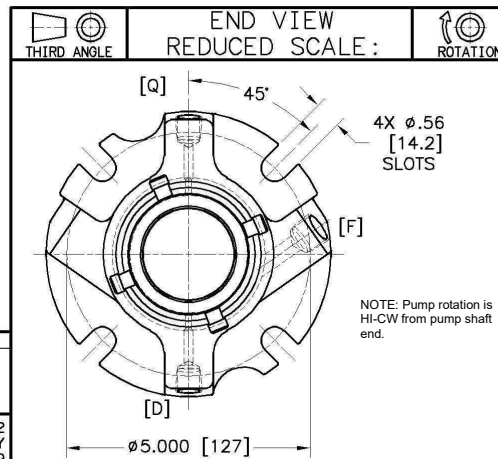
NO: 2D-422627 REV: A



NOTES:

- SEE INSTALLATION INSTRUCTIONS FOR REQUIRED MECHANICAL CONDITION OF EQUIPMENT.
- REMOVE SETTING DEVICES AFTER SEAL INSTALLATION.
- PERMANENT MARK SEAL TYPE, SEAL SIZE, AND GLAND MATERIAL.
- PORT PLUGS PROVIDED BY PUMP MANUFACTURER TO SUPPORT APPLICABLE PIPING PLAN(S).
- USE ONE WASHER ON EACH STUD BETWEEN THE GLAND RING AND THE NUT. WASHERS ARE TO BE SUPPLIED BY JCI WITH EACH COMPLETE SEAL.

△ [F] FLUSH 3/8 NPT
△ [Q] QUENCH 1/4 NPT
△ [D] DRAIN 1/4 NPT



REVISION: A [DATE: 15-MAY-2011] BY: MNATARAJAN [CHKD: MNATARAJAN] [ECN NO: 11-6240]
REVISION NOTE: BM NUMBER WAS C2CPX1875ECXVB, SEAL TYPE WAS ISC1PX, DRAWING UPDATED TO NEW BORDER AND CURRENT ENGINEERING STANDARD.

THIS DRAWING AND ANY DESIGN, DEVELOPMENT, INVENTION OR COPYRIGHT WHICH IT MAY EMBODY OR REPRESENT ARE THE PROPERTY OF FLOWERVE CORPORATION. THIS DRAWING MAY NOT BE REPRODUCED, NOR ANY SUBJECT MATTER SHOWN HEREIN MAY BE MANUFACTURED, WITHOUT WRITTEN PERMISSION FROM AN AUTHORIZED AGENT OF FLOWERVE CORPORATION.

DIM'S ARE REF UNLESS SPECIFIED OTHERWISE.
DIM'S IN: INCHES [MM]
C/A2 JULY 2009

BILL OF MATERIAL NO: C2CPX1875ECXVB

1 SUGGESTED SPARE PARTS
2 CODE/BSC [X] /OFF STD [W]

NO	PARTCODE	QTY	DESCRIPTION	MATERIAL	1	2
1	C0011866DB	1	SLEEVE ASSEMBLY	316		X
5	C0012107NL	3	PIN SQ. HEAD	ALLOY C-276	*	X
11	C0011308DB	1	GLAND SINGLE-CW	316		X
13	568141GU	1	SEAT GASKET	FLUOROELASTOMER	*	X
13.1	568141GU	1	SEAT GASKET	FLUOROELASTOMER	*	X
14	C0011928KR3	1	STATIONARY FACE	CARBON (FDA GRADE)	*	X
15	K23C1875C33	1	ROTATING FACE	SILICON CARBIDE	*	X
16	MIAX88403CM	14	COIL SPRING	ALLOY C-276	*	X
18	MYCG4110AAC	1	GLAND GASKET	PTFE, BaSO4 FILLED (FDA GRADE)	*	X
19	568134GU	1	SLEEVE GASKET	FLUOROELASTOMER	*	X
24	C0010316KR3	1	GLAND BUSHING	CARBON (FDA GRADE)	*	X
40	C0012104CK	4	SHCS 10-24X3/8	18-8	*	X
57	4R0426X902	4	SSCP 1/4-20X1/4	17-4 H900	*	X
57.1	MLA36788233	2	SSQDP 10-24X7/32	ALLOY C-276	*	X
58	C0010378DB	1	DRIVE COLLAR	316	*	X
76	568141GU	1	ROT. FACE GASKET	FLUOROELASTOMER	*	X
100	C0011990DB	1	STATIONARY FACE SUPPORT	316	*	X
103	C0012106CK	4	SETTING DEVICE	18-8	*	X
111	UR243CK	1	SNAP RING	18-8	*	X
183	C0012052QF	1	VIBRATION DAMPER	FLEXIBLE GRAPHITE	*	X

DESMET TAG#: PW503AC.1/1 - WORLD ENERGY TAG#: 19-P-750A,
DESMET TAG#: PW503AC.1/2 - WORLD ENERGY TAG#: 19-P-750B,
DESMET TAG#: PW503AC.2/1 - WORLD ENERGY TAG#: 19-P-850A,
DESMET TAG#: PW503AC.2/2, WORLD ENERGY TAG#: 19-P-850B

SEAL TYPE: ISC2-PX SEAL SIZE: 1.875

SEAL CONFIG: SINGLE INSIDE-CARTRIDGE

MATL CODE: 5Z4T

EQUIP MFR: FLOWERVE

INSTR: FIS190

EQUIP MODEL: MK II III GR 2K FML

EQUIP DWG: CY55329A, CY55362A, CY55363A

FLOWERVE
Flow Solutions Group

SCALE: TO SCALE

PARTS LIST NO: L0000060

DRAWN: SRKUMAR

REF DWG:

DATE: 14-JUL-2005

FORM DWG:

CHKD: VSUBRAMANIAM

DRAWING NO: SHEET: 1 OF 1 REV:

APPVD:

JOB NO: 2D-422627

2D-422627 Page 1 of 1 A