



GENERAL ARRANGEMENT DRAWING (GAD)

CLIENT	:	Air Products Manufacturing LLC
PROJECT NAME/NO.	:	WEP Renewables
CLIENT PO NO	:	4505608737
HMD DOCUMENT NO	:	HMD-4505608737-B01-01
CLIENT DOCUMENT NO	:	EN207124-SNDYN-9V3-00037
HMD PUMP NO	:	839915
EQUIPMENT TAG NO	:	19-P-780

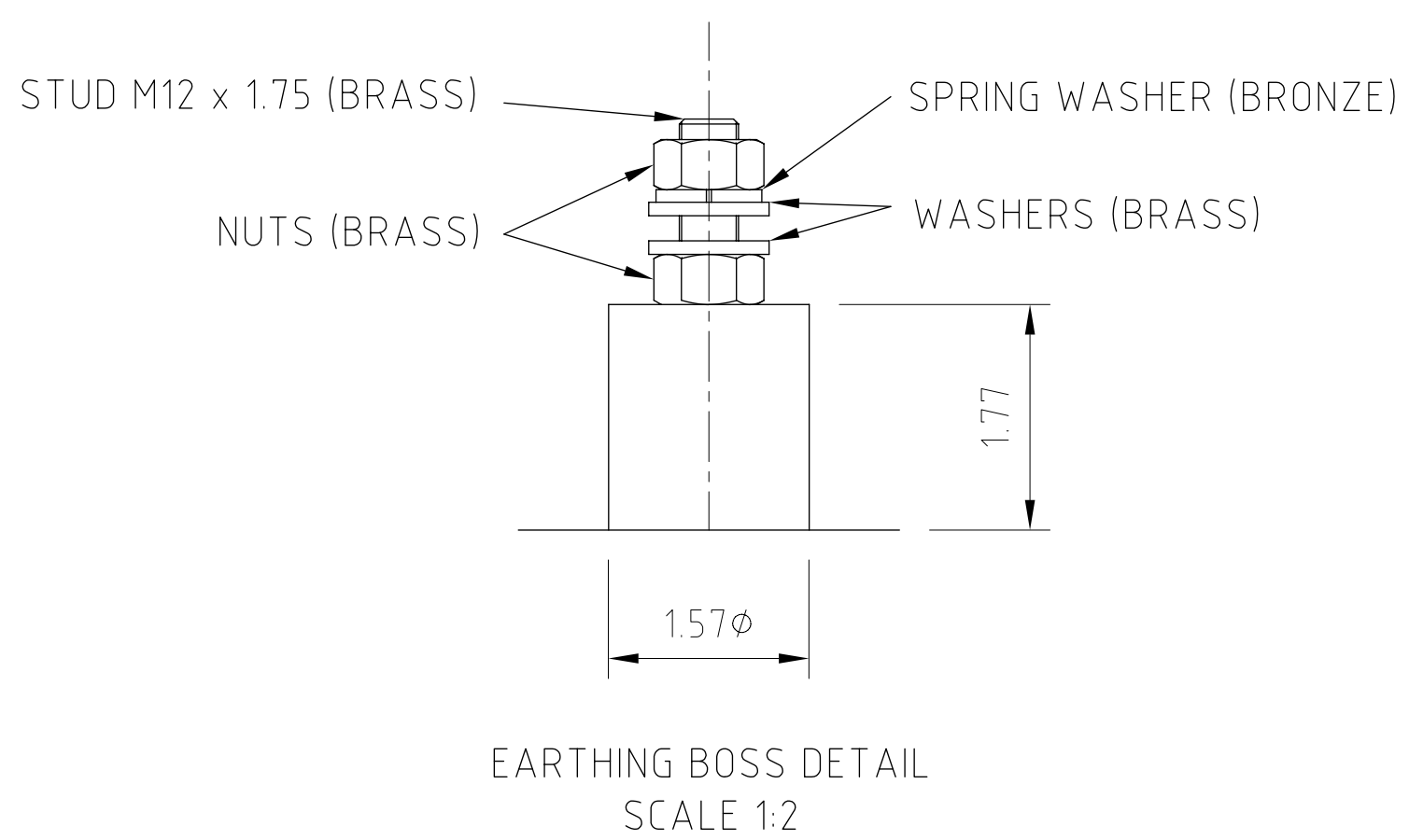
REV	DATE	DESCRIPTION	PREPARED BY	CHECKED BY	APPROVED BY
2	21/10/2022	ISSUE FOR REVIEW	JS	ARM	AFS
1	31/08/2022	ISSUE FOR REVIEW	KCM	JF	AFS
0	11/03/2022	ISSUE FOR REVIEW	KCM	ARM	AFS

NOTE:



RESOLUTION SHEET

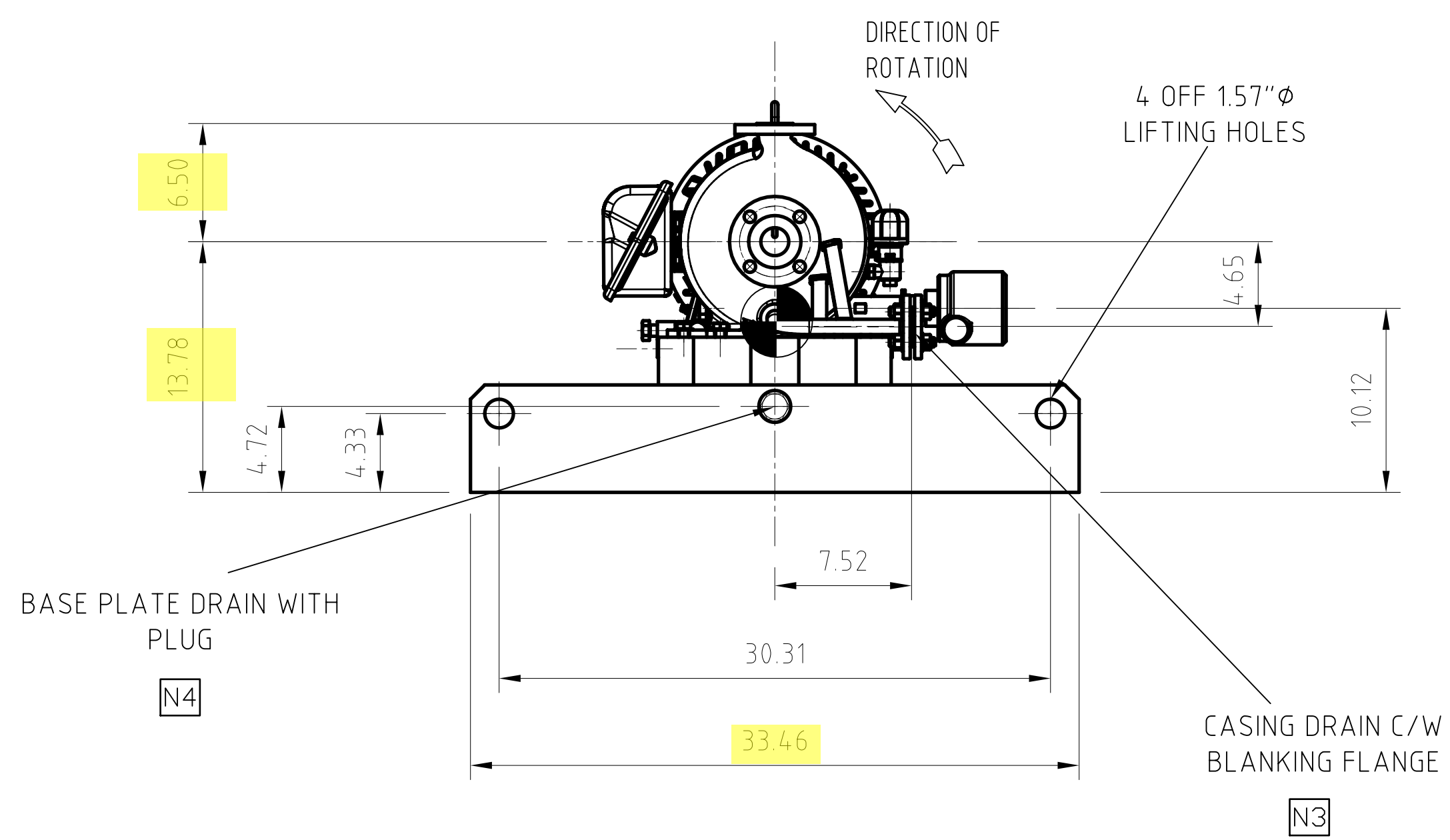
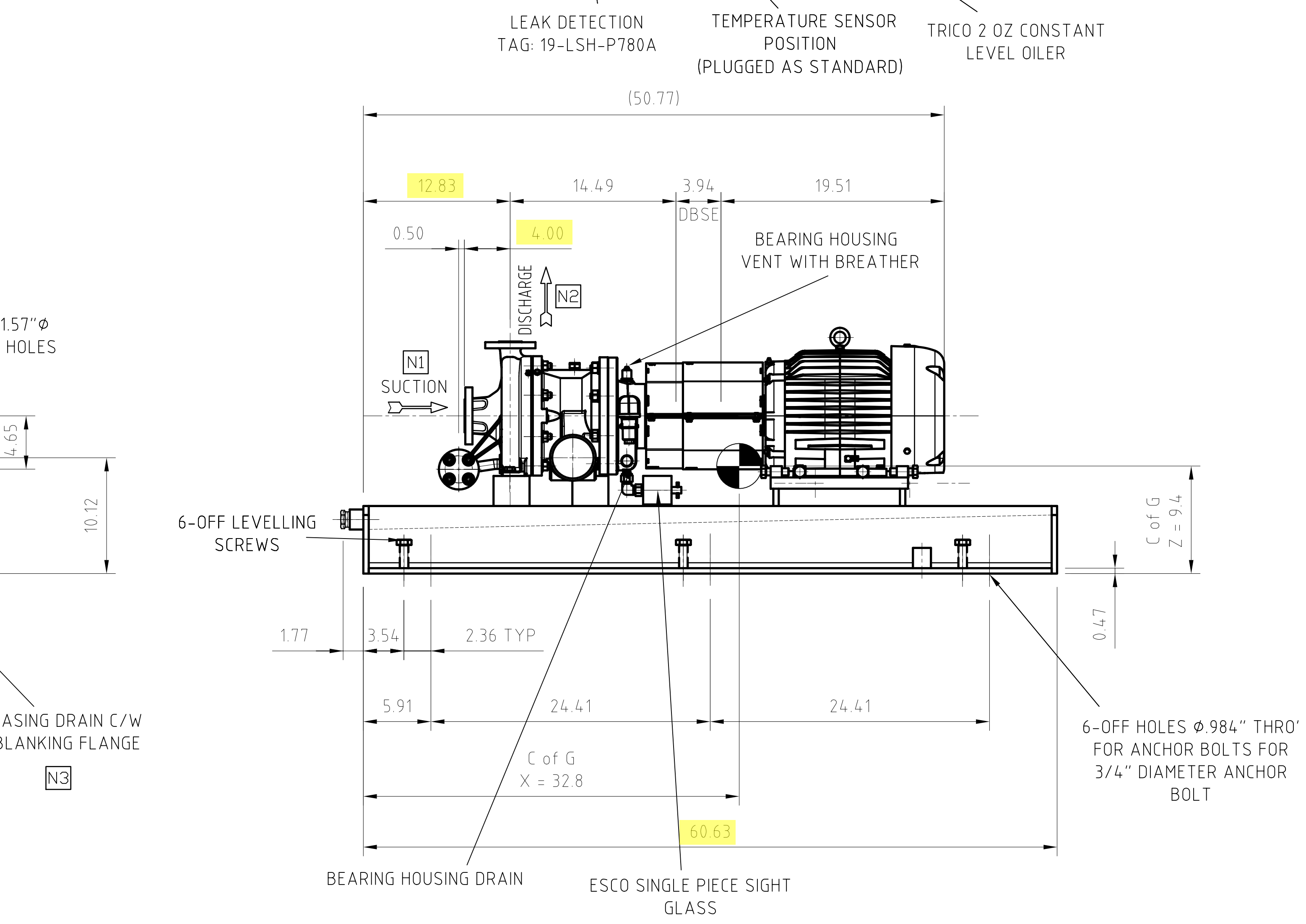
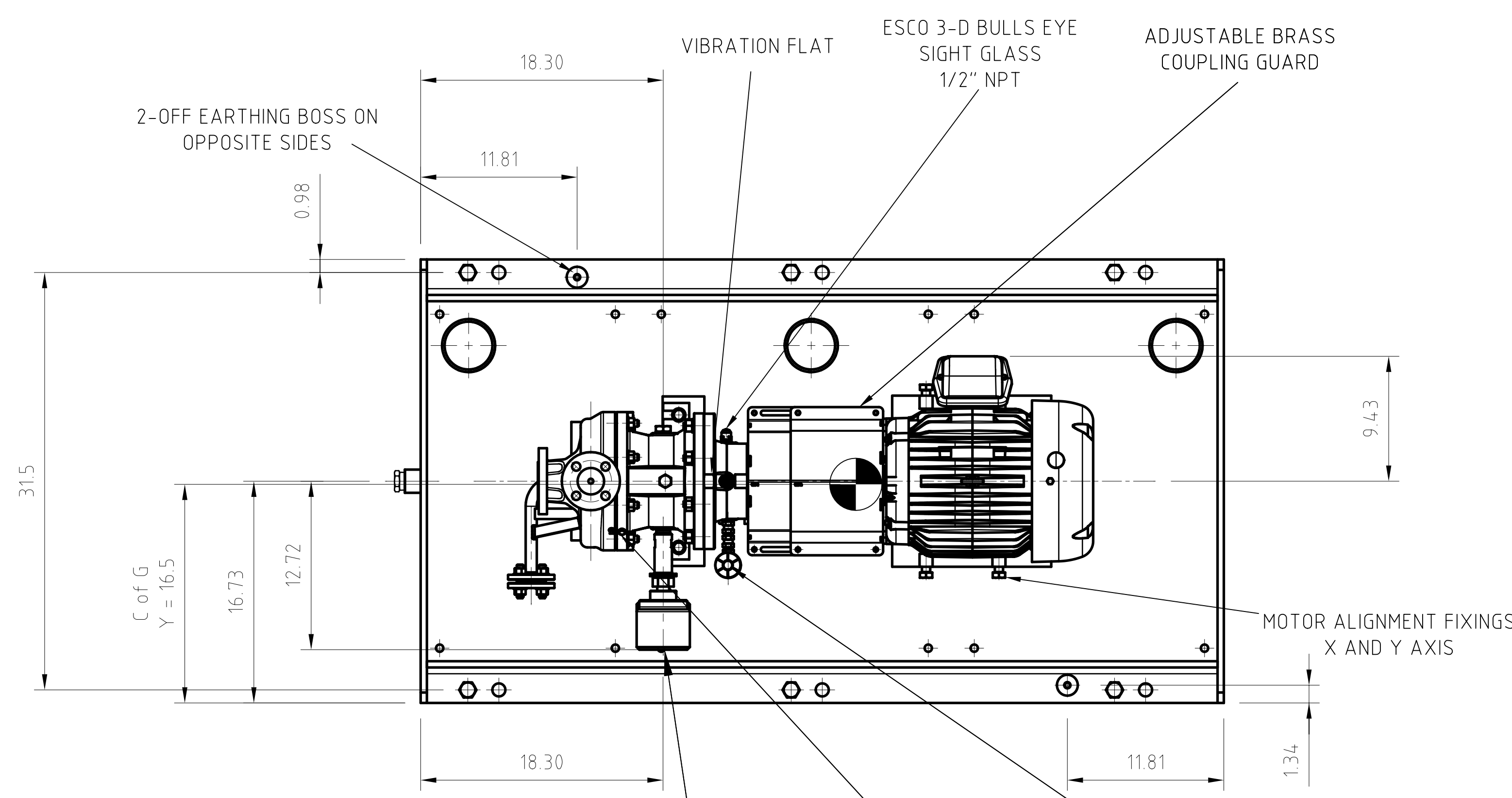
Comment Number	Document Name: General Arrangement Drawing		Revision from which comment first appeared	Comment Status: Open\Closed - (Date Closed:)
	CLIENT COMMENT	HMD RESPONSE	Current Rev:	
1	Grout holes are not required on other side?	No. This is an HMD Standard design baseplate which has been used in many orders and it has not caused any issues.	1	Closed (21/10/2022)
2	Recent vendor changed to 7.5 HP	Noted and updated.	1	Closed (21/10/2022)
3	Flat surface is not appearing please indicate	Noted and updated.	1	Closed (21/10/2022)
4	Include a note: Size 80 Mesh recommended for suction strainer	Noted and updated.	1	Closed (21/10/2022)
5	Locate centerline of suction and discharge from skid edge	Noted and updated.	1	Closed (21/10/2022)
6	With Breather	Noted and updated.	1	Closed (21/10/2022)
7	Shall match with motor nameplate	Noted and updated.	1	Closed (21/10/2022)
8	Service : ? WBS No : 1901	Noted and updated.	1	Closed (21/10/2022)



REFERENCE DRAWINGS:
 Equipment Data Sheet with Predicted Performance Curve – EN207124-SNDYN-9V3-00032
 Cross Sectional Drawing & Parts List – EN207124-SNDYN-9V3-00057
 Coupling Assembly Drawing & Parts List – EN207124-SNDYN-9V3-00021
 Motor GAD – EN207124-SNDYN-9V3-00019
 Motor Data Sheet – EN207124-SNDYN-9V3-00036

ELECTRICAL HEAT TRACING/INSULATION:
 Pump Casing and Coupling Housing should be trace heated.
 Adequate insulation should be applied afterwards to maximize the heating effect.
 Do not trace heat or insulate the oil filled bearing assembly or the electric motor.

Size 80 Mesh recommended for suction strainer



HMD Sealless Pumps
 Hampden Park Industrial Estate,
 Eastbourne, East Sussex, BN22 9AN, England.
 UK Tel: +44(0) 1323 452000
 UK Fax: +44(0) 1323 503369
 USA (Toll free) 888 504 8304

HYDRAULIC	CONNECTIONS			
	ITEM	SIZE	DESCRIPTION	SERVICE
K6 1.5 X 1 X 8	N1	1.5"	ASME B16.5 150lb RF	SUCTION
	N2	1"	ASME B16.5 150lb RF	DISCHARGE
	N3	1/2"	ASME B16.5 150lb RF	CASING DRAIN
	N4	1"	NPT FEMALE	BASEPLATE DRAIN

DISCHARGE - SUCTION	ALLOWABLE PIPING LOADS APPLIED TO NOZZLES	
	1"	1.5"
FORCES (lbf)	FX	1050
	FY	1210
	FZ	1210
MOMENTS (ft.lbf)	FX	800
	FY	1350
	FZ	3000
BOTH	MX	360 / 720
	MY	360 / 190
	MZ	360 / 190

NOTE:
 PUMP PRESSURE CASINGS ARE DESIGNED FOR THE VALUES STATED IN TABLE

ELECTRIC MOTOR DETAILS	
MANUFACTURER	BALDOR
RATING/FRAME	7.5 HP / 213T
ENCLOSURE	Cl.1 Div.2 Gr. A,B,C,D T3C
SUPPLY/SPEED	460 V / 3- / 60 Hz / 1750
MTT (IF APPLICABLE)	N/A
MTL (IF APPLICABLE)	9.43
MTR (IF APPLICABLE)	M/A
MOTOR LENGTH (ML)	19.51

FLEXIBLE COUPLING DETAILS	
MANUFACTURER	METASTREAM
SIZE TYPE	TSKS 13 - 100mm
WEIGHTS (lbs)	
PUMP	176
MOTOR	392
BASEPLATE	454
ANCILLARIES	44
TOTAL	1067

PROJECTION

NOTES:
 PROJECT NAME: WORLD ENERGY RENEWABLES PROJECT
 UNIT: PRETREATED UNIT
 PROJECT LOCATION: WORLD ENERGY, PARAMOUNT, CA, USA
 ENG. & PM.: FLUOR
 CLIENT: WORLD ENERGY PARAMOUNT
 SERVICE: VENT GAS KO DRUM PUMP
 WBS NO.: 1901

CLIENT	AIR PRODUCTS MANUFACTURING LLC
ORDER NUMBER	4505608737
ITEM NUMBER	19-P-780
HMD PUMP NUMBER	839915

ISS	DATE	CHANGE	AUTH
2	21/10/2022	ISSUE FOR REVIEW	AFS
1	31/08/2022	ISSUE FOR REVIEW	AFS
0	11/03/2022	ISSUE FOR REVIEW	AFS

CONTRACTS ISSUE NUMBER				
INTERNAL USE ONLY				
03	17/10/22	CN2022/235	JS	ARM
02	28/08/22	CN2022/200	KCM	JF
01	09/03/22	INITIAL ISSUE	KCM	ARM
ISS	DATE	CHANGE NUMBER	DRN	CHK

ENGINEERING ISSUE NUMBER				
GENERAL ARRANGEMENT DRAWING				
TITLE	GSA 1.5X1X8-L3			
SUBTITLE	TYPE 5 BASEPLATE, SECONDARY CONTROL			
DRAWING NUMBER	X13698			
ISSUE	03	REVISION:	SHEET No. 1 OF 1	

ALL DIMENSIONS IN INCHES U.O.S