



Customer Document title:

Mechanical Seal Drawing

Flowserve Document title: **Mechanical Seal Drawing**

Flowserve Document No.: **1400944-009-5800-01**

Document Revision No.: **A**

Flowserve Order No.: **1400944**

Flowserve Serial No.: **1400944CHP009A/B**

Pump Type/Size: **MARK 3 LO-FLO / 1K1.5X1LF-82OP**

Quantity: **2**

Customer Name: **DESMET BALLESTRA NORTH AMERICA**

PROJECT - WORPAR

ITEM NBR - P632A1-P632A2

TYPE - ASSY

eB NBR - 100212927.001

DATE - 10.02.2022

Customer Tag No: **DESMET TAG#: P632A1, World Energy TAG#: 19-P-767A, DESMET TAG#: P632A2, World Energy TAG#: 19-P-767B**

Customer PO No.: **28493**

End User: **DESMET BALLESTRA NORTH AMERICA**

Please complete and return:

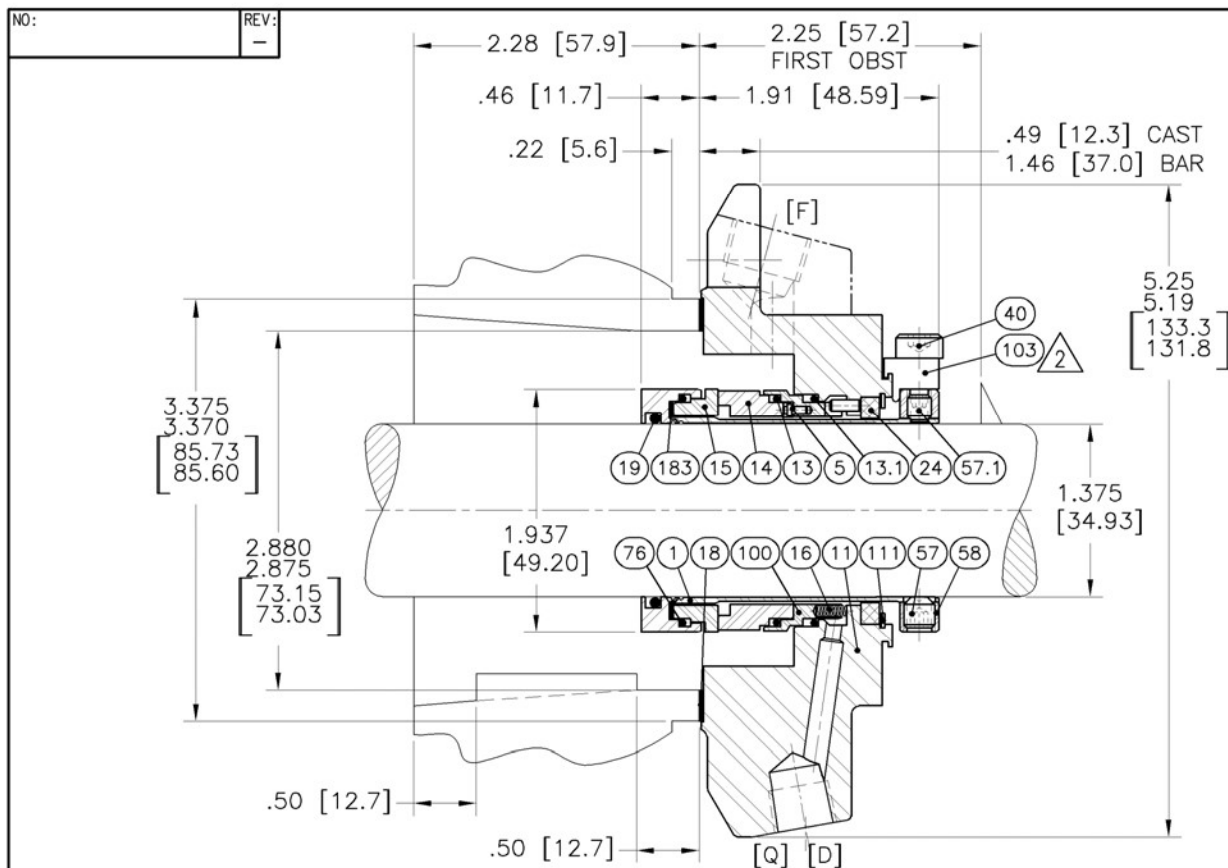
Document Reviewed by:

Document Reviewed date:

- ☐ **APPROVED. NO ACTION REQUIRED**
- ☐ **APPROVED. RE-SUBMIT AS FINAL**
- ☐ **APPROVED WITH COMMENTS.** DOCUMENT WILL BE MODIFIED AND RESUBMITTED AS FINAL.
- ☐ **REJECTED.** CORRECT AND RE-SUBMIT FOR APPROVAL.
- ☐ **FOR INFORMATION.** REVIEW NOT REQUIRED
- ☐ **AS-BUILT**

- Return any documents sent for review with your comments by the stated return date. All documents not returned two weeks after requested Return date will be considered Approved, no action.
- Purchaser's comments and/or corrections within the scope of contract will be made on the first completed document submitted by Flowserve Corp. and returned.
- Corrections, alterations, additions and/or modifications outside scope of contract or made after first submittal may require an additional engineering service charge.
- Items conditionally approved or with deferred approval by purchaser must be specifically stated otherwise delivery may be affected.

Rev	Revision Description	Released	Release Date
	For Information	Morris, Tamika	04-Feb-22



[F] FLUSH 3/8 NPT
 [Q] QUENCH 1/4 NPT
 [D] DRAIN 1/4 NPT

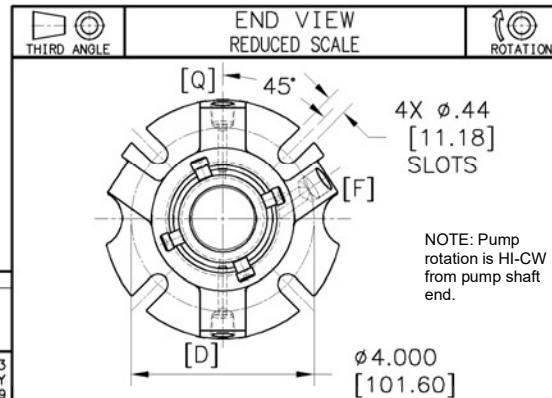
NOTES:

- FOR INSTALLATION AND OPERATING INSTRUCTIONS SEE FIS190.
- DISENGAGE SETTING DEVICES BEFORE START-UP.
- END VIEW IS FOR REFERENCE ONLY. FEATURES AND FEATURE LOCATIONS MAY VARY BY METHOD OF MANUFACTURE.
- PATENT PENDING.

REVISION: - DATE: 12-MAY-2010 BY: MRAMASAMY CHKD: SARUMUGAM TCN NO:
 REVISION NOTE: RELEASE TO MANUFACTURE.

THIS DRAWING AND ANY DESIGN, DEVELOPMENT, INVENTION OR COPYRIGHT WHICH IT MAY EMBODY OR REPRESENT ARE THE PROPERTY OF FLOWERVE CORPORATION. THIS DRAWING MAY NOT BE REPRODUCED, NOR ANY SUBJECT MATTER SHOWN HEREIN MAY BE MANUFACTURED, WITHOUT WRITTEN PERMISSION FROM AN AUTHORIZED AGENT OF FLOWERVE CORPORATION.

DIM'S ARE REF UNLESS SPECIFIED OTHERWISE. B/A3 JULY 2009
 DIM'S IN: INCHES [MM]



BILL OF MATERIAL NO: C2CPX1375ECXVB					1 SUGGESTED SPARE PARTS 2 CODE/RSC [X]/OFF STD [W]	
NO	PARTCODE	QTY	DESCRIPTION	MATERIAL	1	2
1	C0011860DB	1	SLEEVE ASSEMBLY	316		X
5	C0012107NL	2	PIN SQ. HEAD	ALLOY C-276		X
11	C0011302DB	1	GLAND SINGLE-CW	316		X
13	568031GU	1	SEAT GASKET	FLUOROELASTOMER		X
13.1	568031GU	1	SEAT GASKET	FLUOROELASTOMER		X
14	C0011922KR3	1	STATIONARY FACE	CARBON (FDA GRADE)		X
15	K23C1375C33	1	ROTATING FACE	SILICON CARBIDE		X
16	MIAX88403CL	14	COIL SPRING	ALLOY C-276		X
18	MYCG3365A33	1	GLAND GASKET	GYLON (FDA GRADE)		X
19	568126GU	1	SLEEVE GASKET	FLUOROELASTOMER		X
24	C0010310KR3	1	GLAND BUSHING	CARBON (FDA GRADE)		X
40	C0012104CK	4	SHCS #10-24 X 3/8	18-8		X
57	4R0426X902	4	SSCP 1/4-20X1/4	17-4 H900		X
57.1	MLA36788233	2	SSQDP 10-24X7/32	ALLOY C-276		X
58	C0010372DB	1	DRIVE COLLAR	316		X
76	568031GU	1	ROT. FACE GASKET	FLUOROELASTOMER		X
100	C0011984DB	1	STATIONARY FACE SUPPORT	316		X
103	C0012106CK	4	SETTING DEVICE	18-8		X
111	UR181CK	1	SNAP RING	18-8		X
183	C0012046QF	1	VIBRATION DAMPER	FLEXIBLE GRAPHITE		X

DESMET TAG#: P632A1, CUSTOMER TAG#: 19-P-767A,
 DESMET TAG#: P632A2, CUSTOMER TAG#: 19-P-767B

CUSTOMER: FLOWERVE PUMP DIVISION
 ADDRESS: CHESAPEAKE, VA

THIS SEAL IS DESIGNED TO OPERATE WITHIN SPECIFIC OPERATING CONDITIONS. REFER TO THE PUBLISHED APPLICATION INFORMATION AVAILABLE FROM YOUR FLOWERVE SALES REPRESENTATIVE.

SEAL TYPE: ISC2-PX SEAL SIZE: 1.375

SEAL CONFIG: SINGLE INSIDE-CARTRIDGE

MATL CODE: 524T

EQUIP MFR: FLOWERVE

INSTR: FIS190

EQUIP MODEL: MK III GR 1K FML

EQUIP DWG:

SCALE: TO SCALE

PARTS LIST NO: L0000022

DRAWN: MRAMASAMY

REF DWG: D003405

DATE: 12-MAY-2010

FORM DWG: F0012733

CHKD: SARUMUGAM

DRAWING NO:

SHEET: 1 of 1 REV:

APPVD:

JOB NO: