



Customer Document title:

**Reservoir Drawing**Flowserve Document title: **Reservoir Drawing**Flowserve Document No.: **1400944-007-5810-01**Document Revision No.: **A**Flowserve Order No.: **1400944**Flowserve Serial No.: **1400944CHP007A/D**Pump Type/Size: **MARK 3 STANDARD / 2K4X3-10RV**Quantity: **4**Customer Name: **DESMET BALLESTRA NORTH AMERICA**

PROJECT - WORPAR

ITEM NBR - P601.1/1-P601.1/2-P601.2/1-P601.2/2

TYPE - ASSY

eB NBR - 100223588.001

DATE - 23.05.2022

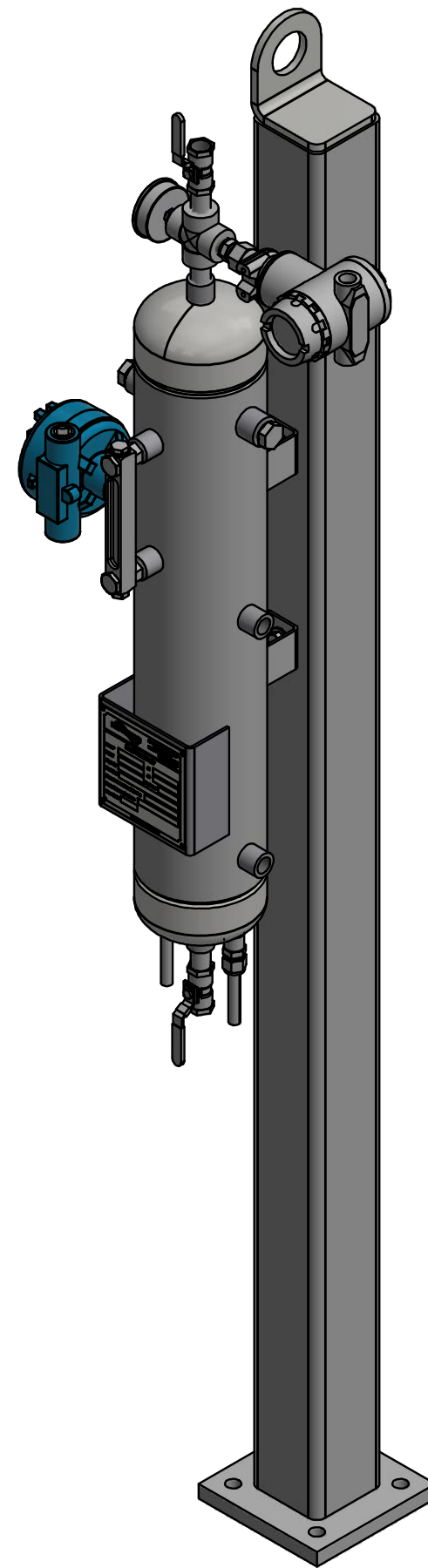
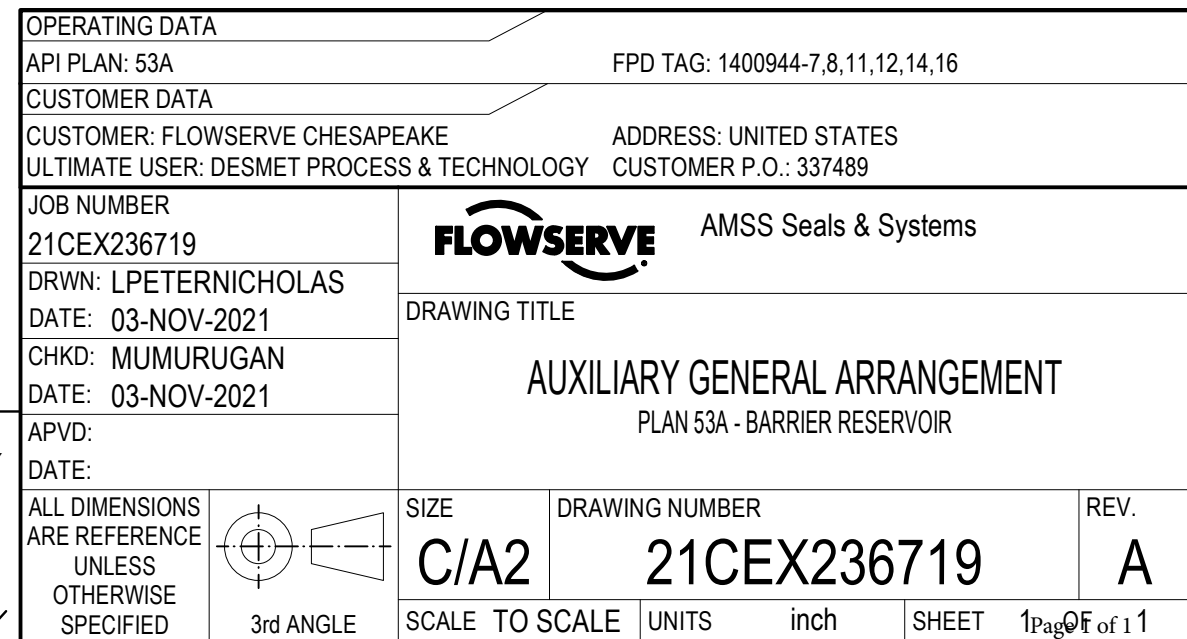
Customer Tag No: **DESMET TAG#: P601.1/1, WORLD ENERGY TAG#: 19-P-760A, DESMET TAG#: P601.1/2, WORLD ENERGY TAG#: 19-P-760B, DESMET TAG#: P601.2/1, WORLD ENERGY TAG#: 19-P-860A, DESMET TAG#: P601.2/2, WORLD ENERGY TAG#: 19-P-860B**

Customer PO No.: **28493**End User: **DESMET BALLESTRA NORTH AMERICA****Please complete and return:****Document Reviewed by:****Document Reviewed date:**

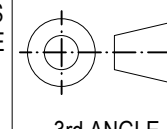
- ☐ **APPROVED. NO ACTION REQUIRED**  
☐ **APPROVED. RE-SUBMIT AS FINAL**  
☐ **APPROVED WITH COMMENTS.** DOCUMENT WILL BE MODIFIED AND RESUBMITTED AS FINAL.  
☐ **REJECTED.** CORRECT AND RE-SUBMIT FOR APPROVAL.  
☐ **FOR INFORMATION.** REVIEW NOT REQUIRED  
☐ **AS-BUILT**

- Return any documents sent for review with your comments by the stated return date. All documents not returned two weeks after requested Return date will be considered Approved, no action.
- Purchaser's comments and/or corrections within the scope of contract will be made on the first completed document submitted by Flowserve Corp. and returned.
- Corrections, alterations, additions and/or modifications outside scope of contract or made after first submittal may require an additional engineering service charge.
- Items conditionally approved or with deferred approval by purchaser must be specifically stated otherwise delivery may be affected.

Rev	Revision Description	Released	Release Date
	For Information	Morris, Tamika	07-Mar-22



UNLESS SPECIFIED OTHERWISE  
(PARENTHESES) DENOTE REFERENCE ONLY  
FEATURE CONTROLS PER ASME Y14.5M-1994  
BREAK OR DEBURR SHARP EDGES: .063  
RADIUS CORNERS: R.125 MINIMUM  
X.XX±0.25, X.XXX±0.125, X.XXXX±0.0625  
ANGLES: ± .5°, SURFACE ROUGHNESS: 125



SIZE	DRAWING NUMBER	REV.
C/A2	21CEX236719	A
SCALE TO SCALE	UNITS inch	SHEET 1 OF 1