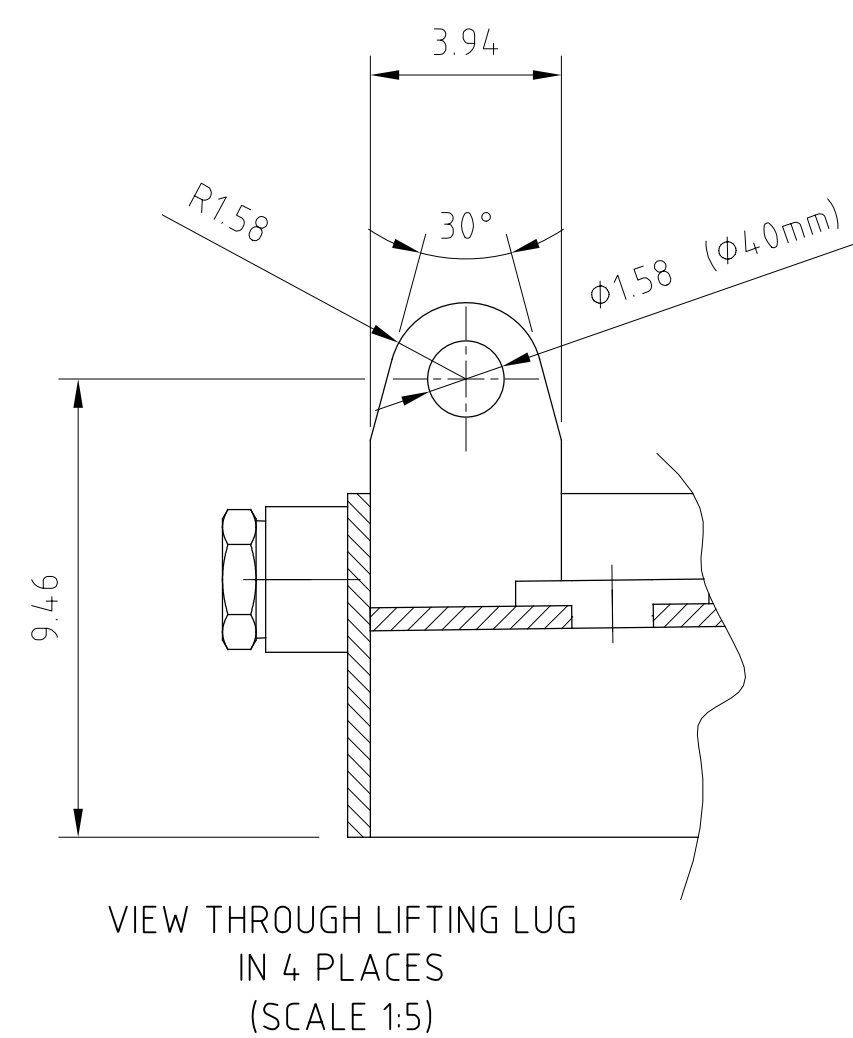
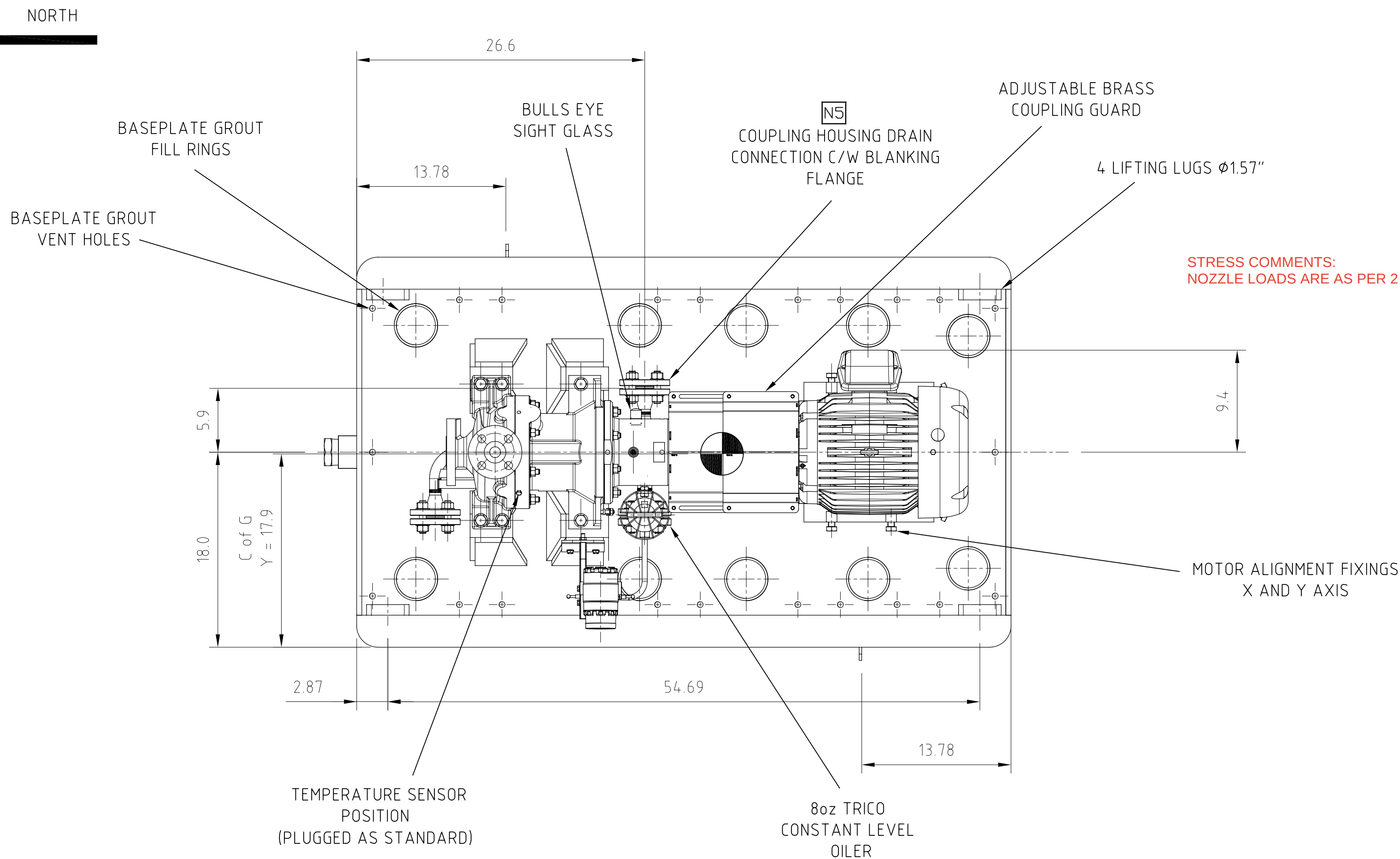
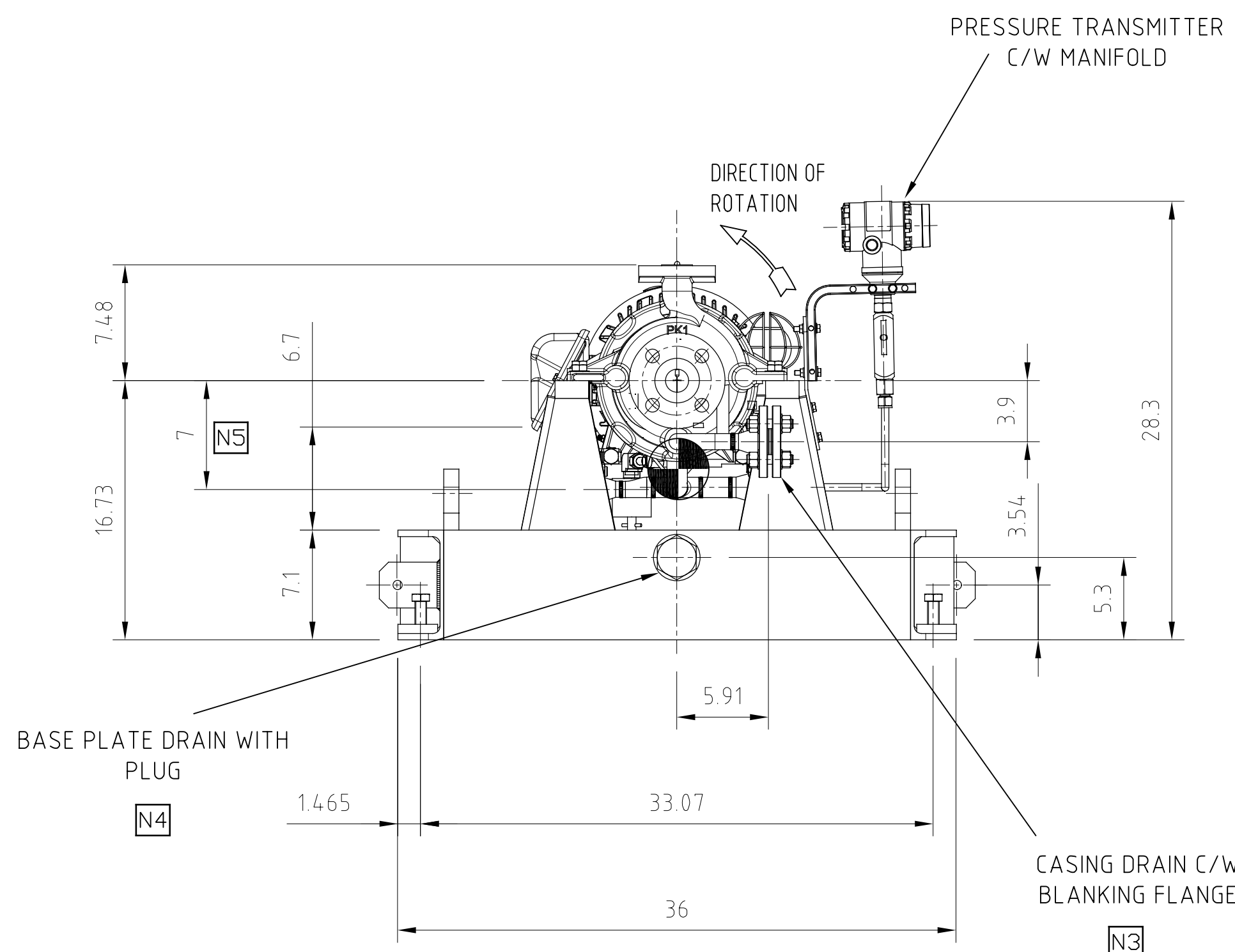


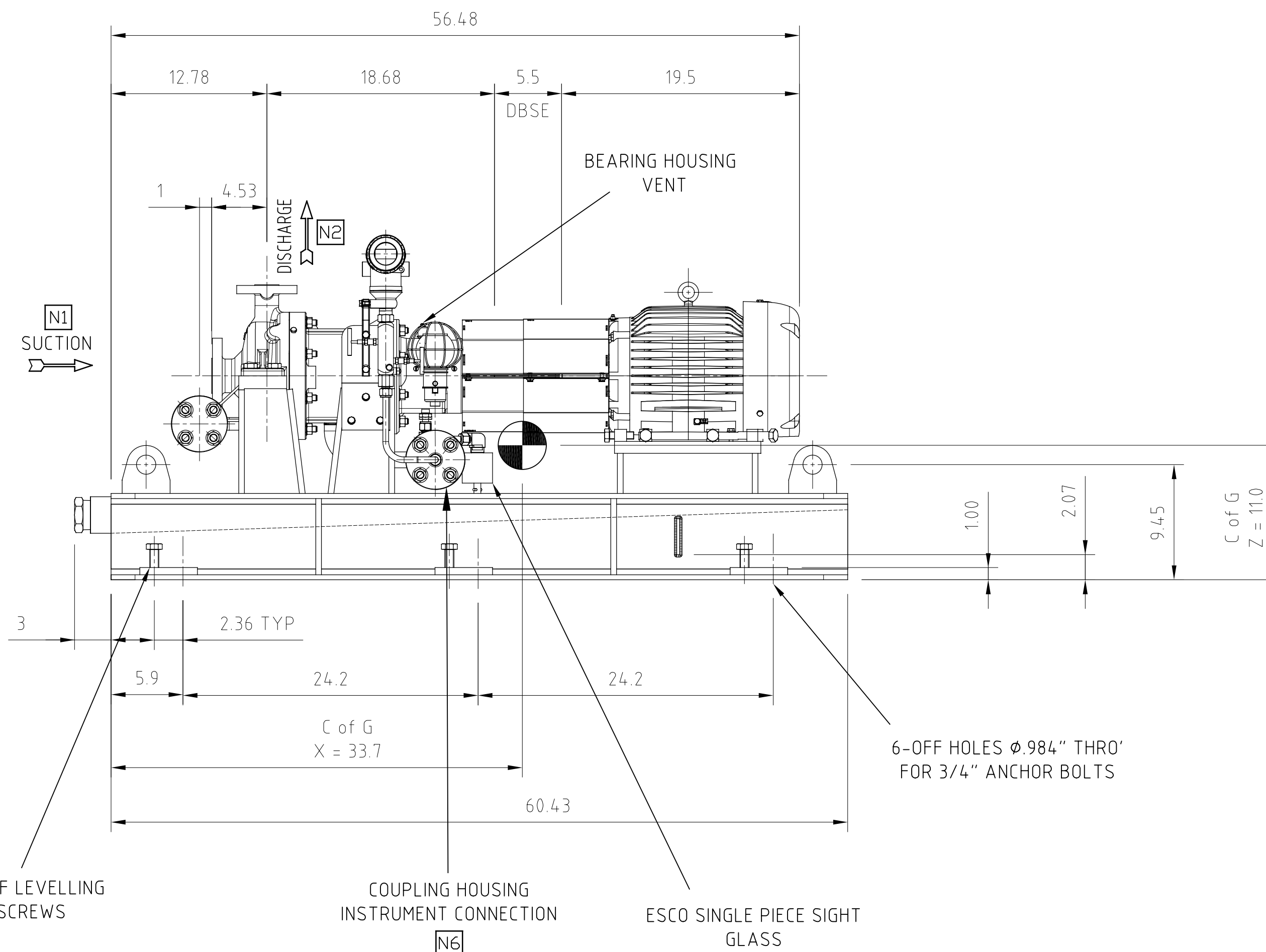
EARTHING PLATE DETAIL
(1/4" THICK - MATERIAL 316L STAINLESS STEEL)
SCALE 1:2



VIEW THROUGH LIFTING LUG
IN 4 PLACES
(SCALE 1:5)



STRESS COMMENTS:
NOZZLE LOADS ARE AS PER 2 TIMES API-685



Sundyne
HMD Kontro

HMD Sealless Pumps
Hampton Park Industrial Estate,
Eastbourne, East Sussex,
BN22 9AN, England.

UK Tel: +44(0) 1323 452000
UK Fax: +44(0) 1323 503369
USA (Toll free) 888 504 8304

HYDRAULIC	ITEM	SIZE	CONNECTIONS	
			DESCRIPTION	SERVICE
PK1 1.5 X 1 X 6	N1	1.5"	ASME B16.5 300lb RF	SUCTION
	N2	1"	ASME B16.5 300lb RF	DISCHARGE
	N3	3/4"	ASME B16.5 300lb RF	CASING DRAIN
	N4	2"	NPT	BASEPLATE DRAIN
	N5	3/4"	ASME B16.5 300lb RF	C'HSG DRAIN
	N6	1"	ASME B16.5 300lb RF	C'HSG INSTRUMENT

5

ALLOWABLE PIPING LOADS APPLIED TO NOZZLES (CONFORMS TO API 685)	1"	1.5"	
DISCHARGE			
FORCES (lbf)			
FX	400		
FY	320		
FZ	260		
FR	580		
FX	320		
FY	260		
FZ	400		
FR	580		
BOTH	MOMENTS (ft.lbf)		
	MX	680 680	
	MY	340 340	
	MZ	520 520	
	MR	920 920	

A technical diagram of a pump pressure casing. It shows a cylindrical body with various nozzles and a flange. A coordinate system is established with Z as the vertical axis, X as the horizontal axis pointing left, and Y as the axis pointing into the page. Various force and moment vectors are indicated: Fx, Fy, Fz, FR at the top nozzle; Fx, Fy, Fz, FR at a side nozzle; and MX, MY, MZ, MR at the bottom flange.

NOTE:
PUMP PRESSURE CASINGS ARE
DESIGNED FOR TWICE THE
VALUES STATED IN TABLE 4A
(4B) OF API 685, 2nd EDITION.
THIS IS NOT APPLICABLE TO
PIPING DESIGN NOZZLE LOADS
WHICH ARE AS PER TABLE 4A (4B).

ELECTRIC MOTOR DETAILS

MANUFACTURER	BALDOR
RATING/FRAME	7.5 HP / 215 T
ENCLOSURE	CL1 Div.2 Gr. A,B,C,D T3C
SUPPLY/SPEED	460 V / 3~ / 60 Hz / 3480 RPM
MTT (IF APPLICABLE)	N/A
MTL (IF APPLICABLE)	9.4
MTR (IF APPLICABLE)	N/A
MOTOR LENGTH (ML)	19.5

FLEXIBLE COUPLING DETAILS

MANUFACTURER	METASTREAM
SIZE TYPE	TSKS 13 - 140mm

	DRY	OPERATING
WEIGHTS (lb)		
PUMP	265	275
MOTOR	420	420
BASEPLATE	722	722
ANCILLARIES	44	44
TOTAL	1451	1461

NOTES:

- NOTE 1: MAXIMUM MAINTENANCE WEIGHTS ARE THE SAME AS DRY.
- NOTE 2: STRAIGHT LINE PIPING BEFORE SUCTION, N1, SHOULD BE 5x PIPE DIAMETER. STRAIGHT LINE PIPING AFTER DISCHARGE, N2, SHOULD BE 3x PIPE DIAMETER.
- NOTE 3: MAINTENANCE SPACE AROUND PUMP SHOULD BE 18-36" ON A MINIMUM OF ONE SIDE AND SUFFICIENT SPACE TO REMOVE THE PUMP OR MOTOR TO THE SIDE. HEIGHT ABOVE THE BASEPLATE SHALL ALLOW REMOVAL OF PUMP OR MOTOR WITH SITE LIFTING EQUIPMENT.

EQUIPMENT OWNER AIR PRODUCTS MANUFACTURING LLC

CLIENT	WORLD ENERGY PARAMOUNT
ORDER NUMBER	4505605360
ITEM NUMBER	18-P-255A/B (AQUA-AMMONIA PUMPS)
HMD PUMP NUMBER	839920

2	01/09/2022	ISSUE FOR REVIEW	AFS
1	06/06/2022	ISSUE FOR REVIEW	AN
0	11/03/2022	ISSUE FOR REVIEW	AFS
ISS	DATE	CHANGE	AUTH

CONTRACTS ISSUE NUMBER

INTERNAL USE ONLY

03	02/08/22	CN2022/184	ARM	KCM
02	10/05/22	CN2022/106	ARM	KCM
01	09/03/22	INITIAL ISSUE	JS	ARM
ISS	DATE	CHANGE NUMBER	DRN	CHK

ENGINEERING ISSUE NUMBER

GENERAL ARRANGEMENT DRAWING

TITLE: GSP 1.5x1x6			
SUBTITLE: SECONDARY CONTAINMENT, API DRAIN PAN, 215 T MOTOR			
DRAWING NUMBER		X13686	
ISSUE: 03	REVISION:	SHEET No.	1 OF 1

ALL DIMENSIONS IN INCHES U.O.S.