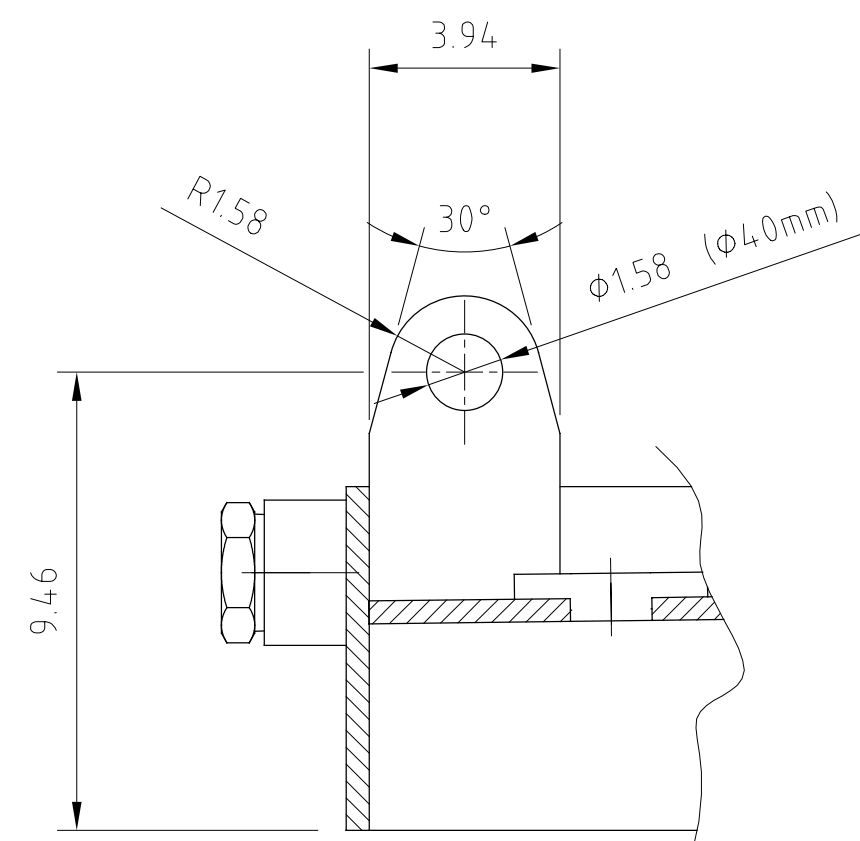
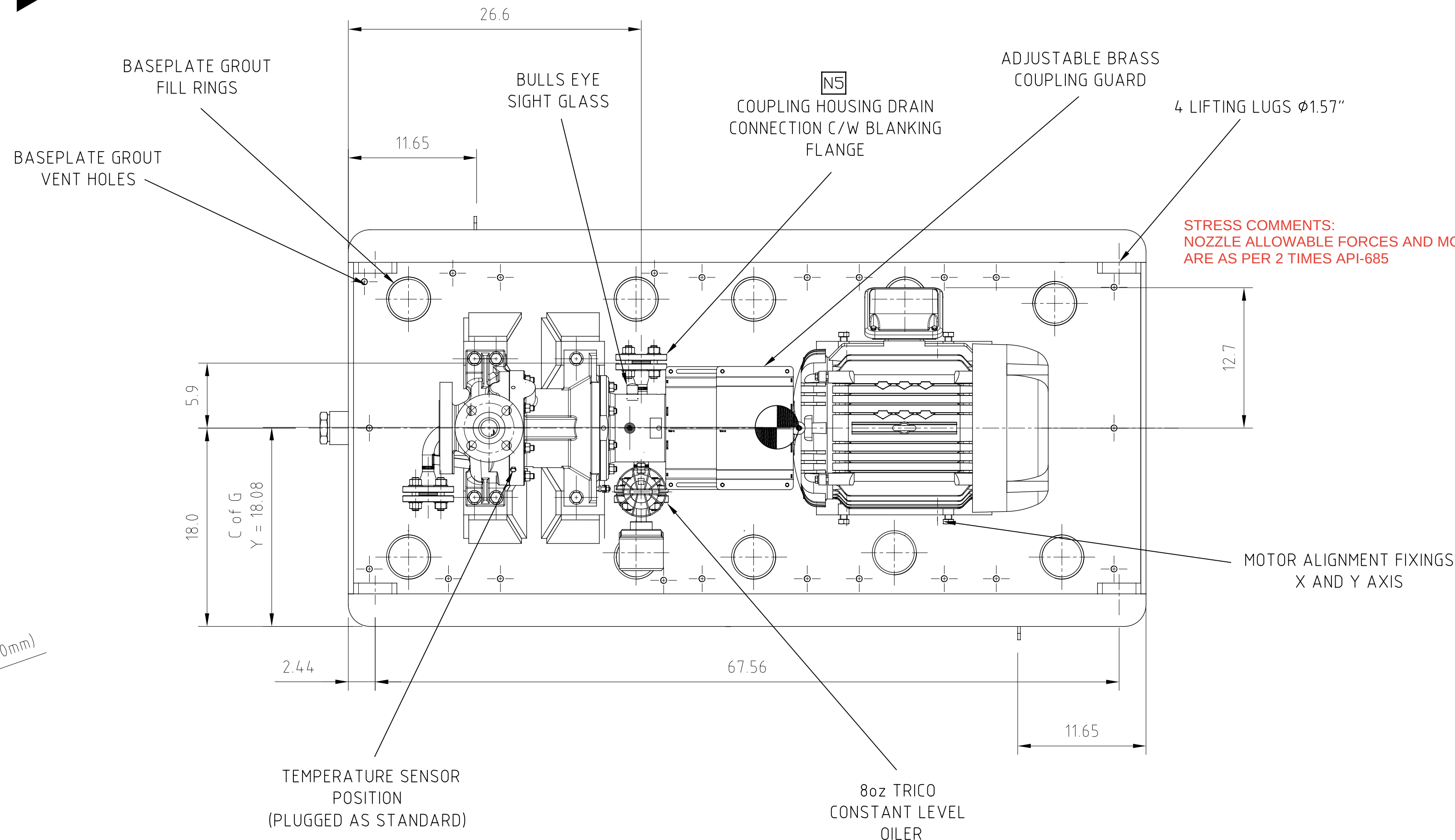
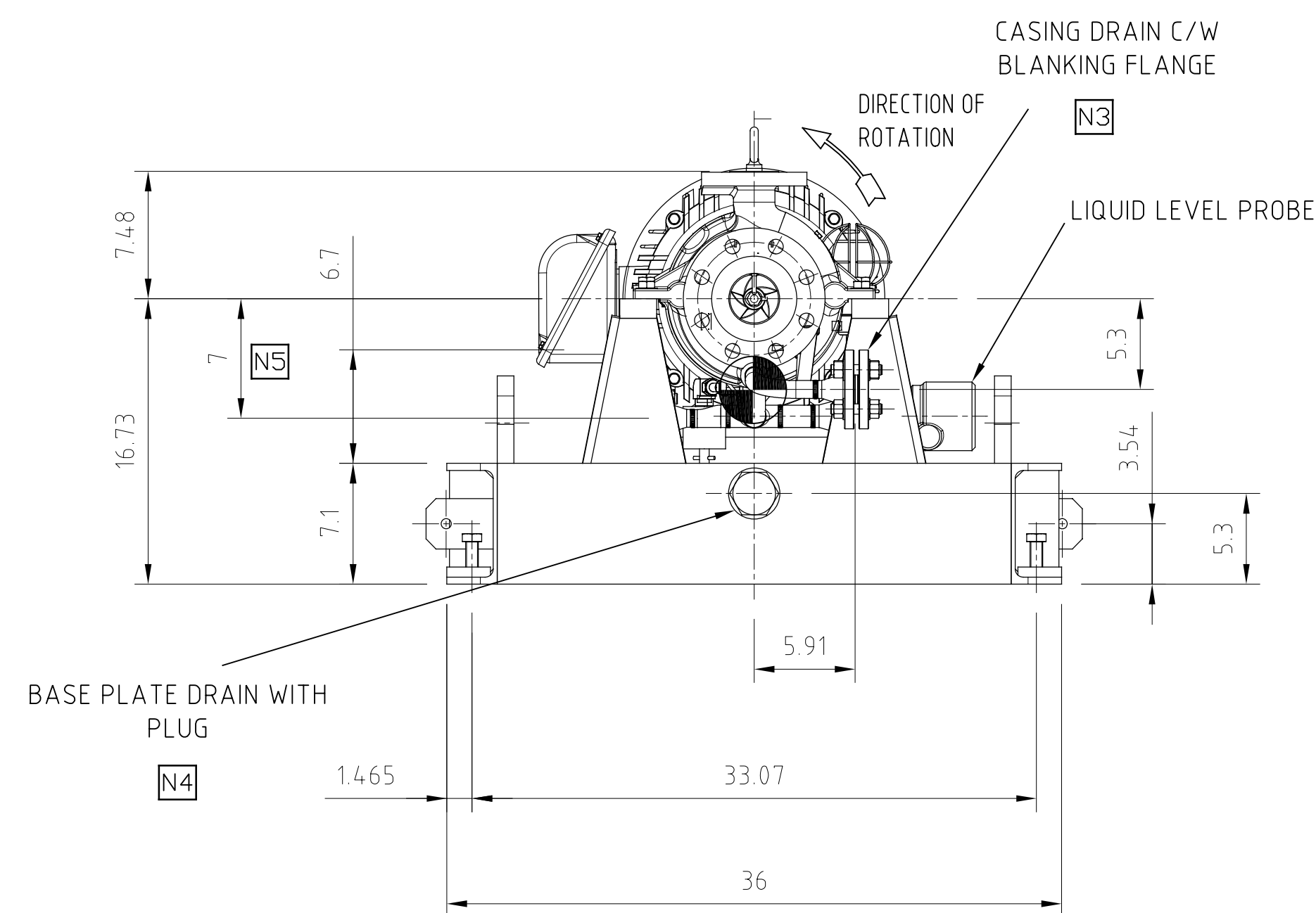


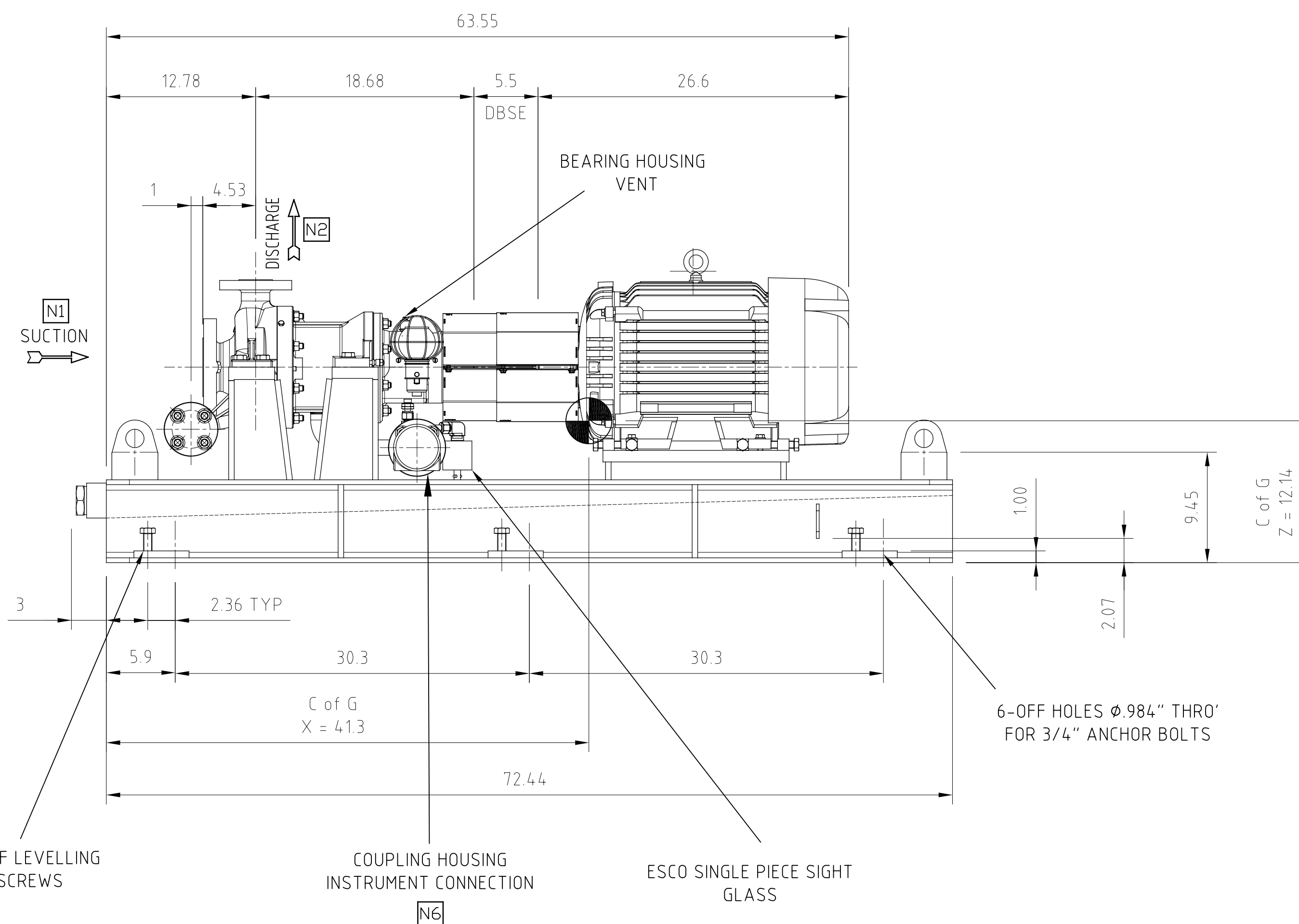
EARTHING PLATE DETAIL
(1/4" THICK - MATERIAL 316L STAINLESS STEEL)
SCALE 1:2



VIEW THROUGH LIFTING LUG
IN 4 PLACES
(SCALE 1:5)



STRESS COMMENTS:
NOZZLE ALLOWABLE FORCES AND MOMENTS
ARE AS PER 2 TIMES API-685



HMD Sealless Pumps
Hamden Park Industrial Estate,
Eastbourne,
East Sussex,
BN22 9AN, England.

UK Tel: +44(0) 1323 452000
UK Fax: +44(0) 1323 503369
USA (Toll free) 888 504 8304

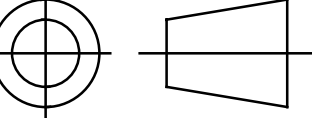
HYDRAULIC	CONNECTIONS			
	ITEM	SIZE	DESCRIPTION	SERVICE
PK2H 3 X 1.5 X 6	N1	3"	ASME B16.5 300lb RF	SUCTION
	N2	1.5"	ASME B16.5 300lb RF	DISCHARGE
	N3	3/4"	ASME B16.5 300lb RF	CASING DRAIN
	N4	2"	NPT	BASEPLATE DRAIN
	N5	3/4"	ASME B16.5 300lb RF	C'HSG DRAIN
	N6	1"	ASME B16.5 300lb RF	C'HSG INSTRUMENT

ALLOWABLE PIPING LOADS APPLIED TO NOZZLES (CONFORMS TO API 685)			
		1.5"	3"
DISCHARGE	FORCES (lbf)		
	FX	600	400
	FY	480	400
	FZ	400	860
	FX	320	260
	FY	260	400
SUCTION	FZ	400	580
	MOMENTS (ft.lbf)		
	MX	680	1400
BOTH	MY	340	700
	MZ	520	1060
	MR	920	1900

NOTE:
PUMP PRESSURE CASINGS ARE DESIGNED FOR TWICE THE VALUES STATED IN TABLE 4A (4B) OF API 685, 2nd EDITION. THIS IS NOT APPLICABLE TO PIPING DESIGN NOZZLE LOADS WHICH ARE AS PER TABLE 4A (4B).

ELECTRIC MOTOR DETAILS	
MANUFACTURER	BALDOR
RATING/FRAME	20 HP / 284 TS
ENCLOSURE	CL1 Div.2 Gr.A,B,C,D T3C
SUPPLY/SPEED	460 V / 3~ / 60 Hz / 3500 RPM
MTT (IF APPLICABLE)	N/A
MTL (IF APPLICABLE)	12.7
MTR (IF APPLICABLE)	N/A
MOTOR LENGTH (ML)	26.6

FLEXIBLE COUPLING DETAILS	
MANUFACTURER	METASTREAM
SIZE TYPE	TSKS 13 - 140mm

	DRY	OPERATING	<div>PROJECTION</div> 
WEIGHTS	(lb)		
PUMP	265	275	
MOTOR	1012	1012	
BASEPLATE	822	822	
ANCILLARIES	22	22	
TOTAL	2121	2131	

NOTES:	
NOTE 1	MAXIMUM MAINTENANCE WEIGHTS ARE THE SAME AS DRY
NOTE 2	STRAIGHT LINE PIPING BEFORE SUCTION, N1, SHOULD BE 5x PIPE DIAMETER
	STRAIGHT LINE PIPING AFTER DISCHARGE, N2, SHOULD BE 3x PIPE DIAMETER
NOTE 3	MAINTENANCE SPACE AROUND PUMP SHOULD BE 18-36" ON A MINIMUM OF ONE SIDE AND SUFFICIENT SPACE TO REMOVE THE PUMP OR MOTOR TO THE SIDE
	HEIGHT ABOVE THE BASEPLATE SHALL ALLOW REMOVAL OF PUMP OR MOTOR WITH SITE LIFTING EQUIPMENT.
EQUIPMENT OWNER AIR PRODUCTS MANUFACTURING LLC	

CLIENT		WORLD ENERGY PARAMOUNT
ORDER NUMBER	4505605360	
ITEM NUMBER	18-P-253A/B	(TRANSFER PUMPS)
HMD PUMP NUMBER	839918	

2	01/09/2022	ISSUE FOR REVIEW	AFS
1	13/07/2022	ISSUE FOR REVIEW	AN
0	11/03/2022	ISSUE FOR REVIEW	AFS
ISS	DATE	CHANGE	AUTH

CONTRACTS ISSUE NUMBER			
------------------------	--	--	--

INTERNAL USE ONLY			
03	02/08/22	CN2022/184	ARM KCM
02	10/05/22	CN2022/106	ARM KCM
01	08/03/22	INITIAL ISSUE	JS ARM
ISS	DATE	CHANGE NUMBER	DRN CHK

ENGINEERING ISSUE NUMBER			
--------------------------	--	--	--

GENERAL ARRANGEMENT DRAWING			
TITLE: GSP 3x1.5x6H			
SUBTITLE: SECONDARY CONTAINMENT, API DRAIN PAN, 256 T MOTOR			
DRAWING NUMBER		X13685	
ISSUE: 03	REVISION:	SHEET No. 1 OF 1	

ALL DIMENSIONS IN INCHES U.O.S