


1

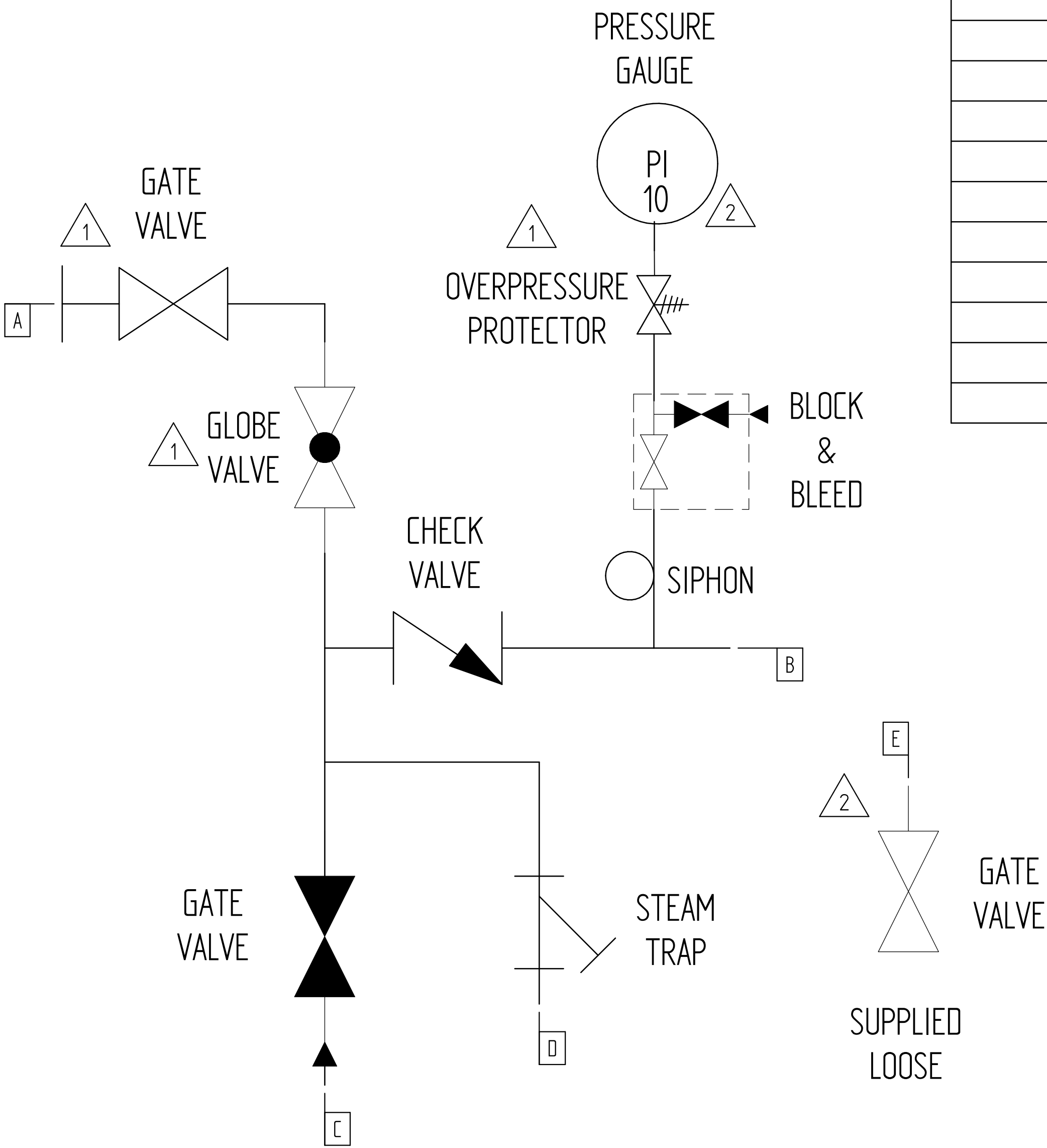
1


316 SS WT'D

[illegible][illegible]

Two triangles are shown side-by-side. The left triangle is labeled '1' and the right triangle is labeled '2'.

CONFIGURATION	GNP / CODE	DRG. LOC.	DESIGN AUTH.	SCALE
PLAN 62		TULSA	US74EN	NONE
		DRAWING No.		ISSUE
		LCPS3133701 1 of 2		2

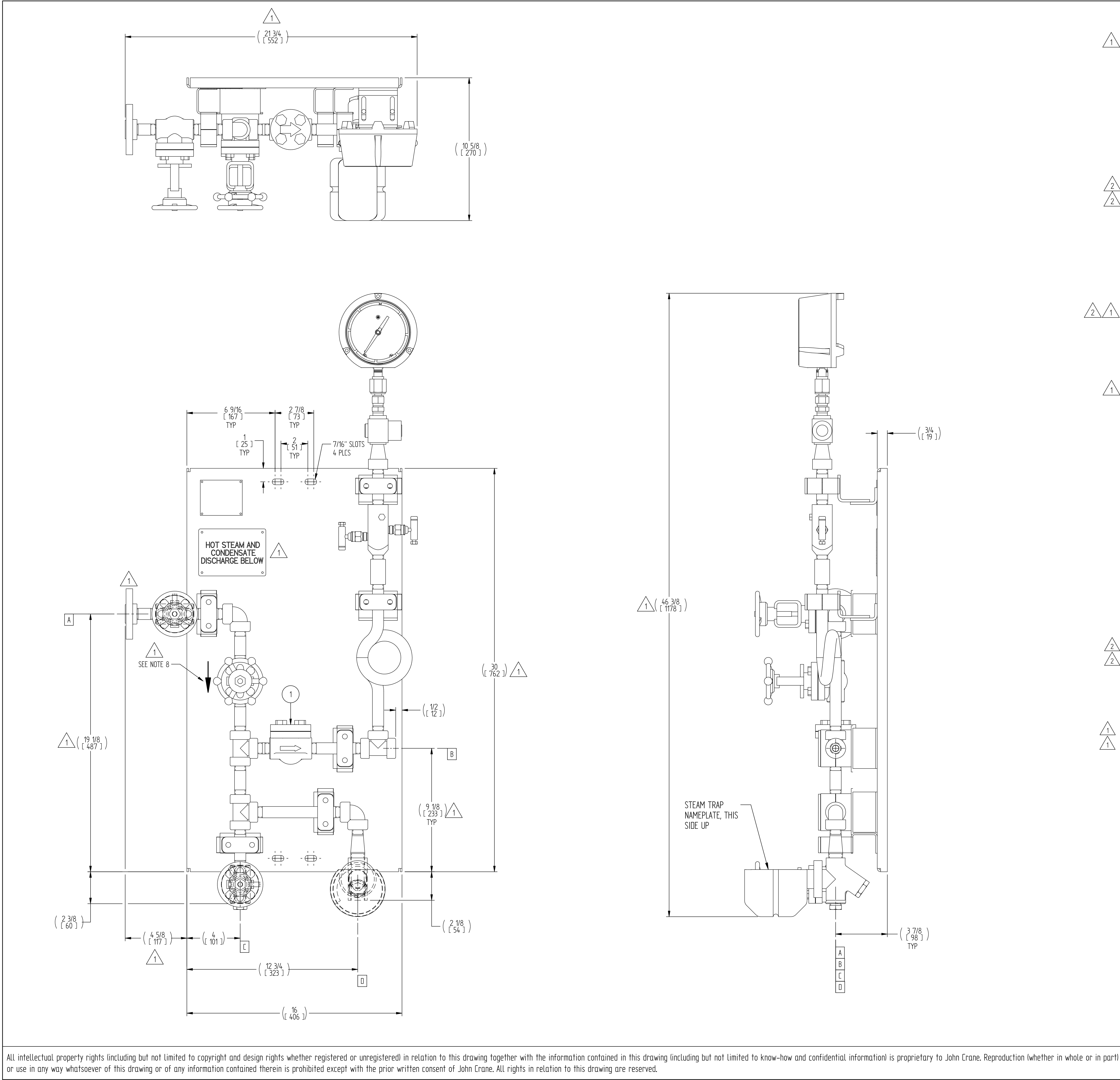


 <p>THIRD ANGLE PROJECTION</p>	TOLERANCES (UNLESS OTHERWISE STATED) = (mm)	
	FRACTIONS	±1/4"
	X.X	±.05"
	X.XX	±.01"
	X.XXX	±.005"
	ANGULAR	±1°

2	CGR	VRM	VRM	REVISED PER CUSTOMER COMMENTS	07 SEP 2022
1	CGR	VRM	VRM	REVISED PER CUSTOMER COMMENTS	21 JUL 2022
0	CGR	VRM	VRM	ISSUED FOR APPROVAL	26 APR 2022
REV	PREP'D	CHK'D	APPR'D	DESCRIPTION	DATE

PROJECT	World Energy Renewables
PURCHASER	Air Products Manufacturing LLC
ENGINEERING	Sulzer/Fluor
END USER	World Energy Paramount
LOCATION	Paramount, CA USA
JC REF. No.	

ALL intellectual property rights (including but not limited to copyright and design rights) whether registered or unregistered in relation to this drawing (including but not limited to know-how and confidential information) is proprietary to John Crane. Reproduction (whether in whole or in part) or use in any way whatsoever of this drawing or of any information contained therein is prohibited except with the prior written consent of John Crane. All rights in relation to this drawing are reserved.



All intellectual property rights (including but not limited to copyright and design rights whether registered or unregistered) in relation to this drawing together with the information contained in this drawing (including but not limited to know-how and confidential information) is proprietary to John Crane. Reproduction (whether in whole or in part) or use in any way whatsoever of this drawing or of any information contained therein is prohibited except with the prior written consent of John Crane. All rights in relation to this drawing are reserved.

REFERENCE CODES & STANDARDS				
ASME B16.5 FOR FLANGES				
INSPECTION AND TESTING				
1. AIR CHECK FOR COMPLETED UNIT TO BE PERFORMED ONLY. 2. CALIBRATION FOR PRESSURE GAUGE PER INSTRUMENT MANUFACTURER STANDARD.				
SURFACE FINISH				
STAINLESS STEEL COMPONENTS TO BE BARE. CS COMPONENTS PER JOHN CRANE FLUID CONTROL GROUP STANDARD.				
SYSTEM WEIGHTS AND VOLUMES				
ESTIMATED DRY WEIGHT (FOR ACTUAL UNIT WEIGHT REFER TO UNIT TAG)		75 lbs		
WET WEIGHT (Nominal)		N/A lbs		
RESERVOIR NOMINAL VOLUME		N/A Gal		
OPERATING VOLUME AT NORMAL LEVEL		N/A Gal		
ACCUMULATOR NOMINAL VOLUME		N/A Gal		
INSTRUMENTS ELECTRICAL CLASSIFICATION				
NOT APPLICABLE, THERE ARE NO ELECTRICAL INSTRUMENTS ON THIS ASSEMBLY DRAWING.				
NOTES:				
1. ALL DIMENSIONS ARE IN INCHES. 2. ALL DIMENSIONS IN [] ARE IN MILLIMETERS. 3. ALL DIMENSIONS IN () ARE REFERENCE DIMENSIONS. 4. PIPE CLAMPS ARE USED AS REQUIRED FOR SUPPORT. 5. PIPING TO BE SCH 160. 6. TUBE FITTINGS TO BE SWAGELOK. 7. STEAM SUPPLY TO BE < 50 PSIG, PRESSURE REGULATOR BY OTHERS. 8. ARROW SHOWN TO INDICATE THE FLUID DIRECTION. IT WON'T BE MARKED ON PANEL BUT IT MIGHT BE MARKED ON THE VALVE PER MANUFACTURER STANDARD.				
DESCRIPTION				
PLAN 62 STEAM PANEL				
<div><div><div>1</div><div>2</div></div></div>				
CONFIGURATION	GPB / CODE	DRG. LOC.	DESIGN AUTH.	SCALE
PLAN 62		TULSA	US74EN	NONE
<div><div><div>john crane</div><div>Seal Support System</div></div></div>		DRAWING No.		ISSUE
		LCPS3133701		2
		2 of 2		