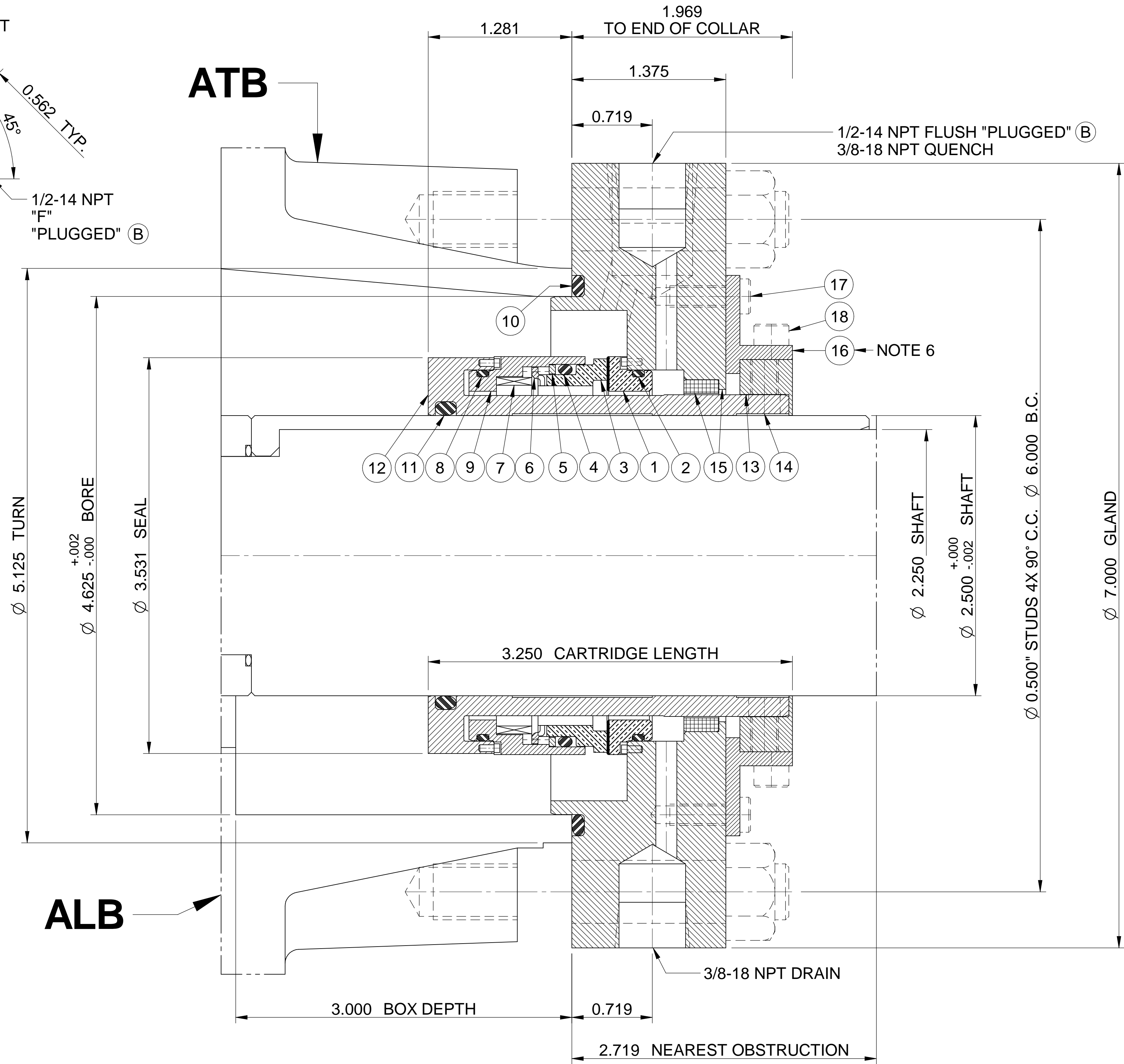
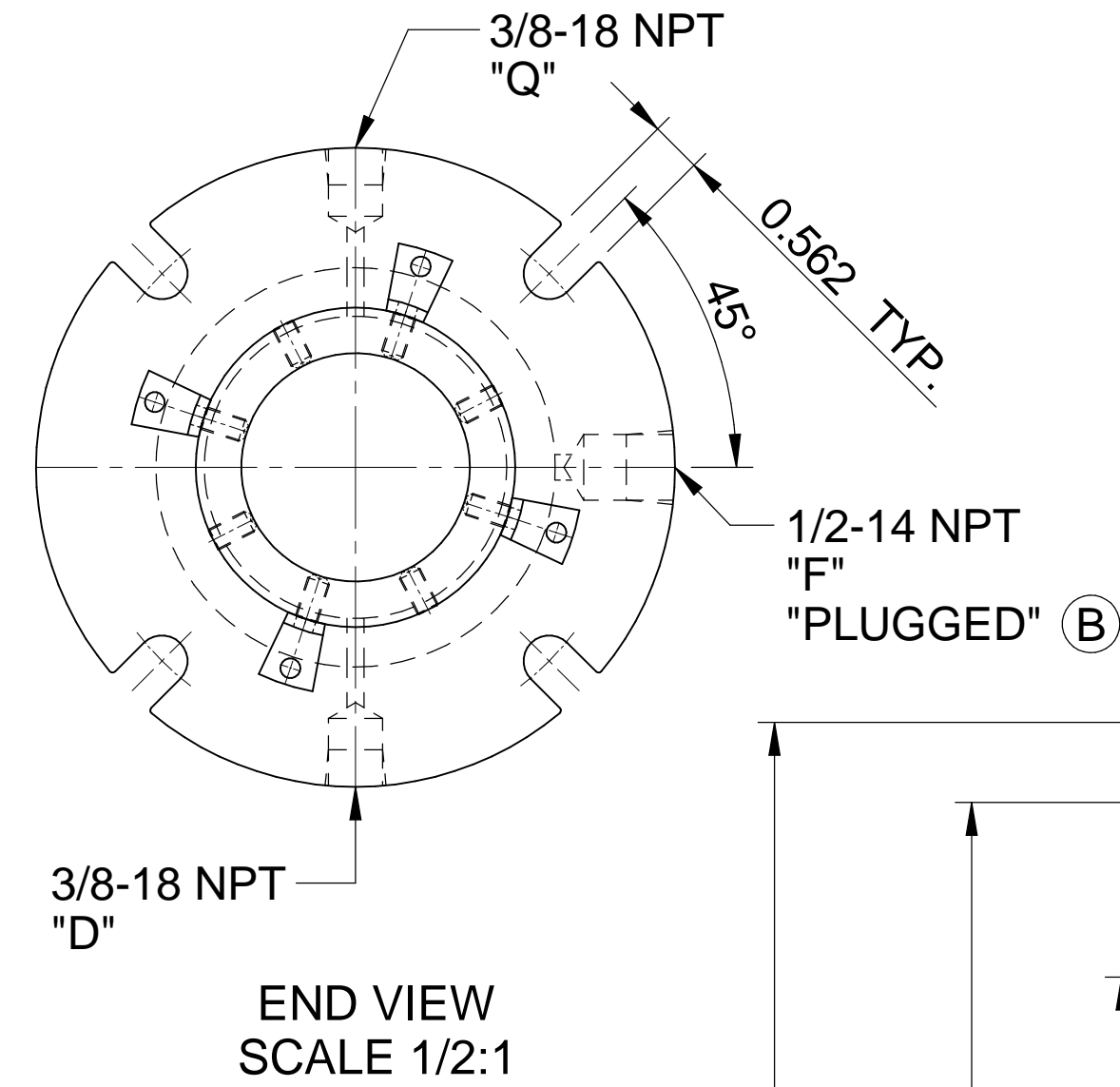
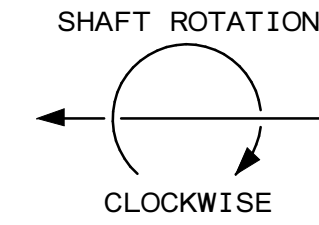


ITEM	DRAWING No.	MAT'L CODE	DESCRIPTION	MATERIAL	SK
					QTY
1	H-2751-378	8189	MATING RING	SILICON CARBIDE / DIAMOND	1 *
2	0000041	9549	O-RING	FLUOROELASTOMER	1 *
3	H-2751-377	1883	PRIMARY RING	GRAPHITE LOADED SILICON CARBIDE	1 *
4	0000152	9549	O-RING	FLUOROELASTOMER	1 *
5	H-2751-393	0550	ANTI-EXTRUSION RING	316 S.S.	1
6	H-2751-400	0550	DRIVE RING	316 S.S.	1
7	7598		SPRING	ALLOY C-276	1 *
8	0000041	9549	O-RING	FLUOROELASTOMER	1 *
9	H-2751-399	0550	RETAINER	316 S.S.	1
10	0000247	9549	O-RING	FLUOROELASTOMER	1 *
11	0000230	9549	O-RING	FLUOROELASTOMER	1 *
12	H-2500-1740	0550	SLEEVE ASSY	316 S.S.	1
13	H-2500-1742	0550	COLLAR	316 S.S.	1
14	17252008000	0800	KNURLED PT. SET SCREW	17-4 PH S.S.	8 *
15	H-2500-9215	9398	GLAND PLATE ASSY	316 S.S./CARBON	1
16	579068-24		SPACER	ALUMINUM	4 *
17	21102408300	0550	LOW HEAD CAP SCREW	316 S.S.	4 *
18	21083206000	0550	SOCKET HEAD CAP SCREW	316 S.S.	4 *
19	D-0501-039	0550	1/2 NPT PLUG (NOT SHOWN)	316 S.S.	1



ALB



6. SPACERS (ITEM 16) ARE ONLY FOR THE PURPOSE OF PROPERLY LOCATING SEAL. SPACERS MUST BE REMOVED AFTER GLAND PLATE,BEARING,SHAFT AND SEAL ARE LOCKED IN PLACE AND BEFORE STARTING UNIT.
7. GLAND MUST BE IN CONTACT WITH HOUSING. DO NOT OVER STRESS.
8. TO AVOID MOVEMENT OF SLEEVE IN RELATION TO SHAFT, SPOTFACE SHAFT UNDER TWO SET SCREWS MINIMUM 180° APART.

THE FOLLOWING NOTES ARE IMPORTANT AND MUST BE OBSERVED FOR CORRECT SEAL INSTALLATION AND OPERATION

1. REMOVE ALL SHARP EDGES ON SHAFT & / OR SLEEVE BEFORE INSTALLATION OF SEAL.

2. LUBRICATE SHAFT/SLEEVE & SEAL WEDGE RING/O-RING/BELLOW TO ASSIST INSTALLATION OF SEAL WITH COMPATITABLE LUBRICANT

3. END OF SEAL CHAMBER & AXIS OF SHAFT MUST BE AT 90° TO EACH OTHER WITHIN.002 F.I.M.

4. VENT GAS ENTRAPMENT BEFORE STARTUP.

5. ALL SHOULDERS OVER WHICH SEAL MUST PASS WHEN FITTING, TO BE PREPARED AS DIAGRAM AS SHOWN.

BREAK DEFINITION

0.040

RAD

20°

ALL DIMENSIONS ARE INCHES UNLESS OTHERWISE SPECIFIED.

(B)

PLAN 03

(B)

CIRCULATION BETWEEN PUMP AND SEAL CHAMBER CREATED BY SEAL CHAMBER DESIGN

PLAN 62

FROM EXTERNAL SOURCE

(B)

DRY STEAM QUENCH FROM EXTERNAL SOURCE

**

** APPLY DRY STEAM AT 2 PSIG WITH A VISIBLE WHISP AT DRAIN (B)

*** EQUIPMENT SERVICE - RAILCAR UNLOADING PUMPS (B)

EQUIPMENT TAGS - 18-P-1824/1825/1826/1827

DYNAMIC PRESSURE RATING - 225 PSIG (B)

STATIC PRESSURE RATING - 300 PSIG

PRESSURE TEST AT FACTORY PER API 682 - 50 PSIG NITROGEN

SEAL ASS'Y NO.	BILL OF MATERIALS NUMBER				
IN :	ASSEMBLY	(B) 1-19	91206745		
	SEAL HEAD				
OUT:	SPARES KIT				
	DESCRIPTION	ITEMS	NUMBER		
EQUIPMENT REFERENCE		SEAL DATA			
OEM:	API PLAN:	API CODE:			
SULZER PUMPS	03/62 (B)	11A-SFN-062-03/62 (B)			
EQUIPMENT TYPE:	INSTRUCTION MANUAL REF.				
PUMP	SOM0007678700000-01 (B)				
MODEL, FRAME / SIZE (B)	MATERIAL CODE:				
CPT3/CPE3/CPE32-6G, OH1 / 8X6X15	X D107 1 X D200 H 316/HC				
SERIAL / DRAWING No.					
CUSTOMER INFORMATION		SERVICE DATA			
CUSTOMER: (B)	FLUID: (B)				
AIR PRODUCTS MANUFACTURING LLC.	SOYBEANOIL (B), CORN OIL, OR TALLOW				
P.O. NUMBER:	PLANT ITEM NO:	BARRIER FLUID:			
4502012504	*** (B)	N/A			
END USER:	CHAMBER PRESSURE:				
WORLD ENERGY PARAMOUNT (B)	6 MIN / 24 MAX PSIG (B)				
LOCATION:	SUCTION PRESSURE:				
PARAMOUNT, CA. USA (B)	-1 RATED / 7 MAX PSIG (B)(C)				
PLANT:	DISCHARGE PRESSURE:				
WORLD ENERGY PARAMOUNT (B)	84.8 PSIG (B)				
REFERENCE DATA:	PROCESS TEMPERATURE:				
DOR0199136	122 NORM / 140 MAX °F (B)				
REF. DWG. #: GA-101320	SHAFT SPEED:	VAPOUR PRESSURE:			
	1785 RPM (B)	1.5 PSIA (B)			
	SPECIFIC GRAVITY:	VISCOSITY:			
	0.903 (B)	24.9 cP (B)			
IPROJECTS NO: 516125-US62 (C)	DE / NDE DRG NO:				
SEAL SIZE: Ø2.500"					
SEAL TYPE: 5610Q SINGLE CARTRIDGE					
SCALE	DATE	DRAWN	CHECKED	APPROVED	DESIGN AUTH.
2 : 1	300422	MHS	NT	AL	US31EN
		DRAWING No.			ISSUE
		GA-270149-1			C