

f


a

a

f

(b)

DRAWING CONTENT	
SHEET DESCRIPTION	SHEET NO.
GA ISOMETRIC DATA SHEET	1
FOUNDATION AND NOZZLE	2
CONNECTION LAYOUT	3

(f)	CHANGES ACCORDING TO CUSTOMER COMMENTS				02-FEB-2023	02-FEB-2023	02-FEB-2023
					J. FLORES	C. HERNANDEZ	C. GONZALEZ
REV.	MODIFICATION				MODIFIED	CHECKED	APPROVED
SEP. PARTS LIST:		NO	FORMAT: A1	DESIGN GROUP: -		THIRD ANGLE PROJECTION 	
REPLACED BY:				- SUBSTITUTE FOR:		ORIGINAL SCALE: -	
OHH 4X6X7.5A		GENERAL ARRANGEMENT GA ISOMETRIC AND DATA SHEET -				DRAWN: 10-DEC-2021 J. FLORES	
SPMX						CHECKED: 10-DEC-2021 C. HERNANDEZ	
100456493-0020		GENERAL ARRANGEMENT DRAWING				APPROVED: 10-DEC-2021 C. GONZALEZ	
SULZER		PART NO. -	EN PGA1004564930020-01				1 / 3

SULZER

SUBSTITUTE FOR: GENERAL ARRANGEMENT GA ISOMETRIC AND DATA SHEET - GENERAL ARRANGEMENT DRAWING		ORIGINAL SCALE: DRAWN: 10-DEC-2021 J. FLORES CHECKED: 10-DEC-2021 C. HERNANDEZ APPROVED: 10-DEC-2021 C. GONZALEZ	
PART NO.	EN	PGA1004564930020-01	1 / 3

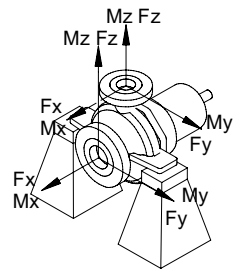
MAXIMUM NOZZLE LOADINGS

These loads may vary with nozzle size and nozzle location. The nozzle loads shown are for a nozzle located 11 ft from the end of the vessel. The nozzle loads shown are for a nozzle located 11 ft from the end of the vessel. The nozzle loads shown are for a nozzle located 11 ft from the end of the vessel.

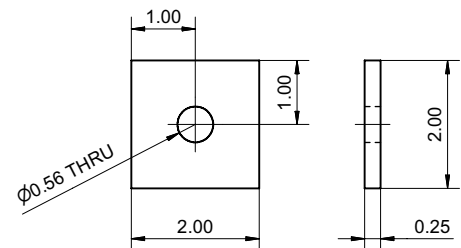
FORCE IN (Lb) MOMENTS IN (Ft-Lb)

		SUCT	DISCH
FORCE	Fx	1400	640
	Fy	1220	520
	Fz	920	800
	Fr	2020	1140
MOMENTS	Mx	3400	1960
	My	1740	1000
	Mz	2600	1480
	Mr	4620	2660

FORCE IN (Lb) MOMENTS IN (Ft-Lb)

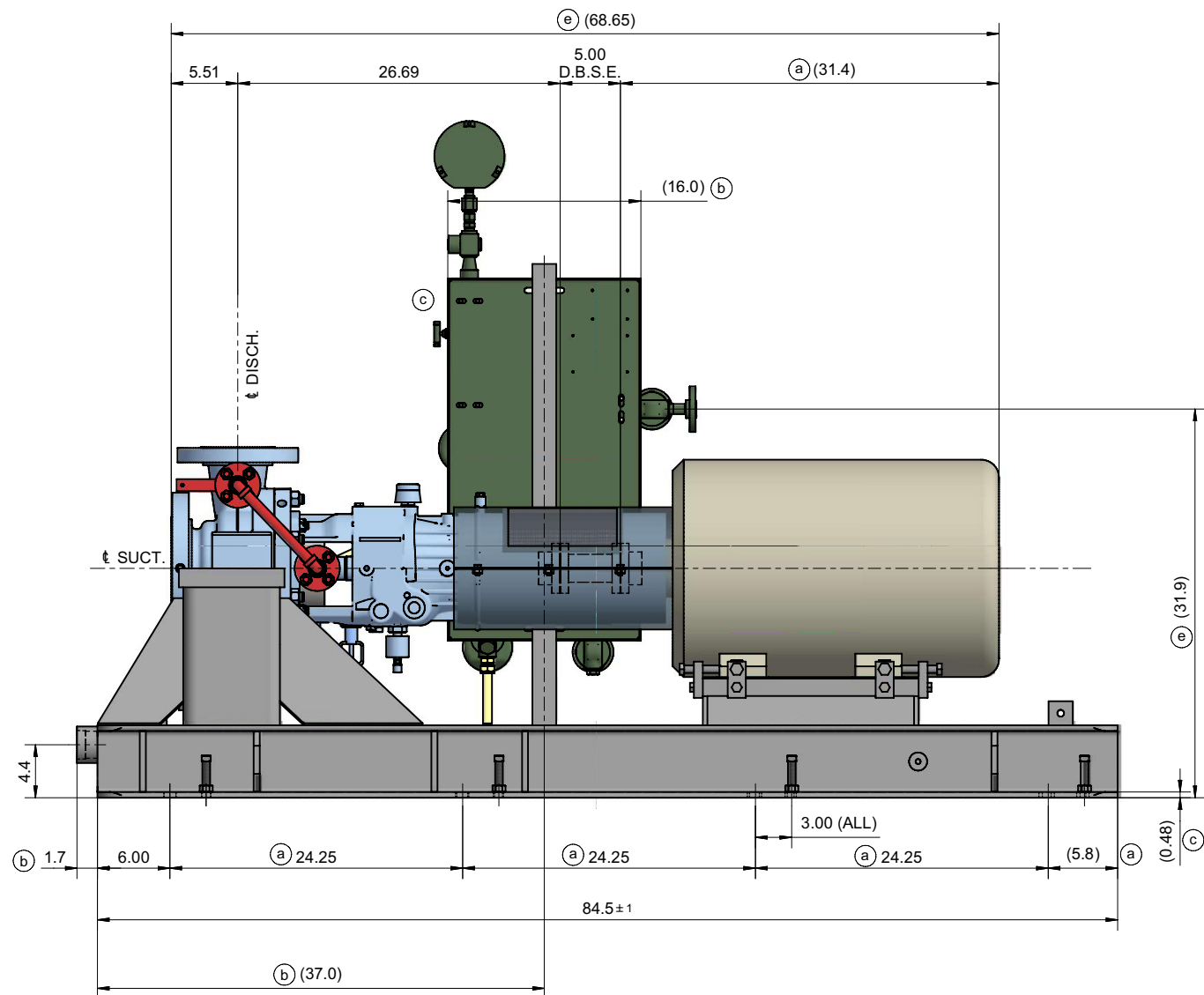
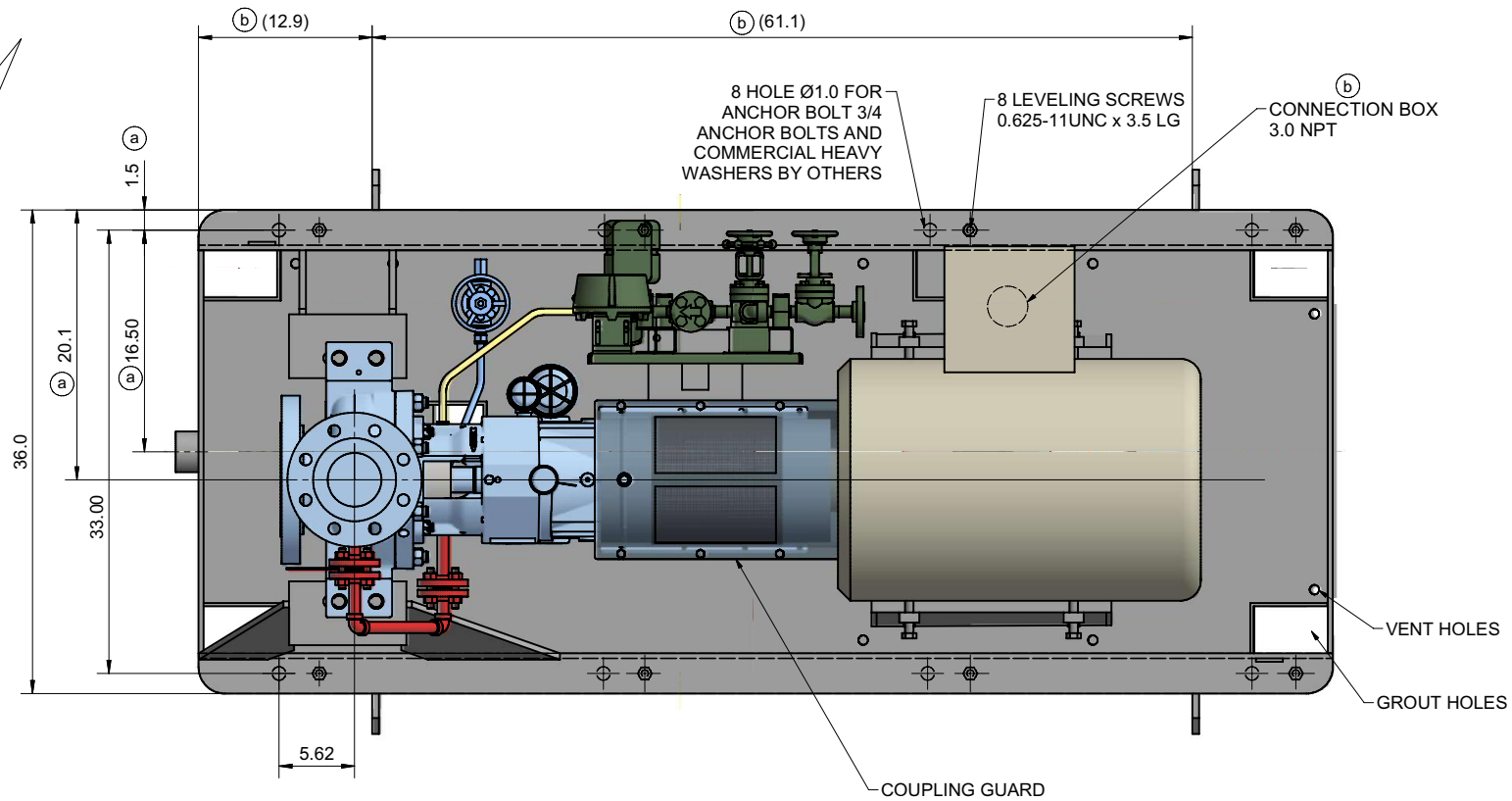


2X API		SUCT	DISCH
FORCE	Fx	1400	640
	Fy	1220	520
	Fz	920	800
	Fr	2020	1140
MOMENTS	Mx	3400	1960
	My	1740	1000
	Mz	2600	1480
	Mr	4620	2660



Technical drawing of a pump assembly, showing a side view. The drawing includes the following dimensions and labels:


- Dimensions:**
 - Overall width: 42.00
 - Base width: 38.00
 - Base height: 19.00
 - Height from base to pump centerline: 10.04
 - Height from base to top of vertical assembly: 6.00
 - Horizontal offset from base centerline to pump centerline: 2.08
- Labels:**
 - ROTATION (indicated by a curved arrow pointing right)
 - BASEPLATE
 - PUMP / MOTOR
 - (a) (pointing to the horizontal offset dimension)
 - (b) (pointing to the 6.00 height dimension)
 - (c) (pointing to a component on the vertical assembly)



CONTRACT DATA	
PURCHASER:	Air Products Manufacturing LLC.
USER:	WORLD ENERGY PARAMOUNT
JOB/PROJECT:	World Energy Renewables Project
CUST. P.O. NO.:	4505551383
SERVICE:	T-125001 RECIRCULATING PUMP
INSTALLED AT:	World Energy, Paramount, CA, USA
PUMP OEM:	SULZER PUMPS
SULZER ORDER NO.:	100456493-0020

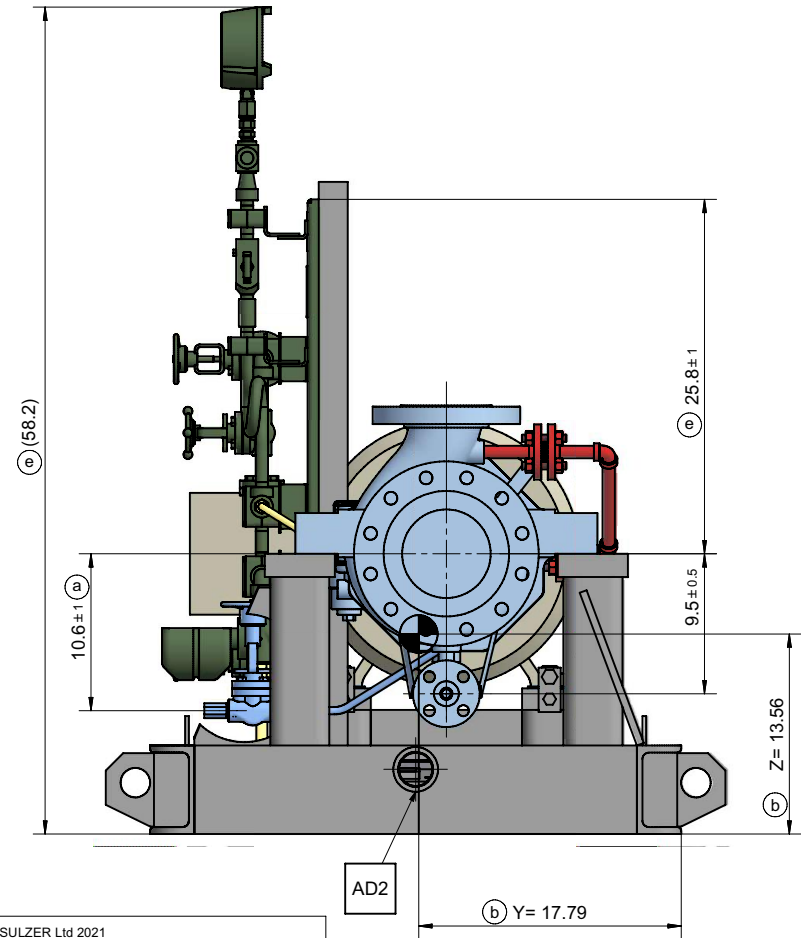
SULZER SERIAL NO.	CUSTOMER TAG NO'S	
	PUMP	DRIVER
649500	18-P-1807	18-P-1807M

<input checked="" type="checkbox"/> CERTIFIED FINAL <input type="checkbox"/> CERTIFIED FOR NOZZLE & FOUNDATION ONLY <input type="checkbox"/> PRELIMINARY ONLY	DO NOT SCALE. DIMENSIONS: INCH
	<p><u>UNLESS OTHERWISE SPECIFIED</u></p> <p>TOLERANCES</p> <p>.X ± .50</p> <p>.XX ± .12</p> <p>AUXILIARY CUSTOMER CONNECTION DIMENSIONS ± 1.0</p>

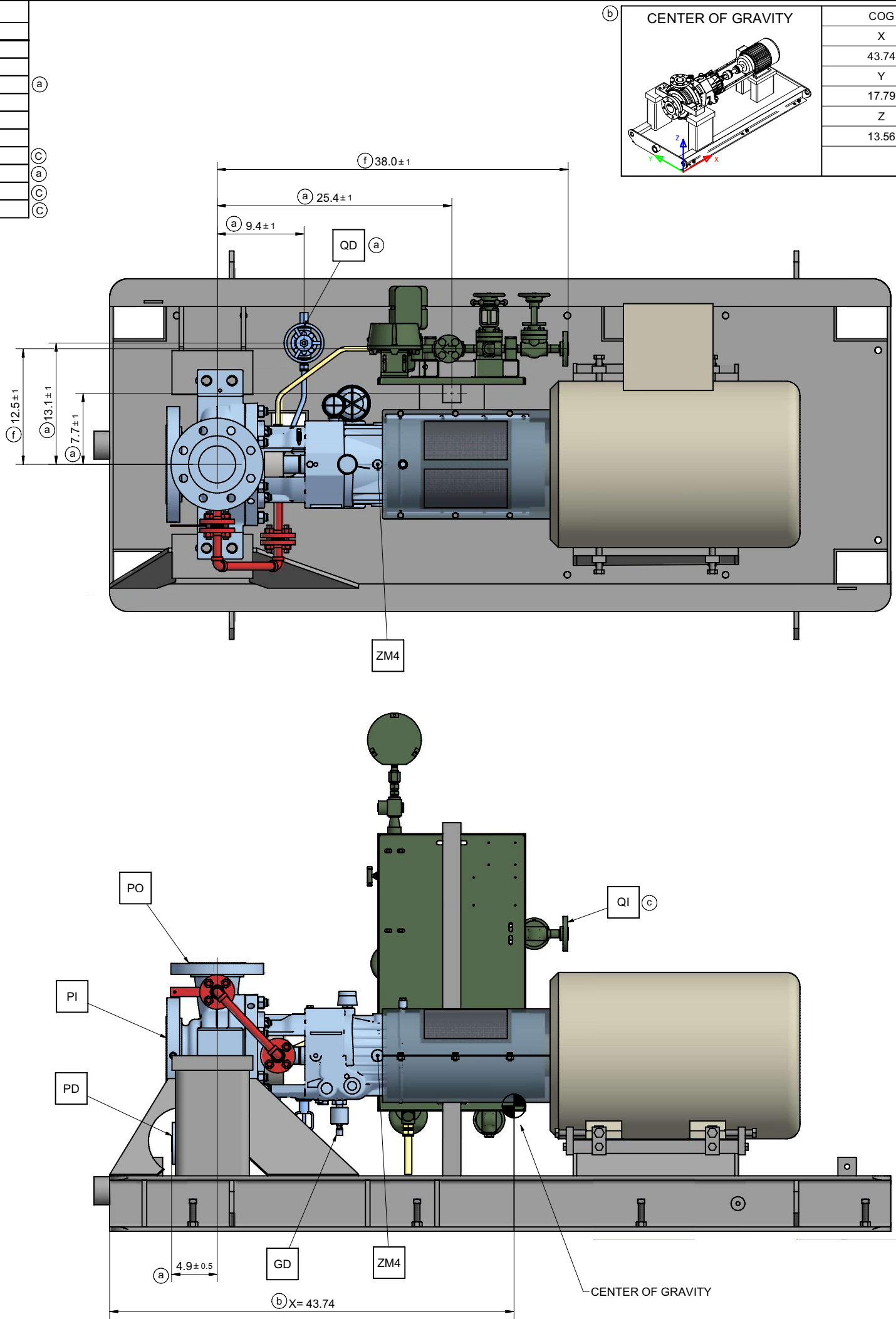
(f)	NO CHANGES IN THIS SHEET			02-FEB-2023	02-FEB-2023	02-FEB-2023
				J. FLORES	C. HERNANDEZ	C. GONZALEZ
REV.	MODIFICATION			MODIFIED	CHECKED	APPROVED
SEP. PARTS LIST:		NO	FORMAT: A1	DESIGN GROUP: -	THIRD ANGLE PROJECTION 	
REPLACED BY:				- SUBSTITUTE FOR:		ORIGINAL SCALE: -
OHH 4X6X7.5A		GENERAL ARRANGEMENT FOUNDATION AND NOZZLE			DRAWN: 10-DEC-2021 J. FLORES	
SPMX 100456493-0020					CHECKED: 10-DEC-2021 C. HERNANDEZ	
		GENERAL ARRANGEMENT DRAWING			APPROVED: 10-DEC-2021 C. GONZALEZ	
SULZER		PART NO.	EN PGA1004564930020-01			2 / 3

CONNECTION LEGEND			
ITEM	DESCRIPTION	SIZE	TYPE
PI	PUMP SUCTION NOZZLE	6"	300 RF FLANGE
PO	PUMP DISCHARGE NOZZLE	4"	300 RF FLANGE
PD	PUMP DRAIN	0.75"	300 RF FLANGE
AD2	BASE DRAIN	2"	NPT FEMALE
GD	OIL DRAIN	0.75"	NPT PLUGGED
ZM4	VIBRATION PAD	1"	FLAT SURFACE
QI	QUENCH INLET	0.50"	300 RF FLANGED
QD	GLAND DRAIN	0.50"	NPT PLUGGED
TP1	PLAN 62 STEAM TRAP - OUTLET	0.75"	TUBING
TP2	PLAN 62 - DRAIN	0.50"	NPT PLUGGED

- NOTES:
- CONNECTIONS INDICATED IN BOX □ ARE CUSTOMER CONNECTIONS POINTS.
 - BASEPLATE PREPARED FOR EPOXY GROUT AND SEAL WELDED.
 - SEAL GLAND DRAIN VALVE TO BE NORMALLY OPEN AND ROUTE OILY CONSENSATE TO SAFE LOCATION.



© SULZER Ltd 2021
ALL RIGHTS RESERVED. NO PART OF THIS
DRAWING MAY BE REPRODUCED, DISTRIBUTED OR
TRANSMITTED IN ANY FORM OR BY ANY MEANS,
ELECTRONIC OR MECHANICAL, INCLUDING
PHOTOCOPYING AND RECORDING, WITHOUT THE
EXPRESS PRIOR WRITTEN CONSENT OF SULZER
PUMPS

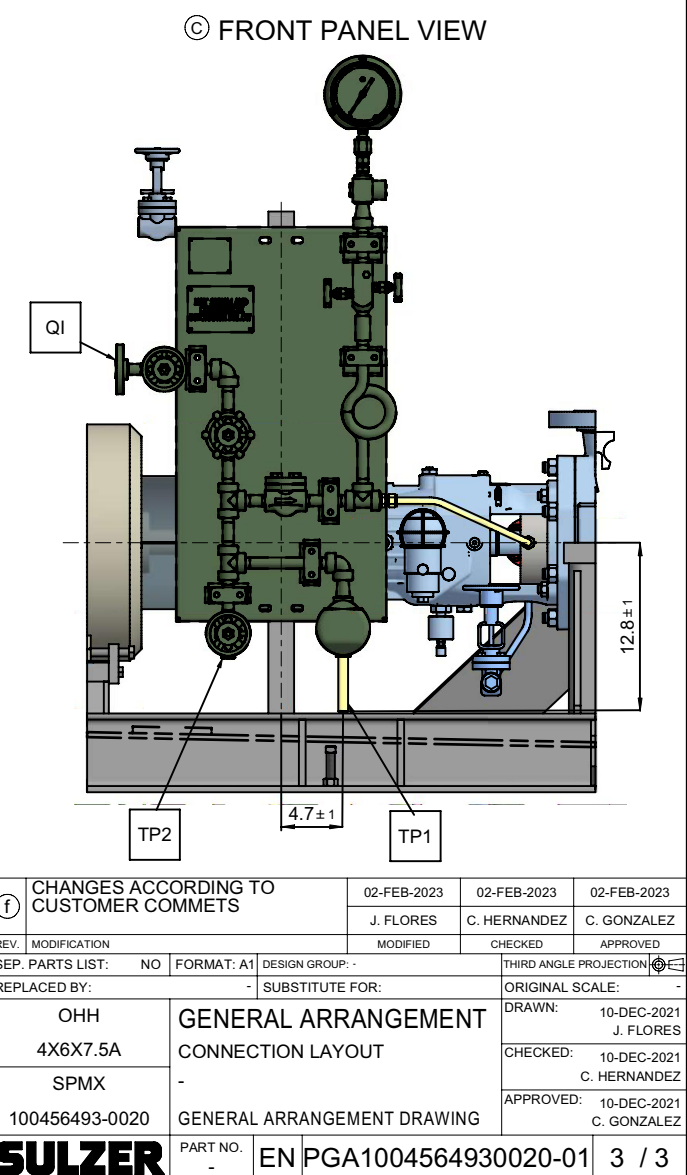


CENTER OF GRAVITY	
COG	X
	43.74
	Y
	17.79
	Z
	13.56

CONTRACT DATA	
PURCHASER:	Air Products Manufacturing LLC.
USER:	WORLD ENERGY PARAMOUNT
JOB/PROJECT:	World Energy Renewables Project
CUST. P.O. NO.:	4505551383
SERVICE:	T-125001 RECIRCULATING PUMP
INSTALLED AT:	World Energy, Paramount, CA, USA
PUMP OEM:	SULZER PUMPS
SULZER ORDER NO.:	100456493-0020

IDENTIFICATION NUMBERS		
SULZER SERIAL NO.	CUSTOMER TAG NO'S	
	PUMP	DRIVER
649500	18-P-1807	18-P-1807M

<input checked="" type="checkbox"/> CERTIFIED FINAL	DO NOT SCALE. DIMENSIONS: INCH
<input type="checkbox"/> CERTIFIED FOR NOZZLE & FOUNDATION ONLY	UNLESS OTHERWISE SPECIFIED TOLERANCES .X ± .50 .XX ± .12
<input type="checkbox"/> PRELIMINARY ONLY	AUXILIARY CUSTOMER CONNECTION DIMENSIONS ± 1.0



CHANGES ACCORDING TO CUSTOMER COMMENTS		02-FEB-2023	02-FEB-2023	02-FEB-2023
J. FLORES		C. HERNANDEZ	C. GONZALEZ	
REV.	MODIFICATION	NO	FORMAT: A1	DESIGN GROUP: -
SEP. PARTS LIST:	NO	FORMAT: A1	DESIGN GROUP: -	THIRD ANGLE PROJECTION
REPLACED BY:	-	SUBSTITUTE FOR:	ORIGINAL SCALE:	-
OHH	4X6X7.5A	GENERAL ARRANGEMENT CONNECTION LAYOUT	DRAWN:	10-DEC-2021 J. FLORES
SPMX	-	GENERAL ARRANGEMENT DRAWING	CHECKED:	10-DEC-2021 C. HERNANDEZ
100456493-0020	-	GENERAL ARRANGEMENT DRAWING	APPROVED:	10-DEC-2021 C. GONZALEZ
SULZER	PART NO. -	EN PGA1004564930020-01	3 / 3	