

Ⓢ

a

(a)

(b)

DRIVER

OTHERWISE SPECIFIED

THIRD ANGLE PROJ

(a)

APPROVED

564930010-01

a

(b)

©

1. **CAUTION!** CAREFULLY CHECK ALIGNMENT BEFORE STARTING UNIT. ALL HOLES IN FLANGES STRADDLE CENTERLINES. **THE CONNECTION OF PIPES TO THE UNIT HAS TO BE STRESS FREE.**
2. COLORS ARE NOT INTENDED TO REPRESENT "AS SHIPPED" PAINT REQUIREMENTS. THEY ARE FOR QUICK IDENTIFICATION OF PIPING AND EQUIPMENT.
3. SEE DRIVER, SEAL SYSTEM, MECHANICAL SEAL OR COUPLING DRAWINGS FOR MAJOR DETAILS.
4. DIMENSIONS BETWEEN () ARE REFERENCE ONLY
5. FITTED THERMAL BLANKET TO BE SUPPLIED BY SULZER.

© SULZER Ltd 2021
ALL RIGHTS RESERVED. NO PART OF THIS
DRAWING MAY BE REPRODUCED, DISTRIBUTED OR
TRANSMITTED IN ANY FORM OR BY ANY MEANS,
ELECTRONIC OR MECHANICAL, INCLUDING
PHOTOCOPYING AND RECORDING, WITHOUT THE
EXPRESS **PRIOR** WRITTEN CONSENT OF SULZER
PUMPS

a

- 8 LEVELING SCREWS
0.625-11UNC x 3.5 LG

-8x ALIGNMENT SCREWS

2x EARTHING LUGS
DIAGONALLY-OPPOSED
9/16 HOLE PROVIDED, 1/4 THK

-2x EARTHING LUGS
1/2_13UNCx1.75L

4x 1/2-13 UNC
(SUPPLIED BY SULZER)

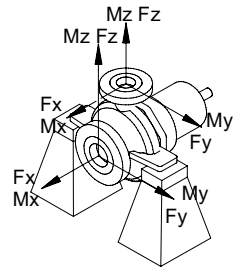
MAXIMUM NOZZLE LOADINGS

Units must comply with 2.0 times of the forces shown in API 610^{11th}

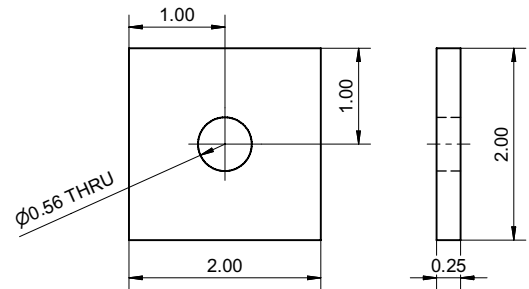
FORCE IN (Lb) MOMENTS IN (Ft-Lb)

2X API		SUCT	DISCH
FORCE	Fx	800	480
	Fy	640	400
	Fz	520	600
	Fr	1140	860
MOMENTS	Mx	1960	1400
	My	1000	750
	Mz	1480	1060
	Mr	2660	1900

FORCE IN (Lb) MOMENTS IN (Ft-Lb)

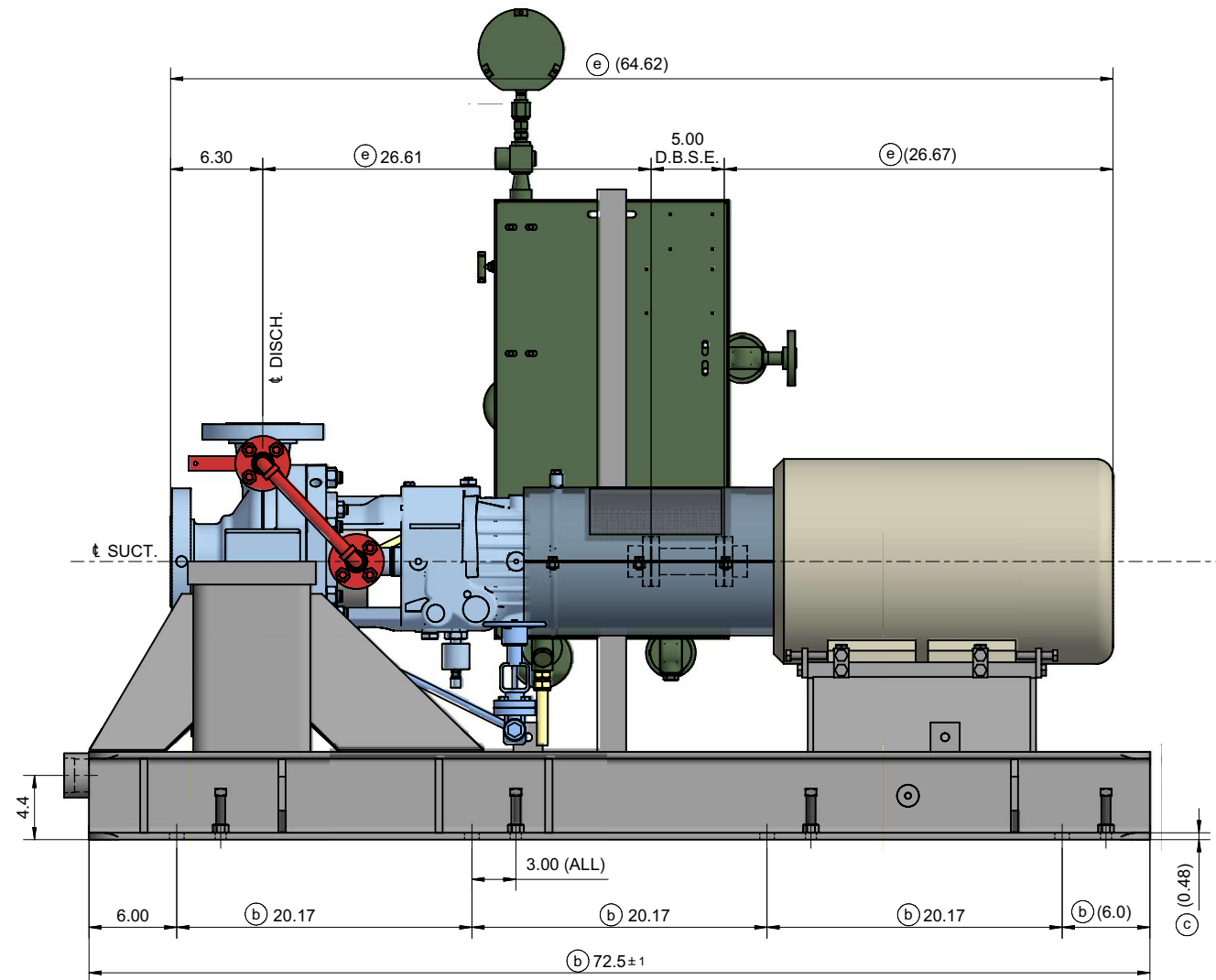
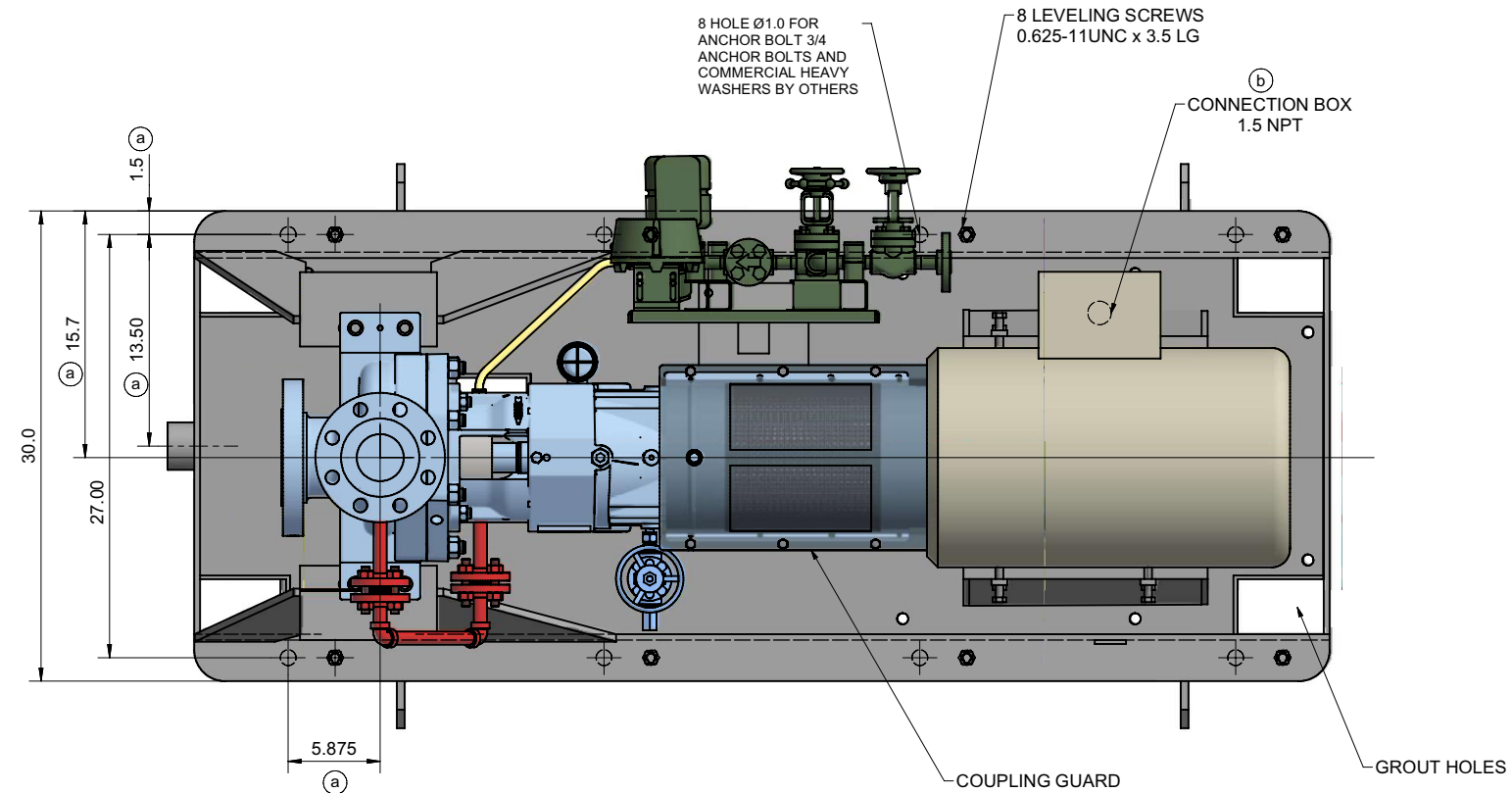


2X API		SUCT	DISCH
FORCE	Fx	800	480
	Fy	640	400
	Fz	520	600
	Fr	1140	860
MOMENTS	Mx	1960	1400
	My	1000	750
	Mz	1480	1060
	Mr	2660	1900



Technical drawing of a pump assembly. The drawing shows a side view of the pump with various components labeled. The pump is mounted on a baseplate. A vertical shaft is labeled "BASEPLATE" and "PUMP / MOTOR". A curved arrow indicates "ROTATION". Dimensions are provided: a horizontal dimension of 32.00 (total width 36.00) and a vertical dimension of 19.00. A detail view (a) shows a circular feature with a diameter of 0.74. A detail view (b) shows a vertical dimension of 6.00. The drawing is a technical illustration of a mechanical assembly, likely a pump or motor, showing its components and dimensions.

© SULZER Ltd 2021
ALL RIGHTS RESERVED. NO PART OF THIS
DRAWING MAY BE REPRODUCED, DISTRIBUTED OR
TRANSMITTED IN ANY FORM OR BY ANY MEANS,
ELECTRONIC OR MECHANICAL, INCLUDING
PHOTOCOPYING AND RECORDING, WITHOUT THE
EXPRESS **PRIOR** WRITTEN CONSENT OF SULZER
PUMPS



CONTRACT DATA	
PURCHASER:	Air Products Manufacturing LLC.
USER:	WORLD ENERGY PARAMOUNT LLC
JOB/PROJECT:	World Energy Renewables Project
CUST. P.O. NO.:	4505551383
SERVICE:	T-10003 RECIRCULATING PUMP
INSTALLED AT:	World Energy, Paramount, CA, USA
PUMP OEM:	SULZER PUMPS
SULZER ORDER NO.:	100456493-0010


SULZER SERIAL NO.	CUSTOMER TAG NO'S	
	PUMP	DRIVER
649499	18-P-1805	18-P-1805M

DO NOT SCALE. DIMENSIONS: INCH

UNLESS OTHERWISE SPECIFIED
TOLERANCES

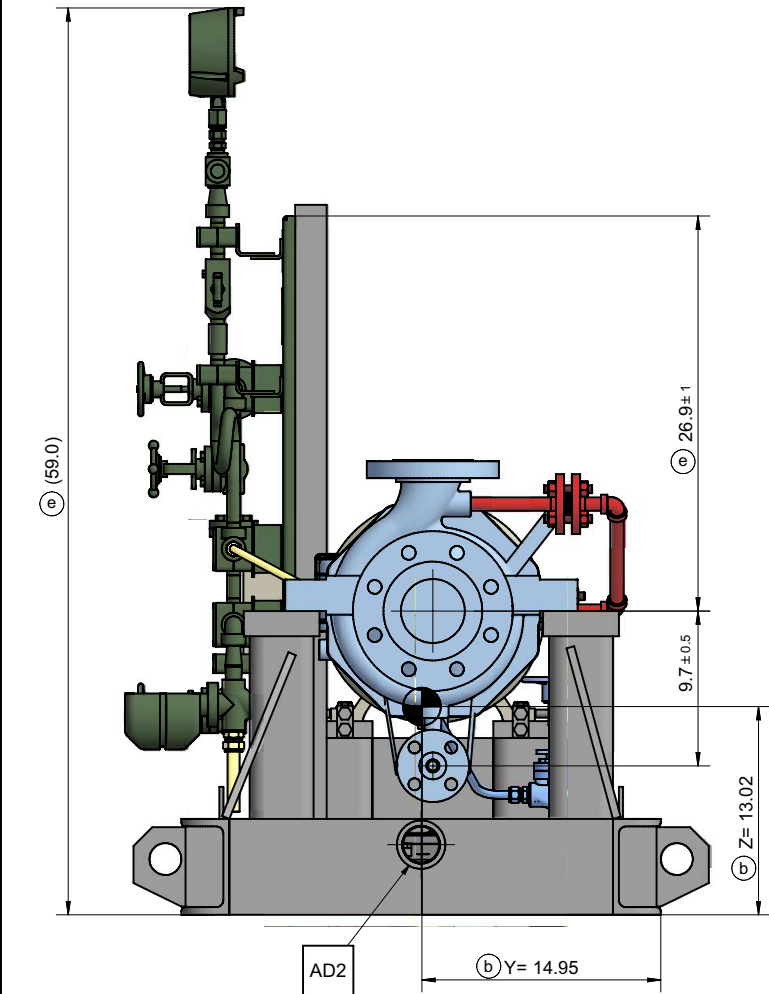
.X ± .50
.XX ± .12

AUXILIARY CUSTOMER CONNECTION DIMENSIONS ± 1.0

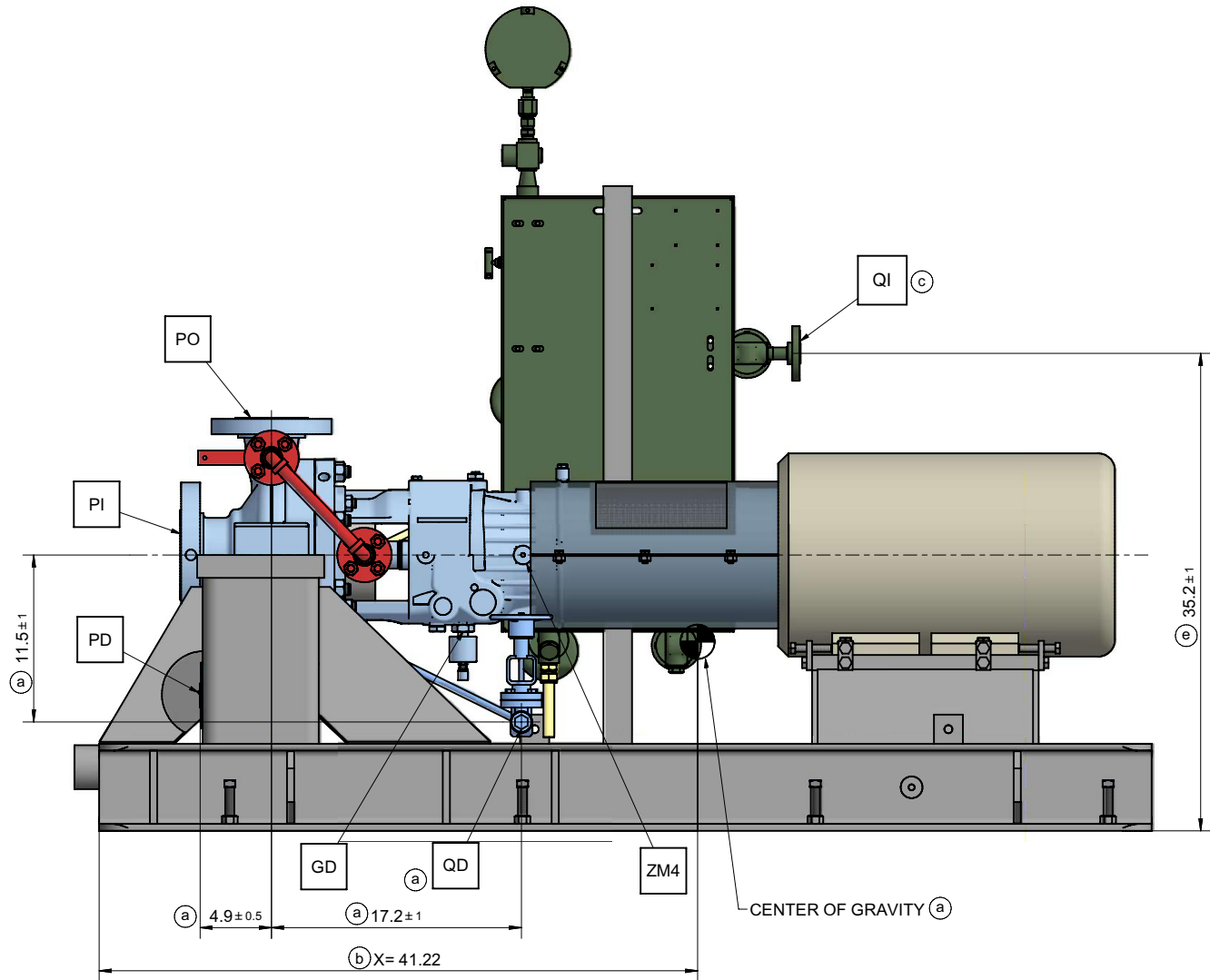
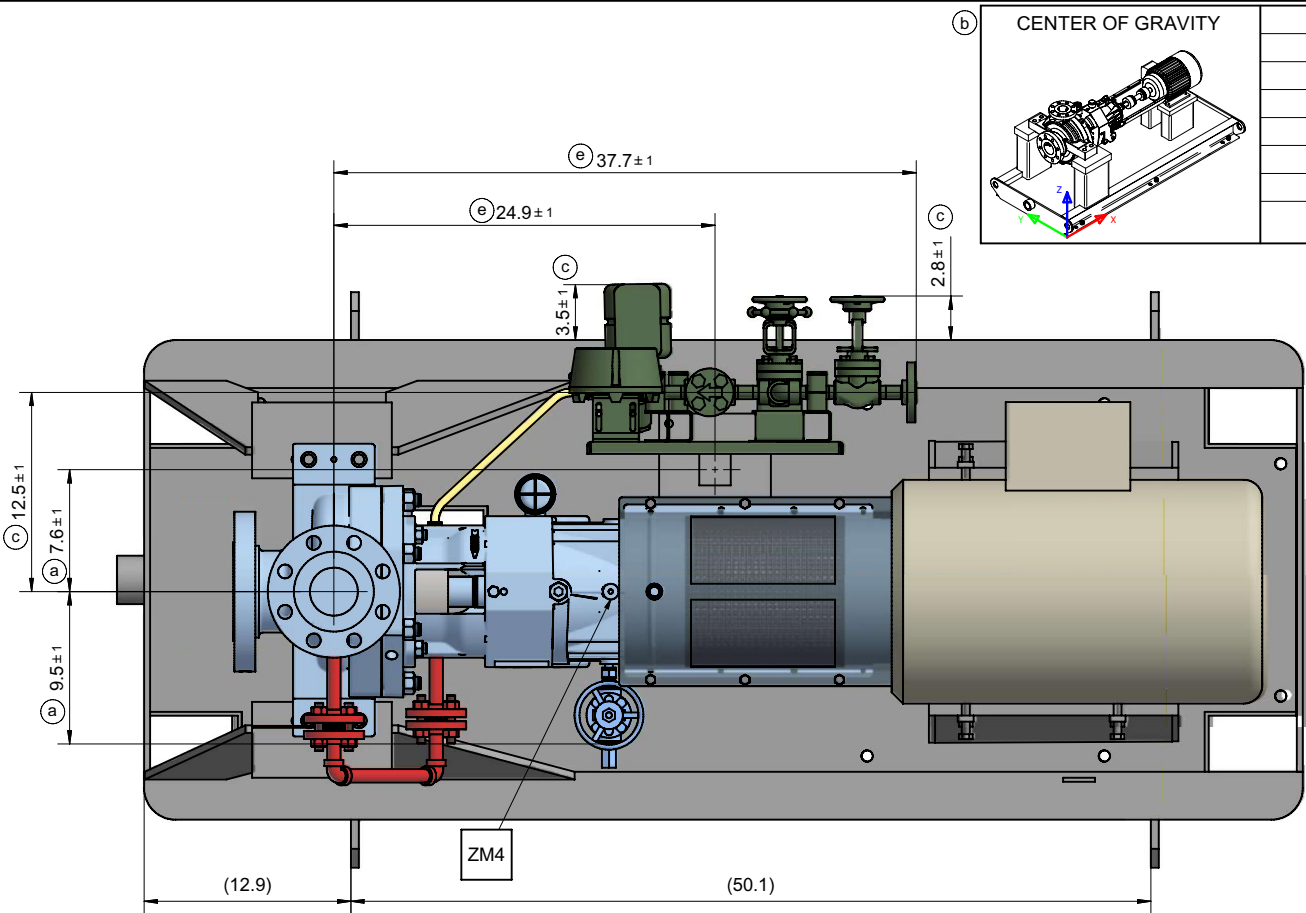
(f)	NO CHANGES IN THIS SHEET			08-FEB-2023	08-FEB-2023	08-FEB-2023
				J. FLORES	C. HERNANDEZ	C. GONZALEZ
REV.	MODIFICATION			MODIFIED	CHECKED	APPROVED
SEP. PARTS LIST:	NO	FORMAT: A1	DESIGN GROUP: -	THIRD ANGLE PROJECTION 		
REPLACED BY: -				SUBSTITUTE FOR:		ORIGINAL SCALE: -
OHH 3X4X8A		GENERAL ARRANGEMENT FOUNDATION AND NOZZLE			DRAWN: 10-DEC-2021 J. FLORES	
SPMX -					CHECKED: 10-DEC-2021 C. HERNANDEZ	
100456493-0010		GENERAL ARRANGEMENT DRAWING			APPROVED: 10-DEC-2021 C. GONZALEZ	
SULZER		PART NO. -	EN PGA1004564930010-01			2 / 3

CONNECTION LEGEND			
ITEM	DESCRIPTION	SIZE	TYPE
PI	PUMP SUCTION NOZZLE	4"	300 RF FLANGE
PO	PUMP DISCHARGE NOZZLE	3"	300 RF FLANGE
PD	PUMP DRAIN	0.75"	300 RF FLANGE
AD2	BASE DRAIN	2"	NPT FEMALE
GD	OIL DRAIN	0.75"	NPT PLUGGED
ZM4	VIBRATION PAD	1"	FLAT SURFACE
QI	QUENCH INLET	0.50"	300 RF FLANGE
QD	GLAND DRAIN	0.50"	NPT PLUGGED
TP1	PLAN 62 STEAM TRAP - OUTLET	0.75"	TUBING
TP2	PLAN 62 - DRAIN	0.50"	NPT PLUGGED

- NOTES:
- CONNECTIONS INDICATED IN BOX □ ARE CUSTOMER CONNECTIONS POINTS.
 - BASEPLATE PREPARED FOR EPOXY GROUT AND SEAL WELDED.
 - MOTOR MUST BE REMOVED BEFORE TO GROUT BASEPLATE.
 - SEAL GLAND DRAIN VALVE TO BE NORMALLY OPEN AND ROUTE OILY CONSENSATE TO SAFE LOCATION.



© SULZER Ltd 2021
ALL RIGHTS RESERVED. NO PART OF THIS
DRAWING MAY BE REPRODUCED, DISTRIBUTED OR
TRANSMITTED IN ANY FORM OR BY ANY MEANS,
ELECTRONIC OR MECHANICAL, INCLUDING
PHOTOCOPYING AND RECORDING, WITHOUT THE
EXPRESS PRIOR WRITTEN CONSENT OF SULZER
PUMPS

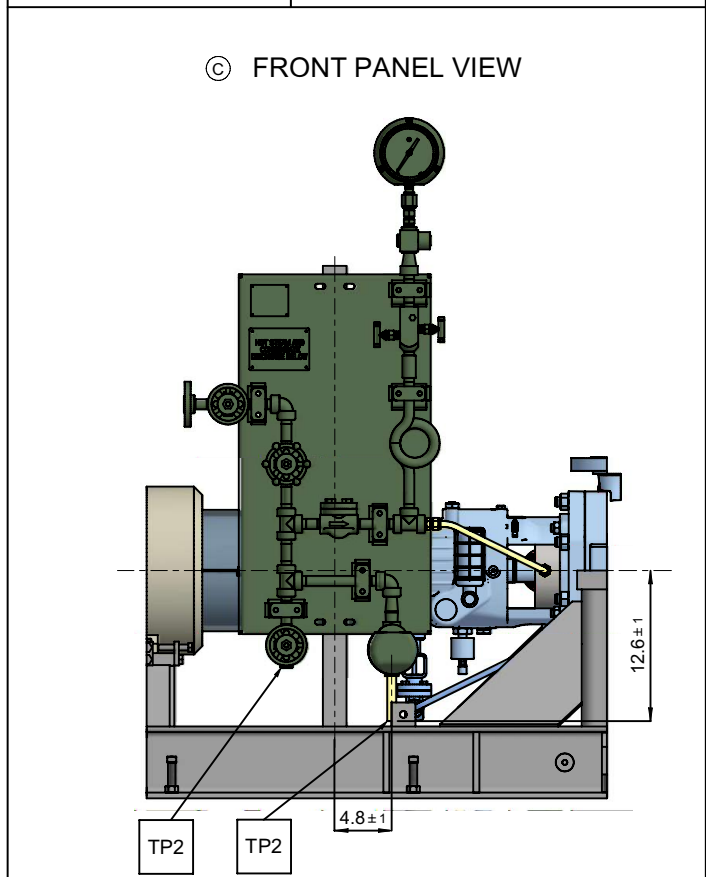


CENTER OF GRAVITY	
COG	X
	41.22
	Y
	14.95
	Z
	13.02

CONTRACT DATA	
PURCHASER:	Air Products Manufacturing LLC.
USER:	WORLD ENERGY PARAMOUNT LLC
JOB/PROJECT:	World Energy Renewables Project
CUST. P.O. NO.:	4505551383
SERVICE:	T-10003 RECIRCULATING PUMP
INSTALLED AT:	World Energy, Paramount, CA, USA
PUMP OEM:	SULZER PUMPS
SULZER ORDER NO.:	100456493-0010

IDENTIFICATION NUMBERS		
SULZER SERIAL NO.	CUSTOMER TAG NO'S	
	PUMP	DRIVER
649499	18-P-1805	18-P-1805M

<div><input checked="" type="checkbox"/> CERTIFIED FINAL</div> <div><input type="checkbox"/> CERTIFIED FOR NOZZLE & FOUNDATION ONLY</div> <div><input type="checkbox"/> PRELIMINARY ONLY</div>	DO NOT SCALE. DIMENSIONS: INCH	
	<u>UNLESS OTHERWISE SPECIFIED</u>	
	TOLERANCES	
	.X ± .50	
	.XX ± .12	
AUXILIARY CUSTOMER CONNECTION DIMENSIONS ± 1.0		



NO CHANGES IN THIS SHEET			
REV.	MODIFICATION	08-FEB-2023	08-FEB-2023
J. FLORES	C. HERNANDEZ	C. GONZALEZ	C. GONZALEZ
SEP. PARTS LIST:	NO	FORMAT: A1	DESIGN GROUP: -
REPLACED BY:	-	SUBSTITUTE FOR:	THIRD ANGLE PROJECTION
OHH	3X4X8A	GENERAL ARRANGEMENT	DRAWN: 10-DEC-2021
SPMX	-	CONNECTION LAYOUT	J. FLORES
100456493-0010	GENERAL ARRANGEMENT DRAWING	APPROVED: 10-DEC-2021	C. HERNANDEZ
SULZER	PART NO. -	EN PGA1004564930010-01	3 / 3