


TOLERANCES (UNLESS OTHERWISE STATED) – (in)	
FRACTIONS	±1/4"
XX	±.05"
X.XX	±.01"
X.XXX	±.005"
ANGULAR	±1°

E	CGR	VRM	VRM	REVISED PER ECN 18048, INCORP THRU REV D	18 NOV 2022
REV	PREP'D	CHK'D	APPR'D	DESCRIPTION	DATE

PROJECT	PER P.O.
CUSTOMER	PER P.O.
ENGINEERING	PER P.O.
END USER	PER P.O.
LOCATION	PER P.O.
JC REF. No.	

CONFIGURATION	GNP / CODE	DRG. LOC.	DESIGN AUTH.	SCALE
PLAN 62		TULSA	US74EN	NONE
 Seal Support System		DRAWING No.		ISSUE
		LCPS3028661 1 of 2		E

PURCHASER'S NAME:	Air Products Manufacturing LLC
END USER'S NAME:	WORLD ENERGY PARAMOUNT LLC
PROJECT NAME / No.:	World Energy Renewables Project
PURCHASER'S P.O. No.:	4505551383
SITE / LOCATION:	Paramount, CA, USA
EQUIPMENT SERVICE:	T-10003 RECIRCULATING PUMP
PUMP TAG NUMBER:	18-P-1805
PUMP SERIAL NUMBER:	649499
SULZER SALES ORDER No.	100456493-0010

John Crane Inc.

TULSA, OKLAHOMA 74110 U.S.A.

MFG. S.N.

LCPS3028661

PART NUMBER

232 PSI at 430°F

MAXIMUM ALLOWABLE INLET PRESSURE

232 PSI

MAXIMUM OUTLET PRESSURE

316 SS WT'D

## COMPONENTS

[illegible]

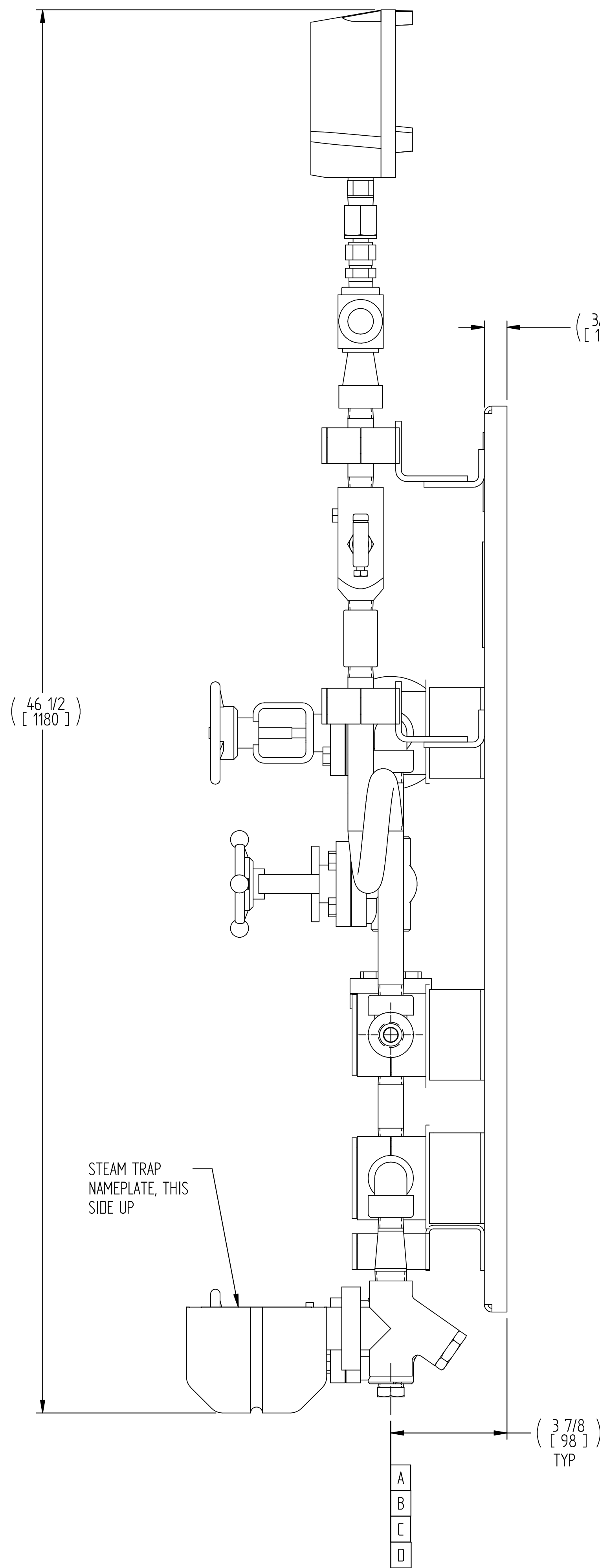
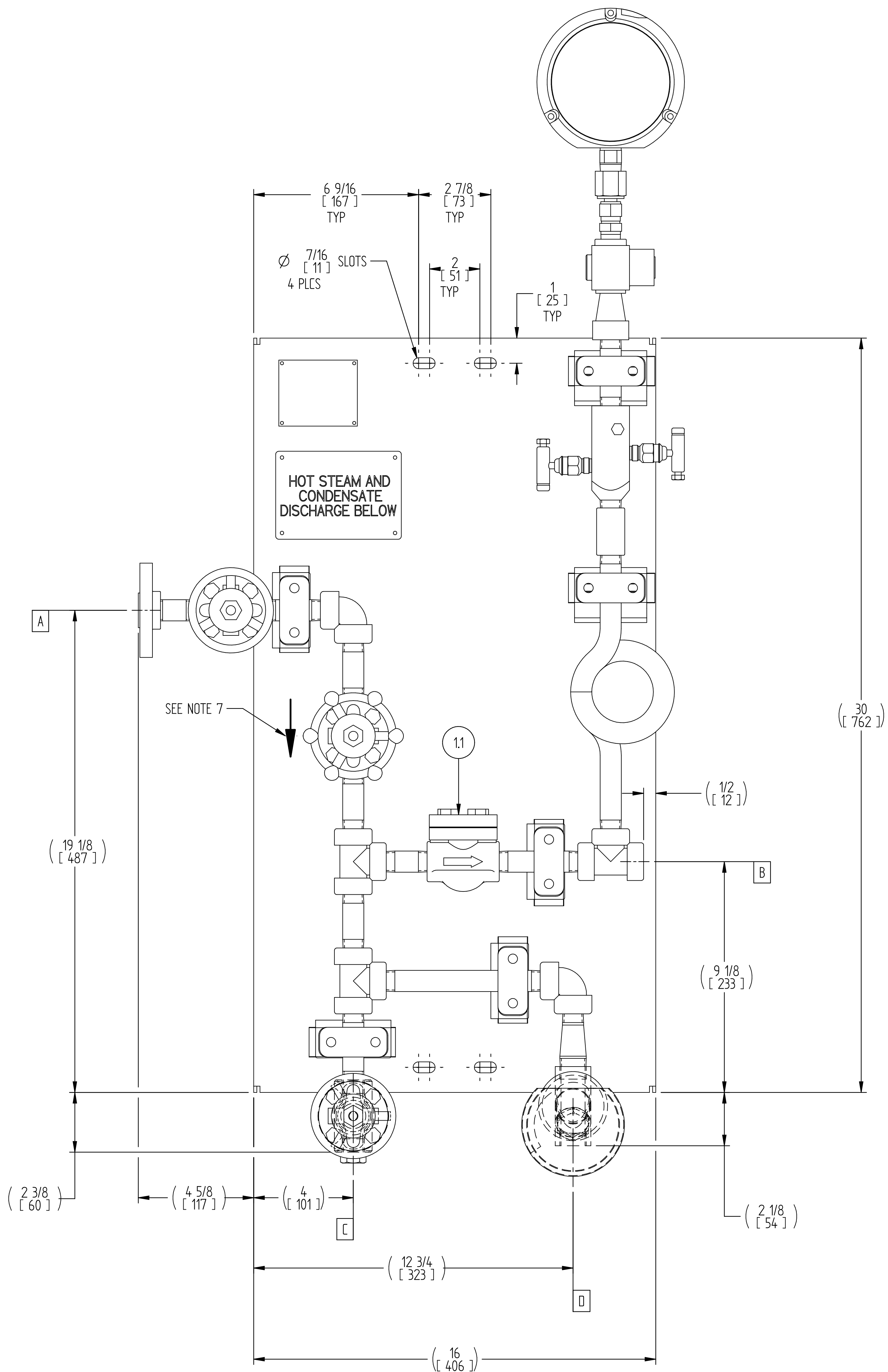
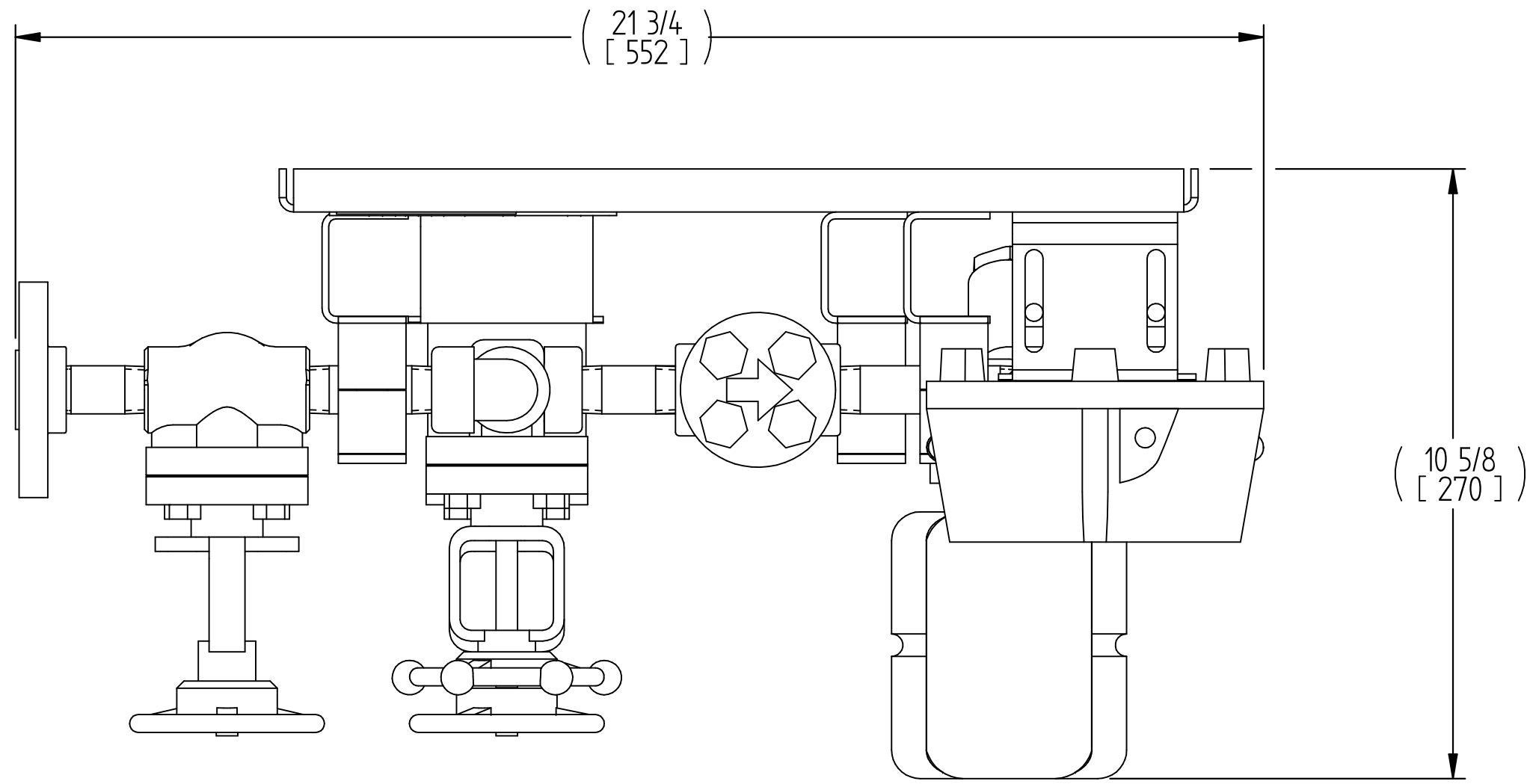
## TERMINATIONS AND CONNECTIONS

[illegible]

## DESCRIPTION

PLAN 62 STEAM PANEL





REFERENCE CODES & STANDARDS

ASME B16.5 FOR FLANGES

INSPECTION AND TESTING

1. AIR CHECK FOR COMPLETED UNIT TO BE PERFORMED ONLY.
2. CALIBRATION FOR PRESSURE GAUGE PER INSTRUMENT MANUFACTURER STANDARD.

SURFACE FINISH

STAINLESS STEEL COMPONENTS TO BE BARE. CS COMPONENTS PER JOHN CRANE FLUID CONTROL GROUP STANDARD.

SYSTEM WEIGHTS AND VOLUMES

ESTIMATED DRY WEIGHT (FOR ACTUAL UNIT WEIGHT REFER TO UNIT TAG)	75 lbs
WET WEIGHT (Nominal)	N/A lbs
RESERVOIR NOMINAL VOLUME	N/A Gal
OPERATING VOLUME AT NORMAL LEVEL	N/A Gal
ACCUMULATOR NOMINAL VOLUME	N/A Gal

INSTRUMENTS ELECTRICAL CLASSIFICATION


NOT APPLICABLE, THERE ARE NO ELECTRICAL INSTRUMENTS ON THIS ASSEMBLY DRAWING.

NOTES:

1. ALL DIMENSIONS ARE IN INCHES.
2. ALL DIMENSIONS IN [ ] ARE IN MILLIMETERS.
3. ALL DIMENSIONS IN ( ) ARE REFERENCE DIMENSIONS.
4. PIPE CLAMPS ARE USED AS REQUIRED FOR SUPPORT.
5. PIPING TO BE SCH 160.
6. TUBE FITTINGS TO BE SWAGelok.
7. ARROW SHOWN TO INDICATE THE FLUID DIRECTION. IT WON'T BE MARKED ON PANEL BUT IT MIGHT BE MARKED ON THE VALVE PER MANUFACTURER STANDARD.

DESCRIPTION

PLAN 62 STEAM PANEL

CONFIGURATION	GPN / CODE	ORG. LOC.	DESIGN AUTH.	SCALE
PLAN 62		TULSA	US74EN	NONE
		DRAWING No.		ISSUE
		LCPS3028661		E