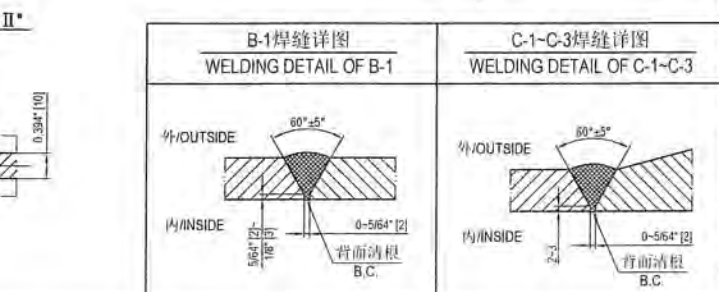
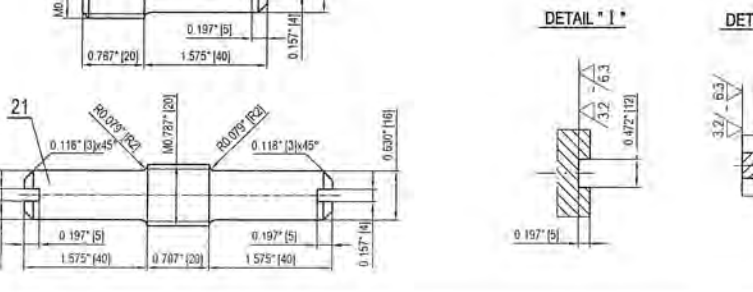
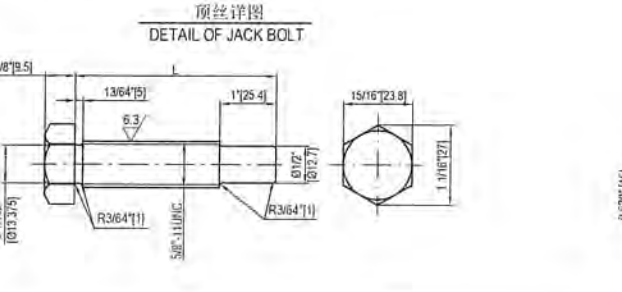
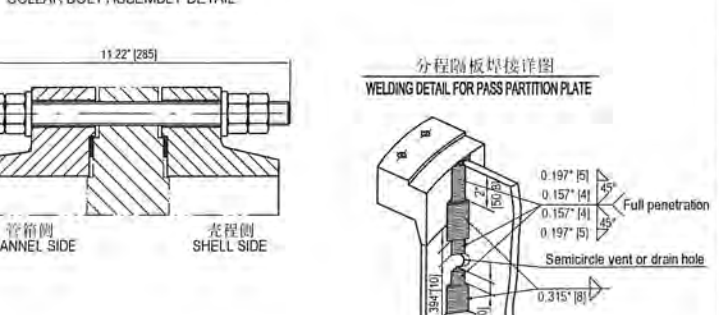
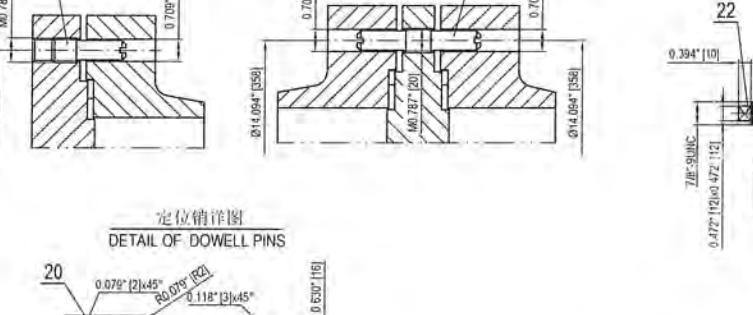
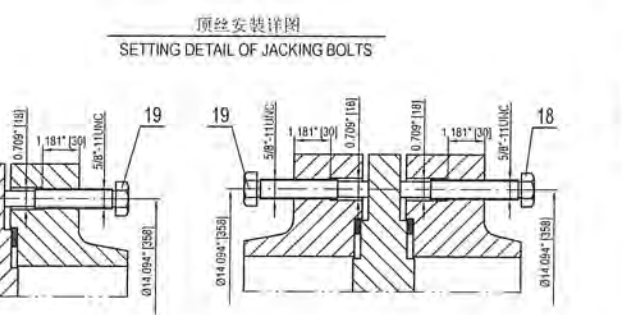
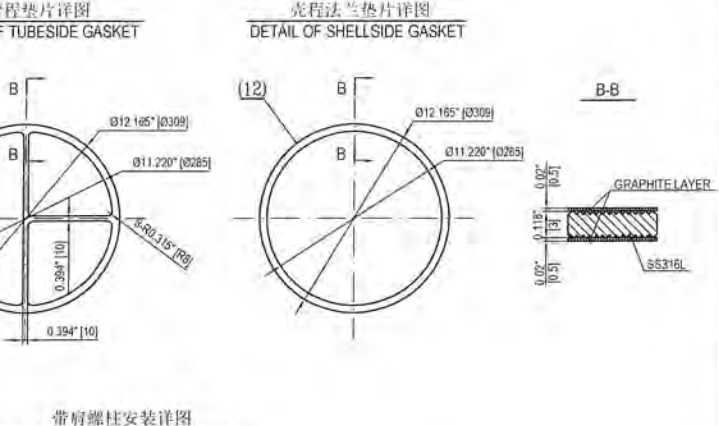
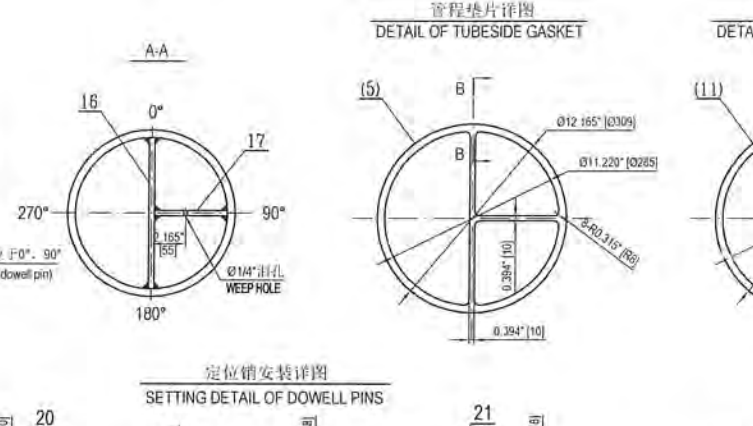
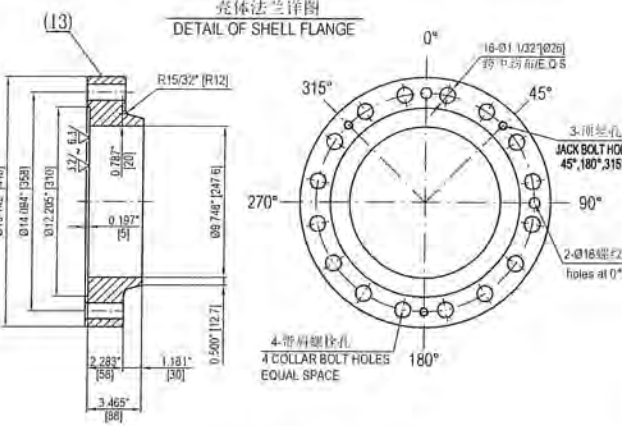
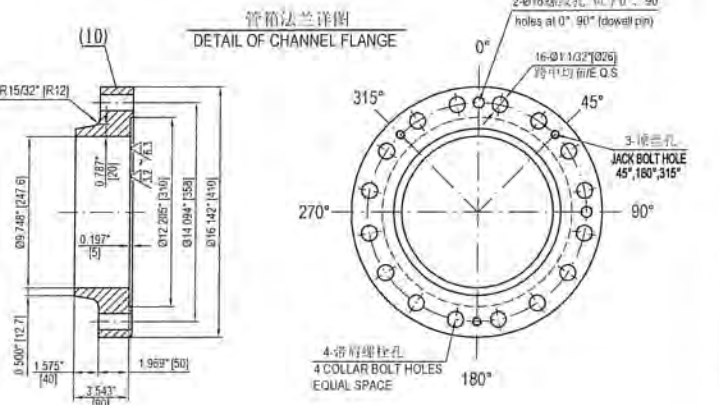
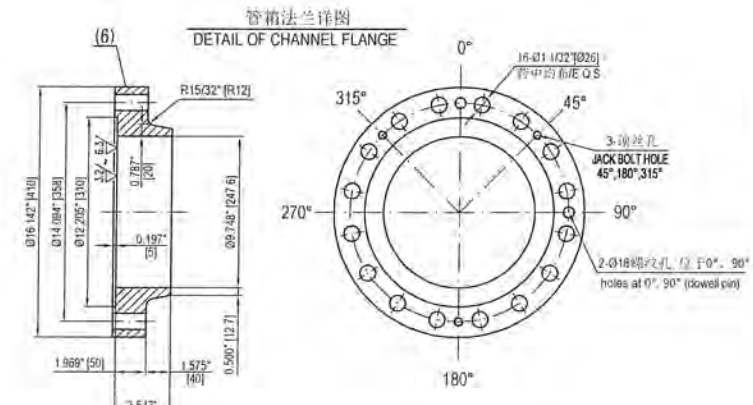
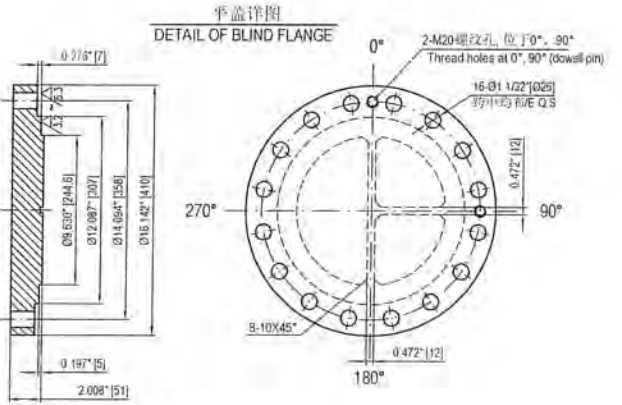


**NOTE**  
 1. 垫片为KAMMPROFILE(或FLEXITALLIG或LAMONS)制作垫片,由3mm厚SS316L金属板上下两层0.5mm厚的石墨层组成。  
 The gasket is KAMMPROFILE (either FLEXITALLIG or LAMONS make); thickness of peripheral gaskets shall be 3mm+0.5mm+0.5mm graphite layers in both sides, serrated metal material is SS316L.  
 2. 垫片系数:  
 Gasket factor is m=2, y=2500 psi.  
 3. 所有设备法兰密封面(包括分程隔板端面)均留有0.125"未加工余量。  
 Future Machining allowance of 0.125" has been considered on all girth flanges gasket seating face (including Pass-partition surface).  
 4. 所有设备法兰密封面(分程隔板端面除外)平面度应为±0.003"。  
 The flatness of gasket seating peripheral surface on body flanges tolerance shall be ±0.003" as per API 650 clause 9.8.3.



ITEM NO.	QTY	DESCRIPTION	UNIT	QTY	WEIGHT (kg)	TOTAL
22	4-2	带肩螺栓 7/8"-9UNC-2A COLLAR BOLTS	SA-193 Gr B7M	0.9	3.6	
21	2	定位销 2 DOWEL PINS 2	SS 304	0.1	0.2	
20	2	定位销 1 DOWEL PINS 1	SS 304	0.1	0.2	
19	6	顶丝 5/8"-11UNC L=90 JACKSCREW	SS 304	0.1	0.6	
18	3	顶丝 5/8"-11UNC L=100 JACKSCREW	SS 304	0.1	0.3	
17	1	分程隔板 t=10 PASS PARTITION	SA-516 Gr 70N		4.1	
16	1	分程隔板 t=10 PASS PARTITION	SA-516 Gr 70N		8.4	
15	1	2.1 椭圆形头 2.1 ELLIPTICAL HEAD	SA-240 316L		8.5	
14	1	壳程壳体 O.D 273X12.7 L=2159 SHELL	SA-312 TP316L		174	
13	1	壳程法兰 SHELL FLANGE	SA-182 F316L		37.5	
12	1+2	壳程垫片 SHELL GASKET	见注1/SEE NOTE1		/	
11	1+2	管箱垫片 CHANNEL GASKET	见注1/SEE NOTE1		/	
10	1	管箱法兰 2 CHANNEL FLANGE 2	SA-265 Gr 2H		34.0	
9	64-8	重型六角螺母 7/8"-9UNC-2B HEX HEAVY NUTS	SA-194 Gr 2HM	0.2	16.0	
8	12+2	全螺纹螺栓 7/8"-9UNC-2A L=285 FULL THREADED STUD BOLTS	SA-193 Gr B7M	0.9	10.8	
7	1	管箱壳体 O.D 273X12.7 L=250 CHANNEL SHELL	SA-105 Gr B		20.4	
6	1	管箱法兰 1 CHANNEL FLANGE 1	SA-265 Gr 2H		34.0	
5	1+2	管箱垫片 CHANNEL GASKET	见注1/SEE NOTE1		/	
4	1	平盖 FLAT COVER	SA-265 Gr 2H		49.4	
3	64-8	ASME PCC-1-2019 APPENDIX M 硬面圆垫圈 7/8" t=5.5 HARDENED CIRCLE WASHER	TYPE 4	0.1	8.4	
2	64-8	ASME B18.2.2-2022 重型六角螺母 7/8"-9UNC-2B HEX HEAVY NUTS	SA-194 Gr 2H	0.2	12.8	
1	16-2	ASME B18.2.1-2012(2021) 全螺纹螺栓 7/8"-9UNC-2A L=220 FULL THREADED STUD BOLTS	SA-193 Gr B7	0.7	11.2	

**AIR PRODUCTS** world energy **FLUOR**

Project Name: World Energy Renewables Project  
 Project No: RFQ No  
 Purchase Order Number: 450588221  
 PD/Contract No  
 Air Products Open Text document number: EN207122-WUXI-9V3-00177  
 Project Area  
 Client: WORLD ENERGY PARAMOUNT  
 Client Doc No

REV	DATE	DESCRIPTION	DESIGNER	CHECKER	DATE
04	2023.5.29	设计 AS BUILT	Zhong Zhang	Chengqian Yuan	29-May-23
03	2023.5.29	供批准/ISSUED FOR APPROVAL	Zhong Zhang	Chengqian Yuan	20-Feb-23
02	2023.5.29	供批准/ISSUED FOR APPROVAL	Zhong Zhang	Chengqian Yuan	12-Dec-22
01	2023.5.29	供批准/ISSUED FOR APPROVAL	Zhong Zhang	Chengqian Yuan	22-Sep-22
00	2023.5.29	供批准/ISSUED FOR APPROVAL	Zhong Zhang	Chengqian Yuan	28-Jun-22

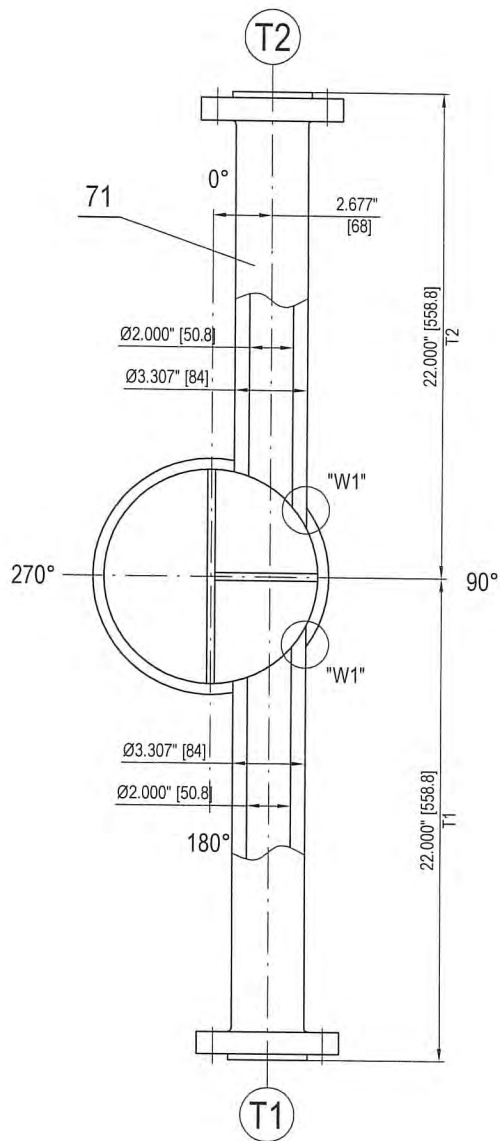
WCE 无锡化工装备股份有限公司  
 WUXI CHEMICAL EQUIPMENT CO., LTD.

设计: 张忠  
 审核: 袁成倩  
 批准: 袁成倩

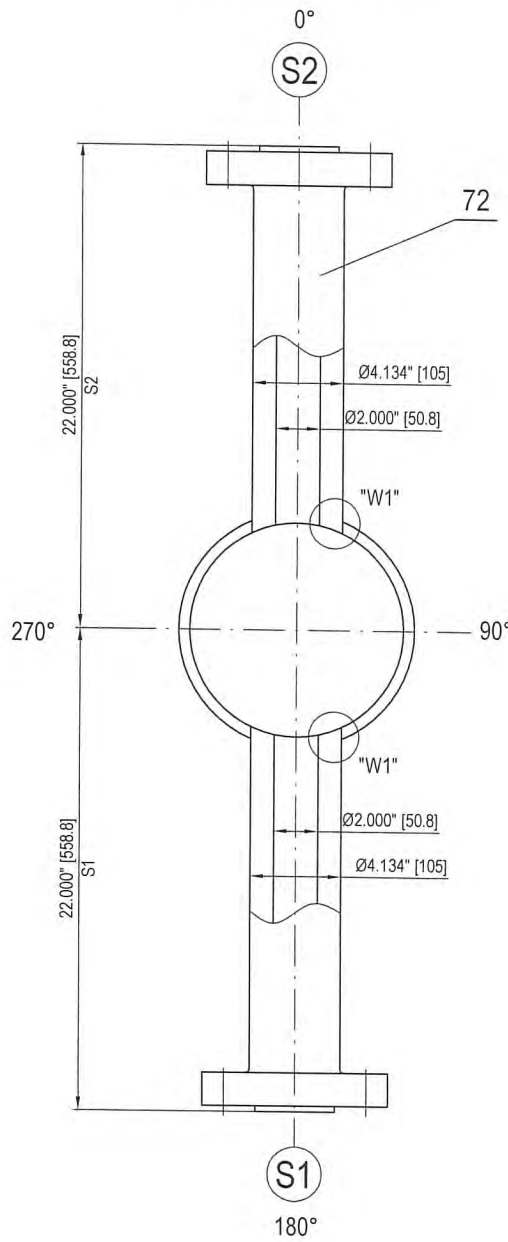
设备号: 18-X-255  
 图号: WCEB80-01  
 DWG NO.

SCALE: 1:5  
 第 1 页 共 1 页  
 PAGE 1 OF 1

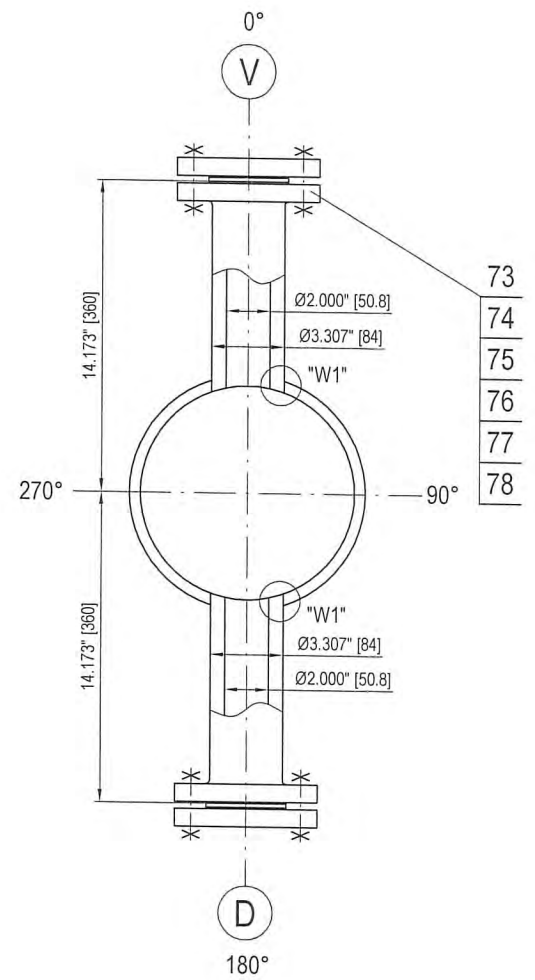
接管T1,T2详图  
DETAIL OF NOZZLE T1,T2



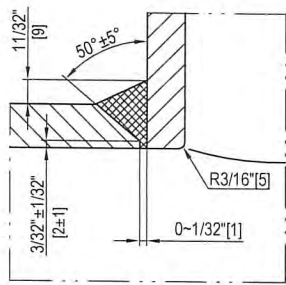
接管S1,S2详图  
DETAIL OF NOZZLE S1,S2



接管V,D详图  
DETAIL OF NOZZLE V,D



"W1"焊缝详图  
DETAIL OF "W1" WELD



注/NOTE1. 4.5mm厚316L缠绕垫, 填充带为柔性石墨, 内环为SS316L, 外环为SS316L; 垫片供应商应为Flexitallic styles LSI, CGI 或 Lamons styles WRI, WRI-LC.  
4.5 mm thk. 316L Spiral Wound, Graphite Filled, SS316L inner and SS316L outer ring; The gasket manufactures shall be Flexitallic styles LSI, CGI or Lamons styles WRI, WRI-LC.

							TOTAL WEIGHT : 124.8 kg		
78	ASME PCC-1-2019 APPENDIX M	硬质垫圈 5/8" HARDENED WASHER	32+4	TYPE 4	/	/	/	/	V,D
77	ASME B18.2.2-2022	重型六角螺母 5/8"-11UNC-2B HEAVY HEX NUTS	64+8	SA-193 Gr.B7M	0.1	6.4	/	/	V,D
76	ASME B18.2.1-2012(2021)	全螺纹螺栓 5/8"-11UNC-2A L=140 FULL THREADED STUD BOLTS	16+2	SA-194 Gr.2HM	0.2	3.2	/	/	V,D
75	ASME B16.20-2017	缠绕垫 2"-300# RF SPIRAL WOUND GASKET	2+4	见注 1/SEE NOTE1	/	/	/	/	V,D
74	ASME B16.5-2017	法兰盖 BL 2"-300# RF BLIND FLANGE	2	SA-182 F316L	3.2	6.4	/	/	V,D
73	ASME B16.5-2017	法兰 LWN 2"-300# RF FLANGE	2	SA-182 F316L	9.4	18.8	/	/	V,D
72	ASME B16.5-2017	法兰 LWN 2"-1500# RF FLANGE	2	SA-182 F316L	30.5	61.0	/	/	S1,S2
71	ASME B16.5-2017	法兰 LWN 2"-600# RF FLANGE	2	SA-105N	14.5	29.0	/	/	T1,T2
件号 PART NO.	图号或标准号 DWG. NO. OR STD. NO.	名称 DESIGNATION	数量 QTY.	材料 MATERIAL	单件重量(kg) EACH WEIGHT	总重量(kg) TOTAL WEIGHT			备注 REMARKS

Air Products Project Number /		Fluor Project Number A8KM			
Project Name World Energy Renewables Project		RFQ No. A8KM-4-410-RQ			
Purchase Order Number 4505688221		PO/Contract No /			
Air Products Open Text document number EN207122-WUXI-9V3-00177		Project Area /			
Client WORLD ENERGY PARAMOUNT		Client Doc No: /			
04	竣工版/ AS BUILT	Zhedong Zhang	Chengqian Yuan	Hu Yang	29-May-23
03	供批准/ ISSUED FOR APPROVAL	Zhedong Zhang	Chengqian Yuan	Hu Yang	20-Feb-23
02	供批准/ ISSUED FOR APPROVAL	Zhedong Zhang	Chengqian Yuan	Hu Yang	12-Dec-22
01	供批准/ ISSUED FOR APPROVAL	Zhedong Zhang	Chengqian Yuan	Hu Yang	22-Sep-22
00	供批准/ ISSUED FOR APPROVAL	Zhedong Zhang	Chengqian Yuan	Hu Yang	29-Jun-22
版次 REV	版次说明/DESCRIPTION	设计/PREPARED	审核/REVIEWED	批准/APPROVED	日期/DATE

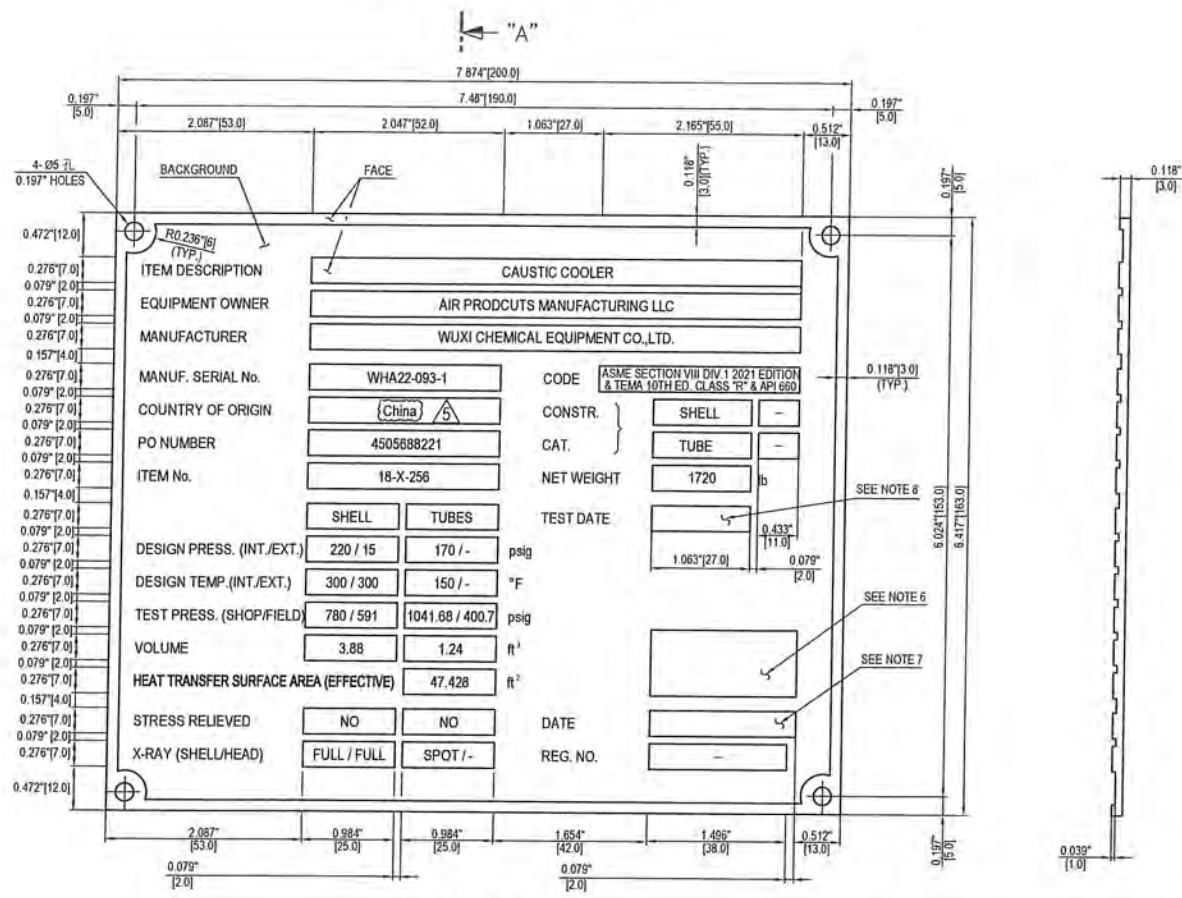
本图纸版权为无锡化工装备股份有限公司财产, 未经本公司许可不得转让或复制给第三方。  
The copyright of this drawing is the property of China Wuxi Chemical Equipment Co., Ltd.(WCE), unauthorized disclosure or duplication to the third party is not permitted.

<b>WCE</b> 无锡化工装备股份有限公司 WUXI CHEMICAL EQUIPMENT CO., LTD.		设计项目 DESIGN ITEM	World Energy Renewables Project
		设计阶段 DESIGN PHASE	详细设计 Detail Design
设计 PREPARED	张政栋 2023.5.29	设备位号 ITEM NO.	18-X-256
审核 REVIEWED	李静 2023.5.29	图号 DWG. NO.	WXCE6830-03
批准 APPROVED	2023.5.29	比例: SCALE	1:6

第 1 页 共 1 页  
PAGE 1 OF 1



标准铭牌详图  
DETAIL OF STANDARD NAME PLATE

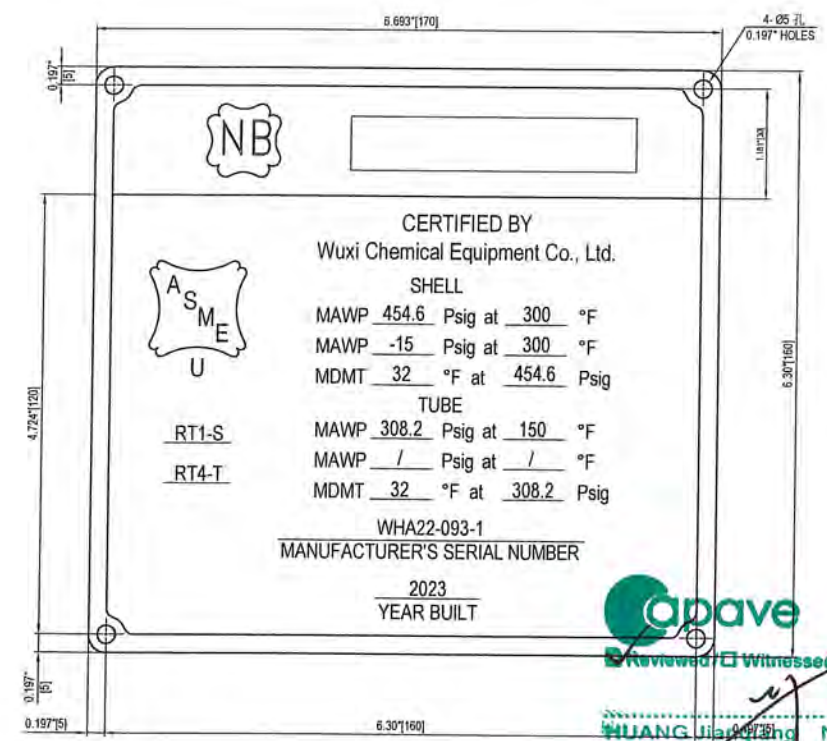


- 注:
- 除注明外, 所有尺寸均以英制为准, 括号外为英制尺寸, 括号内为米制尺寸。
  - 完成后: 铭牌表面抛光处理包括采用铸印字, 背影凸起, 并涂上黑色油漆。
  - 日期: 抛光表面要插入的日期 (英文)。标志可用蚀刻或模压方法标在铭牌上, 标志字符高度不小于0.157"[4mm], 字符深度不少于0.004"[0.1mm]。
  - 铭牌位置见设备装配图。
  - 水压试验后由AI和质量控制检验员一起进行钢印。

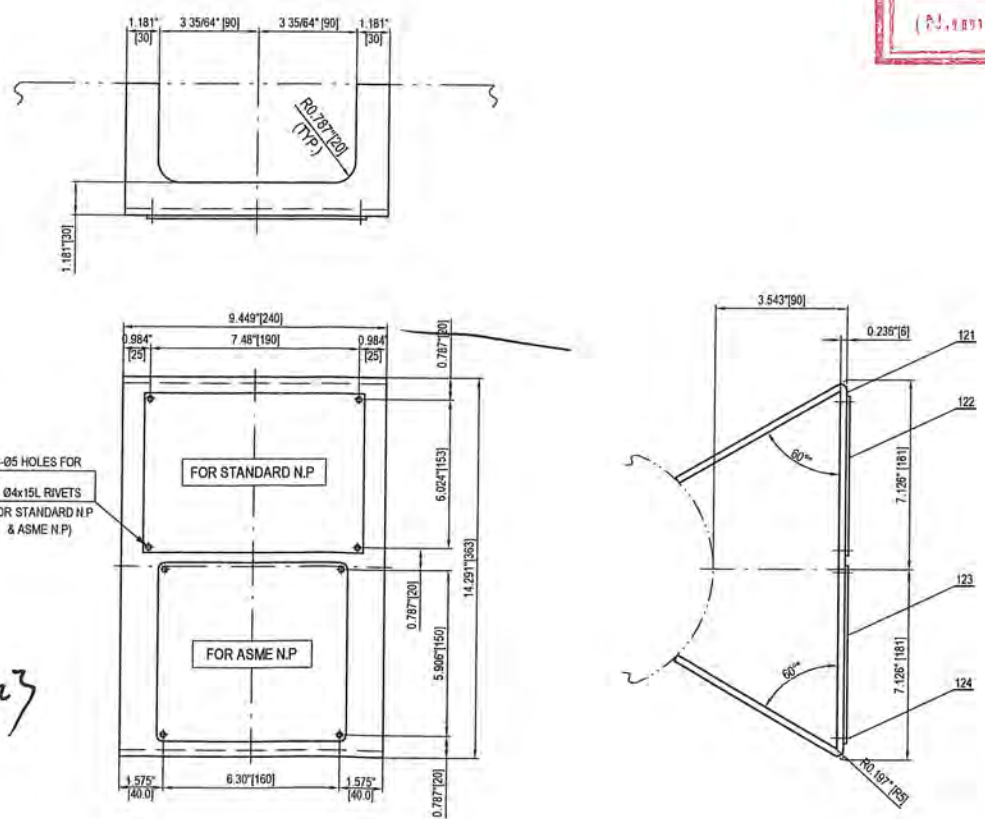
- \*1: NB \*2:
- 批准钢印空间。
  - 批准日期。(示例: 2019年3月1日)
  - 试验日期指压力试验日期。
  - REG. NO.: 注册号。

- NOTES
- ALL DIMENSIONS SHALL BE IN US CUSTOMARY UNIT AS PRIMARY UNIT AND METRIC UNIT SHOWN IN BRACKET, UNLESS OTHERWISE SPECIFIED.
  - FINISH: "FACE" MACHINED AND POLISHED INCLUDING CAST LETTERING. BACKGROUND KNURLED AND PAINTED BLACK.
  - DATE: DATE ON POLISHED SURFACE IS TO BE INSERTED (IN THE ENGLISH LANGUAGE) BY MEANS OF ENGRAVING OR HARD STAMPING AND MUST BE CLEARLY LEGIBLE. THE HEIGHT OF THE LETTERING SHOULD BE APPROX. 0.157"[4mm]. THE DEPTH OF THE LETTERING SHOULD BE APPROX. 0.004"[0.1mm].
  - FOR NAME PLATE LOCATION, SEE ASSY DWG. OF EQUIPMENT
  - STAMPING SHALL BE MADE BY Q.C INSPECTOR AFTER HYDROSTATIC TEST WITH CONCURRENCE OF AJ
- \*1: NB \*2:
- SPACE FOR AUTHORITY APPROVAL STAMP.
  - DATE OF AUTHORITY APPROVAL. (EXAMPLE: 01 MAR 2019)
  - TEST DATE MEANS DATE OF PRESSURE TEST.
  - REG. NO.: REGISTRATION NUMBER.
  - 10 LETTERS AND FIGURES ON ASME NAME PLATES SHALL NOT BE LESS THAN 0.157" (4 MM) HIGH.

ASME铭牌详图  
DETAIL OF ASME NAME PLATE



SECTION "A"- "A"



Engineer in Responsible Charge

Signature: Date: 2023.5.29

(Name in Chinese)

APAVE  
Reviewed & Witnessed  
HUANG Jiaoping N814080 AI  
APAVE SA  
July 10, 2023

件号 PART NO	图号或标准号 DWG OR STD NO	名称 DESCRIPTION	数量 QTY	材料 MATERIAL	单件重量 WT (kg)	备注 REMARK
124		螺钉 Ø4X14 RIVET	8	SS304	/	
123		ASME铭牌 1-3 ASME NAMEPLATE	1	SS304	0.4	
122		标准铭牌 1-3 STANDARD NAMEPLATE	1	SS304	0.7	
121		支架 1-6 BRACKET	1	SA-240 316L	3.9	

版次	REV	版次说明/DESCRIPTION	设计/DESIGNED	审核/REVIEWED	批准/APPROVED	日期/DATE
05		竣工图/AS BUILT	Zhedong Zhang	Chengqian Yuan	Hu Yang	29-May-23
04		供批准/ISSUED FOR APPROVAL	Zhedong Zhang	Chengqian Yuan	Hu Yang	17-Apr-23
03		供批准/ISSUED FOR APPROVAL	Zhedong Zhang	Chengqian Yuan	Hu Yang	20-Feb-23
02		供批准/ISSUED FOR APPROVAL	Zhedong Zhang	Chengqian Yuan	Hu Yang	12-Dec-22
01		供批准/ISSUED FOR APPROVAL	Zhedong Zhang	Chengqian Yuan	Hu Yang	22-Sep-22
00		供批准/ISSUED FOR APPROVAL	Zhedong Zhang	Chengqian Yuan	Hu Yang	29-Jun-22

设计 PREPARED	审核 REVIEWED	批准 APPROVED	设计项目 DESIGN ITEM	设计阶段 DESIGN PHASE	设备位号 ITEM NO.	图号 DWG. NO.
张哲东	陈倩媛	胡阳	Caustic Cooler	详细设计 Detail Design	18-X-256	WXCE830-05

比例: 1:1  
SCALE

第 1 页 共 1 页  
PAGE 1 OF 1