

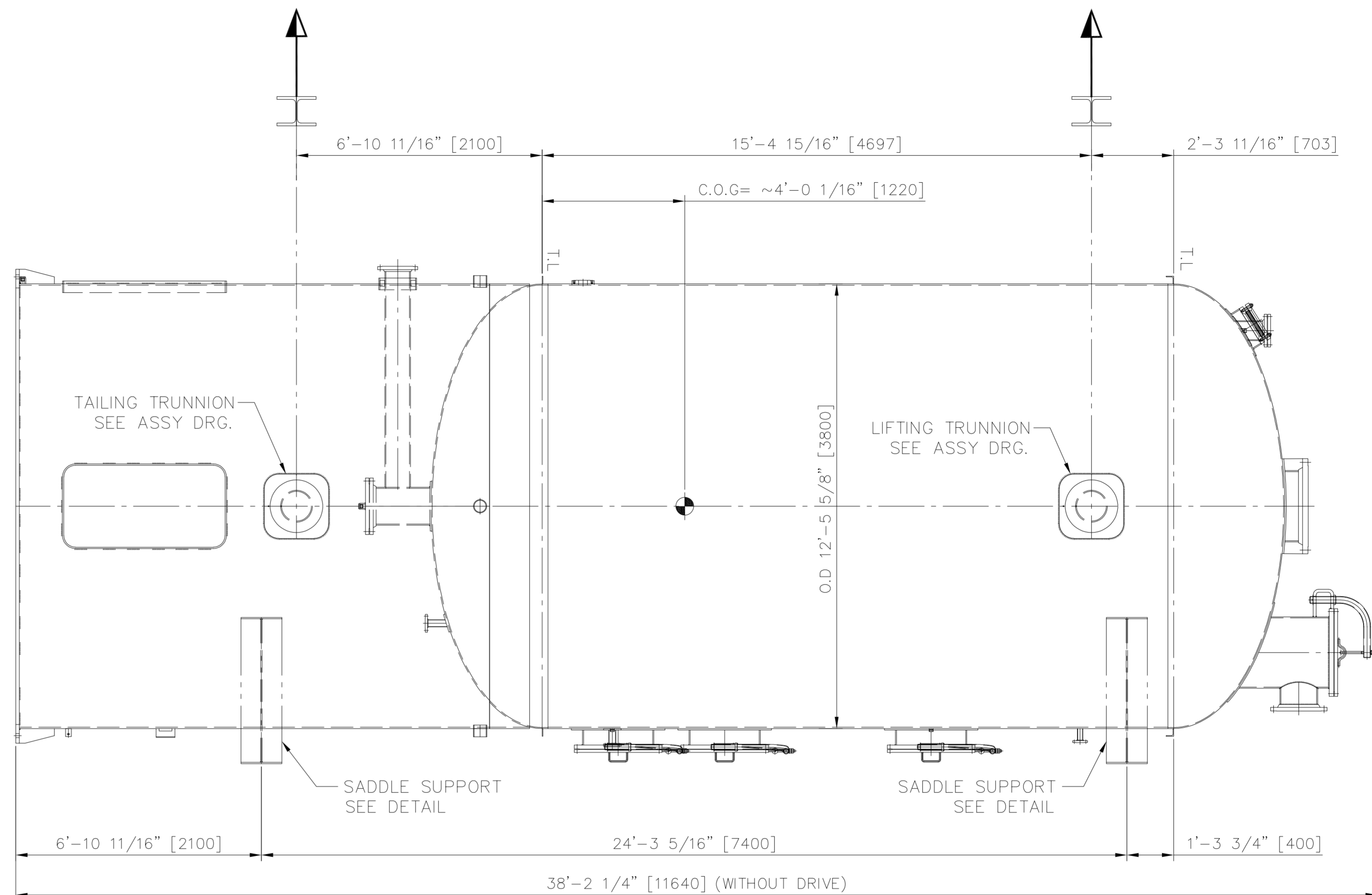
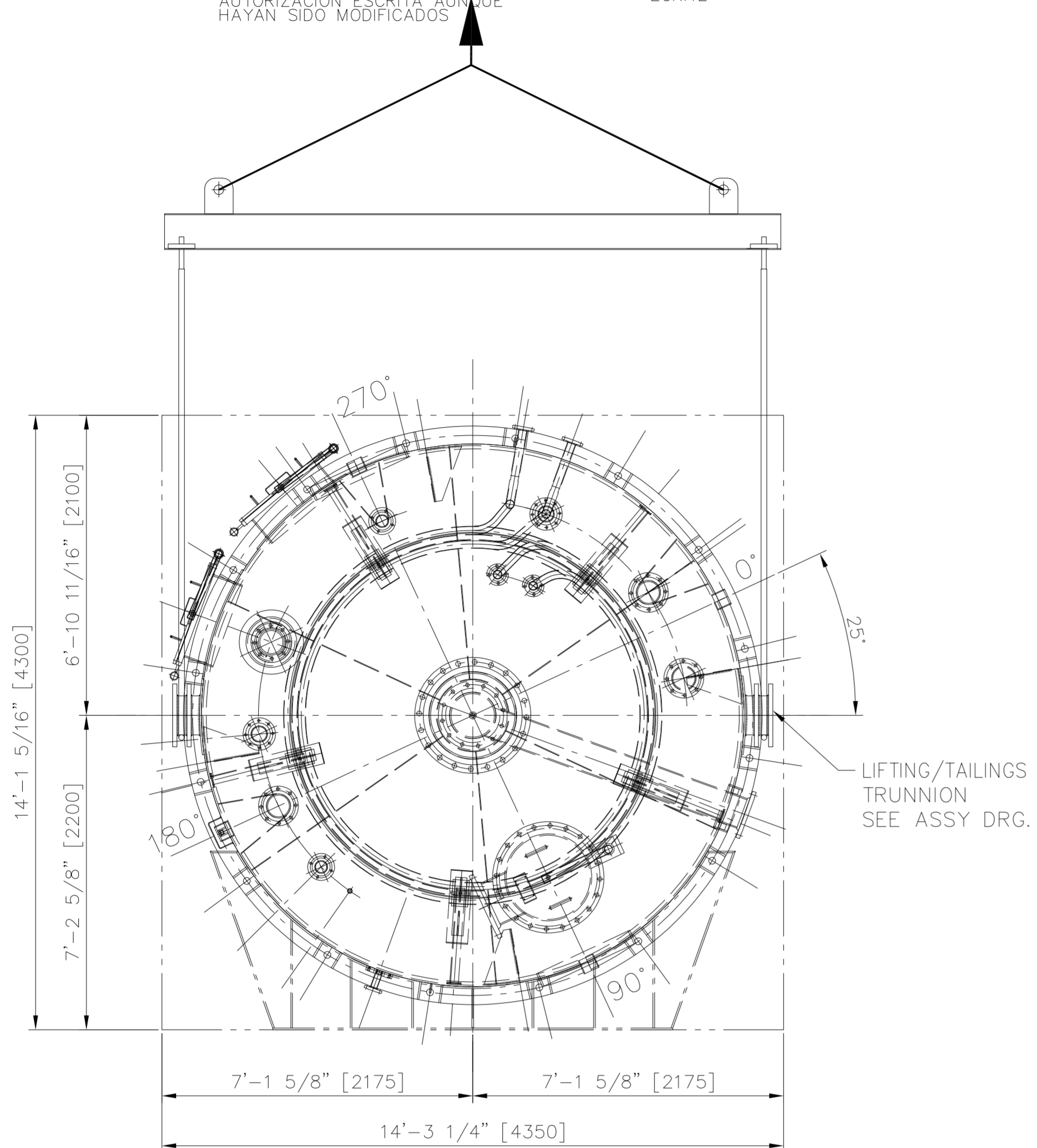
ACCORDING TO THE LAW OUR SURVEYS AND DRAWINGS ARE OUR EXCLUSIVE PROPERTY AND MAY NEITHER BE REPRODUCED NOR COMMUNICATED TO THIRD PARTIES EVEN AFTER MODIFICATIONS WITHOUT OUR WRITTEN CONSENT

DE CONFORMIDAD CON LA LEY NUESTROS ESTUDIOS Y DIBUJOS SON PROPIEDAD EXCLUSIVA DE NUESTRA FIRMA Y NO PUEDEN SER REPRODUCIDOS NI COMUNICADOS A TERCERAS PERSONAS SIN NUESTRA AUTORIZACION ESCRITA, AUNQUE HAYAN SIDO MODIFICADOS

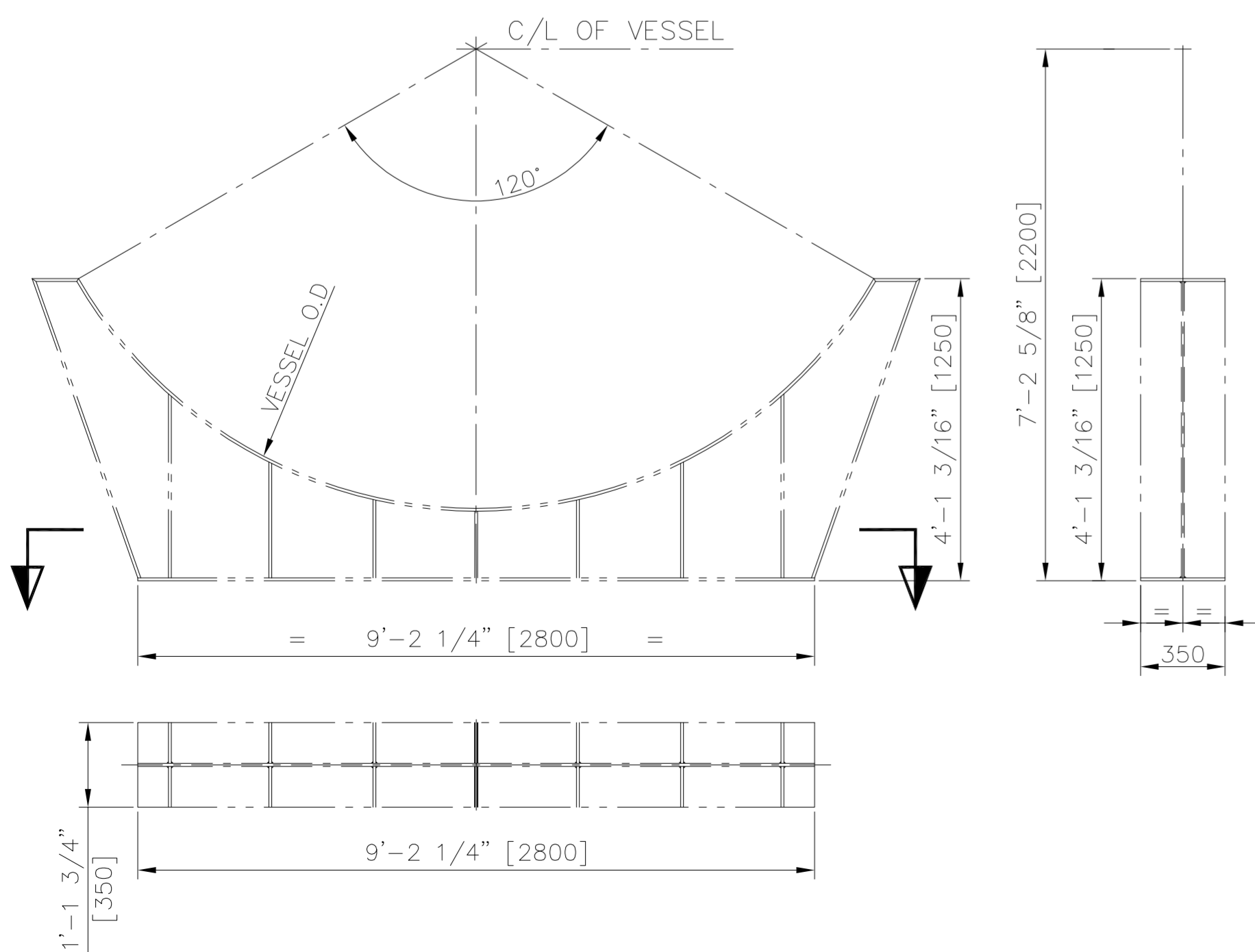
CONFORMEMENT A LA LOI NOS ETUDES ET DESSINS SONT NOTRE PROPRIETE EXCLUSIVE ET NE PEUVENT ETRE REPRODUITS OU COMMUNIQUEES A DES TIERS MEME APRES MODIFICATIONS SANS NOTRE AUTORISATION ECRITE

IF IN DOUBT, ASK - DO NOT SCALE !

DIMENSIONAL DRAWING
NOT VALID FOR ORIENTATION



DETAIL SADDLE SUPPORT
(QTY.: 2 Nos.)



GENERAL NOTES :

- 1) DIMENSIONS ARE IN mm
- 2) TOTAL WEIGHT :
 - NET WEIGHT : ~20540 Kgs (45291 lbs) 001
 - GROSS WEIGHT : NET WEIGHT + SADDLE SUPPORTS
- 3) SHIPPING DIMENSIONS :
 - LENGTH : ~38'-6 5/8" [11750] (WITHOUT DRIVE)
 - WIDTH : ~14'-3 1/4" [4350]
 - HEIGHT : ~14'-1 5/16" [4300]
- 4) THE REFERENCE LINE (CENTER LINE) SHALL BE MARKED WITH WHITE PAINT AT OUTSIDE OF THE VESSEL IN THE ORIENTATIONS OF 0°-90°-180° AND 270°. THE REFERENCE LINE MARKS SHALL BE 3mm THICK x 400mm LONG.
- 5) THE LOCATION OF CENTER OF GRAVITY (C.O.G) AND LIFTING POINTS (WITH LOAD) SHALL BE CLEARLY MARKED WITH WHITE PAINT ON EITHER SIDE OF THE VESSEL.
- 6) THE 'ITEM NUMBER' OF THE VESSEL SHALL BE PROMINENTLY MARKED WITH WHITE PAINT IN LEGIBLE BLOCK LETTERS AT A VISIBLE LOCATION.
- 7) FOR EXACT NOZZLE ORIENTATION AND MORE INFORMATION REFER ASSY.DRAWING

001	05.04.2022	REVISED AS MARKED			HHS
REV	DATE	DESCRIPTION OF MODIFICATION	DOCUMENT TYPE	NBR OF MOD	BY
Desmet Ballestra Group			SHIP		
			PROJECT DESCRIPT	WORPAR	
ITEM NBR DISPOSITION	622.2 (19-D-857)	SECD	PKK	SCALE	FORMAT
DOCUMENT DESCRIPTION	CONTINUOUS BLEACHER	PROJ.E	GVK		A3
		PROJ.M	JCG		
		DOM	PRA	AUTHOR	SHN
		DATE	DRAWING NUMBER	REVISION	
OVERALL DIMENSIONS FOR TRANSPORTATION			27.10.2021	100176103	001