


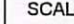

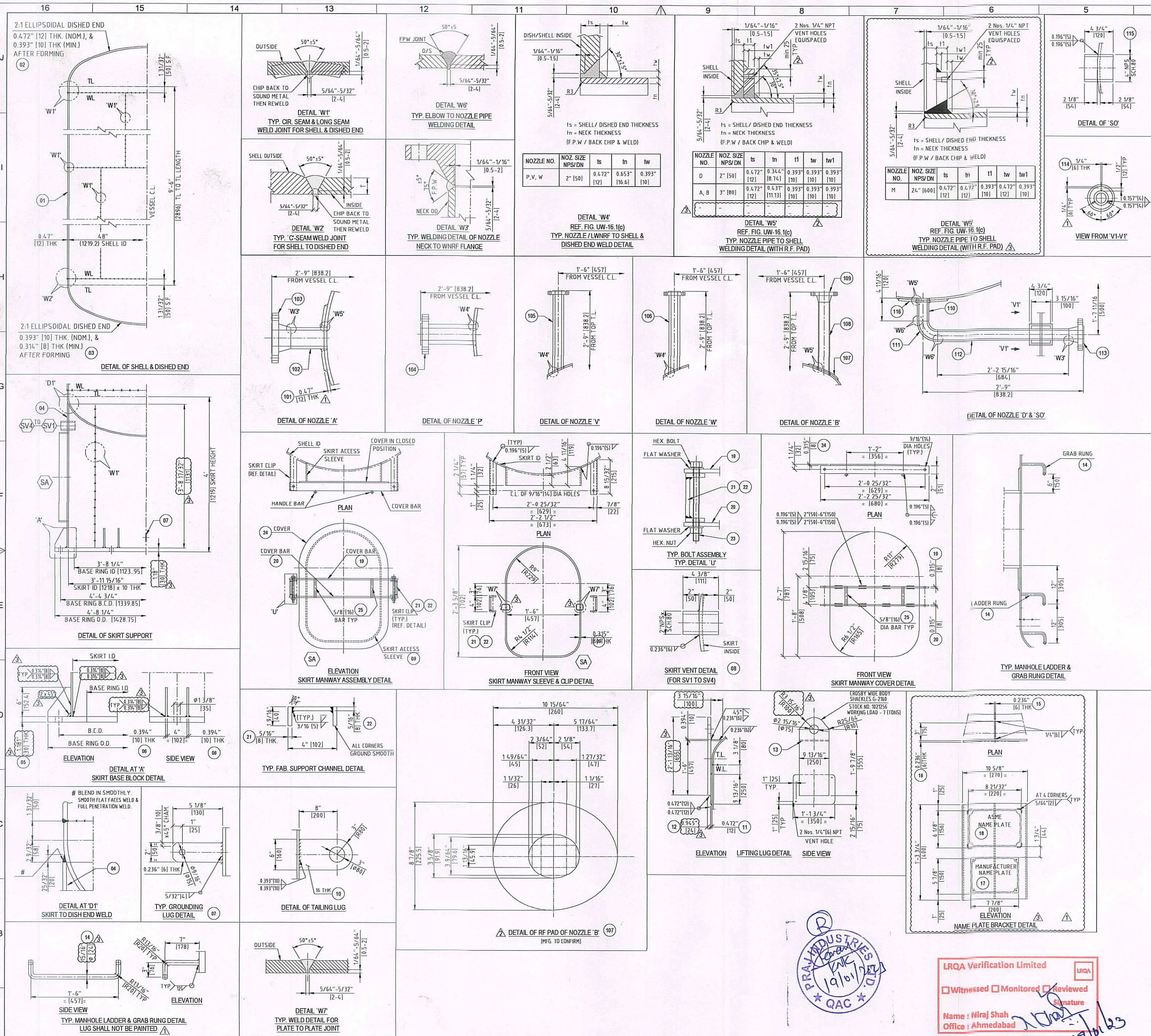
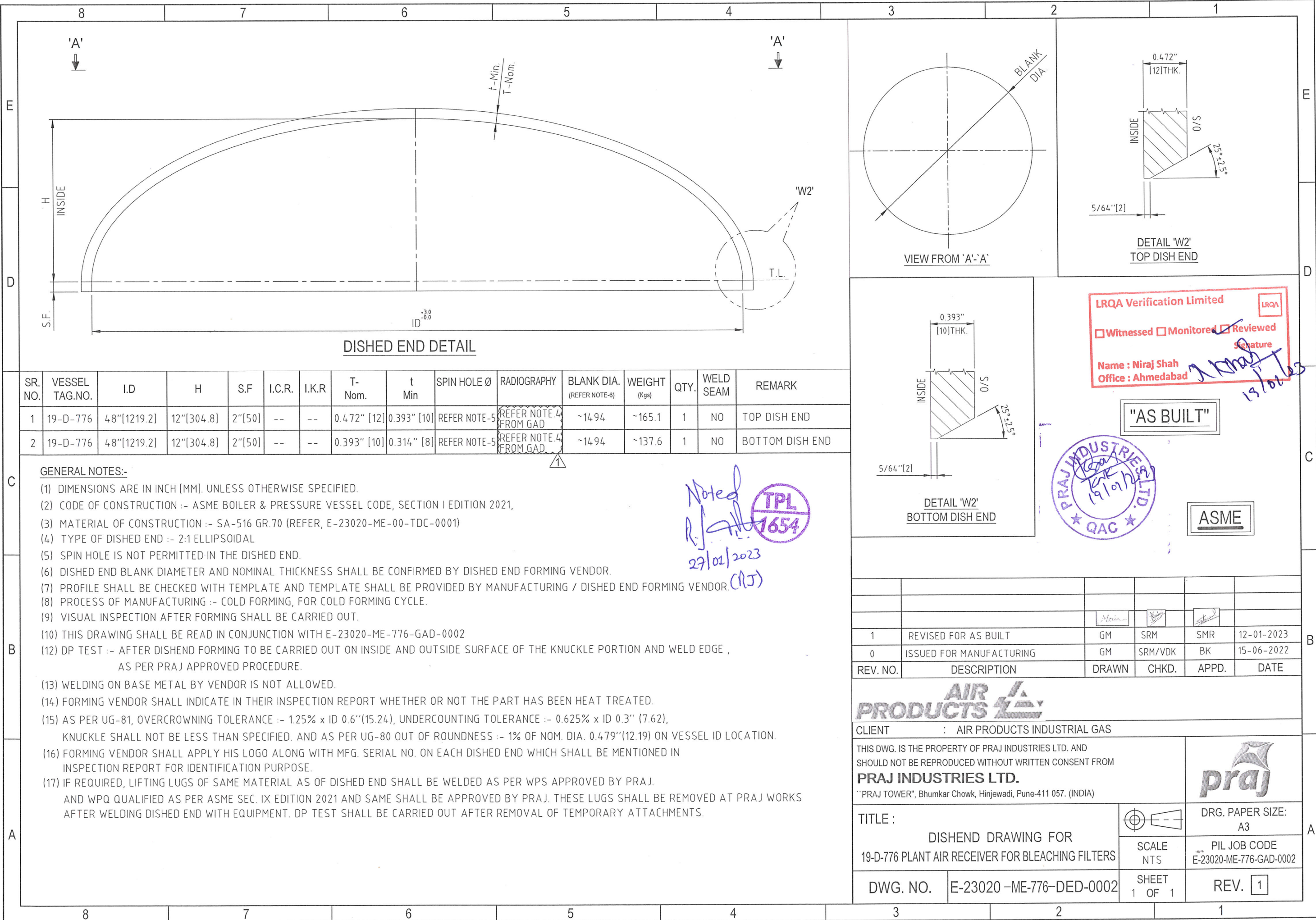


| | | | |
|--|--|---|--|
| CLIENT : WORLD ENERGY PARAMOUNT | | P.O. NO. : 4505704449 | |
| EQUIPMENT OWNER : AIR PRODUCTS MANUFACTURING LLC | | PROJECT DO NO. EN007124-PRAJ-0007 | |
| PROJECT : WORLD ENERGY RENEWABLES PROJECT | | CLIENT REV. NO. | |
| PROJECT LOCATION : WORLD ENERGY, PARAMOUNT, CA, USA | | | |
| THIS DWG. IS THE PROPERTY OF PRAJ INDUSTRIES LTD. AND SHOULD NOT BE REPRODUCED WITHOUT WRITTEN CONSENT FROM PRAJ INDUSTRIES LTD. | | | |
| "PRAJ TOWER", Bhumkar Chowk-Hinjewadi Road, Hinjewadi, Pune-411 057, (INDIA) | | | |
| TITLE : GENERAL ARRANGEMENT DRAWING FOR 19-D-776 PLANT AIR RECEIVER FOR BLEACHING FILTERS | |  DRAWING NO. : A1 | |
| DWG. NO. : E-23020-ME-776-GAD-0002 | |  SCALE : 1:1 NTS : | |
| | |  PIL JOB CODE : E-23020 | |
| | |  SHEET : 1 of 1 | |
| | |  REV : 1 of 1 | |



| | | | |
|--|-------|--|---|
| NOTES :- | | 1) ALL DIMENSIONS ARE IN INCHES (MM), UNLESS OTHERWISE SPECIFIED | |
| | | 2) THIS DRAWING TO BE READ IN CONJUNCTION WITH | |
| | | a) G.A. DRAWING NO. E-23020-ME-776-GAD-0002 | |
| | | 3) GIVEN BILL OF MATERIAL IS FOR 1 NO. EQUIPMENT ONLY & TOTAL EQUIPMENT QTY IS 1 No. | |
| | | 4) FILLET WELD SHALL BE 1/4" (6mm) (MINIMUM) UNLESS OTHERWISE SPECIFIED. | |
| 203 WASHER | | 4 EA | 5266426 WASHER-ASTM F436-TYPE 1-ASME PCS-1-1-V4 |
| 202 M STD NUT WASHER | | 2 SET | 5161141 STD-NUT-WASHER-ASTM F436-TYPE 1-ASME PCS-1-1-V4 |
| 201 M GASKET | | 2 EA | 5299808 GASKET-SPLW-SS316-GRH-14.5-NPS 2-1/2 |
| | | SPARE BILL OF MATERIAL | |
| 116 D RF PAD | 1 EA | 501388 | PLATE-SA 516GR70-110-TDC |
| 115 SO PIPE | 0.2 M | 5197598 | PIPE-SMLS-BE-SANISH-GRH-500N-SCH80-TDC |
| 114 SUPPORT PLATE | 3 EA | 5195989 | PLATE-SA516GR70-110-TDC |
| 113 D FLANGE | 1 EA | 5217124 | FLANGE-WNRF-SANIS-NPS2-H600-SCH80-TDC |
| 112 D PIPE | 0.8 M | 5197603 | PIPE-SMLS-BE-SANISH-GRH-500N-SCH80-TDC |
| 111 D ELBOW | 1 EA | 5165322 | ELBOW-SMLS-BE-LR-90D-423A-WP9-NPS2-S160 |
| 109 B FLANGE | 1 EA | 5197603 | FLANGE-WNRF-SANIS-NPS3-1000-SCH80-TDC |
| 108 B PIPE | 0.7 M | 5200037 | PIPE-SMLS-B3610-BE-AT608-DNR4-S160-TDC |
| 107 B RF PAD | 1 EA | 501388 | PLATE-SA 516GR70-110-TDC |
| 106 V FLANGE | 1 EA | 5217126 | FLG-WNRF-SANIS-600N-NPS2-T16.6-68N-TDC |
| 105 V FLANGE | 1 EA | 5217126 | FLG-WNRF-SANIS-600N-NPS2-T16.6-68N-TDC |
| 104 P FLANGE | 1 EA | 5217125 | FLG-WNRF-SANIS-600N-NPS2-T16.6-26N-TDC |
| 103 A FLANGE | 1 EA | 5217123 | FLANGE-WNRF-SANIS-NPS3-1000-SCH80-TDC |
| 102 A PIPE | 0.2 M | 5200037 | PIPE-SMLS-B3610-BE-AT608-DNR4-S160-TDC |
| 101 A RF PAD | 1 EA | 5159592 | PLATE-SA 516GR70-112-TDC |
| 27 M MANHOLE | 1 EA | 615201 | MANHOLE-CS-600DN-H150-DAVIT |
| 26 M RF PAD | 1 EA | 501388 | PLATE-SA 516GR70-110-TDC |
| 25 ROUND BAR | 2 EA | 5159594 | PLATE-SA516GR70-110-TDC |
| 24 SKIRT ACCESS COVER | 1 EA | 501387 | PLATE-SA 516GR70-18-TDC |
| 23 BOLT - NUT-WASHER | 2 SET | 5209655 | HEXBOLT-NUT-WASHER-ASTM F436-TYPE 1-ASME PCS-1-1-V4 |
| 22 FAB CHANNEL PLATE | 2 EA | 501387 | PLATE-SA 516GR70-18-TDC |
| 21 FAB CHANNEL PLATE | 4 EA | 501387 | PLATE-SA 516GR70-18-TDC |
| 20 COVER BOT. PLATE | 1 EA | 501387 | PLATE-SA 516GR70-18-TDC |
| 19 COVER TOP PLATE | 1 EA | 501387 | PLATE-SA 516GR70-18-TDC |
| 18 NAME PLATE-AIS304-ASME | 1 EA | 5020959 | NAME-PLATES-AIS304-ASME |
| 17 NAME PLATE-AIS304-MFG | 1 EA | 5005393 | NAME-PLATE-AIS304 |
| 16 NAME PLATE BKT. PLATE | 1 EA | 5159589 | PLATE-SA516GR70-16-TDC |
| 15 NAME PLATE BKT. PLATE | 1 EA | 5159589 | PLATE-SA516GR70-16-TDC |
| 14 LADDER RUNG | 3 EA | 6011999 | PLATE-SA 516GR70-T24-TDC |
| 13 SUPPORT PLATE | 2 EA | 501388 | PLATE-SA 516GR70-110-TDC |
| 12 LIFTING LUG | 2 EA | 5007255 | PLATE-SA516GR70-T24-TDC |
| 11 RF PAD FOR LIFTING LUG | 2 EA | 5159592 | PLATE-SA516GR70-T12-TDC |
| 10 TAILING LUG | 1 EA | 5007251 | PLATE-SA516GR70-T16 |
| 09 SKIRT ACCESS PLATE | 1 EA | 501387 | PLATE-SA 516GR70-18-TDC |
| 08 SV1-SV4 | 0.6 M | 5044659 | PIPE-SMLS-BE-SANISH-GRH-450N-SCH80 |
| 07 GROUNDING LUG | 4 EA | 5034291 | PLATE-AIS304-T6 |
| 06 GUSSET PLATE | 16 EA | 5007231 | PLATE-SA516GR70-110 |
| 05 BASE PLATE | 1 EA | 5007239 | PLATE-SA516GR70-T30 |
| 04 SKIRT PLATE | 1 EA | 501388 | PLATE-SA 516GR70-110 |
| 03 DISHED END BOTTOM | 1 EA | 662218 | DISH-21ELLIPTICAL-SA 516 Gr-70-T10 |
| 02 DISHED END TOP | 1 EA | 674140 | DISH-21ELLIPTICAL-SA 516 Gr-70-T12 |
| 01 MAIN SHELL | 1 EA | 5159592 | PLATE-SA516GR70-T12-TDC |
| SRNO DESCRIPTION QTY UOM MAT.CODE | | MATERIAL | |
| SALES ORDER No. | | ITEM No. | |
| 30002756 | | 28 | |
| | | 9006935 | |
| REVISIONS | | REV. NO. DESCRIPTION | |
| | | ZONE NO. DRAWN CHKD. APPD. TLE | |
| 3 | | REVISED FOR AS BUILT | |
| 2 | | REVISED AS MARKED | |
| 1 | | REVISED AS MARKED | |
| 0 | | ISSUED FOR APPROVAL | |
| MANUFACTURING ADDRESS :- | | P.O. NO. : 4505704449 | |
| PRAJ INDUSTRIES LTD. SEZ UNIT-I, | | PROJECT NO. : EN007124-PRAJ-00008 | |
| PLOT NO.307 TO 314, SECTOR IV, KANDLA SPECIAL ECONOMIC ZONE, | | CLIENT REV. NO. | |
| GANDHIDHAM, KUTCH, GUJARAT, 370230, INDIA | | ASME | |
| MANUFACTURER'S SERIAL NUMBER :- E-23020-19-D-776 (QTY - 1 No.) | | THIS DWG. IS THE PROPERTY OF PRAJ INDUSTRIES LTD. AND SHOULD NOT BE REPRODUCED WITHOUT WRITTEN CONSENT FROM PRAJ INDUSTRIES LTD. | |
| "PRAJ TOWER", Bhumkar Chowk-Hinjewadi Road, Hinjewadi, Pune-411 057, (INDIA) | | TITLE : FABRICATION DETAIL DRAWING FOR 19-D-776 PLANT AIR RECEIVER FOR BLEACHING FILTERS | |
| DWG. NO. E-23020-ME-776-WFD-0002 | | SHEET 1 OF 1 | |
| | | SCALE NTS | |
| | | REV. 1/3 | |



| SR. NO. | VESSEL TAG.NO. | I.D | H | S.F | I.C.R. | I.K.R | T- Nom. | t Min | SPIN HOLE Ø | RADIOGRAPHY | BLANK DIA. (REFER NOTE-6) | WEIGHT (Kgs) | QTY. | WELD SEAM | REMARK |
|---------|----------------|-------------|------------|--------|--------|-------|-------------|-------------|--------------|-----------------------|---------------------------|--------------|------|-----------|-----------------|
| 1 | 19-D-776 | 48"[1219.2] | 12"[304.8] | 2"[50] | -- | -- | 0.472" [12] | 0.393" [10] | REFER NOTE-5 | REFER NOTE-4 FROM GAD | ~14.94 | ~165.1 | 1 | NO | TOP DISH END |
| 2 | 19-D-776 | 48"[1219.2] | 12"[304.8] | 2"[50] | -- | -- | 0.393" [10] | 0.314" [8] | REFER NOTE-5 | REFER NOTE-4 FROM GAD | ~14.94 | ~137.6 | 1 | NO | BOTTOM DISH END |

- GENERAL NOTES:-**
- (1) DIMENSIONS ARE IN INCH [MM]. UNLESS OTHERWISE SPECIFIED.
 - (2) CODE OF CONSTRUCTION :- ASME BOILER & PRESSURE VESSEL CODE, SECTION I EDITION 2021,
 - (3) MATERIAL OF CONSTRUCTION :- SA-516 GR.70 (REFER, E-23020-ME-00-TDC-0001)
 - (4) TYPE OF DISHED END :- 2:1 ELLIPSOIDAL
 - (5) SPIN HOLE IS NOT PERMITTED IN THE DISHED END.
 - (6) DISHED END BLANK DIAMETER AND NOMINAL THICKNESS SHALL BE CONFIRMED BY DISHED END FORMING VENDOR.
 - (7) PROFILE SHALL BE CHECKED WITH TEMPLATE AND TEMPLATE SHALL BE PROVIDED BY MANUFACTURING / DISHED END FORMING VENDOR.
 - (8) PROCESS OF MANUFACTURING :- COLD FORMING, FOR COLD FORMING CYCLE.
 - (9) VISUAL INSPECTION AFTER FORMING SHALL BE CARRIED OUT.
 - (10) THIS DRAWING SHALL BE READ IN CONJUNCTION WITH E-23020-ME-776-GAD-0002
 - (12) DP TEST :- AFTER DISHEND FORMING TO BE CARRIED OUT ON INSIDE AND OUTSIDE SURFACE OF THE KNUCKLE PORTION AND WELD EDGE , AS PER PRAJ APPROVED PROCEDURE.
 - (13) WELDING ON BASE METAL BY VENDOR IS NOT ALLOWED.
 - (14) FORMING VENDOR SHALL INDICATE IN THEIR INSPECTION REPORT WHETHER OR NOT THE PART HAS BEEN HEAT TREATED.
 - (15) AS PER UG-81, OVERCROWNING TOLERANCE :- 1.25% x ID 0.6"(15.24), UNDERCOUNTING TOLERANCE :- 0.625% x ID 0.3" (7.62), KNUCKLE SHALL NOT BE LESS THAN SPECIFIED. AND AS PER UG-80 OUT OF ROUNDNESS :- 1% OF NOM. DIA. 0.479"(12.19) ON VESSEL ID LOCATION.
 - (16) FORMING VENDOR SHALL APPLY HIS LOGO ALONG WITH MFG. SERIAL NO. ON EACH DISHED END WHICH SHALL BE MENTIONED IN INSPECTION REPORT FOR IDENTIFICATION PURPOSE.
 - (17) IF REQUIRED, LIFTING LUGS OF SAME MATERIAL AS OF DISHED END SHALL BE WELDED AS PER WPS APPROVED BY PRAJ. AND WPQ QUALIFIED AS PER ASME SEC. IX EDITION 2021 AND SAME SHALL BE APPROVED BY PRAJ. THESE LUGS SHALL BE REMOVED AT PRAJ WORKS AFTER WELDING DISHED END WITH EQUIPMENT. DP TEST SHALL BE CARRIED OUT AFTER REMOVAL OF TEMPORARY ATTACHMENTS.

LRQA Verification Limited

☐ Witnessed ☐ Monitored ☒ Reviewed

Signature

Name : Niraj Shah

Office : Ahmedabad

"AS BUILT"

ASME

DETAIL 'W2' TOP DISH END

DETAIL 'W2' BOTTOM DISH END

| | | | | | |
|----------|--------------------------|-------|---------|-------|------------|
| 1 | REVISED FOR AS BUILT | GM | SRM | SMR | 12-01-2023 |
| 0 | ISSUED FOR MANUFACTURING | GM | SRM/VDK | BK | 15-06-2022 |
| REV. NO. | DESCRIPTION | DRAWN | CHKD. | APPD. | DATE |

AIR PRODUCTS

CLIENT : AIR PRODUCTS INDUSTRIAL GAS

THIS DWG. IS THE PROPERTY OF PRAJ INDUSTRIES LTD. AND SHOULD NOT BE REPRODUCED WITHOUT WRITTEN CONSENT FROM PRAJ INDUSTRIES LTD.

"PRAJ TOWER", Bhumkar Chowk, Hinjewadi, Pune-411 057. (INDIA)

TITLE : DISHEND DRAWING FOR 19-D-776 PLANT AIR RECEIVER FOR BLEACHING FILTERS

SCALE NTS

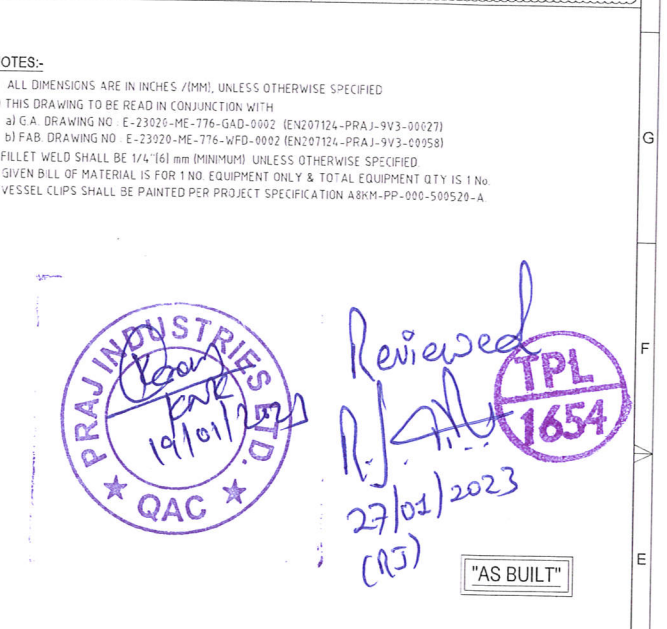
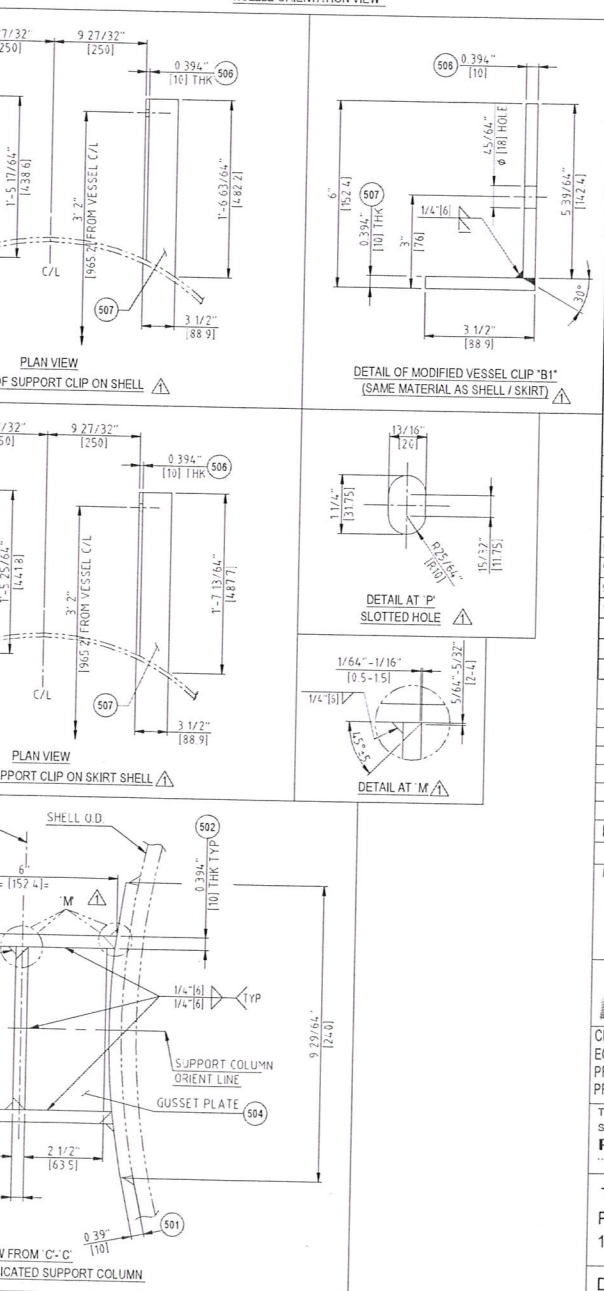
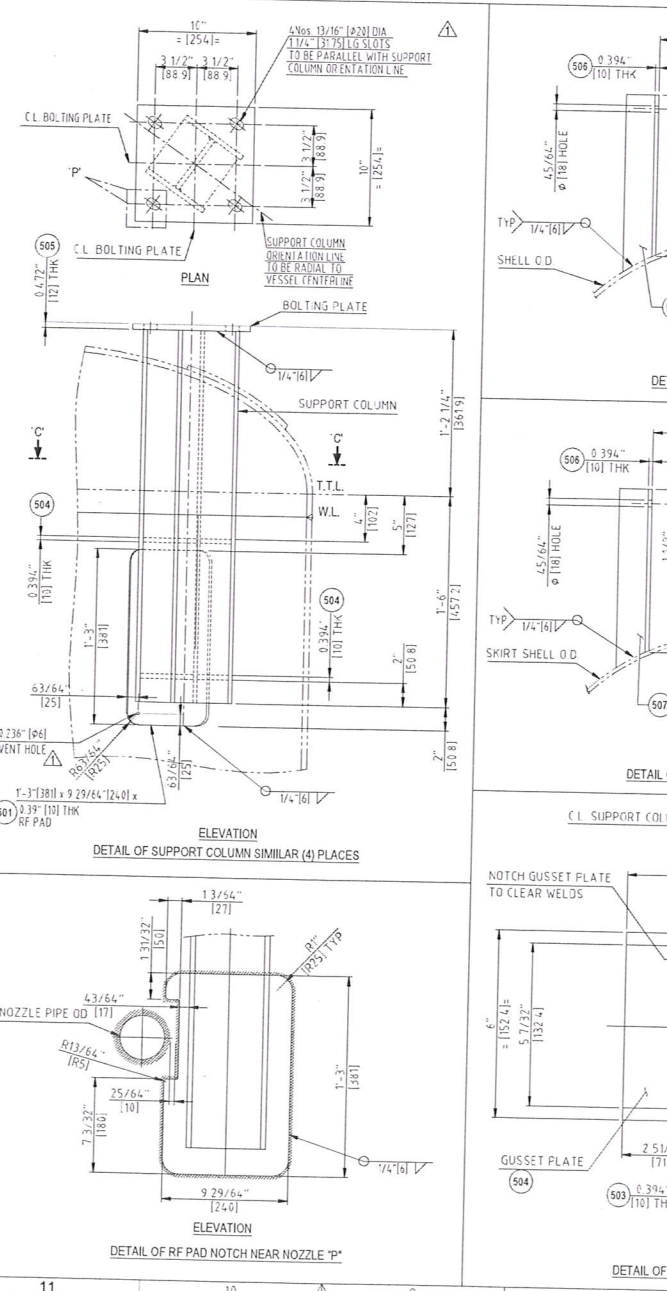
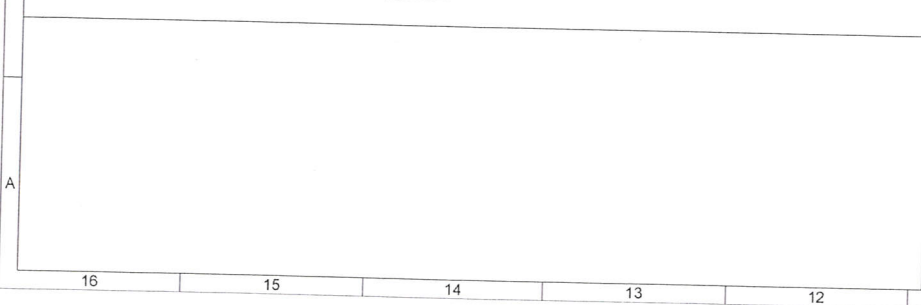
DWG. NO. E-23020-ME-776-DED-0002


DRG. PAPER SIZE: A3




PIL JOB CODE E-23020-ME-776-GAD-0002

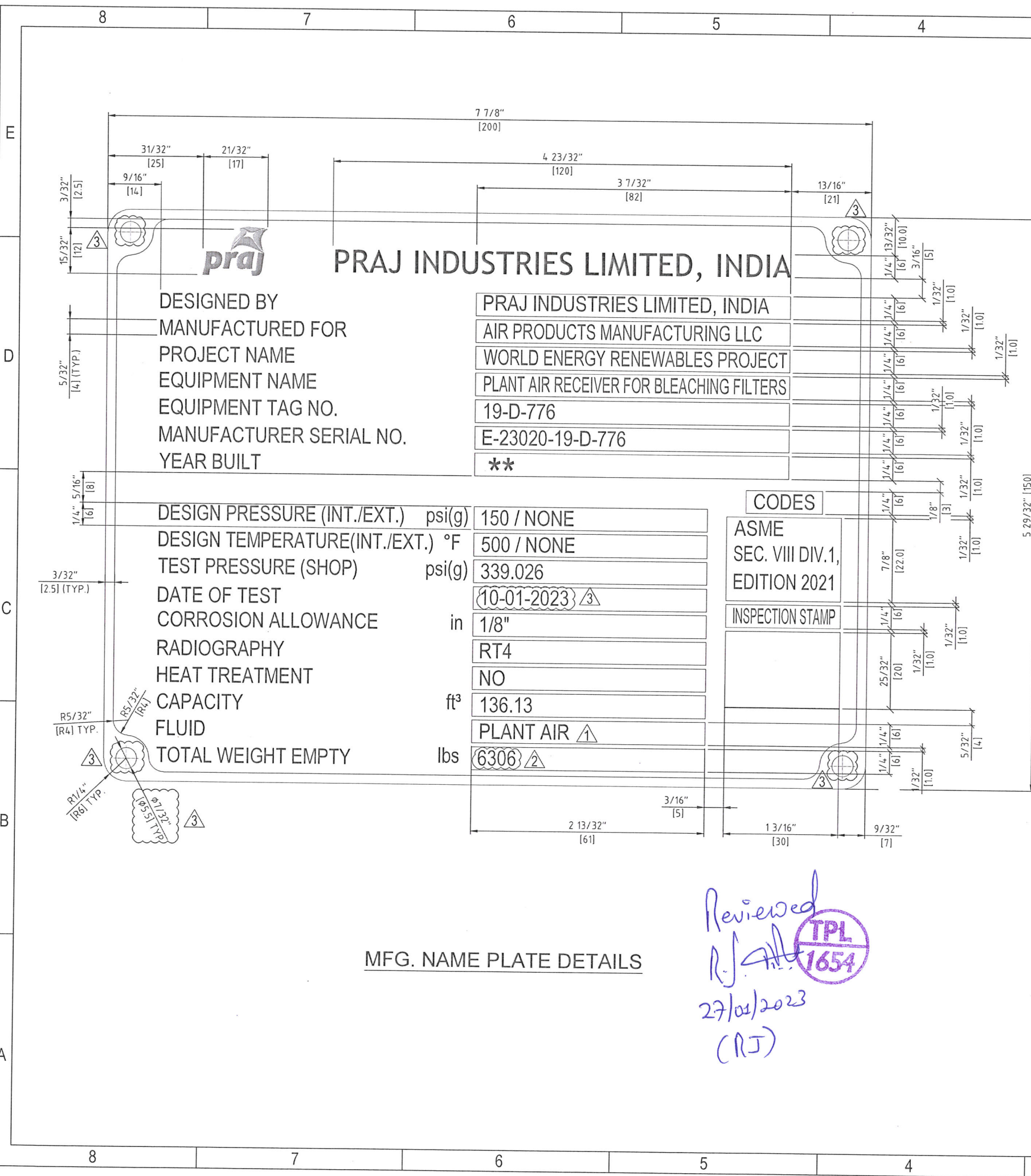
SHEET 1 OF 1

REV. 1

[illegible]

| | | |
|---|--|--|
|  | | B |
| : WORLD ENERGY PARAMOUNT : AIR PRODUCTS MANUFACTURING LLC : WORLD ENERGY RENEWABLES PROJECT : WORLD ENERGY, PARAMOUNT, CA, USA | | |
| | | P.O. NO. : 4505704449 PROJECT DOC. NO. EN207124-PAJ-9V3-00073 |

| | | |
|--|--|---|
| NG. IS THE PROPERTY OF PRAJ INDUSTRIES LTD. AND IT NOT BE REPRODUCED WITHOUT WRITTEN CONSENT FROM PRAJ INDUSTRIES LTD. "COVER", Bhumkar Chowk-Hinjewadi Road, Hinjewadi, Pune-411 057. (INDIA) | | CLIENT REF. NO.  |
| TITLE : DRAWING CLEAR MOUNTING ARRANGEMENT DRAWING FOR 776 PLANT AIR RECEIVER FOR BLEACHING FILTERS |  SCALE NTS SHEET | DRAWING SIZE : A1 PIL JOB CODE E-23020 REV.  |
| Dwg. NO. : E-23020-ME-776-PCA-0002 | | |



NOTES :-

- 1) ALL DIMENSIONS ARE IN INCH/(MM) UNLESS OTHERWISE SPECIFIED.
- 2) TEXT ON THE NAME PLATE SHALL BE INDENTED BY ETCHING. AND LETTER SHALL BE BLACK COLOUR MIN. CHARACTER SIZE SHALL BE 0.1575" [4 mm] & DEPTH OF INDENTATION SHALL BE MIN. 0.01" [0.25mm]. (e.g.- Pressure)
- 3) MATERIAL OF CONSTRUCTION OF NAME PLATE - AISI304
- 4) REFER G.A. DRAWING NUMBER : E-23020-ME-776-GAD-0002
- 5) NAME PLATE THICKNESS 0.0788" [2mm].
- 6) TOTAL QTY.- 01 No.
- 7) ** YEAR OF BUILT SHALL CORRESPOND TO THE DATE OF APPLYING "CODE STAMP" AND SHALL BE HARD PUNCHED PHYSICALLY.
- 8) LETTERS SHALL BE AS FOLLOWS :-
PRAJ INDUSTRIES LTD. : TREBUCHET MS.
OTHERS : ARIAL NARROW (EXCEPT "LOGO", WHICH WILL BE AS PER PRAJ NORMS)
- 9) NAME PLATE SHALL BE RIVETED TO BRACKET.
- 10) ACTUAL DATE SHALL BE PUNCHED (ENGRAVING OR HARD STAMPING) AFTER HYDRO TESTING IN DD-MM-YYYY FORMAT & MUST BE CLEARLY LEGIBLE.
- 11) INSPECTION STAMP SHALL BE HARD PUNCH AFTER OBTAINING APPROVAL FROM AI.

AS BUILT

ASME

| REV. NO. | DESCRIPTION | DRAWN | CHKD. | APPD. | DATE |
|----------|----------------------|-------|-------|-------|------------|
| 3 | REVISED FOR AS BUILT | GM | SRM | SMR | 12-01-2023 |
| 2 | REVISED AS MARKED | GM | SRM | SMR | 21-10-2022 |
| 1 | ISSUE FOR APPROVAL | GM | SRM | SMR | 15-09-2022 |
| 0 | ISSUED FOR APPROVAL | GM | SRM | SMR | 04-08-2022 |

AIR PRODUCTS

CLIENT : WORLD ENERGY PARAMOUNT
EQUIPMENT OWNER: AIR PRODUCTS MANUFACTURING LLC
PROJECT : WORLD ENERGY RENEWABLES PROJECT
PROJECT LOCATION: WORLD ENERGY, PARAMOUNT, CA, USA

P.O. NO. : 4505704449
CLIENT DOC. NO. : EN207124-PRAJ-9V3-00028
CLIENT REV. NO.

THIS DWG. IS THE PROPERTY OF PRAJ INDUSTRIES LTD. AND SHOULD NOT BE REPRODUCED WITHOUT WRITTEN CONSENT FROM
PRAJ INDUSTRIES LTD.
"PRAJ TOWER", Bhumkar Chowk, Hinjewadi, Pune-411 057. (INDIA)

TITLE : NAME PLATE DETAIL DRAWING FOR
19-D-776 PLANT AIR RECEIVER FOR BLEACHING FILTERS

SCALE
NTS

DRG. PAPER SIZE:
A3
PIL JOB CODE
E-23020

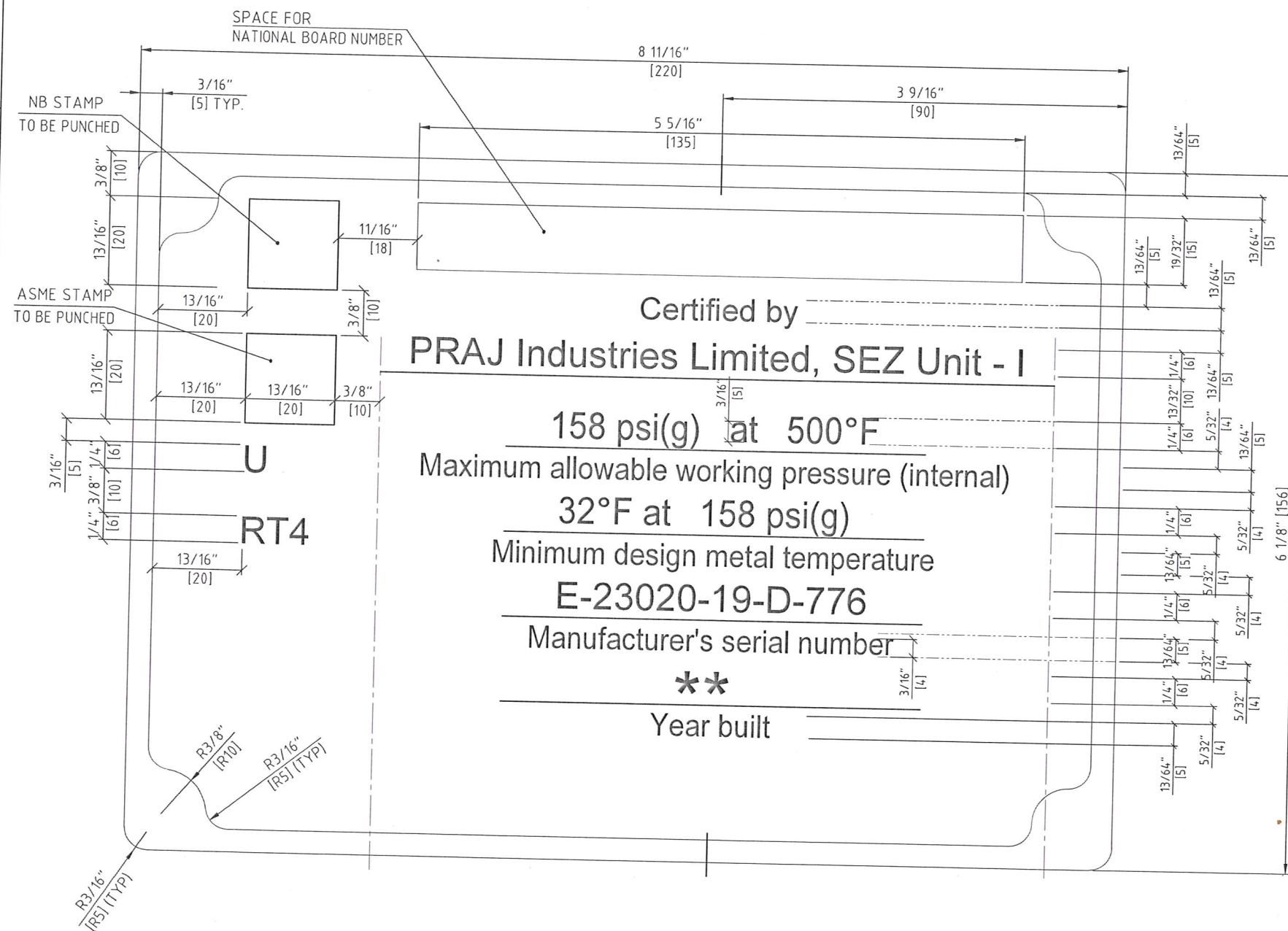
DWG. NO. E-23020-ME-776-NPD-0002

SHEET
1 OF 2

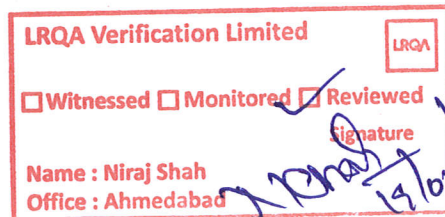
REV. 3

E
D
C
B
A

8 7 6 5 4 3 2 1



ASME NAME PLATE DETAIL



- NOTES:-
- 1) ALL DIMENSIONS ARE IN INCH/(MM) UNLESS OTHERWISE SPECIFIED.
 - 2) TEXT ON THE NAME PLATE SHALL BE INDENTED BY ETCHING. AND LETTER SHALL BE BLACK COLOUR
 - 3) MIN. CHARACTER SIZE SHALL BE 0.1575" [4 mm] & DEPTH OF INDENTATION SHALL BE MIN. 0.01" [0.25mm]. (e.g.- Pressure)
 - 4) MATERIAL OF CONSTRUCTION OF NAME PLATE - AISI304
 - 5) ASME CERTIFICATION SYMBOL STAMP TO BE PUNCHED AFTER OBTAINING AUTHORIZATION FROM 'AI' AND IN HIS PRESENCE.
 - 6) REFER G.A. DRAWING NUMBER : E-23020-ME-776-GAD-0002
 - 7) NAME PLATE THICKNESS 0.0788" [2mm].
 - 8) TOTAL QTY.- 01 NO.
 - 9) ** YEAR OF BUILT SHALL CORRESPOND TO THE DATE OF APPLYING "CODE STAMP" AND SHALL BE HARD PUNCHED PHYSICALLY.
 - 10) NATIONAL BOARD SYMBOL SHALL BE HARD PUNCH AFTER OBTAINING APPROVAL FROM AI.
 - 11) NATIONAL BOARD SR. NO. TO BE ALLOCATED BY MANAGER QAC. AND SHALL BE HARD PUNCHED USING LETTERS OF AT LEAST 0.236" [6MM] HEIGHT.
 - 12) LETTERS SHALL BE AS FOLLOWS :-
PRAJ INDUSTRIES LTD. : TREBUCHET MS.
OTHERS : ARIAL NARROW

"AS BUILT"

ASME

| REV. NO. | DESCRIPTION | DRAWN | CHKD. | APPD. | DATE |
|----------|----------------------|-------|-------|-------|------------|
| 3 | REVISED FOR AS BUILT | GM | SRM | SMR | 12-01-2023 |
| 2 | REVISED AS MARKED | GM | SRM | SMR | 21-10-2022 |
| 1 | ISSUED FOR APPROVAL | GM | SRM | SMR | 15-09-2022 |
| 0 | ISSUED FOR APPROVAL | GM | SRM | SMR | 04-08-2022 |

AIR PRODUCTS

CLIENT : WORLD ENERGY PARAMOUNT
EQUIPMENT OWNER: AIR PRODUCTS MANUFACTURING LLC
PROJECT : WORLD ENERGY RENEWABLES PROJECT
PROJECT LOCATION: WORLD ENERGY, PARAMOUNT, CA, USA

P.O. NO. : 4505704449
CLIENT DOC. NO. : EN207124-PRAJ-9V3-00028
CLIENT REV. NO.

THIS DWG. IS THE PROPERTY OF PRAJ INDUSTRIES LTD. AND SHOULD NOT BE REPRODUCED WITHOUT WRITTEN CONSENT FROM **PRAJ INDUSTRIES LTD.**
"PRAJ TOWER", Bhumkar Chowk, Hinjewadi, Pune-411 057. (INDIA)

TITLE : NAME PLATE DETAIL DRAWING FOR 19-D-776 PLANT AIR RECEIVER FOR BLEACHING FILTERS

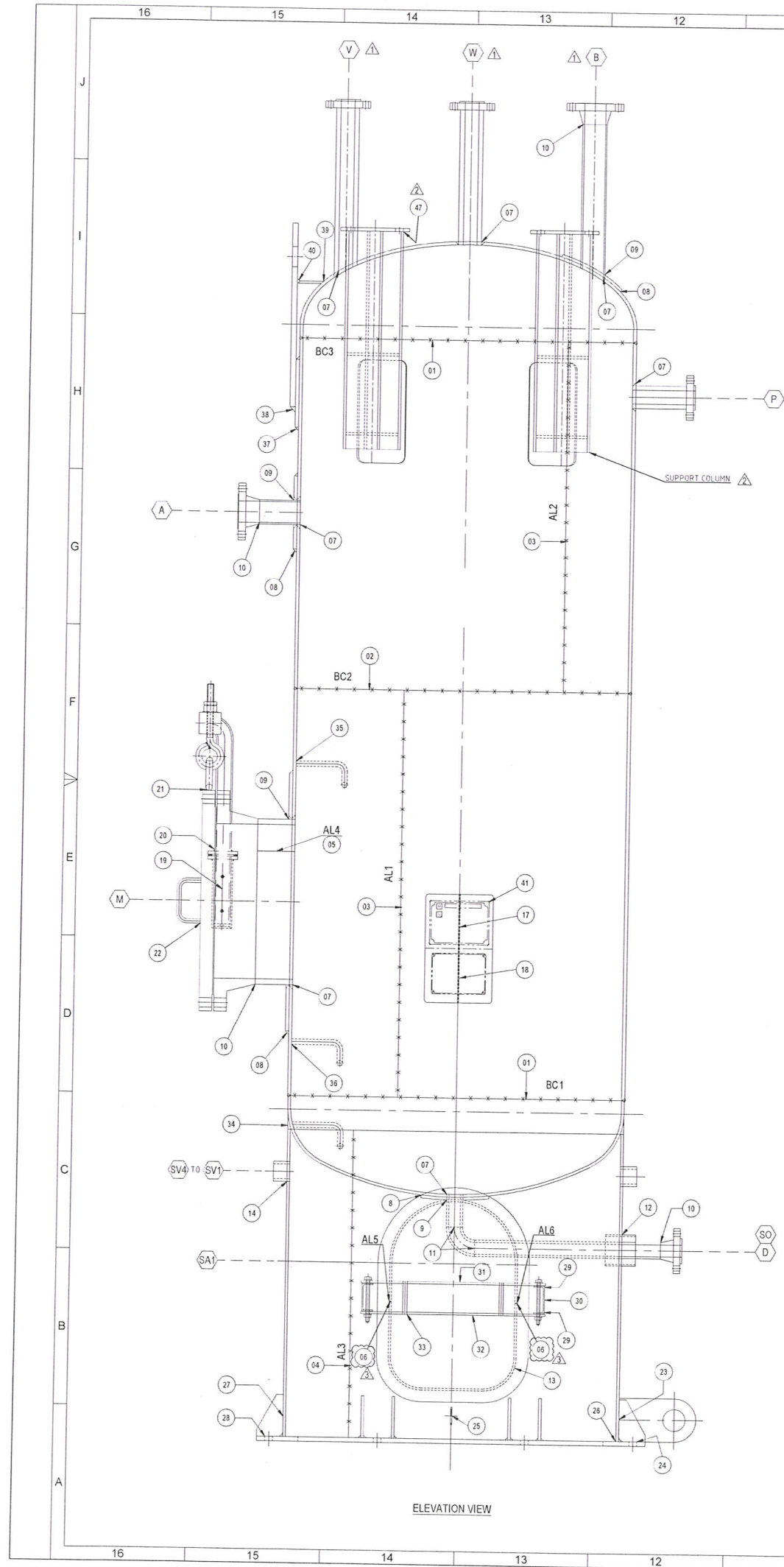
DWG. NO. E-23020-ME-776-NPD-0002

SHEET 2 OF 2

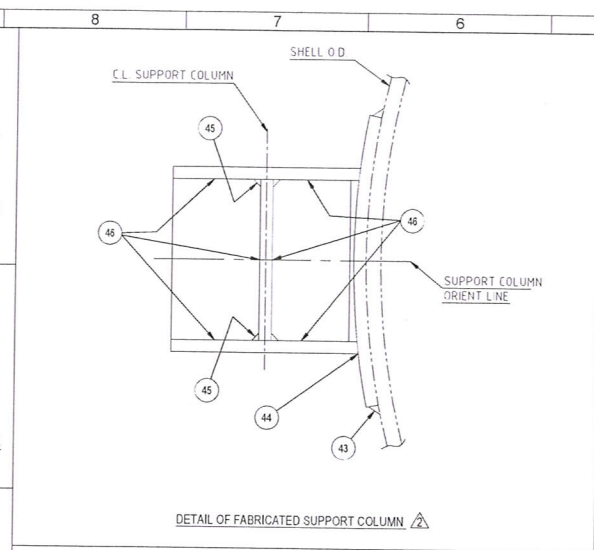
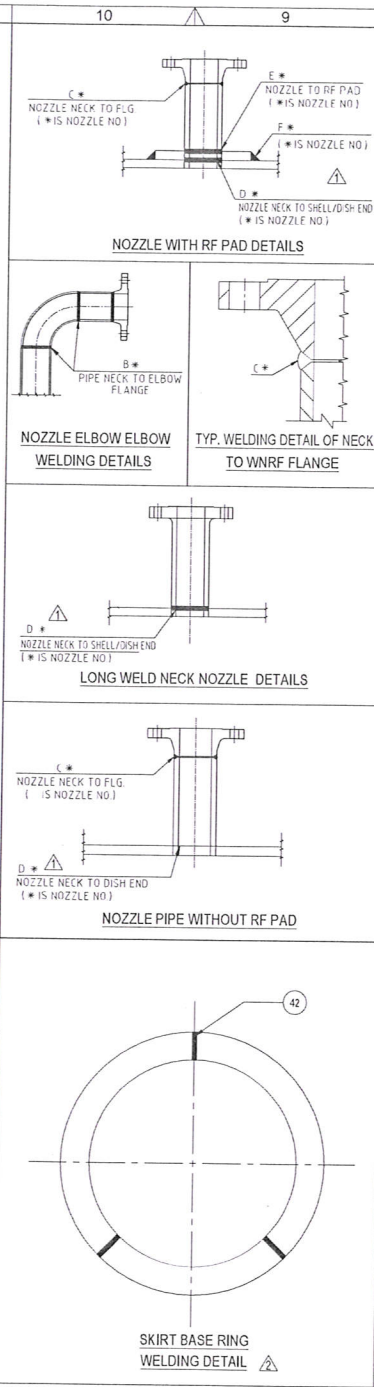
REV. 3

DRG. PAPER SIZE: A3

PIL JOB CODE E-23020



ELEVATION VIEW



| WELD JOINTS DETAIL | | |
|--------------------|--|----------------------------|
| SR NO | DESCRIPTION | WELD JOINT NO. |
| 01 | MAIN SHELL TO TOP D/S END / BOTTOM DISH END C-SEAM | BC1 & BC3 |
| 02 | MAIN SHELL C-SEAM | BC2 |
| 03 | MAIN SHELL L-SEAM | AL1 TO AL2 |
| 04 | BOTTOM SKIRT SHELL L-SEAM | AL3 |
| 05 | M NOZZLE NECK L-SEAM | AL4 |
| 06 | SKIRT MANWAY SLEEVE PLATE TO PLATE | AL5 TO AL6 |
| 07 | NOZZLE NECK TO MAIN SHELL / DISH END | DA, DB, DD, DM, DP, DV, DW |
| 08 | RF PAD TO MAIN SHELL / DISH END | FA, FB, FD, FM |
| 09 | NOZZLE NECK TO RF PAD | EA, EB, ED, EM |
| 10 | NOZZLE NECK TO WNRF FLANGE | CA, CB, CD, CM |
| 11 | NOZZLE PIPE TO ELBOW | BD-1 TO BD-2 |
| 12 | SO PIPE TO SKIRT SHELL | FSOPSS-1 TO FSOPSS-2 |
| 13 | SA SKIRT ACCESS TO SKIRT SHELL | FSASASS-1 |
| 14 | SKIRT VENT PIPE TO SKIRT SHELL (SV1 TO SV4) | FSPVSS-1 TO FSPVSS-8 |
| 15 | DELETED | - |
| 16 | DELETED | - |
| 17 | NAME PLATE BRACKET TO SHELL | FNPBS-1 TO FNPBS-2 |
| 18 | NAME PLATE BRACKET TO BRACKET | FNPBB-1 TO FNPBB-2 |
| 19 | M MANHOLE DAVIT SUPPORT PLATE TO NOZZLE FLANGE | FMDSPNF-1 |
| 20 | M MANHOLE DAVIT SUPPORT PLATE TO DAVIT PIPE | FMDSPDP-1 TO FMDSPDP-2 |
| 21 | M MANHOLE SUPPORT EYE BOLT BAR TO BLIND FLANGE | FMSEBBBF-1 TO FMSEBBBF-2 |
| 22 | M MANHOLE HANDLE TO BLIND FLANGE | FMHBF-1 TO FMHBF-4 |
| 23 | TAILING LUG TO SKIRT SHELL | FTLSS-1 TO FTLSS-2 |
| 24 | TAILING LUG TO BASE RING | FTLBR-1 TO FTLBR-2 |
| 25 | EARTHING CLEAT TO SKIRT SHELL | FECS-1 TO FECS-4 |
| 26 | SKIRT SHELL TO BASE PLATE | FSSBP-1 TO FSSBP-2 |
| 27 | GUSSET PLATE TO SKIRT SHELL | FGPSS-1 TO FGPSS-32 |
| 28 | GUSSET PLATE TO ANCHOR CHAIR BASE PLATE | FGPACBP-1 TO FGPACBP-32 |
| 29 | FABRICATION CHANNEL PLATE TO CHANNEL PLATE | FFCCP-1 TO FFCCP-4 |
| 30 | FABRICATION CHANNEL PLATE TO SKIRT SHELL | FFCPS-1 TO FFCPS-2 |
| 31 | COVER TOP PLATE TO COVER PLATE | FCTPCP-1 TO FCTPCP-2 |
| 32 | COVER BOTTOM PLATE TO COVER PLATE | FCBPCP-1 TO FCBPCP-2 |
| 33 | ROUND BAR TO COVER TOP PLATE/BOTTOM PLATE | FRBCTBPB-1 TO FRBCTBPB-8 |
| 34 | SKIRT SHELL TO BOTTOM DISH END | FSSBDE-1 |
| 35 | GRAB RUNG BAR TO SHELL | FGRBS-1 TO FGRBS-2 |
| 36 | LADDER RUNG BAR TO SHELL / DISH END | FLRBSDE-1 TO FLRBSDE-4 |
| 37 | SHELL TO LIFTING LUG PAD PLATE | FSLPP-1 TO FSLPP-2 |
| 38 | LIFTING LUG PAD PLATE TO LIFTING LUG | FLPLP-1 TO FLPLP-2 |
| 39 | DISH END TO LIFTING LUG SUPPORT PLATE | FDELLSP-1 TO FDELLSP-2 |
| 40 | LIFTING LUG SUPPORT PLATE TO LIFTING LUG | FLLSPL-1 TO FLLSPL-2 |
| 41 | NAME PLATE BRACKET TO NAME PLATE | FNPBNP-1 TO FNPBNP-8 |
| 42 | SUPPORT BASE RING SEGMENT WELD | FBSR-1 TO FBSR-3 |
| 43 | COLUMN SUPPORT PAD TO SHELL | FCSPS-1 TO FCSPS-4 |
| 44 | COLUMN SUPPORT PLATE TO PAD | FCSP-1 TO FCSP-4 |
| 45 | COLUMN SUPPORT PLATE TO PLATE | FCSP-1 TO FCSP-16 |
| 46 | COLUMN SUPPORT PLATE TO GUSSET | FCSPG-1 TO FCSPG-96 |
| 47 | COLUMN SUPPORT PLATE TO BOLTING PLATE | FCSPBP-1 TO FCSPBP-4 |

Reviewed
R.J. Shah
27/01/2023
(R.J.)



LRQA Verification Limited
☐ Witnessed ☐ Monitored ☒ Reviewed
 Name : Niraj Shah
 Office : Ahmedabad
 Signature: [Signature]
 Date: 19/01/23

"AS BUILT"

| | | | | | | |
|---|----------------------|----|----|---------|-----|------------|
| 3 | REVISED FOR AS BUILT | -- | UM | SRM | SPR | 12-01-2023 |
| 2 | REVISED AS MARKED | -- | GM | SRM | SPR | 05-12-2022 |
| 1 | REVISED AS MARKED | -- | GM | SRM | SPR | 19-10-2022 |
| 0 | ISSUED FOR APPROVAL | -- | GM | SRM/SMR | SK | 15-06-2022 |

| REV. NO. | DESCRIPTION | ZONE NO. | DRAWN | CHKD. | APPD. | DATE |
|-----------|-------------|----------|-------|-------|-------|------|
| REVISIONS | | | | | | |

MANUFACTURING ADDRESS :-
 PRAJ INDUSTRIES LTD. SEZ UNIT-I,
 PLOT NO.307 TO 314, SECTOR IV, KANDLA SPECIAL ECONOMIC ZONE,
 GANDHIDHAM, KUTCH, GUJARAT, 370230, INDIA
 MANUFACTURER'S SERIAL NUMBER :-
 E-23020-19-D-776 (QTY - 1 No.)

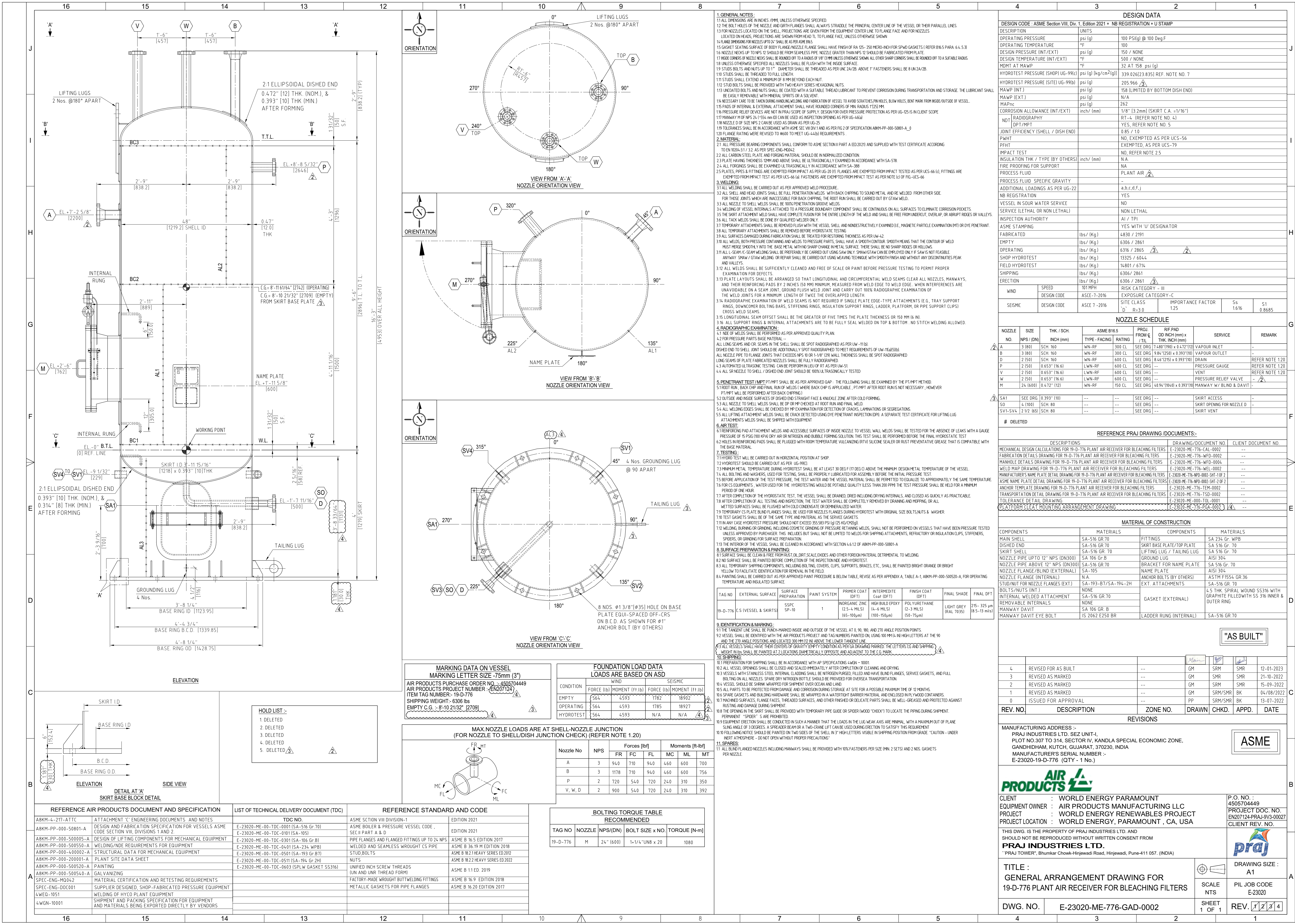
ASME

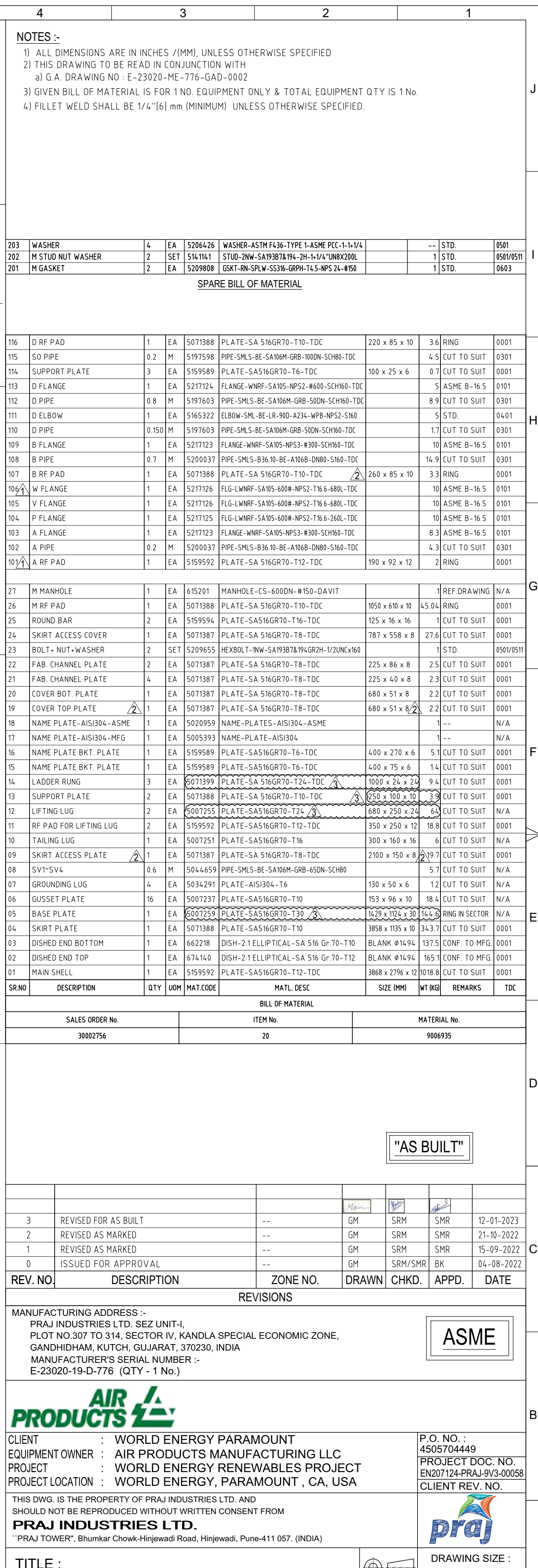
AIR PRODUCTS

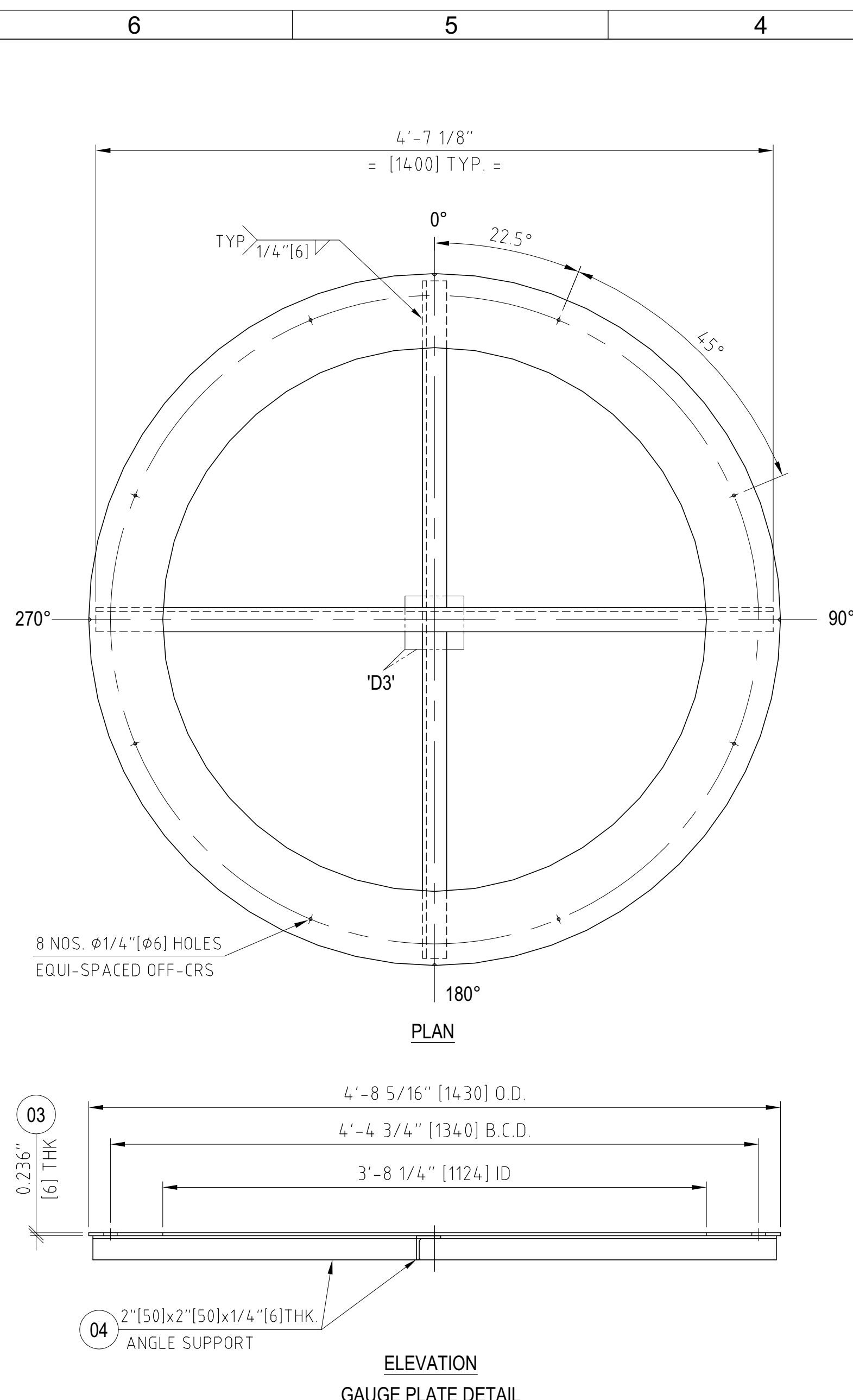
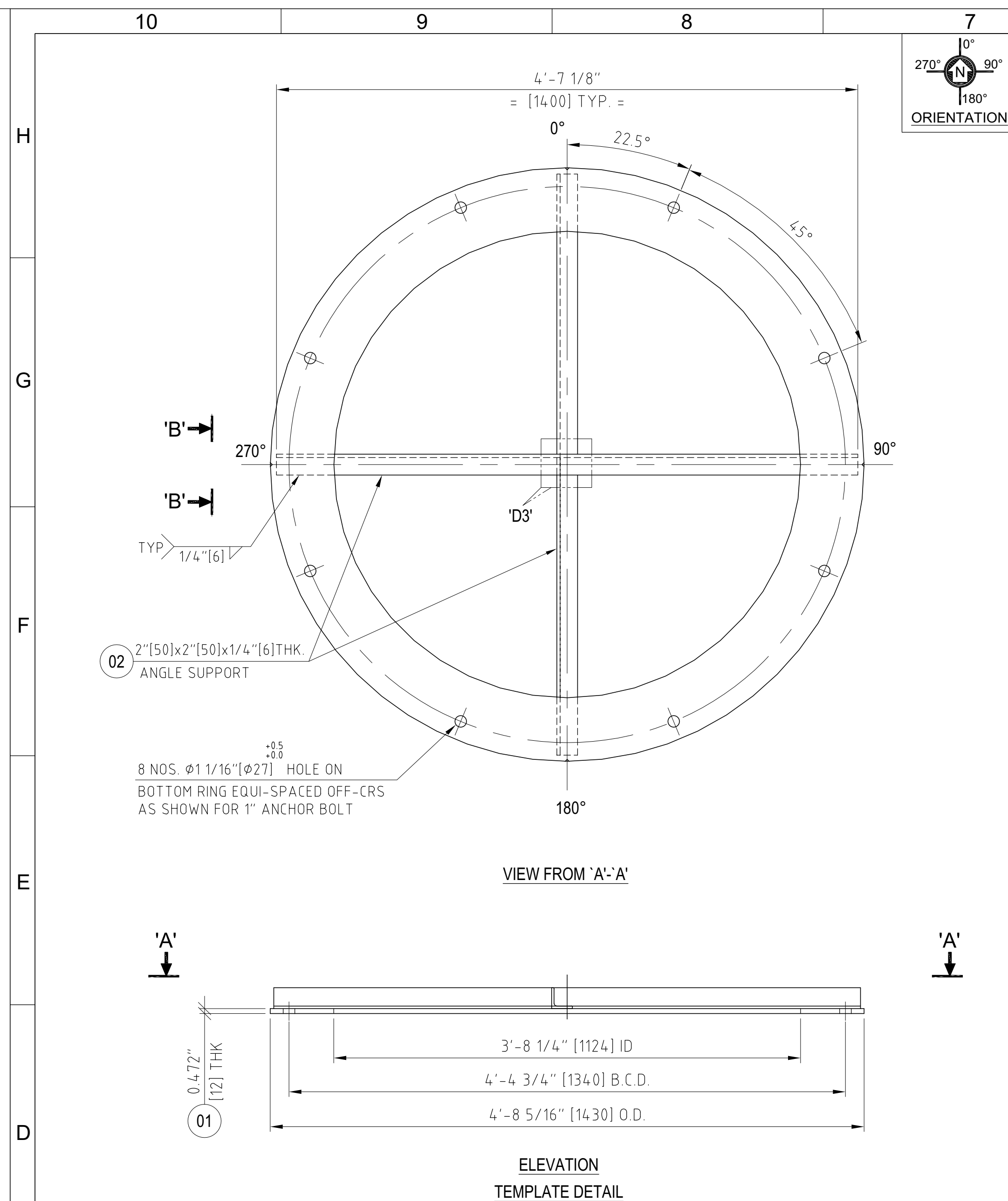
| | | | |
|------------------|-----------------------------------|-----------------|---------------------------------|
| CLIENT | WORLD ENERGY PARAMOUNT | P.O. NO. : | 4505704449 |
| EQUIPMENT OWNER | AIR PRODUCTS MANUFACTURING LLC | PROJECT | WORLD ENERGY RENEWABLES PROJECT |
| PROJECT LOCATION | WORLD ENERGY, PARAMOUNT , CA, USA | CLIENT REV. NO. | |

THIS DWG. IS THE PROPERTY OF PRAJ INDUSTRIES LTD. AND SHOULD NOT BE REPRODUCED WITHOUT WRITTEN CONSENT FROM
PRAJ INDUSTRIES LTD.
 "PRAJ TOWER", Bhumkar Chovk-Hinjewadi Road, Hinjewadi, Pune-411 057, (INDIA)

| | | | |
|----------|---|----------------|----------|
| TITLE : | WELD MAP DRAWING FOR 19-D-776 PLANT AIR RECEIVER FOR BLEACHING FILTERS | DRAWING SIZE : | A1 |
| DWG. NO. | E-23020-ME-776-WEL-0002 | SCALE | N.T.S. |
| | | PIL JOB CODE | E-23020 |
| | | SHEET | 1 OF 1 |
| | | REV. | 01/02/23 |







NOTES :-

1. ALL DIMENSION ARE IN INCHES [mm]. UNLESS OTHERWISE SPECIFIED.
2. ANCHOR BOLT HOLES IN BOX TEMPLATE & BASE RING OF VESSEL SHALL BE DRILLED USING SAME GAUGE PLATE.
3. MARKING - THE TOP SURFACE ONLY OF THE ANCHOR BOLT TEMPLATE SHALL BE PAINTED BLACK THEN THE FOLLOWING SHALL BE MARKED ON THE TOP SURFACE OF ANCHOR BOLT TEMPLATE AND GAUGE PLATE.
 - i) EQUIPMENT NUMBER SHALL BE MARKED WITH BOTH DIE STAMP & WHITE PAINT.
 - ii) 0° , 90° , 180° & 270° SHALL BE MARKED ON THE TOP OF THE TEMPLATE AT THEIR RESPECTIVE NOTCH LOCATIONS AS WELL AS EQUIPMENT TAG NO USING BLACK PAINT OR PERMANENT MARKER. THE TEMPLATE PAIRS SHALL ALSO BE MARKED SO THEY CAN BE CORRECTLY PAIRED WHEN REASSEMBLED
 - iii) ORIENTATION NOTCHES CUT PERPENDICULARLY AS SHOWN.
 - iv) MARK "NORTH" AND "THIS SIDE UP", TAG NUMBER OF THE EQUIPMENT, TEMPLATE WEIGHT IN LBS ON THE TEMPLATE
4. FOR GENERAL ASSEMBLY REFER DRG. NO. E-23020-ME-776-GAD-0002 BEFORE DRILLING OF TEMPLATE.
5. FOR DIVIDED TYPE CONSTRUCTION OF ANCHOR BOLT TEMPLATE, THE BOLT HOLES SHALL BE MADE IN THE FULLY ASSEMBLED CONDITION AFTER SECTIONING.
6. THE ANCHOR BOLT TEMPLATE SHALL BE DELIVERED TO SITE IN ADVANCE OF THE SHIPMENT OF VESSEL AND PRIOR TO THE COMMENCEMENT OF THE FOUNDATION INSTALLATION.
7. GAUGE PLATE FOR USE AT SHOP SHALL NOT BE SUPPLIED AT SITE.
8. THE BOTTOM SURFACE FLATNESS OF THE TEMPLATE SHALL BE WITHIN $1/4"$ [6] mm AFTER WELDING OF THE ANGLE SUPPORT IS COMPLETED.
9. GIVEN BILL OF MATERIAL FOR 1 EQUIPMENT ONLY & TOTAL QTY :- 1 No.
10. FILLET WELD SHALL BE $1/4"$ [6] mm (MINIMUM) UNLESS OTHERWISE SPECIFIED.
11. WELD SEAMS OF RING SEGMENTS SHALL NOT COINCIDE WITH THE BOLT HOLES

12. PAINTING :-

EXTERNAL SURFACE OF TEMPLATE SHALL BE CLEANED BY WIRE BRUSH & PAINTED WITH ONE COAT OF RUST PREVENTIVE COATING OF RED OXIDE.

AIR PRODUCTS APPLICABLE SPECIFICATION:-

4WGN-10001 :- SHIPMENT AND PACKING SPECIFICATION FOR EQUIPMENT AND MATERIALS

| DESCRIPTION OF DIMENSIONAL CHECK | TOLERANCE |
|--|----------------------------|
| TEMPLATE / GAUGE PLATE BOLT CIRCLE DIAMETER | + / - 1 mm |
| TEMPLATE / GAUGE PLATE OD | + / - 5 mm |
| TEMPLATE / GAUGE PLATE ID | + / - 5 mm |
| BOLT HOLE DIAMETER | +0.5 / -0 mm |
| ORIENTATION OF NOTCHES / BOLT HOLES | + / - 2 mm |
| ALIGNMENT OF BOLT HOLES BETWEEN UPPER AND BOTTOM PLATE FOR ANGLE SUPPORT TYPE PLATES. | + / - 2 mm IN ANY PLATE |

GAUGE PLATE WEIGHT= 93 lb [42 kg] APPROX.

| | | | | | | | | | |
|----|-------------------|----|----|---------|------------------------------|-------------------------|----|----------------|------|
| 04 | SUPP. ANGLE GAUGE | 13 | KG | 5008158 | ANGLE-IS2062-E250-A-ISA50-T6 | 2800 LG | 13 | CUT TO SUIT | N.A. |
| 03 | GAUGE PLATE | 1 | EA | 5189260 | PLATE-IS2062-E250-GR A-T6 | O.D.1430 x I.D.1124 x 6 | 29 | RING IN SECTOR | N.A. |

ANCHOR BOLT TEMPLATE WEIGHT= 71 Kg APPROX.

| | | | | | | | | | |
|----|---------------|-----|-----|----------|-------------------------------|---------------------------|------|----------------|-----|
| 02 | ANGLE SUPPORT | 13 | KG | 5008158 | ANGLE-IS2062-E250-BR-ISA50-T6 | 2800 LG | 13 | CUT TO SUIT | N.A |
| 01 | BOTTOM PLATE | 1 | EA | 5189263 | PLATE-IS2062-E250-GR-A-T12 | O.D.14.30 x I.D.1124 x 12 | 58 | RING IN SECTOR | N.A |
| NO | DESCRIPTION | QTY | UOM | MAT CODE | MATL DESC | SIZE (MM) | (KG) | REMARKS | TD |

| | | |
|------------------|----------|--------------|
| BILL OF MATERIAL | | |
| SALES ORDER No | Item No. | Material No. |
| - | - | - |

"AS BUILT"

| | | | | | | |
|----------|---------------------|----------|-------|-------|-------|-----------|
| | | | | | | |
| | | | | | | |
| 2 | AS BUILT | -- | ABP | SRM | SMR | 27-01-202 |
| 1 | REVISED AS MARKED | -- | GM | SRM | SMR | 04-08-202 |
| 0 | ISSUED FOR APPROVAL | -- | PP | SRM | SMR | 16-06-202 |
| REV. NO. | DESCRIPTION | ZONE NO. | DRAWN | CHKD. | APPD. | DATE |

REVISIONS

MANUFACTURING ADDRESS :-
 PRAJ INDUSTRIES LTD. SEZ UNIT-I,
 PLOT NO.307 TO 314, SECTOR IV, KANDLA SPECIAL ECONOMIC ZONE,
 GANDHIDHAM, KUTCH, GUJARAT, 370230, INDIA
 MANUFACTURER'S SERIAL NUMBER :-
 E-23020-19-D-776 (QTY - 1 No.)

ASME



| | |
|--------------------|-----------------------------------|
| CLIENT : | WORLD ENERGY PARAMOUNT |
| EQUIPMENT OWNER : | AIR PRODUCTS MANUFACTURING LLC |
| PROJECT : | WORLD ENERGY RENEWABLES PROJECT |
| PROJECT LOCATION : | WORLD ENERGY, PARAMOUNT , CA, USA |

| | |
|-------------------|-----------------------|
| P.O. NO. : | 4505704449 |
| PROJECT DOC. NO. | EN207124-PAJ-9V3-0006 |
| CLIENT REV. NO. : | |

THIS DWG. IS THE PROPERTY OF PRAJ INDUSTRIES LTD. AND
SHOULD NOT BE REPRODUCED WITHOUT WRITTEN CONSENT FROM
PRAJ INDUSTRIES LTD.
"PRAJ TOWER", Bhumkar Chowk-Hinjewadi Road, Hinjewadi, Pune-411 057. (INDIA)



TITLE : ANCHOR TEMPLATE DRAWING FOR
PLANT AIR RECEIVER FOR BLEACHING FILTERS
TAG NO. 19-D-776

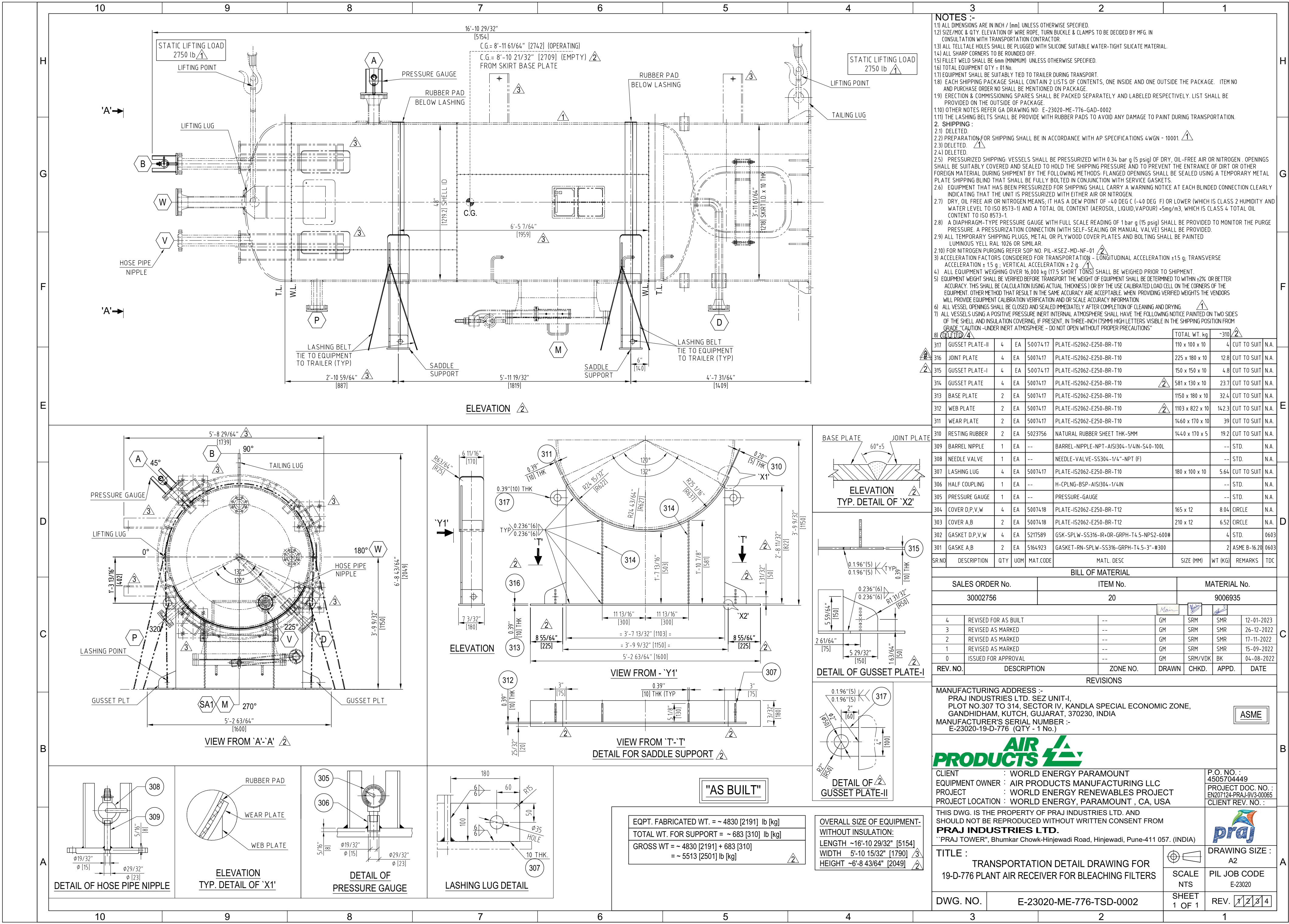
| | |
|---|----------------------|
| | DRAWING SIZE : A2 |
|---|----------------------|

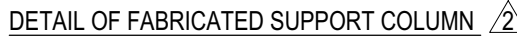
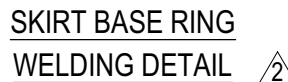
PLANT AIR RECEIVER FOR BLEACHING FILTERS
TAG NO. 19-D-776

| | |
|-------|------------------------|
| SCALE | PIL JOB CODE |
| NTS | E-23020-ME-776-TEM-000 |

| | |
|----------|-------------------------|
| DWG. NO. | E-23020-ME-776-TEM-0002 |
|----------|-------------------------|

| | | | | | |
|-----------------|--|---|---|---|--|
| NTS | E-25020-ME-770-TEMP-000 | | | | |
| SHEET 1 OF 1 | REV. <table border="1"> <tr> <td>0</td> <td>1</td> <td>2</td> <td></td> </tr> </table> | 0 | 1 | 2 | |
| 0 | 1 | 2 | | | |





"AS BUILT"

ASM

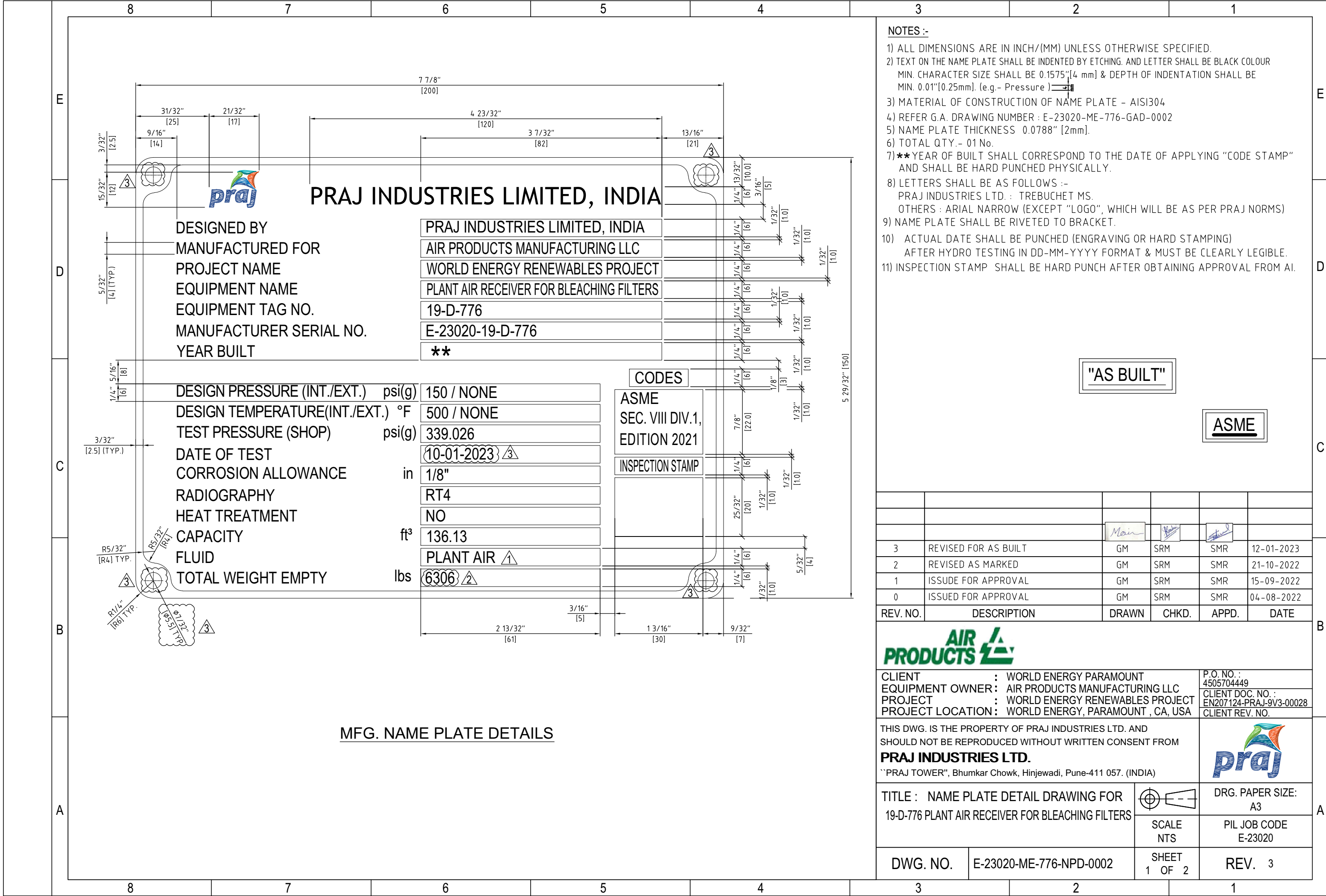
| |
|--------------------------|
| P.O. NO. : 4505704449 |
| PROJECT DOC. NO. |
| CLIENT REV. NO. |

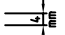


| | |
|--------------|---------|
| DRAWING SIZE | A1 |
| PIL JOB CODE | E 22020 |

REV.

| | | |
|---|---|---|
| 0 | 1 | 2 |
|---|---|---|




- NOTES :-**
- 1) ALL DIMENSIONS ARE IN INCH/(MM) UNLESS OTHERWISE SPECIFIED.
 - 2) TEXT ON THE NAME PLATE SHALL BE INDENTED BY ETCHING. AND LETTER SHALL BE BLACK COLOUR MIN. CHARACTER SIZE SHALL BE 0.1575" [4 mm] & DEPTH OF INDENTATION SHALL BE MIN. 0.01" [0.25mm]. (e.g.- Pressure) 
 - 3) MATERIAL OF CONSTRUCTION OF NAME PLATE - AISI304
 - 4) REFER G.A. DRAWING NUMBER : E-23020-ME-776-GAD-0002
 - 5) NAME PLATE THICKNESS 0.0788" [2mm].
 - 6) TOTAL QTY.- 01 No.
 - 7) ** YEAR OF BUILT SHALL CORRESPOND TO THE DATE OF APPLYING "CODE STAMP" AND SHALL BE HARD PUNCHED PHYSICALLY.
 - 8) LETTERS SHALL BE AS FOLLOWS :-
PRAJ INDUSTRIES LTD. : TREBUCHET MS.
OTHERS : ARIAL NARROW (EXCEPT "LOGO", WHICH WILL BE AS PER PRAJ NORMS)
 - 9) NAME PLATE SHALL BE RIVETED TO BRACKET.
 - 10) ACTUAL DATE SHALL BE PUNCHED (ENGRAVING OR HARD STAMPING) AFTER HYDRO TESTING IN DD-MM-YYYY FORMAT & MUST BE CLEARLY LEGIBLE.
 - 11) INSPECTION STAMP SHALL BE HARD PUNCH AFTER OBTAINING APPROVAL FROM AI.

"AS BUILT"

ASME


| REV. NO. | DESCRIPTION | DRAWN | CHKD. | APPD. | DATE |
|----------|----------------------|-------|-------|-------|------------|
| 3 | REVISED FOR AS BUILT | GM | SRM | SMR | 12-01-2023 |
| 2 | REVISED AS MARKED | GM | SRM | SMR | 21-10-2022 |
| 1 | ISSUE FOR APPROVAL | GM | SRM | SMR | 15-09-2022 |
| 0 | ISSUED FOR APPROVAL | GM | SRM | SMR | 04-08-2022 |




CLIENT : WORLD ENERGY PARAMOUNT
EQUIPMENT OWNER : AIR PRODUCTS MANUFACTURING LLC
PROJECT : WORLD ENERGY RENEWABLES PROJECT
PROJECT LOCATION : WORLD ENERGY, PARAMOUNT , CA, USA

P.O. NO. : 4505704449
CLIENT DOC. NO. : EN207124-PRAJ-9V3-00028
CLIENT REV. NO.

THIS DWG. IS THE PROPERTY OF PRAJ INDUSTRIES LTD. AND SHOULD NOT BE REPRODUCED WITHOUT WRITTEN CONSENT FROM
PRAJ INDUSTRIES LTD.
"PRAJ TOWER", Bhumkar Chowk, Hinjewadi, Pune-411 057. (INDIA)



TITLE : NAME PLATE DETAIL DRAWING FOR
19-D-776 PLANT AIR RECEIVER FOR BLEACHING FILTERS


SCALE
NTS

DRG. PAPER SIZE:
A3
PIL JOB CODE
E-23020

DWG. NO. E-23020-ME-776-NPD-0002

SHEET
1 OF 2

REV. 3

