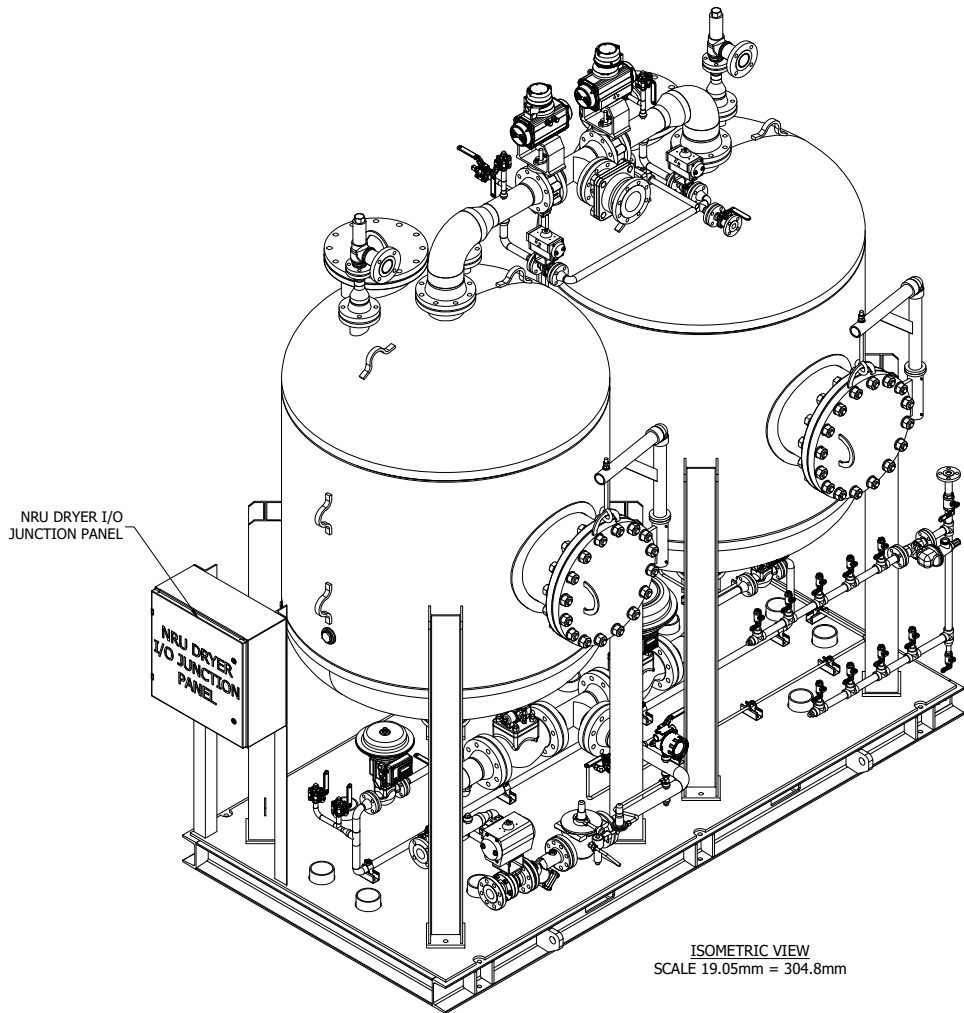
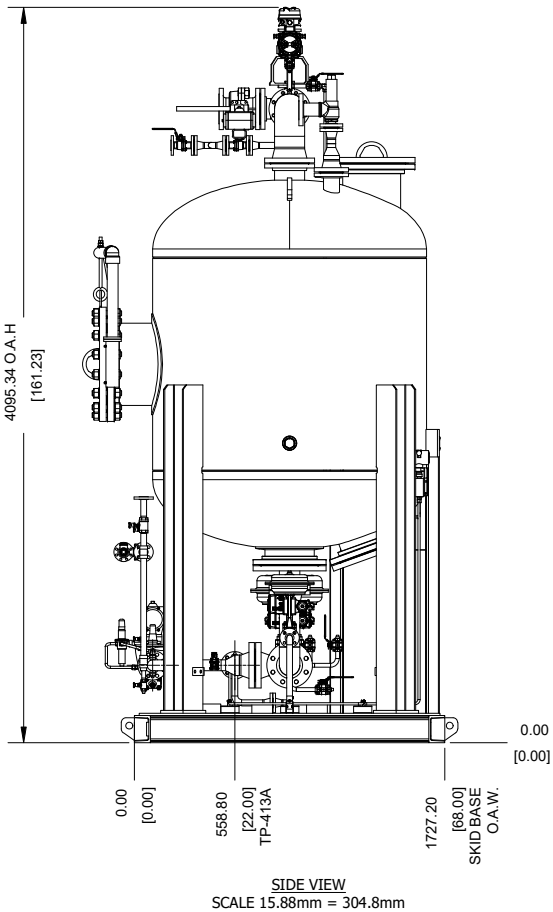
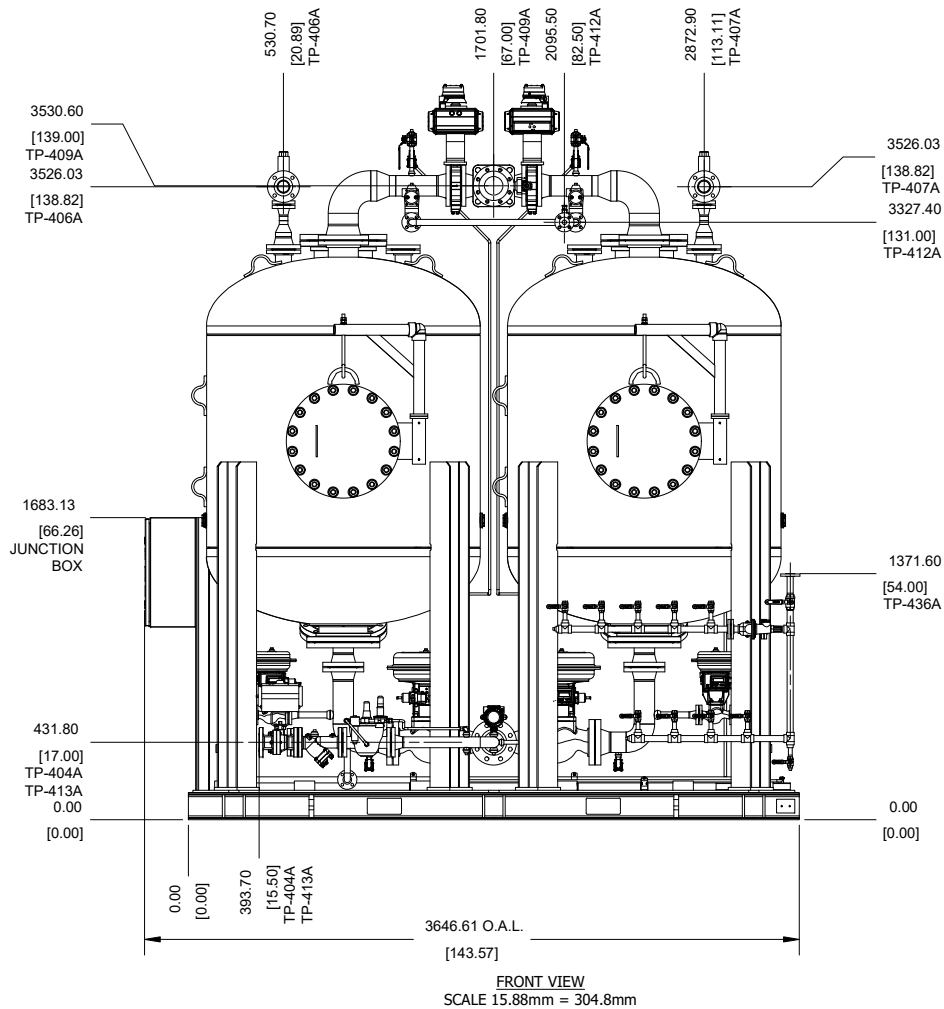
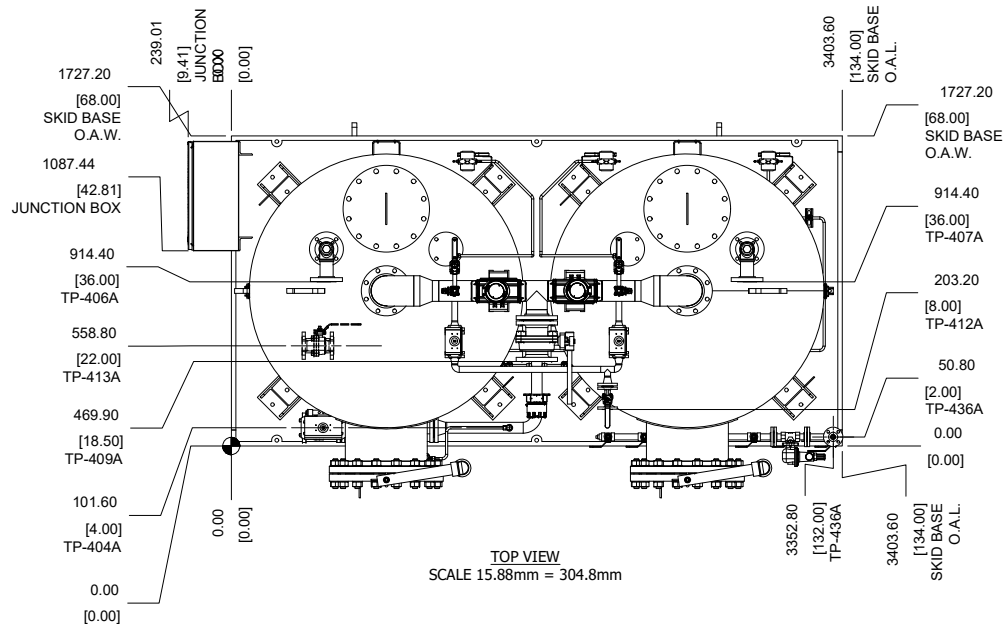


NOZZLE CHART			
VESSEL	NOZZLE	DESCRIPTION	TIE POINTS
V-4002A & B	A	18.00" #150 RF FLANGE (SCH 80)	N/A
V-4002A & B	B	12.00" #150 RF FLANGE (SCH 80)	N/A
V-4002A	C	10.00" #150 RF FLANGE (SCH 80)	N/A
V-4002B	D	10.00" #150 RF FLANGE (SCH 80)	N/A
V-4002A & B	E	6.00" #150 RF FLANGE (SCH 80)	N/A
V-4002A	F	3.00" #150 RF FLANGE (SCH 80)	N/A
V-4002B	G	3.00" #150 RF FLANGE (SCH 80)	N/A
V-4002A	H	2.00" NPT CLASS 3000 THREADED FULL COUPLING	N/A
V-4002B	J	2.00" NPT CLASS 3000 THREADED FULL COUPLING	N/A

				TOLERANCES TOLERANCES UNLESS OTHERWISE NOTED: MACHINING: ±0.10", ±0.25mm STRUCT.: ±1/16", ±1.60mm OTHERS: ±1/32", ±0.80mm NON-CUMULATIVE	<b>TITLE:</b>  VESSEL GA DRAWING  NRU DRYER VESSELS  V-4002A, V-4002B	<b>PROJECT:</b>  RUDARPA RNG PROJECT  NORTH COUNTY LANDFILL  BETHLEHEM, NEW HAMPSHIRE	THIS DOCUMENT IS CONFIDENTIAL AND THE EXCLUSIVE PROPERTY OF GAS RNG. IT CANNOT BE USED, COPIED AND/OR COMMUNICATED TO THE THIRD PARTIES WITHOUT THE WRITTEN PERMISSION OF GAS RNG.											
<b>DWG. NO:</b>	<b>REV.</b>			<b>SCALE</b>	-											<b>DWG. NO:</b>	<b>REV.</b>	<b>PAGE</b>
J009-GAS-510-4002	00															J009-GAS-510-4002	00	1/1

DRYER SKID 4011



NOTES:

- DIMENSIONS ARE mm [in]
- SKID SHIPPING WEIGHT(NO FIELD PIPING OR LOOSE SHIP ITEMS): 10,350 LBS
- INSTALLED DRY WEIGHT(INCLUDES FIELD PIPING AND LOOSE SHIP PARTS): 11,500 LBS
- OPERATING WEIGHT(INCLUDES MEDIA WEIGHT): 22,500 LBS

TABLE		
NOZZLE	SERVICE	SIZE/TYPE
TP 404A	GAS INLET (FROM V-4001)	2" CL300 RF ANSI FLANGE
TP 406A	SAFETY VALVE PRV-4002A OUTLET	2 1/2" CL150 RF ANSI FLANGE
TP 407A	SAFETY VALVE PRV-4002A OUTLET	2 1/2" CL150 RF ANSI FLANGE
TP 409A	DRY GAS OUTLET (TO NRU)	4" CL150 RF ANSI FLANGE
TP 412A	REGENERATING GAS INLET	1" CL150 RF ANSI FLANGE
TP 413A	WASTE GAS TO VENT VESSEL (V-4006)	2" CL150 RF ANSI FLANGE
TP 436A	INSTRUMENT AIR	1" CL150 RF ANSI FLANGE



TOLERANCES  
TOLERANCES UNLESS  
OTHERWISE NOTED:  
MACHINING: ±.010", ±0.25mm  
STRUCT.: ±1/16", ±1.6mm  
OTHERS: ±1/32", ±0.8mm  
NON-CUMULATIVE

TITLE:

GENERAL ARRANGEMENT DRAWING

NRU DRYER SKID

PROJECT:

RUDARPA RNG PROJECT

NORTH COUNTY LANDFILL

BETHLEHEM, NEW HAMPSHIRE

THIS DOCUMENT IS CONFIDENTIAL AND THE EXCLUSIVE PROPERTY OF GAS RNG. IT CANNOT BE USED, COPIED AND/OR COMMUNICATED TO THE THIRD PARTIES WITHOUT THE WRITTEN PERMISSION OF GAS RNG.

00	INITIAL ISSUED	AU	VM	PL	RF	2021-06-03
REV	MODIFICATIONS / CHANGES	ENG	DRN	CHK	APP	DATE

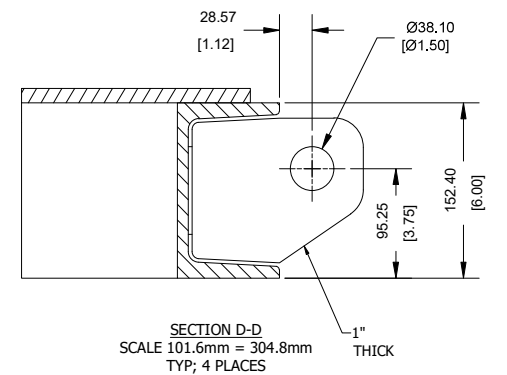
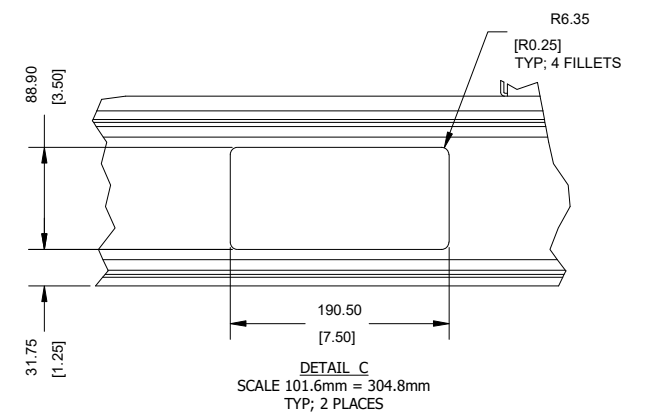
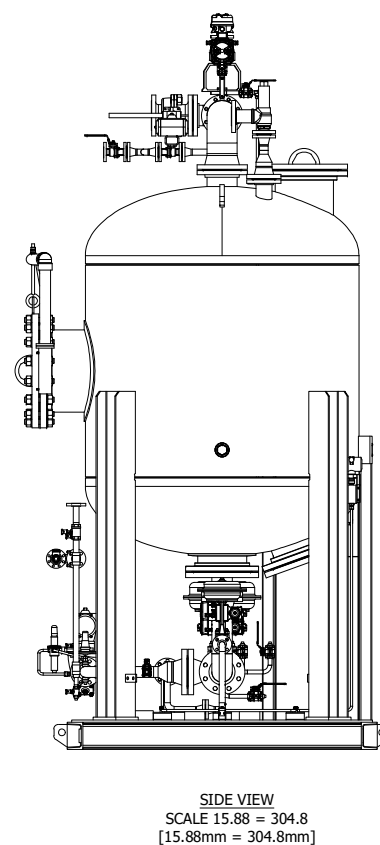
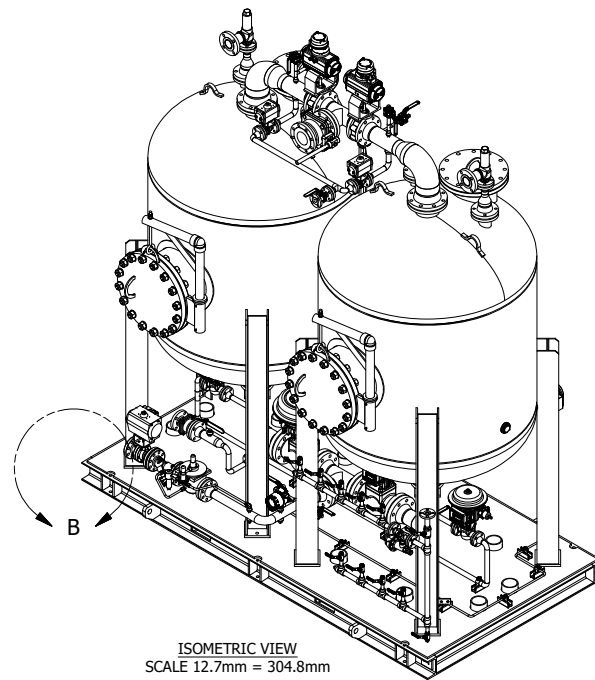


DWG. NO:  
J009-GAS-510-4011

REV.  
00

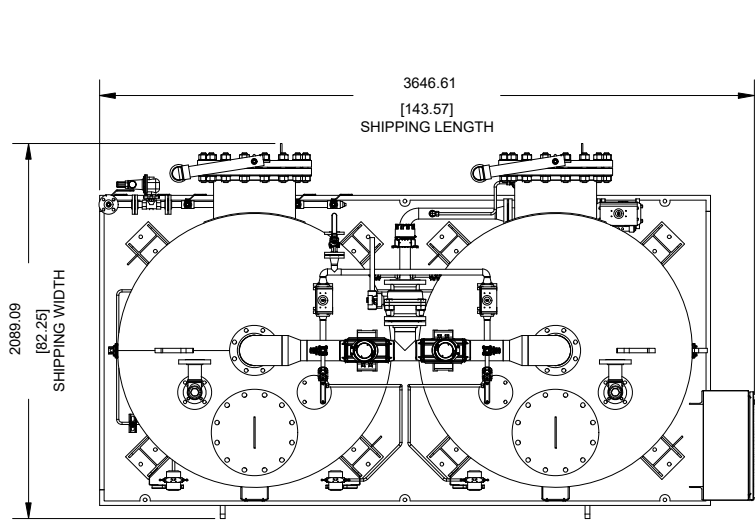
DWG. NO:  
J009-GAS-510-4011

REV. PAGE  
00 1/4

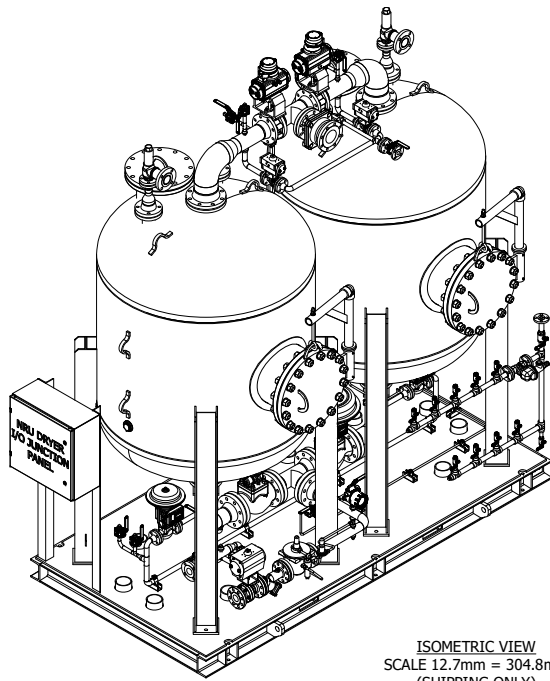


<b>DWG. NO:</b>	<b>REV.</b>	<b>PAGE</b>
J009-GAS-510-4011	00	2/4

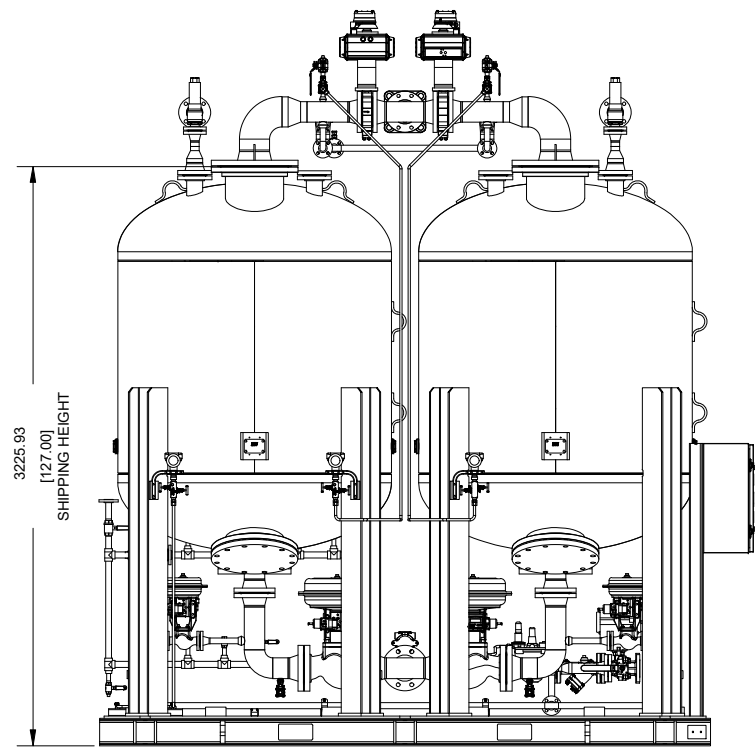




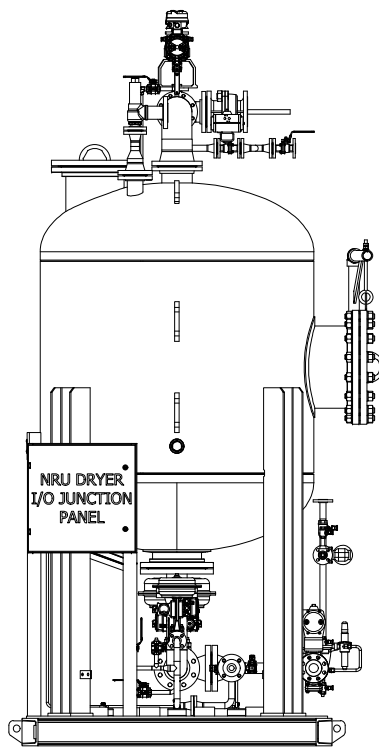
PLAN VIEW  
SCALE 15.88mm = 304.8mm  
(SHIPPING ONLY)



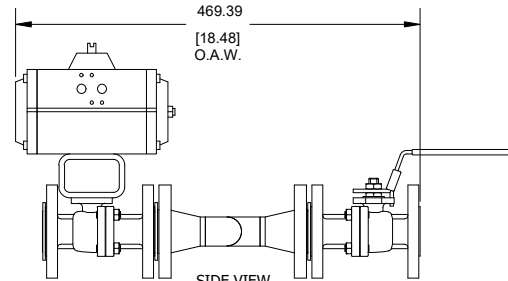
ISOMETRIC VIEW  
SCALE 12.7mm = 304.8mm  
(SHIPPING ONLY)



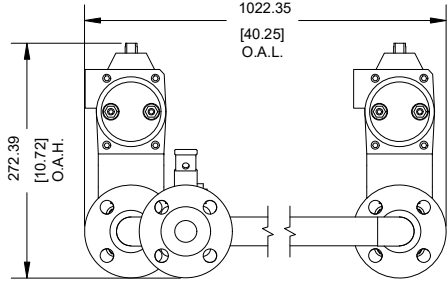
FRONT VIEW  
SCALE 15.88mm = 304.8mm  
(SHIPPING ONLY)



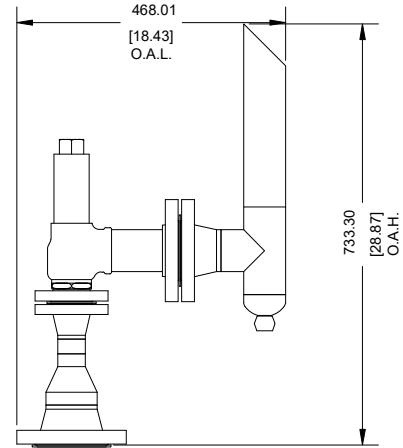
SIDE VIEW  
SCALE 15.88mm = 304.8mm  
(SHIPPING ONLY)



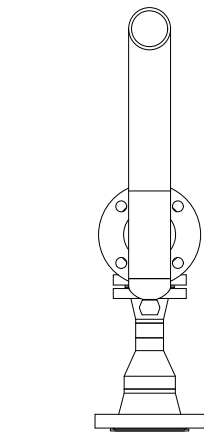
SIDE VIEW  
SCALE 76.2mm = 304.8mm  
(SHIPPED LOOSE/QTY 1)  
ESTIMATED WEIGHT 35 LBS



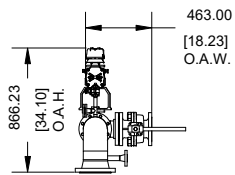
FRONT VIEW  
SCALE 76.2mm = 304.8mm  
(SHIPPED LOOSE/QTY 1)  
ESTIMATED WEIGHT 35 LBS



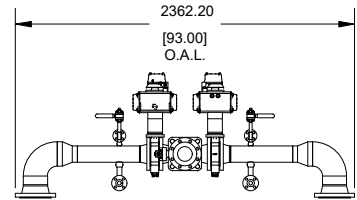
SIDE VIEW  
SCALE 50.8mm = 304.8mm  
(SHIPPED LOOSE/QTY 2)  
ESTIMATED WEIGHT 63 LBS



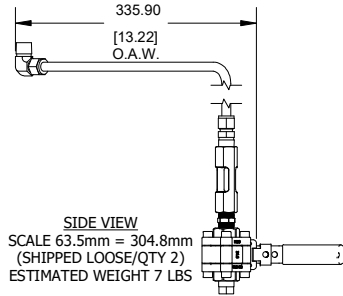
FRONT VIEW  
SCALE 50.8mm = 304.8mm  
(SHIPPED LOOSE/QTY 2)  
ESTIMATED WEIGHT 63 LBS



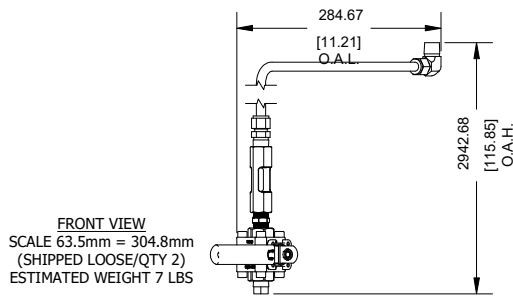
SIDE VIEW  
SCALE 12.7mm = 304.8mm  
(SHIPPED LOOSE/QTY 1)  
ESTIMATED WEIGHT 503 LBS



FRONT VIEW  
SCALE 12.7mm = 304.8mm  
(SHIPPED LOOSE/QTY 1)  
ESTIMATED WEIGHT 503 LBS



SIDE VIEW  
SCALE 63.5mm = 304.8mm  
(SHIPPED LOOSE/QTY 2)  
ESTIMATED WEIGHT 7 LBS



FRONT VIEW  
SCALE 63.5mm = 304.8mm  
(SHIPPED LOOSE/QTY 2)  
ESTIMATED WEIGHT 7 LBS

NOTES:

- DIMENSIONS ARE mm [in]
- SKID SHIPPING WEIGHT(NO FIELD PIPING OR LOOSE SHIP ITEMS): 10,350 LBS
- INSTALLED DRY WEIGHT(INCLUDES FIELD PIPING AND LOOSE SHIP PARTS): 11,500 LBS
- OPERATING WEIGHT(INCLUDES MEDIA WEIGHT): 22,500 LBS



TOLERANCES  
TOLERANCES UNLESS  
OTHERWISE NOTED:  
MACHINING:  $\pm 0.10$ ,  $\pm 0.25$ mm  
STRUCT.:  $\pm 1/16$ ,  $\pm 1.60$ mm  
OTHERS:  $\pm 1/32$ ,  $\pm 0.80$ mm  
NON-CUMULATIVE

SCALE -

TITLE:

GENERAL ARRANGEMENT DRAWING

NRU DRYER SKID

PROJECT:

RUDARPA RNG PROJECT

NORTH COUNTY LANDFILL

BETHLEHEM, NEW HAMPSHIRE

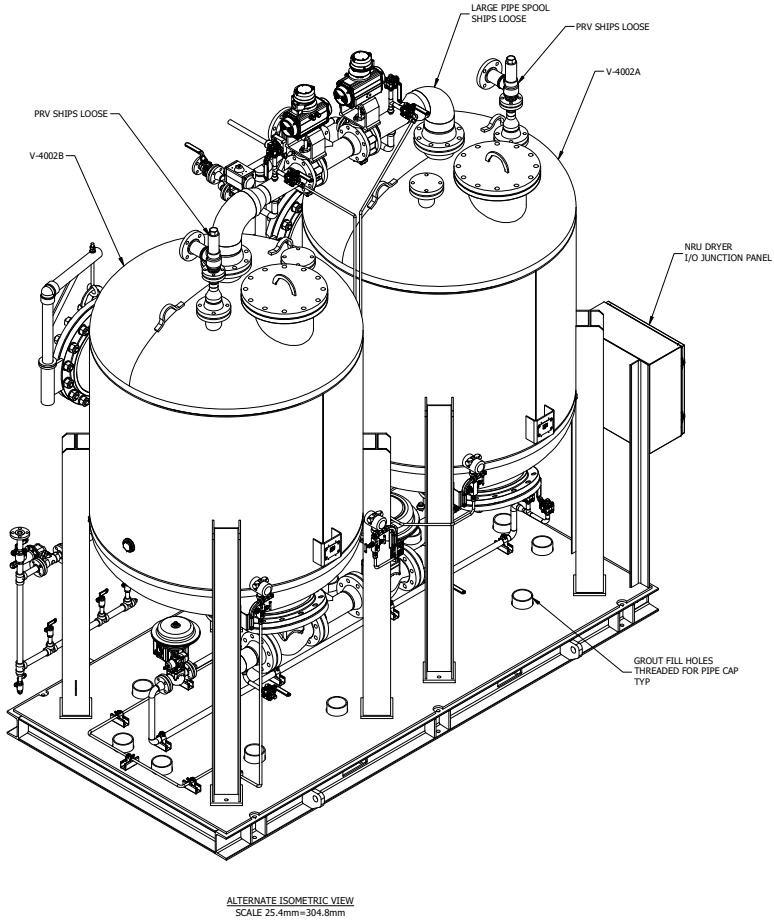
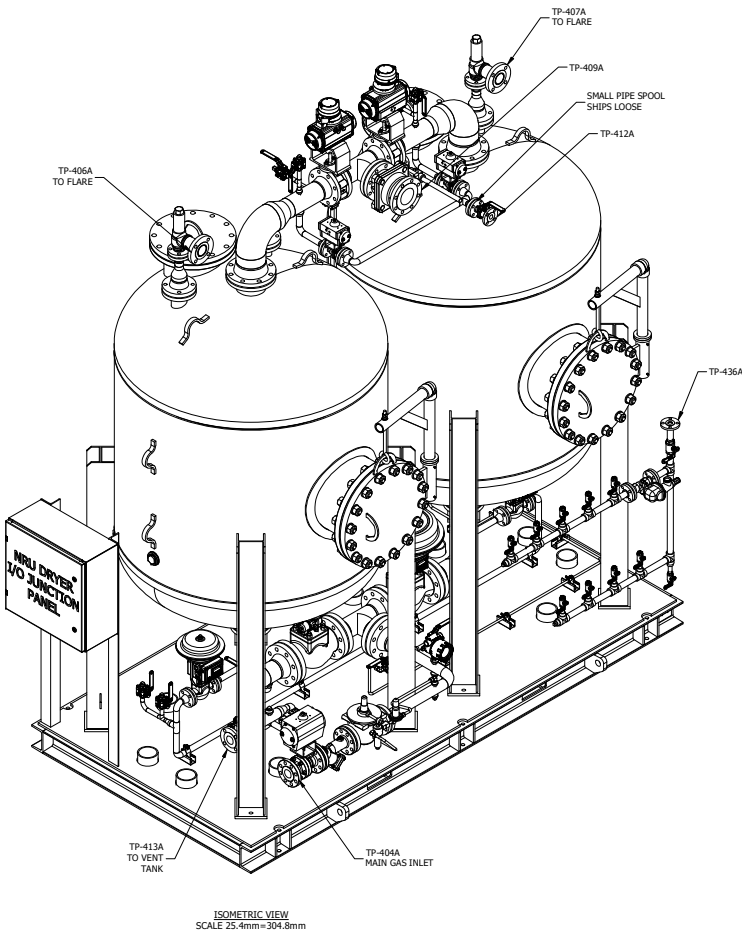
THIS DOCUMENT IS CONFIDENTIAL AND THE EXCLUSIVE PROPERTY OF GAS RNG. IT CANNOT BE USED, COPIED AND/OR COMMUNICATED TO THE THIRD PARTIES WITHOUT THE WRITTEN PERMISSION OF GAS RNG.

00	INITIAL ISSUED	AU	VM	PL	RF
REV	MODIFICATIONS / CHANGES	ENG	DRN	CHK	APP



DWG. NO:  
J009-GAS-510-4011

REV. PAGE  
00 3/4



NOTES:

- DIMENSIONS ARE mm [in]
- SKID SHIPPING WEIGHT(NO FIELD PIPING OR LOOSE SHIP ITEMS): 10,350 LBS
- INSTALLED DRY WEIGHT(INCLUDES FIELD PIPING AND LOOSE SHIP PARTS): 11,500 LBS
- OPERATING WEIGHT(INCLUDES MEDIA WEIGHT): 22,500 LBS

TABLE		
NOZZLE	SERVICE	SIZE/TYPE
TP 404A	GAS INLET (FROM V-4001)	2" CL300 RF ANSI FLANGE
TP 406A	SAFETY VALVE PRV-4002A OUTLET	2 1/2" CL150 RF ANSI FLANGE
TP 407A	SAFETY VALVE PRV-4002A OUTLET	2 1/2" CL150 RF ANSI FLANGE
TP 409A	DRY GAS OUTLET (TO NRU)	4" CL150 RF ANSI FLANGE
TP 412A	REGENERATING GAS INLET	1" CL150 RF ANSI FLANGE
TP 413A	WASTE GAS TO VENT VESSEL (V-4006)	2" CL150 RF ANSI FLANGE
TP 436A	INSTRUMENT AIR	1" CL150 RF ANSI FLANGE



TOLERANCES  
TOLERANCES UNLESS  
OTHERWISE NOTED:  
MACHINING: ±.010", ±0.25mm  
STRUCT.: ±1/16", ±1.60mm  
OTHERS: ±1/32", ±0.80mm  
NON-CUMULATIVE

TITLE:

GENERAL ARRANGEMENT DRAWING

NRU DRYER SKID

SCALE

-

PROJECT:

RUDARPA RNG PROJECT

NORTH COUNTY LANDFILL

BETHLEHEM, NEW HAMPSHIRE

THIS DOCUMENT IS CONFIDENTIAL AND THE EXCLUSIVE PROPERTY OF **GAS RNG**. IT CANNOT BE USED, COPIED AND/OR COMMUNICATED TO THE THIRD PARTIES WITHOUT THE WRITTEN PERMISSION OF **GAS RNG**.

00	INITIAL ISSUED	AU	VM	PL	RF
REV	MODIFICATIONS / CHANGES	ENG	DRN	CHK	APP
	DATE				



DWG. NO:

J009-GAS-510-4011

REV. PAGE

00 4/4