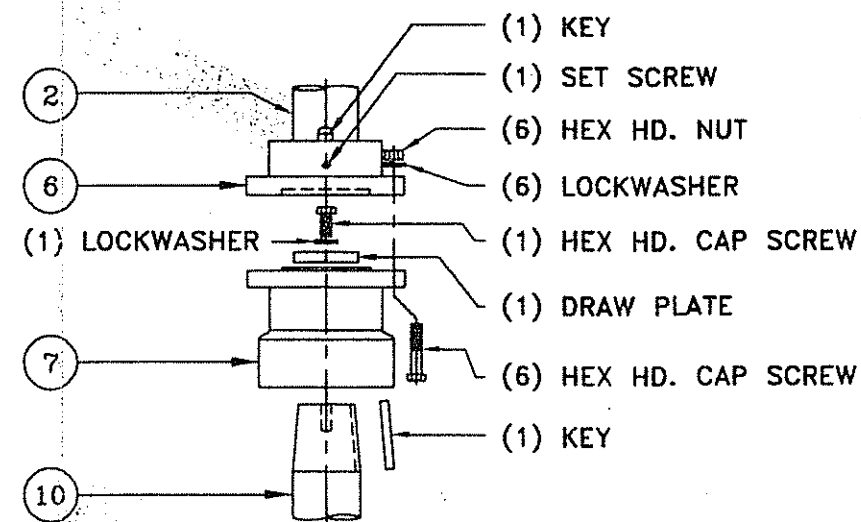
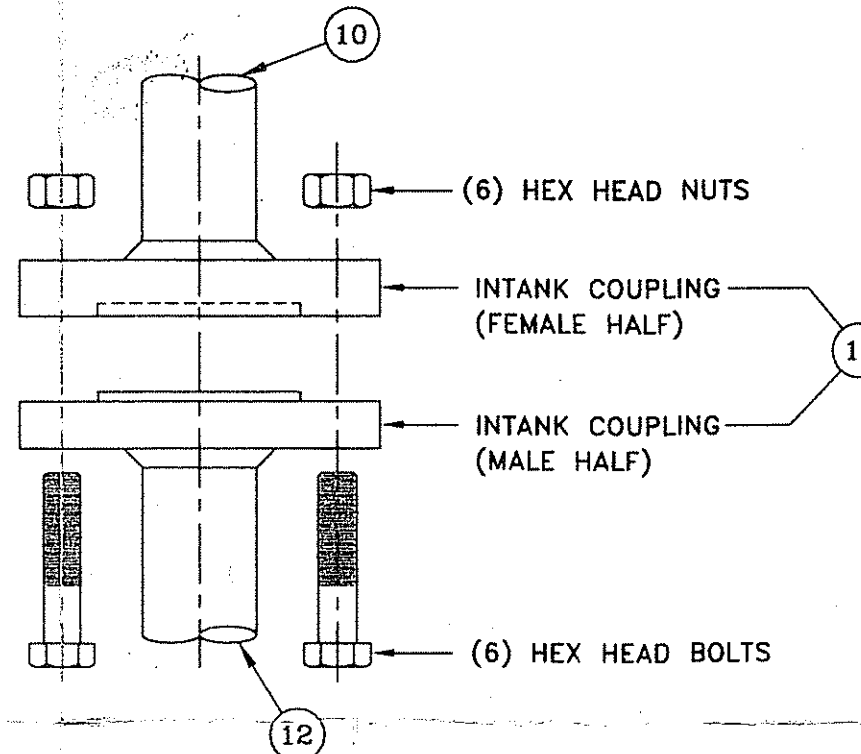


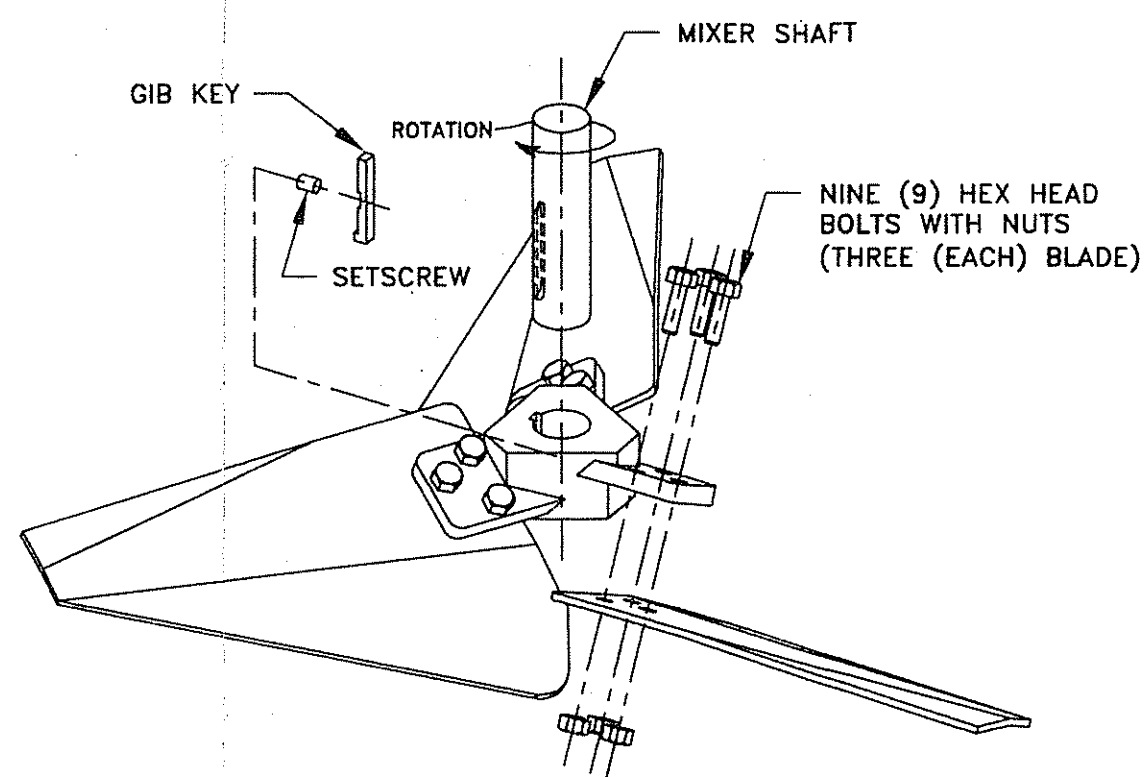
### LOW SPEED COUPLING ASSEMBLY



### INTANK COUPLING ASSEMBLY



### HI-FLOW IMPELLER ASSEMBLY



<b>CERTIFIED</b>	
FOR CONSTRUCTION	
FOR:	SOFIX CORPORATION
	CHATTANOOGA, TN
REF.:	Purchase Order No. P00-0269
	W.O.#: 14849
BY:	DATE: 6 JUN 00

### CERTIFIED OUTLINE & DIMENSION DRAWING

CUSTOMER: SOFIX CORPORATION  
 LOCATION: CHATTANOOGA, TN  
 PURCHASE ORDER No. P00-0269  
 TAG ITEM: C-4100  
 ProQuip WORK ORDER: 14849 SERIAL: 14849  
 QUANTITY: (1) WETTED PARTS MTL: 304L S.S. WEIGHT: 1,300 lbs.  
 LOAD DATA FOR MIXER SUPPORT DESIGN  
 VERTICAL DOWNWARD FORCE: 1,300 lbs.  
 DYNAMIC TORQUE: 16,000 lbs-in.  
 VARYING DYNAMIC OVERTURNING MOMENT 35,000 lbs-in.  
 MIXER SUPPORT DESIGN MUST CONSIDER BOTH MECHANICAL STRENGTH AND RIGIDITY. SUPPORT MUST BE STIFF ENOUGH TO AVOID PERCEPTABLE DRIVE MOVEMENT WHILE MIXER IS OPERATING. TANK, BAFFLES, AND SUPPORTS ARE NOT FURNISHED BY ProQuip.

MINIMUM TANK OPENING: (NOTE-1)		
ITEM	PART No.	ITEM DESCRIPTION
1		MOTOR - 7.5 HP; 1800 RPM; 230/460 V; 3 Ph; 60 Hz
2		FRAME: 213T TYPE: TEFC (NOTE-2)
3		REDUCER: ZG-30
4		BASE: 10"-150 LB. (RF) ANSI FLANGE (NOTE-3)
5		HIGH SPEED COUPLING
6		HIGH SPEED COUPLING GUARD
7		LOW SPEED COUPLING: 7 DIA.
8		REMOVABLE COUPLING: 7 DIA.
9		MECHANICAL SEAL: FLOWERVE, SPLIT MSS
10		DUST SHIELD AND VAPOR SEAL
11		SEAL SHAFT: 3 DIA.
12		INTANK COUPLING: 7.5 DIA.
13		MIXER SHAFT: 3 DIA.
14		IMPELLER: 53 DIA., HI-FLOW, (3) BLADE
15		IMPELLER: 18 DIA., CHEVRON, (2) BLADE

### GENERAL NOTES:

- MINIMUM TANK OPENING: 20 DIA. TO ALLOW PASSAGE OF THE LARGEST WELDED PART INTO THE VESSEL.
- MOTOR TYPE IS ENRGY EFFICIENT AND INVERTER DUTY (SUITABLE FOR 2: 1 CONSTANT TORQUE AND 10:1 VARIABLE TORQUE).
- MOUNTING FLANGE DETAILS:  
 ANSI SIZE: 10"-150 LB.  
 OUTSIDE DIAMETER: 16  
 BOLT CIRCLE: 14.25  
 No. OF HOLES: 12  
 BOLT HOLE DIA.: 1  
 MOUNTING FLANGE HOLES STRADDLE MIXER CENTERLINES.  
 MOUNTING FLANGE FASTENERS & GASKET SUPPLIED BY OTHERS.
- ITEMS No. 1 THRU 11 (FEMALE HALF) WILL BE AS ONE (1) COMPLETE ASSEMBLY. ITEMS No. 13 ARE FIVE (5) PIECE, BOLTED CONSTRUCTIONS ATTACHING TO THE SHAFT WITH A GIB KEY AND SETSCREW. ITEM No. 14 IS A ONE-PIECE, ALL-WELDED CONSTRUCTION ATTACHING TO THE SHAFT WITH (2) SETSCREWS.
- ALL DIMENSIONS ARE IN INCHES.
- THE MIXER SHAFT IS TURNED DOWN IN TWO DIFFERENT PLACES. THE FIRST TRANSITION IS FROM A DIA. OF 3 TO A DIA. OF 2.5. THE SECOND TRANSITION IS FROM A DIA. OF 2.5 TO 1.5

1	D.P.SCHAAR	6 JUN 00	REVISED DRAWING PER CUSTOMER RETURNED APPROVALS
CHG	REV. BY	DATE	DESCRIPTION OF CHANGE
NO.	CHK'D BY		
ProQuip, Inc.		850 E. Highland Rd. Macedonia, Ohio 44056 (330) 468-1850	
SCALE NTS		By David P. Schaar	
DATE 25 APR 00		CHK'D.	
		APP'D.	
7ZGU30B AGITATOR AND GENERAL TANK ARRANGEMENT TAG ITEM: C-4100			
THIS DRAWING AND THE INFORMATION IT CONTAINS IS THE PROPERTY OF ProQuip, Inc. AND MAY NOT BE COPIED OR USED DIRECTLY OR INDIRECTLY FOR ANY PURPOSE OTHER THAN THAT AUTHORIZED IN WRITING BY ProQuip, Inc.		DRAWING NUMBER	REV.
		2C975800	1

114389 AGITATOR