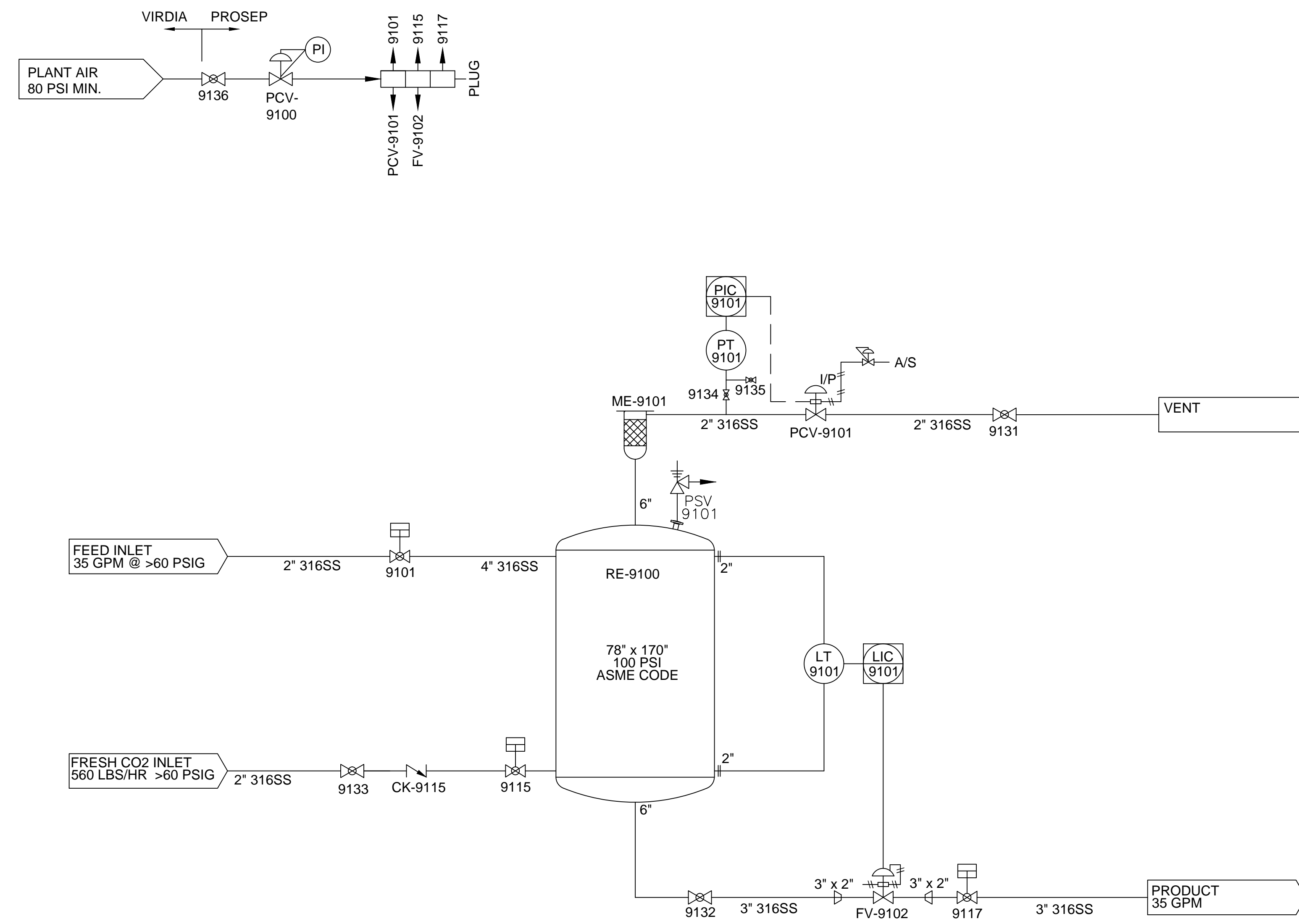


- NOTES:
- SEE DRAWING 15-V-1380-1 FOR PROCESS FLOW DIAGRAM.
 - SEE DRAWING 15-V-1380-2 FOR EQUIPMENT LAYOUT.
 - SEE DRAWING 15-V-1380-3 COMPONENT LIST FOR DESCRIPTION OF COMPONENTS.
 - SCH 10 316L SS PIPING WITH B.W. FITTINGS TYPE "A" STUB ENDS AND 150# ANSI GALV. C.S. LAP JOINT FLANGES.
 - GASKETS ARE 1/8" THK. EPDM FULL FACE AND RING TYPE
 - STUD/BOLT: CARBON STEEL; ASTM A-307 GRADE B, HEAVY HEX HEAD, ZINC PLATED, STUDS SHALL BE TH'D FULL LENGTH, NUT: CARBON STEEL; ASTM A-563 GRADE A HEAVY HEX, ZINC PLATED. SAE CARBON STEEL; FLAT WASHERS AND INTERNAL STAR LOCK WASHER, ZINC PLATED.
 - PIPING TO CONFORM TO ASME B-31.1.
 - AIR SUPPLY TUBING TO ACTUATORS TO BE 1/4" O.D. POLYETHYLENE WITH BRASS FITTINGS.



This document contains confidential information that is the property of ProSep Ltd. It is subject to return on demand. Do not copy, reproduce, store, or transmit in any form (electronic, mechanical, photocopy, or otherwise) any information on this document without written consent from ProSep Ltd.

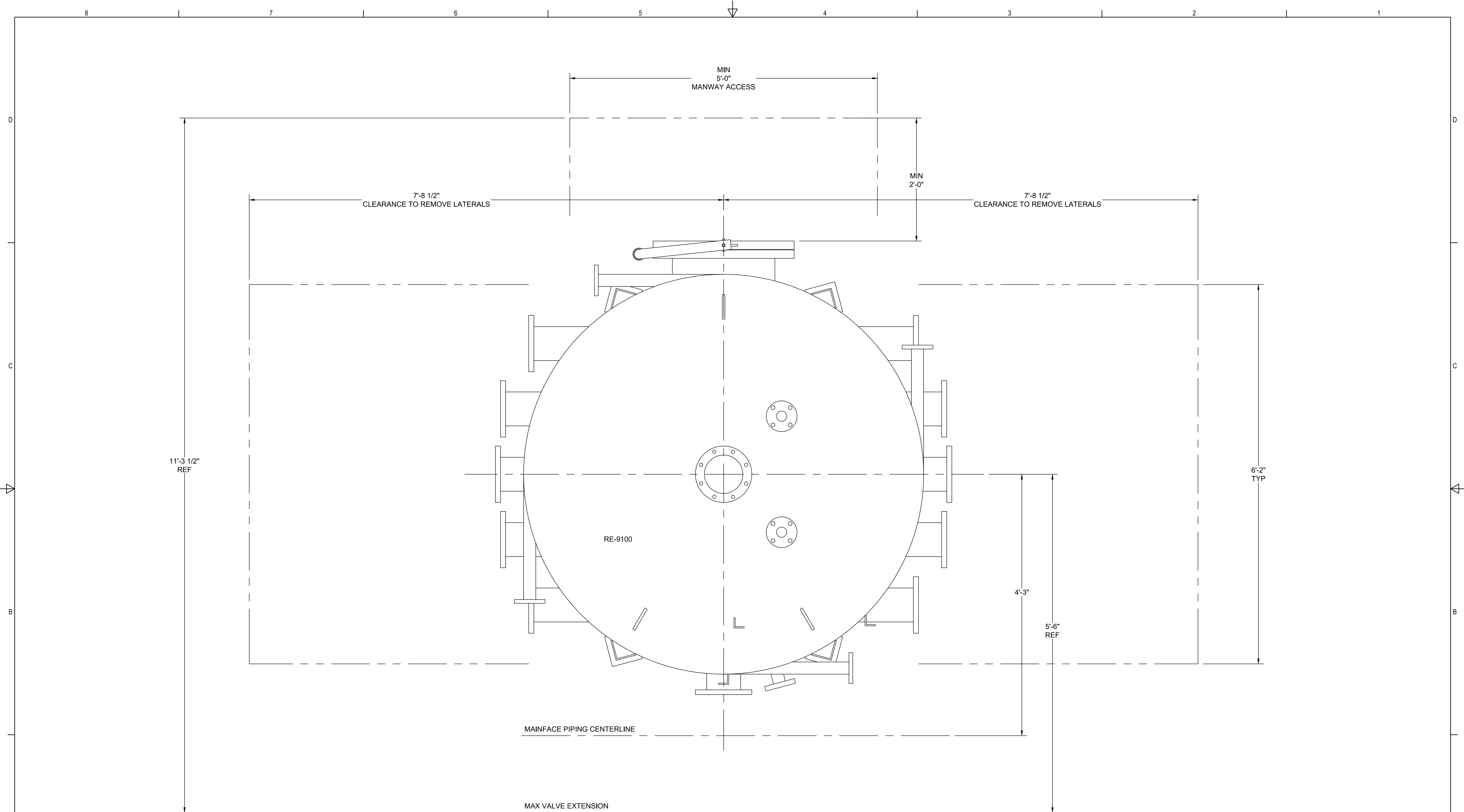
PROSEP LTD LIQUID SEPARATION SPECIALISTS
 ProSep Ltd.
 9251 N. 2nd Street
 Roscoe, Illinois 61073 USA
 815-623-7630
 www.prosep-ltd.com

DRAWN BY: JR
 DATE: 9/16/15
 CHECKED BY:
 DATE:

PROJECT NUMBER
 15-V-1380
 CUSTOMER P.O. NUMBER:

TITLE: 78" DIA. CARBONATOR
 CUSTOMER: VIRDIA
 RACELAND, LA

SCALE: NONE
 REVISION:
 15-V-1380-1
 SHEET 1 OF 1



78" O.D. x 170" SIDE SHEET
 304 SS CONSTRUCTION
 CARBONATOR SYSTEM

| | | | | |
|--|--|---------------------------------|---|--|
| <small>This document contains confidential information that is the property of ProSep Ltd. It is subject to return on demand. Do not copy, reproduce, store, or transmit in any form (electronic, mechanical, photocopy, or otherwise) any information on this document without written consent from ProSep Ltd.</small> | PROSEP LTD <small>LIQUID SEPARATION SPECIALISTS</small> ProSep Ltd. 9251 N. 2nd Street Roscoe, Illinois 61073 USA 815-623-7630 www.prosep-ltd.com | DRAWN BY: CEH DATE: 10-7-15 | PROJECT NUMBER: 15-V-1380 | TITLE: CARBONATOR SYSTEM LAYOUT DRAWING SCALE: 1"=1'-0" |
| | | CHECKED BY: LB DATE: 10-8-15 | CUSTOMER P.O. NUMBER: VIRDIA RACELAND, LA | REVISION: 15-V-1380-2 SHEET 1 OF 1 |