

## TEIKOKU CANNED MOTOR PUMP DATA SHEET

Messrs : Evonik Degussa Corporation

No. QFH-1373A

2015/8/21

Order No. : ☒ ※1  
 Job No. : ---  
 Project Name : ---  
 Item No. : ☒ ※1  
 Item Name : ---  
 Model : ☒ DA61-2518J4BL-0810T1V-A

**CERTIFIED**  
 Drawing conforms to the  
 customer's latest specifications

Qty : ☒ 2

Sign For Receipt  
 (For customer)

TEIKOKU ELECTRIC MFG. CO., LTD.

Approved by	Checked by	Designed by
R. Takeuchi	R. Matsumura	M. Morii

Operating Conditions		Materials																																											
Total Head (m) : 34.3	Capacity (L/min) : 1503	Casing : SCS14(CF-8M 316 SS)																																											
	(m3/h) : 90.2	Impeller : SCS14(CF-8M 316 SS)																																											
Suction Press. (barA) : 1.33	Discharge Press. (barA) : ---	Adapter : SCS14(CF-8M 316 SS)																																											
NPSHava. (m) : 12.35	NPSHreq. (m) : 6	RBH : SUS316(316 SS)																																											
Liquid : AcCH		Motor Flange : SUS316L(316L SS)																																											
Temperature (Des./Nor.) (°C) : -2	/ ---	Stator Can : ALLOY C-276																																											
Specific gravity (Des./Nor.) : 1.02	/ ---	Shaft : SUS316(316 SS)																																											
Viscosity (Des./Nor.) (mPa·s) : 6.11	/ ---	Rotor Can : SUS316L(316L SS)																																											
Mechanical Design Temperature (°C) : ---		Bearing : Carbon Graphite																																											
Specific Heat (kJ/(kg·K)) : ---	Melting Temp. (°C) : ---	Shaft Sleeve : ---																																											
Vapor Press. (BarA) : 0.032		+ Thrust Collar : SUS316+Stellite(316 SS+Stellite)																																											
Solids Name : ---		Pump Gasket : <input checked="" type="checkbox"/> SUS316(316 SS)+Grafoil																																											
Concentration (wt%) : ---	Particle Size (μm) : ---	Motor Gasket : <input checked="" type="checkbox"/> SUS316(316 SS)+Grafoil																																											
Flushing or Barrier Fluid : ACA		O-ring : PTFE																																											
Liquid/S.Gr. (cP) : 1	/ 0.5	Mechanical Seal : SiC+Carbon																																											
Press. (MPaG) : S.P. + 0.3 ± 0.05	Flow (m3/h) : ---																																												
Pump Design & Construction		Performance																																											
Design Press <input checked="" type="checkbox"/> (bar) : <input checked="" type="checkbox"/> 10.34	Temp. (°C) : -2	Impeller Type : CLOSE																																											
Code Applied : None	Nameplate : English	No. of Stage : 1																																											
<table border="1"> <thead> <tr> <th colspan="2">Nozzle Connection : ASME</th> <th colspan="3">Finish : SMOOTH FINISH</th> </tr> <tr> <th>Nozzle</th> <th>Rating</th> <th>Size</th> <th>Facing</th> <th>Position</th> </tr> </thead> <tbody> <tr> <td>Suction</td> <td>150LB</td> <td>4"</td> <td>RF</td> <td>END</td> </tr> <tr> <td>Discharge</td> <td>150LB</td> <td>3"</td> <td>RF</td> <td>TOP</td> </tr> <tr> <td>Drain</td> <td>150LB</td> <td>1/2"</td> <td>RF</td> <td>BOTTOM</td> </tr> <tr> <td>Reverse</td> <td>---</td> <td>---</td> <td>---</td> <td>---</td> </tr> </tbody> </table>		Nozzle Connection : ASME		Finish : SMOOTH FINISH			Nozzle	Rating	Size	Facing	Position	Suction	150LB	4"	RF	END	Discharge	150LB	3"	RF	TOP	Drain	150LB	1/2"	RF	BOTTOM	Reverse	---	---	---	---	<table border="1"> <thead> <tr> <th colspan="2">Jacket Design Press. (psi) : 125</th> </tr> <tr> <th>Utilities Required</th> <th>Media</th> </tr> </thead> <tbody> <tr> <td>Casing</td> <td>NONE</td> </tr> <tr> <td>Motor</td> <td>COOLING</td> </tr> <tr> <td>Heat Ex./Ext. Circ.</td> <td>Brine</td> </tr> <tr> <td>Motor(Stop)</td> <td>-15 °C</td> </tr> </tbody> </table>		Jacket Design Press. (psi) : 125		Utilities Required	Media	Casing	NONE	Motor	COOLING	Heat Ex./Ext. Circ.	Brine	Motor(Stop)	-15 °C
Nozzle Connection : ASME		Finish : SMOOTH FINISH																																											
Nozzle	Rating	Size	Facing	Position																																									
Suction	150LB	4"	RF	END																																									
Discharge	150LB	3"	RF	TOP																																									
Drain	150LB	1/2"	RF	BOTTOM																																									
Reverse	---	---	---	---																																									
Jacket Design Press. (psi) : 125																																													
Utilities Required	Media																																												
Casing	NONE																																												
Motor	COOLING																																												
Heat Ex./Ext. Circ.	Brine																																												
Motor(Stop)	-15 °C																																												
<table border="1"> <thead> <tr> <th>Flow(Min.)</th> <th>Connection</th> </tr> </thead> <tbody> <tr> <td>0.72 m3/h</td> <td>NPT 1/2</td> </tr> </tbody> </table>		Flow(Min.)	Connection	0.72 m3/h	NPT 1/2	<table border="1"> <thead> <tr> <th colspan="2">Spare Parts</th> </tr> </thead> <tbody> <tr> <td>Min. Flow (L/min) : ---</td> <td></td> </tr> <tr> <td>Min. Flow (m3/h) : ---</td> <td></td> </tr> </tbody> </table>		Spare Parts		Min. Flow (L/min) : ---		Min. Flow (m3/h) : ---																																	
Flow(Min.)	Connection																																												
0.72 m3/h	NPT 1/2																																												
Spare Parts																																													
Min. Flow (L/min) : ---																																													
Min. Flow (m3/h) : ---																																													
<table border="1"> <thead> <tr> <th colspan="2">Customer</th> </tr> </thead> <tbody> <tr> <td>PO#</td> <td>Evonik Corporation</td> </tr> <tr> <td>Project</td> <td>4701013179/4701319034</td> </tr> <tr> <td>Project#</td> <td>ACA G600</td> </tr> <tr> <td>Evonik's Pump#</td> <td>4142. 00940</td> </tr> <tr> <td>Requisition#</td> <td>P-1020/P-1020S</td> </tr> <tr> <td></td> <td>C0078-010</td> </tr> </tbody> </table>		Customer		PO#	Evonik Corporation	Project	4701013179/4701319034	Project#	ACA G600	Evonik's Pump#	4142. 00940	Requisition#	P-1020/P-1020S		C0078-010	<table border="1"> <thead> <tr> <th colspan="2">Accessories</th> </tr> </thead> <tbody> <tr> <td>Vendor Drawings and Data</td> <td></td> </tr> </tbody> </table>		Accessories		Vendor Drawings and Data																									
Customer																																													
PO#	Evonik Corporation																																												
Project	4701013179/4701319034																																												
Project#	ACA G600																																												
Evonik's Pump#	4142. 00940																																												
Requisition#	P-1020/P-1020S																																												
	C0078-010																																												
Accessories																																													
Vendor Drawings and Data																																													
<table border="1"> <thead> <tr> <th colspan="2">Power Supply &amp; Drive Motor</th> </tr> </thead> <tbody> <tr> <td>Frame No. : 518</td> <td>Duty : Cont</td> </tr> <tr> <td>Voltage(V) : 460</td> <td>Frequency(Hz) : 60</td> </tr> <tr> <td>Output(kW/hp) : 29/38.89</td> <td>Rated Amp. (A) : 55</td> </tr> <tr> <td>Thermal Class : 220</td> <td>Start Method : DIRECT</td> </tr> <tr> <td>R.P.M. (rpm) : 3600</td> <td>Direction : C.C.W. (Viewed from Pump Suction)</td> </tr> <tr> <td>Voltage for protection(V) : 120</td> <td>Protection Device : Thermostat b</td> </tr> <tr> <td>Dry Run Protection Relay : ---</td> <td></td> </tr> <tr> <td>Terminal Box : Stud/Thread/ 1</td> <td></td> </tr> <tr> <td>Power Cable Conduit : NPT2</td> <td>Cable O.D. (Main) (mm) : ---</td> </tr> <tr> <td>Instrument Cable Conduit : NPT3/4</td> <td>Cable O.D. (Sub) (mm) : ---</td> </tr> <tr> <td>ATEX Marking : ---</td> <td></td> </tr> </tbody> </table>		Power Supply & Drive Motor		Frame No. : 518	Duty : Cont	Voltage(V) : 460	Frequency(Hz) : 60	Output(kW/hp) : 29/38.89	Rated Amp. (A) : 55	Thermal Class : 220	Start Method : DIRECT	R.P.M. (rpm) : 3600	Direction : C.C.W. (Viewed from Pump Suction)	Voltage for protection(V) : 120	Protection Device : Thermostat b	Dry Run Protection Relay : ---		Terminal Box : Stud/Thread/ 1		Power Cable Conduit : NPT2	Cable O.D. (Main) (mm) : ---	Instrument Cable Conduit : NPT3/4	Cable O.D. (Sub) (mm) : ---	ATEX Marking : ---		<table border="1"> <thead> <tr> <th colspan="2">Other</th> </tr> </thead> <tbody> <tr> <td>Special Treatment : None</td> <td></td> </tr> <tr> <td>Painting Color : LightGray</td> <td></td> </tr> <tr> <td>Rotating Direction : ---</td> <td></td> </tr> <tr> <td>Monitoring : None</td> <td></td> </tr> <tr> <td>Bearing Wear Monitor : Radial / Local</td> <td></td> </tr> </tbody> </table>		Other		Special Treatment : None		Painting Color : LightGray		Rotating Direction : ---		Monitoring : None		Bearing Wear Monitor : Radial / Local							
Power Supply & Drive Motor																																													
Frame No. : 518	Duty : Cont																																												
Voltage(V) : 460	Frequency(Hz) : 60																																												
Output(kW/hp) : 29/38.89	Rated Amp. (A) : 55																																												
Thermal Class : 220	Start Method : DIRECT																																												
R.P.M. (rpm) : 3600	Direction : C.C.W. (Viewed from Pump Suction)																																												
Voltage for protection(V) : 120	Protection Device : Thermostat b																																												
Dry Run Protection Relay : ---																																													
Terminal Box : Stud/Thread/ 1																																													
Power Cable Conduit : NPT2	Cable O.D. (Main) (mm) : ---																																												
Instrument Cable Conduit : NPT3/4	Cable O.D. (Sub) (mm) : ---																																												
ATEX Marking : ---																																													
Other																																													
Special Treatment : None																																													
Painting Color : LightGray																																													
Rotating Direction : ---																																													
Monitoring : None																																													
Bearing Wear Monitor : Radial / Local																																													

## Remarks :

- T-USA#385330
- Hazardous Area Classification: Class.1, Div.2, Gr.C&D T2
- ☒ •Mechanical Design Temperature: 170°C (Pumps do not run at this temperature. Pumps are not expected to function post experience of this temperature.)
- ☒ •※1 Item No. P-1020 / Order No. 4701013179, Item No. P-1020S / Order No. 4701319034

REVIEWS

- B: Added 1 Point. (Aug. 27' 15) M. Morii
- C: Revised 12 points. Added 2 points. Deleted 1 point. (2016. 3. 14) M. Morii
- D: Deleted 1 point. (Mar. 23' 16) M. Morii

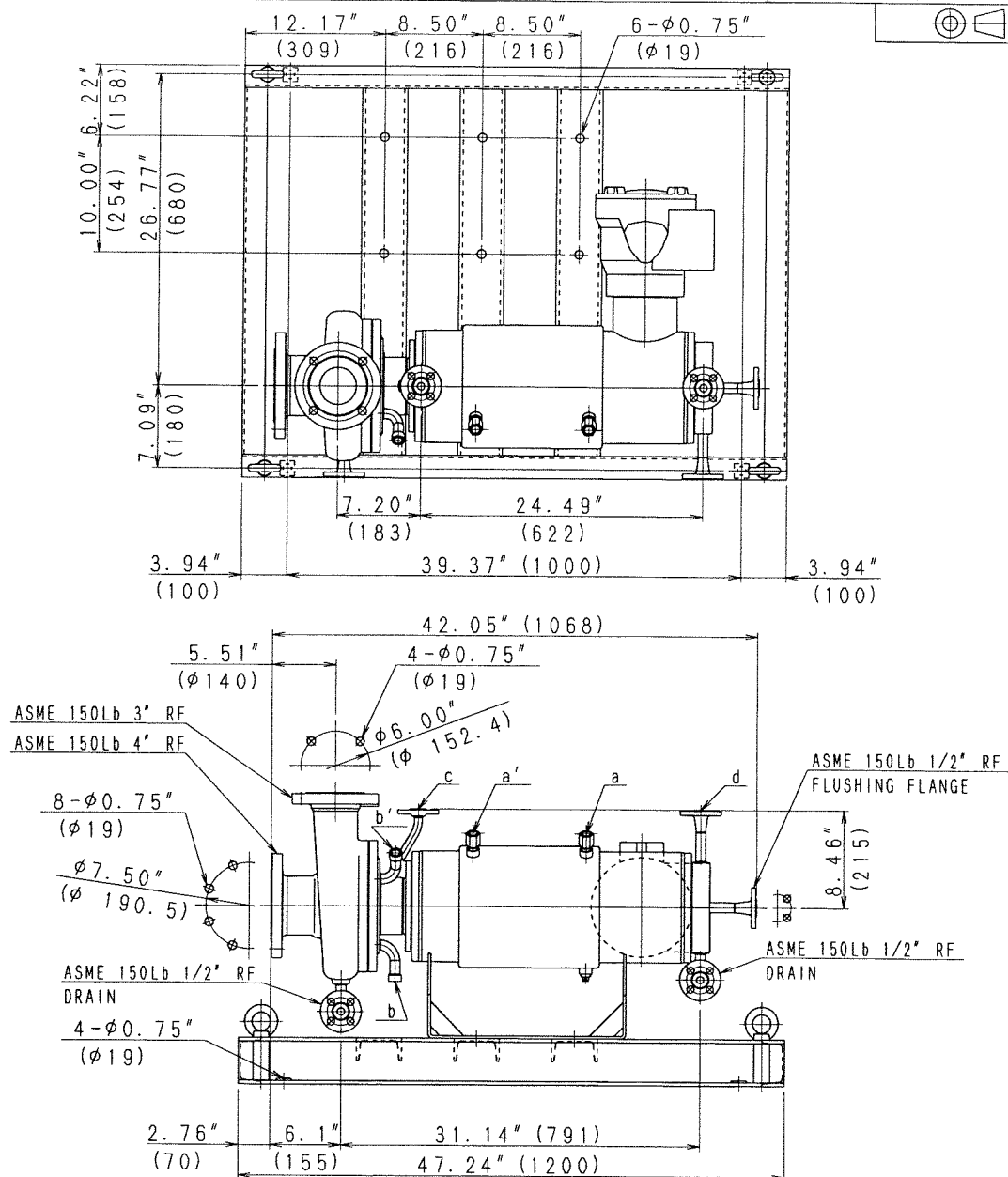
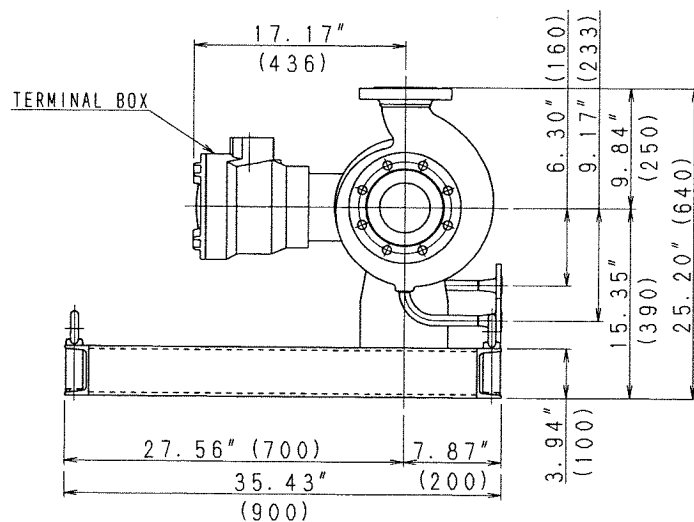
3E-7473

## NOZZLE

a, b... JACKET INLET... NPT1/2  
 a', b'... JACKET OUTLET... NPT1/2  
 c... CIR. LIQUID OUTLET... ASME 150Lb 1/2" RF  
 d... CIR. LIQUID INLET... ASME 150Lb 1/2" RF

Customer : Evonik Corporation  
 PO# : 4701013179/4701319034  
 Project : ACA G600  
 Project# : 4142. 00940  
 Evonik's Pump# : P-1020/P-1020S  
 Requisition# : C0078-010

**CERTIFIED**  
 Drawing conforms to the  
 customer's latest specifications



FH1373A

D WEIGHT : 360kg (794Lb)

REVISIONS  
 B  
 Revised  
 Mar. 25, '16  
 M. Morii

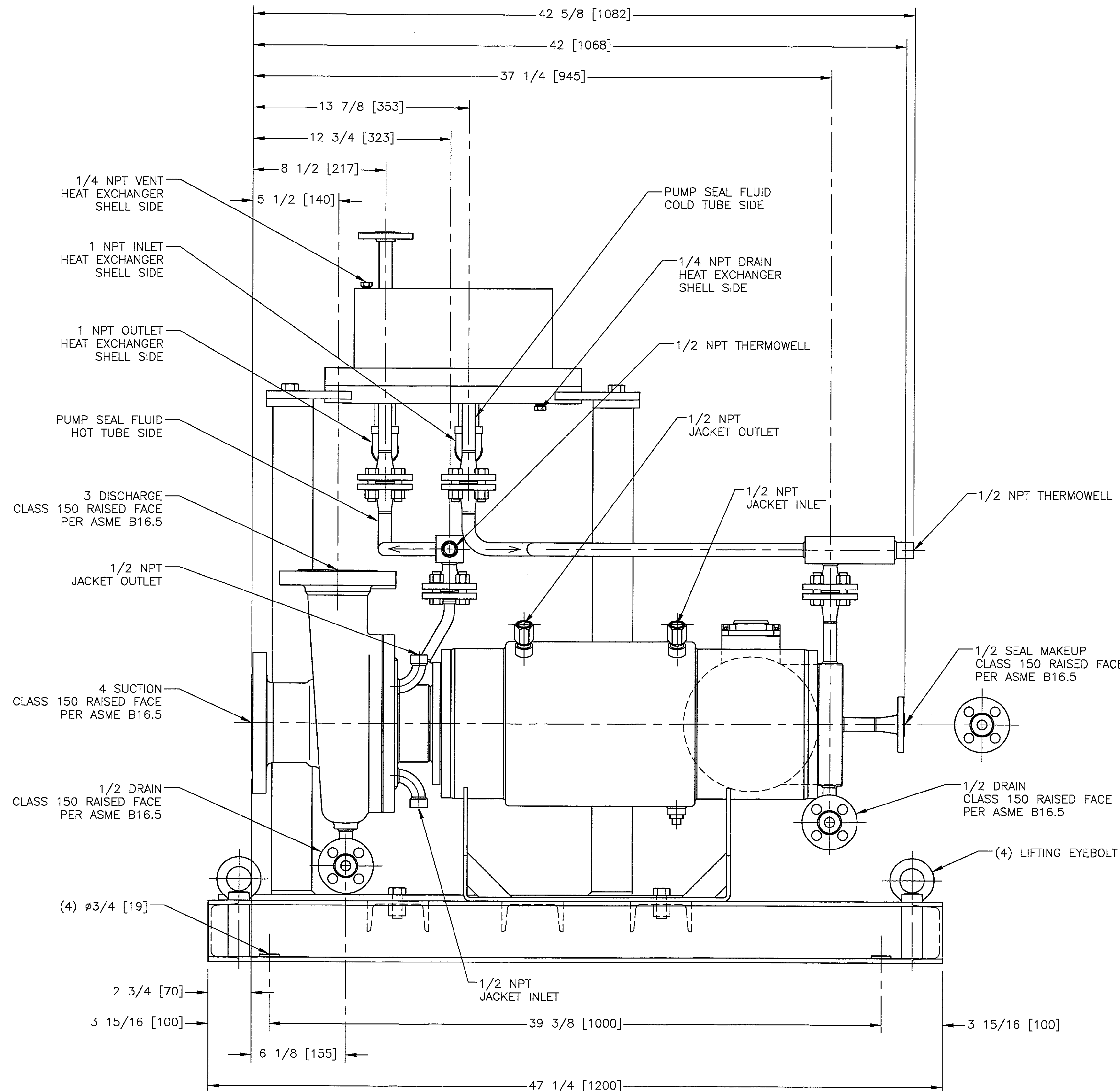
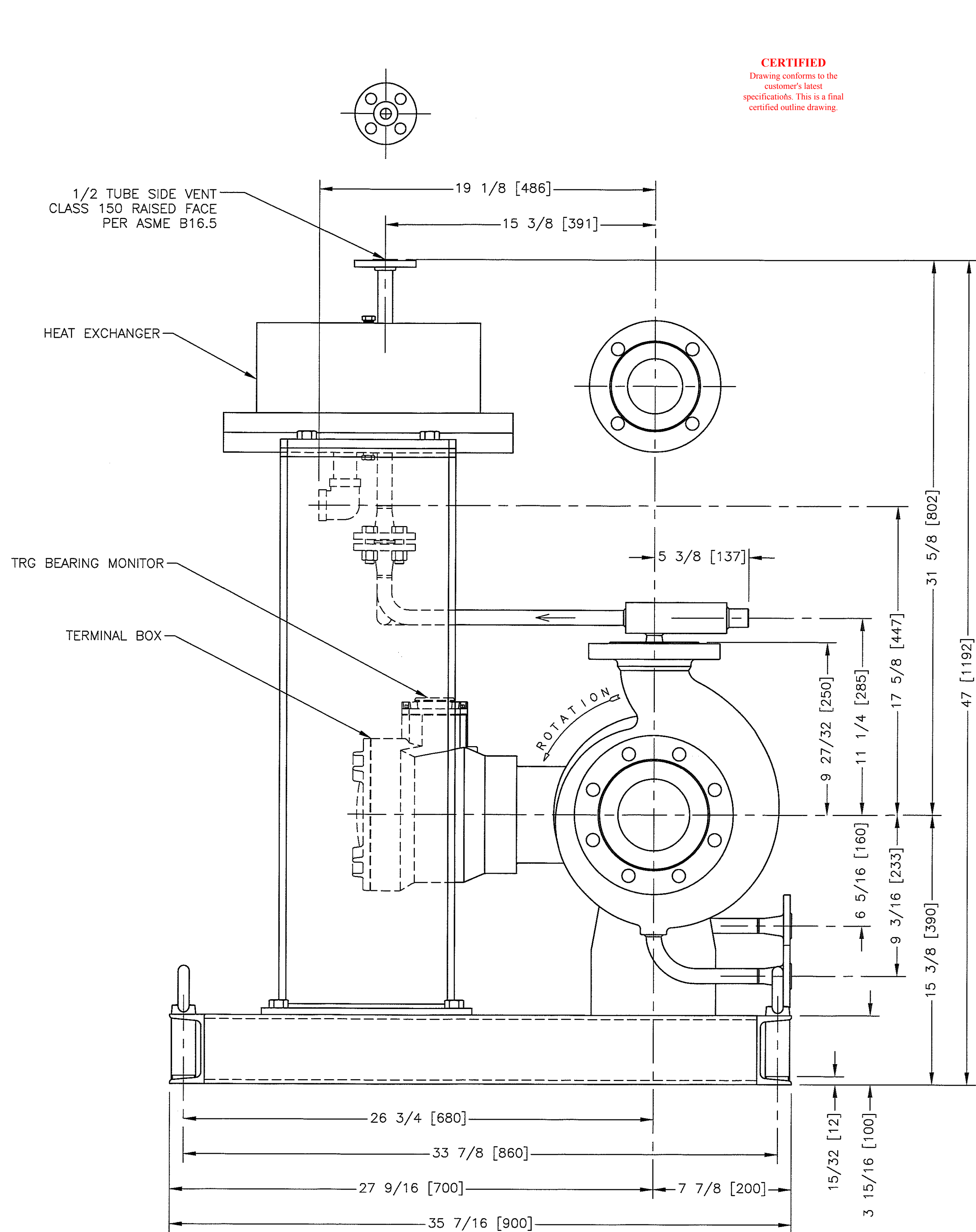
APPROVED	CHECKED	DRAWN	SCALE	DWG. TITLE
<i>R. Ta/unchi</i>	<i>P. Matsumura</i>	M. Morii Mar. 14, '16	FREE	外形図 DIMENSIONAL DRAWING
				TYPE: DA-518J-0810T1
				DWG. NO.
				3E-7473



株式会社 帝国電機製作所  
 TEIKOKU ELECTRIC MFG. CO., LTD.

B

**CERTIFIED**  
Drawing conforms to the  
customer's latest  
specifications. This is a final  
certified outline drawing.



CUSTOMER: EVONIK CORPORATION  
PO#: 4701013179 / 4701319034  
PROJECT: ACA G600  
PROJECT#: 4142.00940  
EVONIK'S PUMP#: P-1020/P-1020S  
REQUISITION#: C0078-010  
WEIGHT: 1120 LBS.  
PUMP AND HEAT EXCHANGER WILL HAVE 2" OF CELLULAR GLASS INSULATION.

**ORIGINAL**

**TEIKOKU USA INC**  
**CHEMPUMP**  
Containment, Reliability & Safety by Design

UNLESS OTHERWISE STATED:	DRAWN	DATE	TITLE
-ALL UNITS IN INCHES	E.W.M.	3/8/16	
-DIMS. IN BRACKETS ARE IN mm	CHECKED	DATE	
-DIMS. MARKED * ARE ±1/16 [±2]	CMH	3/11/16	
-ALL OTHER DIMS. ARE ±1/4 [±6]	APPROVED	DATE	
ANGLE DIMS. ARE ±5	CMH	3/11/16	
NOTES: ROUNDING TO NEAREST INCH/mm PRECLUDES INCH/mm CONVERSION	SCALE		
1	3/31/16	CHGD. H/E DIMS. & LOC., S.O.25379	ADD CUSTOMER COMMENTS
NO.	DATE & PRD. NO.	REVISIONS	BY
1	3/31/16	CHGD. H/E DIMS. & LOC., S.O.25379	ADD CUSTOMER COMMENTS
NO.	DATE & PRD. NO.	REVISIONS	BY

OUTLINE  
DA61-518-0810T

DRAWING NO.  
65859

REV.  
1

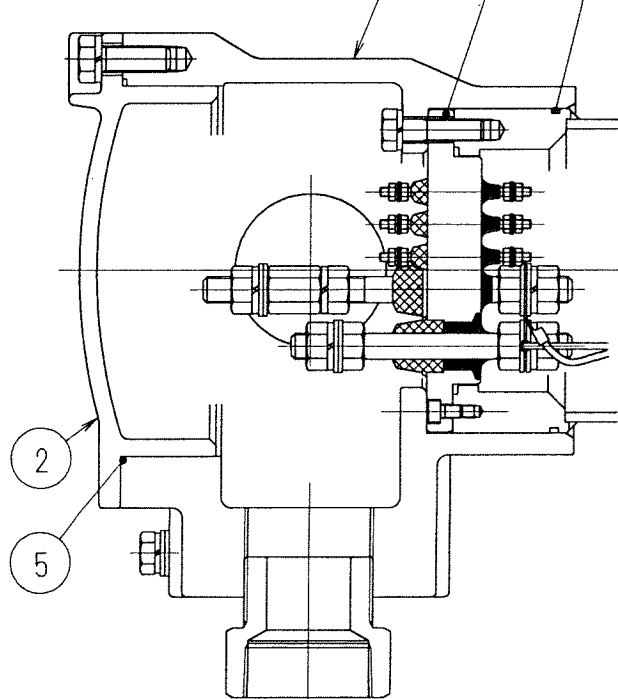
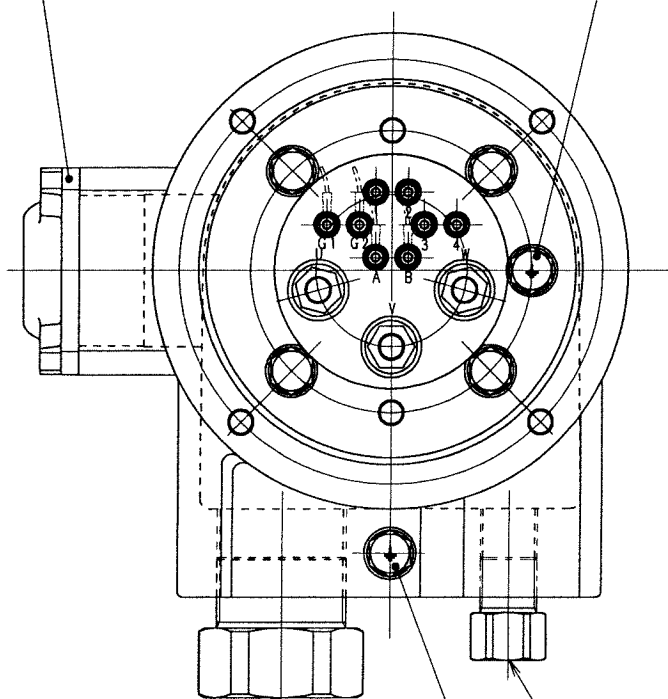
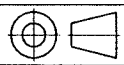
4N-9083-01

6

4

3

4



No.	名称
	NAME
1	端子箱 TERMINAL BOX
2	端子蓋 TERMINAL COVER
3	端子板 TERMINAL PLATE
4	アース端子 EARTH TERMINAL
5	Oリング O-RING
6	TRGメータ TRG METER

NPT 2  
SOURCE SIDENPT 3/4  
PROTECTION SIDE

端子記号 TERMINAL MARK

U, V, W . . . . . 電源 SOURCE (M12)

1, 2, 3, 4 . . . . . サーモスタット THERMOSTAT (M4)

G1, G2, A, B . . . TRGメータ TRG METER (M4)

FH1373A

REVISIONS

Customer :Evonik Corporation  
PO# :4701013179/4701319034  
Project :ACA G600  
Project# :4142.00940  
Evonik's Pump# :P-1020/P-1020S  
Requisition# :C0078-010

APPROVED

CHECKED

DRAWN

SCALE

DWG. TITLE

端子箱

R. Takeuchi

R. Matsumura

M. Morii

FREE

Aug-19/15

TERMINAL BOX

SIZE : L FMC II

DWG. NO.

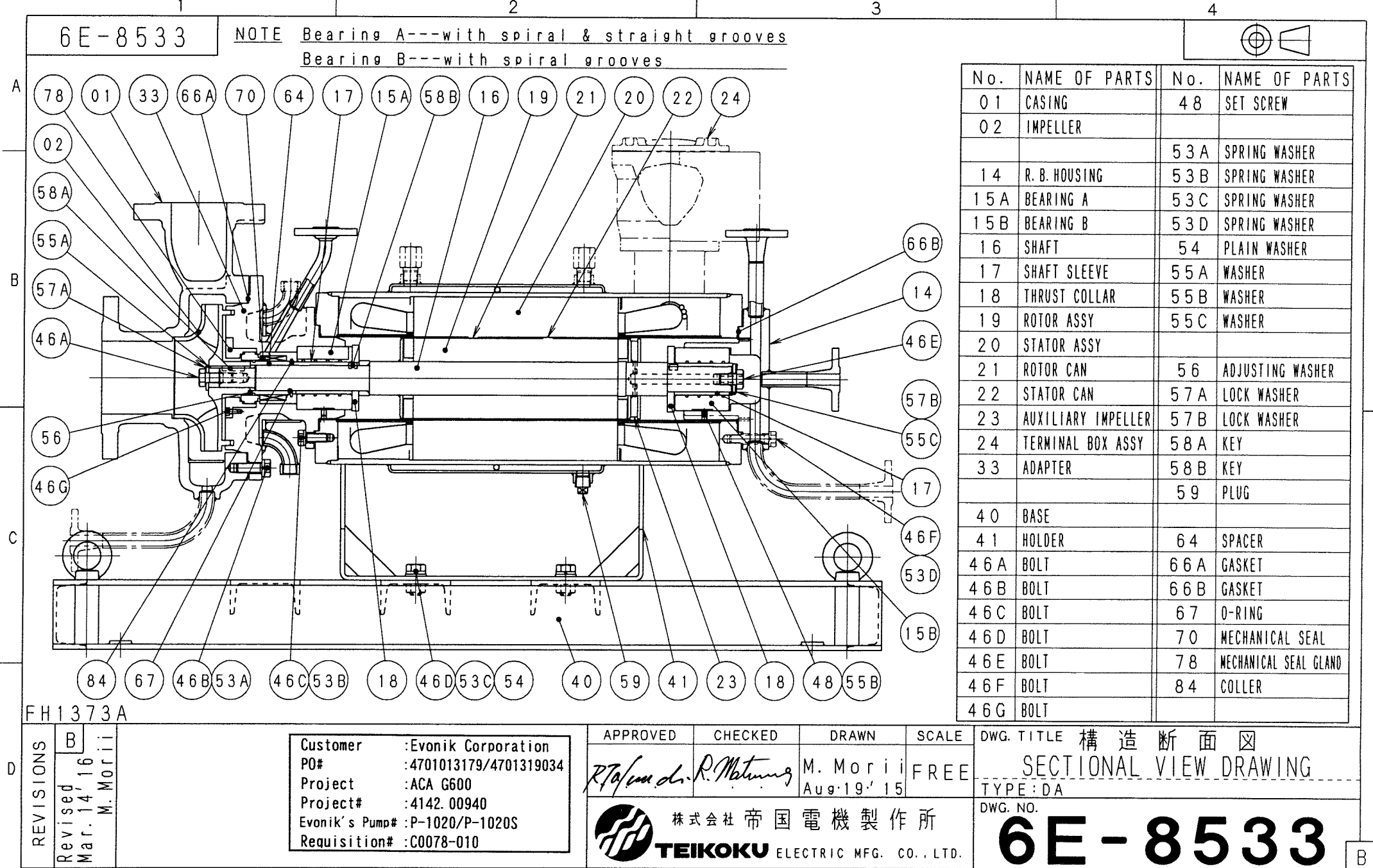


株式会社 帝国電機製作所

TEIKOKU ELECTRIC MFG. CO., LTD.

4N-9083-01





# MATERIAL LIST

(1/1)

NO.	NAME	MATERIAL (JIS Std./Eq. ASTM, AISI Std.)	REMARKS
01	CASING	SCS14 / CF-8M 316SS	
02	IMPELLER	SCS14 / CF-8M 316SS	
14	R. B. HOUSING	SUS316 / 316 SS	
15A	BEARING A	Carbon Graphite	
15B	BEARING B	Carbon Graphite	
16	SHAFT	SUS316 / 316 SS	
17	SHAFT SLEEVE	SUS316 / 316 SS + Stellite	
18	THRUST COLLAR	SUS316 / 316 SS + Stellite	
19	ROTOR ASS' Y	-----	
20	STATOR ASS' Y	-----	FRAME: SUS304 / 304 SS
21	ROTOR CAN	SUS316L / 316L SS	
22	STATOR CAN	ALLOY C-276	
23	AUXILIARY IMPELLER	SUS316L / 316L SS	
24	TERMINAL BOX ASS' Y	FC200 / Cl. No. 35 etc.	
33	ADAPTER	SCS14 / CF-8M 316SS	
40	BASE	SS400 / Carbon Steel	
41	HOLDER	SS400 / Carbon Steel	
46A	BOLT	SUS316 / 316 SS	
46B	BOLT	B SCM435 / AISI4137	
46C	BOLT	B SCM435 / AISI4137	
46D	BOLT	S20C / AISI 1020	
46E	BOLT	SUS316 / 316 SS	
46F	BOLT	B SCM435 / AISI4137	
46G	BOLT	SUS316 / 316 SS	
48	SET SCREW	SUS316 / 316 SS	
53A	SPRING WASHER	B SWRH / Carbon Steel	
53B	SPRING WASHER	B SWRH / Carbon Steel	
53C	SPRING WASHER	SWRH / Carbon Steel	
53D	SPRING WASHER	B SWRH / Carbon Steel	
54	PLAIN WASHER	SPCC / Carbon Steel	
55A	WASHER	SUS316L / 316L SS	
55B	WASHER	SUS316L / 316L SS	
55C	WASHER	SUS316L / 316L SS	
56	ADJUSTING WASHER	SUS316L / 316L SS	
57A	LOCK WASHER	SUS316L / 316L SS	
57B	LOCK WASHER	SUS316L / 316L SS	
58A	KEY	SUS316 / 316 SS	
58B	KEY	SUS316 / 316 SS	
59	PLUG	B SUS304 / 304 SS	
64	SPACER	SUS316 / 316 SS	
66A	GASKET	B SUS316 / 316 SS+Grafoil	
66B	GASKET	B SUS316 / 316 SS+Grafoil	
67	O-RING	PTFE	
70	MECHANICAL SEAL	SiC + Carbon	
78	GLAND	SUS316 / 316 SS	
84	COLLAR	SUS316 / 316 SS	
(DA)		APPROVED	CHECKED
B Revised 9 Points, Deleted 2 Points. (2016. 3. 14 M. Morii)		R. Takeuchi	R. Matsumura
			DRAWN
			M. Morii
			Aug. 20 '15
		Customer : Evonik Corporation	
		PO# : 4701013179/4701319034	
		Project : ACA G600	
		Project# : 4142. 00940	
		Evonik's Pump# : P-1020/P-1020S	
		Requisition# : C0078-010	
		<b>P-32842</b>	

FH1373A

TEIKOKU ELECTRIC MFG. CO., LTD.



# ESTIMATED PERFORMANCE CURVE

Date : Aug. 19. 2015  
No : E18H0037-00  
Dwg. No. : SFH-1373A

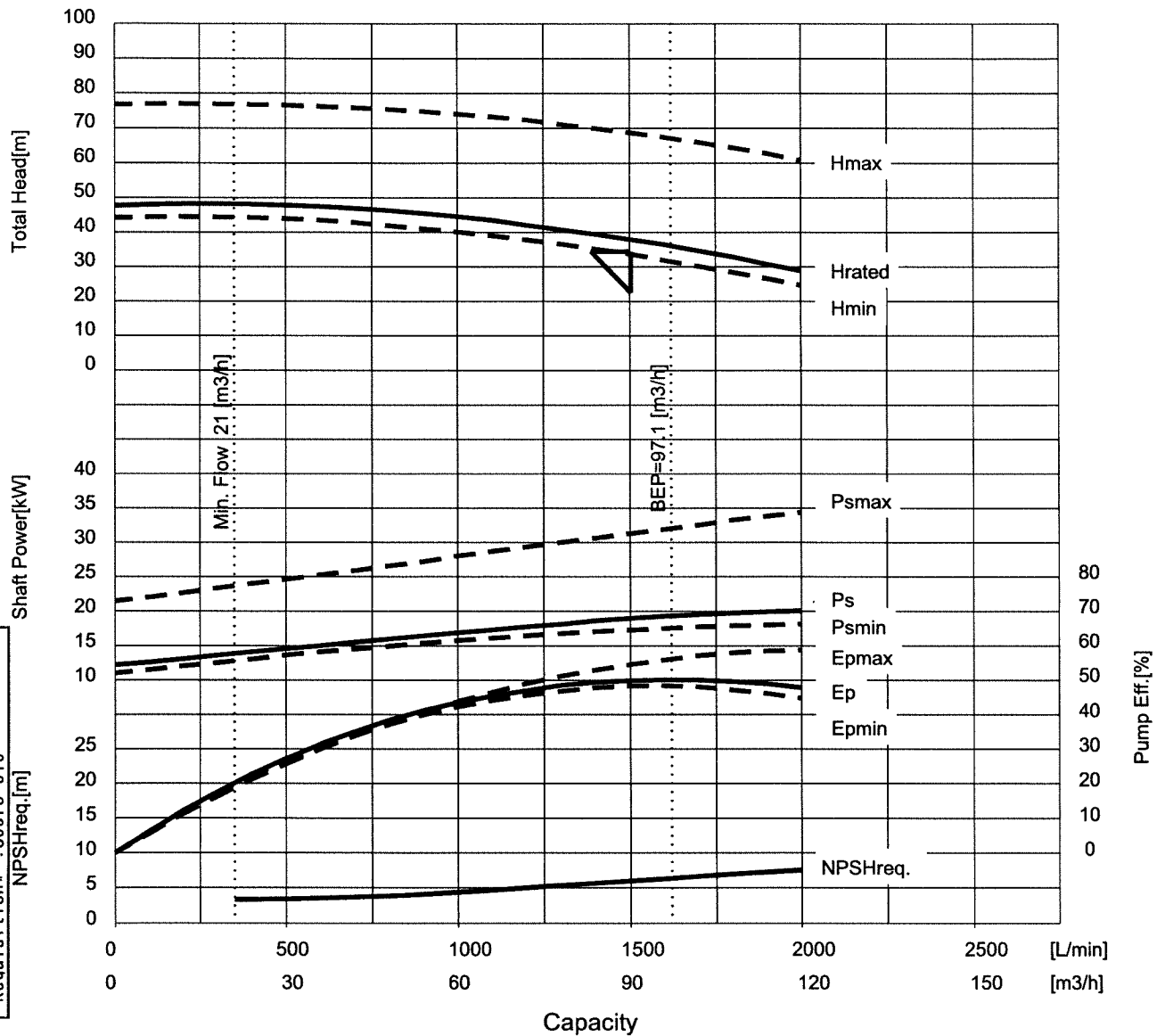
Item No. <sup>Ⓐ</sup> P-1020 / P-1020S

Item Name \*\*\*\*

Model <sup>Ⓑ</sup> DA61-2518J4BL-0810T1V-A

Frequency 60 Hz  
Voltage 460 V  
Phase 3  
Pole 2  
Output 29 kW  
Current 55 A

Total Head 34.3 m  
Capacity 1503 L/min 90.2 m<sup>3</sup>/h  
Min.Flow 350 L/min 21 m<sup>3</sup>/h  
Liquid AcCH  
Temp. -2 degC  
S.G. 1.02  
NPSHavail. 12.35 m  
Vis. 6.11 mPas  
NPSHreq. 6 m



Customer : Evonik Corporation  
PO# : 4701013179/4701319034  
Project : ACA G600  
Project# : 4142. 00940  
Evonik's Pump# : P-1020/P-1020S  
Requisition# : C0078-010

## Remarks :

- Shut-off head : 47.6m
- 37.9m, 49.9%, 19kW, 3495rpm @ rated flow
- 120m<sup>3</sup>/hr, 20.1kW @ EOC
- 34.39kW @ EOC (max. dia.)
- Ns : 29.08, SSS : 9210
- Impeller Dia(mm):208(Max)/172(Rated)/166(Min)
- Output:38.89(hp)

REV.	Date	Description
B	2016.3.14	Revised 2 Points. M.Morii

APPROVED BY	CHECKED BY	DRAWN BY
R.Takeuchi	R.Matsumura	M.Morii

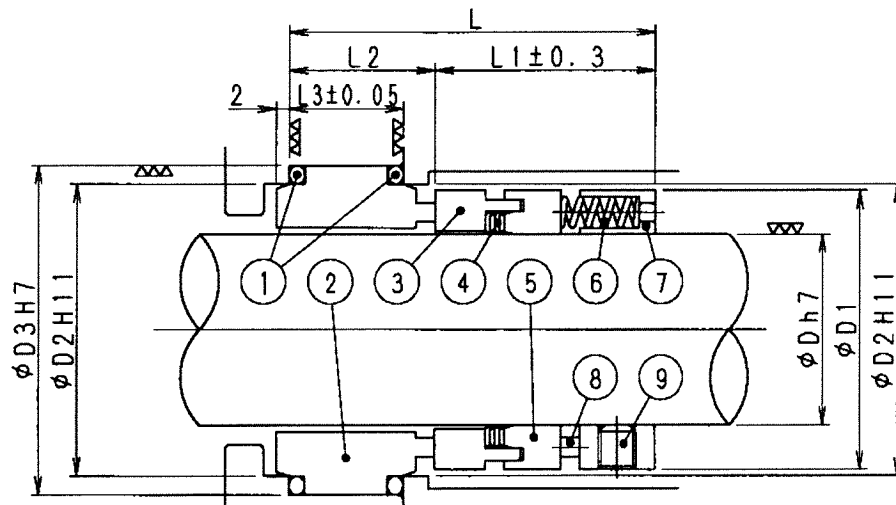
TEIKOKU ELECTRIC MFG. CO., LTD.

UNIS Version 3.0.2  
NDTS11\_15





4N-4024-15



G-No	D	D1	D2	D3	L	L1	L2	L3
1	20	34	36	42	58	35	23	18
2	22	36	38	44	58	35	23	18
3	24	38	40	46	58	35	23	18
4	25	39	41	47	58	35	23	18
5	28	42	44	50	58	35	23	18
6	30	44	46	52	58	35	23	18
7	32	46	48	54	58	35	23	18
8	33	47	49	55	58	35	23	18
9	35	49	51	57	58	35	23	18
10	38	54	58	64	63	38	25	20
11	40	56	60	66	63	38	25	20
12	42	58	62	68	63	38	25	20
13	43	59	63	69	63	38	25	20
14	45	61	65	71	63	38	25	20
15	48	64	68	74	63	38	25	20

G-No	D	D1	D2	D3	L	L1	L2	L3
16	50	66	70	76	64	39	25	20
17	52	68	72	78	65	40	25	20
18	53	69	73	79	65	40	25	20
19	55	71	75	81	65	40	25	20
20	58	76	83	89	69	41	28	22
21	60	78	85	91	69	41	28	22
22	62	80	87	93	69	41	28	22
23	63	81	88	94	69	41	28	22
24	65	83	90	96	69	41	28	22
25	68	86	93	99	71	41	30	24
26	70	90	95	101	72	42	30	24
27	75	95	104	110	72	42	30	24
28	80	100	109	115	73	42	31	25
29	90	110	119	125	76	45	31	25

No.	NAME	NOTES
1	O リング O RING	PTFE FF (TEFLON)
2	シール リング SEAL RING	CARBON
3	メーティング リング MATING RING ASS'Y	SIC RETAINER: TITANIUM
4	V パッキン V-PACKING	PTFE FF (TEFLON)
5	コンプレッション リング COMPRESSOIN RING	316 SS
6	コイル スプリング COIL SPRING	316 SS
7	カラー COLLAR	316 SS
8	ドライブ ピン DRIVE PIN	316 SS
9	セット スクリュー SET SCREW	316L SS

## REVISIONS

B	C
Mar. 22 '01 G-29 Added (N. Maruo)	Aug. 19 '03 Revised (K. Nakazumi)

Customer : Evonik Corporation  
PO# : 4701013179/4701319034  
Project : ACA G600  
Project# : 4142. 00940  
Evonik's Pump# : P-1020/P-1020S  
Requisition# : C0078-010

APPROVED

M. Sakai

CHECKED

T. Takeuchi

DRAWN

R. Takeuchi  
Feb. 2 '98

SCALE

FREE

DWG. TITLE メカニカル シール  
MECHANICAL SEAL  
TYPE: LIE

DWG. NO.

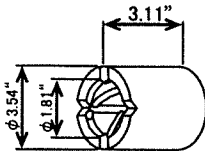
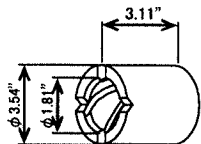
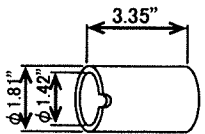
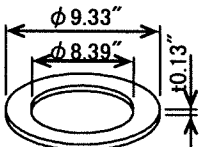
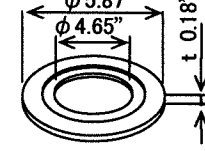
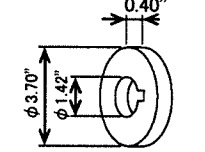
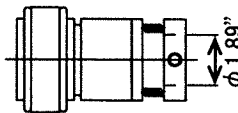

4N-4024-15



株式会社 帝国電機製作所

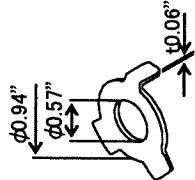
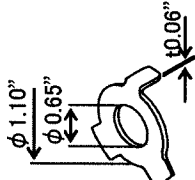

TEIKOKU ELECTRIC MFG. CO., LTD.

# SPARE PARTS LIST FOR RECOMMEND

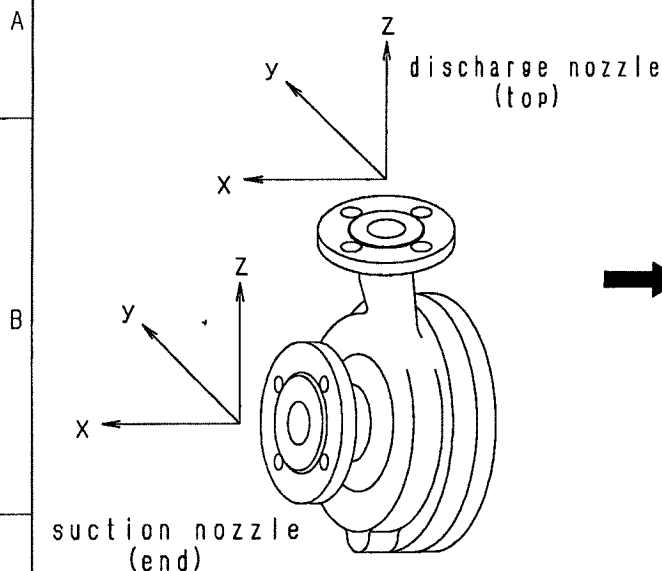
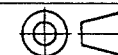
TYPE				SC-1044		1 2
DA-510-T						
No.	部 品 名 PARTS NAME	寸 法 DIMENSION	材 質 MATERIAL	数量/1 台 FOR 1SETS	備 考 REMARKS	
1	BEARING A (with spiral & straight grooves)		Carbon Graphite	1	#15A 90×46×79 (mm)	
2	BEARING B		Carbon Graphite	1	#15B 90×46×79 (mm)	
3	SHAFT SLEEVE		316 SS (SUS316) + Stellite	2	#17 46×36×85 (mm)	
4	GASKET		316 SS (SUS316) + Grafiol	1	#66A 237×213×3.2 (mm)	
5	GASKET		316 SS (SUS316) + Grafiol	2	#66B 149×118×4.5 (mm)	
6	THRUST COLLAR		316 SS (SUS316) + Stellite	2	#18 94×36×10 (mm)	
7	MECHANICAL SHEEL		Tun. Carbide + Carbon	1	#70 48 (mm)	
来歴. REV.	B:Revised (2016.3.14 M.Morii)  株式会社 帝国電機製作所 <b>TEIKOKU</b> ELECTRIC MFG. CO., LTD.		APPROVED	CHECKED	DRAWN	
			R. Takeuchi	R. Matsumura	M. Morii Aug. 21. '15	

Customer :Evonik Corporation  
 PO# :4701013179/4701319034  
 Project :ACA G600  
 Project# :4142. 00940  
 Evonik's Pump# :P-1020/P-1020S  
 Requisition# :C0078-010

# SPARE PARTS LIST FOR RECOMMEND

TYPE				SC-1044		2 2
DA-510-T						
No.	部 品 名 PARTS NAME	寸 法 DIMENSION	材 質 MATERIAL	数量/1 台 FOR 1SETS	備 考 REMARKS	
8	LOCK WASHER		316L SS (SUS316L)	1	#57A 24×14.5×1.5 (mm)	
9	LOCK WASHER		316L SS (SUS316L)	1	#57B 28×16.5×1.5 (mm)	
来歴 REV.		 株式会社 帝国電機製作所 <b>TEIKOKU</b> ELECTRIC MFG. CO., LTD.		APPROVED	CHECKED	DRAWN
				_____	_____	_____

4N-6993-05

CASING

#No	PUMP TYPE	Fsx	Fsy	Fsz	Fdx	Fdy	Fdz	Msx	Msy	Msz	Mdx	Mdy	Mdz
1	0204	670	530	430	360	290	450	350	170	260	230	120	180
2	0405	890	710	580	530	430	670	400	230	350	350	170	260
3	0506	1110	890	730	710	580	890	710	350	540	460	230	350
4	0608	1330	1070	890	890	730	1110	950	470	720	710	350	540
5	0810	1780	1420	1160	1070	890	1330	1330	680	1000	950	470	720
6	1012	2450	1960	1600	1420	1160	1780	1820	930	1380	1330	680	1000
7	1215	3110	2490	2050	1960	1600	2450	2300	1180	1760	1820	930	1380
8	1520	4890	3780	3110	2490	2050	3110	3530	1760	2580	2300	1180	1760
9	2025	6670	5340	4450	3780	3110	4890	5020	2440	3800	3530	1760	2580
10	1015	3110	2490	2050	1420	1160	1780	2300	1180	1760	1330	680	1000
11	0408	1330	1070	890	530	430	670	950	470	720	350	170	260
12	0508	1330	1070	890	710	580	890	950	470	720	460	230	350
13	1515	3110	2490	2050	2490	2050	3110	2300	1180	1760	2300	1180	1760
14	1010	1780	1420	1160	1420	1160	1780	1330	680	1000	1330	680	1000
15	1212	2450	1960	1600	1960	1600	2450	1820	930	1380	1820	930	1380

Customer : Evonik Corporation  
PO# : 4701013179/4701319034  
Project : ACA G600  
Project# : 4142. 00940  
Evonik's Pump# : P-1020/P-1020S  
Requisition# : C0078-010

NOTE : F = force (N) M = moment (N-m)

S = suction nozzle

d = discharge nozzle

See the figure for orientation of nozzle loads (x, y, z)

DQ1377

REVISIONS

B

Rewritten  
Aug. 7'08  
K. Nakazumi

C

Revised  
API610 8th  
Edition to API610  
10th Edition.  
Sep. 3'08  
Y. Shimizu

D

#11~#13  
Added  
Sep. 2'13  
K. Nakazumi

E

#14, #15 Added  
Mar. 20'15  
K. Nakazumi

APPROVED

CHECKED

DRAWN

SCALE

T. Takeuchi

S. Kimura

Y. Shimizu  
Apr. 11'08

FREE

DWG. TITLE

許容配管荷重

ALLOWABLE PIPING FORCES AND MOMENTS

SI Units

API610 (10th)

DWG. NO.



株式会社 帝国電機製作所

TEIKOKU ELECTRIC MFG. CO., LTD.

4N-6993-05

E



## HELIFLOW HEAT EXCHANGER SPECIFICATION SHEET

Customer:	Chempump Teikoku USA	Graham Ref.No.:	EG780 PHL16
Customer Ref:		Date:	Mar 8, 2016
Item:		Engineer:	NAS
<b>Performance</b>			
		Inside Coil	Outside Coil
Description of fluid circulated		ACA	50% ETH. GLY.
Specific Gravity		1.032	1.080
Specific Heat	BTU/lb F	0.443	0.740
Thermal Conductivity	BTU/hr ft F	0.079	0.244
Viscosity (Film For Liquids)	cP	7.355	11.295
Rate of Flow	gpm	5.00	5.00
Rate of Flow	lb/hr	2580.15	2699.11
Temperature Entering Heliflow	F	77.00	5.00
Temperature Leaving Heliflow	F	56.00	17.00
Calculated Pressure Drop	psi	2.23	1.37
Operating Pressure	psig	?	?
Design Pressure	psig	150.00	75.00
Hydrostatic Test Pressure	psig	195.00	98.00
Design Temperature	F	300.00	300.00
Connection Sizes	in	1/2"	1"
Connection Type		150# RF FLG	FNPT
Total Duty	BTU/hr	23987.46	
Total Surface Supplied	ft2	11.69	
Model		PSC-116T/6C6C	
Coil Spacing		STD	
Tubes 3/8 Dia 18 BWG	316SS	Manifolds	316SS
BasePlate	316SS	Bolts	Alloy Steel
Casing	316SS	Gaskets	Non-Asbestos
Tubes To Manifold Joint:	Welded		
Code of Construction:	GRAHAM STANDARD		
<b>General</b>			
Price F.O.B Batavia, N.Y.:			
Shipment:			
Weight	225.00 lb		
<b>Remarks</b>			
Buyer to review materials of construction for process compatibility.			
Buyer to verify fluid physical properties used in the design.			
Manifolds welded to baseplate.			
<b>1/2" MNPT Tube Side Vent Included.</b>			
Terms Conditions of Sale per GMC-1002-E unless otherwise indicated.			

C:\Documents and Settings\mquintilone\Desktop\Heliflow Spec Sheets\HFLOWCND.dot