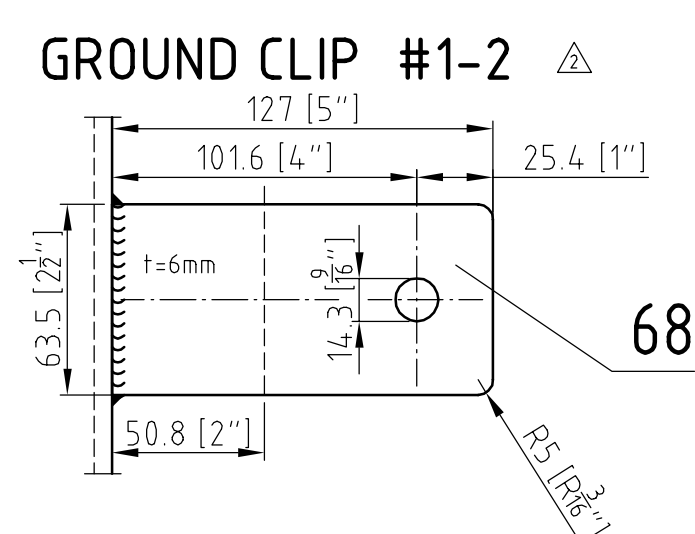
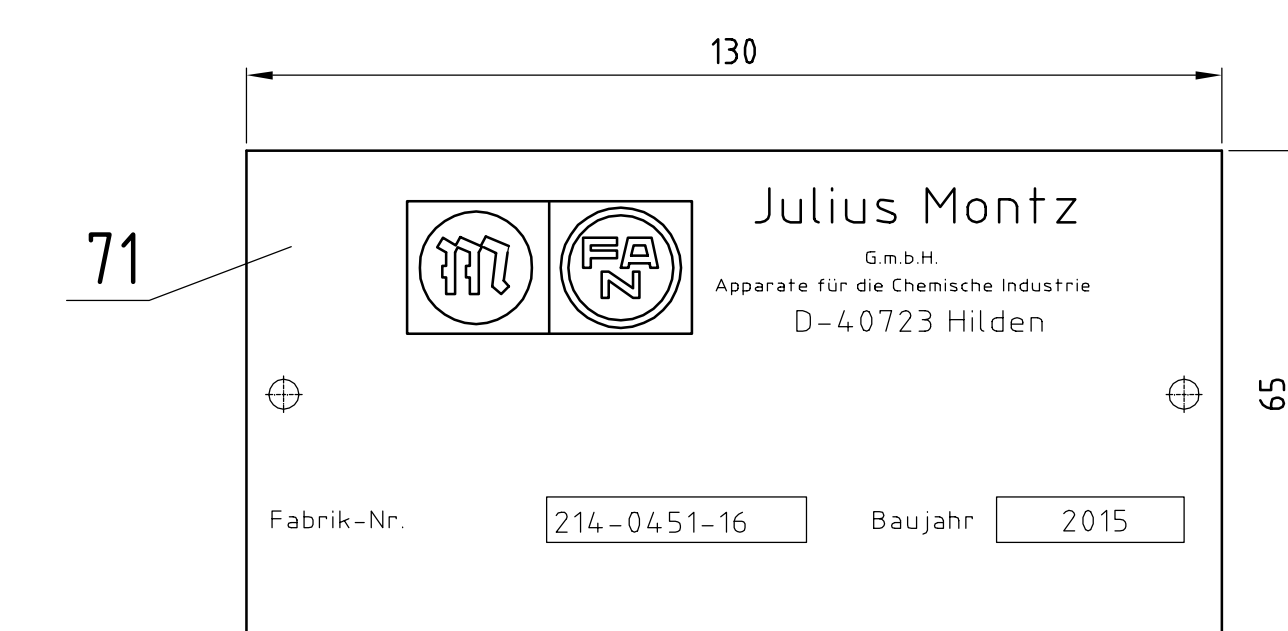
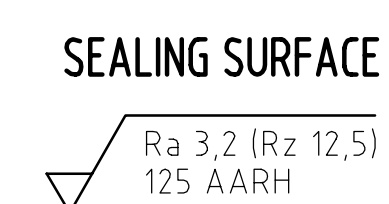


[illegible]

IN DEPENDENCE ON EVONIK TS 25-0801-2



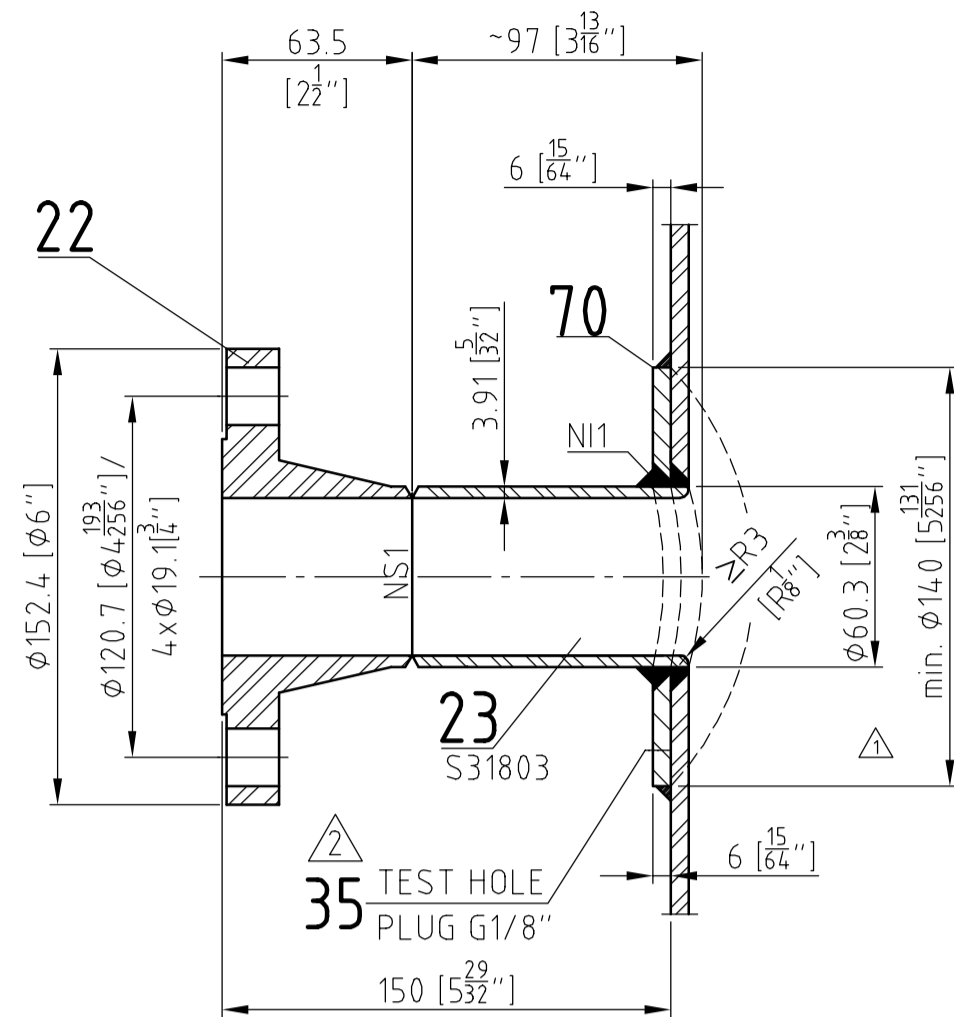
IN DEPENDENCE ON EVONIK TS 25-0801-2



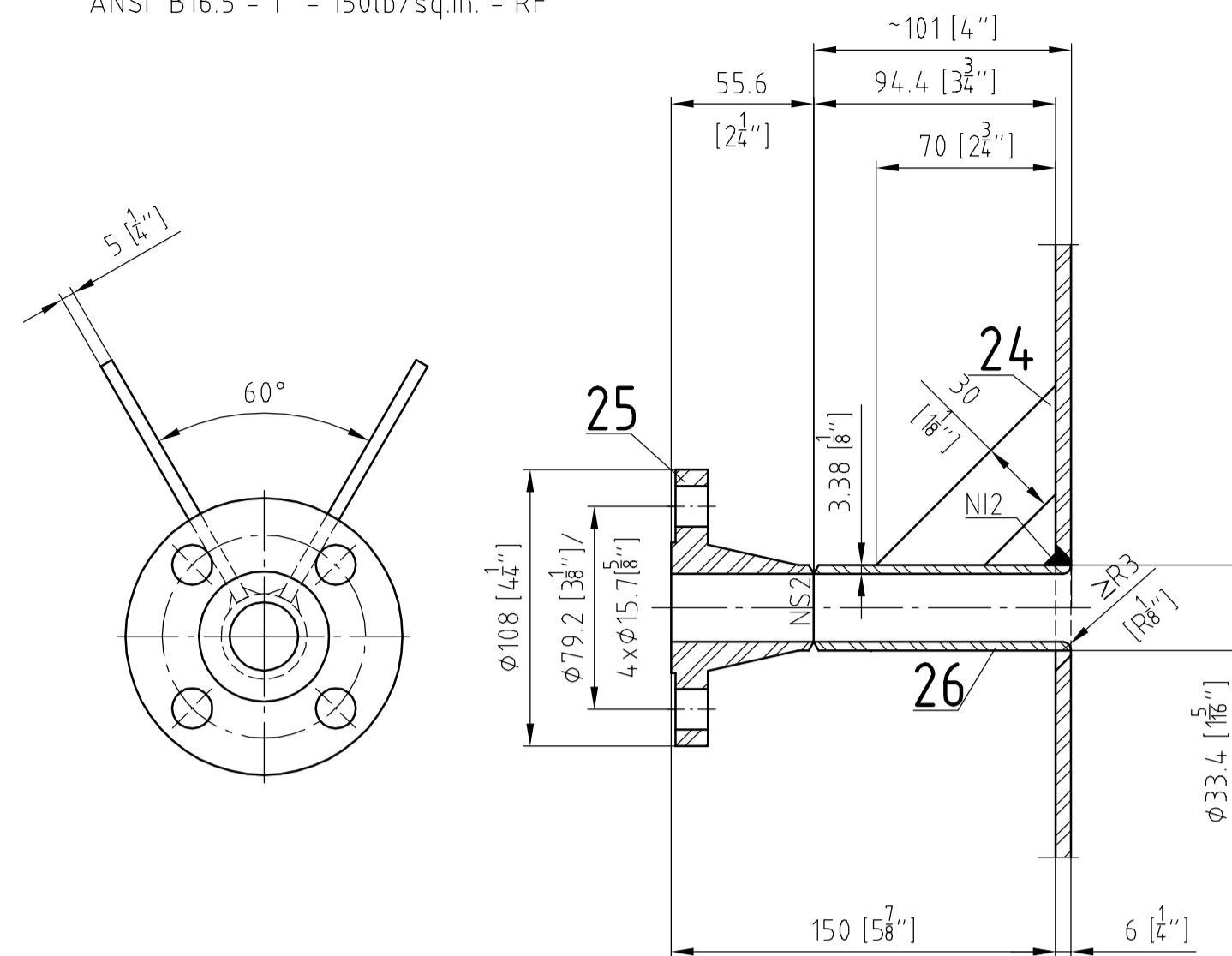
DATA/WELDING DETAILS SEE DRAWING 214-0451-16-001
PARTS LIST 214-0451-16-101 PARTS LIST

[illegible]

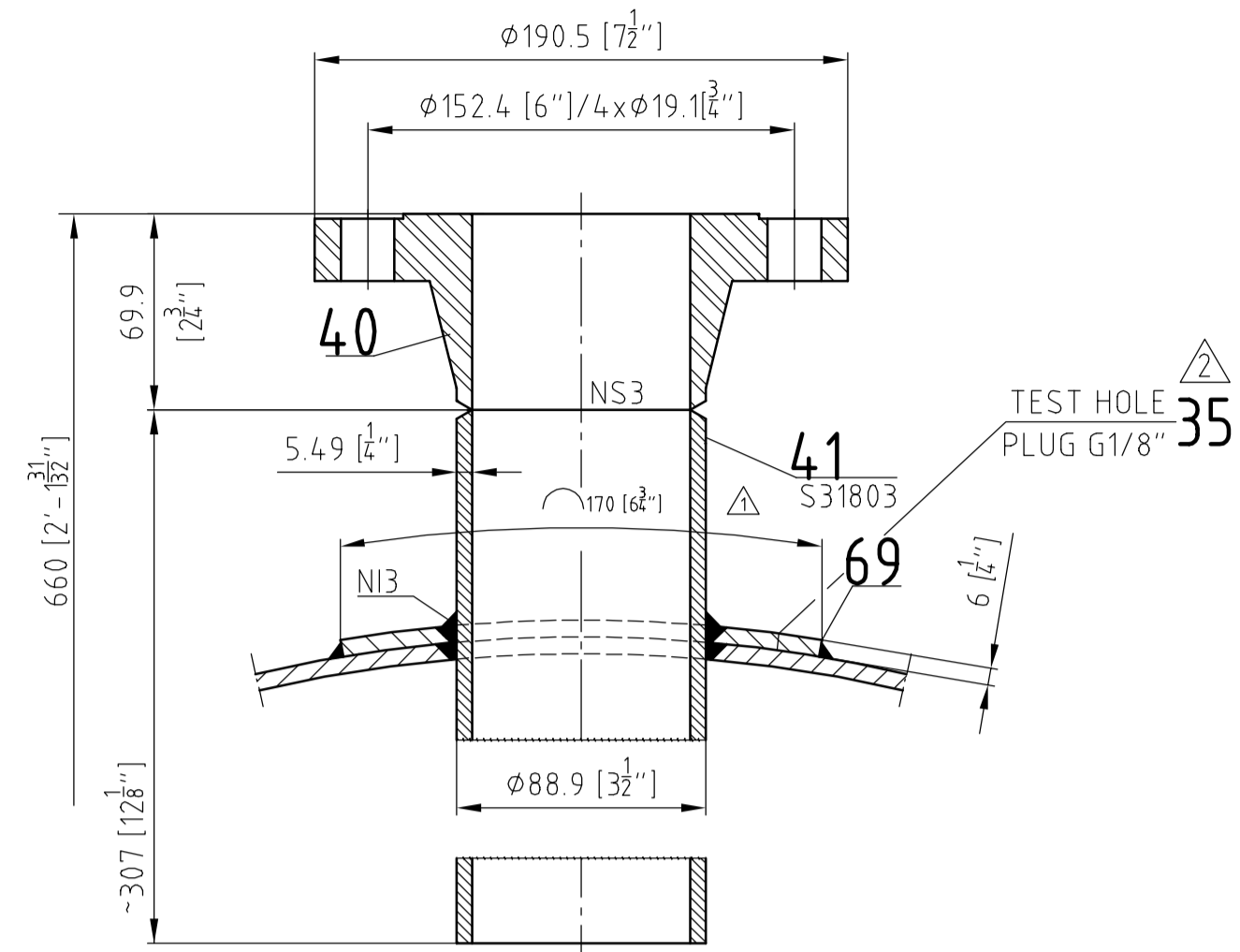
ANSI B16.5 - 2" - 150lb/sq.in. - RF



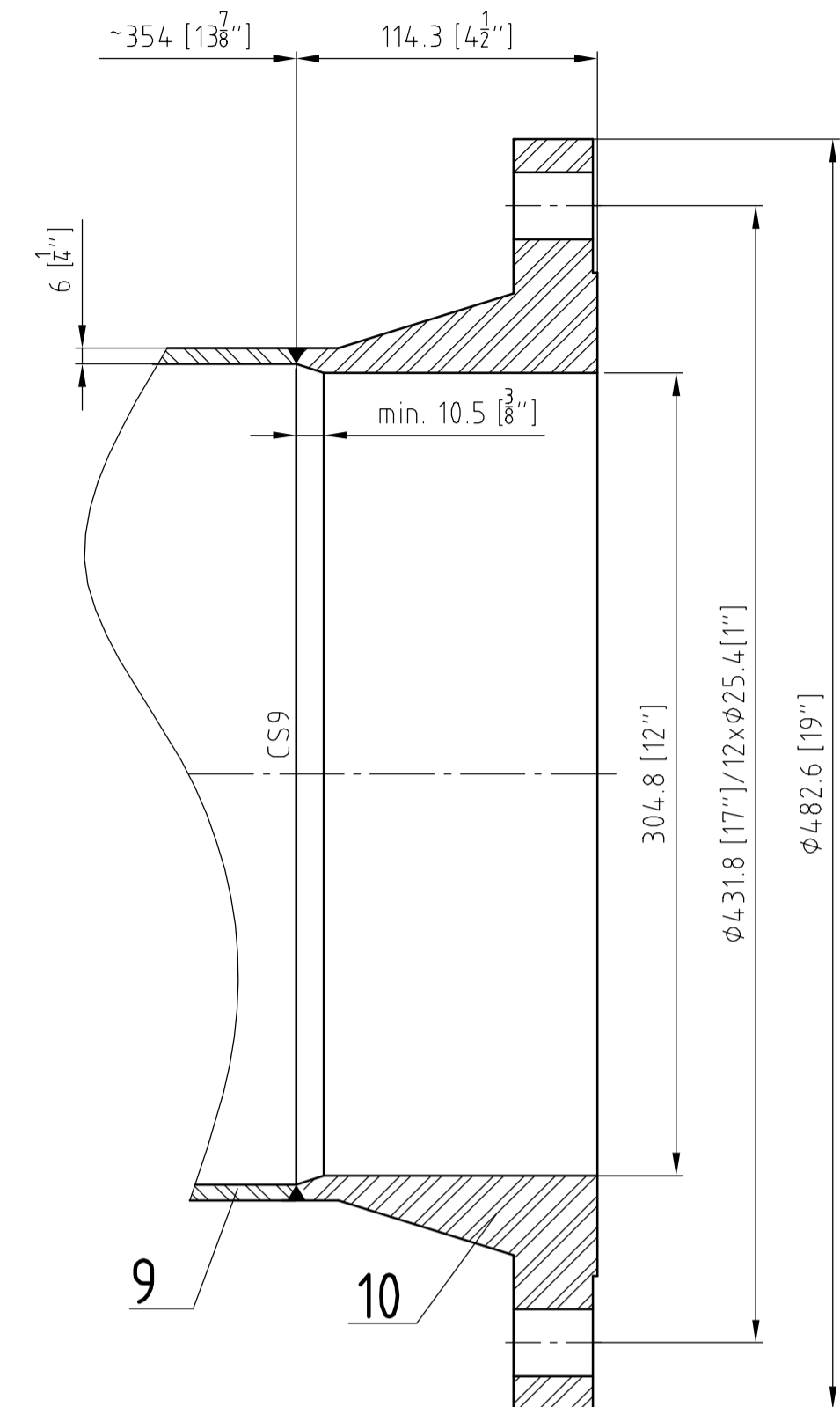
ANSI B16.5 - 1" - 150lb/sq.in. - RF



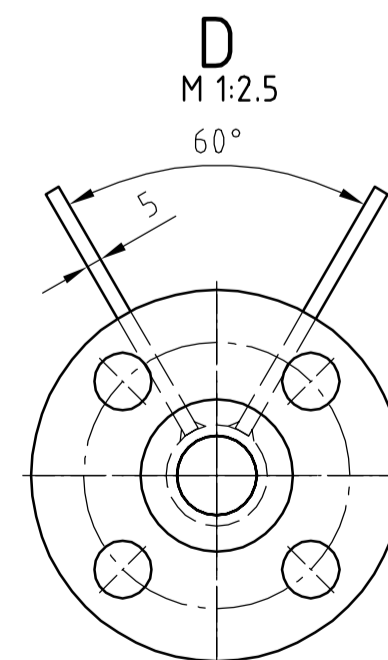
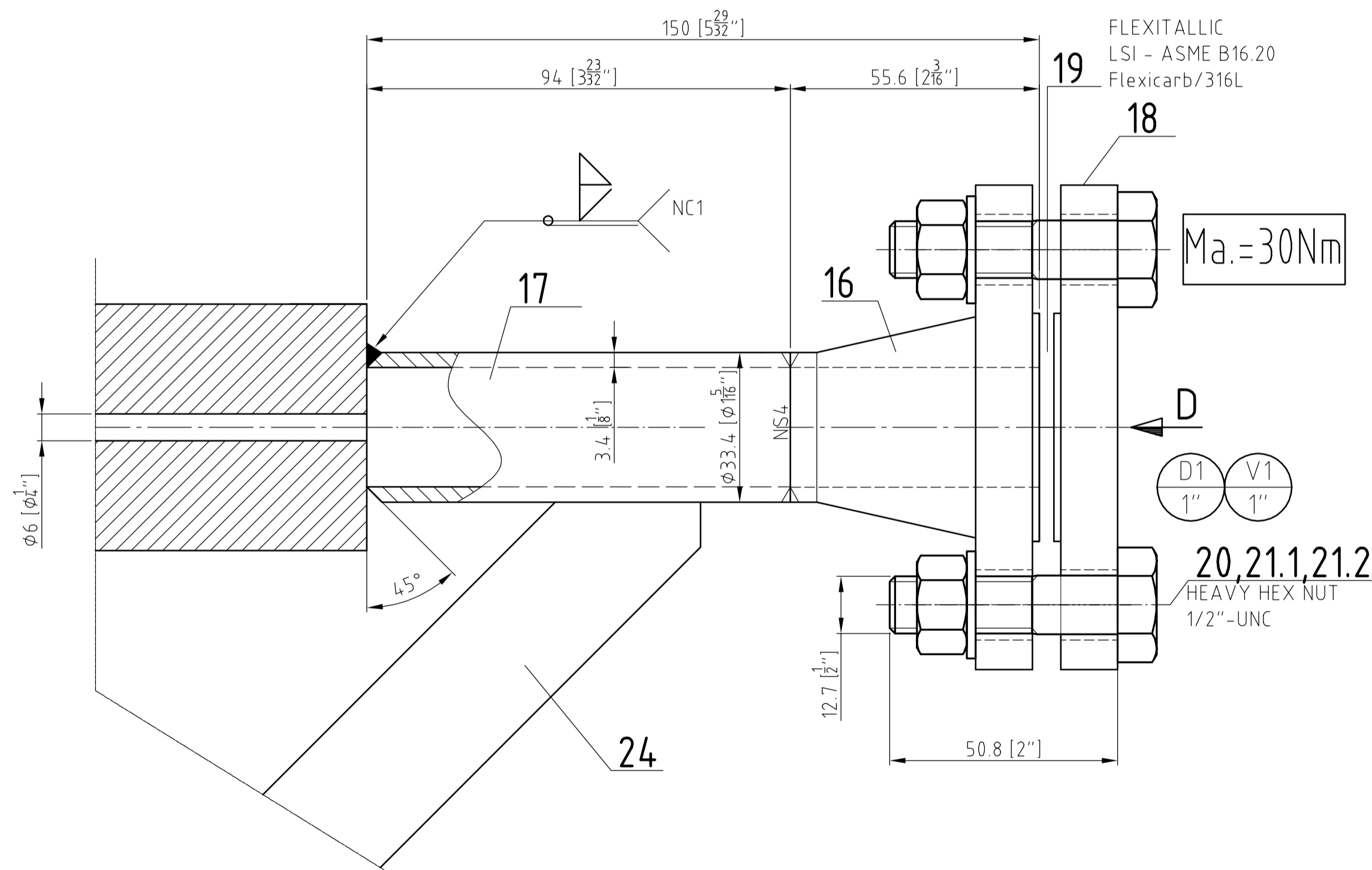
ANSI B16.5 - 3" - 150lb/sq.in. - RF



ANSI B16.5 - 12" - 150lb/sq.in. - RF



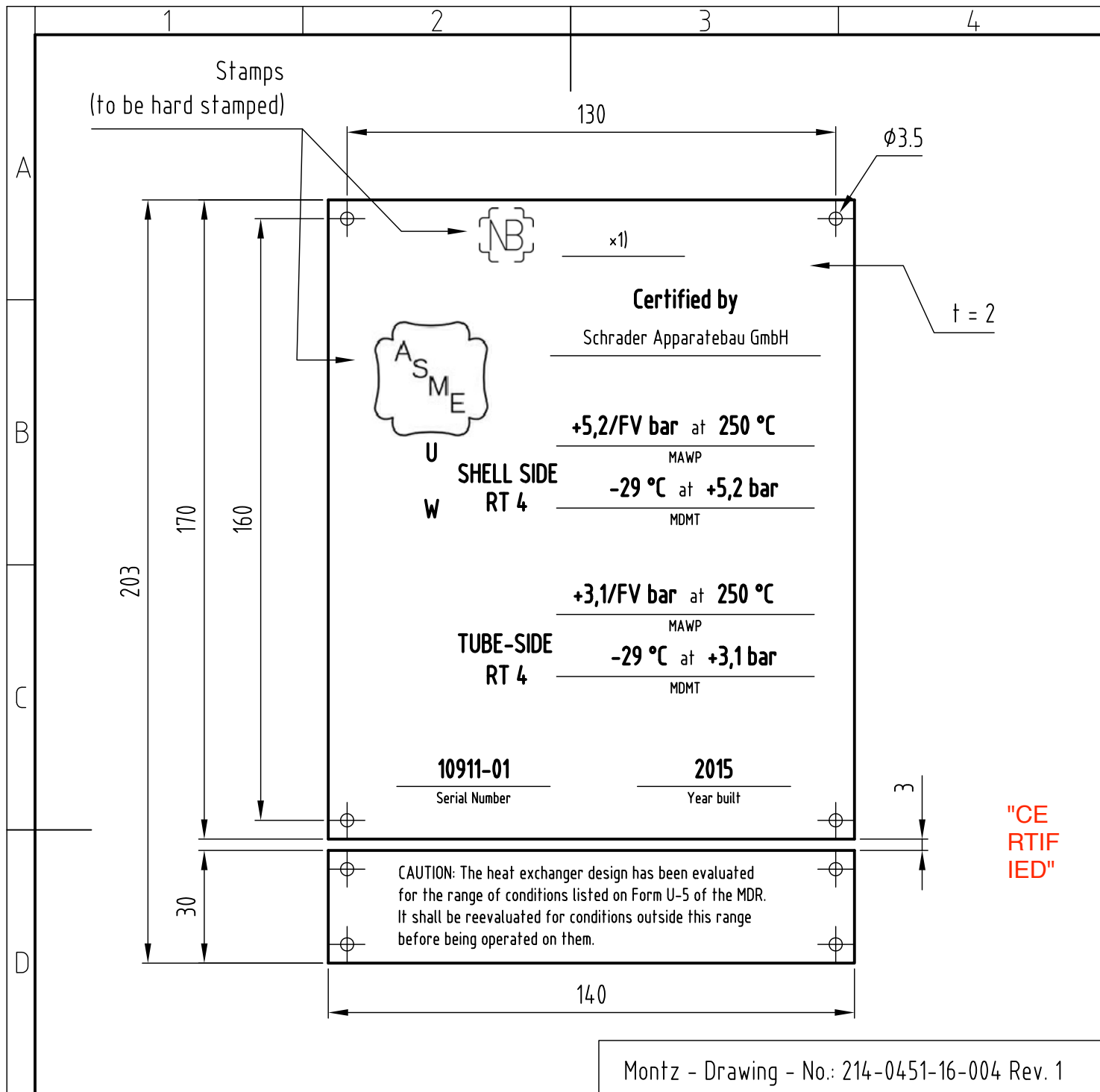
ANSI B16.5 - 1" - 150lb/sq.in. - RF



Ra 3,2 (Rz 12,5)
125 AARH

DATA/WELDING DETAILS SEE DRAWING 214-0451-16-001
PARTS LIST 214-0451-16-101 PARTS LIST

[illegible]



Change radiographic examination			13.11.2015	Haertel
Art der Aenderung / kind of revision			Datum	Name
Aenderungen / revisions				
CAD	Zeichng. darf nicht manuell geaendert werden		Schutzvermerk n. DIN ISO 16016 beachten protection mark acc. to DIN ISO 16016	
Auftrag Order	A15 / 10911		SCHRADER APPARATEBAU GMBH Schleebergstr. 12 • D-59320 Ennigerloh Tel.: +49 (0) 2524 266 0 • Fax: +49 (0) 2524 266 50 E Mail: info@schrader.de • Internet: www.schrader.de	
Zchnng. Drawg.	10911-01099	Revision 1		
Ers. fuer			Benennung/Denomination	Blatt sheet
ers. durch				1
	Datum/date	Name	Name Plate Material : SA240 - 304L	von/of
gez./drwd.	08.10.2015	Haertel		1
gepr./appr.	08.10.2015	Poppenborg	Project :	A4

