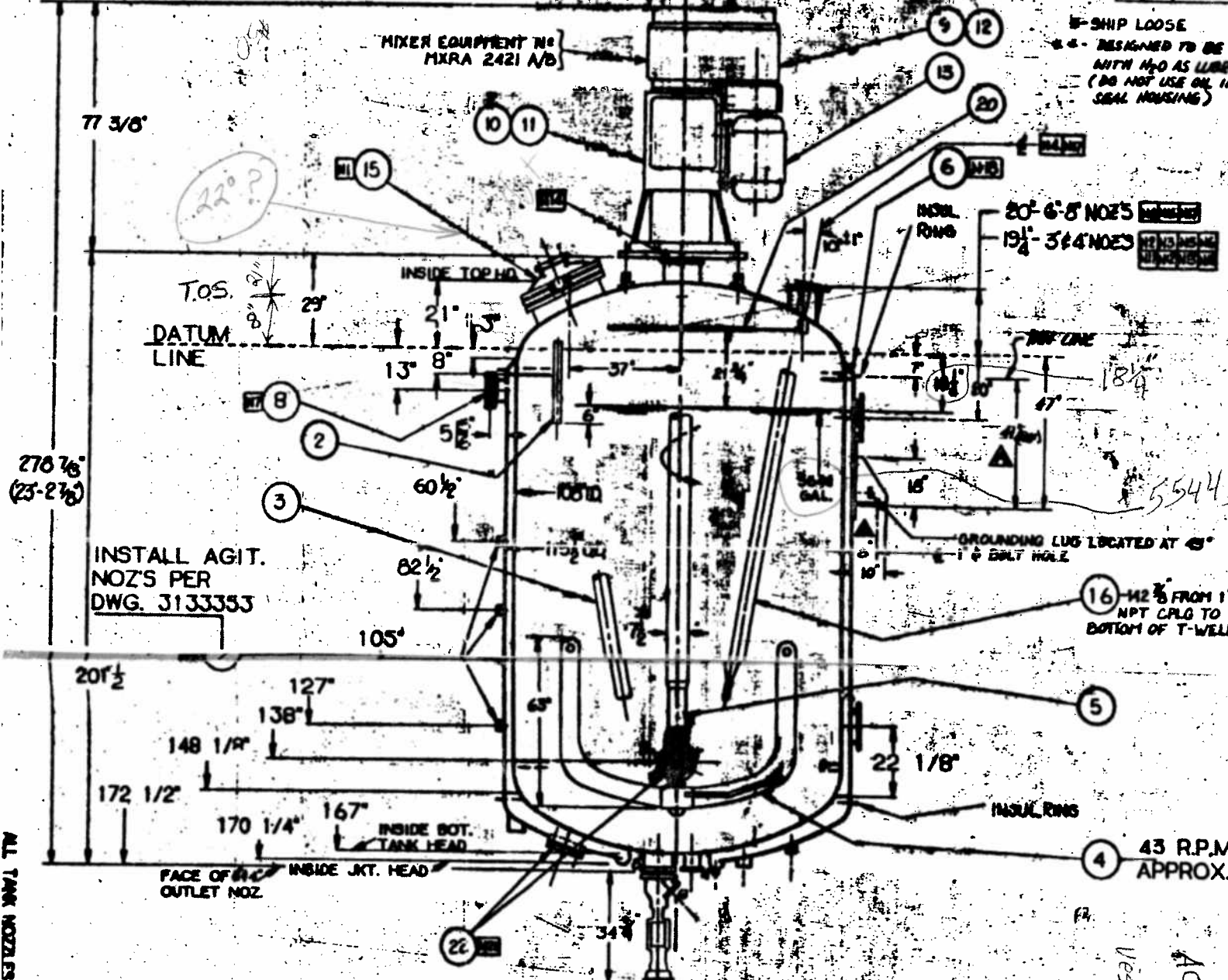
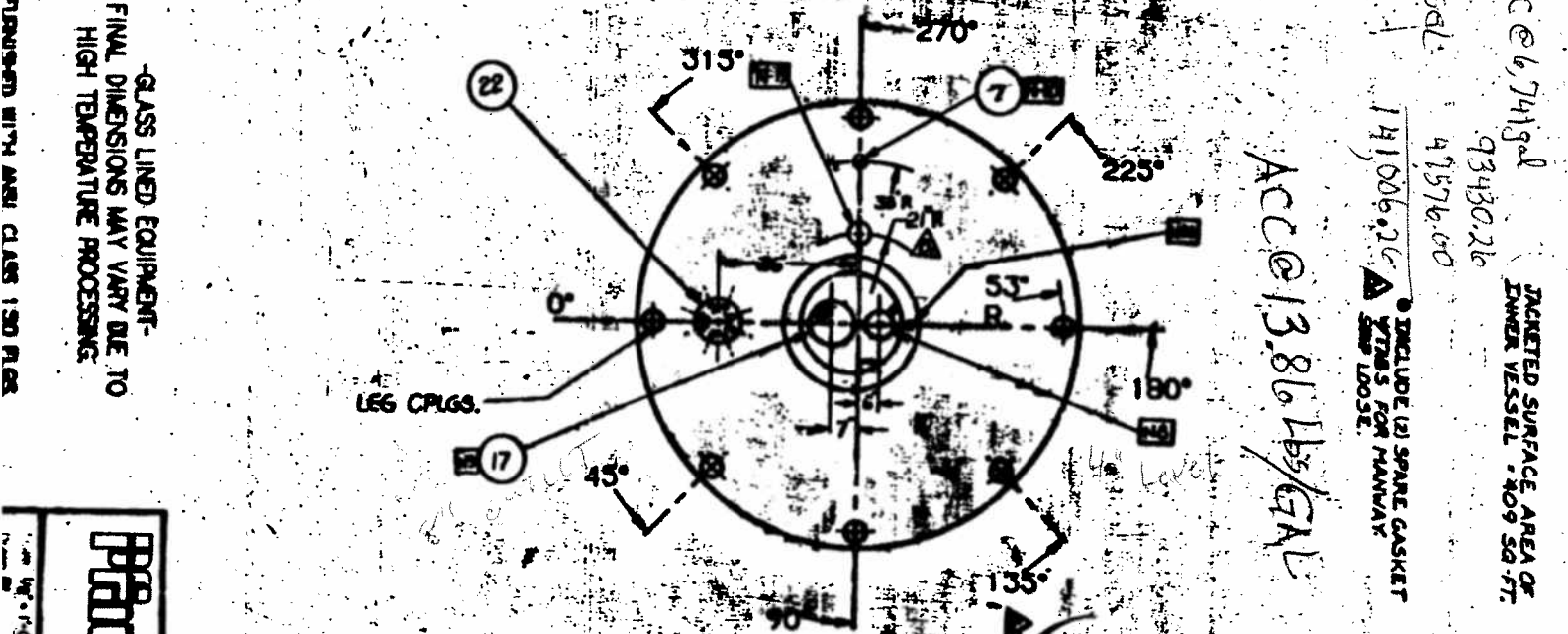
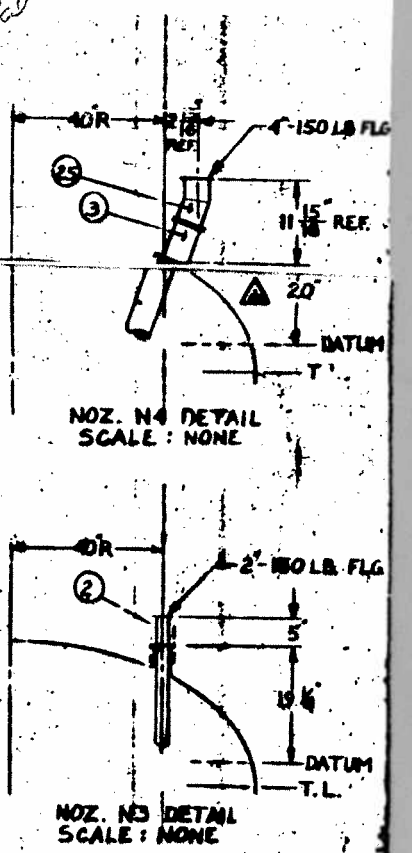


| NO. | QTY | ITEM NO. | DESCRIPTION |
|-----|-----|----------|---|
| 1 | 1 | 3153062 | SH#2 JCW, 108" x 134" |
| 2 | 2 | 3153062 | DR-PIPE 1/2" LBS, 50' TYP, 1/2" x 1/2" x 1/2" |
| 3 | 1 | 3153079 | DR-PIPE GL 500 x 1/2 x 1/2 x 1/2 |
| 4 | 1 | 3153074 | AGIT. ANCHOR NUC 70 SPAN 6 1/2 |
| 5 | 1 | 3153404 | SHAFT, CR-UK, NUC, 100R-7 1/2 |
| 6 | 1 | 1603617 | PLUG, 1/2" - 3000# |
| 7 | 5 | 1130002 | NOZ, AGIT, 2" |
| 8 | 1 | 3139096 | FLANGE ASSY, BLIND, 6" |
| 9 | 1 | 3520593 | REDUCER ASSY, 100RH |
| 10 | 1 | 3520758 | RED. & SEAL ASSY, 5584 NUC |
| 11 | 1 | 3519649 | LUBRICATOR, S.S., 3/4" IN, 20-250 PSI |
| 12 | 1 | 3515915 | MOUNTING, MTR. & CPLG. & AUXILIARY PARTS, 100RH |
| 13 | 1 | 3520606 | MOTOR, TBC 50 HP 3/4" x 460/1800, 3P, 5, 115V, 1/2" x 1/2" x 1/2" |
| 14 | 1 | 3106780 | NAMEPLATE ASSY. |
| 15 | 1 | 3485576 | COVER ASSY, M.H. NUC 1/4" MOD. 100 S.G. PROT. RING & SPR. BAL. |
| 16 | 1 | 3153076 | BAFFLE, NUC, SPL. 1/2" x 1/2" x 1/2" |
| 17 | 1 | 310256 | VALVE, MANU. ACT. GL 1/2" x 1/2" x 1/2" |
| 18 | 1 | 3100868 | SEAT VALVE, 3/4" - 1/2" (SPARE) |
| 19 | 3 | 3153195 | LINER, NOZ, TFE, 3/4" x 1/2" x 1/2" |
| 20 | 1 | 3153077 | RING, DOWNER, NUC, C-776 |
| 21 | 1 | 1362184 | SIGHT GLASS & LIGHT ASSY, 4" |
| 22 | 2 | 3100855 | HAND-HOLE ASSY, 4" x 50" |
| 23 | 4 | 1600348 | NUT, HEX, INY, 3/4" - 11, SA194-2H |
| 24 | 4 | 1602477 | BOLT, HEX FIN, 3/4" - 11, SA193-27 |
| 25 | 1 | 3153139 | SPALL, NUC, 4" x 1/2" x 1/2" |



| NO. | SIZE | SERVICE |
|------|------|---------------------------------|
| N-1 | 24" | MAINWAY 1/2" SIGHT GLASS |
| N-2 | 3" | VENT TO 6441 1/2" |
| N-3 | 3" | CONDENSATE INLET FROM 6441 1/2" |
| N-4 | 3" | DR-101 INLET FROM 6441 1/2" |
| N-5 | 3" | HCL INLET FROM P-7715 |
| N-6 | 3" | SHOWER RING FROM P-7715 |
| N-7 | 6" | JACKET NOZZLE OUTLET |
| N-8 | 4" | LEVEL ELEMENT UT-670/4271 |
| N-9 | 6" | OUTLET TO MTD-153 1/2" |
| N-10 | 2" | JACKET NOZZLE INLETS (5) |
| N-11 | 4" | SIGHT GLASS & LIGHT ASSY |
| N-12 | 3" | SHOWER RING SUPT. |
| N-13 | 3" | PG |
| N-14 | 10" | ASTATOR MOUNT |
| N-15 | 4" | LEVEL ELEMENT UT-670/4271 |
| N-16 | 6" | MOUNT FOR BAFFLE T-HILL |
| N-17 | 6" | EMERGENCY PRESS. RELIEF |
| N-18 | 1/2" | JACKET VENT W/PLUG |
| N-19 | 3" | JACKET DRAIN |
| N-20 | 1/2" | DRAIN, DRAIN W/PLUG |
| N-21 | 4" | INSPECTION CING. |



| NO. | QTY | ITEM NO. | DESCRIPTION |
|-----|-----|----------|---|
| 1 | 1 | 3153062 | SH#2 JCW, 108" x 134" |
| 2 | 2 | 3153062 | DR-PIPE 1/2" LBS, 50' TYP, 1/2" x 1/2" x 1/2" |
| 3 | 1 | 3153079 | DR-PIPE GL 500 x 1/2 x 1/2 x 1/2 |
| 4 | 1 | 3153074 | AGIT. ANCHOR NUC 70 SPAN 6 1/2 |
| 5 | 1 | 3153404 | SHAFT, CR-UK, NUC, 100R-7 1/2 |
| 6 | 1 | 1603617 | PLUG, 1/2" - 3000# |
| 7 | 5 | 1130002 | NOZ, AGIT, 2" |
| 8 | 1 | 3139096 | FLANGE ASSY, BLIND, 6" |
| 9 | 1 | 3520593 | REDUCER ASSY, 100RH |
| 10 | 1 | 3520758 | RED. & SEAL ASSY, 5584 NUC |
| 11 | 1 | 3519649 | LUBRICATOR, S.S., 3/4" IN, 20-250 PSI |
| 12 | 1 | 3515915 | MOUNTING, MTR. & CPLG. & AUXILIARY PARTS, 100RH |
| 13 | 1 | 3520606 | MOTOR, TBC 50 HP 3/4" x 460/1800, 3P, 5, 115V, 1/2" x 1/2" x 1/2" |
| 14 | 1 | 3106780 | NAMEPLATE ASSY. |
| 15 | 1 | 3485576 | COVER ASSY, M.H. NUC 1/4" MOD. 100 S.G. PROT. RING & SPR. BAL. |
| 16 | 1 | 3153076 | BAFFLE, NUC, SPL. 1/2" x 1/2" x 1/2" |
| 17 | 1 | 310256 | VALVE, MANU. ACT. GL 1/2" x 1/2" x 1/2" |
| 18 | 1 | 3100868 | SEAT VALVE, 3/4" - 1/2" (SPARE) |
| 19 | 3 | 3153195 | LINER, NOZ, TFE, 3/4" x 1/2" x 1/2" |
| 20 | 1 | 3153077 | RING, DOWNER, NUC, C-776 |
| 21 | 1 | 1362184 | SIGHT GLASS & LIGHT ASSY, 4" |
| 22 | 2 | 3100855 | HAND-HOLE ASSY, 4" x 50" |
| 23 | 4 | 1600348 | NUT, HEX, INY, 3/4" - 11, SA194-2H |
| 24 | 4 | 1602477 | BOLT, HEX FIN, 3/4" - 11, SA193-27 |
| 25 | 1 | 3153139 | SPALL, NUC, 4" x 1/2" x 1/2" |

