

NOTES:

1. ALL DIMENSIONS ARE IN INCHES. MULTIPLY BY 25.4 TO OBTAIN mm.
2. THIS EQUIPMENT IS DESIGNED TO SET ON PADS PROVIDED
3. DO NOT TRANSMIT EXTERNAL WEIGHT OR STRESS TO THE CASING. FLEXIBLE CONNECTIONS ARE REQUIRED.
4. DRAINS ARE ½ NPT WITH PLUGS.

MAT'L:

1. BASE - STRUCTURAL STEEL
2. IMPELLER - CAST ALUMINUM A356
3. BLOWER - CAST IRON ASTM A48 CL30
4. SHAFT - CARBON STEEL AISI 1144
5. PAINT - SPENCER TURBINE STANDARD PER PAINT PROCEDURE #STC-QAP-06.8

Total EST. Wt. 4,500 LBS

PERFORMANCE DATA

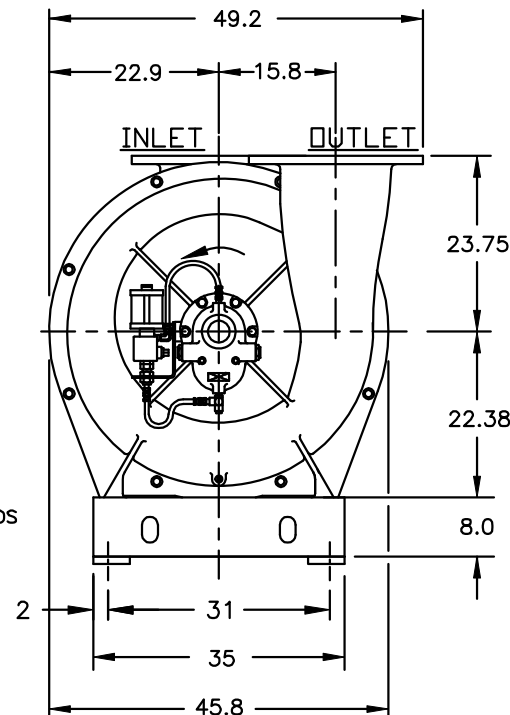
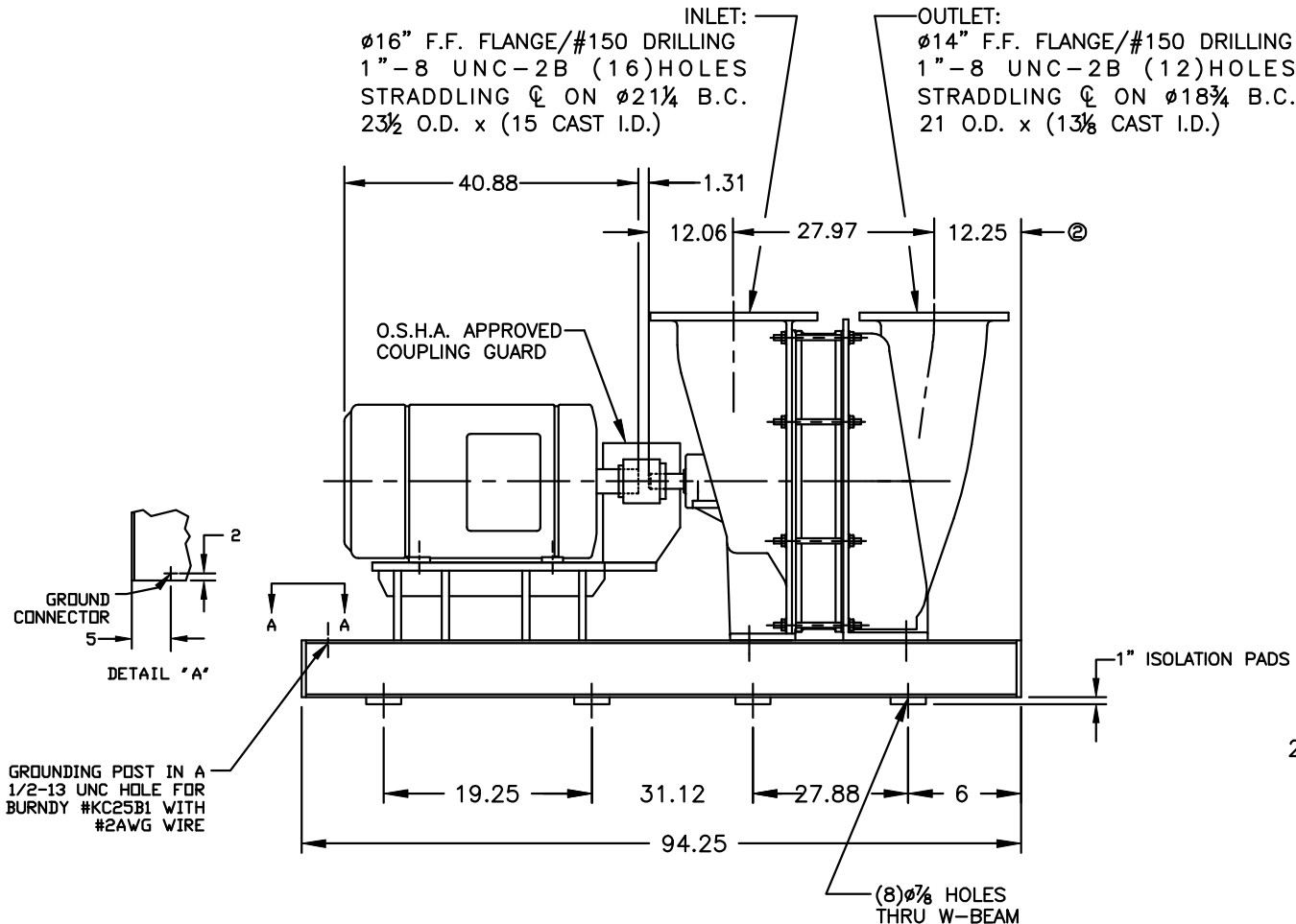
RATED 6205 ICFM
INLET TEMP. 70 °F
INLET PRESSURE 14.7 PSIA
DIFFERENTIAL PRESSURE 3 PSIG
DISCHARGE PRESSURE 17.7 PSIA
SPECIFIC GRAVITY 1.0
ALTITUDE - FT. ABOVE S. L.

MOTOR DATA

MAKE BALDOR
HORSEPOWER 125 FRAME SIZE 444TS
RPM 3500 VOLTAGE 460
PHASE 3 HERTZ 60
ENCLOSURE TYPE TEFC

COUPLING DATA

MAKE KOP-FLEX
TYPE FLEXIBLE DISC
MODEL/SIZE KD1 203
MOTOR BORE 2.375 BLOWER BORE 2.125



SPX Cat#: 7404571
Tag#: PG1080-BL1
PG2080-BL1

THIS DOCUMENT AND INFORMATION CONTAINED HEREIN IS PROPRIETARY TO THE SPENCER TURBINE CO. AND SHOULD NOT BE USED, COPIED OR DISCLOSED TO OTHERS, EXCEPT AS SPECIFICALLY AUTHORIZED IN WRITING BY THE SPENCER TURBINE CO.

THE SPENCER TURBINE CO.

WINDSOR, CT. 06095

TITLE: OUTLINE DIMENSIONS (2) STG
CENTRIFUGAL BLOWER, SERIES 5000

| | | |
|------------------|---------------------|-----------|
| SIZE B | DWG. NO. 209970P | REV. 2 |
| DR. BY CEL | CK'D BY | ENG. |
| DATE 10/12/11 | DATE | DATE |
| SCALE NONE | SHEET 1 | OF 1 |

PROJECT: KEMPER COUNTY IGCC, UNIT 1
SERVICE: CO2 DEHYDRATION UNIT-
REGENERATION BLOWER
TAG No.: PG1080/2080-BL1/BL1M
SOUTHERN Co. PO No.: MPC10026889

DIMENSIONS CERTIFIED FOR:

INSTALLATION OCALA, FL
CUSTOMER SPX FLOW TECHNOLOGY USA
CUSTOMER ORDER No. 4500462735
SALES ORDER No. 209970
SERIAL No. 814965 & 815966
MODEL No. C52RIA1

| | | | | |
|-----|-------------------------------|-----------|--------|-------|
| 2 | CHANGED BACK TO ORIGINAL DIM | 1-26-12 | CEL | EMC |
| 1 | ADD DROUND LUG, CUSTOMER INFO | 1/17/2012 | CEL | EMC |
| NO. | DESCRIPTION | DATE | DR. BY | CK' D |

REVISIONS

KBR

ACCEPTANCE
FOR ENGINEERING USE

THIS DOCUMENT IS:

ACCEPTED (Code 1) X
ACCEPTED WITH COMMENTS (Code 2)
NOT ACCEPTED (Code 3)
NOT REVIEWED (Code 4)

ACCEPTANCE DOES NOT RELIEVE SUPPLIER
FROM FURNISHING MATERIAL IN CONFORMANCE
WITH ORDER. REFER TO SDR-1 FOR FULL
DEFINITION OF ACCEPTANCE CONDITIONS.

DISCIPLINE MJ BY TST
DATE 26 JUN 12

Southern Company Generation Kemper County
MM95837 C Unit 1

SPX FLOW TECHNOLOGY PO: MPC10026889
209970P Rev: 2
IGCC - GASIFIER - CO2 DEHYDRATION UNIT - BLOWER - OUTLINE-SECTION