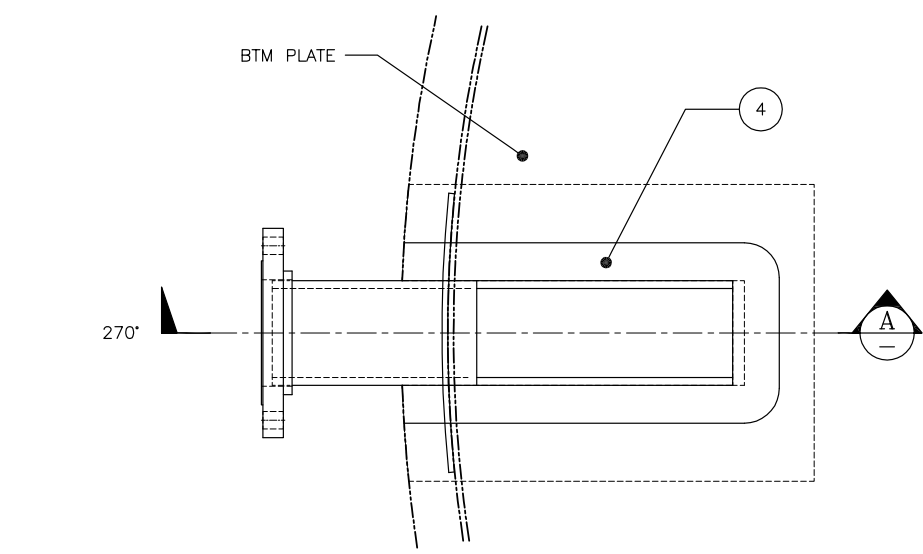
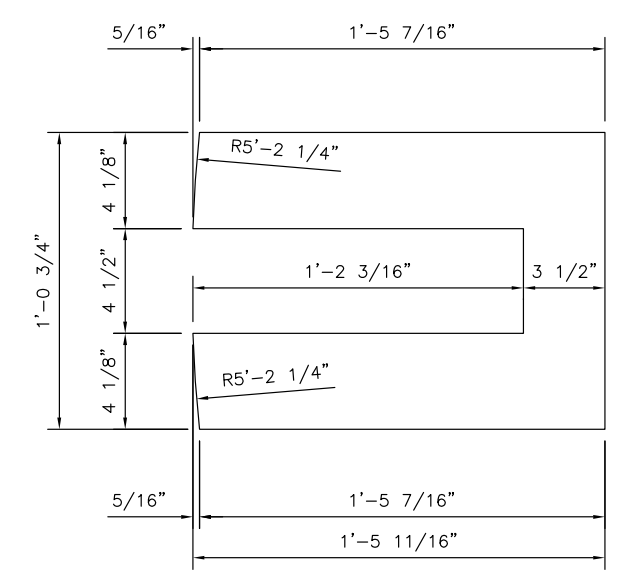
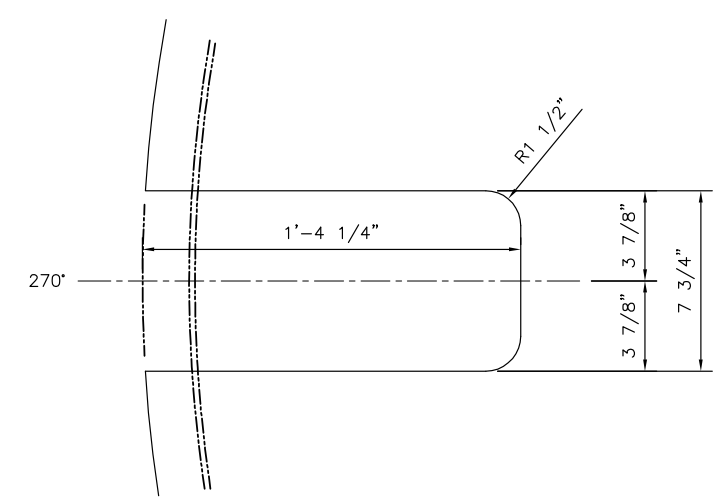


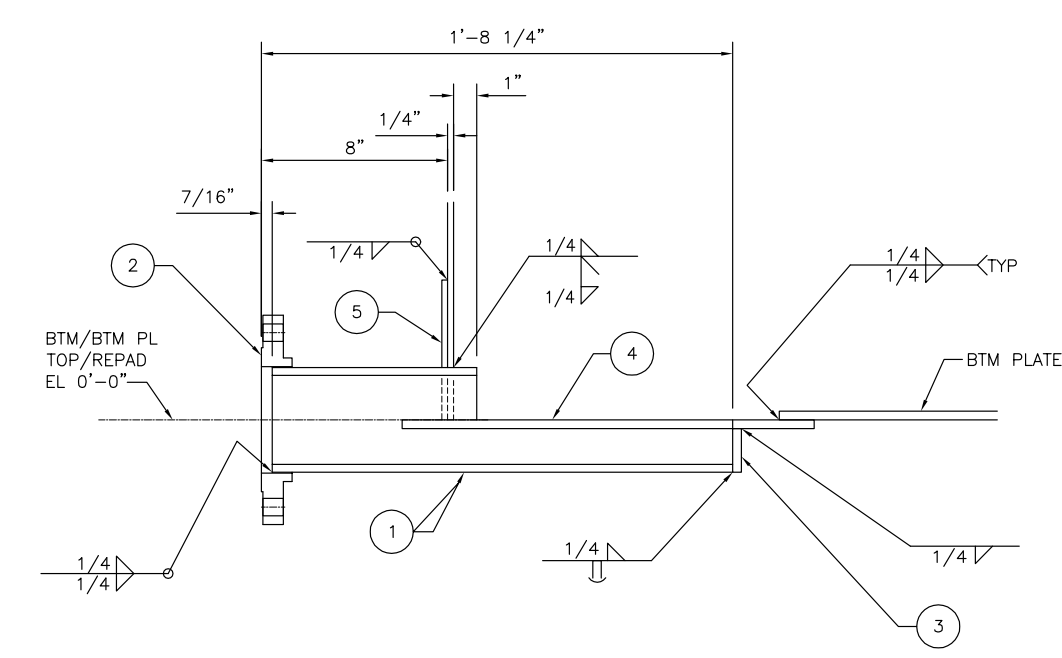
NOZZLE - V



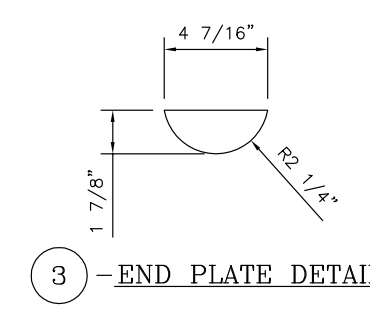
BOTTOM PLATE CUTOUT DETAIL



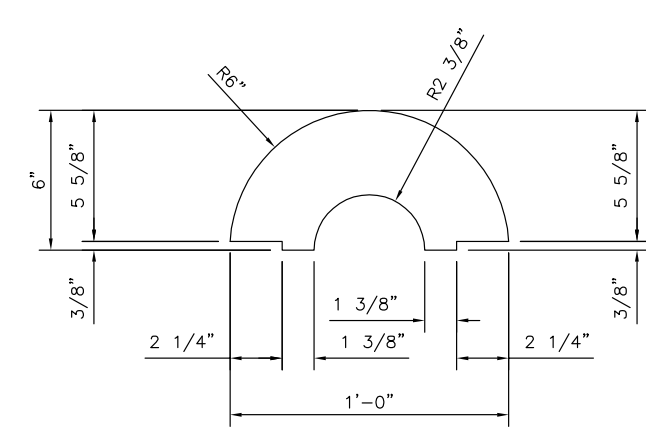
4 - BOTTOM PLATE REPAD DETAIL



SECTION A




3 - END PLATE DETAIL



5 - SHELL REPAD DETAIL

BILL OF MATERIALS						
QUAN	Pc	MK	DESCRIPTION	MAT'L	SOURCE NO.	WEIGHT
1	D		4" DRAIN	—	—	—
1	6-1		PIPE 4" SCH XS x 1'-7 13/16"	SA-53 B	16	25
1	6-2		FLANGE 4" 150# RFSO	SA-105	8	13
1	6-3		PL 1/2" x 1 7/8" x 0'-4 7/16"	SA-36	P24	1
1	6-4		PL 3/8" x 12 3/4" x 1'-5 11/16"	SA-36	P25	24
1	6-5		PL 1/4" x 6" x 1'-0" w/ 1/4" NPT	SA-36	P26	5
1	V		4" VENT	—	—	—
1	6-6		PIPE 4" SCH XS x 0'-5 5/16"	SA-53 B	16	7
2	6-8		FLANGE 4" 150# SCH XS RFWN	SA-105	17	15
1	6-9		ELBOW 4" SCH XS 180° LR	SA-234	18	27
1	6-10		GASKET 1/8" THK FOR 150# 4" FLG	NOTE 1	19	5
8	6-11		STUD BOLT 5/8"ø x 4 1/4" LG	SA-193-B7	20	3
16	6-12		HEX NUTS 5/8"ø	SA-194-2H	25	1
1	6-13		WIRE MESH 2" x 2" x 1/8" DIA WIRE x 4 1/2" OD	304 SS	27	1

NOTE:
1. SPIRAL WOUND GASKET, TP304SS WINDING,
GRAPHITE FILLER, TP204SS INNER RING,
CS OUTER RING.

0	6/21/11	RELEASE FOR FABRICATION	BW
REV	DATE	DESCRIPTION	BY
REVISIONS			
CRAFTING TANKS SINCE 1905 CHATTANOOGA BOILER & TANK COMPANY CHATTANOOGA, TENNESSEE			
CUSTOMER	SOUTHERN COMPANY SERVICES		
OWNER	MISSISSIPPI POWER COMPANY		
P.O. NUMBER	MPC10014582		
STRUCTURE IDENTIFICATION FILTRATE DRUM CONTENTS THIS SHEET NOZZLES D & V			
APP'D. BY CHIEF ENG.	DRAWN BY: BW	CHECKED BY:	DATE: 6/14/11
APP'D. BY O.C. MGR.	EQUIPMENT NO. DR0002		
	DRAWING NO.:	2084-01-06	
	PLANT IDENTIFICATION LIST		
PREP	FITTERS	FITTERS HB	WELDERS
SHIPPING	NOI PRIME	QC	FIELD SUPT
FIELD FOREMAN			