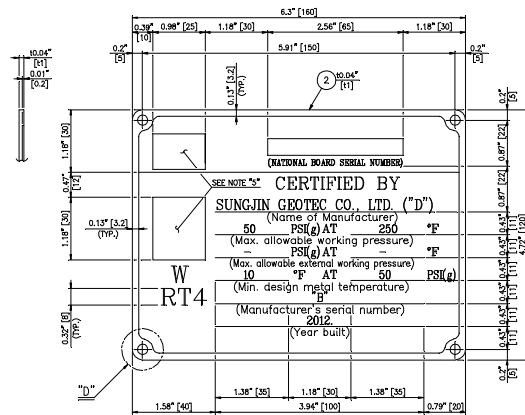
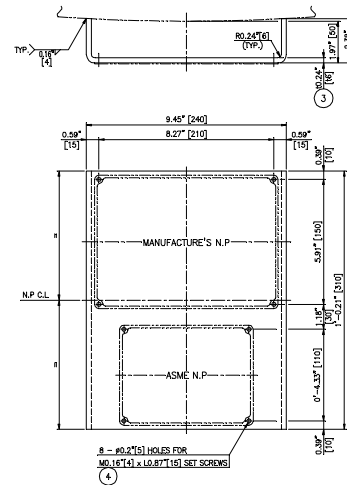


MANUFACTURER'S NAME PLATE



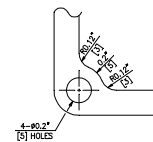
ASME NAME PLATE



DETAIL OF BRACKET

"A"	"B"	"C"	"D"
DR1064 (AGR REGENERATOR REFLUX DRUM)	11SP11-DR1064	130	SGT 1
DR2064 (AGR REGENERATOR REFLUX DRUM)	11SP11-DR2064	230	SGT 1

SERIAL NO. TABLE



DETAIL "D"

PART NAME	DESCRIPTION	MATERIALS	SIZE	QTY	SPARE	REMARK
EA 108 1	MANUFACTURER'S NAME PLATE	SA240-304	11 x 160 x 220	1	1	
EA 108 2	ASME NAME PLATE	SA240-304	11 x 120 x 160	1	1	
EA 108 3	BRACKET	SA240-304L	16 x 240 x 361	1	5	
EA 108 4	SET SCREW	304 S.S	M6 x L15	8	-	
TOTAL WEIGHT				7		KG

#### NOTES

- ALL DIMENSIONS ARE IN MM OTHERWISE NOTED.
- LETTERS, FRAME AND STAMPING SQUARES IN THE NAME PLATE SHALL BE EMBOSSED AND THEIR PAGES SHALL BE POLISHED BY BUFFING. THE OTHER PARTS SHALL BE ETCHED 0.5 MM IN DEPTH, AND THEN PAINTED AND BAKED WITH BLACK HEAT EXHAUST 0.1 MM THICKNESS.
- LETTERS TO BE AS FOLLOWS:  
- SERIAL NAME: CENTURY BOLD TYPE  
- OTHERS: GOTHIC TYPE
- DATE BUILT SHALL BE STAMPED AT SHOP AFTER SHOP INSPECTION.  
(EXAMPLE: 30 JUN. 2009)
- STAMPED (U) (R) UNDER A.I. WITNESS.
- THE SIZE OF CHARACTER IS 8 mm.

**KBR**

ACCEPTANCE  
FOR ENGINEERING USE

THIS DOCUMENT IS:

ACCEPTED (Code 1) ☒ X

ACCEPTED WITH COMMENTS (Code 2) ☐

NOT ACCEPTED (Code 3) ☐

NOT REVIEWED (Code 4) ☐

ACCEPTANCE DOES NOT RELIEVE SUPPLIER FROM FURNISHING MATERIAL IN CONFORMANCE WITH ORDER. REFER TO SDR-1 FOR FULL DEFINITION OF ACCEPTANCE CONDITIONS.

DISCIPLINE  BY  DATE



ASME CODE STAMPED  
WORK (U)

REV.	DATE	DESCRIPTION	DRWN	CHGD.	APPD.
18. Jan. '12		REVISED AS COMMENTS	B.M. ENG	D.H. HYUN	H.C. JUNG
14. Nov. '11		REVISED AS COMMENTS	B.M. ENG	D.H. HYUN	H.C. JUNG
12. Oct. '11		REVISED AS COMMENTS	B.M. ENG	D.H. HYUN	H.C. JUNG
01. Sep. '11		ISSUED FOR APPROVAL	B.M. ENG	D.H. HYUN	H.C. JUNG
REV.	DATE	DESCRIPTION	DRWN	CHGD.	APPD.
PROJECT:					
Kemper County IGCC Unit 1 Project					
KBR					
Engineering services by KBR Technical Services					
TBPE Reg. No. F-2397					
SOUTHERN COMPANY					
Southern Company, Inc.					
SUNGJIN GEOTEC CO., LTD					
ULSAN, KOREA					
TITLE:					
DR1064/2064					
AGR REGENERATOR REFLUX DRUM					
NAME PLATE DETAIL					
WILE 3	SCALE	REV'D NO.	2	SECS	P.O. NO.
	N/S	PLATE	1		MPC17984-0001
					SET W/O NO.
					11SP11
B1	DRAWING NO.				REV.
					MM87632

SGT JOB NO.: 11-SP-11

Southern Company Generation Kemper County  
MM87632 C Unit 1

SUNGJIN GEOTECH PO: MPC17984-0001  
SGT11-SP11-DR1064-2064-008 Rev: 3  
IGCC - GASIFIER - AGR REGENERATOR REFLUX DRUM - NAME PLATE DETAIL