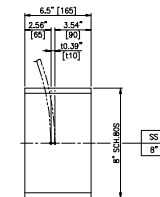
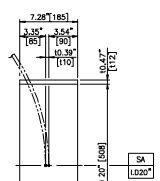


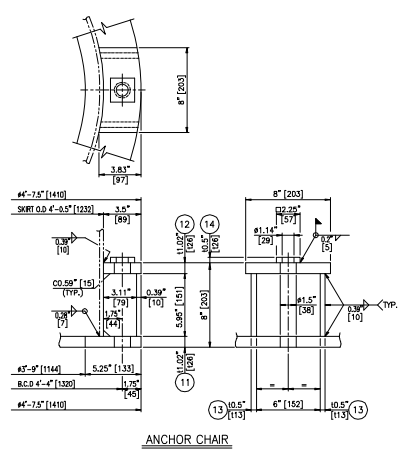
8 SKIRT VENT



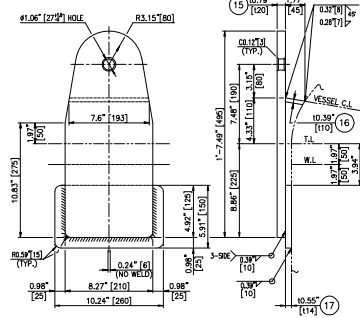
9 SKIRT SLEEVE



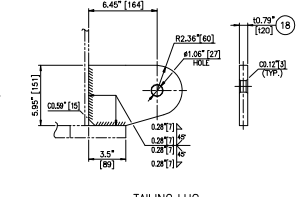
10 SKIRT ACCESS



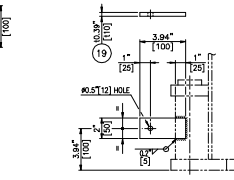
ANCHOR CHAIR



LIFTING LUG
(SEE FIELD NOTES)



TAILING LUG



GROUNDING LUG

PART NAME	DESCRIPTION	MATERIALS	SIZE	QTY	REMARK
SH 002 1	SHELL	SA240-304L	114 x 2058 x 3874	1	886
SH 002 2	SHELL	SA240-304L	114 x 1500 x 3874	1	644
HT 002 3	2:1 ELLIP. HEAD	SA240-304L	114 x #1589	1	221
HB 002 4	2:1 ELLIP. HEAD	SA240-304L	114 x #1589	1	221
SK 002 5	SKIRT	SA240-304L	110 x 874.2 x 3839	1	267
SK 002 6	SKIRT	SA240-304L	110 x 1650 x 3839	1	502
SK 002 7	SKIRT	SA240-304L	110 x 1489 x 3839	1	449
EA 002 8	SKIRT VENT	SA312-TP304L	3\" SCH 40S x L160	4	7
EA 002 9	SKIRT SLEEVE	SA312-TP304L	8\" SCH 80S x L165	1	11
EA 002 10	SKIRT ACCESS	SA240-304L	112 x 185 x 1634	1	29
SK 002 11	BASE RING	SA516-70	126 x L0114 x 0.0410	1	110
SK 002 12	COMPRESSION PLATE	SA516-70	126 x 97 x 203	8	33
SK 002 13	GUSSET PLATE	SA516-70	113 x 79 x 151	16	19
SK 002 14	WASHER	SA516-70	113 x 57 x 57	8	3
EA 002 15	LIFTING LUG	SA516-70	120 x 210 x 495	2	33
EA 002 16	SUPPORT RIB	SA516-70	110 x 46 x 193	2	2
EA 002 17	REIN. PAD	SA240-304L	114 x 150 x 260	2	9
EA 002 18	TAILING LUG	SA516-70	120 x 151 x 224	1	5
OT 002 19	GROUNDING LUG	SA240-304	110 x 50 x 100	2	1
TOTAL WEIGHT				3454	KG

FIELD NOTES

1. LUGS ARE BASED ON THE USE OF CROSBY 0-2130 SHACKLES.
2. USE OF A SPREADER BEAM DURING LIFT IS REQUIRED TO MAINTAIN LOADS WITHIN 1 DEGREE OF VERTICAL.

KBR
ACCEPTANCE
FOR ENGINEERING USE

THIS DOCUMENT IS:

ACCEPTED	(Code 1) <u>X</u>
ACCEPTED WITH COMMENTS	(Code 2) <u> </u>
NOT ACCEPTED	(Code 3) <u> </u>
NOT REVIEWED	(Code 4) <u> </u>

ACCEPTANCE DOES NOT RELIEVE SUPPLIER FROM FURNISHING MATERIAL IN CONFORMANCE WITH ORDER. REFER TO SPEC. FOR FULL DEFINITION OF ACCEPTANCE CONDITIONS.

DISCIPLINE VM BY MM DATE 21 DEC 11

2011.12.02

ASME CODE STAMPED WORK (U)

01. Dec. '11	REVISED AS COMMENTS	B.M. ENG	D.H. HYUN	H.C. JUNG	
12. Oct. '11	REVISED AS COMMENTS	B.M. ENG	D.H. HYUN	H.C. JUNG	
01. Sep. '11	REVISED AS COMMENTS	B.M. ENG	D.H. HYUN	H.C. JUNG	
15. Jun. '11	REVISED AS COMMENTS	B.M. ENG	J.K. KIM	H.C. JUNG	
11. Apr. '11	ISSUED FOR APPROVAL	B.M. ENG	J.K. KIM	H.C. JUNG	
REV.	DATE	DESCRIPTION	DRWN	CHKD.	APPD.

PROJECT: Kemper County IGCC Unit 1 Project

KBR
Engineering services by KBR Technical Services
TBPE Reg. No. F-2397

SOUTHERN COMPANY
Southern Company, Inc.

SUNGJIN GEOTEC CO., LTD
ULSAN, KOREA

TITLE: DR1064/2064
AGR REGENERATOR REFLUX DRUM
BODY DETAIL

ANG 3	SCALE	REVD NO.	SETS	P.O. NO.	MPC17984-0001	SHEET NO.	1 OF 1
	N/S	PLANT	Kemper County	DRW. NO.	SGT11-SP11-DR1064/2064-002	SGT 8/0 NO.	11SP11
B1	DRAWING NO.	MM78155		REV			

SGT JOB NO. : 11-SP-11

Southern Company Generation Kemper County
MM78155 D Unit 1

SUNGJIN GEOTECH PO: MPC17984-0001
SGT11-SP11-DR1064-2064-002 Rev: 4
IGCC - GASIFIER - SELEXOL H2S ABSORBERS - AGR RE GENERATOR REFLUX