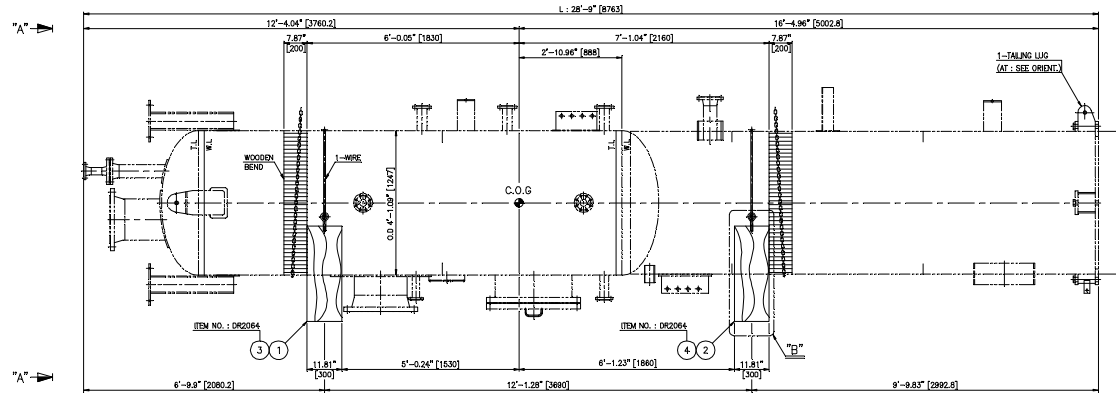
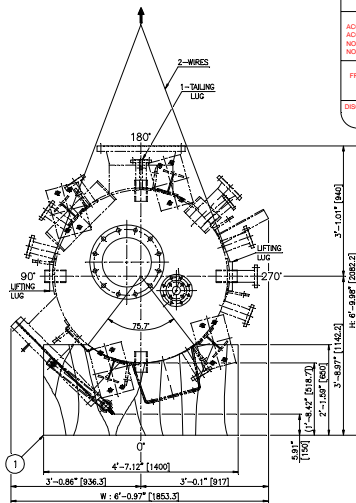
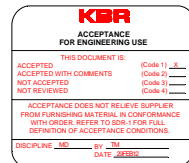


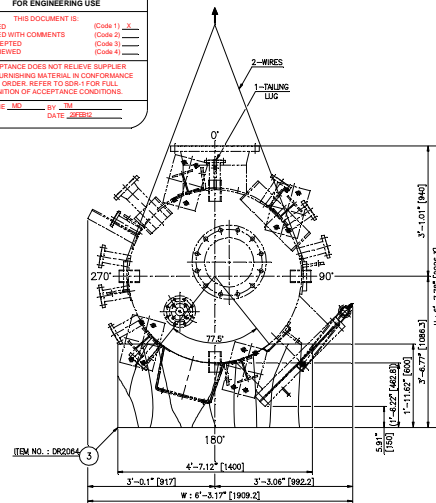
PART NAME	DESCRIPTION	MATERIALS	SIZE	QTY	WEIGHT	REMARK
EA 009 1	WOODEN	WOOD	300 x 650 x 1400	1	246	
EA 009 2	WOODEN	WOOD	300 x 650 x 1400	1	246	
EA 009 3	WOODEN	WOOD	300 x 650 x 1400	1	227	
EA 009 4	WOODEN	WOOD	300 x 650 x 1400	1	227	
TOTAL WEIGHT				946	KG	



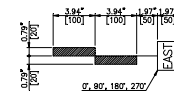
SHIPPING DRAWING
(SCALE 1/16)



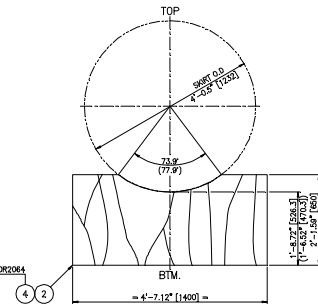
NOZZLE ORIENTATION
(VIEW 'A'-A')
[ITEM NO.: DR1064]
(SCALE 1/16)



NOZZLE ORIENTATION
(VIEW 'B'-B')
[ITEM NO.: DR2064]
(SCALE 1/16)



ORIENTATION MARK
(SEE NOTE 7)



DETAIL 'B'
() DIM. FOR ITEM NO.: DR2064 ONLY

DETAIL OF NOZZLE PROTECTION BLIND

ASME CODE STAMPED
WORK (U)

NOTES

- TO BE CHECKED & ADJUST ALL SITE.
- FLANGE OPENINGS : STEEL COVER (MIN. 6mm) & RUBBER GASKET (3mm) WITH HEX B/N (MIN. 46ETS).
- MINIMUM BOLTING REQUIREMENT :
- FLANGES WITH 4 TO 12 BOLT HOLES - MIN. 4 BOLTS/NUTS.
- FLANGES WITH 16 TO 24 BOLT HOLES - MIN. 8 BOLTS/NUTS.
- CUT-OFF IF THE PLUMWOOD PROTECTION IT INTERFERENCE WITH EXTERNAL ACCESSORIES.
- TO PROTECT CARDO DAMAGE INSERT RUBBER SHEET BETWEEN SHIPPING SADDLE AND EQUIPMENT.
- LOOSE SUPPLY LIST
- WASHER : 1/3 x 5/7 x 5/7 = 8EA
- RUST PREVENTION : DESICCANT
- THE NORTH AND EAST ORIENTATIONS SHALL BE CENTER-PUNCHED ON THE OUTSIDE OF EACH VERTICAL VESSEL APPROXIMATELY 6 INCHES(150mm) ABOVE THE BOTTOM TANGENT LINE AND 6 INCHES(150mm) BELOW THE TOP TANGENT LINE.

DIMENSION	L (cm)	W (cm)	H (cm)
DR1064	2'-10.53" [877]	7.32" [186]	8.23" [209]
DR2064	2'-10.53" [877]	7.52" [191]	7.90" [203]
VOLUME (DR1064)	1204.2		ft ³
VOLUME (DR2064)	1200.7		ft ³
GROSS WEIGHT	23228 (10536)		Lb(lb)
NET WEIGHT	21142 (9590)		Lb(lb)
PACKAGE NO.	-		

REV.	DATE	DESCRIPTION	DRWN	CHKD	APPD.
18. Jan. '12		REVISED AS COMMENTS	[Signature]	[Signature]	[Signature]
12. Oct. '11		ISSUED FOR APPROVAL	BJM ENG	CUH HYUN	HJO JUNG

PROJECT:

Kemper County IGCC Unit 1 Project

KBR

Engineering services by KBR Technical Services
TBPE Reg. No. F-2397

SOUTHERN COMPANY
Southern Company, Inc.

SUNGJIN GEOTEC CO., LTD
ULSAN, KOREA

TITLE: DR1064/2064
AGR REGENERATOR REFLUX DRUM

SHIPPING DRAWING

WEEK	SCALE	REV.	NO.	SECT.	P.O. NO.	REV.	NO.	SHEET	NO.
3	SEE DWG.	2	NO. 1	SECT.	MPC17984-0001	1	OF 1	1	OF 1
B1	DRAWING NO.	Kemper County		DRG. NO.	SGT11-SP11-DR1064/2064-009	1	OF 1	1	OF 1

MM92301

SGT JOB NO.: 11-SP-11

Southern Company Generation Kemper County
MM92301 A Unit 1

SUNGJIN GEOTECH PO: MPC17984-0001
SGT11-SP11-DR1064-2064-009 Rev: 1
IGCC - GASIFIER - OUT & REFLUX DRUMS - AGR REGENERATOR REFLUX DR