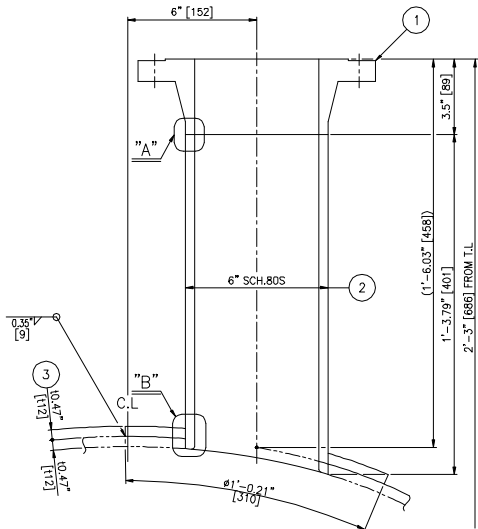
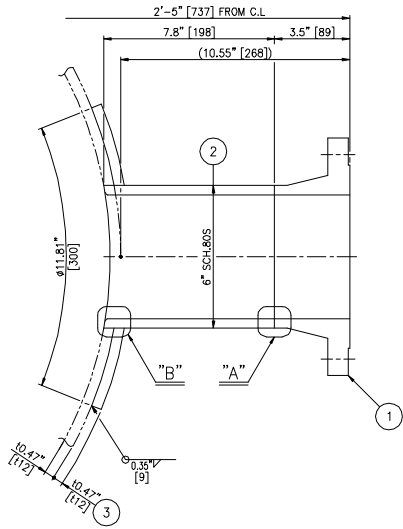


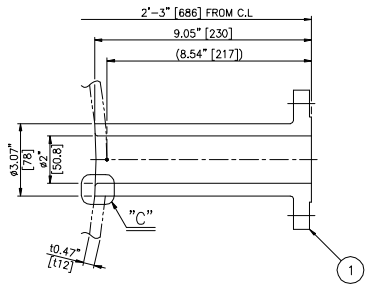
PART NAME	DESCRIPTION	MATERIALS	SIZE	QTY	SPARE	WEIGHT	REMARK
NHT AD 1	FLANGE	SA182-F304L	6" ASME 150# WLRFSCH.80S	1		11	
NHT AD 2	NOZZLE NECK	SA312-TP304L	6" SCH.80S x L401	1		12	
NHT AD 3	REINF. PAD	SA240-304L	112 x Ø300	1		5	
NHT AV 1	FLANGE	SA182-F304L	2" ASME 150# FNRFX481	1		10	
NSH BE 1	FLANGE	SA182-F304L	6" ASME 150# WLRFSCH.80S	1		11	
NSH BE 2	NOZZLE NECK	SA312-TP304L	6" SCH.80S x L201	1		9	
NSH BE 3	REINF. PAD	SA240-304L	112 x Ø300	1		5	
NSH BS 1	L-FLANGE	SA182-F304L	2" ASME 300# LWRFX230	4		35	
NSH BS 1	L-FLANGE	SA182-F304L	2" ASME 150# LWRFX230	1		8	
NSH BS 1	L-FLANGE	SA182-F304L	2" ASME 300# LWRFX230	4		35	
NSH BS 1	L-FLANGE	SA182-F304L	2" ASME 150# LWRFX230	1		8	
NSH TT1 1	L-FLANGE	SA182-F304L	1 1/2" ASME 300# LWRFX230	1		8	
TOTAL WEIGHT				162		KG	



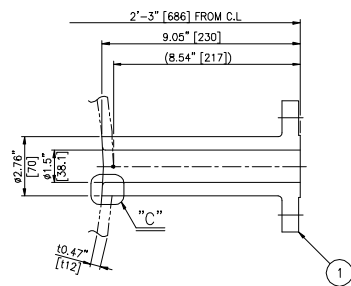
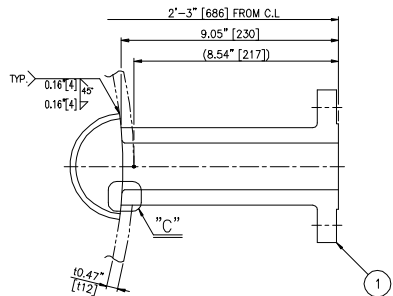
DETAIL OF AO
6"



DETAIL OF BE
6"



DETAIL OF BS
2"



DETAIL OF TT1
1 1/2"

KBR
ACCEPTANCE
FOR ENGINEERING USE

THIS DOCUMENT IS:

ACCEPTED (Code 1) ☒

ACCEPTED WITH COMMENTS (Code 2) ☐

NOT ACCEPTED (Code 3) ☐

NOT REVIEWED (Code 4) ☐

ACCEPTANCE DOES NOT RELIEVE SUPPLIER FROM FURNISHING MATERIAL IN CONFORMANCE WITH ORDER. REFER TO SDR-1 FOR FULL DEFINITION OF ACCEPTANCE CONDITIONS.

DISCIPLINE MD BY MPH DATE 28-OCT-11

FOR APPROVAL
2011.10.14
SUNGJIN GEOTEC CO., LTD.

ASME CODE STAMPED
WORK (U)

12. Oct. '11	REVISED AS COMMENTS	B.M. ENG	D.H. HYUN	H.C. JUNG
01. Sep. '11	REVISED AS COMMENTS	B.M. ENG	D.H. HYUN	H.C. JUNG
15. Jun. '11	REVISED AS COMMENTS	B.M. ENG	J.K. KIM	H.C. JUNG
27. Apr. '11	ISSUED FOR APPROVAL	B.M. ENG	J.K. KIM	H.C. JUNG
REV. DATE	DESCRIPTION	DRWN	CHKD.	APPD.

PROJECT: **Kemper County IGCC Unit 1 Project**

KBR
Engineering services by KBR Technical Services
TBPE Reg. No. F-2397

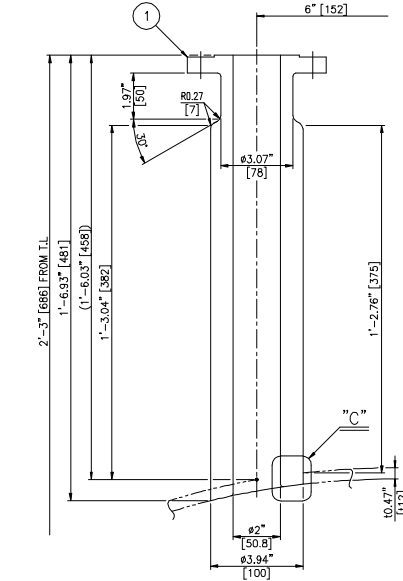
SOUTHERN COMPANY
Southern Company, Inc.

SUNGJIN
SUNGJIN GEOTEC CO., LTD
ULSAN, KOREA

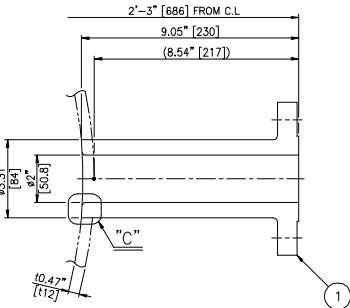
TITLE: DR1065/2065
AGR FLASH GAS KO DRUM
NOZZLE DETAIL (1/2)

ANGLE 3	SCALE	REV'D NO.	SETS	P.O. NO.:	MPC17984-0001	SHEET NO.
	N/S	2		SGT	SGT11-SP11-GR1065/2065-004	1 OF 2
B1	DRAWING NO.	MM79031		SGT	SGT11-SP11-GR1065/2065-004	11SP11

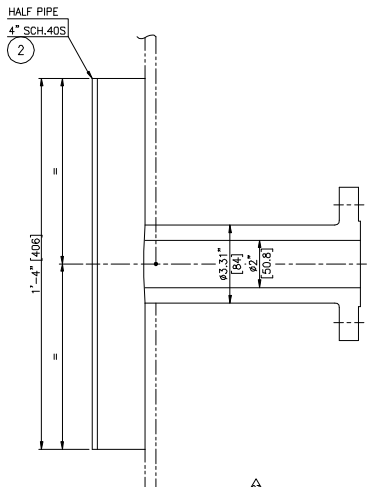
SGT JOB NO. : 11-SP-11



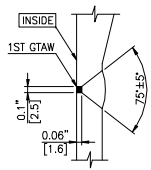
DETAIL OF AV
2"



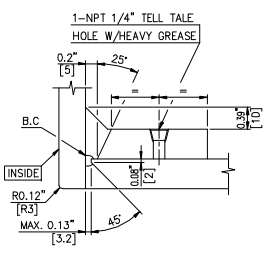
DETAIL OF LB1B
2" LT2B
2" LT3B
2" LT4B
2"



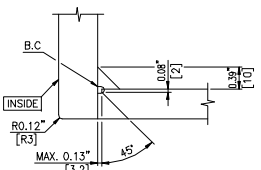
DETAIL OF LB1A
2" LT2A
2" LT3A
2" LT4A
2"



DETAIL "A"



DETAIL "B"



DETAIL "C"

MM79031 C

Plant: Kemper County
Southern Company Generation
SGT11-SP11-DR1065-2065-004 SH 1
PO: MPC17984-0001

SUNGJIN GEOTECH

Rev: 3