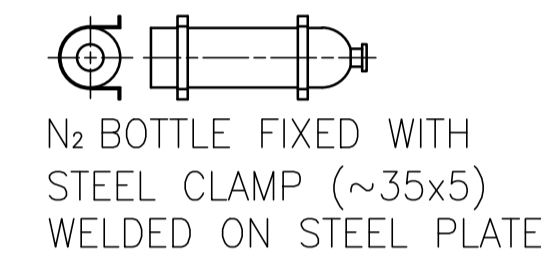
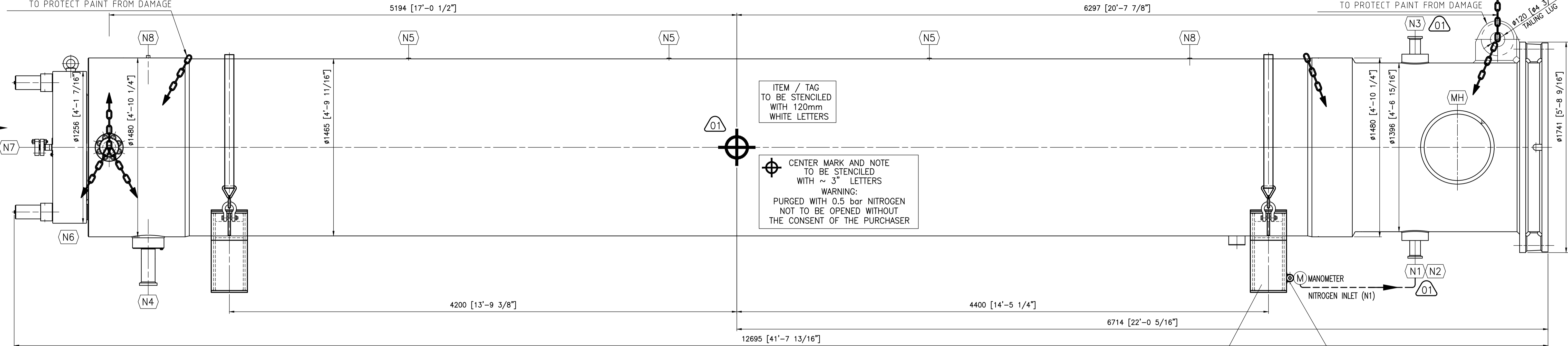


CLAMP DOWN THE VESSEL TO PREVENT MOVEMENT ON SHIPMENT AT MARKED POSITIONS ONLY. USE SOFT COVER TO PROTECT PAINT FROM DAMAGE

CLAMP DOWN THE VESSEL TO PREVENT MOVEMENT ON SHIPMENT AT MARKED POSITIONS ONLY. USE SOFT COVER TO PROTECT PAINT FROM DAMAGE

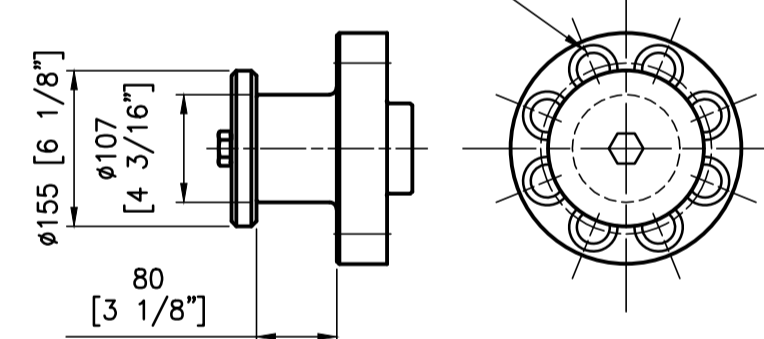


Scanned VC324711D

VESSEL IS POSTWELD HEAT-TREATED: NO WELDING ALLOWED

CABLES MUST FIT FOR THIS (1:7.5) LIFTING TRUNNIONS

MAX. LOAD/TRUNNION: 60 METRIC TONS
BOLT TORQUE: 1850 Nm [1365 ftlbf]
TO MARK WITH MIN. 8mm LETTERS

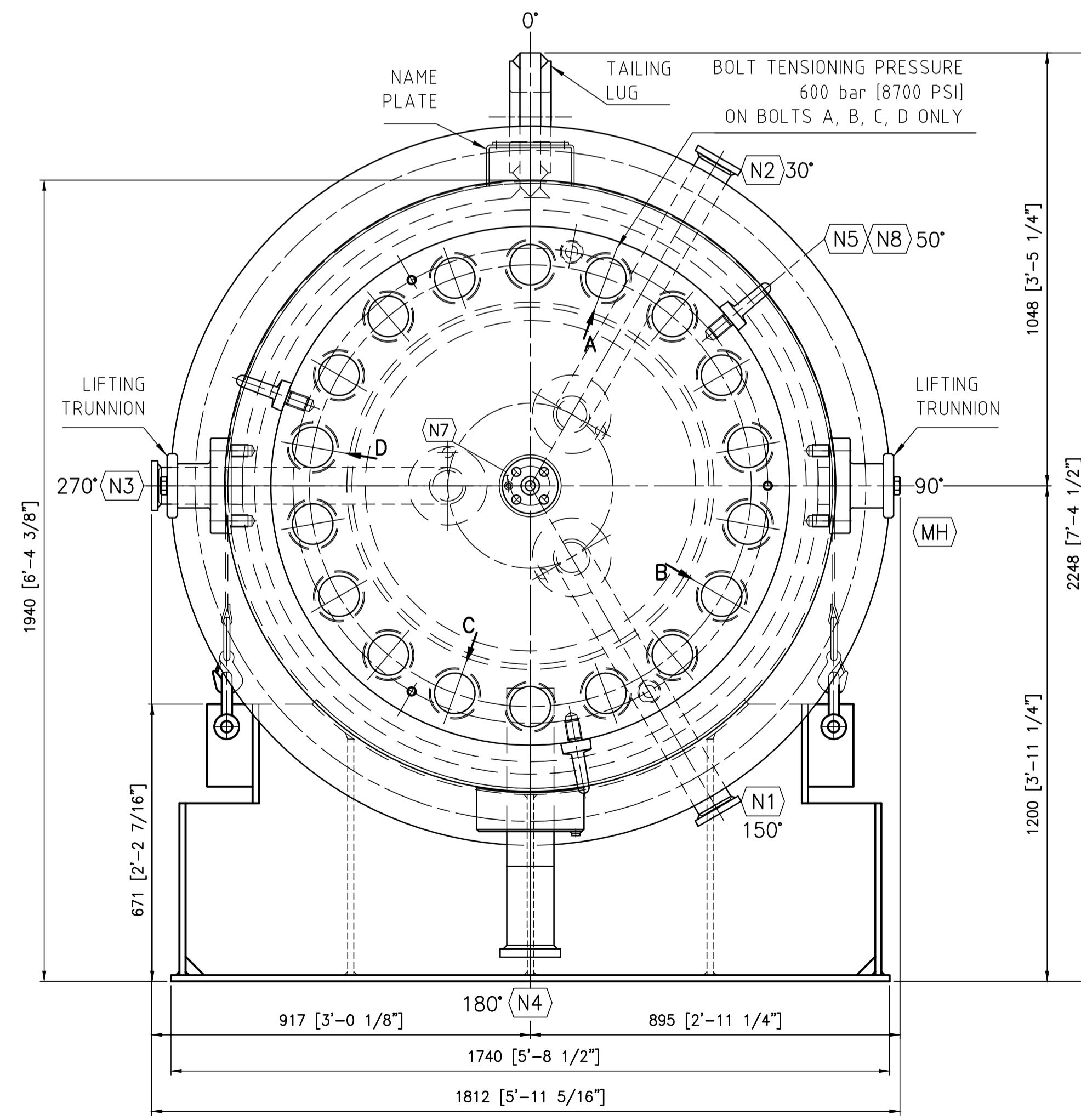


Stamicarbon bv
Sittard, The Netherlands

This document has been reviewed solely for incorporation of the pertinent specifications of Stamicarbon bv

reviewed by: GCortezon
date: Dec 18, 2017
comments: no comments

VIEW A (01)
FOR ORIENTATION OF ALL PARTS
SEE ONLY VIEW A



SHIPPING MARK

Consignee: FORTIGEN LCC GENEVA NEBRASKA USA

Port of loading: FOB ANTWERP, BELGIUM

Port of Destination: HOLD!

Consignor transport company: ...

Project Number: Z586

Contract Nr: S10387

Country of Origin: Austria

Name of Equipment: Urea Reactor R-201

Package Number: 1 of 1

Gross weight: 62000 kg [136687 lbs] (01) (02)

Net weight: 60000 kg [132277 lbs] (01) (02)

Dimensions (LxWxH): 1275x185x230cms (01)
[41'-10"x6'-0 13/16"x7'-6 9/16"]

Supplier: Schoeller Bleckmann Nitec GmbH, Austria

NOZZLE TABLE FOR PRESS. TEST & TRANSPORT		NPS	NP	FACING	ITEM FOR SBN ONLY
N1	1 NH ₃ INLET	3"	---	---	
N2	1 GAS INLET (CO ₂)	3"	---	---	
N3	1 LIQUID INLET (CARBAMATE)	3"	---	---	
N4	1 LIQUID / GAS OUTLET	4"	---	---	
N5	3 TEMPERATURE WELL	1/2"	---	NPT	
N6	1 MANWAY WITH COVER	32"	---	---	
N7	1 HP VENT (BLUNDED)	1 1/2"	PN325	LRJ	
N8	2 TEMPERATURE WELL	1/2"	---	NPT	

IND.	REVISION	DATE	NAME	SIG.	WELD. CHECK / DATE	SIG.
01	REV. ACC. TO STAC COMMENTS (NOZZLE ORIENT.)	2017-11-20	KROBATH			
00	PREMIERE EDITION	2017-11-20	STANGL			

PROJECT: FORTIGEN LCC GENEVA, NEBRASKA, USA SPARE PART LIST: ---

CLIENT: STAMICARBON CLIENT ORDER NO.: ---

CLIENT PROJ. SPEC. NO.: Z586 CLIENT DWG NO.: A4 86883

ADDITIONAL DOCUMENTS: ADI 175074 STRESS CALCULATION: CAL-175074

WELDING PLAN NO.: WP-175074-1 PART LIST: 175074-1-10

PROJ. ITEM: R-201 MFR'S SERIAL NO.: 8796 YEAR OF MANUFACTURE: 2018

SCHOELLER - BLECKMANN NITEC GMBH
Hauptstrasse 2, A-2630 TERNITZ
Tel: (+43) 2830 319-0 Fax: (+43) 2830 319-19
e-mail: sbn@christof-group.com Internet: http://www.christof-group.com

MFR'S ORDER NO.: 170070 EXT 175074 INT

NAME	DATE	SIGNATURE
DRAWN	2017-10-19	KROBATH
APPROVED	2017-10-19	STANGL

HOLES SHALL STRADDLE BOTH NATURAL-CENTERLINES

SCALE: DESCRIPTION UREA REACTOR TRANSPORT DWG. NO.: DWG-175074-10 REVISION: 02