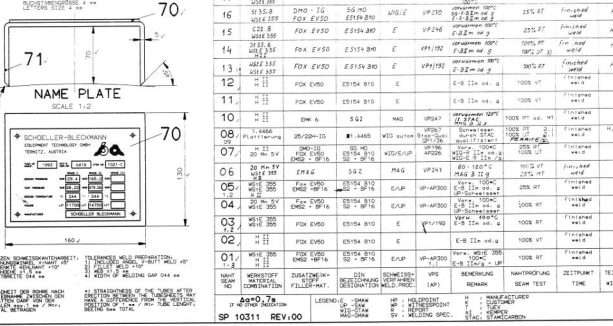
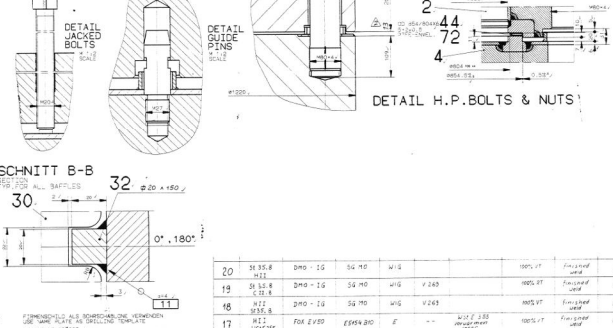
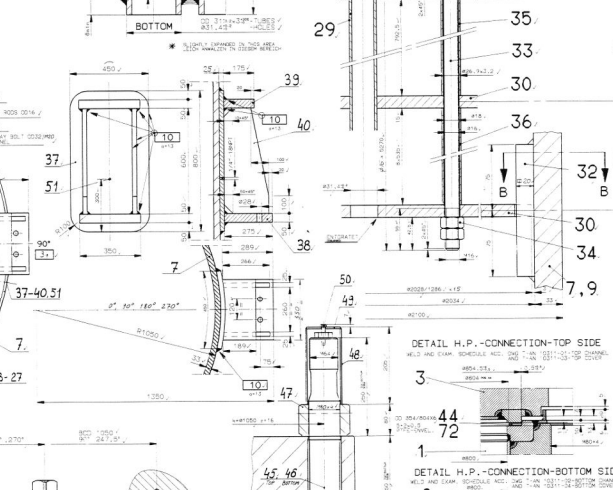
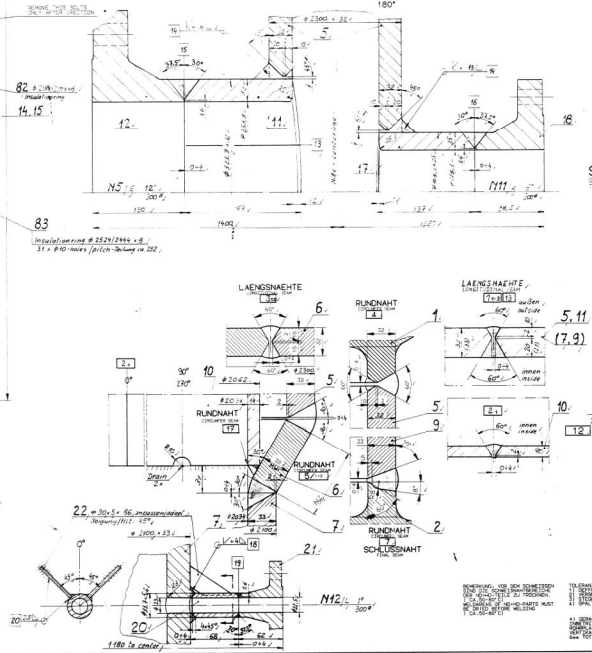


POS. ANZ.	BENENNUNG	DN	PN	DICHT	RHR. #	BEMERKUNG
N 1A	LIQUID INLET	6"	1000	---	00	100 100 28 28
N 2A	LIQUID OUTLET	8"	1000	---	00	100 100 28 28
N 3A	SEA WATER INLET	6"	1000	---	00	100 100 28 28
N 4A	SEA WATER INLET	10"	1000	---	00	100 100 28 28
N 5A	STEAM INLET	12"	1000	---	00	100 100 28 28
N 6A	2 COOLING WATER INLET	4"	1000	---	00	114 216 28 28
N 7A	1 INLET	1"	1000	---	00	33 74 5 40
N 8A	1 INLET	1"	1000	---	00	33 74 5 40
N 9	1 LEVEL GAUGE	1"	1000	---	00	100 100 28 28
N 10A	1 LEVEL GAUGE	50"	---	---	---	---
N 11A	1 SEA WATER INLET	6"	1000	---	00	100 100 28 28
N 12A	1 INLET	1"	1000	---	00	33 74 5 40
N 13A	1 CONDENSATE INLET	6"	1000	---	00	100 100 28 28
N 14	1 MANHOLE	---	---	---	---	---
N 15	1 MANHOLE	---	---	---	---	---

ANZAHL	GRÖÖÖ	TÖV: STAMICARBON-IFI
1	108900	123600

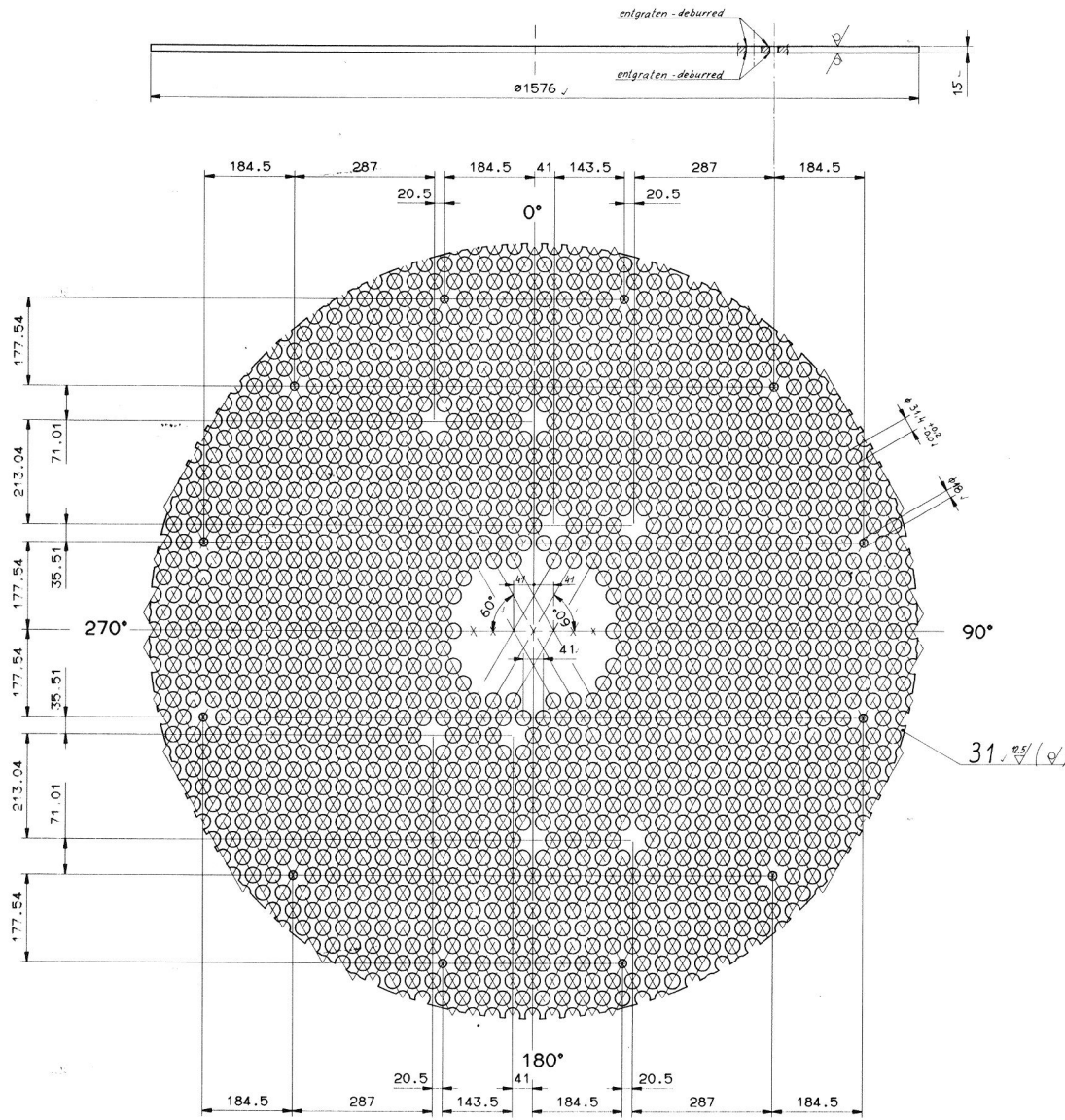
BEZUGSGRÖÖÖ	RAUM I	RAUM II
...



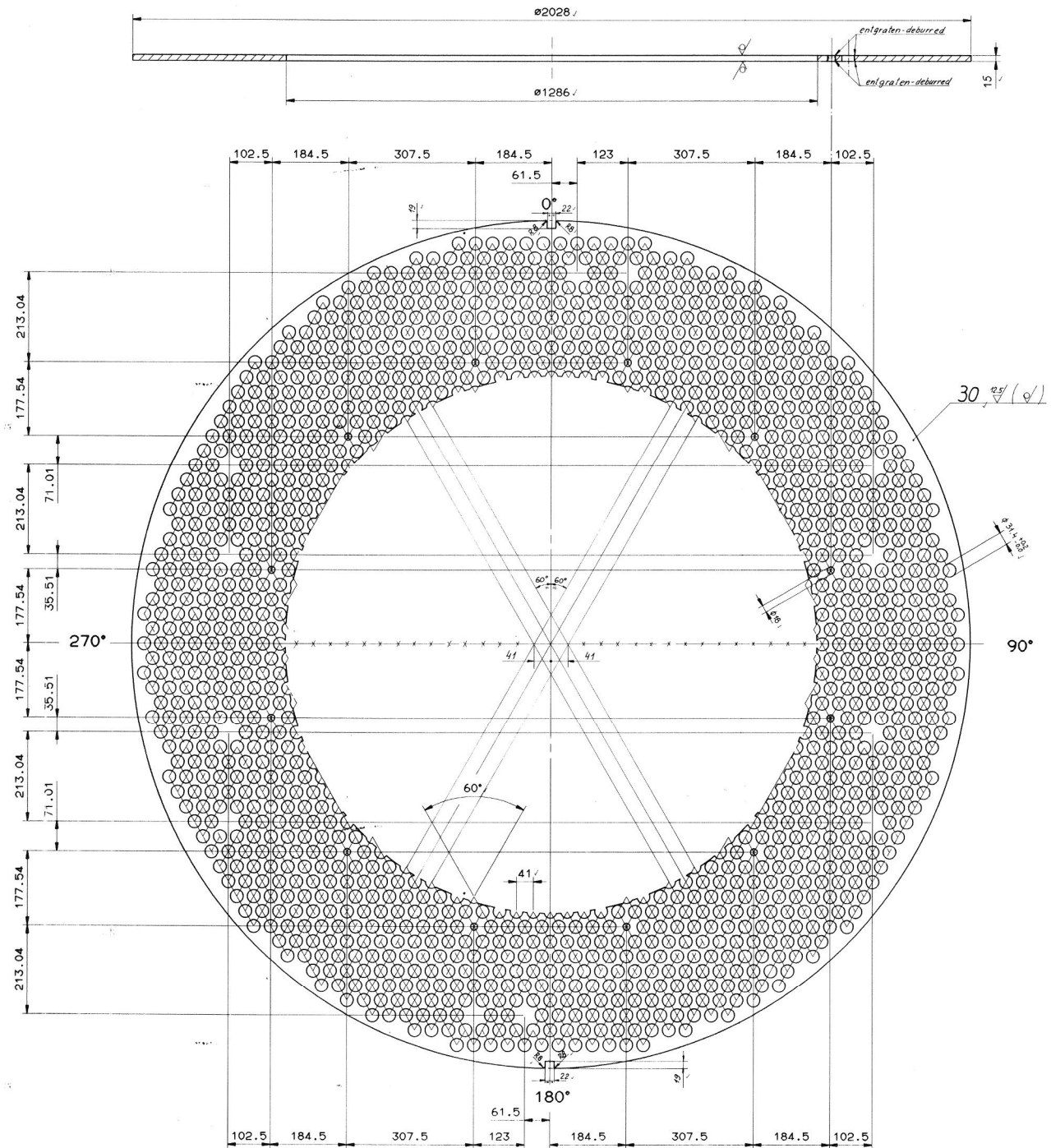
NO.	DATE	REVISION	BY	CHK.	APP.	DESCRIPTION
1

NO.	DATE	REVISION	BY	CHK.	APP.	DESCRIPTION
1

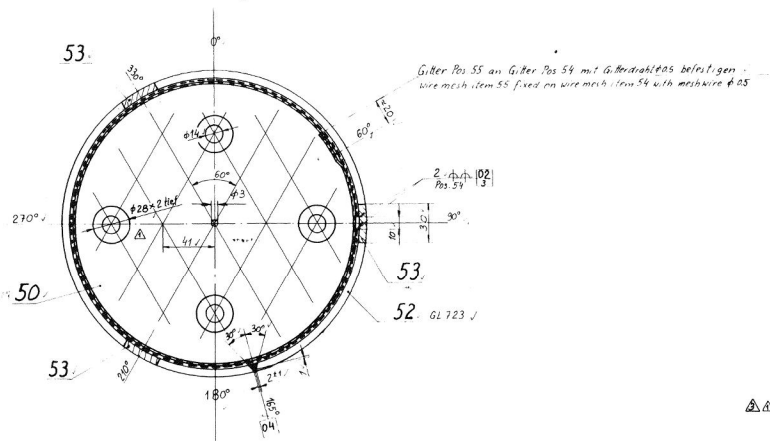
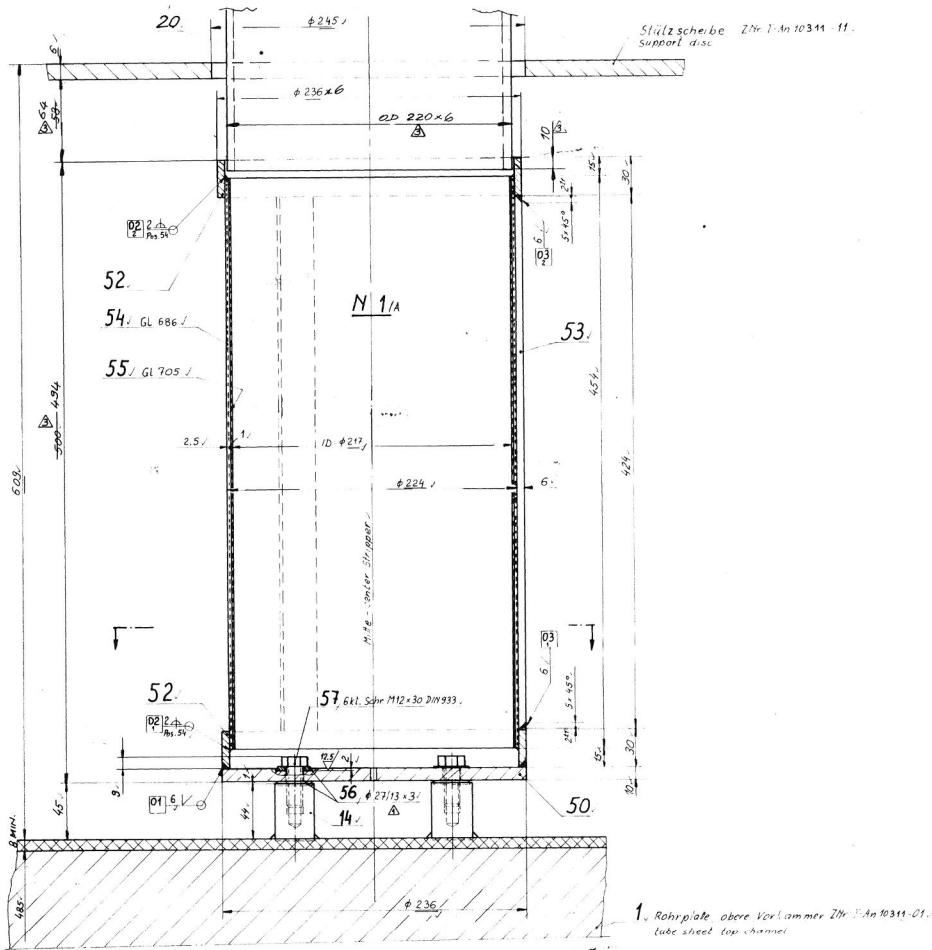
SCHÖLLER-BLOCKMANN APPARATE-TECHNIK GMBH
H.P. STRIPPER T-AN10311
SP 10311 REV.00



INDEX	ORIGINAL ISSUE	1998 13	SCHE	<i>Solo</i>	GERP. DATUM CHECK DATE	STB.
	ÄNDERUNG REVISION	DATUM DATE	NAME NAME	STG.	SCHEISS/TECH. GERP. WELDING CHECK	
DARLEGENDEISE UNTERLAGEN ADDITIONAL DOCUMENTS		JOB DOC. INDEX 215408				
FESTIGKEITBERECHNUNG STRESS CALCULATION	T-AN10311-B	STOCKLISTE PART LIST		215409		
STANDFESTIGKEITSNACHWEIS RELIABILITY ANALYSIS		RESERVE/TEILSTOCKLISTE SPARE PART LIST		215414		
KUNDE CLIENT	IRISH FERTILIZER IND. LTD IFI	KUNDEN AUFTRAGS Nr. 1 CLIENT ORDER NO. 1		P.O. X 210033/MFH		
KUNDEN PROJ. SPEZ. Nr. 1 CLIENT PROJ. SPEZ. NO. 1	STAC 66778/A	KUNDEN ZEICHNUMMER Nr. 1 CLIENT DRAW. NO. 1				
PROJ. POS. 1 PROJ. ITEM	1021-C	FABR. Nr. 1 MFG'S SERIAL NO. 1	6416	BALLHUR YEAR OF MANUFACTURE	1993	
<div style="display: flex; justify-content: space-between;"> <div> <p>123</p> <p>DESE ABWICHE MITH BEI ANNAHE RESERVOIR GERÜCKT! THIS DIMENSION WILL BE ESSENTIALLY OUTSIDE!</p> </div> <div> <p>UNTERSCHREIBEN SIGNATURE</p> <p>WELDMANUAL/GERÜCKT WELDING CHECK</p> </div> </div>						
<p>SCHÖLLER-BECKMANN APPARATE-TECHNIK - GMBH</p>				<p>GÜLTIG FÜR AUFTRAG MFG'S ORDER NO.</p> <p>512853</p>		
1992 GEZEICH. GEPROBT	NAME MALLNER	DATUM 06-25	STG. <i>Wimmer</i>	<p>REVISION</p> <p>00</p>		
MASSTAB SCALE	BENENNUNG DESCRIPTION		ZD. Nr. 1 DWG. NO. 1		<p>POS. : 31 UMLENKBLECH RAFFLE-DISC</p> <p>T-AN10311-18</p>	



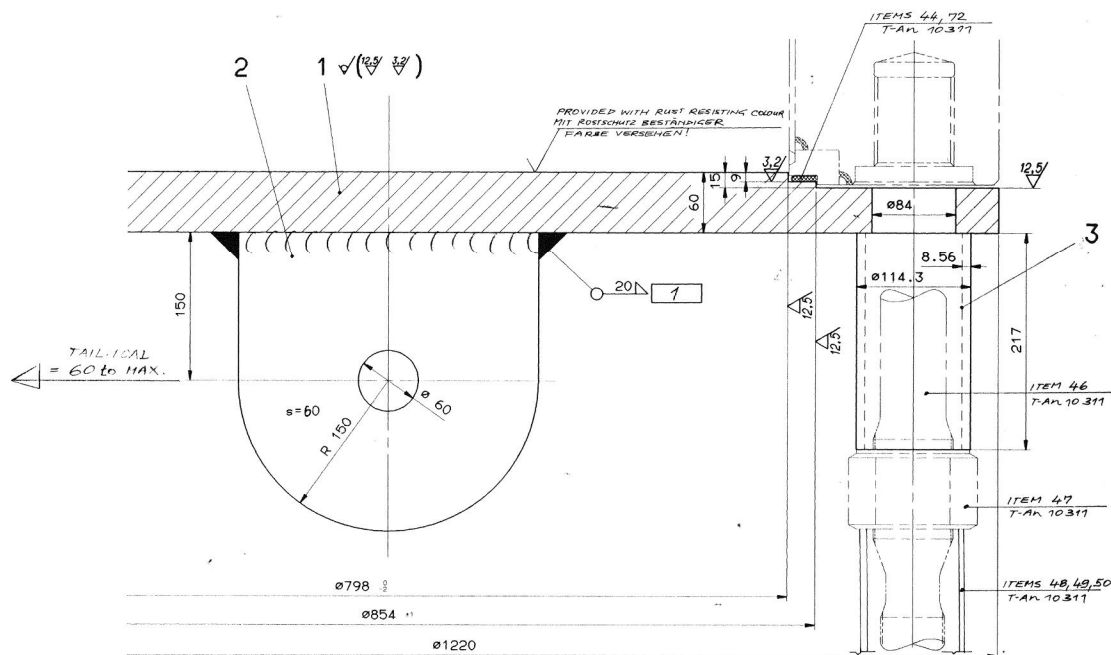
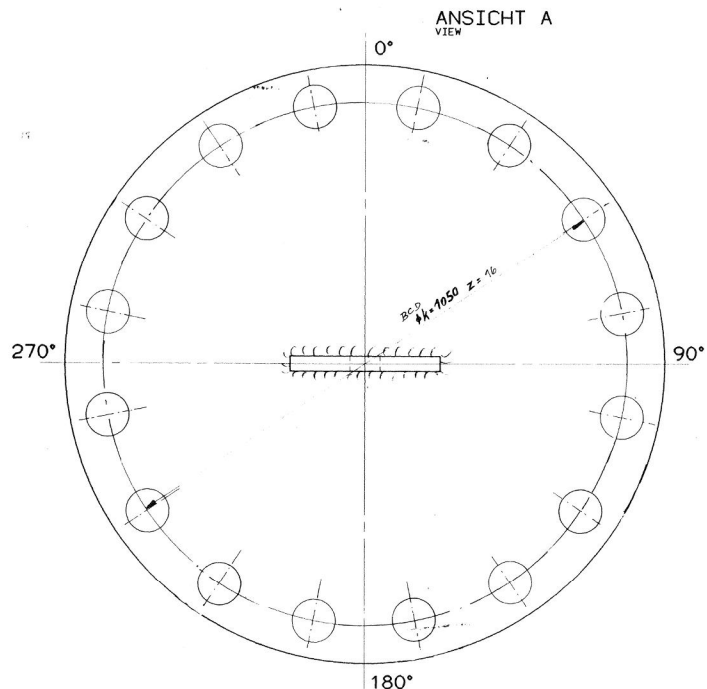
0 ORIGINAL ISSUE		9006 25	SCHWE	Schro		
INDEX	DATE	DATE	NAME	SIG.	DEPR. DATE	SIG.
INDEX	DATE	DATE	NAME	SIG.	DEPR. DATE	SIG.
DAZUGEHÖRIGE UNTERLAGEN		JOB DOC. INDEX 215408				
ADDITIONAL DOCUMENTS						
FESTIGKEITRECHNUNG	T-AN10311-B	STÜCKLISTE		215 409		
STANDFESTIGKEITSNACHWEIS		REPARTEILSTÜCKLISTE		215 4 44		
KUNDE	IRISH FERTILIZER IND. LTD	KUNDEN AUFTRAGS-Nr.:				
KUNDEN PROJ. SPEZ. Nr.:	IFI	KUNDEN AUFTRAGS-Nr.:		P.O. X 210033 / MAYIE		
KUNDEN PROJ. SPEZ. Nr.:	STAC 66378/A	KUNDEN ZEICHNUNGS-Nr.:				
PROJ. POS.:	1021-C	FABR. Nr.:	6416	BALLMÄß	1993	
PROJ. STW.:		WERK'S SERIAL. Nr.:		HERSTELL. JAHR		
[123] DIESE ANMAßE WERDEN MIT ABWÄHRE BEZÜCKSICHTIGT		[123] DIESE ANMAßE WERDEN MIT ABWÄHRE BEZÜCKSICHTIGT		[123] DIESE ANMAßE WERDEN MIT ABWÄHRE BEZÜCKSICHTIGT		
SCHÖLLER-BLECKMANN APPARATE-TECHNIK GMBH		SCHÖLLER-BLECKMANN APPARATE-TECHNIK GMBH		SCHÖLLER-BLECKMANN APPARATE-TECHNIK GMBH		
1992	NAME	DATUM	SIG.	GÜLTIG FÜR AUFTRAG		
GEZEICHN.	MALLNER	06-28		WERK'S ORDER NO		
GEPROBT	VENNER	08-23		WERK'S SERIAL. NO		
HAUPTSTAB		NACHRICHTUNG H.P. St. 1021-C		ZS. Nr.:		
SCALE		POS. : 30		REVISION		
1:5		UMLLENBLECH		00		
		BAFFLE-DOUGHNUT		512853		
				T-AN10311-17		



NO	WELDNUMMER	WELDTYP	WELDMATERIAL	WELDFORM	WELDLINIE	WELDTIEFE	WELDTYP	WELDTYP	WELDTYP	WELDTYP	WELDTYP	WELDTYP	WELDTYP	WELDTYP	WELDTYP	WELDTYP	WELDTYP	WELDTYP	WELDTYP	WELDTYP
04	14466	25/22 H-SG	Comp name: TEW	WIG	1/38	Interpass Temp max 150°C	100% VT	F.W.	H											
03	44466	25/22 H-SG	Comp name: TEW	WIG	1/38	Interpass Temp max 150°C	100% VT	F.W.	H											
1.2	44466	25/22 H-SG	Comp name: TEW	WIG	1/38	Interpass Temp max 150°C	100% VT	F.W.	H											
02	44466	25/22 H-SG	Comp name: TEW	WIG	1/38	Interpass Temp max 150°C	100% VT	F.W.	H											
1.2.3	44466	25/22 H-SG	Comp name: TEW	WIG	1/38	Interpass Temp max 150°C	100% VT	F.W.	H											
01	44466	25/22 H-SG	Comp name: TEW	WIG	1/38	Interpass Temp max 150°C	100% VT	F.W.	H											
01	44466	25/22 H-SG	Comp name: TEW	WIG	1/38	Interpass Temp max 150°C	100% VT	F.W.	H											

ITEM 51 - DELETED / DIM. CHANGES AS NOTED
 03 ACC. STAC. MAX 13270 STAC 2258 DAT. 3-NOV-92 (NOZZLE N1/A MODIFIED) 32.11.90
 VPS-NO CHANGED FROM 442 TO 4466 32.08.92 NUMBER 101
 01 2 gaskets for item 57, seam No.01 32.01.92 Walker N.L.
 01 100% V.T. 32.01.92 Walker N.L.

JOB DOK. INDEX 215408
 I-AN10311-B 215410
 215414
 IRISH FERTILIZER IND. LTD
 PO. X210083/MAY 90
 KUNDEN
 1021-C 6416 1993
 SCHÖLLER-BLECKMANN GMBH
 1992
 H.P. Stripper 1021-C
 512853
 DISTRIBUTORBOX NOZZLE N1/A
 T-AN10311-14
 DWG-C-1021-C-104



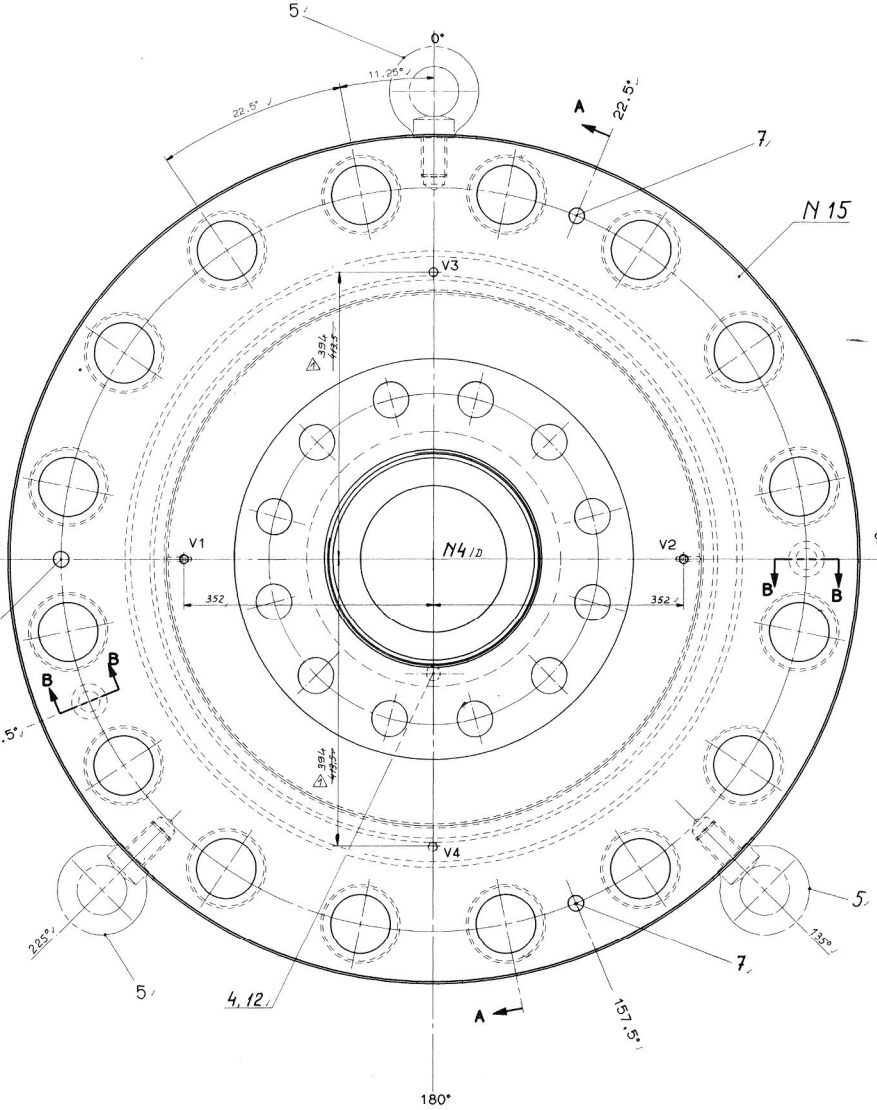
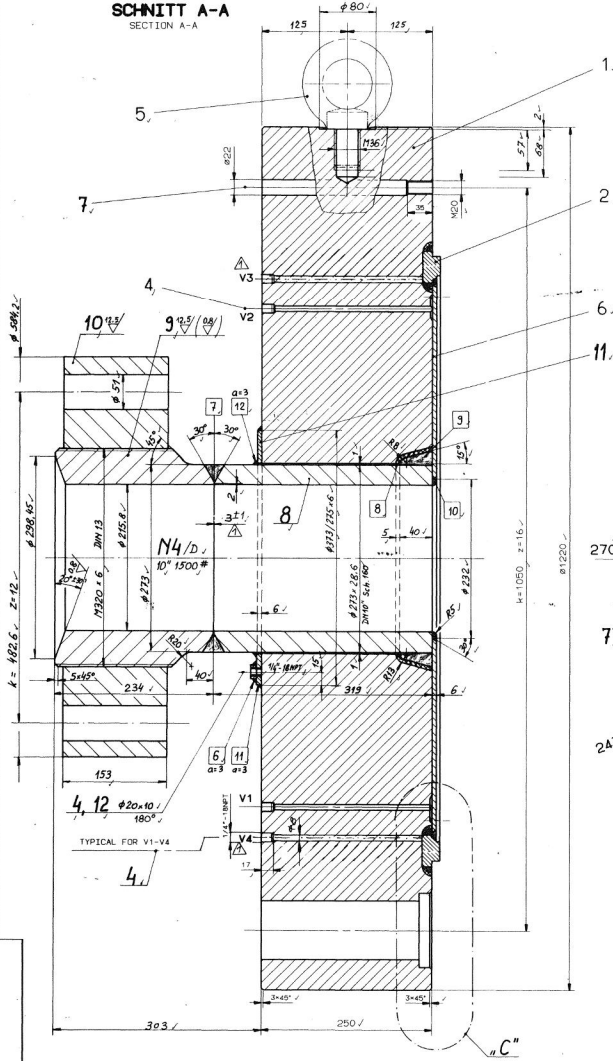
REMARK :
DUMMY COVER LUG : 60 to MAX.
ONLY FOR HORIZONTAL LIFTING AND TAILING OF THE VESSEL
AT BOTTOM SIDE FOR THE INSTALLATION IN THE FRAME!

BEWEHRUNG:
HEBEGASSE F. HEBEDECKEL : 60 to MAX.
NUR FÜR HORIZONTALS ANHEBEN UND NÄHGFÜHREN
DES BEHÄLTERS AUF DER UNTERSEITE FÜR DIE
MONTAGE IM STAHLGERÜST!

0	ORIGINAL ISSUE	60066	WINNER			
WORK	DATE	NAME	SIG.	DEPR. DATE	DEPR. DATE	SIG.
DAILY SERVICE UNDERLAIN			JOB DOC. INDEX 215408			
FESTIGKEITSBERECHNUNG			T-AN10311-B	STÜCKLISTE 215 573		
STANDFESTIGKEITSMACHEWIS				RESERVIERTE STÜCKLISTE 215414		
KUNDE IRISH FERTILIZER IND. LTD				KUNDEN AUFTRAGS Nr. 1		
KUNDE PROJ. SPEZ. Nr. 1				KUNDEN ZEICHNUNG Nr. 1		
KUNDE PROJ. SPEZ. Nr. 2			STAC 66778/A	KUNDEN ZEICHNUNG Nr. 2		
PROJ. DOC.	1021-C	FABR. Nr.	6416	RELEASED	YEAR OF MANUFACTURE	1993
SCHÖTLER-BLECKMANN						
ANTISCHWÄRMELICHTUNG						
1992	NAME	DATE	SIG.	GÜLTIG FÜR AUFTRAG		
GEZEICH.	WINNER	08.26	Winner	512853		
DEPRIT						
MASSTAB	RECHNUNG	H.P. STRIPPER 1021-C				75. Nr.
1:2,5	DESCRIPTION	HEBEDECKEL				DWG. Nr.
		DUMMY COVER				
						REVISION 00
						T-AN10311-08

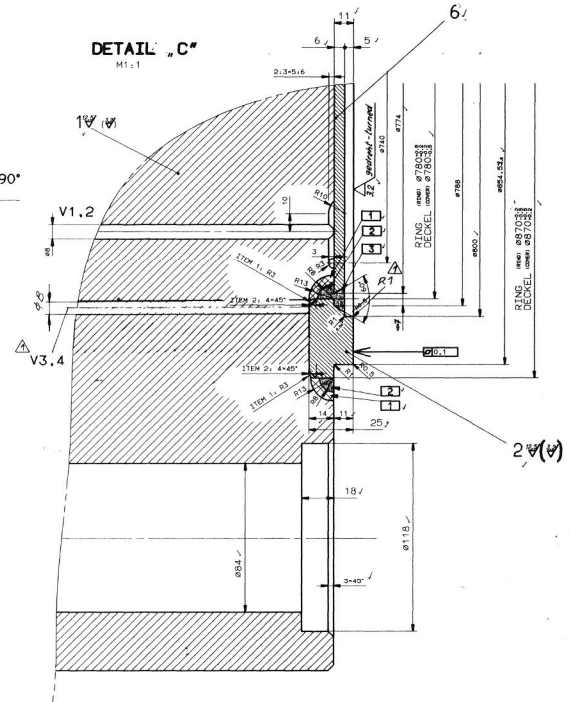
1	H I I I H I I	Fox EV 50 EPK 6	VERZ. MATERIAL	VERZ. SITUATION	QUALIF. WELD. PROC.	WFS (APT)	80°C VORWÄRMEN	100% PT	FINISHED WELD	H	MANUFACTURER	SCALE
											MANUFACTURER	1:2,5
											MANUFACTURER	
											MANUFACTURER	
											MANUFACTURER	
											MANUFACTURER	

SCHNITT A-A
SECTION A-A

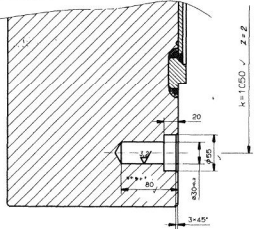


Für die Orientierung der Teile u. Bohrungen gilt nur der Grundriß.
For orientation all parts and holes see only top view.

DETAIL "C"
M1:1



SCHNITT B-B
SECTION B-B
90° 1247.5°



NO.	QTY	DESCRIPTION	UNIT	REVISION	DATE	BY	CHKD.	APPR.
12	1.4466	25/22H-50 Comp. 72W	E					
1A	1.4466	25/22H-50 Comp. 72W	E					
10	1.4466	25/22H-50 Comp. 72W	E					
09	1.4466	25/22H-50 Comp. 72W	E					
08	1.4466	25/22H-50 Comp. 72W	E					
07	1.4466	25/22H-50 Comp. 72W	E					
06	1.4466	25/22H-50 Comp. 72W	E					
03	1.4466	25/22H-50 Comp. 72W	E					
02	1.4466	25/22H-50 Comp. 72W	E					
01	1.4466	25/22H-50 Comp. 72W	E					

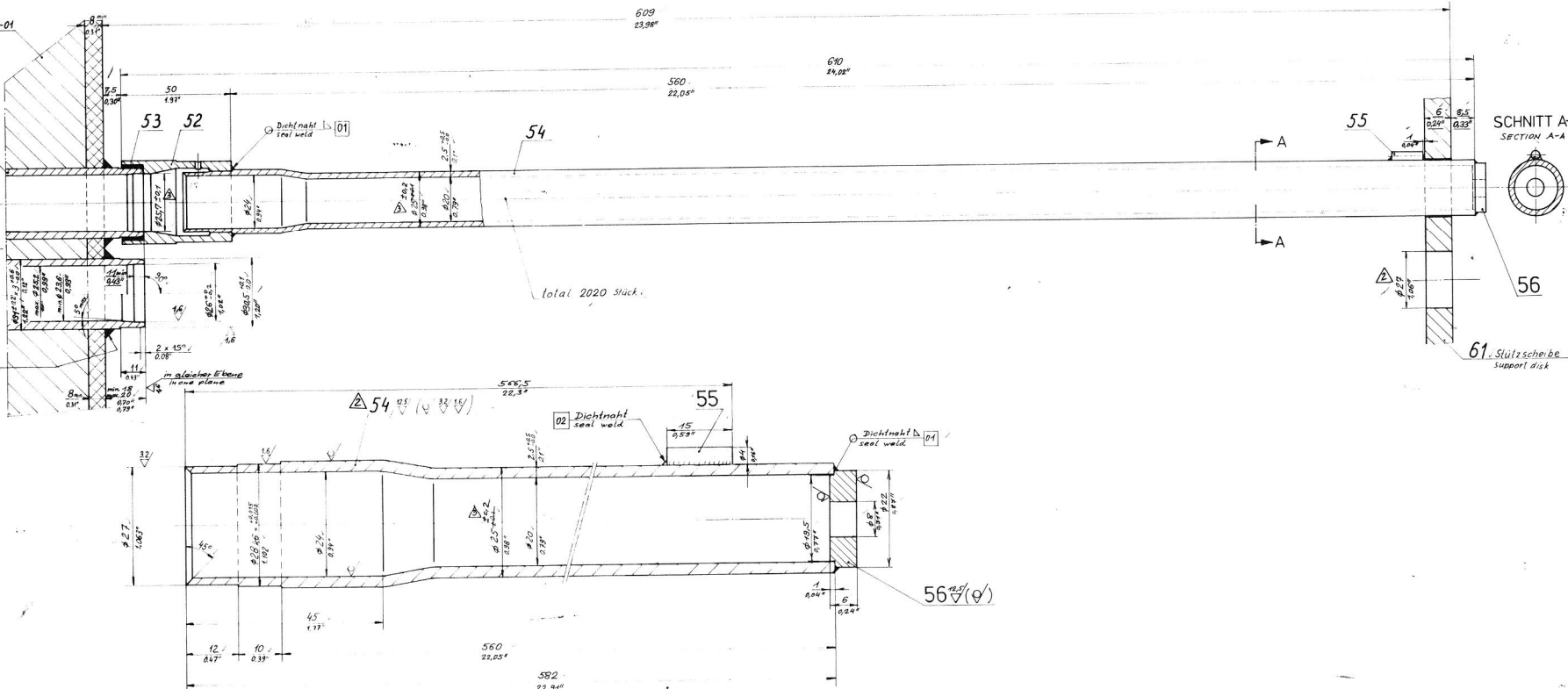
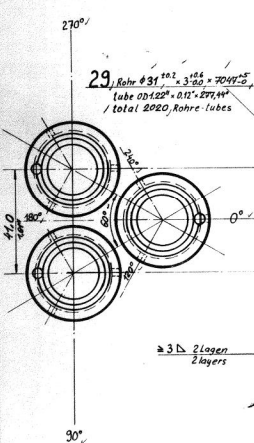
NO.	QTY	DESCRIPTION	UNIT	REVISION	DATE	BY	CHKD.	APPR.
12	1.4466	25/22H-50 Comp. 72W	E					
1A	1.4466	25/22H-50 Comp. 72W	E					
10	1.4466	25/22H-50 Comp. 72W	E					
09	1.4466	25/22H-50 Comp. 72W	E					
08	1.4466	25/22H-50 Comp. 72W	E					
07	1.4466	25/22H-50 Comp. 72W	E					
06	1.4466	25/22H-50 Comp. 72W	E					
03	1.4466	25/22H-50 Comp. 72W	E					
02	1.4466	25/22H-50 Comp. 72W	E					
01	1.4466	25/22H-50 Comp. 72W	E					

NO.	QTY	DESCRIPTION	UNIT	REVISION	DATE	BY	CHKD.	APPR.
12	1.4466	25/22H-50 Comp. 72W	E					
1A	1.4466	25/22H-50 Comp. 72W	E					
10	1.4466	25/22H-50 Comp. 72W	E					
09	1.4466	25/22H-50 Comp. 72W	E					
08	1.4466	25/22H-50 Comp. 72W	E					
07	1.4466	25/22H-50 Comp. 72W	E					
06	1.4466	25/22H-50 Comp. 72W	E					
03	1.4466	25/22H-50 Comp. 72W	E					
02	1.4466	25/22H-50 Comp. 72W	E					
01	1.4466	25/22H-50 Comp. 72W	E					

NO.	QTY	DESCRIPTION	UNIT	REVISION	DATE	BY	CHKD.	APPR.
12	1.4466	25/22H-50 Comp. 72W	E					
1A	1.4466	25/22H-50 Comp. 72W	E					
10	1.4466	25/22H-50 Comp. 72W	E					
09	1.4466	25/22H-50 Comp. 72W	E					
08	1.4466	25/22H-50 Comp. 72W	E					
07	1.4466	25/22H-50 Comp. 72W	E					
06	1.4466	25/22H-50 Comp. 72W	E					
03	1.4466	25/22H-50 Comp. 72W	E					
02	1.4466	25/22H-50 Comp. 72W	E					
01	1.4466	25/22H-50 Comp. 72W	E					

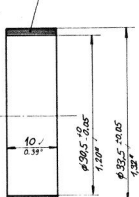
Rohrplatte - obere Vorkammer ZN: T-AN10311-01
tube sheet - top channel

29) Rohr Ø 31,1^{+0,02} x 3,00 x 7047,0^{-0,2}
tube Ø 31,1^{+0,02} x 0,12 x 7047,0^{-0,2}
/ total 2020 Rohre-tubes

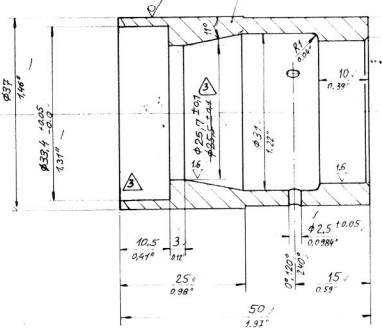


total 2020 Stück.

PTFE
53) 33



52) 33 (16) 33



Lochkanten scharfkantig, ohne Grat, 0°/120°/240°
hole edges sharp without burrs

609
23,98"

610
24,02"

560
22,05"

SCHNITT A-A
SECTION A-A

56

61) Stützscheibe
support disk

56) 45 (φ)

1) ALL DIMENSIONS UNLESS OTHERWISE SPECIFIED
2) ALL DIMENSIONS ARE IN MILLIMETERS
3) ALL DIMENSIONS ARE TO BE TAKEN TO THE CENTER UNLESS OTHERWISE SPECIFIED
4) ALL DIMENSIONS ARE TO BE TAKEN TO THE SURFACE UNLESS OTHERWISE SPECIFIED
5) ALL DIMENSIONS ARE TO BE TAKEN TO THE CENTER UNLESS OTHERWISE SPECIFIED
6) ALL DIMENSIONS ARE TO BE TAKEN TO THE SURFACE UNLESS OTHERWISE SPECIFIED
7) ALL DIMENSIONS ARE TO BE TAKEN TO THE CENTER UNLESS OTHERWISE SPECIFIED
8) ALL DIMENSIONS ARE TO BE TAKEN TO THE SURFACE UNLESS OTHERWISE SPECIFIED
9) ALL DIMENSIONS ARE TO BE TAKEN TO THE CENTER UNLESS OTHERWISE SPECIFIED
10) ALL DIMENSIONS ARE TO BE TAKEN TO THE SURFACE UNLESS OTHERWISE SPECIFIED

REV. ACC. STAC-TRANSIT 7805	93.08.03	
STAC Z-BSE DAT. FROM 79, 1993 8048 MARK		
REV. ACC. STAC-FAX DAT. 93.01.28 930802	WÄRMER	
SB-REMARK ON ITEM 53,56	92.08.23	WÄRMER
ADDED, SO AS MARK	92.08.25	WÄRMER
Original issue		

DATE	DATE	DATE	DATE	DATE
1993				

JOB DOK. INDEX 215408

T-AN10311-B

IRISH FERTILIZER IND. LTD
IFI

STAC 66778/A

1021-C

6416

1993

SCHÖELLER-BLECKMANN GMBH

512853

H.P. Stripper 1021-C

FLÜSSIGKETTVERTEILER

REVISION 03

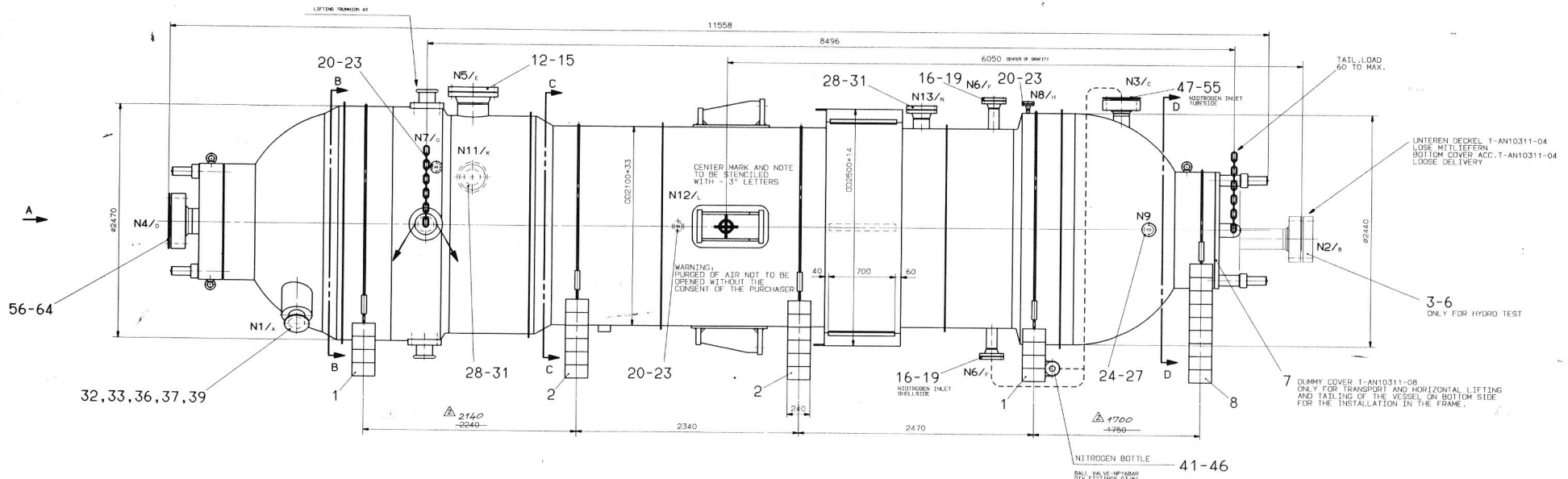
T AN 10311-07

02	14466	25122H	1.4465	WIG		100% VT	F.N.	H
01	14468	alt. none						
	14466	25122H	1.4465	WIG		10% PT 100% VT	F.N.	H
	14466	alt. none						

Δa=0,7s

T-AN10311-07

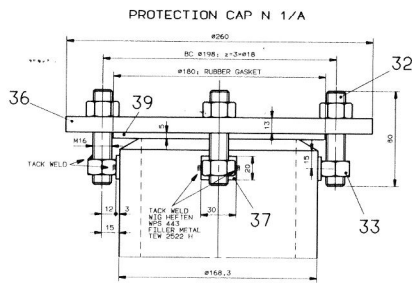
F.N.: fertige Naht
finished seam



ITEM N° 1021-C
 NET.WT. 109 T
 GROSS.WT. 112 T
 L×W×H. 1156×284×307cm
 TRANSP.VOLUME ca.100,08 m³
 PROJECT NR...STAC 66778/A

HART-HOLZSAETTEL
 STUETZENEFENNUNGEN MIT DICHTUNG UND BLINDDIECKEL
 VERSCHLOSSEN.
 GEWINDEANSCHLUESSE MIT GFWINDENSTOPFEN VERSCHLOSSEN.
 MANTEL UND ROHRSCHLIESS MIT G,3 bar max.7 psig
 STICKESTOFFFUELLUNG.

WOODEN SADDLES,
 ALL NOZZLE OPENINGS CLOSED WITH PROTECTIVE
 GASKETS AND STEEL COVERS.
 THREADED CONNECTIONS ARE PLUGGED.
 SHELL AND TUBE SIDE WITH 0,3 bar max.7 psig
 NITROGEN FILLING.



NACH DER DRUCKPROBE
 AFTER PRESSURE TEST

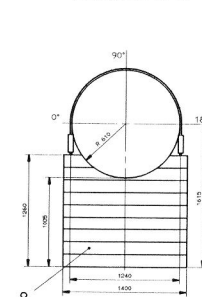
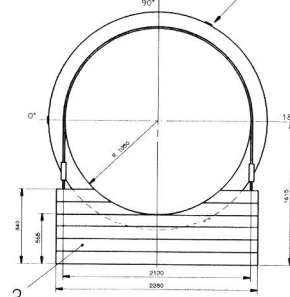
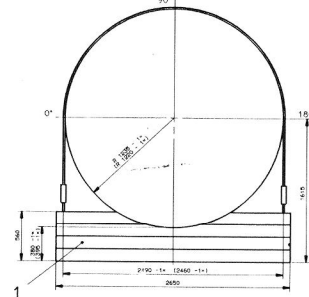
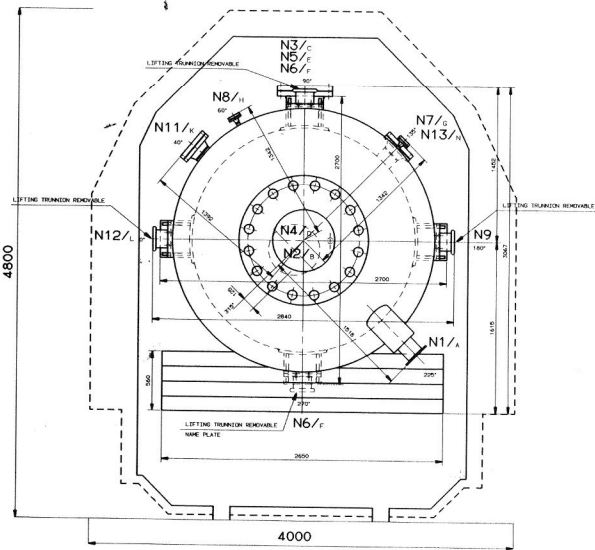
CONT. WELD
 B 15
 SMAW
 WPS 474
 FILLED METAL
 FOR EPOXY
 (E 7018)

ANSICHT A
 VIEW A

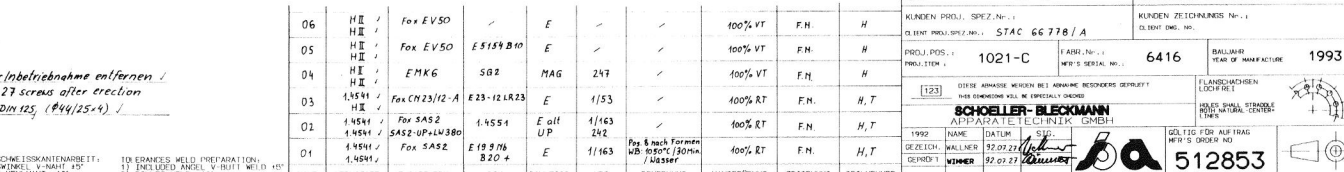
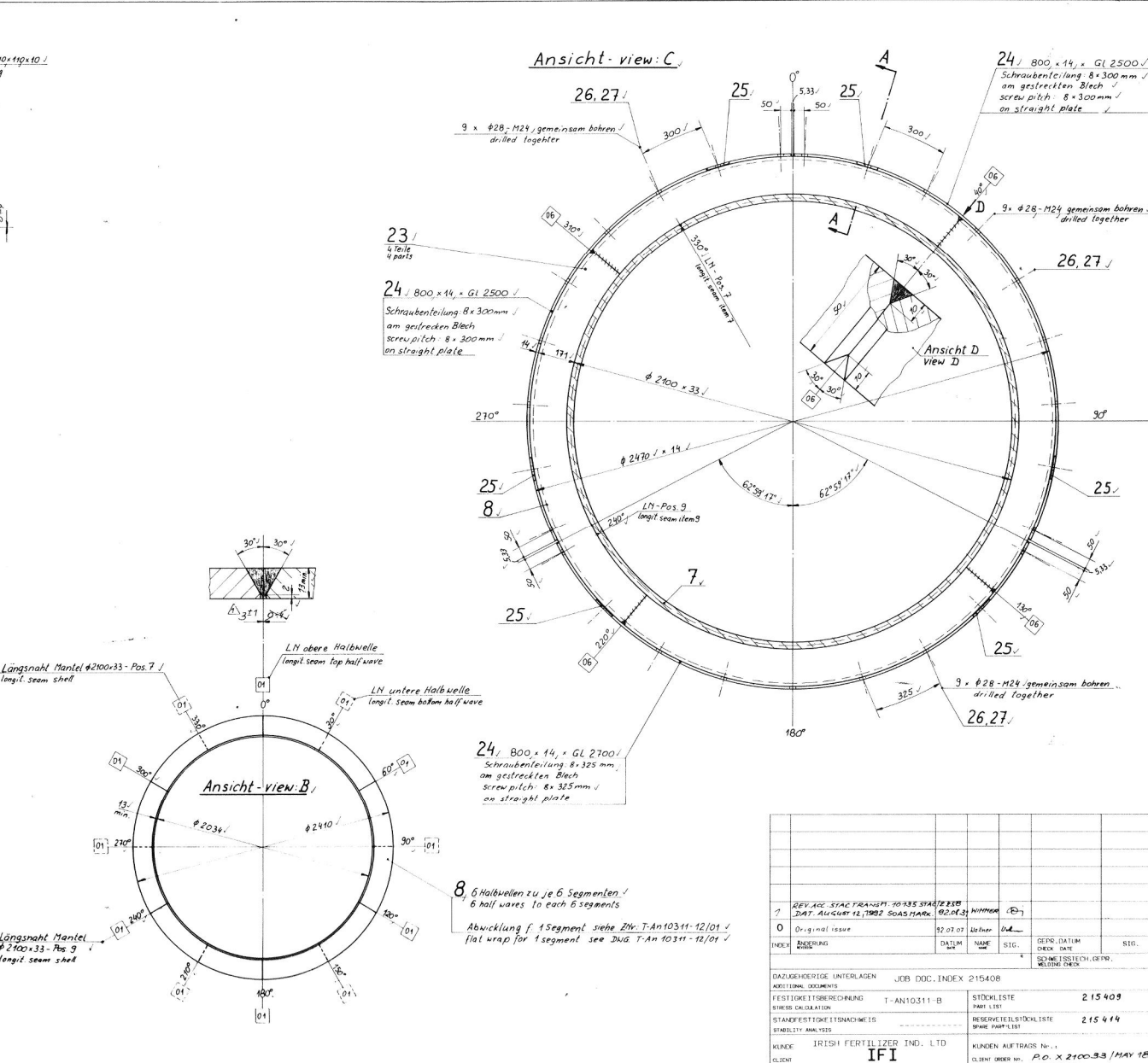
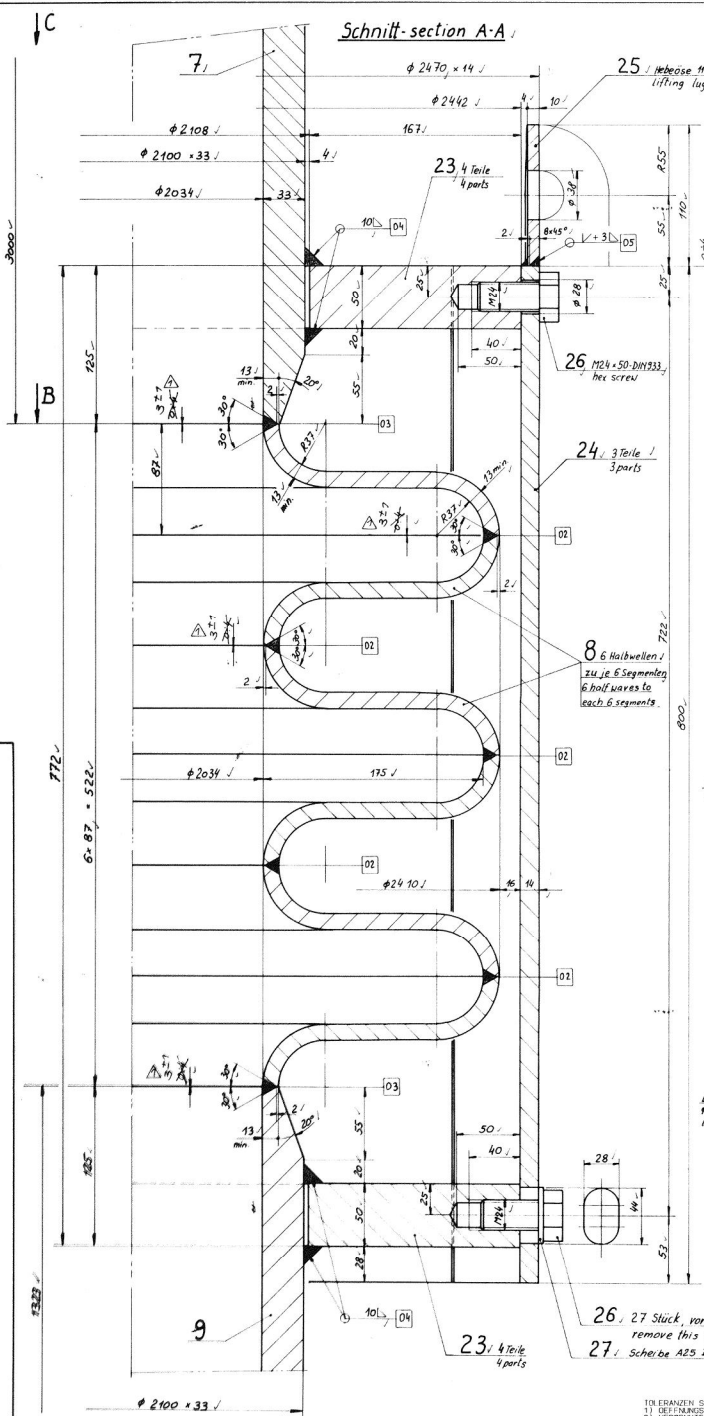
SCHNITT B-B
 SECTION B-B

SCHNITT C-C
 SECTION C-C

SCHNITT D-D
 SECTION D-D



02	REV. BY	22	REV. BY	22
01	BY	22	BY	22
03	ISSUAL	22	ISSUAL	22
04	ISSUAL	22	ISSUAL	22
05	ISSUAL	22	ISSUAL	22
06	ISSUAL	22	ISSUAL	22
07	ISSUAL	22	ISSUAL	22
08	ISSUAL	22	ISSUAL	22
09	ISSUAL	22	ISSUAL	22
10	ISSUAL	22	ISSUAL	22
11	ISSUAL	22	ISSUAL	22
12	ISSUAL	22	ISSUAL	22
13	ISSUAL	22	ISSUAL	22
14	ISSUAL	22	ISSUAL	22
15	ISSUAL	22	ISSUAL	22
16	ISSUAL	22	ISSUAL	22
17	ISSUAL	22	ISSUAL	22
18	ISSUAL	22	ISSUAL	22
19	ISSUAL	22	ISSUAL	22
20	ISSUAL	22	ISSUAL	22
21	ISSUAL	22	ISSUAL	22
22	ISSUAL	22	ISSUAL	22
23	ISSUAL	22	ISSUAL	22
24	ISSUAL	22	ISSUAL	22
25	ISSUAL	22	ISSUAL	22
26	ISSUAL	22	ISSUAL	22
27	ISSUAL	22	ISSUAL	22
28	ISSUAL	22	ISSUAL	22
29	ISSUAL	22	ISSUAL	22
30	ISSUAL	22	ISSUAL	22
31	ISSUAL	22	ISSUAL	22
32	ISSUAL	22	ISSUAL	22
33	ISSUAL	22	ISSUAL	22
34	ISSUAL	22	ISSUAL	22
35	ISSUAL	22	ISSUAL	22
36	ISSUAL	22	ISSUAL	22
37	ISSUAL	22	ISSUAL	22
38	ISSUAL	22	ISSUAL	22
39	ISSUAL	22	ISSUAL	22
40	ISSUAL	22	ISSUAL	22
41	ISSUAL	22	ISSUAL	22
42	ISSUAL	22	ISSUAL	22
43	ISSUAL	22	ISSUAL	22
44	ISSUAL	22	ISSUAL	22
45	ISSUAL	22	ISSUAL	22
46	ISSUAL	22	ISSUAL	22
47	ISSUAL	22	ISSUAL	22
48	ISSUAL	22	ISSUAL	22
49	ISSUAL	22	ISSUAL	22
50	ISSUAL	22	ISSUAL	22
51	ISSUAL	22	ISSUAL	22
52	ISSUAL	22	ISSUAL	22
53	ISSUAL	22	ISSUAL	22
54	ISSUAL	22	ISSUAL	22
55	ISSUAL	22	ISSUAL	22
56	ISSUAL	22	ISSUAL	22
57	ISSUAL	22	ISSUAL	22
58	ISSUAL	22	ISSUAL	22
59	ISSUAL	22	ISSUAL	22
60	ISSUAL	22	ISSUAL	22
61	ISSUAL	22	ISSUAL	22
62	ISSUAL	22	ISSUAL	22
63	ISSUAL	22	ISSUAL	22
64	ISSUAL	22	ISSUAL	22
65	ISSUAL	22	ISSUAL	22
66	ISSUAL	22	ISSUAL	22
67	ISSUAL	22	ISSUAL	22
68	ISSUAL	22	ISSUAL	22
69	ISSUAL	22	ISSUAL	22
70	ISSUAL	22	ISSUAL	22
71	ISSUAL	22	ISSUAL	22
72	ISSUAL	22	ISSUAL	22
73	ISSUAL	22	ISSUAL	22
74	ISSUAL	22	ISSUAL	22
75	ISSUAL	22	ISSUAL	22
76	ISSUAL	22	ISSUAL	22
77	ISSUAL	22	ISSUAL	22
78	ISSUAL	22	ISSUAL	22
79	ISSUAL	22	ISSUAL	22
80	ISSUAL	22	ISSUAL	22
81	ISSUAL	22	ISSUAL	22
82	ISSUAL	22	ISSUAL	22
83	ISSUAL	22	ISSUAL	22
84	ISSUAL	22	ISSUAL	22
85	ISSUAL	22	ISSUAL	22
86	ISSUAL	22	ISSUAL	22
87	ISSUAL	22	ISSUAL	22
88	ISSUAL	22	ISSUAL	22
89	ISSUAL	22	ISSUAL	22
90	ISSUAL	22	ISSUAL	22
91	ISSUAL	22	ISSUAL	22
92	ISSUAL	22	ISSUAL	22
93	ISSUAL	22	ISSUAL	22
94	ISSUAL	22	ISSUAL	22
95	ISSUAL	22	ISSUAL	22
96	ISSUAL	22	ISSUAL	22
97	ISSUAL	22	ISSUAL	22
98	ISSUAL	22	ISSUAL	22
99	ISSUAL	22	ISSUAL	22
100	ISSUAL	22	ISSUAL	22



26, 27 Stück, vor Inbetriebnahme entfernen!
 remove this 27 screws after erection

23, 4 Teile
 4 parts

24, 3 Teile
 3 parts

8, 6 Halbwellen
 zu je 6 Segmenten
 6 half waves to each 6 segments

25, Hebeöse 110x110x10
 lifting lug

26, M24x50-DIN933
 hex screw

24, 800x14, x Gl 2500
 Schraubenteilung 8x300mm
 am gestreckten Blech
 screw pitch: 8x300mm
 on straight plate

23, 4 Teile
 4 parts

26, 27 Stück, vor Inbetriebnahme entfernen!
 remove this 27 screws after erection

27, Scheibe A25 DIN 125, ($\phi 44/25 \times 4$)

TOLERANZEN SCHWEISSKANTENARBEIT:
 1) BEI NENNABMESSUNGEN: ± 0,15 mm
 2) VERKANTETE KANTEN ± 0,10 mm
 3) STÜCKWEISE ± 0,15 mm
 4) SPALTENBREITEN 0,14 mm

TOLERANZEN WELD PREPARATION:
 1) INCLUDED ANGLES: 90°/110° WELD 10°
 2) FILLET WELD ± 0,10 mm
 3) WELD 11,5 mm
 4) WIDTH OF WELDING GAP 0,14 mm

ALLE WELD SEAMS MAT. 1.4464
 MEASSEN VOLL DURCHSCHWEISST
 BEW. (RACHEN ÜBERALL)

TOLERANZEN WELD PREPARATION:
 1) INCLUDED ANGLES: 90°/110° WELD 10°
 2) FILLET WELD ± 0,10 mm
 3) WELD 11,5 mm
 4) WIDTH OF WELDING GAP 0,14 mm

ALLE WELD SEAMS MAT. 1.4464
 MEASSEN VOLL DURCHSCHWEISST
 BEW. (RACHEN ÜBERALL)

NO.	ITEM	DESCRIPTION	QTY	UNIT	REMARKS	PERCENTAGE	STATUS	DATE	BY	CHECKED
06	II	Fox EV50		E		100% VT	F.H.	H		
05	II	Fox EV50	E 5159 B10	E		100% VT	F.H.	H		
04	II	EMK6	S82	MAG	247	100% VT	F.H.	H		
03	1,4541	Fox CN23/12-A	E23-12 LR23	E	1/53	100% RT	F.M.	H, T		
02	1,4541	Fox SAS2	E 19 976	E	1/163	100% RT	F.M.	H, T		
01	1,4541	Fox SAS2	E 19 976	E	1/163	100% RT	F.M.	H, T		

DATE: 12.10.1992
 DRAWING NO.: T-AN10311-12
 CLIENT: IRISH FERTILIZER IND. LTD
 PROJECT: STAC 66 778/A

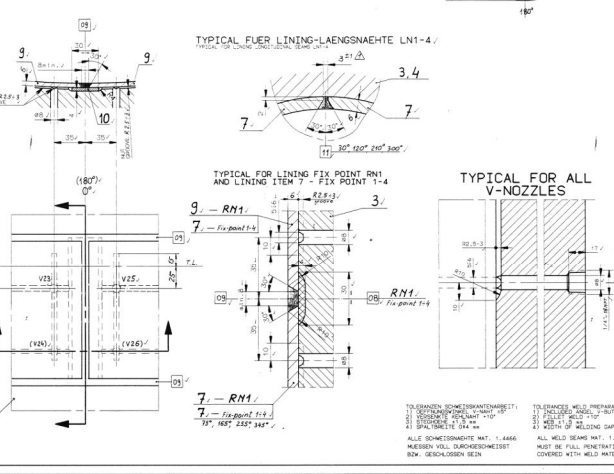
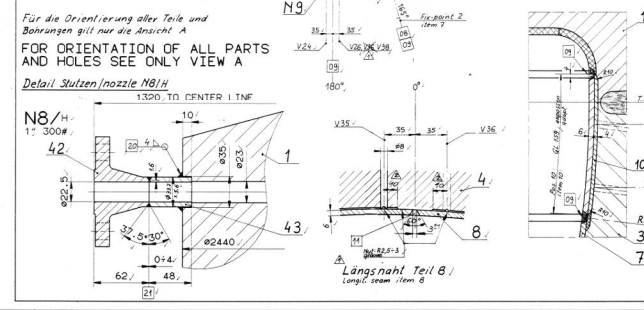
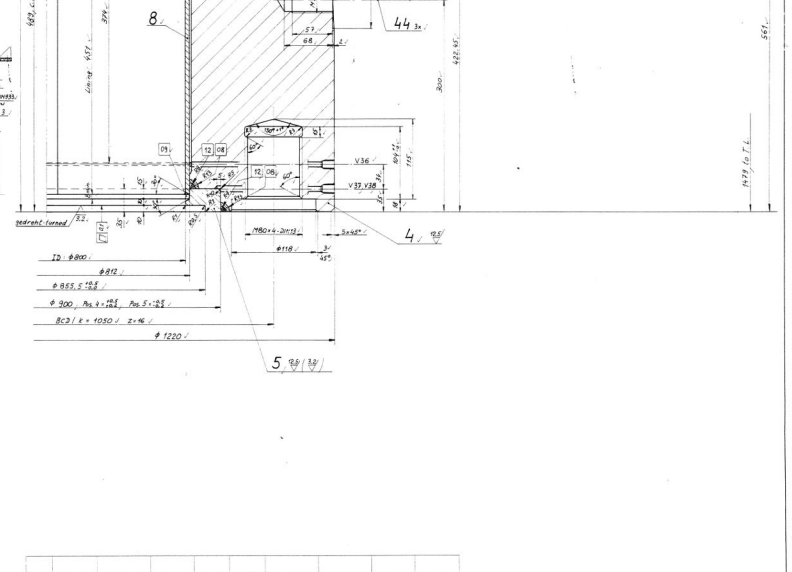
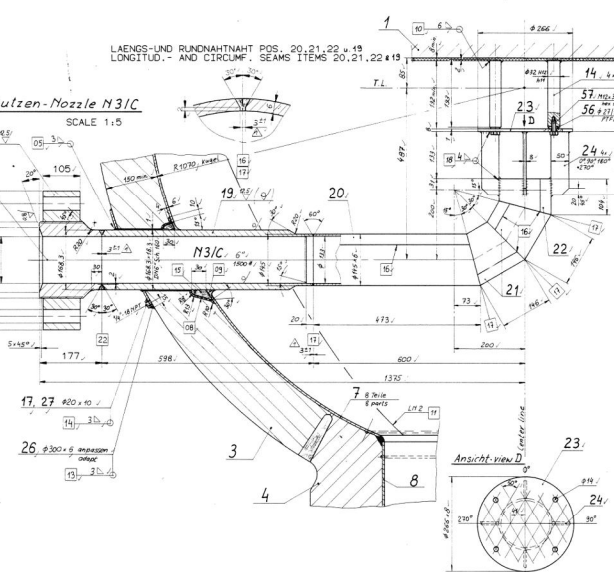
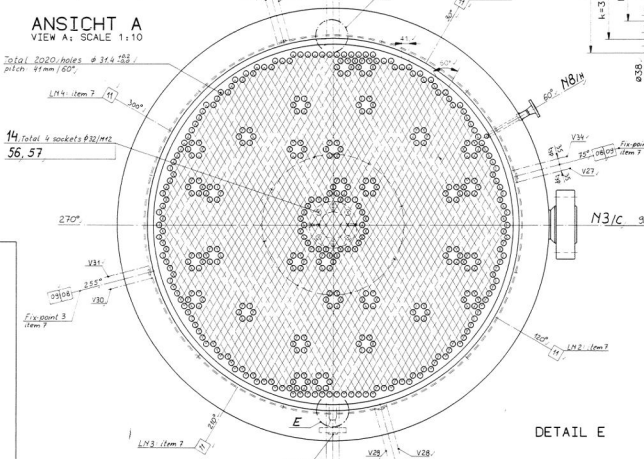
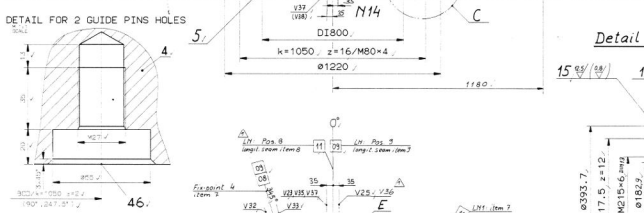
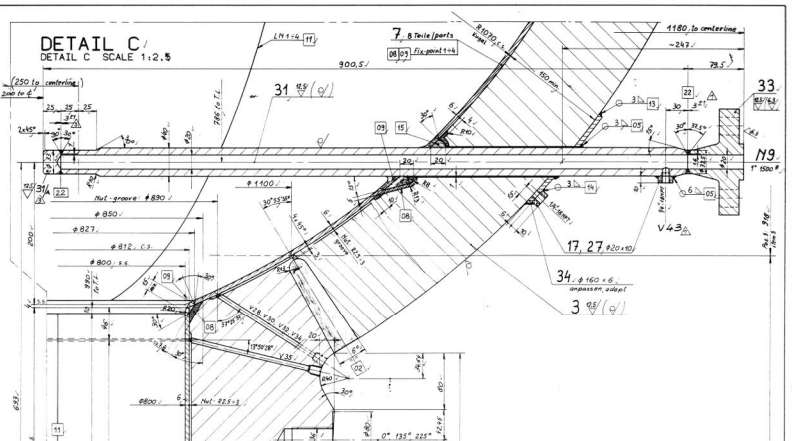
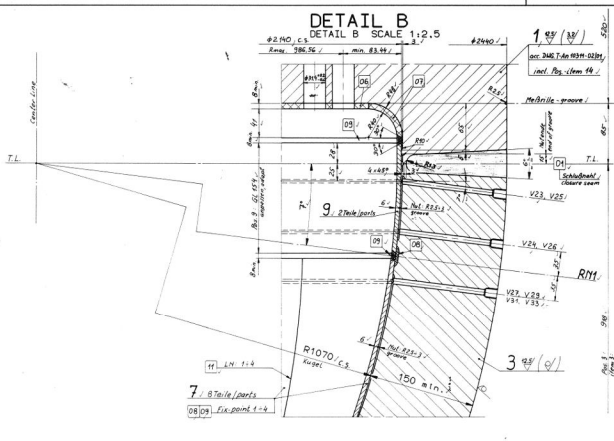
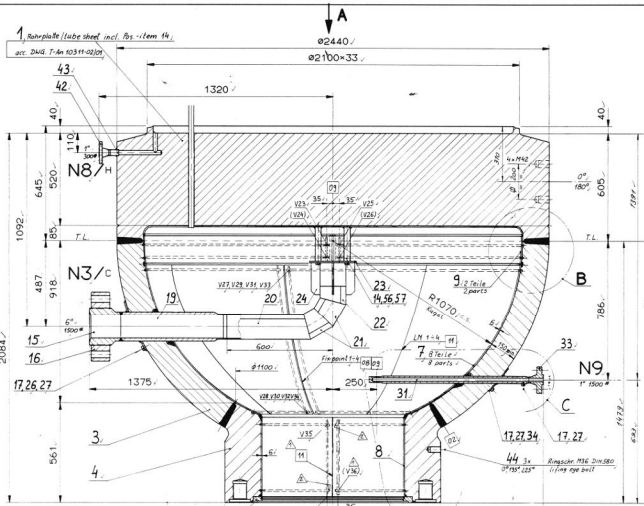
JOB DOC. INDEX: 215408
 PART LIST: 215409
 RESERVE PART LIST: 215414

KUNDEN AUFTRAGS-NR.:
 I F I
 KUNDEN ZEICHENUNG-NR.:
 6416

1993
 SCHÖLLER-BLECKMANN
 APPARATE-TECHNIK GMBH
 WIMMER 92 07 27

512853
 H.P. Stripper 1021-C
 Kompensator
 Expansion bellow

T-AN10311-12
 DWG-NO C-1021-C-109



No.	QTY	DESCRIPTION	UNIT	REMARKS	DATE	STATUS
22	1.4445	SP-100-100-100-100	mm	SP-100-100-100-100	1993	Final
21	2.3333	SP-100-100-100-100	mm	SP-100-100-100-100	1993	Final
20	2.3333	SP-100-100-100-100	mm	SP-100-100-100-100	1993	Final
18	1.4445	SP-100-100-100-100	mm	SP-100-100-100-100	1993	Final
16	1.4445	SP-100-100-100-100	mm	SP-100-100-100-100	1993	Final
15	1.4445	SP-100-100-100-100	mm	SP-100-100-100-100	1993	Final
14	1.4445	SP-100-100-100-100	mm	SP-100-100-100-100	1993	Final
13	1.4445	SP-100-100-100-100	mm	SP-100-100-100-100	1993	Final
12	1.4445	SP-100-100-100-100	mm	SP-100-100-100-100	1993	Final
11	1.4445	SP-100-100-100-100	mm	SP-100-100-100-100	1993	Final
10	1.4445	SP-100-100-100-100	mm	SP-100-100-100-100	1993	Final
09C	1.4445	SP-100-100-100-100	mm	SP-100-100-100-100	1993	Final
09B	1.4445	SP-100-100-100-100	mm	SP-100-100-100-100	1993	Final
09A	1.4445	SP-100-100-100-100	mm	SP-100-100-100-100	1993	Final
08	1.4445	SP-100-100-100-100	mm	SP-100-100-100-100	1993	Final
07B	1.4445	SP-100-100-100-100	mm	SP-100-100-100-100	1993	Final
07A	1.4445	SP-100-100-100-100	mm	SP-100-100-100-100	1993	Final
06C	1.4445	SP-100-100-100-100	mm	SP-100-100-100-100	1993	Final
06B	1.4445	SP-100-100-100-100	mm	SP-100-100-100-100	1993	Final
06A	1.4445	SP-100-100-100-100	mm	SP-100-100-100-100	1993	Final
05	1.4445	SP-100-100-100-100	mm	SP-100-100-100-100	1993	Final
02	1.4445	SP-100-100-100-100	mm	SP-100-100-100-100	1993	Final
01	1.4445	SP-100-100-100-100	mm	SP-100-100-100-100	1993	Final

SCHLEIFER-ROCKWELL

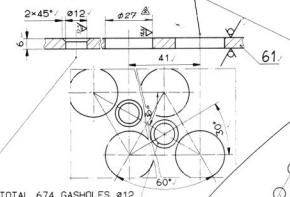
UNTERE VORKAMMER

T-AN10311-02

512853

1993

TOTAL 2020 BOHRUNGEN/HOLES ø27

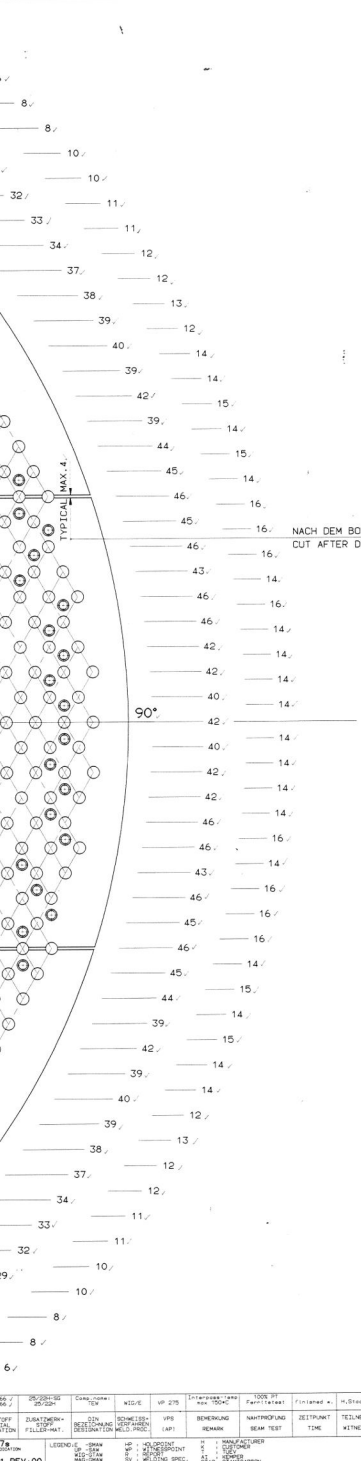
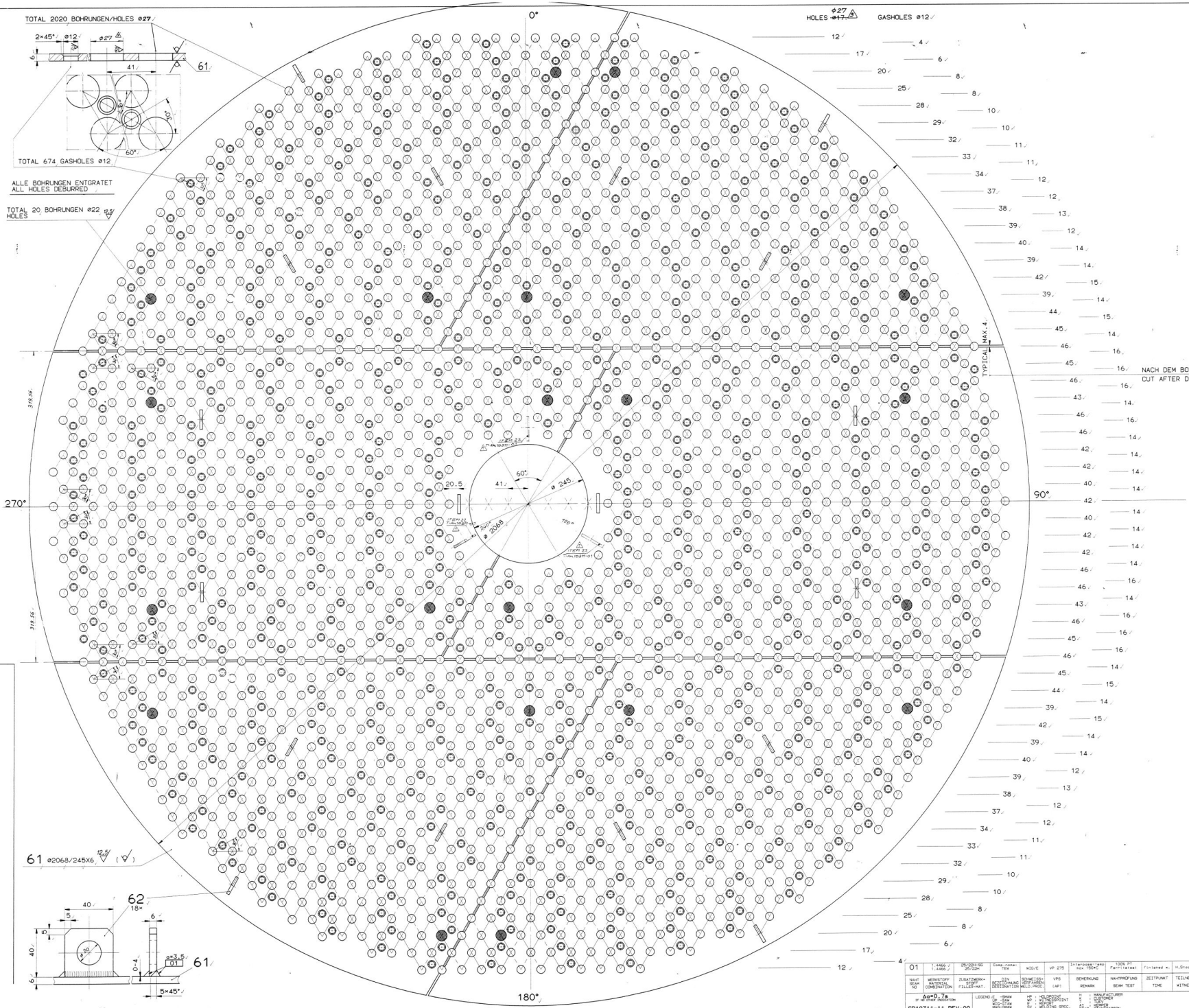


TOTAL 674 GASHOLES ø12

ALLE BOHRUNGEN ENTGRATET
ALL HOLES DEBURRED

TOTAL 20 BOHRUNGEN ø22
TOTAL HOLES

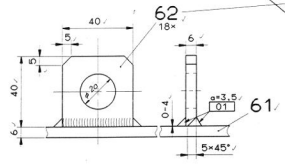
HOLES ø27
GASHOLES ø12



NACH DEM BOHREN SCHNEIDEN
CUT AFTER DRILLING

TEILNAMEN SCHWEISER/ANLEITER: ...
TEILNAMEN WELDSCHWESER/ANLEITER: ...
ALLE SCHWEISER/ANLEITER: ...
ALLE WELDSCHWESER/ANLEITER: ...

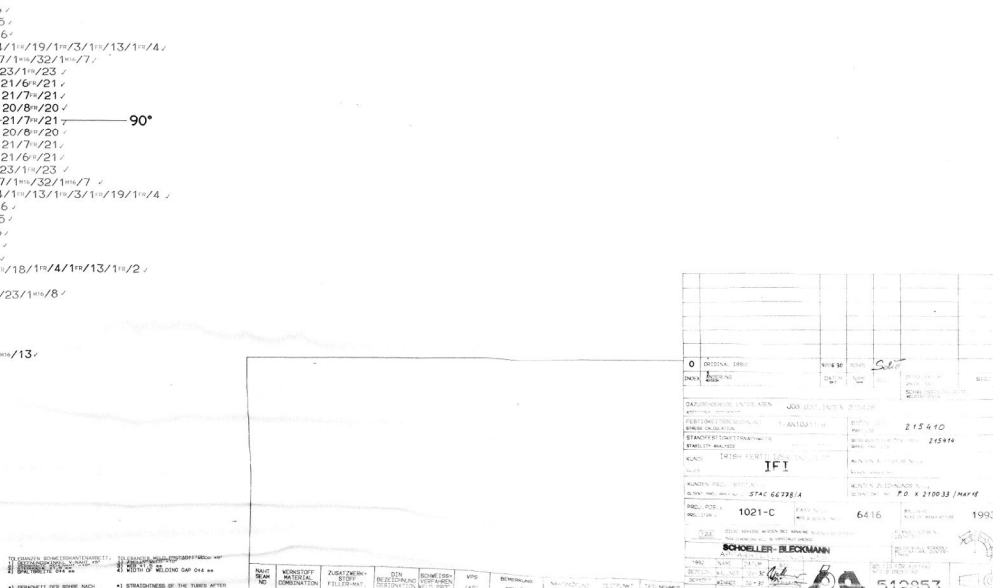
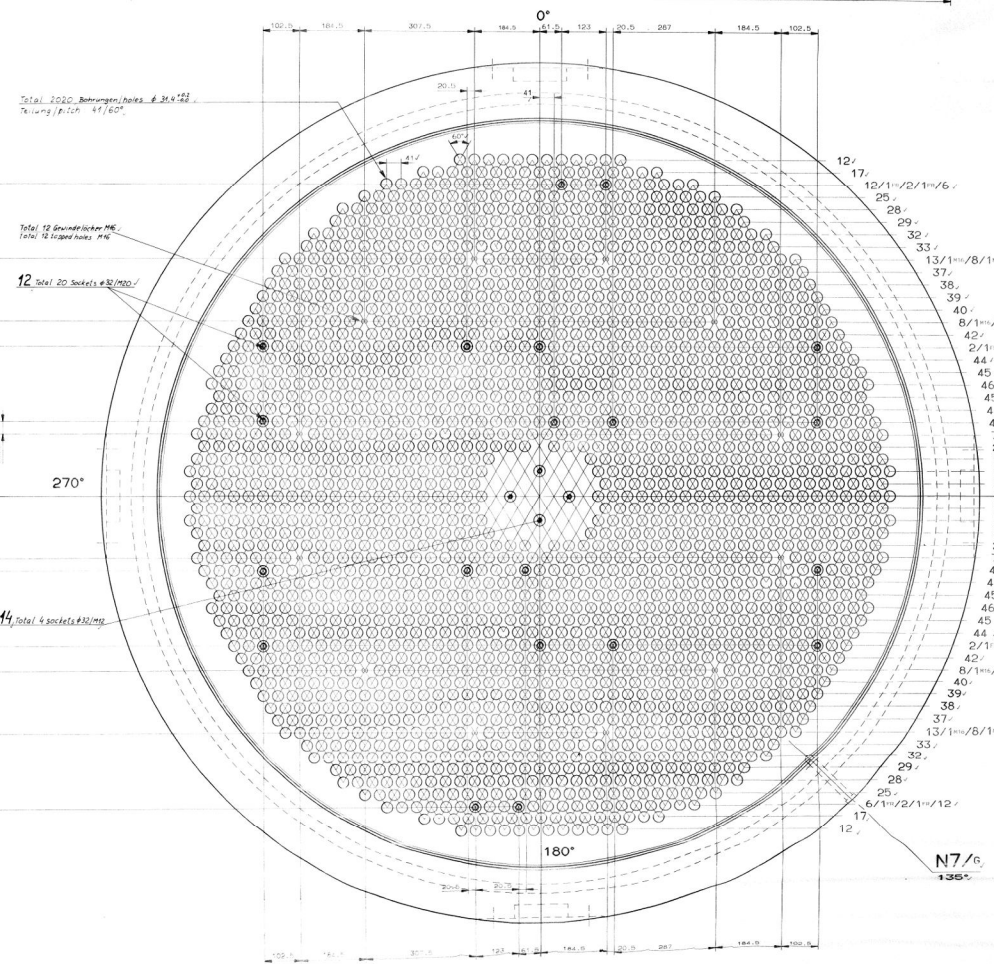
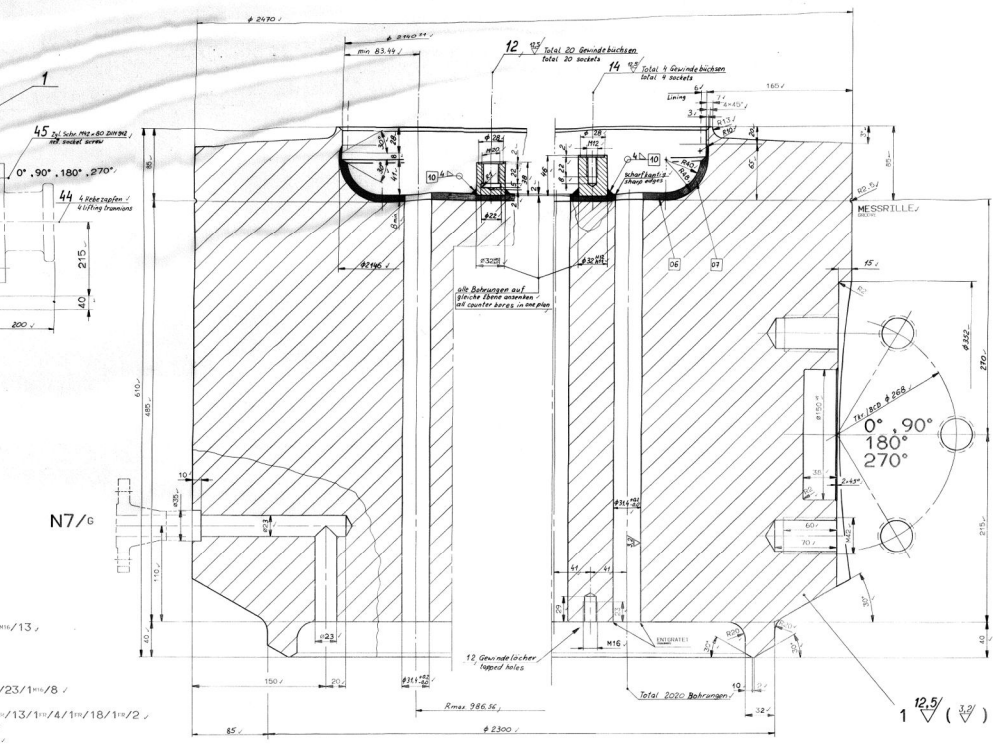
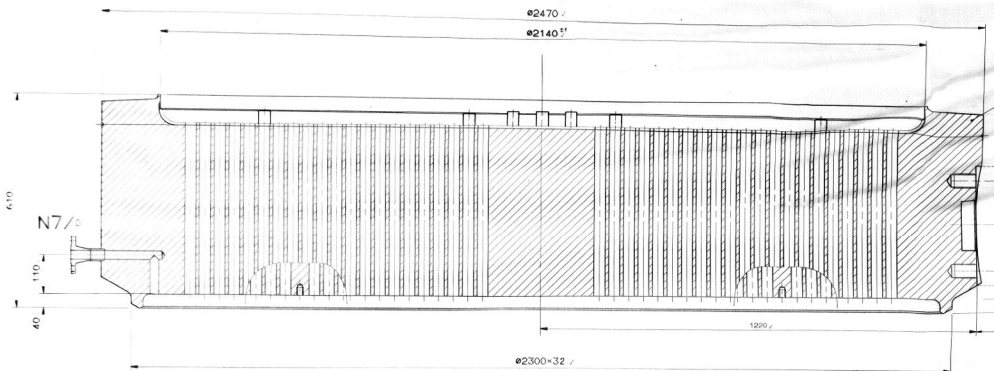
61 ø2068/245x6



NO	DATE	REVISION	BY	DATE	REVISION	BY	DATE	REVISION	BY	DATE
01	14.08.00	1

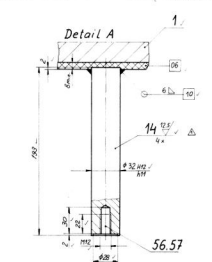
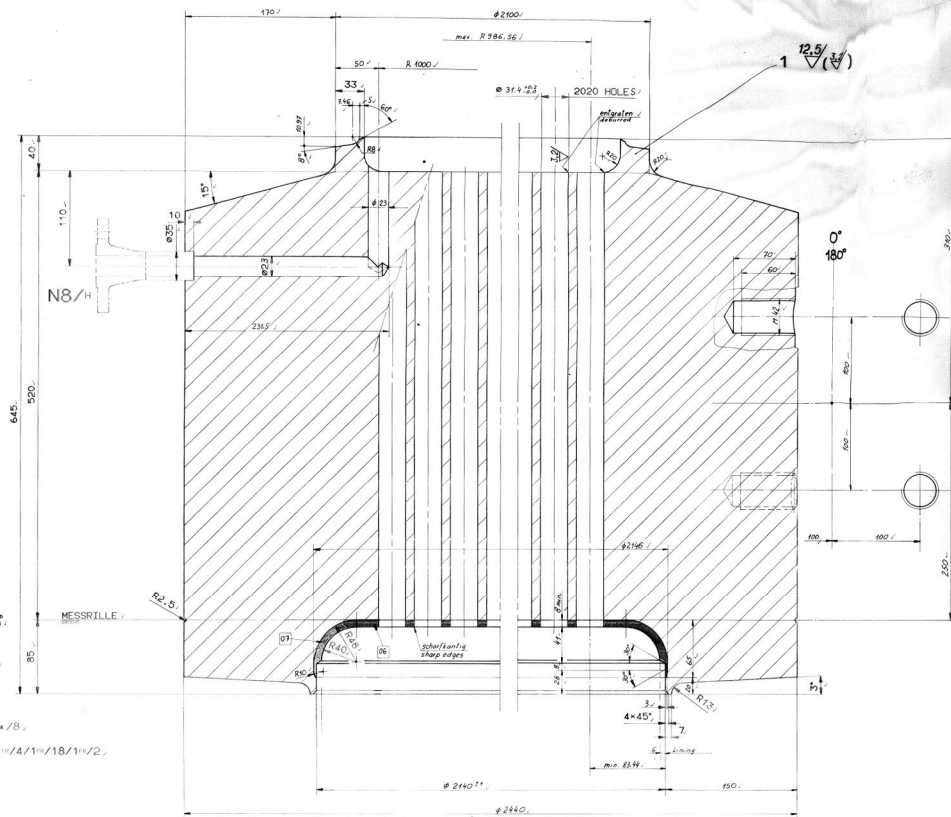
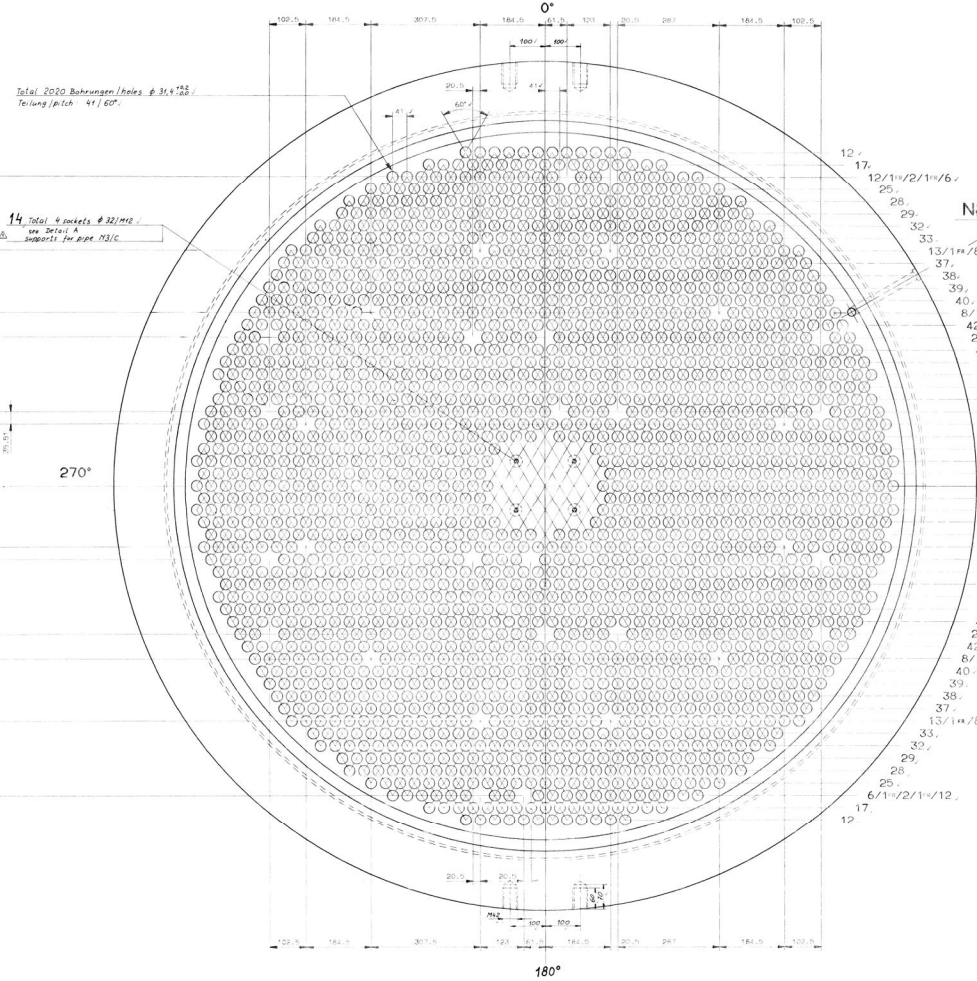
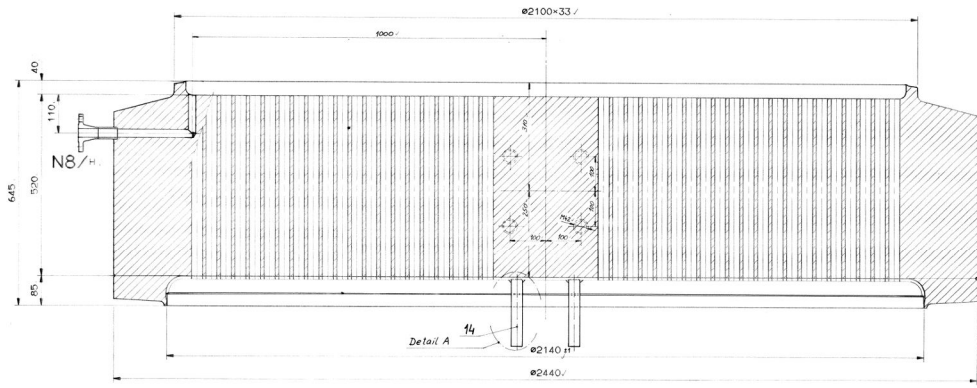
DATE/VERSION: 14.08.00	JOB CODE: INDEX 215408
DESIGN: ...	STOCKLISTE: 215409
CLIENT: IFI	STOCKLISTE: 215414
PROJ. NO.: 1021-C	DATE: 1993
SCHÖLLER-BLECKMANN INDUSTRIAL SYSTEMS	
T-AN10311-11	

03



NO.	REVISION	DATE	BY	CHKD.	REMARKS
1					
2					
3					
4					
5					
6					
7					
8					
9					
10					
11					
12					
13					
14					
15					
16					
17					
18					
19					
20					
21					
22					
23					
24					
25					
26					
27					
28					
29					
30					
31					
32					
33					
34					
35					
36					
37					
38					
39					
40					
41					
42					
43					
44					
45					
46					
47					
48					
49					
50					
51					
52					
53					
54					
55					
56					
57					
58					
59					
60					
61					
62					
63					
64					
65					
66					
67					
68					
69					
70					
71					
72					
73					
74					
75					
76					
77					
78					
79					
80					
81					
82					
83					
84					
85					
86					
87					
88					
89					
90					
91					
92					
93					
94					
95					
96					
97					
98					
99					
100					

0	ORIGINAL DRAWING	DATE	BY	CHKD.	REMARKS
1					
2					
3					
4					
5					
6					
7					
8					
9					
10					
11					
12					
13					
14					
15					
16					
17					
18					
19					
20					
21					
22					
23					
24					
25					
26					
27					
28					
29					
30					
31					
32					
33					
34					
35					
36					
37					
38					
39					
40					
41					
42					
43					
44					
45					
46					
47					
48					
49					
50					
51					
52					
53					
54					
55					
56					
57					
58					
59					
60					
61					
62					
63					
64					
65					
66					
67					
68					
69					
70					
71					
72					
73					
74					
75					
76					
77					
78					
79					
80					
81					
82					
83					
84					
85					
86					
87					
88					
89					
90					
91					
92					
93					
94					
95					
96					
97					
98					
99					
100					



1. ANWENDUNG: ...
 2. MATERIAL: ...
 3. HERSTELLER: ...
 4. DATUM: ...
 5. ZEICHEN: ...
 6. STANDORT: ...
 7. BESCHREIBUNG: ...
 8. VERFÜGBARKEIT: ...
 9. SONSTIGE ANMERKUNGEN: ...

NO.	BEZUGS-GRÖSSE	BEZUGS-GRÖSSE	BEZUGS-GRÖSSE	BEZUGS-GRÖSSE	BEZUGS-GRÖSSE	BEZUGS-GRÖSSE	BEZUGS-GRÖSSE	BEZUGS-GRÖSSE	BEZUGS-GRÖSSE
1

01	Item 19 supports for pipe 733C	32.01.31	1/10/19	215 411
02	ORIGINAL: 1021-C	30.09.99	3/10/99	215 411
03	REVISION: 1021-C	30.09.99	3/10/99	215 411
04	REVISION: 1021-C	30.09.99	3/10/99	215 411
05	REVISION: 1021-C	30.09.99	3/10/99	215 411
06	REVISION: 1021-C	30.09.99	3/10/99	215 411
07	REVISION: 1021-C	30.09.99	3/10/99	215 411
08	REVISION: 1021-C	30.09.99	3/10/99	215 411
09	REVISION: 1021-C	30.09.99	3/10/99	215 411
10	REVISION: 1021-C	30.09.99	3/10/99	215 411

SCHUELLER-BECKMANN
 512853
 UNTERE ROHRPLATTE
 T-AN10311-02/01