

DESIGN VERIFICATION NOTES

1. GENERAL
1.1 THE PROJECT HAS BEEN VERIFIED IN ACCORDANCE WITH THE REQUIREMENTS OF THE 2014 ALBERTA BUILDING CODE.

1.2 BUILDING IMPORTANCE CATEGORY (SNOW, WIND, AND EARTHQUAKE) IS NORMAL.
1.3 THIS VERIFICATION DOES NOT INCLUDE MEMBER CONNECTIONS AND FOUNDATIONS.

2. LOADS ON STRUCTURE

2.1 LIVE

LL = 75 PSF

2.2 SNOW

S_f = 45.8 PSF S_s = 1.0 (ULS)

S_r = 2.1 PSF S_s = 0.9 (SLS)

2.3 WIND

q(1/50) = 6.7 PSF I_w = 1.0 (ULS)

C_s = 0.7(10)/1/5 NOT LESS THAN 0.9 I_w = 0.75 (SLS)

C_p = 2.0

C_d = 1.3

2.4 EARTHQUAKE

S_o(0.2) = 0.1 PGA = 0.04 F_a = 1.3

S_o(0.5) = 0.06 SITE CLASS = D F_v = 1.4

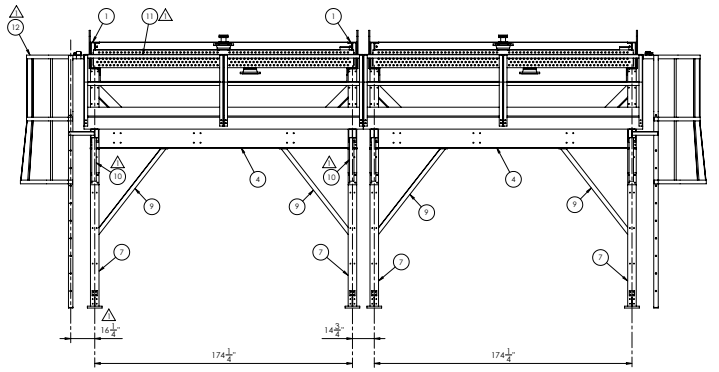
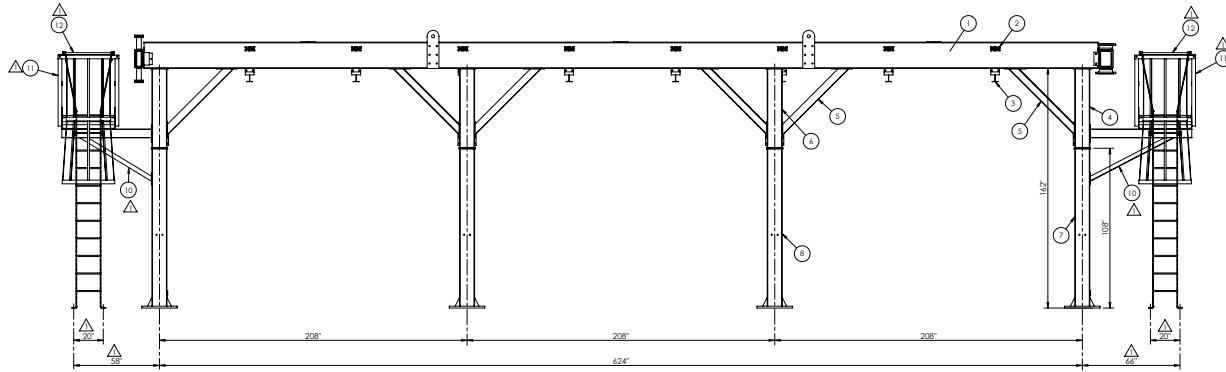
S_o(1.0) = 0.03 R_d = 1.5 I_e = 1.0

S_o(2.0) = 0.01 R_d = 1.3

SFRS CONSISTS OF CONVENTIONAL STEEL BRACED FRAMES.

METHOD OF ANALYSIS - STATIC

BILL OF MATERIALS					
ITEM	QTY	DESCRIPTION	MATERIAL	DWG. NO.	WT.
1	2	SIDE CHANNEL		14496-102-SHT5	4056
2	8	TOP TUBE SUPPORT		14496-102-SHT6	574
3	8	BOTTOM TUBE SUPPORT		14496-102-SHT7	1368
4	2	STUB COLUMN - END		14496-101-SHT12	1434
5	12	STUB COLUMN BRACE		14496-101-SHT9	768
6	2	STUB COLUMN - CENTER		14496-101-SHT13	1562
7	4	LOWER COLUMN - END		14496-101-SHT19	1184
8	4	LOWER COLUMN - INTERIOR		14496-101-SHT20	1176
9	8	LOWER END KNEE BRACE		14496-101-SHT18	320
10	4	HEADER WALKWAY SUPPORTS		14496-101-WL-SHT2	356
11	2	HEADER WALKWAYS		14496-101-WL-SHT1	2330
12	2	CAGED STEF-RNU LADDER		14496-101-WL-SHT7	494
TOTAL WEIGHT					15856



UNLESS OTHERWISE SPECIFIED: TOLERANCES: FRACTIONAL ± 1/16		3	11/04/15	AG	REVISED NOTES AS SHOWN.		
TOLERANCES: DECIMAL ± 0.01		2	10/27/15	AG	ADDED DESIGN CRITERIA NOTES AS SHOWN.	8/5	1/4"
TOLERANCES: DECIMAL ± 0.01		1	07/27/15	AG	ADDED STUBS TO 10/28/15 12 AND UPDATED VIEWS.	8/5	1/4"
TOLERANCES: DECIMAL ± 0.01		0	10/18/15	AG	ORIGINAL RELEASE	8/5	1/4"
REV	DATE	BY	DESCRIPTION	CHG	APPROVED	SIZE: D	SCALE: N.T.S.

#15W-54L-313 INDUCED DRAFT
STRUCTURAL CERTIFICATION
PART NO. 14496-001SR-SHT1
SIZE: D SCALE: N.T.S. REV: 3

<p>FOUNDATION LOADS CALCULATED PER HC 2000</p> <p>WIND: V₃₅ = 100 MPH TERRAIN EXPOSURE = C OCCUPANCY CATEGORY I</p> <p>SEISMIC:</p> <p>OCCUPANCY CATEGORY III</p> <p>SITE CLASS D</p> <p>S_s = 0.412g S₁ = 0.19g</p> <p>SNOW: P_s = 30 PSF OCCUPANCY CATEGORY II</p> <p>C_e = 1.0 C_t = 1.0</p>	<p>STRUCTURE LOADS CALCULATED PER HC 2000</p> <p>WIND: V₃₅ = 100 MPH TERRAIN EXPOSURE = C OCCUPANCY CATEGORY III</p> <p>SEISMIC:</p> <p>OCCUPANCY CATEGORY III</p> <p>IMPORTANCE FACTOR I = 1.5</p> <p>SITE SOIL CLASS D</p> <p>S_s = 0.41g S₁ = 0.13</p> <p>SNOW: P_s = 30 PSF OCCUPANCY CATEGORY II</p> <p>C_e = 1.0 C_t = 1.0</p>
--	---

```

STRUCTURE LOADS CALCULATED PER IBC 2006
WIND: VSS = 100 MPH
TERRAIN EXPOSURE = C
OCCUPANCY CATEGORY II

SEISMIC: OCCUPANCY CATEGORY II
IMPORTANCE FACTOR I = 1.5
SITE SOIL CLASS D
Ss = 0.41g
Si = 0.13

SNOW: Pg = 30 PSF
OCCUPANCY CATEGORY II
Ce = 1.0
Cs = 1.0

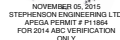
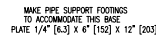
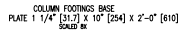
```

FOUNDATIONS TO BE DESIGNED FOR THE MOST STRINGENT REACTIONS (IBC/2014 ABC) AT EACH COLUMN

- $l_s = 1.0$ (ULS)
 $l_s = 0.9$ (SLS)
 $l_w = 1.0$ (ULS)
 $l_w = 0.75$ (SLS)
 $F_\alpha = 1.3$
 $F_\gamma = 1.4$
 $l_e = 1.0$

DOE VERIFICATION

COLUMN ANCHORS
 64 - 1" [25] DIA. REQ'D
 PUMP SKID ANCHORS
 6 - 3/4" [19] DIA. REQ'D
 PIPE SUPPORT ANCHORS
 12 - 1/2" [13] DIA. REQ'D
 LADDER ANCHORS
 8 - 1/2" [13] DIA. REQ'D
 SCALED 4X



- #### RELATED DRAWINGS

14496-001 Sht 1 GENERAL ARRANGEMENT
14496-001 Sht 3 PRODUCT INFORMATION SHEET
14496-10PD P & ID DRAWING

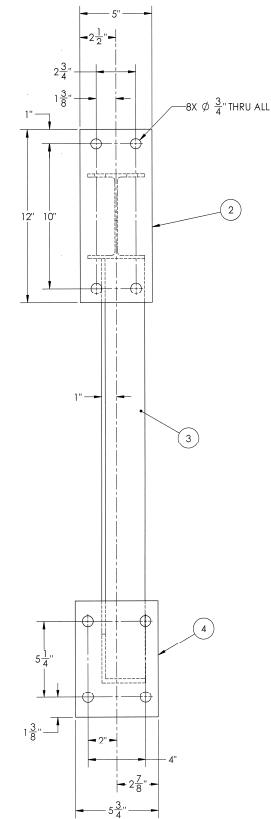
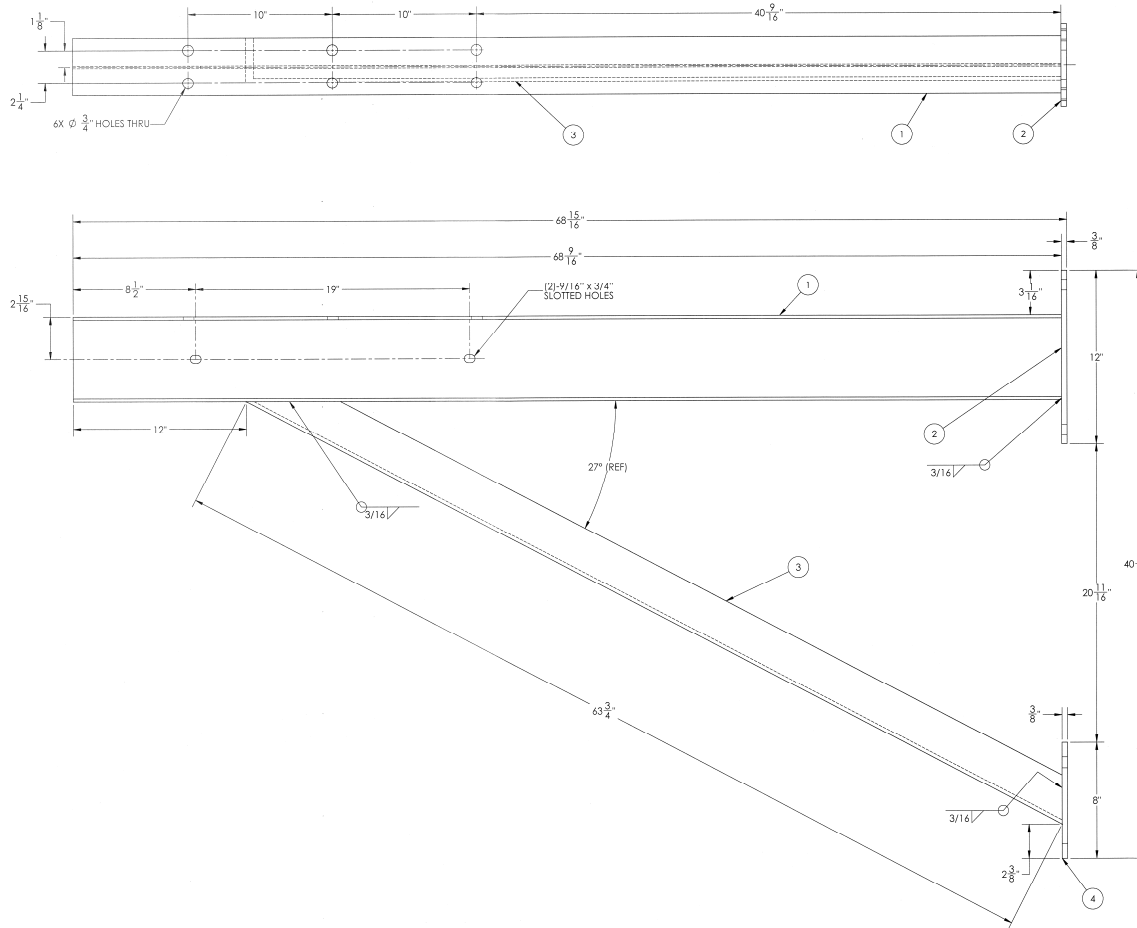


ANCHOR BOLT PLAN

UNLESS OTHERWISE SPECIFIED:
TOLERANCES:
FRACTIONAL ± 1/76

ECODYNE		Houston, (713) 67-	
HEAT EXCHANGERS			
2 - #158-54L-313 INDUCED DRAFT ANCHOR BOLT PLAN			
PART NO:		1-4496-001	
SIZE: E	SCALE:	N.T.S.	REV

REV.	ITEM	QTY.	DESCRIPTION	WEIGHT	MATERIAL	SPEC 1	SPEC 2	PART NO.
1	1		BEAM - W6 X 9 X 68 9/16"	52	STEEL	A-992		
2	1		PLATE - 3/8" X 5" X 12"	6	STEEL	A-36		
3	1		ANGLE - 3" X 3" X 1/4" X 63 3/4"	26	STEEL	A-36		
4	1		PLATE 3/8" X 5 3/4" X 8"	5	STEEL	A-36		
			TOTAL WEIGHT	89				



NOTES:
1. BEAD WELD THE DRAWING NUMBER ON THE PART. METAL TAGS MAY ALSO BE USED.
2. ALL FRACTIONAL DIMENSIONS SHALL HAVE A TOLERANCE OF $\pm .016"$ EXCEPT AS NOTED.
3. REMOVE ALL SLAG, LOOSE RUST AND MILL SCALE, WELD SPATTER, OIL, DIRT, AND ANY OTHER FOREIGN MATTER.

SEE 14496-WELD/INSPECTION/DOC FOR WELDING, INSPECTION AND DOCUMENTATION REQUIREMENTS

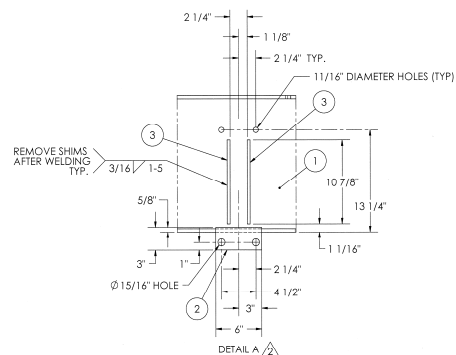
UNLESS OTHERWISE SPECIFIED:								 Houston, Texas (713) 675-3511	
TOLERANCES:									
FRACTIONS = 1/16"									
<p>THE NEW NATIONAL INFORMATION SYSTEM IS THE PROPERTY OF ECODYNE HEAT EXCHANGERS AND IS LOANED TO YOU ON A CONFIDENTIAL BASIS. IT IS NOT TO BE REPRODUCED OR REPRODUCED IN ANY MANNER WITHOUT THE WRITTEN PERMISSION OF ECODYNE HEAT EXCHANGERS. IT IS THE PROPERTY OF ECODYNE HEAT EXCHANGERS. IT IS NOT TO BE REPRODUCED OR REPRODUCED IN ANY MANNER WITHOUT THE WRITTEN PERMISSION OF ECODYNE HEAT EXCHANGERS.</p>									
REV	DESCRIPTION	ORIGINAL	REASON	DATE	APPROVED	PART NO: 14C96-1015L-SH1-2 SIZE: D SCALE: N.T.S. REV: 0			
0	ECODYNE HEAT EXCHANGERS			01/05/2010	APPROVED	WALKWAY SUPPORT BEAM 4/5			



NOVEMBER 05, 2015
STEPHENSON ENGINEERING LTD.
APEGA PERMIT # P11864
FOR 2014 ABC VERIFICATION ONLY

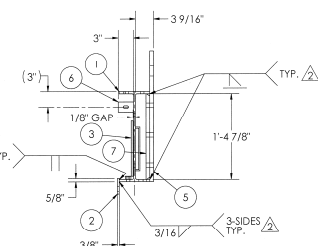
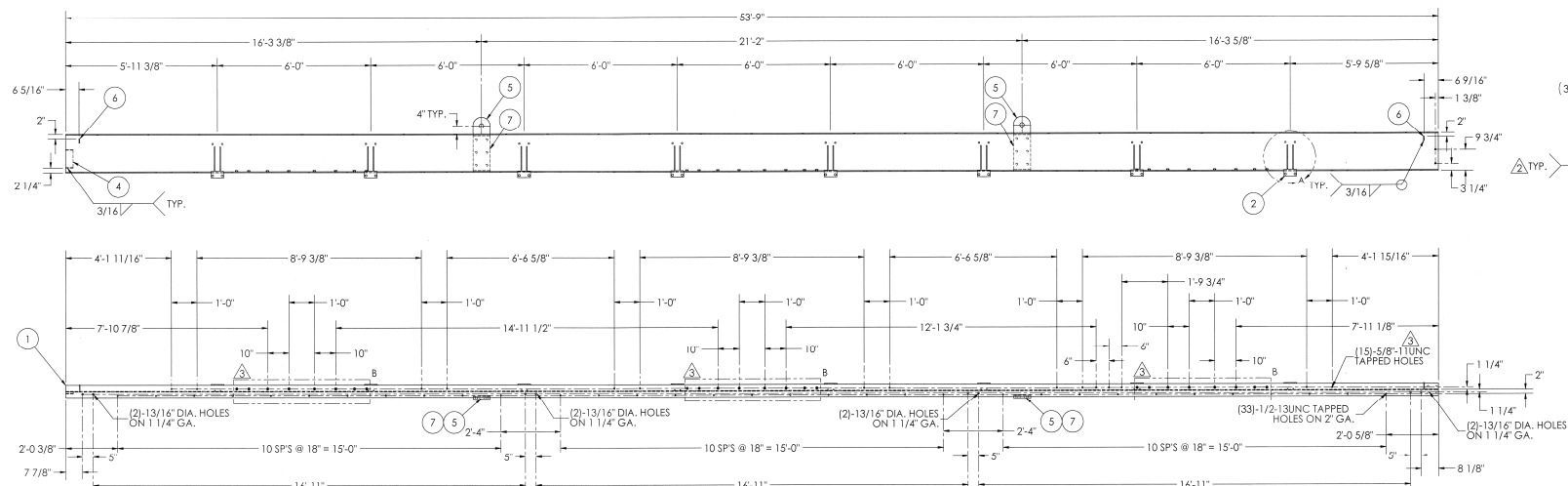
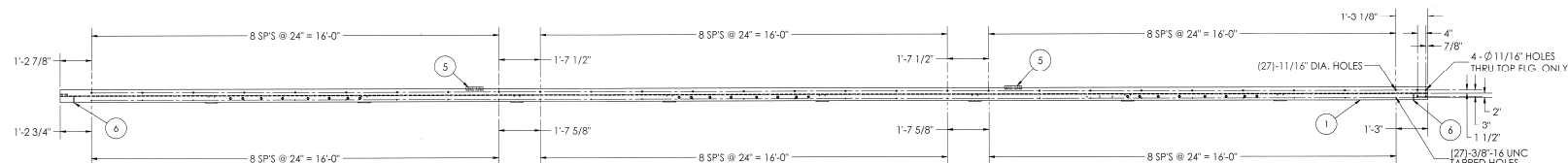
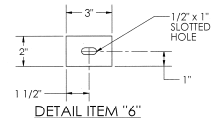
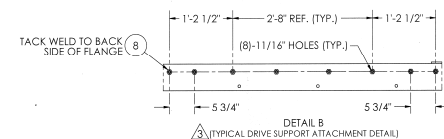
ECODYNE
HEAT EXCHANGERS

WALKWAY SUPPORT BEAM
PART NO: 14496-101WI-Sht 2



NOTES:

- NOTES:**
1. BEAD WELD THE DRAWING NUMBER ON THE PART. METAL TAGS MAY ALSO BE USED.
 2. FOR EVERY TWO REQUIRED, ONE AS SHOWN, ONE OPPOSITE HAND.
 3. MAG. PARTICLE TESTING OF ALL LIFT LUG WELDS ARE REQUIRED BY AN ASNT-TC-1A CERTIFIED PERSON. TEST REPORT REQUIRED.
 4. LIFT LUG WELDS TO BE PCAW OR SMAW.
 5. LIFTING LUGS AND BACKUP BARS TO BE FABRICATED FROM MATERIAL **CHARPY**
- IMPACT TESTED TO MEET 5 JOULES AT -40° F DOCUMENTATION IS TO BE PROVIDED.**



NOVEMBER 05, 2015
STEPHENSON ENGINEERING LTD.
APEGA PERMIT # P11864
FOR 2014 ABC VERIFICATION ONLY

ECODYNE Houston, Texas

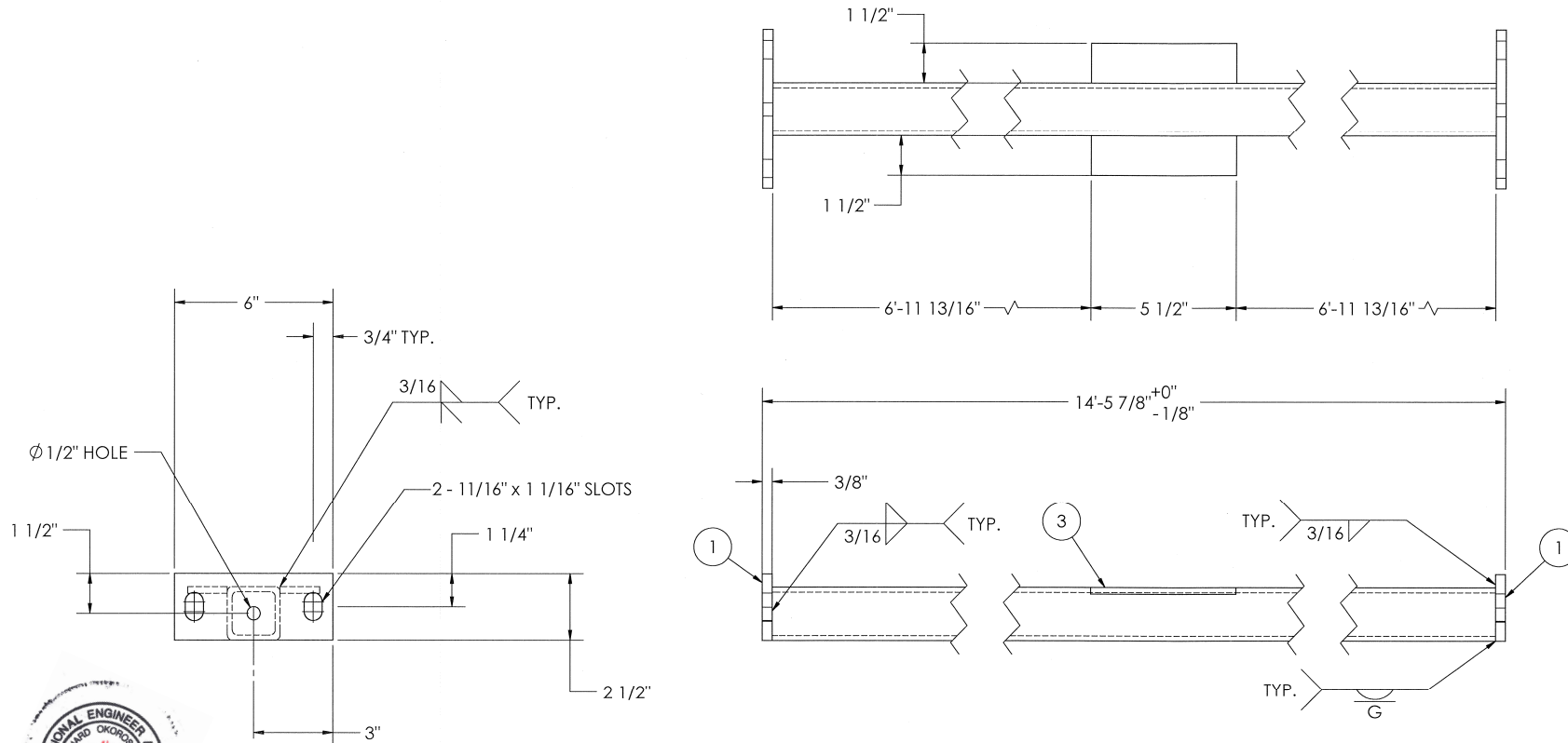
P/N: 14496-102-5R - AS SHOWN
P/N: 14496-102-5L - OPPOSITE HAND

[illegible]

REV.	ITEM	QTY.	DESCRIPTION	WEIGHT	MATERIAL	SPEC 1	SPEC 2	PART NO.
	1	2	END PLATE 3/8" X 2 1/2" X 6"	4	STEEL	A-36		
	2	1	SQUARE TUBE 2" X 2" X 3/16" X 14'-5 1/8"	67	STEEL	A500 GR B		
	3	2	BAR 1/4" X 1 1/2" X 5 1/2"	1	STEEL	A-36		
			TOTAL WEIGHT	72				

NOTE:

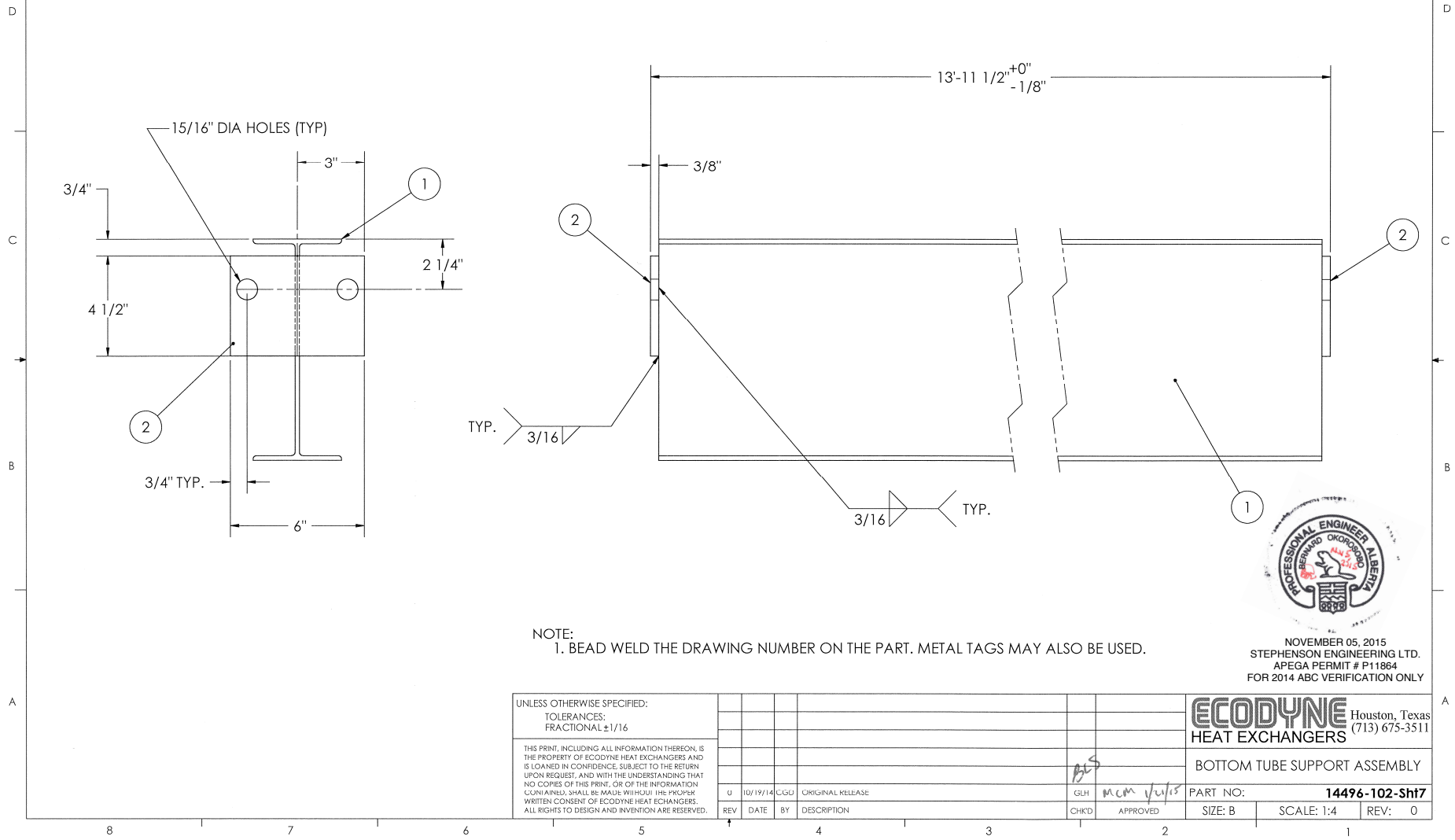
1. BEAD WELD THE DRAWING NUMBER ON THE PART. METAL TAGS MAY ALSO BE USED.

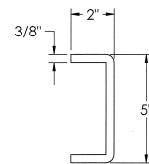
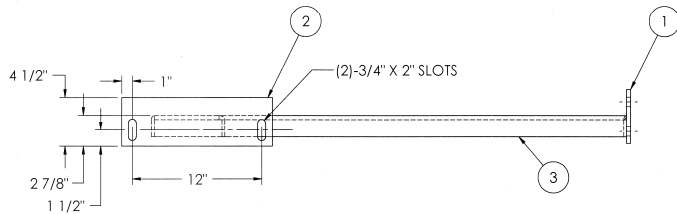


NOVEMBER 05, 2015
STEPHENSON ENGINEERING LTD.
APEGA PERMIT # P11864
FOR 2014 ABC VERIFICATION ONLY

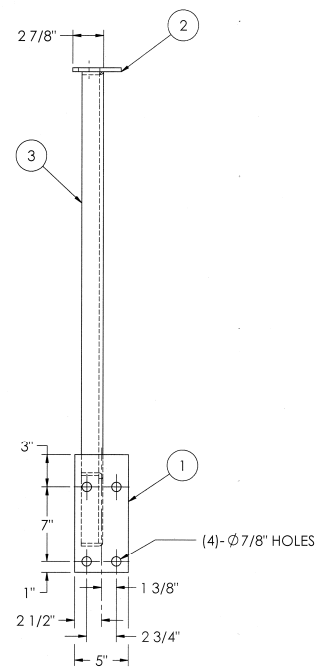
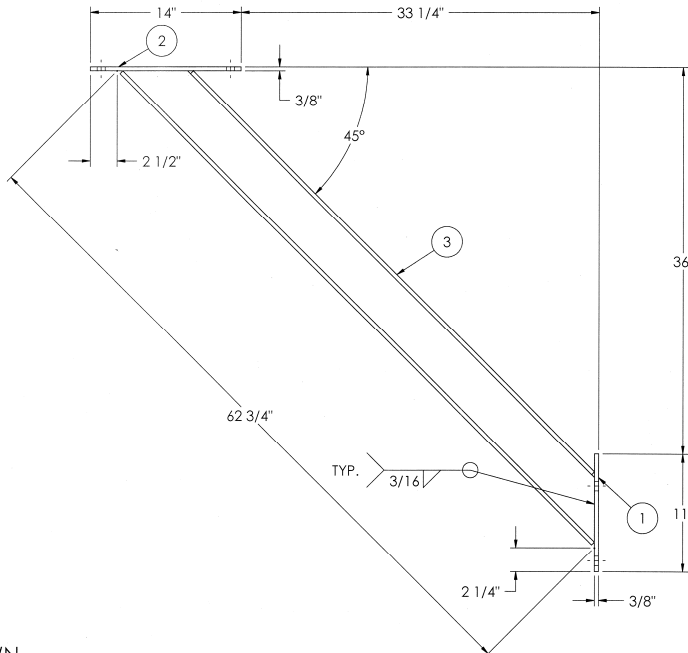
UNLESS OTHERWISE SPECIFIED: TOLERANCES: FRACTIONAL ±1/16								<div>ECODYNE</div> <div>HEAT EXCHANGERS</div> <div>Houston, Texas (713) 675-3511</div>			
THIS PRINT, INCLUDING ALL INFORMATION THEREON, IS THE PROPERTY OF ECODYNE HEAT EXCHANGERS AND IS LOANED IN CONFIDENCE. SUBJECT TO THE RETURN UPON REQUEST, AND WITH THE UNDERSTANDING THAT NO COPIES OF THIS PRINT, OR OF THE INFORMATION CONTAINED, SHALL BE MADE WITHOUT THE PROPER WRITTEN CONSENT OF ECODYNE HEAT EXCHANGERS. ALL RIGHTS TO DESIGN AND INVENTION ARE RESERVED.								TOP TUBE SUPPORT ASSEMBLY			
0	10/19/14	CGD	ORIGINAL RELEASE	GLH				PART NO: 14496-102-Sht6			
REV	DATE	BY	DESCRIPTION	CHKD				SIZE: B			
				APPROVED				SCALE: 1:4			
								REV: 0			

REV.	ITEM	QTY.	DESCRIPTION	WEIGHT	MATERIAL	SPEC 1	SPEC 2	PART NO.
	1	1	BEAM W10 x 12.0 X 13'-10 3/4"	167	STEEL	A-572-50		
	2	2	END PLATE 3/8" X 4 1/2" X 6"	4	PVQ STEEL	A-516 GR70		
			TOTAL WEIGHT	171				





ITEM #3 PROFILE



REV.	ITEM	QTY.	DESCRIPTION	WEIGHT	MATERIAL	SPEC 1	SPEC 2	PART NO.
	1	1	BAR 3/8" X 5" X 11"	6	STEEL	A-516-70		
	2	1	BAR 3/8" X 4 1/2" X 14"	6	STEEL	A-516-70		
1	3	1	CHANNEL (FORMED) 3/8" THK. X 7 1/2" X 62 3/4" LG. (M.B.E.)	49	STEEL	A-516-70		
			TOTAL WEIGHT	61				

14496-101-9R - AS SHOWN
14496-101-9L - OPP. HAND

NOTES:

1. PAINT DRAWING NUMBER ON PART. IF SANDBLASTED OR GALVANIZED, BEAD WELD. METAL TAGS MAY BE USED IF SANDBLASTED.
2. ALL FRACTIONAL DIMENSIONS SHALL HAVE A TOLERANCE OF $\pm 1/16"$ EXCEPT NOTED.
3. REMOVE ALL SLAG, LOOSE MILL SCALE, WELD SPATTER, OIL, DIRT, AND OTHER FOREIGN MATTER.
4. COMPONENTS TO BE FABRICATED FROM MATERIAL **CHARPY IMPACT TESTED** TO MEET 5 JOULES AT -40°F DOCUMENTATION IS TO BE PROVIDED.
5. STAMP HEAT NUMBER ON PART.

SEE 14496WELD/INSPECTION/DOC FOR WELDING, INSPECTION AND DOCUMENTATION REQUIREMENTS

UNLESS OTHERWISE SPECIFIED: TOLERANCES: FRACTIONAL $\pm 1/16$							
THE PRINT, INCLUDING ALL INFORMATION THEREON, IS THE PROPERTY OF ECODYNE HEAT EXCHANGERS AND IS LOANED IN CONFIDENCE. SUBJECT TO THE RETURN UPON REQUEST, AND WITH THE UNDERSTANDING THAT NO COPIES OF THIS PRINT, OR OF THE INFORMATION CONTAINED, SHALL BE MADE WITHOUT THE PRIOR WRITTEN CONSENT OF ECODYNE HEAT EXCHANGERS. ALL RIGHTS TO DESIGN AND INVENTION ARE RESERVED.							
1	03/24/15	AC	REVISED ITEM 3 WAS BEAM.	1	01/07/15	ECR	ORIGINAL RELEASE
REV	DATE	BY	DESCRIPTION	CHKD	APPROVED	SIZE: C	SCALE: 1:8



NOVEMBER 05, 2015
STEPHENSON ENGINEERING LTD.
APEGA PERMIT # P11864
FOR 2014 ABC VERIFICATION ONLY

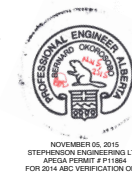
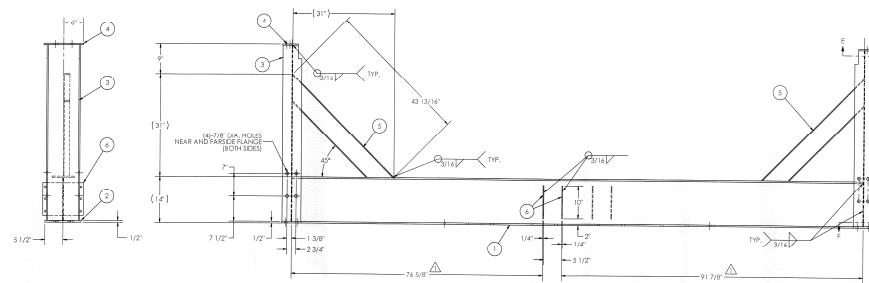
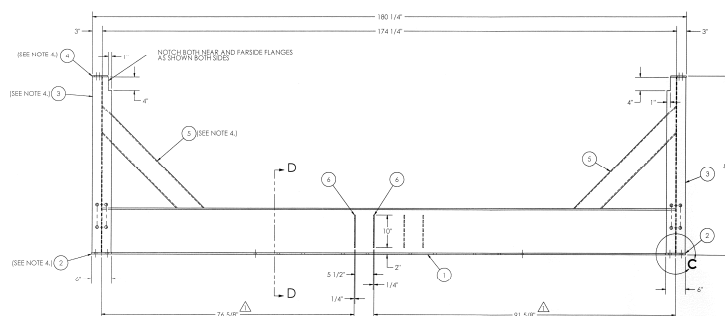
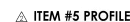
ECODYNE Houston, Texas
HEAT EXCHANGERS (713) 675-3511
STUB COLUMN
SIDE KNEE BRACE

PART NO: **14496-101-Shf9**

6-358, 3/31/2015, 10:17 AM

1. PAINT DRAWING NUMBER ON PART. IF SANDBLASTED OR GALVANIZED, BEAD WELD. METAL TAGS MAY BE USED IF SANDBLASTED.
2. ALL FRACTIONAL DIMENSIONS SHALL HAVE A TOLERANCE OF $\pm .1/16"$ EXCEPT NOTED.
3. REMOVE ALL SLAG, LOOSE MILL SCALE, WELD SPATTER, OIL, DIRT AND OTHER FOREIGN MATTER.
4. ITEMS 2 THRU 5 TO BE FABRICATED FROM MATERIAL **CHARPY IMPACT TESTED** TO MEET 5 JOULES AT -40°F DOCUMENTATION IS TO BE PROVIDED.
5. STAMP HEAT NUMBER ON PART.

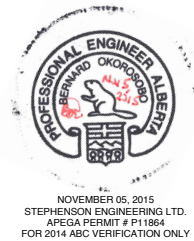
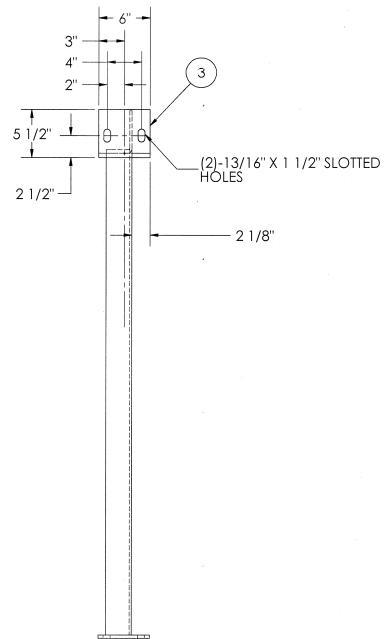
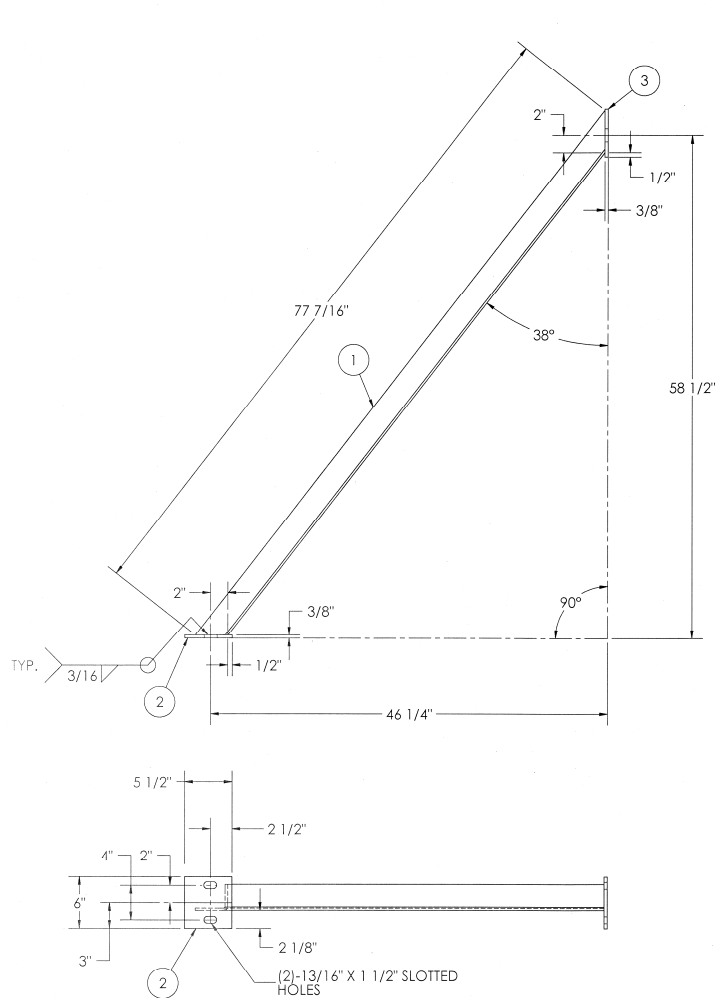
REV.	ITEM	QTY.	DESCRIPTION	WEIGHT	MATERIAL	SPEC 1	SPEC 2	PAR
1	1	1	BEAM W14 X 34 1/2"	488	STEEL	A992		
2	2	1	BAR 1/2" X 8" X 11"	19	STEEL	A-36		
3	3	2	BEAM W10 X 22 5/8"	195	STEEL	A992		
4	4	2	BAR 3/8" X 4 3/4" X 12"	12	STEEL	A-36		
5	5	2	FORMED PLATE 1/4 X 9 1/4 X 43 13/16"	50	STEEL	A-36		
6	4	4	BAR 1/4" X 4" X 10"	17	STEEL	A-36		
			TOTAL WEIGHT	791				



SEE 14494WELD/INSPECTION/DOC FOR WELDING, INSPECTION AND DOCUMENTATION REQUIREMENT

[illegible]

REV.	ITEM	QTY.	DESCRIPTION	WEIGHT	MATERIAL	SPEC 1	SPEC 2	PART NO.
	1	1	FORMED ANGLE 3" X 3" X 1/4" THK. X 77 7/16" LG. (M.B.E.)	29	STEEL	A-516-70		
	2	1	BAR 3/8" X 5 1/2" X 6"	4	STEEL	A-516-70		
	3	1	BAR 3/8" X 5 1/2" X 6"	4	STEEL	A-516-70		
			TOTAL WEIGHT	37				



SEE 14496-WELD/INSPECTION/DOC FOR WELDING, INSPECTION AND DOCUMENTATION REQUIREMENTS

NOTES:

1. BEAD WELD THE DRAWING NUMBER ON THE PART. METAL TAGS MAY ALSO BE USED.
2. ALL FRACTIONAL DIMENSIONS SHALL HAVE A TOLERANCE OF $\pm 1/16"$ EXCEPT AS NOTED.
3. REMOVE ALL SLAG, LOOSE RUST AND MILL SCALE, WELD SPATTER, OIL, DIRT, AND ANY OTHER FOREIGN MATTER.
4. COMPONENTS TO BE FABRICATED FROM MATERIAL CHARPY IMPACT TESTED TO MEET 5 JOULES AT -40°F DOCUMENTATION IS TO BE PROVIDED.
5. STAMP HEAT NUMBER ON PART.

UNLESS OTHERWISE SPECIFIED:
TOLERANCES:
FRACTIONAL $\pm 1/16$

THE PRINT, INCLUDING ALL INFORMATION THEREON, IS THE PROPERTY OF ECODYNE HEAT EXCHANGERS AND IS LOANED IN CONFIDENCE. SUBJECT TO THE RETURN UPON REQUEST, AND WITH THE UNDERSTANDING THAT NO COPIES OF THIS PRINT, OR OF THE INFORMATION CONTAINED, SHALL BE MADE WITHOUT THE PROPER WRITTEN CONSENT OF ECODYNE HEAT EXCHANGERS. ALL RIGHTS TO DESIGN AND INVENTION ARE RESERVED.

REV	DATE	BY	DESCRIPTION	CHKD	APPROVED
0	01/08/15	EGH	ORIGINAL RELEASE		

ECODYNE Houston, Texas (713) 675-3511	
HEAT EXCHANGERS	
LOWER END KNEE BRACE	
PART NO:	14496-101-Sh18
SIZE: C	SCALE: N.T.S.
REV: 0	

Technical drawing of a structural connection, showing a side elevation and a detail view.

Side Elevation Dimensions:

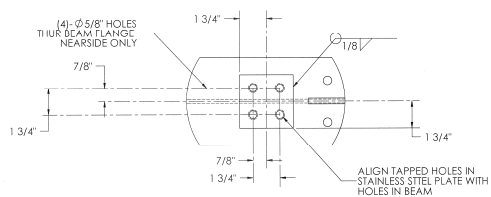
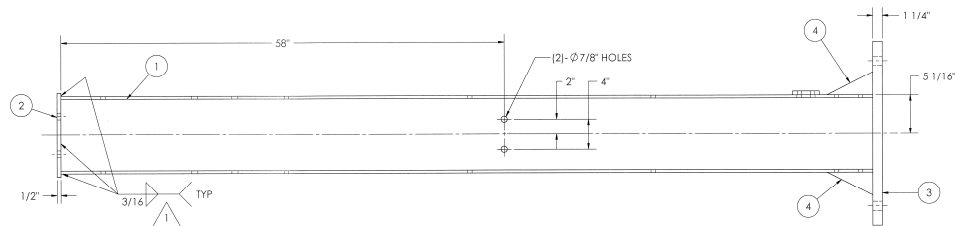
- Overall length: 108"
- Segment lengths: 24", 24", 24", 24"
- Vertical dimensions: 5 1/2", 3", 6", 11", 1 3/4", 3 1/2", 2 1/2", 5"
- Horizontal dimensions: 5 1/2", 2 3/4", 1 3/8", 3 1/8", 10"
- Flange thickness: 1 5/8"
- Section line: 17 1/2" (left), 5 1/4" (right)

Callouts:

- 1: Section line
- 2: Detail of hole pattern (4) - Ø 7/8" HOLES THRU ITEM "2"
- 3: Detail of hole pattern (4) - Ø 1 3/16" HOLES THRU
- 4: Detail of hole pattern (4) - 3/4" DIA. HOLES THRU BOTH FLANGES
- 5: Detail of hole pattern (12) - 5/8" DIA. HOLES THRU BOTH FLANGES

Detail View Dimensions:

- Overall width: 24"
- Segment lengths: 19", 12"
- Vertical dimensions: 10", 5", 2", 4"
- Horizontal dimensions: 9 1/2", 2"



3 1/2"

1 3/4"

1/2-12-13UNC TAPPED HOLES THRU STAINLESS STEEL BAR (ITEM 5")

7/8"

1 3/4"

3 1/2"

1 3/4"

7/8"

1 3/4"

DETAIL ITEM 5"

NOTES:

1. PAINT DRAWING NO. ON PART IF SANDBLASTED OR GALVANIZED, BEAD WELD, METAL TAGS MAY BE USED IF SANDBLASTED.
2. ALL FRACTIONAL DIMENSIONS SHALL HAVE A TOLERANCE OF $\pm 1/16"$ EXCEPT AS NOTED.
3. REMOVE ALL SLAG, LOOSE MILL SCALE, WELD SPATTER, OIL, DIRT AND OTHER FOREIGN MATTER.
4. COMPONENTS TO BE FABRICATED FROM MATERIAL **CHARPY IMPACT TESTED** TO MEET 5 JOULES AT -40°F DOCUMENTATION IS TO BE PROVIDED.
5. STAMP HEAT NUMBER ON PART.

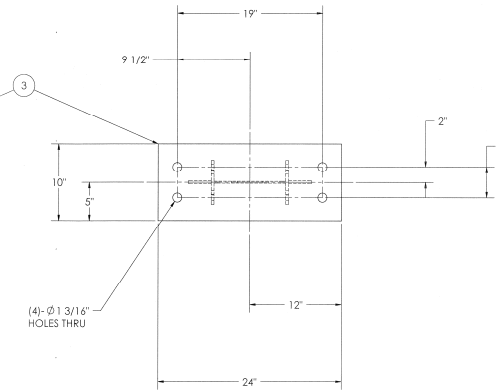
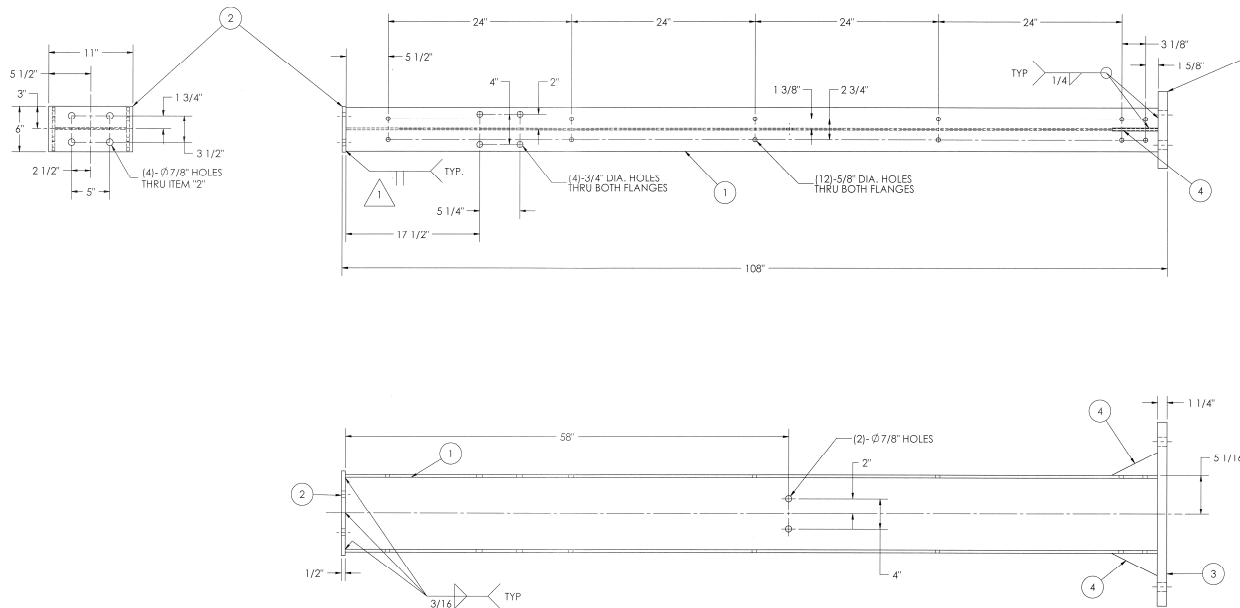


NOVEMBER 05, 2015
STEPHENSON ENGINEERING LTD.
APEGA PERMIT # P11864
FOR 2014 ABC VERIFICATION ONLY

SEE 14496-WELD/INSPECTION/DOC FOR WELDING, INSPECTION AND DOCUMENTATION REQUIREMENTS

S-358, 4/3/2015, 9:59 AM

REV.	ITEM	QTY.	DESCRIPTION	WEIGHT	MATERIAL	SPEC. 1	SPEC. 2	PART NO.
1	1		BEAM W10 x 22# x 106 1/4" LG.	200	STEEL	A992		
2	1		BAR 1/2" X 6" X 11"	9	STEEL	A-516-70		
3	1		PLATE 1 1/4" X 10" X 24"	83	STEEL	A-516-70		
4	2		BAR 3/8" X 3" X 6"	2	STEEL	A-516-70		
TOTAL WEIGHT				294				



NOVEMBER 05, 2015
STEPHEN D. JONES, P.E.
APEGA PERMIT # P111864
FOR 2014 ABC VERIFICATION ONLY

- NOTES:
1. PAINT DRAWING NO. ON PART. IF SANDBLASTED OR GALVANIZED, BEAD WELD, METAL TAGS MAY BE USED IF SANDBLASTED.
 2. ALL FRACTIONAL DIMENSIONS SHALL HAVE A TOLERANCE OF $\pm 1/16$ EXCEPT AS NOTED.
 3. REMOVE ALL SLAG, LOOSE MILL SCALE, WELD SPATTER, OIL, DIRT AND OTHER FOREIGN MATTER.
 4. COMPONENTS TO BE FABRICATED FROM MATERIAL **CHARPY IMPACT TESTED** TO MEET 5 JOULES AT -40°F. DOCUMENTATION IS TO BE PROVIDED.
 5. STAMP HEAT NUMBER ON PART.

SEE 14496-WELD/INSPECTION/DOC FOR WELDING, INSPECTION AND DOCUMENTATION REQUIREMENTS

UNLESS OTHERWISE SPECIFIED:				ECCODYNE HEAT EXCHANGERS			
TOLERANCES:				PART NO. 14496-101-Sh30			
FRACTIONAL 1/16				SCALE: N.T.S. REV: 1			
MATERIALS TO BE USED: ALL MATERIALS TO BE USED SHALL BE AS SPECIFIED IN THE DRAWING AND SHALL BE SUBJECT TO THE REQUIREMENTS OF THE APEGA PERMIT # P111864 FOR 2014 ABC VERIFICATION ONLY.				APPROVED: [Signature]			
REVISIONS:				DATE: 04/03/2015			
1	04/03/15	AT	ADDED & REVISED WELD SYMBOLS	DESCRIPTION: LOWER COLUMN - INTERIOR			
2	01/06/15	EGD	ORIGINAL RELEASE				
REV	DATE	BY	DESCRIPTION				