
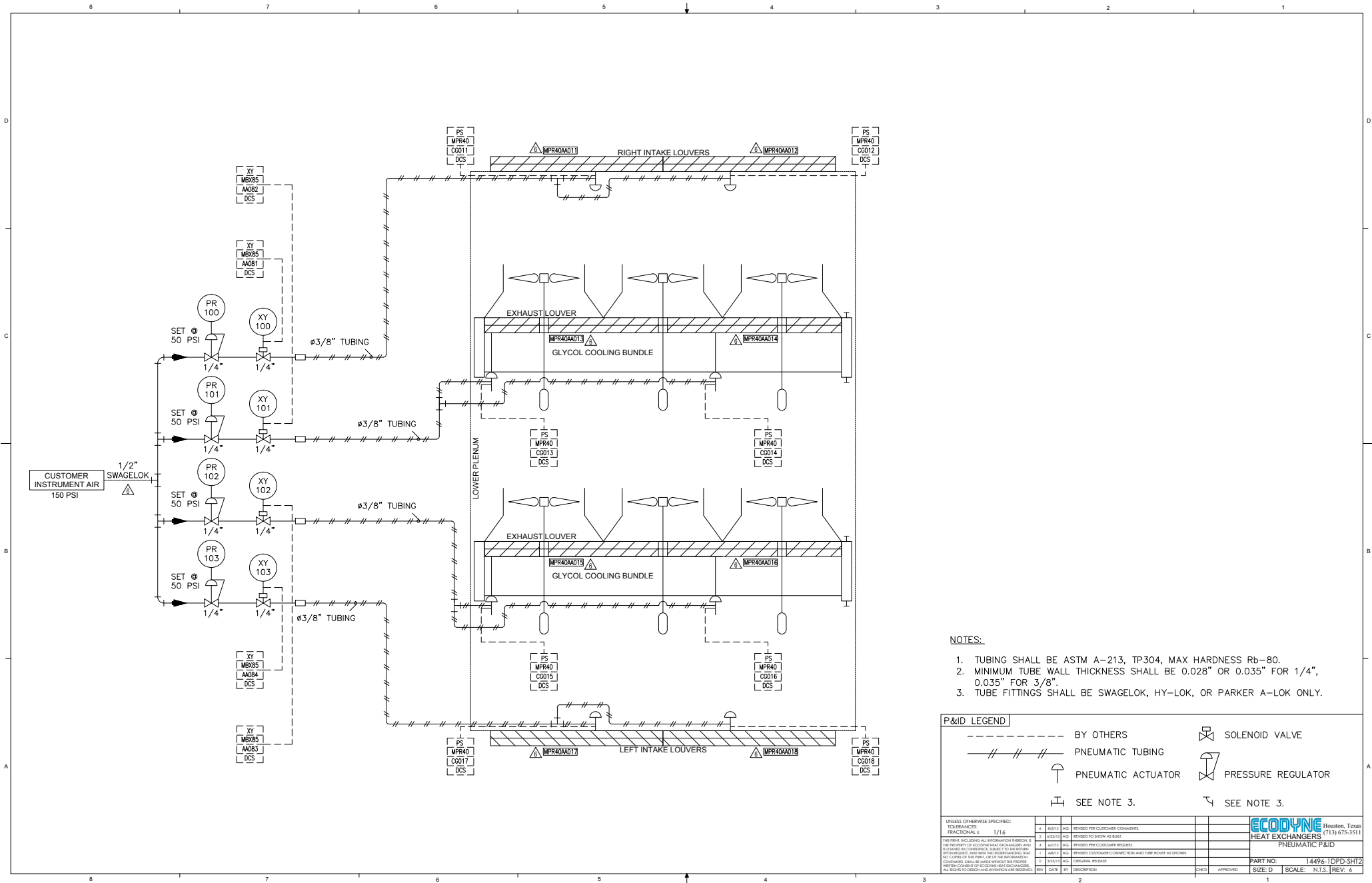


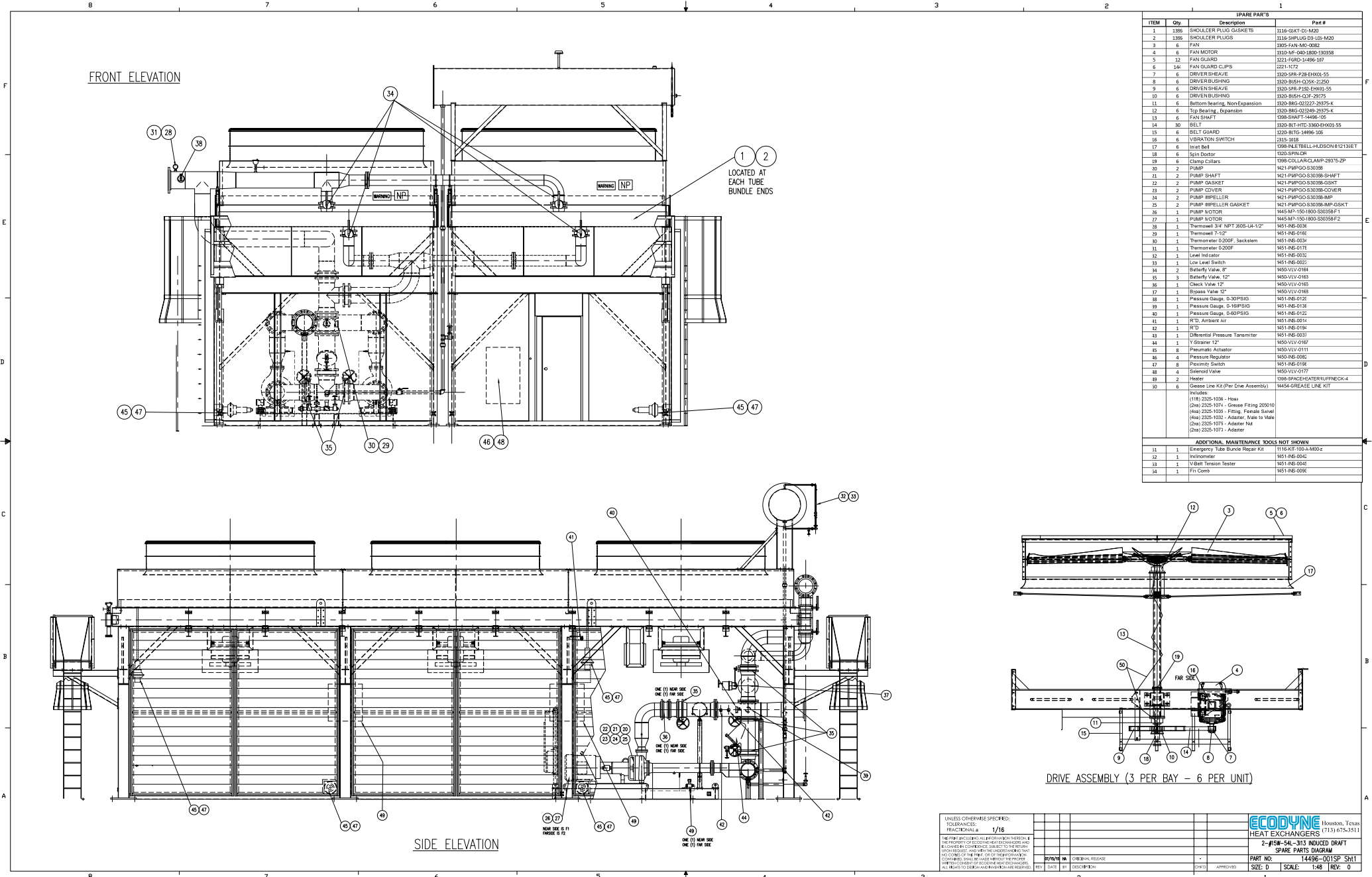
RELATED DRAWINGS

14496-001 SH1 1 GENERAL ARRANGEMENT

14496-001 SH1 2 ANCHOR BOLT PLAN

UNLESS OTHERWISE SPECIFIED: TOLERANCES: FRACTIONAL = 1/16				 Houston, Texas (713) 675-3511			
THIS PRINT INCLUDING ALL INFORMATION THEREON IS THE PROPERTY OF ECODYNE HEAT EXCHANGERS AND IS LOANED TO YOUR FIRM. IT IS TO BE USED ONLY FOR THE PROJECT AND NOT BE REPRODUCED OR COPIED IN ANY MANNER WITHOUT THE WRITTEN CONSENT OF ECODYNE HEAT EXCHANGERS. ALL RIGHTS TO DESIGN AND INVENTION ARE RESERVED.				P & ID DRAWING			
REV	DATE	BY	DESCRIPTION	PART NO: 14496-IDPD-SHT1			
1	02/10/16	AG	REVISED SHEET 2 PER CUSTOMER COMMENTS.	SIZE: D SCALE: N.T.S. REV: 8			
2				1			





SPARE PARTS			
ITEM	Qty.	Description	Part #
1	1885	SHOULDER PLUG GASKETS	1116-GSKT-DI-MOD
2	1885	SHOULDER PLUGS	1116-SHPLUG-DI-LOS-MOD
3	6	FAN	1805-1AN-MC-0082
4	6	FAN MOTOR	1805-M-180-1808-180358
5	12	FAN GUARD	1821-FORD-1488-187
6	14	FAN GUARD CLIPS	2221-K72
7	6	DRIVEN SHAFT	1820-SHA-728-EXH03-55
8	6	DRIVEN BUSHING	1820-BUSH-D304-21200
9	6	DRIVEN SHAFT	1820-SHA-718-EXH03-55
10	6	DRIVEN BUSHING	1820-BUSH-D304-21200
11	6	Bottom Bearing, Non-Expansion	1820-BRG-02127-29175-4
12	6	Top Bearing, Expansion	1820-BRG-02149-29175-4
13	6	FAN SHAFT	1820-SHA-718-EXH03-55
14	30	BELT	1820-BLT-1488-105
15	6	BELT GUARD	1820-BLG-1488-105
16	6	VIBRATION SWITCH	2315-1018
17	6	Insert Seal	1808-ALRELL-HLDSOIN-812131ET
18	6	Spin Doctor	1820-SPIN-DR
19	6	Clamp Collars	1808-COLLAR-CLAMP-25315-2P
20	2	PUMP	1821-PUMPO-S30388
21	2	PUMP SHAFT	1821-PUMPO-S30388-SHAFT
22	2	PUMP GASKET	1821-PUMPO-S30388-GSKT
23	2	PUMP COVER	1821-PUMPO-S30388-COVER
24	2	PUMP IMPELLER	1821-PUMPO-S30388-IMP
25	2	PUMP IMPELLER GASKET	1821-PUMPO-S30388-IMP-GSKT
26	1	PUMP MOTOR	1845-M-150-1800-S30388-F1
27	1	PUMP MOTOR	1845-M-150-1800-S30388-F2
28	1	Thermowell 3/4" NPT 200S-LH-1/2"	1851-INE-0038
29	1	Thermowell 1/2"	1851-INE-0180
30	1	Thermowell 0.000F Jackstem	1851-INE-0034
31	1	Thermowell 0.000F	1851-INE-0178
32	1	Level Indicator	1851-INE-0035
33	1	Low Level Switch	1851-INE-0022
34	2	Butterfly Valve, 8"	1850-VLV-0164
35	3	Butterfly Valve, 12"	1850-VLV-0168
36	1	Check Valve, 12"	1850-VLV-0165
37	1	Bypass Valve, 12"	1850-VLV-0169
38	1	Pressure Gauge, 0-30PSIG	1851-INE-0126
39	1	Pressure Gauge, 0-18PSIG	1851-INE-0136
40	1	Pressure Gauge, 0-60PSIG	1851-INE-0122
41	1	RTD, Ambient Air	1851-INE-0014
42	1	RTD	1851-INE-0184
43	1	Differential Pressure Transmitter	1851-INE-0031
44	1	Y Strainer 12"	1850-VLV-0167
45	8	Pressure Regulator	1850-INE-0111
46	4	Pressure Regulator	1850-INE-0085
47	8	Pressure Switch	1851-INE-0198
48	4	Seismic Valve	1850-VLV-0177
49	2	Heater	1808-SPACE-HEATER-KURFNECK-4
50	6	Grease Line Kit (Per Line Assembly)	1845-GREASE LINE KIT

ADDITIONAL MAINTENANCE TOOLS NOT SHOWN

31	1	Emergency Tube Bundle Repair Kit	1116-KIT-100-AM05-z
32	1	Infonometer	1851-INE-0042
33	1	V-Belt Tension Tester	1851-INE-0042
34	1	Fin Comb	1851-INE-0056